

II. FISCAL IMPACT ANALYSIS

A. Five Year Summary of Fiscal Impact:

Fiscal Years	2013	2014	2015	2016	2017
Capital Expenditures	\$ -0-	-0-	-0-	-0-	-0-
Operating Costs	-0-	-0-	-0-	-0-	-0-
External Revenues	-0-	-0-	-0-	-0-	-0-
Program Income (County)	-0-	-0-	-0-	-0-	-0-
In-Kind Match (County)	-0-	-0-	-0-	-0-	-0-
NET FISCAL IMPACT	*\$ -0-	-0-	-0-	-0-	-0-
# ADDITIONAL FTE POSITIONS (Cumulative)					

Is Item Included in Current Budget? Yes No

Budget Acct No.: Fund__ Dept.__ Unit__ Object
Program

B. Recommended Sources of Funds/Summary of Fiscal Impact:

*This item has no additional fiscal impact. The County has been maintaining this section of roadway and will continue to do so.

C. Departmental Fiscal Review: Atwillhite

III. REVIEW COMMENTS

A. OFMB Fiscal and/or Contract Dev. and Control Comments:

[Signature]
OFMB
7/12/13
7-11-13

[Signature] 7/15/13
Contract Dev. and Control
7-15-13
S. Wheeler

B. Approved as to Form and Legal Sufficiency:

[Signature] 7/19/13
Assistant County Attorney

C. Other Department Review:

Department Director

This summary is not to be used as a basis for payment.

Hairland Drive
Palm Beach County
Project No. 2013130

Page 80



F

See pg 70

E

TWP 44

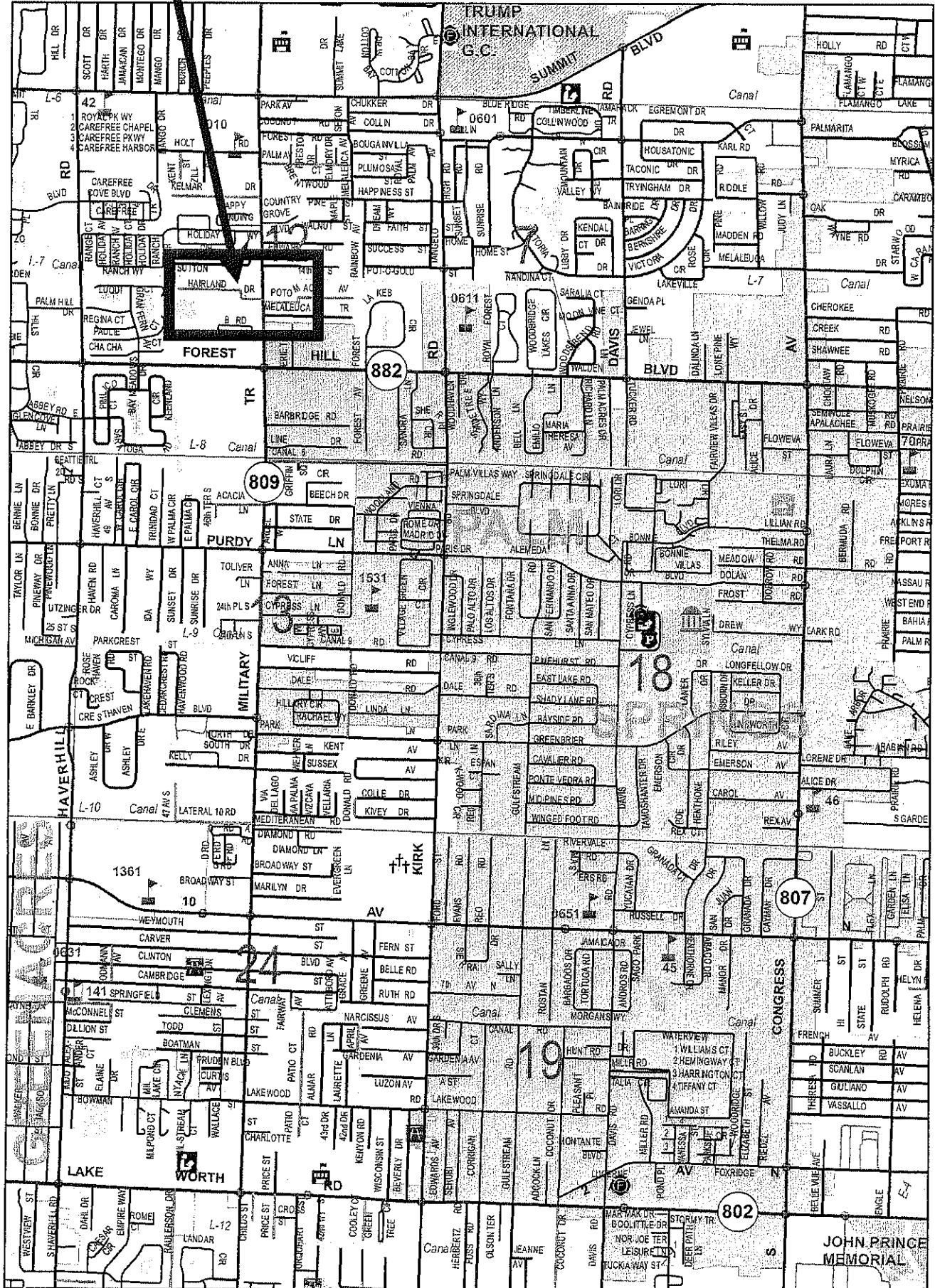
TWP 44

TWP 44

22

23

24



RNG 42

See pg 90

RNG 43

Page 80

RESOLUTION NO. R-2013

RESOLUTION OF THE BOARD OF COUNTY COMMISSIONERS OF PALM BEACH COUNTY, FLORIDA, TO APPROVE THE RECORDATION/FILING OF A MAINTENANCE MAP - SPECIFIC PURPOSE SURVEY, FOR HAIRLAND DRIVE, SECTION 12, TOWNSHIP 44 SOUTH, RANGE 42 EAST, WITH THE CLERK OF THE CIRCUIT COURT OF AND FOR PALM BEACH COUNTY, FLORIDA

WHEREAS, Hairland Drive, Maintenance Map – Specific Purpose Survey has been submitted to the Board of County Commissioners for approval for filing for records; and

WHEREAS, the Road and Bridge Division Director has certified that Palm Beach County has maintained this area of Hairland Drive for four (4) years, as required by Florida Statute 95.361.

WHEREAS, Florida Statute **95.361 Roads presumed to be dedicated**, states that when a road constructed by the County, has been maintained or repaired continuously and uninterruptedly for four (4) years by the County, the road shall be deemed to be dedicated to the public to the extent in width that has been actually maintained. The dedication shall vest all right, title, easement and appurtenances in and to the road in the County; and

WHEREAS, the Maintenance Map, shall be filed at the office of the clerk of the circuit court of the County where the road is located. The Maintenance Map shall recite on it that the road is vested in the County and shall be duly certified by the Mayor and Clerk of the Board of County Commissioners of the County. Said filing shall be prima facie evidence of ownership by the County.

NOW, THEREFORE, BE IT RESOLVED BY THE BOARD OF COUNTY COMMISSIONERS OF PALM BEACH COUNTY, FLORIDA, that:

1. The foregoing recitals are hereby reaffirmed and ratified.
2. The Mayor of the Board and the County Engineer are hereby authorized to sign the Specific Purpose Survey (Maintenance Map) and the Clerk is authorized to sign same.

RESOLUTION NO. R-2013

The foregoing Resolution was offered by Commissioner _____ who moved its adoption. The motion was seconded by Commissioner _____ and upon being put to a vote, the vote was as follows:

- Commissioner Steven L. Abrams, Mayor -
- Commissioner Priscilla A. Taylor, Vice Mayor -
- Commissioner Hal R. Valeche -
- Commissioner Paulette Burdick -
- Commissioner Shelley Vana -
- Commissioner Mary Lou Berger -
- Commissioner Jess R. Santamaria -

The Mayor thereupon declared the Resolution duly passed and adopted this _____ day of _____, 20____.

SHARON R. BOCK, CLERK AND
COMPTROLLER

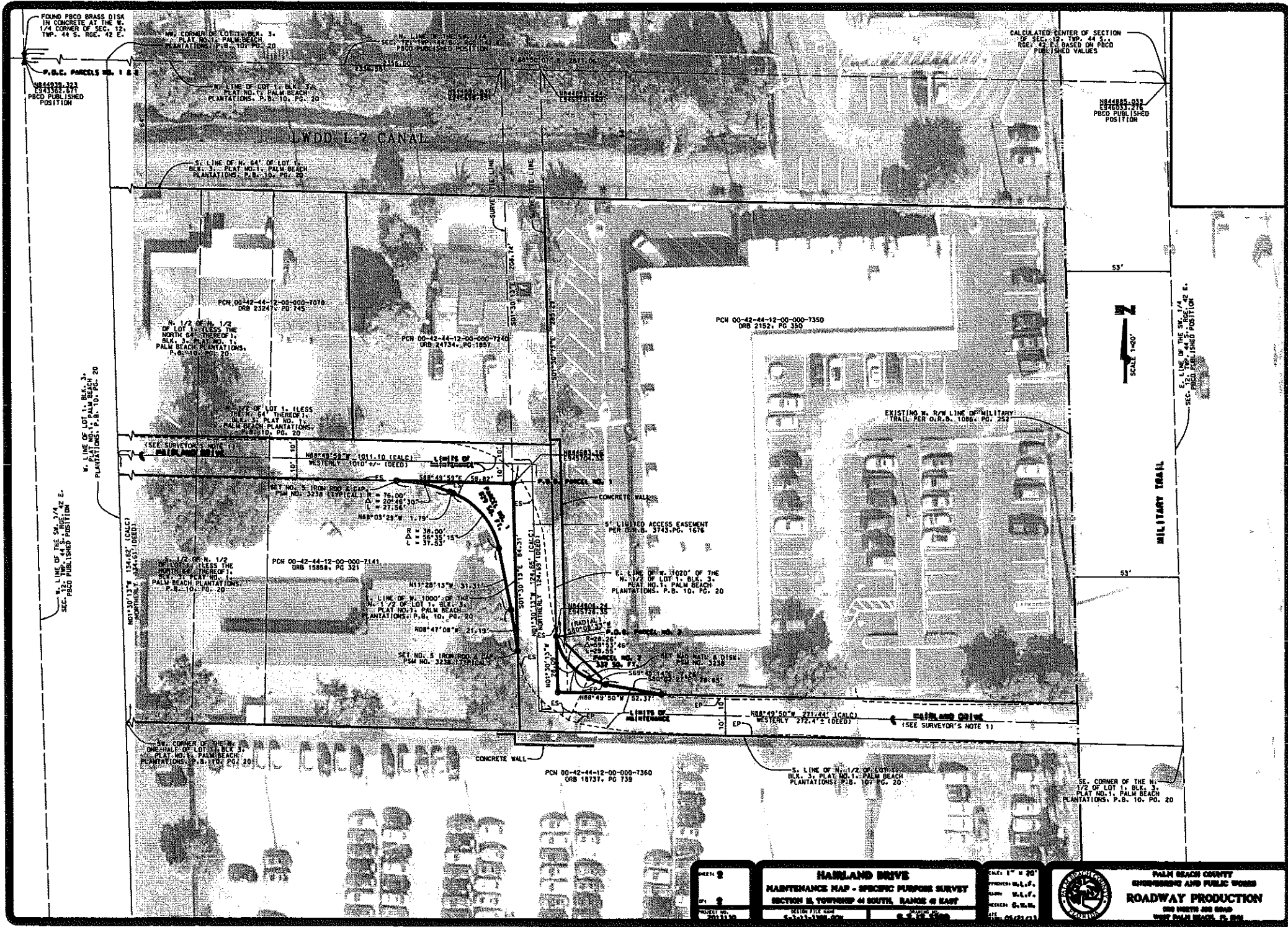
APPROVED AS TO FORM AND
LEGAL SUFFICIENCY:

By: _____
Deputy Clerk

By: _____
County Attorney

ATTACHMENT 3

PAGE 2 of 2



	HAWLAND DRIVE MAINTENANCE MAP - SPECIFIC PURPOSE SURVEY SECTION 8, TOWNSHIP 44 SOUTH, RANGE 4 EAST		SCALE: 1" = 20' DRAWN: M.L.P. CHECKED: M.L.P. DATE: 05/21/2013
	PALM BEACH COUNTY ENGINEERING AND PUBLIC WORKS ROADWAY PRODUCTION ONE NORTH OCEAN BLVD. WEST PALM BEACH, FL 33411		