

**PALM BEACH COUNTY
BOARD OF COUNTY COMMISSIONERS**

WORKSHOP SUMMARY

Meeting Date: September 23, 2014

Department: Criminal Justice Commission

I. EXECUTIVE BRIEF

Title: Palm Beach County Ex-Offender Reentry


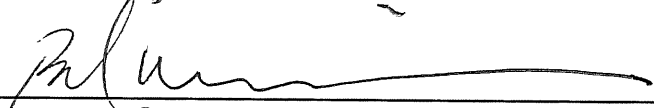
Summary: This workshop will be conducted in four segments as follows:

- Segment 1 will consist of a general historic overview of ex-offender reentry efforts in Palm Beach County (Carey Haughwout, Public Defender and Chair of Reentry Task Force)
- Segment 2 will highlight the coordinated community reentry effort with an emphasis on data collection (Craig Spatara, Manager, Criminal Justice Programs)
- Segment 3 will provide the Board with the results of an independent evaluation by the University of South Florida (John Petrila, College of Public Health, University of South Florida)
- Segment 4 will highlight program successes and discuss sustainability (Diana Stanley, The Lord's Place and Chair of the Reentry Task Force Sustainability Subcommittee)

Background and Policy Issues: Millions of Americans - one in four adults - have arrest or conviction records. The Criminal Justice Commission (CJC) formally adopted the Reentry Task Force as an ongoing committee in November 2008 to examine existing reentry services and service gaps due to geographical, financial or other barriers. Public Defender Carey Haughwout and former Congressman Harry Johnston co-chaired the initial effort. The Reentry Task Force, which now includes seven (7) subcommittees, has produced a Strategic Plan that guides the development of policies and programs. Ex-Offender reentry services are critical in order to reduce the number crime victims, reduce recidivism costs and increase public safety.

Attachments:

1. PowerPoint Presentation

Recommended by:	 Department Director	FOR MIKE RODRIGUEZ	8/26/14 Date
Approved By:	 County Administration		9/3/14 Date

II. FISCAL IMPACT ANALYSIS

A. Five Year Summary of Fiscal Impact:

Fiscal Years	2014	2015	2016	2017	2018
Capital Expenditures	_____	_____	_____	_____	_____
Operating Costs	_____	_____	_____	_____	_____
External Revenues	_____	_____	_____	_____	_____
Program Income (County)	_____	_____	_____	_____	_____
In-Kind Match (County)	_____	_____	_____	_____	_____
NET FISCAL IMPACT	0	_____	_____	_____	_____
No. ADDITIONAL FTE POSITIONS (Cumulative)	_____	_____	_____	_____	_____

Is Item Included In Current Budget? Yes _____ No X
Budget Account No.: Fund _____ Department _____ Unit _____
Object _____ Reporting Category _____

B. Recommended Sources of Funds/Summary of Fiscal Impact:

C. Departmental Fiscal Review:

III. REVIEW COMMENTS

A. OFMB Fiscal and/or Contract Dev. and Control Comments:

8/27/14

OFMB

9/2/14

Contract Dev. and Control

B. Legal Sufficiency:

9/2/14

Assistant County Attorney

C. Other Department Review:

Department Director

PALM BEACH COUNTY EX-OFFENDER REENTRY



Segment 1 – General Overview

Carey Haughwout, *Public Defender and Chair of the
Reentry Task Force*

Palm Beach County Sheriff's Office



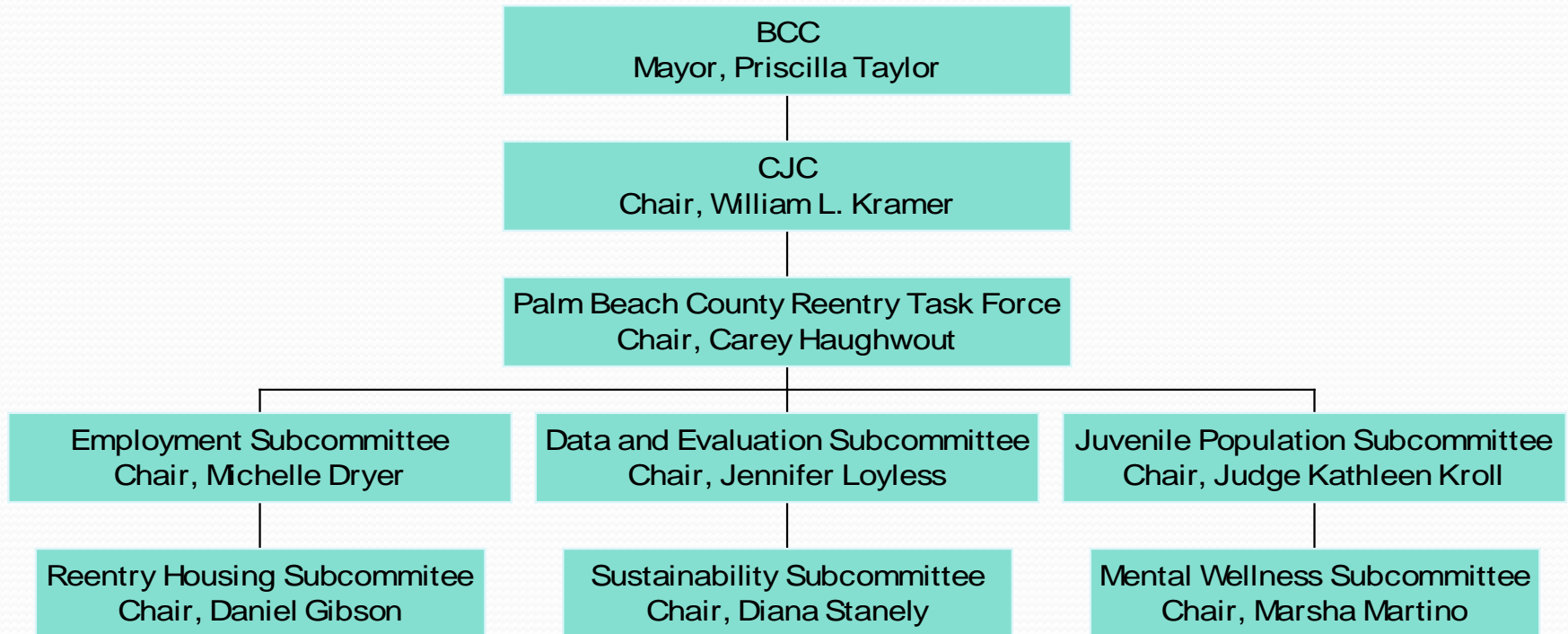
General background

- Today, the US accounts for five percent (5%) of the world's population but has twenty-five percent (25%) of the world's prisoners.
- There were 59,510 arrests in PBC County in 2013.
- 1,200 inmates per year return to PBC from the FDC.
- Two-thirds of these individuals are arrested again within 3 years.
- It costs taxpayers \$18,000 per year to house one inmate in the Florida Department of Corrections.
- Locally, it costs taxpayers \$44,895 per year to house one inmate in Palm Beach County.

59,510 Arrests



REENTRY TASK FORCE STRUCTURE



Reentry Task Force Ongoing Responsibilities

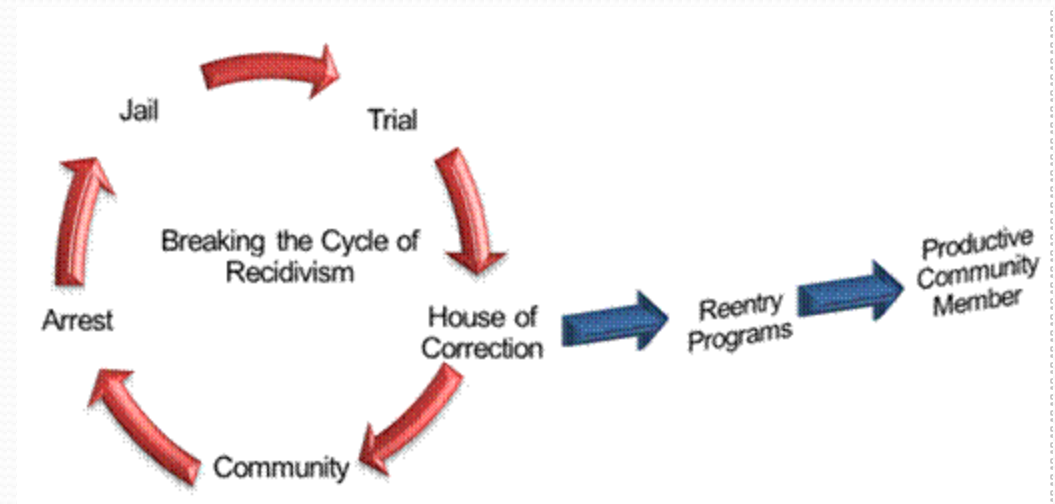
- *Coordinate and Facilitate Resources*
- *Maintain and Develop Partnerships*
- *Evaluate and Implement Changes*
- *Sustain Reentry Services*



Offender Reentry is a Vital Piece of Public Safety

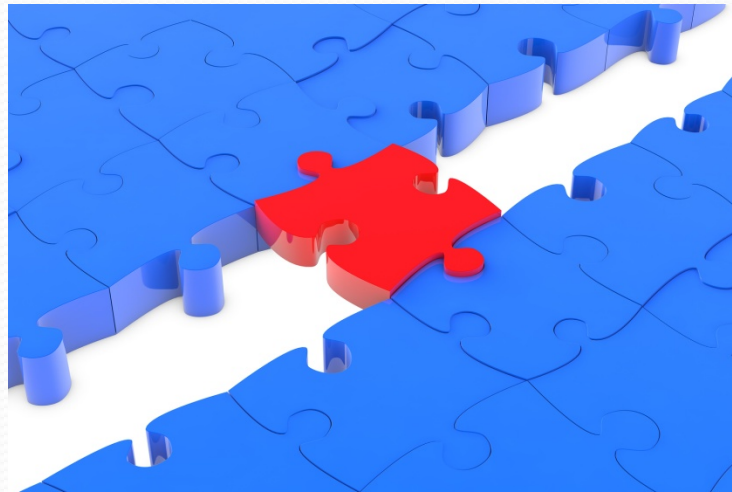
INTENDED REENTRY OUTCOMES

- ✓ Increased Public Safety
- ✓ Reduced Recidivism Rates
- ✓ A Decreased Number of Victims of Crime
- ✓ Improved Quality of Life for Palm Beach County Residents



Segment 2- Community-Based Reentry

Craig Spatara, *Manager, Criminal Justice Programs*



Criminal Justice Commission- \$3,000,000 in Competitive Reentry Grants

COMMUNITY-BASED

Most Reentry efforts in the country are developed and administered by Law Enforcement.

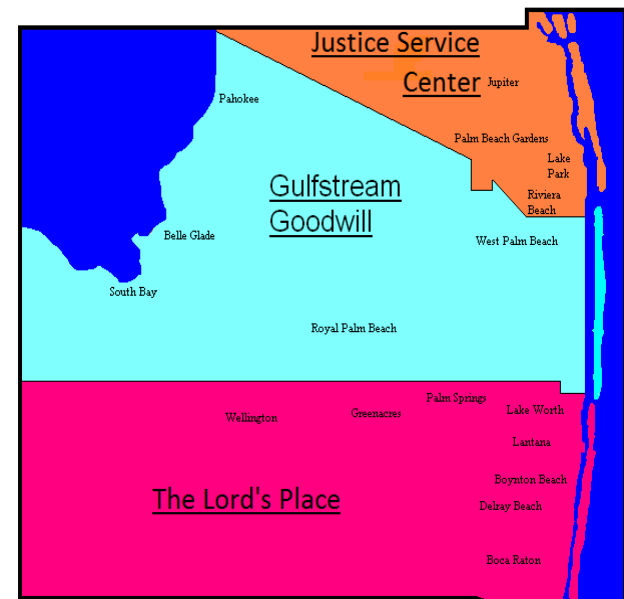
Our partners make us unique:

The Lord's Place

Gulfstream Goodwill

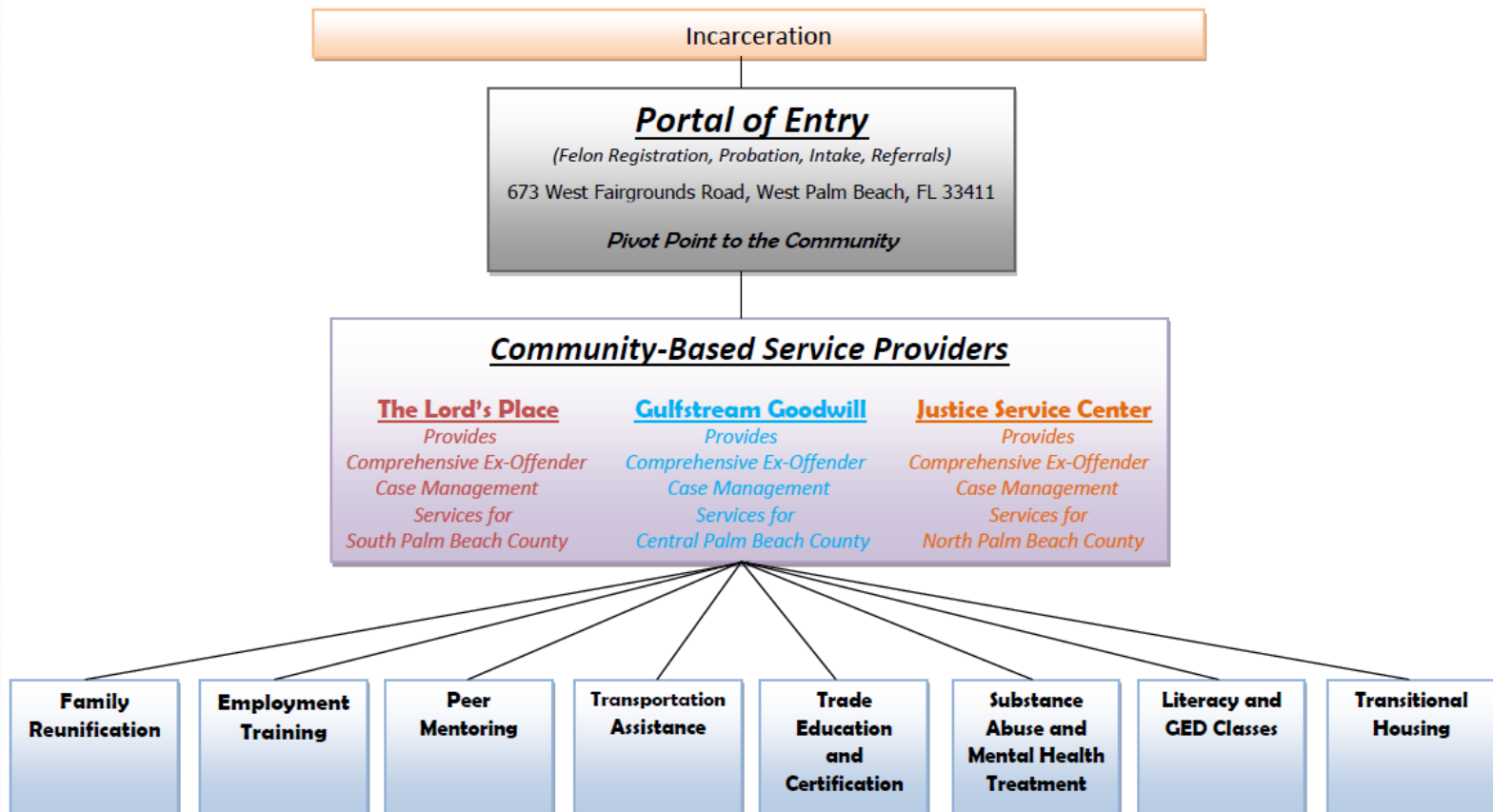
Riviera Beach Justice Service Center

Choice to Change



Reentry Service Structure

Palm Beach County Ex-Offender Reentry Services



Description of Programs

RESTORE – Medium and high risk inmates (384) return to Sago Palm 18-36 months before they are released and receive: Assessment, Victim Impact, Family Reunification, Thinking For a Change, GED, Vocational Training, Transition Planning and Counseling. They are then passed to a non-profit for post-release services.

Community Based Reentry- Every inmate returning to PBC from DOC receives a letter while incarcerated and is paired with a non-profit agency if interested. Services begin upon release.

Back to A Future- Youth returning from residential confinement received enhanced reentry services.

Jail- County sentenced inmates from local jail are paired with a non-profit agency. Minimal services begin inside the jail.

CJC Reentry Network- RENEW

A case management system, RENEW, was developed to ensure offender risk and criminogenic needs are identified and addressed. This system includes on-going risk and needs assessment, responsiveness, case planning, case plan follow-up and documentation, transfer of records, staff training and quality assurance.

Consistent information flows

Assessment ⇨ Planning ⇨ Execution of Services

The CJC Reentry Network (RENEW) is currently tracking 2,195 ex-offenders in PBC

The screenshot shows a web interface for the Palm Beach County CJC Reentry Network (RENEW). At the top, the title "Palm Beach County CJC Reentry Network (RENEW)" is displayed. Below the title is a "Log In" section. This section contains three input fields: "User ID", "Password", and "Agency" (which is a dropdown menu). Below these fields are two buttons: "Log In" and "Change Password". At the bottom of the page, there is a copyright notice: "© Copyright 2012 Palm Beach County, FL".

Demographics for local participants

Men	93%
Women	7%
White	38%
African American	62%
Average Age	37

Other Reentry Issues

- Restoration of rights for felons
- Ban the Box
- Collateral Consequences
- Identification
- Education
- Employment (Businesses that are willing to hire ex-offenders)
- Gain time for educational services
- Sex Offender issues (place to live, classification, monitoring)
- Offenders Released with Fines (Some owe \$50,000)
- Internet Access/Skype for Pre-Release Training
- Suspending Driver's Licenses for court costs



Segment 3- Independent Evaluation

John Petril, *University of South Florida*



Independent Evaluation

University of South Florida (USF)

- The RESTORE initiative has led to significant improvements in County funded reentry programs and as a result a systemic approach exists for reentry, at least for that portion funded by RESTORE;
- The RENEW data system provides an integrated data system that is essential to the continued success of the County's reentry programs and also provides a vehicle for performing long-term and cross-system evaluation of individual client outcomes;
- The administrative position established to provide CJC oversight of reentry programs across the County has been an essential ingredient to the success of RESTORE;
- The County's approach to reentry, as exemplified by RESTORE, can become a ***national model*** if sustained in Palm Beach County.

REENTRY Results

“While 31% of those in RESTORE were rearrested within a year of release, the re-arrest rate for the comparison group was 68% or more than double. This must be marked as a success for RESTORE, given that the groups were comparable in terms of prior convictions and average length of time and numbers of times in prison.”

USF Recommendations

- 1. The RESTORE program should be maintained and the principles that govern it should inform the County's reentry efforts more generally including particularly those services that were to be provided through the Portal.**
- 2. All returning ex-offenders in the County should be tracked in the RENEW data system regardless of source of funding and regardless of whether the individual is placed in a reentry program from a FDC facility or the County Jail.**
- 3. The coordinator position that has been established to oversee and guide the RESTORE project should be maintained.**
- 4. Priority should be given to tracking outcomes, particularly recidivism, over a 36 month period after release to the community so that the County uses the national standard for measuring recidivism and to determine whether the unusually low rates of return to FDC in the first 12 months post-release are maintained.**
- 5. Focusing on mental illness and substance abuse issues should become part of planning discussions among CJC and provider staff over the next year.**
- 6. Placing people on Medicaid should be a priority, starting with those who were enrolled in the past, particularly if Florida eventually expands Medicaid in some fashion in response to the Affordable Care Act.**
- 7. Efforts should be renewed to create vocational training opportunities in Sago, particularly, as part of pre-release planning and services.**

National Evaluation

The primary goals of the evaluation are to assess the implementation, effects, and cost-effectiveness of adult offender reentry programs funded by BJA. Seven SCA AORDP programs were selected for the evaluation:

- California: Women's Reentry Achievement Program (WRAP), Solano County Health & Social Services Department
- Connecticut: New Haven Reentry Initiative (NHRI), Connecticut Department of Correction
- Florida: Regional and State Transitional Ex-Offender Reentry (RESTORE) Initiative, Palm Beach County Criminal Justice Commission
- Massachusetts: Boston Reentry Initiative (BRI), Boston Police Department
- Minnesota: High Risk Recidivism Reduction Project, Minnesota Department of Corrections
- New Jersey: Community Reintegration Program (CRP), Hudson County Department of Corrections
- Pennsylvania: ChancesR, Beaver County Behavioral Health and Developmental Services

Segment 4- The Future

Diana Stanley, *The Lord's Place, Chair of the Sustainability Subcommittee*



Second Chances

RESTORE Video

<http://www.cjcrestore.com/>

Produced by youth at the West Palm Beach Youth
Empowerment Center

Save and Change Lives



Reentry Partners Investing in the Community

Office of the Public Defender
Palm Beach State College
Palm Beach County Sheriff's Office
NAMI
Prison Fellowship
The Lord's Place
True Fast Ministries
Parent Child Center
PBC Human and Veteran Services
City of Pahokee
City of Highland Beach
Children's Services Council
Arts Counseling Agency

Veteran's Administration
Literacy Coalition
Florida Department of Juvenile Justice
Matthew 25 Ministries
Salvation Army
Court Administration
CARP
South County Mental Health
Palm Beach County School District
Palm Healthcare Foundation
Jerome Golden Center
Department of Children and Families
Community Partnership

CareerSource
Southeast Florida Behavioral Health Network
Office of the State Attorney
Gulfstream Goodwill
JAY Ministry
Florida Department of Corrections
City of West Palm Beach
Riviera Beach Justice Service Center
Palm Beach Department of Public Safety
ChildNet
Florida Action Committee
Legal Aid Society of Palm Beach County
Family Preservation Services of Florida

A Good Investment- Recidivism (Arrests)

Program	Participants #	Arrests #	Total %	Baseline Rate %	Relative Reduction
RESTORE	311	81	26.0 %	68 %	62 %
Community	358	112	31.2 %	68 %	54 %
Jail	186	73	39.2 %	51 %	23 %
Juvenile	36	8	22.2%	TBD	TBD

It costs taxpayers \$18,000 per year to house one inmate in the Florida Department of Corrections. Locally, it costs taxpayers \$44,895 per year to house one inmate in Palm Beach County.

Questions?

