

**Agenda Item No.: 3-C-4**

**PALM BEACH COUNTY  
BOARD OF COUNTY COMMISSIONERS  
AGENDA ITEM SUMMARY**

---

<b>Meeting Date:</b>	<b>April 19, 2016</b>	<input checked="" type="checkbox"/> [x]	<b>Consent</b>	<input type="checkbox"/> [ ]	<b>Regular</b>
		<input type="checkbox"/> [ ]	<b>Workshop</b>	<input type="checkbox"/> [ ]	<b>Public Hearing</b>
<b>Department:</b>					
<b>Submitted By:</b>	<b>Engineering &amp; Public Works Department</b>				
<b>Submitted For:</b>	<b>Roadway Production Division</b>				

---

**I. EXECUTIVE BRIEF**

**Motion and Title:** Staff recommends motion to approve: Supplement No. 6 (Supplement) to project agreement R2007-0842 in the amount of \$123,523.84 with Wantman Group, Inc. (WGI), for professional services for the Australian Avenue and Palm Beach Lakes Boulevard Intersection Improvements project (Project).

**SUMMARY:** Approval of this Supplement will provide the professional services necessary for the preparation of roadway and signing and marking plans and specifications for the construction of a single right turn lane on Palm Beach Lakes Boulevard; and the drainage improvement on both Australian Avenue and Palm Beach Lakes Boulevard for the Project. The Small Business Enterprise (SBE) goal for the Project is 15%, but WGI committed to 29% SBE participation. WGI has proposed 0% SBE participation for this Supplement, however, including this supplement, WGI's overall SBE participation would be 32.60% for this Project. WGI is a Palm Beach County company.

District 7 (MRE)

**Background and Justification:** On June 5, 2007, the Board of County Commissioners (Board) approved project agreement R2007-0842, with WGI to provide professional services required to prepare design plans and construction bid documents for the Project. Following a number of coordination meetings with the City of West Palm Beach and its residents, Palm Beach County (County) revised the scope of the Project to eliminate any traffic capacity improvements on Australian Avenue, and to concentrate instead on capacity improvements on the east side of the intersection of Australian Avenue and Palm Beach Lakes Boulevard. The County desires WGI to design and prepare roadway and signing and marking plans and specifications for the construction of the Project as detailed in Exhibit "A" of the attached Supplement. This will include a single right turn lane on Palm Beach Lakes Boulevard and the drainage improvement on both Australian Avenue and Palm Beach Lakes Boulevard.

(Continued on Page 3).

**Attachments:**

1. Location Map
  2. Supplement No. 6 with Exhibits "A", "B", "C", and "D" and Certificate of Insurance (2)
  3. Project Work Schedule
- 

Recommended by: *MR*

*Ornel A. Fernandez*  
Division Director

*3/22/16*  
Date

Approved By: *T. Wild*

County Engineer

Date

II. FISCAL IMPACT ANALYSIS

A. Five Year Summary of Fiscal Impact:

Fiscal Years	2016	2017	2018	2019	2020
Capital Expenditures	<u>\$123,524</u>	<u>-0-</u>	<u>-0-</u>	<u>-0-</u>	<u>-0-</u>
Operating Costs	<u>-0-</u>	<u>-0-</u>	<u>-0-</u>	<u>-0-</u>	<u>-0-</u>
External Revenues	<u>-0-</u>	<u>-0-</u>	<u>-0-</u>	<u>-0-</u>	<u>-0-</u>
Program Income (County)	<u>-0-</u>	<u>-0-</u>	<u>-0-</u>	<u>-0-</u>	<u>-0-</u>
In-Kind Match (County)	<u>-0-</u>	<u>-0-</u>	<u>-0-</u>	<u>-0-</u>	<u>-0-</u>
NET FISCAL IMPACT	<u>\$123,524</u>	<u>-0-</u>	<u>-0-</u>	<u>-0-</u>	<u>-0-</u>
# ADDITIONAL FTE					
POSITIONS (Cumulative)					

Is Item Included in Current Budget?                      Yes    X    No

Budget Account No:

Fund 3502    Dept 361    Unit 1148    Object 6505

Recommended Sources of Funds/Summary of Fiscal Impact:

Road Impact Fee Fund - Zone 2

Australian Ave/Banyan Blvd to 45<sup>th</sup> St/Palm Beach Lakes Blvd

Authorization	- Basic Services	\$113,191.44
	- Reimbursable Services	\$ 5,860.00
	- Optional Services	\$ 4,472.40
Total Authorization		<u>\$123,523.84</u>

C. Departmental Fiscal Review:

Alicia Kovalainen

III. REVIEW COMMENTS

A. OFMB Fiscal and/or Contract Dev. and Control Comments:

Sherry Br  
3/29/16 OFMB 3/29/16

Janis J. Jantala 3/31/16  
Contract Dev. and Control 3/30/16

B. Approved as to Form  
and Legal Sufficiency:

Marlene R. Lehto 4/5/16  
Assistant County Attorney

C. Other Department Review:

\_\_\_\_\_  
Department Director

This summary is not to be used as a basis for payment.

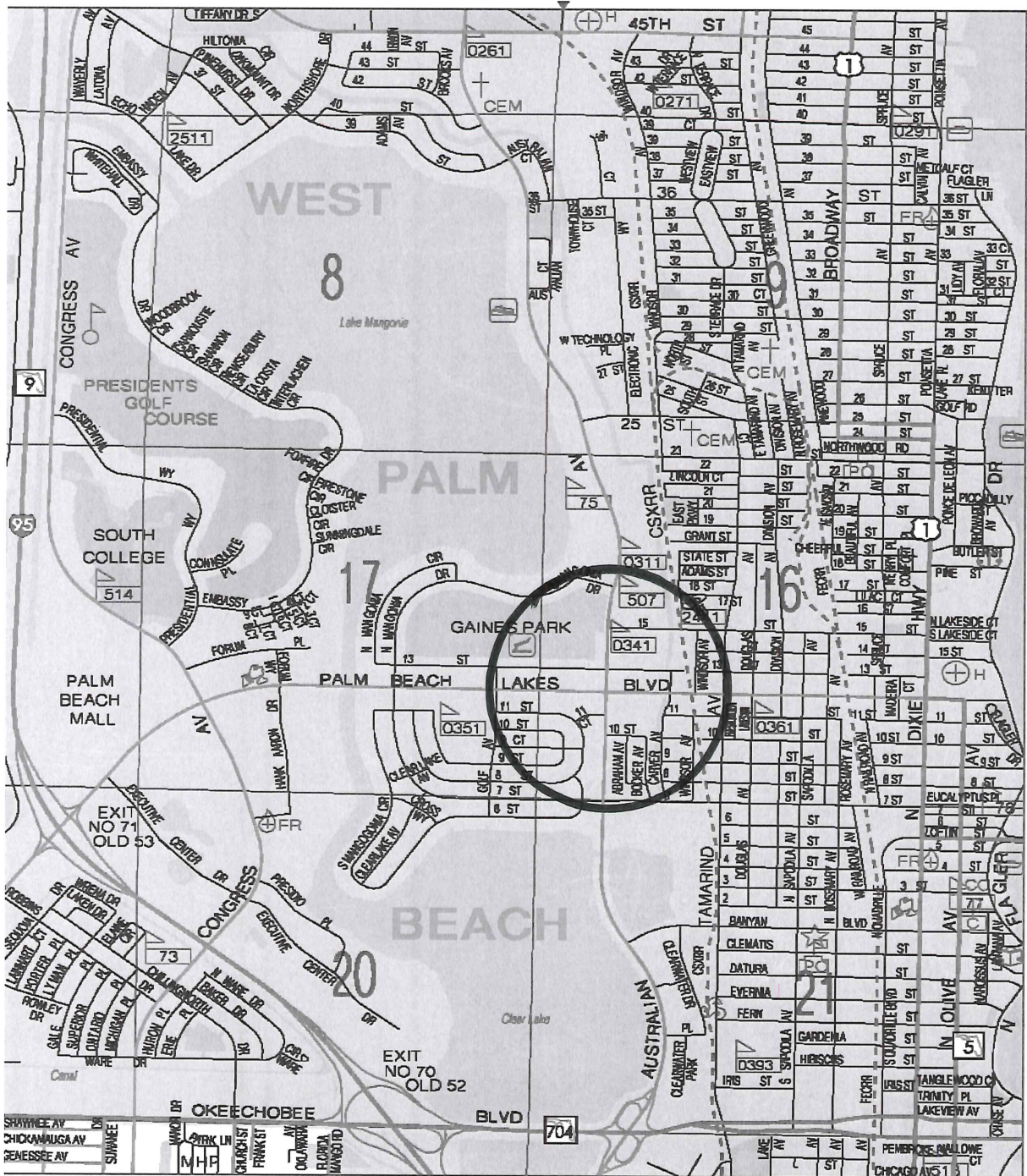
**Background and Justification:** (Continued from Page 1).

The fee, as detailed in Exhibit "A" of the attached Supplement, has been negotiated as just and reasonable compensation as follows:

Basic Services (Lump Sum) .....	\$113,191.44	(Roadway Design, Drainage Design, Plans, Permitting, Signing and Marking Design, Plans, Utility Coordination).
Reimbursable Expenses (Not to Exceed) \$	5,860.00	(Geotechnical, Permit Fees).
Optional Services (Not to Exceed).....	\$ 4,472.40	(Public Involvement).
Total:	<u>\$123,523.84</u>	

After reviewing the attached Supplement and finding it in proper order, staff recommends the Board's approval.

**AUSTRALIAN AVENUE AND PALM BEACH LAKES BOULEVARD  
INTERSECTION IMPROVEMENTS  
PALM BEACH COUNTY PROJECT NO. 2005502A**



LOCATION MAP

ATTACHMENT 2

**SUPPLEMENT NO. 6 BETWEEN**  
**PALM BEACH COUNTY**  
**AND**  
**WANTMAN GROUP**  
**FOR PROFESSIONAL ENGINEERING SERVICES ON**  
**AUSTRALIAN AVENUE AND PALM BEACH LAKES BOULEVARD**  
**INTERSECTION IMPROVEMENTS**  
**PROJECT NO. 2005502A**  
**PALM BEACH COUNTY, FLORIDA**

**THIS SUPPLEMENT No. 6,** made and entered into this day of \_\_\_\_\_ 2016, by and between **Palm Beach County (COUNTY)**, a Political Subdivision of the State of Florida, by and through its Board of County Commissioners, and, **Wantman Group, Inc.**, a Florida Corporation with an address of **2035 Vista Parkway, Suite 100, West Palm Beach, Florida 33411**, hereinafter **CONSULTANT**.

**WITNESSETH**

**WHEREAS**, the **COUNTY** and **CONSULTANT** entered into a Project Agreement dated **June 5, 2007 (R2007-0842)**, to provide professional engineering services for the design of **Australian Avenue and Palm Beach Lakes Boulevard Intersection Improvements**, Palm Beach County, Florida (hereinafter **PROJECT**); and.

**WHEREAS**, the **COUNTY** now desires for the **CONSULTANT** to design and prepare roadway and signing and marking component sets and specifications for the construction of the single turn lane on Palm Beach Lakes Boulevard and also the drainage improvement on both Australian Avenue and Palm Beach Lakes Boulevard for the **PROJECT**; and

**RE: Australian Avenue and Palm Beach Lakes Boulevard Intersection Improvements  
Project No. 2005502A**

**WHEREAS**, the following fee has been negotiated as just and reasonable compensation for these professional services to be performed by the **CONSULTANT**:

Basic Services in a lump sum fee of **\$113,191.44**;

Reimbursable Services (Not to Exceed) \$5,860.00;

Optional Services (Not to Exceed) \$4,472.40;

Totaling **\$123,523.84**

**NOW, THEREFORE, THIS INDENTURE WITNESSETH:** That for and in consideration of the mutual benefits to flow from each to the other, the parties hereto agree as follows:

1. The **CONSULTANT** agrees to provide professional services as described in Exhibit "A" of this Supplement known as "SCOPE OF WORK & FEE".
2. The **CONSULTANT** agrees to "CERTIFICATION" statements as described in Exhibit "B" of this Supplement.
3. The **CONSULTANT** agrees to Small Business Enterprise (SBE) Participation, described in Exhibit "C" of this Supplement.
4. The **CONSULTANT** has provided a sub-consultant Letter of Intent to perform as an SBE as described in Exhibit "D" of this Supplement.
5. The **COUNTY** agrees to pay the **CONSULTANT** a fee of One Hundred Twenty-Three Thousand Five Hundred Twenty-Three Dollars and Eighty-Four Cents (\$123,523.84).

Except as hereby amended, changed or modified, all other terms and conditions of the original Agreement dated **June 5, 2007 (R2007-0842)**, and;

Supplements and Amendments thereto, shall remain in full force and effect.

**RE: Australian Avenue and Palm Beach Lakes Boulevard Intersection Improvements**  
**Project No. 2005502A**

**IN WITNESS WHEREOF**, the parties hereto have made and executed this Supplement as of the day and year first above written.

OWNER:

**Palm Beach County, Florida**, a  
Political Subdivision of the  
State of Florida

BOARD OF COUNTY COMMISSIONERS

BY: \_\_\_\_\_  
Mary Lou Berger, Mayor

ATTEST:  
Sharon R. Bock, Clerk & Comptroller  
Circuit Court

BY: \_\_\_\_\_  
Deputy Clerk

S E A L

APPROVED AS TO TERMS  
AND CONDITIONS:

BY: *Ornela A. Fernandez*

APPROVED AS TO FORM & LEGAL  
SUFFICIENCY:

\_\_\_\_\_  
County Attorney

CONSULTANT:

**Wantman Group, Inc.**  
a Florida Corporation

BY: *[Signature]*  
Joel Wantman, P.E., Chairman

CORPORATE SEAL



WITNESS:  
BY: *[Signature]*

*Tim Nicolson*  
(Printed Name)

BY: *Glenna Jones*

Glenna Jones  
(Printed Name)



# SCOPE OF Roadway DESIGN SERVICES

Wantman Group, Inc.

## AUSTRALIAN AVENUE AND PALM BEACH LAKES BOULEVARD INTERSECTION IMPROVEMENTS

Supplemental Agreement No. 6

Palm Beach County Project Number: 2005502A

FINAL Submittal: February 1, 2016

*OK to process  
for scope and  
fee.  
KOFarnell  
2/1/16  
E. Ferguson  
2/1/16*

### I. DESCRIPTION

The project consists of construction of an eastbound turning lane on Palm Beach Lakes Boulevard between Australian Avenue and Carver Avenue and drainage improvements on the west side of Australian Avenue and south side of Palm Beach Lakes Blvd. The main objective of the of the drainage improvements is to provide relief to the existing drainage outfalls south of the intersection of Australian Avenue and Palm Beach Lakes Blvd. This will be accomplished by reconstructing part of the existing drainage trunkline south of the intersection and routing collected stormwater east to the Carver Canal via a new larger drainage trunkline along the southside of Palm Beach Lakes Blvd. Anticipated limits of drainage improvements along Australian Avenue are from south of 10<sup>th</sup> Street to Palm Beach Lakes Boulevard.

### II. OBJECTIVES

Wantman Group, Inc. as a prime consultant shall design and prepare roadway and signing and marking component sets and specifications for the construction of the single turn lane on Palm Beach Lakes Blvd. and also the drainage improvement on both Australian Avenue and Palm Beach Lakes Blvd. project. Our elements of work will include:

- A. Roadway Design
- B. Drainage Design & Permitting
- C. Signing & Pavement Marking Design
- D. Utility Coordination
- E. Geotechnical Services (provided by Tierra South Florida)



### III. SCOPE OF SERVICES

The services to be provided within Section III (Scope of Services) shall address items A through D in Section II in accordance with the Palm Beach County (PBC) Thoroughfare Road Design Procedures, February 2006, and the latest State criteria, as applicable.

#### A. ROADWAY DESIGN

Roadway Design will include a complete set of roadway plans and specifications, required for construction. Specific items of interest include the following:

1. Roadway plans will be prepared to provide for the construction of the eastbound turn lane on Palm Beach Lakes Blvd. east of Australian Avenue and the drainage improvements on Australian Avenue and Palm Beach Lakes Blvd. This effort will include (at a minimum): Key Sheet, Typical Sections and Notes, Summary of Quantities, General Notes, Plan and Profile Sheets at a scale of 1"= 40', Cross Sections at 50' intervals, Quantities and Computation Books with 96% and final phase submittals, Cost Estimates with the 96% and Final phase submittals and other miscellaneous detail sheets as necessary to produce final construction bid plans.
2. All roadway improvement elements will be designed within existing Palm Beach County right-of-way.
3. Typical Section development will consider the following criteria:
  - a. Match existing typical section,\*  
\*Curb & gutter may be proposed on the outside in some areas due to proximity to the existing right-of-way.
  - b. 11' minimum border width measured from edge of travel lanes,
  - c. Design Speed of 35 mph (Australian Avenue)
  - d. Design Speed of 35 mph (Palm Beach Lakes Blvd.)
4. A Design Speed of 25 mph (turn lanes assumed to be 10 mph less than mainline) will be utilized for establishing both the horizontal and vertical geometry for the Palm Beach Lakes Blvd. turn lane.
5. All existing pedestrian features within the limits of the project will be upgraded to be fully compliant with Americans with Disabilities Act (ADA).
6. WGI will participate in regularly scheduled progress and coordination meetings throughout the life of the project. This scope assumes at least

**Exhibit "A" – Page 3 of 15**

one (1) meeting with PBC personnel every four (4) months, over a 13-month period, exclusive of phase review meetings.

7. All plans and specifications will be prepared in accordance with the latest PBC and Florida Department of Transportation (FDOT) Standards, as applicable. This includes the 2016 FDOT Roadway and Traffic Design Standards Index, the 2013 Standard Specifications for Road and Bridge Construction and the 2013 Manual of Uniform Minimum Standards for Design, Construction, and Maintenance of Streets and Highways (Greenbook).

**B. DRAINAGE DESIGN & PERMITTING**

The Drainage Design and associated plans will be prepared in substantial conformance with South Florida Water Management District (SFWMD) criteria. Specific items of interest include the following:

1. Drainage requirements for the proposed improvements on Palm Beach Lakes Blvd will be determined through research, documentation and evaluation of existing and proposed conditions within the project limits. This task will augment the existing work previously performed for Australian Avenue.
2. Once existing conditions have been accurately determined, the proposed drainage systems will be laid out and evaluated using the existing data and the following criteria:
  - a. Design storm sewer systems to meet County hydrologic design criteria for hydraulic clearances,
  - b. Evaluate proposed inlet locations for spread,
  - c. Design of connection to existing storm sewer systems.
3. A complete drainage report with all documentation and associated calculations will be prepared.
4. Drainage plans and details will be included in the Roadway Plans. This effort will include (at a minimum): Drainage Maps at a scale of 1"=200', Drainage Structure Sheets and Notes and Miscellaneous Drainage Details.
5. These efforts also include site visits with applicable agencies and coordination necessary for the complete preparation of all SFWMD permit modifications.

**Exhibit "A" – Page 4 of 15**

6. Submittal of permit modification package to SFWMD. Preparation of necessary documentation and response to any Requests for Additional Information received from the District.
7. Modification to previously prepared plans and application necessary to obtain SFWMD dewatering permit. Permitting efforts assume dewatering can be done conventionally and no contamination is present, requiring specialized ground water modeling.

**C. SIGNING AND PAVEMENT MARKING PLANS**

Signing and Pavement Marking Plans will be prepared for the project limits. These plans will be prepared in accordance with PBC and FDOT Standards, as applicable, and will be a separate component plan set.

**D. UTILITY COORDINATION**

WGI will assist the Palm Beach County utility coordinator with the utility coordination effort. Activities will include attending two (2) utility coordination meetings (pre-65% and post-96% submittals), reviewing Utility Agency Owner's (UAO) "red-lined" plans, and plotting applicable utility information on the roadway plans.

Separate Utility Adjustment Sheets are not anticipated. Disposition of existing utilities, as provided by utility agencies, will be depicted on the roadway plan and profiles sheets.

WGI will also coordinate with the Utilities/Municipal relocation project by the City of West Palm Beach for the utilities along Australian Ave and Palm Beach Lakes Blvd.

**E. GEOTECHNICAL SERVICES**

See attached Scope of Services provided by Tierra South Florida.

**OPTIONAL SERVICES**

Preparation of renderings and presentation/exhibit boards for the ultimate 6 lane section for Australian Avenue, utilized by PBC staff at public involvement meetings with the City of West Palm Beach.

#### **IV. LENGTH OF SERVICES**

The Basic Services are anticipated to be completed within 14 months from the date of the Letter of Authorization. See attached, detailed Design Phase and Permitting schedule.

Master Summary - Estimate of Work Effort & Fee Proposal

PBC Project No.: 2005502A  
WGI Project No.: 20510530.XX  
Job Description: Australian Ave and palm Beach Lakes Blvd Intersection Improvements - Supplement #6

Consultant: WANTMAN GROUP, INC.  
Date Prepared: 2/1/2016 (Revised)  
From: 0.25 mile along Australian Ave  
To: 0.25 mile along Palm Beach Lakes Blvd  
Length: 0.50 miles

Work Element / Activity	Project Manager		Senior Engineer		Engineer		Engineer Intern		Senior CADD Technician		Total Man Hours By Activity	Salary Cost By Activity
	Staff Hours	Hourly Rate	Staff Hours	Hourly Rate	Staff Hours	Hourly Rate	Staff Hours	Hourly Rate	Staff Hours	Hourly Rate		
A. ROADWAY DESIGN/PLANS	65	\$56.00	86	\$50.00	108	\$42.00	86	\$29.15	85	\$29.75	✓ 430	\$17,511.65
B. DRAINAGE DESIGN/PLANS & PERMITTING	46	\$56.00	61	\$50.00	76	\$42.00	61	\$29.15	61	\$29.75	✓ 305	\$12,410.90
C. SIGNING & MARKING PLANS	17	\$56.00	22	\$50.00	28	\$42.00	22	\$29.15	23	\$29.75	✓ 112	\$4,553.55
D. UTILITY COORDINATION	12	\$56.00	16	\$50.00	20	\$42.00	16	\$29.15	16	\$29.75	✓ 80	\$3,254.40
Totals	✓ 140	✓ \$7,840.00	✓ 185	✓ \$9,250.00	✓ 232	✓ \$9,744.00	✓ 185	✓ \$5,392.75	✓ 185	✓ \$5,503.75	✓ 927	✓ \$37,730.50
ADDITIONAL/OPTIONAL SERVICES	✓ 8	\$56.00	0	\$50.00	✓ 8	\$42.00	✓ 12	\$29.15	✓ 12	\$29.75	✓ 40	✓ \$1,490.80
<div><div>Total Burdened Salary Costs By Activity</div><div>A. ROADWAY DESIGN/PLANS \$52,534.92 B. DRAINAGE DESIGN/PLANS &amp; PERMITTING \$37,232.68 C. SIGNING &amp; MARKING PLANS \$13,660.64 D. UTILITY COORDINATION \$9,763.20 Total ✓ \$113,191.44</div></div>												
<div><div>Subconsultant Fees</div><div>A. Tierra South Florida ✓ \$4,310.00 B. C. D. Total ✓ \$4,310.00</div></div>												
<div><div>Optional Services</div><div>Total Activity Salary Costs \$1,490.80 1.) Overhead Additives a.) Combined Administrative &amp; General &amp; Fringe Benefits Cost (limited to PBC maximum) ✓ 167.857% ✓ \$2,502.41 Subtotal (Salaries + Combined Overhead) ✓ \$3,993.21 2.) Operating Margin Cost (Fixed Fee) ✓ 12% ✓ \$479.19 Subtotal (Burdened Salaries + Operating Margin) \$4,472.40 TOTAL OPTIONAL SERVICES FEE (WGI) ✓ \$4,472.40</div></div>												
<div><div>Permit Fees</div><div>A. South Florida Water Management District (SFWMD Water-Use) ✓ \$350.00 B. South Florida Water Management District (Minor Modification) ✓ \$1,200.00 C. Total ✓ \$1,550.00</div></div>												
2/1/2016 , Printed Date												
<div><div>Total Contract Fee Computations</div><div>Total Activity Salary Costs \$37,730.50 1.) Overhead Additives a.) Combined Administrative &amp; General &amp; Fringe Benefits Cost (limited to PBC maximum) ✓ 167.857% ✓ \$63,333.29 Subtotal (Salaries + Combined Overhead) ✓ \$101,063.79 2.) Operating Margin Cost (Fixed Fee) ✓ 12% ✓ \$12,127.65 Subtotal (Burdened Salaries + Operating Margin) \$113,191.44 TOTAL LUMP SUM FEE (WGI) ✓ \$113,191.44</div></div>												
<div><div>REIMBURSABLE EXPENSES</div><div>Subconsultants: Tierra South Florida (Geotechnical Services) ✓ \$4,310.00 Permit Fees ✓ \$1,550.00 TOTAL REIMBURSABLE EXPENSES ✓ \$5,860.00</div></div>												
OPTIONAL SERVICES (INCL: REIMBURSABLES) ✓ \$4,472.40												
TOTAL MAXIMUM LIMITING FEE ✓ \$123,523.84												

Exhibit "A" - Page 6 of 15

3.0 multiplier

Australian Ave and Palm Beach Lakes Blvd. Intersection Improvements  
Supplemental Agreement No. 6

Exhibit "A" – Page 7 of 15

Staff Hour Estimate

WANTMAN GROUP, INC.  
2035 VISTA PARKWAY  
WEST PALM BEACH, FL 33411  
(561) 687-2220

Date: February 1, 2016  
PBC Project No.: 2005502A  
WGI Project No.: 20510530.XX

A. ROADWAY DESIGN/PLANS

	Scale	Basis of Estimate	No. of Units/Sheets	Manhours/ Unit/Sheet	Total Manhours	Comments
ROADWAY PLANS						
1 Key Sheet	N/A	SHT	1	4	4	Update for new project limits/specs.
2 Typical Sections and Notes	N/A	LS	4	12	48	Assume 2 Typical Sections Sheets (Australian Ave & Palm Beach Lakes Blvd.) + 1 Details Sheet (RT Turns, Misc Details, etc.) + General Notes Sheet
3 Summary of Quantities	N/A	SHT	2	8	16	Pay Item Table + Pay Item Footnotes+ Quantity Summary Tables
4 Plan Sheets	40	SHT	5	20	100	new roadway and drainage design and associated call outs for approx. 1800' of proposed improvements + approx. 400' of coverage beyond begin/end project = 2600'. 2600'/600' depicted per sheet = 5 sheets
5 Profile Sheets	40	SHT	2	16	32	new roadway and drainage and the associated call outs Palm Beach Lakes Blvd.
6 Side Road and/or Curb Return Profiles	N/A	EA	5	2	10	Design new curb returns at entrance to Valero gas station and GP Plaza (x2), R&B properties (x2) and Carver Ave
7 Miscellaneous Design or Construction Details	N/A	LS	1	16	16	Milling/Resurfacing Detail (8 hrs) + 1 additional sheet for miscellaneous construction details.
8 Cross Sections	20/10	EA	26	3	78	900' of proposed improvements at 50' intervals. 900'/50 + 2 before and after = 26 cross sections.
9 Driveway Half-Sections	1"= 20'	SHT	4	2.5	10	4 driveways impacted along Palm Beach lakes blvd = Total driveways impacted.
TRAFFIC CONTROL						
1 Traffic Control Plans (MOT)	N/A	LS	0	0	0	N/A
MISCELLANEOUS TASKS						
1 Quantities/Computation Books	N/A	LS	1	48	48	96% Submittal (32 hrs) + Final Plans (16 hrs)
2 Cost Estimates	N/A	EA	2	8	16	2 estimates (96% and Final Plans)
3 Design Documentation and Data Collection	N/A	LS	1	8	8	Geometric Calc, Correspondence and Data Collection/Research
4 Field Reviews	N/A	LS	2	4	8	Initial Field Review and Constructability Field Review (1 review x 2 people x 4 hrs) = 8 hrs.
COORDINATION						
1 Coordination with PBC Engineering	N/A	LS	4	6	24	Assume 4 total meetings - 2 people @ 3 hrs. Inclusive of Phase Reviews as needed + Teleconferences.
2 Coordination w Other Agencies	N/A	LS	2	6	12	Assume 4 total meetings w/ City, Project Stakeholders, etc. - 2 people @ 3 hrs.
OPTIONAL SERVICES						
1 Assist PBC Engineering with Public Involvement	N/A	LS	1	40	40	Revisions to preliminary roadway design (Horizontal Layout) to extend project from previous limits. Revisions extended project to 7th Street to the south and to the Gaines Park Entrance to the north. Preparation of Public Meeting board/graphics and updates to board, driveway layouts and details for subsequent meetings.
ROADWAY PHASE TOTAL					430	
OPTIONAL SERVICES TOTAL					40	

Australian Ave and Palm Beach Lakes Blvd. Intersection Improvements  
Supplemental Agreement No. 6

Staff Hour Estimate

WANTMAN GROUP, INC.  
2035 VISTA PARKWAY  
WEST PALM BEACH, FL 33411  
(561) 687-2220

Date: February 1, 2016  
PBC Project No.: 2005502A  
WGI Project No.: 20510530.XX

B. DRAINAGE DESIGN/PLANS & PERMITTING

	Scale	Basis of Estimate	No. of Units/Sheets	Manhours/ Unit/Sheet	Total Manhours	Comments
DRAINAGE ANALYSIS AND DESIGN						
1 Design of Storm Sewers	N/A	EA	16	4	64	Connect to existing storm drain system. Installation of new trunk line in place of existing drainage pipe along West side of SB Australian Ave and south side of EB Palm Beach Lakes Blvd. 4 existing inlets to be replaced along Australian, 4 existing inlets to be replaced along Palm Beach Lakes Blvd. + 4 additional inlet for each direction (16 Total)
2 Design of Stormwater Detention/Retention Facilities	N/A	EA	0.45	20	9	Design of swale along Australian, Palm Beach Lakes total distance = 2300' @ 20 hrs/mile.
3 Design of Special Drainage Systems/Features	N/A	LS	2	12	24	Design of French Drain systems for water quality.
4 Drainage Design Report/Documentation	N/A	LS	1	48	48	Report incl. spread, routing, correspondence, and all documents associated w/ final drainage documentation. Initial and Final Submittals.
5 Field Reviews	N/A	EA	1	8	8	1 field review x 2 people x 4 hrs.
DRAINAGE PLANS						
1 Drainage Maps	200	SHT	1	24	24	1 200 scale Drainage Map Sheet
2 Existing Drainage Data Sheet	N/A	SHT	1	2	2	Exist. Drainage data (from topographic survey)
3 Drainage Structure Sheets	N/A	EA	12	3	36	Drainage Structure X-Sections for 12 proposed structures.
4 Summary of Drainage Structures	N/A	SHT	1	8	8	
5 SWPPP	N/A	SHT	2	8	16	SWPPP and Erosion Control Plan Sheets.
PERMITTING (ENGINEERING-RELATED)						
1 SFWMD Permit Application & Coordination		LS	1	50	50	Includes all necessary coordination (meeting, correspondence, etc.) associated with all applications, responses to RFI's and other permitting efforts. Coordination w/ the City of WPB's stormwater master plan consultant.
2 SFWMD Dewatering Permit Plans		LS	1	16	16	Permit plans, application and coordination required to obtain required SFWMD Dewatering Permit.
DRAINAGE PLANS/DESIGN AND PERMITTING PHASE TOTAL					305	



Exhibit "A" – Page 9 of 15

Australian Ave and Palm Beach Lakes Blvd. Intersection Improvements  
Supplemental Agreement No. 6

Staff Hour Estimate

WANTMAN GROUP, INC.  
2035 VISTA PARKWAY  
WEST PALM BEACH, FL 33411  
(561) 687-2220

Date: February 1, 2016  
PBC Project No.: 2005502A  
WGI Project No.: 20510530.XX

C. SIGNING & MARKING PLANS

	Scale	Basis of Estimate	No. of Units/Sheets	Manhours/ Unit/Sheet	Total Manhours	Comments
SIGNING AND MARKING PLANS						
1 Key Sheet		SHT	1	2	2	
2 General Notes Sheet		SHT	1	4	4	Update standards and specification references
3 Tabulation of Quantities		SHT	5	6	30	Summarize/Quantify 5 S&PM plan sheets
4 Plan Sheets		SHT	5	12	60	5 plan sheets (See Roadway Plans)
5 Quantities		LS	1	16	16	12 hrs each x 2 submittals (96% and Final)
6 Cost Estimates		LS	0	0	0	Included under Roadway.
SIGNING AND MARKING PLANS TOTAL					112	

Exhibit "A" – Page 10 of 15

Australian Ave and Palm Beach Lakes Blvd. Intersection Improvements  
Supplemental Agreement No. 6

Staff Hour Estimate

WANTMAN GROUP, INC.  
2035 VISTA PARKWAY  
WEST PALM BEACH, FL 33411  
(561) 687-2220

Date: February 1, 2016  
PBC Project No.: 2005502A  
WGI Project No.: 20510530.XX

D UTILITY COORDINATION

	Scale	Basis of Estimate	No. of Units/Sheets	Manhours/ Unit/Sheet	Total Manhours	Comments
UTILITY COORDINATION						
1 Assist PBC with Utility Coordination		LS	1	8	8	Assist with distributions.
2 Incorporate Utility Mark-ups into plans		LS	1	16	16	Assume 8 Utility Co's @ 2 hrs = 16 hrs.
3 Develop Utility Conflict Matrix		LS	1	20	20	8 hrs for creation of matrix + 12 hrs for updates.
4 Utility Coordination Meeting		LS	2	8	16	2 meetings x 2 people x 4 hrs - Including minutes.
5 Follow-up Coordination		LS	1	20	20	Follow up coordination w/ impacted Utility Co's.
UTIL SERVICES TOTAL					80	

Exhibit "A" – Page 11 of 15

Australian Ave and Palm Beach Lakes Blvd. Intersection Improvements

Permit Expense Summary

WANTMAN GROUP, INC.  
2035 VISTA PARKWAY  
WEST PALM BEACH, FL 33411  
(561) 687-2220

Date: February 1, 2016  
PBC Project No.: 2005502A  
WGI Project No.: 20510530.XX

PERMITS	
AGENCY	PERMIT FEE
South Florida Water Management District (SFWMD) - Minor Modification	\$1,200.00
South Florida Water Management District (SFWMD) - Water Use	\$350.00
PERMIT FEES TOTAL	\$1,550.00

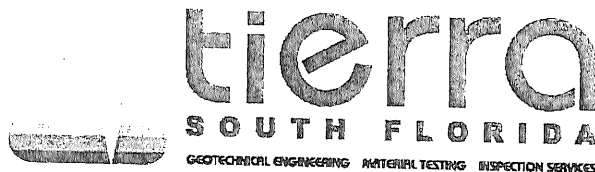


Exhibit "A" – Page 12 of 15

February 1, 2016  
November 2, 2015  
October 19, 2015  
September 08, 2015

TO: Wantman Group, Inc.  
2035 Vista Parkway, Suite 100  
West Palm Beach, FL 33411

Attention: Mr. Keegan Larson, P.E.

SUBJECT: Palm Beach Lakes Boulevard Roadway Improvements  
West Palm Beach, Florida  
TSF Proposal No. 1509-404\_Rev1

Dear Keegan:

As requested, **TIERRA SOUTH FLORIDA, INC. (TSF)** is pleased to submit this proposal for the above-referenced project. This proposal includes an outline of our proposed scope of work, an estimate of the total fees, and our anticipated schedule for completion of the work.

#### **PROPOSED SCOPE OF WORK**

All work performed by TSF will be in general accordance with PBC standards. We understand that Palm Beach Lakes Boulevard will be widened for 900 feet, the approximate limits are from Australian Ave to east of Carver Avenue. As requested, TSF will perform five (5) roadway borings to depths of 10 ft below grade, also two (2) Borehole Permeability Test will be performed following SFWMD guidelines.

Boring locations will be approximately located and noted in the field by our personnel by measuring distances with a tape from known reference points. Elevations at boring location can be interpreted from topographic plans if furnished by others. Prior to drilling at the project site, TSF will notify the local utility companies and request that underground utilities be marked. Our experience, however, is that the utility companies will not mark privately owned utilities. Our proposal assumes that private utility lines will be located in the field by others prior to mobilization of the drill rig. TSF will recommend a utility line locating service upon request. The boring will be drilled within fifteen (15) feet of edge of pavement and MOT will be not required.

Upon completion of the field exploration, laboratory testing will be performed on selected samples.

A geotechnical engineer will evaluate the results of all drilling and laboratory testing. A report will be issued that contains the exploration data, a discussion of the site and subsurface conditions, evaluation, and geotechnical recommendations for pavement design, and a discussion of some construction considerations.

#### **ESTIMATED FEES**

It is proposed that the fee for the performance of the services outlined above is determined on a unit price basis. The estimated fees are \$4,310.00

Our estimate covers the work needed to present our findings and recommendations in a formal report. Not included are reviews of drawings, preparation of construction specifications, special conferences and any other work requested after submittal of our report.

#### **SCHEDULE AND AUTHORIZATION**

TSF will proceed with the work after receipt of a signed copy of this proposal. With our present schedule, we can commence work within a few days of project approval (weather permitting and utility clearance). The fieldwork is expected to take about four (4) day to complete. The written report can be submitted about two weeks after completion of the field exploration, depending on the extent of the laboratory-testing program. Verbal preliminary recommendations can be made to appropriate parties prior to submittal of the written report.

We at TSF appreciate the opportunity to submit this proposal and look forward to working with you on this project. If you should have any questions concerning our proposal, please contact our office.

Respectfully submitted,

**TIERRA SOUTH FLORIDA, INC.**



Raj Krisnasamy, P.E.  
Principal Engineer

RK:JO

Attachments: 1. Fee Estimate

AUTHORIZED BY:	INVOICE TO:
Name:	Firm:
Title:	Name:
Date:	Address:

ROADWAY

Exhibit "A" – Page 15 of 15

TIERRA SOUTH FLORIDA, INC.

I.		Unit	# of Units		Unit Price		Total
	<b>FIELD INVESTIGATION</b>						
	Mobilization of Men and Equipment	Trip	1	\$	✓ 350.00	\$	✓ 350.00
	Truck-Mounted Equipment						
	Borehole Permeability Tests	Test	2	\$	✓ 275.00	\$	✓ 550.00
	Traffic Control	Day	0	\$	800.00	\$	0.00
	(2-man crew with safety equipments)						
	Auger Borings (Roadway)	L.F.	50	\$	✓ 9.00	\$	✓ 450.00
II.	<b>LABORATORY TESTING</b>						
	Visual Examination by Project Engineer	Hour	2	\$	✓ 115.00	\$	✓ 230.00
	Natural Moisture Content Tests	Test	2	\$	✓ 20.00	\$	✓ 40.00
	Grain-Size Analysis - Full Gradation	Test	2	\$	✓ 75.00	\$	✓ 150.00
	Grain-Size Analysis - Single Sieve	Test	2	\$	✓ 45.00	\$	✓ 90.00
	Organic Content Tests	Test	2	\$	✓ 50.00	\$	✓ 100.00
III.	<b>FIELD ENGINEERING AND TECHNICAL SERVICES</b>						
	Site Recon./Utility Coordination/Traffic Control						
	Sr. Engineering Technician	Hour	8	\$	✓ 65.00	\$	✓ 520.00
IIIA.	<b>ENGINEERING AND TECHNICAL SERVICES</b>						
	Principal Engineer	Hour	2	\$	✓ 145.00	\$	✓ 290.00
	Senior Geotechnical Engineer	Hour	4	\$	✓ 125.00	\$	✓ 500.00
	Project Engineer	Hour	8	\$	✓ 115.00	\$	✓ 920.00
	Draftperson	Hour	2	\$	✓ 60.00	\$	✓ 120.00
TOTAL FEE FOR GEOTECHNICAL SERVICES - ROADWAY						\$	✓ 4,310.00

2.45 multiplier



### CERTIFICATION STATEMENTS

Exhibit "B" – Page 1 of 2

Project: Australian Avenue and Palm Beach Lakes Boulevard Intersection Improvements  
Project No.: 2005502A

Consultant/Annual Consultant: Wantman Group, Inc.

### TRUTH-IN-NEGOTIATION STATEMENT

By entering into this Agreement, the **CONSULTANT/ANNUAL CONSULTANT** certifies that the wage rates and costs used to determine the lump sum fees contained in herein are accurate, complete and current as of the date of this Agreement.

The said lump sum fees shall be adjusted to exclude any significant sums should the **COUNTY** determine that the lump sum fees were increased due to inaccurate, incomplete or non-current wage rates or due to inaccurate representations of fees paid to outside consultants.

The **COUNTY** shall exercise its right under this "Certificate" within one year following final payment.

### PROHIBITION AGAINST CONTINGENT FEES STATEMENT

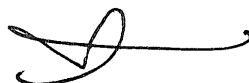
By entering into this Agreement the **CONSULTANT/ANNUAL CONSULTANT** warrants that they have not employed or retained any company or person other than a bonafide employee working solely for the **CONSULTANT/ANNUAL CONSULTANT** to solicit or secure this Agreement and that they have not paid or agreed to pay any person, company, corporation, individual or firm other than a bonafide employee working solely for the **CONSULTANT/ANNUAL CONSULTANT**, any fee, commission, percentage, gift or other consideration contingent upon or resulting from the award of making of this agreement.

### PUBLIC ENTITY CRIMES STATEMENT

As provided in F.S. 287.132-133, by entering this Agreement or performing any work in furtherance hereof, the **CONSULTANT/ANNUAL CONSULTANT** certifies that it, its affiliates, suppliers, sub-contractors and consultants who will perform hereunder, have not been placed on the convicted vendor list maintained by the State of Florida Department of Management Services within the 36 months immediately preceding the date hereof. This notice is required by F.S. 287.133 (3) (a).

### NON-DISCRIMINATION STATEMENT

The **CONSULTANT/ANNUAL CONSULTANT** warrants and represents that all of its employees are treated equally during employment without regard to race, color, religion, disability, sex, age, national origin, ancestry, marital status, familial status, sexual orientation, gender identity and expression, or genetic information.



David Wantman, P.E., President

**CONFLICT OF INTEREST DISCLOSURE FORM**

**Project:** Australian Avenue and Palm Beach Lakes Boulevard  
Intersection Improvements

**Exhibit "B" – Page 2 of 2**

**Project No.:** 2005502A

CONSULTANT/ANNUAL CONSULTANT represents that it presently has no interest, either direct or indirect, which would or could conflict in any manner with the performance of services for the County, except as follows:

\_\_\_\_\_  
\_\_\_\_\_  
(Attach additional sheets as needed.)

CONSULTANT/ANNUAL CONSULTANT further represents that no person having any interest shall be employed for said performance. By signing below, CONSULTANT/ANNUAL CONSULTANT certifies that the information contained herein is true and correct and constitutes all current potential conflicts of interest which may influence or appear to influence CONSULTANT'S/ANNUAL CONSULTANT'S judgment or quality of services being provided to the County.

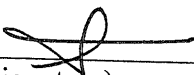
CONSULTANT/ANNUAL CONSULTANT shall promptly notify the COUNTY in writing by certified mail of all potential conflicts of interest that may arise in the future through any prospective business association, interest or other circumstance which may influence or appear to influence CONSULTANT'S/ANNUAL CONSULTANT'S judgment or quality of services being provided to the County. Such written notification shall identify the prospective business association, interest or circumstance, the nature of work that CONSULTANT/ANNUAL CONSULTANT may undertake and request an opinion of the COUNTY as to whether the association, interest or circumstance would, in the opinion of the COUNTY, constitute an unacceptable conflict of interest if entered into by the CONSULTANT/ANNUAL CONSULTANT.

If, in the sole opinion of the COUNTY, the prospective business association, interest or circumstance of CONSULTANT/ANNUAL CONSULTANT would constitute an unacceptable conflict of interest to the COUNTY, the COUNTY shall so state in the notification and the CONSULTANT/ANNUAL CONSULTANT shall not enter into said association, interest or circumstance.

**THIS DISCLOSURE** is submitted by David Wantman, P.E., as  
(Name of Individual)

President, of Wantman Group, Inc.  
(Title/Position) (Firm Name of CONSULTANT/ANNUAL CONSULTANT)

who hereby certifies that the information stated above is true and correct. Further, it is hereby acknowledged that any misrepresentation by the CONSULTANT/ANNUAL CONSULTANT on this Disclosure is considered an unethical business practice and is grounds for sanctions against future County business with the CONSULTANT/ANNUAL CONSULTANT.

  
(Signature)

2/5/14  
(Date)

PARTICIPATION FOR MWBE/SBE CONSULTANTS

Supplement Number 6      Date

**Project Name:** Australian Avenue from Banyan Blvd. to 45th Street

**Prime Vendor:** Wantman Group, Inc.

**Telephone:** (561) 687-2220

**Contact:** David Wantman, P.E., President

**Project Number:** 2005502

**Resolution Number**

**Resolution Date**

**Department:** Engineering & Public Works

Total Supplement Amount      \$123,523.84

Minority Sub-Consultant	Type of Work Performed	Contract Dollar Amount for Sub-Consultant					
		Black	Hispanic	Women	Other	White Male	Pct
Tierra South Florida, Inc. 2765 VISTA PKY STE 10 WEST PALM BEACH, FL 33411 (561) 687-8536	MWBE	0.00	4,310.00	0.00	0.00		3.5%
	SBE	0.00	0.00	0.00	0.00	0.00	0.0%
	Total MWBE	0.00	4,310.00	0.00	0.00		3.5%
	Percentage	0.00%	3.49%	0.00%	0.00%		
	Total SBE	0.00	0.00	0.00	0.00	0.00	0.0%
	Percentage	0.00%	0.00%	0.00%	0.00%	0.00%	

SCHEDULE 1

LIST OF PROPOSED SBE-M/WBE PRIME AND/OR SUBCONTRACTOR PARTICIPATION

PROJECT NAME OR BID NAME: Australian Avenue and Palm Beach Lakes Boulevard Intersection PROJECT NO. OR BID NO.: 2005502A  
NAME OF PRIME BIDDER: Wantman Group, Inc. ADDRESS: 2035 Vista Parkway West Palm Beach, FL 33411  
CONTACT PERSON: David Wantman PHONE NO.: 561-687-2220 FAX NO.: 561-687-1110  
BID OPENING DATE: USER DEPARTMENT: Engineering & Public Works

THIS DOCUMENT IS TO BE COMPLETED BY THE PRIME CONTRACTOR AND SUBMITTED WITH BID PACKET. PLEASE LIST THE NAME, CONTACT INFORMATION AND DOLLAR AMOUNT OR PERCENTAGE OF WORK TO BE COMPLETED BY ALL SBE -M/WBE SUBCONTRACTORS ON THIS PROJECT. IF THE PRIME IS AN SBE-M/WBE, PLEASE ALSO LIST THE NAME, CONTACT INFORMATION AND DOLLAR AMOUNT OR PERCENTAGE OF WORK TO BE COMPLETED BY THE PRIME ON THIS PROJECT.

(Check one or both Categories)			DOLLAR AMOUNT OR PERCENTAGE OF WORK				
Name, Address and Phone Number	M/WBE	SBE	Black	Hispanic	Women	Caucasian	Other (Please Specify)
	Minority Business	Small Business					
1. Tierra SF 561-687-8536 2765 Vista Parkway, Suite 10 West Palm Beach, FL 33411	<input checked="" type="checkbox"/>	<input type="checkbox"/>		3.49			
2.	<input type="checkbox"/>	<input type="checkbox"/>					
3.	<input type="checkbox"/>	<input type="checkbox"/>					
4.	<input type="checkbox"/>	<input type="checkbox"/>					
5.	<input type="checkbox"/>	<input type="checkbox"/>					
(Please use additional sheets if necessary)							
Total				3.49			
Total Bid Price \$ 123,523.84			Total SBE-M/WBE Participation Dollar Amount or Percentage of Work 3.49				

Exhibit "C" - Page 2 of 2

Note: 1. The amount listed on this form for a subcontractor must be supported by price or percentage listed on the signed Schedule 2 or signed proposal in order to be counted toward goal attainment.  
2. Firms may be certified by Palm Beach County as an SBE and/or and M/WBE. If firms are certified as both an SBE and N/WBE, please indicate the dollar amount or percentage under the appropriate category.  
3. M/WBE information is being collected for tracking purposes only.

F:\ROADWAY\CCNA\2005\2005502\PROJECT\Supp6\ComplianceSchedule1.docx Revised 03/15/2011

OSBA SCHEDULE 2  
LETTER OF INTENT TO PERFORM AS AN SBE-M/WBE SUBCONTRACTOR

Exhibit "D"

This document must be completed by the SBE-M/WBE Subcontractor and submitted with bid packet. Specify in detail, the particular work items to be performed and the dollar amount and/or percentage for each work item. SBE credit will only be given for items which the SBE-M/WBE Subcontractor is SBE certified to perform. Failure to properly complete Schedule 2 may result in your SBE participation not being counted.

PROJECT NUMBER: 2005502A PROJECT NAME: Australian Avenue and Palm Beach Lakes Boulevard Intersection Improvement

TO: Wantman Group, Inc.  
(Name of Prime Bidder)

The undersigned is certified by Palm Beach County as a - (check one or more, as applicable):

Small Business Enterprise \_\_\_\_\_ Minority Business Enterprise X

Black \_\_\_\_\_ Hispanic X Women \_\_\_\_\_ Caucasian \_\_\_\_\_ Other (Please Specify) \_\_\_\_\_

Date of Palm Beach County Certification: \_\_\_\_\_

The undersigned is prepared to perform the following described work in connection with the above project. Additional Sheets May Be Used As Necessary

Line Item/

Lot No.	Item Description	Qty/Units	Unit Price	Total Price/ Percentage
	Field Investigation			\$1350.00
	Laboratory Testing			\$610.00
	Field Engineering and Technical Services			\$520.00
	Engineering and Technical Services			\$1830.00

at the following price or percentage

3.49%  
(Subcontractor's quote) \$4310.00

and will enter into a formal agreement for work with you conditioned upon your execution of a contract with Palm Beach County.

If undersigned intends to subcontract any portion of this job to a certified SBE or a non-SBE subcontractor, please list the name of the subcontractor and the amount below.

Price and/or Percentage \_\_\_\_\_  
(Name of Subcontractor)

The Prime affirms that it will monitor the SBE's listed to ensure the SBE's perform the work with its own forces. The undersigned subcontractor affirms that it has the resources necessary to perform the work listed without subcontracting to non-certified SBE or any other certified SBE subcontractors except as noted above.

The undersigned subcontractor understands that the provision of this form to Prime Bidder does not prevent Subcontractor from providing quotations to other bidders.

Wantman Group, Inc.  
Print name of Prime Contractor

By: \_\_\_\_\_  
Signature

David S. Wantman, President  
Print name/title of person executing on behalf  
Prime Contractor

Tierra South Florida, Inc.  
Print name of SBE-M/WBE Subcontractor

By: \_\_\_\_\_  
Signature

Raj Krishnasamy, P.E. / President  
Print name/title of person executing on behalf  
of SBE-M/WBE Subcontractor

Client#: 25411

WANTGROU

ACORD™

CERTIFICATE OF LIABILITY INSURANCE

DATE (MM/DD/YYYY)  
10/21/2015

THIS CERTIFICATE IS ISSUED AS A MATTER OF INFORMATION ONLY AND CONFERS NO RIGHTS UPON THE CERTIFICATE HOLDER. THIS CERTIFICATE DOES NOT AFFIRMATIVELY OR NEGATIVELY AMEND, EXTEND OR ALTER THE COVERAGE AFFORDED BY THE POLICIES BELOW. THIS CERTIFICATE OF INSURANCE DOES NOT CONSTITUTE A CONTRACT BETWEEN THE ISSUING INSURER(S), AUTHORIZED REPRESENTATIVE OR PRODUCER, AND THE CERTIFICATE HOLDER.

IMPORTANT: If the certificate holder is an ADDITIONAL INSURED, the policy(ies) must be endorsed. If SUBROGATION IS WAIVED, subject to the terms and conditions of the policy, certain policies may require an endorsement. A statement on this certificate does not confer rights to the certificate holder in lieu of such endorsement(s).

PRODUCER Greyling Ins. Brokerage/EPIC 3780 Mansell Road, Suite 370 Alpharetta, GA 30022	CONTACT NAME: Carly Underwood PHONE (A/C, No, Ext): 770.552.4225 FAX (A/C, No): 866.550.4082 E-MAIL ADDRESS: carly.underwood@greyling.com
INSURED Wantman Group, Inc. 2035 Vista Parkway Suite 100 West Palm Beach, FL 33411	INSURER(S) AFFORDING COVERAGE INSURER A: Charter Oak Fire Insurance Co. 25615 INSURER B: Travelers Indemnity Company 25658 INSURER C: Travelers Casualty & Surety Co 31194 INSURER D: Liberty Insurance Underwriters 19917 INSURER E: Travelers PropCas Co of America 25674 INSURER F:

COVERAGES

CERTIFICATE NUMBER: 15-16

REVISION NUMBER:

THIS IS TO CERTIFY THAT THE POLICIES OF INSURANCE LISTED BELOW HAVE BEEN ISSUED TO THE INSURED NAMED ABOVE FOR THE POLICY PERIOD INDICATED. NOTWITHSTANDING ANY REQUIREMENT, TERM OR CONDITION OF ANY CONTRACT OR OTHER DOCUMENT WITH RESPECT TO WHICH THIS CERTIFICATE MAY BE ISSUED OR MAY PERTAIN, THE INSURANCE AFFORDED BY THE POLICIES DESCRIBED HEREIN IS SUBJECT TO ALL THE TERMS, EXCLUSIONS AND CONDITIONS OF SUCH POLICIES. LIMITS SHOWN MAY HAVE BEEN REDUCED BY PAID CLAIMS.

INSR LTR	TYPE OF INSURANCE	ADD'L SUBR INSR WVD	POLICY NUMBER	POLICY EFF (MM/DD/YYYY)	POLICY EXP (MM/DD/YYYY)	LIMITS
A	GENERAL LIABILITY <input checked="" type="checkbox"/> COMMERCIAL GENERAL LIABILITY <input type="checkbox"/> CLAIMS-MADE <input checked="" type="checkbox"/> OCCUR GEN'L AGGREGATE LIMIT APPLIES PER: <input type="checkbox"/> POLICY <input checked="" type="checkbox"/> PROJECT <input type="checkbox"/> LOC		6601C623193COF15	09/18/2015	09/18/2016	EACH OCCURRENCE \$1,000,000 DAMAGE TO RENTED PREMISES (Ea occurrence) \$1,000,000 MED EXP (Any one person) \$10,000 PERSONAL & ADV INJURY \$1,000,000 GENERAL AGGREGATE \$2,000,000 PRODUCTS - COMP/OP AGG \$2,000,000 \$
E	AUTOMOBILE LIABILITY <input checked="" type="checkbox"/> ANY AUTO ALL OWNED AUTOS <input type="checkbox"/> SCHEDULED AUTOS HIRED AUTOS <input type="checkbox"/> NON-OWNED AUTOS		BA1C62380215GRP	09/18/2015	09/18/2016	COMBINED SINGLE LIMIT (Ea accident) \$1,000,000 BODILY INJURY (Per person) \$ BODILY INJURY (Per accident) \$ PROPERTY DAMAGE (Per accident) \$ \$
B	<input checked="" type="checkbox"/> UMBRELLA LIAB <input checked="" type="checkbox"/> OCCUR EXCESS LIAB <input type="checkbox"/> CLAIMS-MADE DED <input checked="" type="checkbox"/> RETENTION \$10,000		XSMCUP3947T960-IND15	09/18/2015	09/18/2016	EACH OCCURRENCE \$5,000,000 AGGREGATE \$5,000,000 \$
C	WORKERS COMPENSATION AND EMPLOYERS' LIABILITY ANY PROPRIETOR/PARTNER/EXECUTIVE OFFICER/MEMBER EXCLUDED? (Mandatory in NH) If yes, describe under DESCRIPTION OF OPERATIONS below	Y/N N/A	XAUB3947T94715	09/18/2015	09/18/2016	<input checked="" type="checkbox"/> WC STATUTORY LIMITS <input type="checkbox"/> OTHER E.L. EACH ACCIDENT \$1,000,000 E.L. DISEASE - EA EMPLOYEE \$1,000,000 E.L. DISEASE - POLICY LIMIT \$1,000,000
D	Professional Liability		AEE2004070115	09/18/2015	09/18/2016	Per Claim \$2,000,000 Aggregate \$2,000,000

DESCRIPTION OF OPERATIONS / LOCATIONS / VEHICLES (Attach ACORD 101, Additional Remarks Schedule, if more space is required)

Re: For All Projects with Palm Beach County. Palm Beach County, Board of County Commissioners, a Political Subdivision of the State of Florida, its Officers, Employees & Agents are named as Additional Insureds on the above referenced liability policies with the exception of workers compensation & professional liability where required by written contract. Waiver of Subrogation is applicable where required by written contract & allowed by law. Retroactive Date 7/1/1991. Professional Liability Deductible \$50,000.

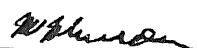
CERTIFICATE HOLDER

CANCELLATION

Palm Beach County  
c/o Insurance Tracking Services, Inc. (ITS)  
P.O. Bo 20270  
Long Beach, CA 90801

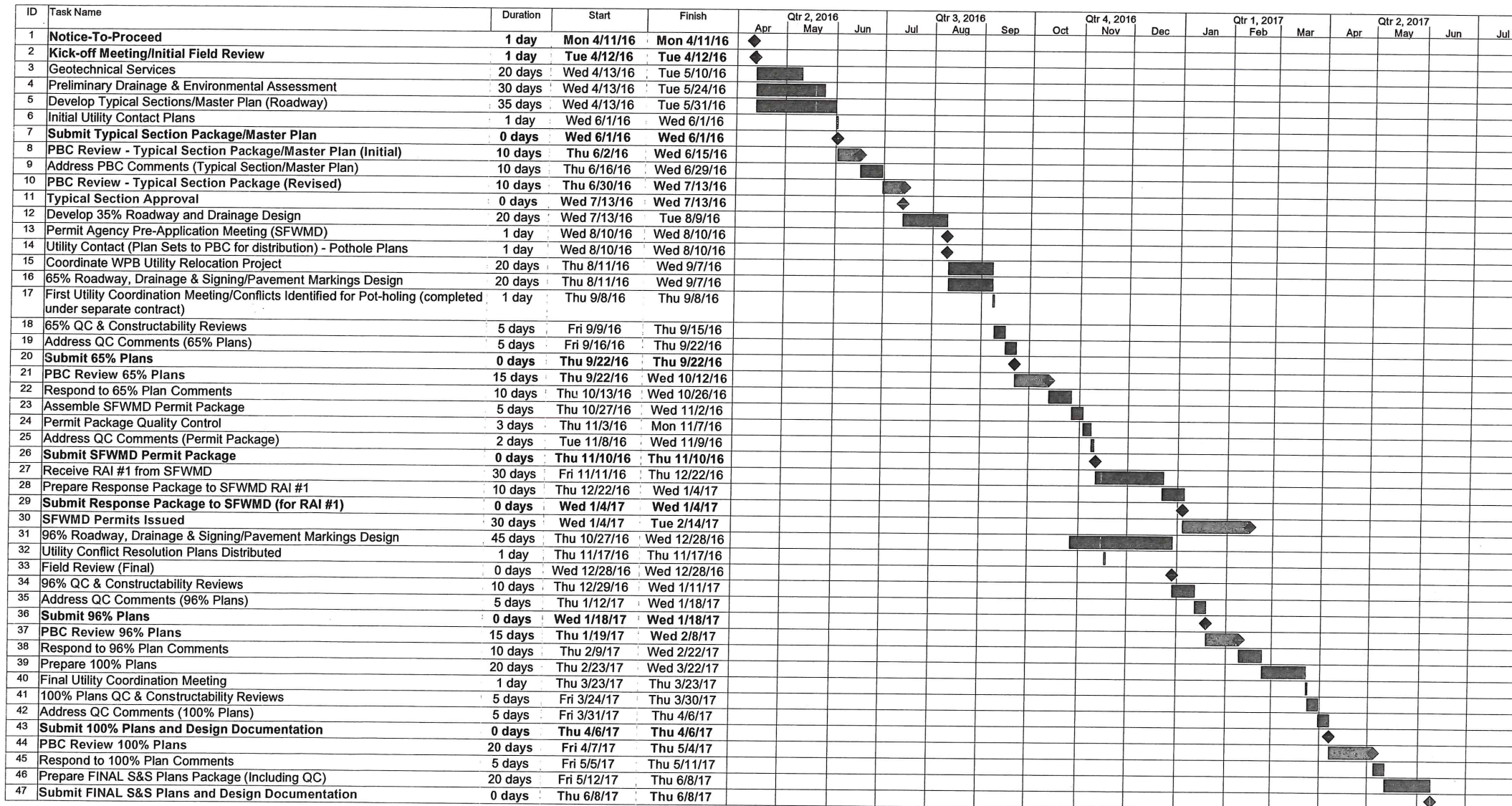
SHOULD ANY OF THE ABOVE DESCRIBED POLICIES BE CANCELLED BEFORE THE EXPIRATION DATE THEREOF, NOTICE WILL BE DELIVERED IN ACCORDANCE WITH THE POLICY PROVISIONS.

AUTHORIZED REPRESENTATIVE



**AUSTRALIAN AVENUE / PALM BEACH LAKES BOULEVARD  
INTERSECTION IMPROVEMENTS  
PBC PROJ. NO. 2005502**

Wed 2/10/16



Attachment 3