

II. FISCAL IMPACT ANALYSIS

A. Five Year Summary of Fiscal Impact:

Fiscal Years	2017	2018	2019	2020	2021
Capital Expenditures	\$ -0-	-0-	-0-	-0-	-0-
Operating Costs	-0-	-0-	-0-	-0-	-0-
External Revenues	-0-	-0-	-0-	-0-	-0-
Program Income (County)	-0-	-0-	-0-	-0-	-0-
In-Kind Match (County)	-0-	-0-	-0-	-0-	-0-
NET FISCAL IMPACT	\$ -0-	-0-	-0-	-0-	-0-
# ADDITIONAL FTE POSITIONS (Cumulative)					

Is Item Included in Current Budget? Yes No

Budget Acct No.: Fund__ Dept.__ Unit__ Object
Program

B. Recommended Sources of Funds/Summary of Fiscal Impact:

This item has no additional fiscal impact. The County has been maintaining this section of roadway and will continue to do so.

C. Departmental Fiscal Review: Alii Kovalainen

III. REVIEW COMMENTS

A. OFMB Fiscal and/or Contract Dev. and Control Comments:

John H. W.
OFMB, ET 2/8

Levy Miller for David Grodzitz
Contract Dev. and Control
2/9/17 JW

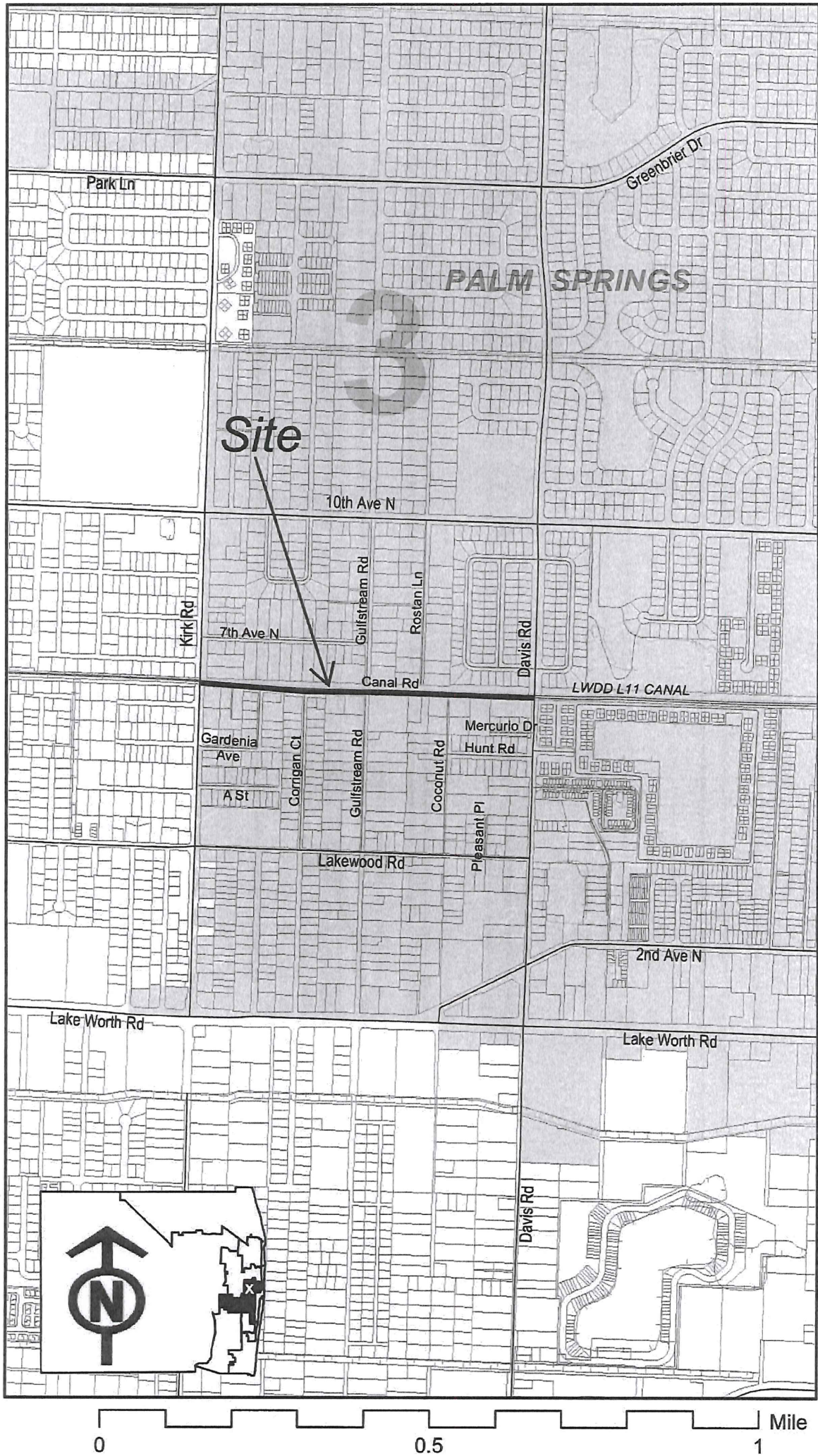
B. Approved as to Form and Legal Sufficiency:

Paul F. J. - 2/9/17
Assistant County Attorney

C. Other Department Review:

Department Director

This summary is not to be used as a basis for payment.



Location Map

RESOLUTION NO. R-2017_____.

RESOLUTION OF THE BOARD OF COUNTY COMMISSIONERS OF PALM BEACH COUNTY, FLORIDA, TO APPROVE THE RECORDATION AND FILING OF A MAINTENANCE MAP FOR CANAL ROAD (ALSO KNOWN AS CANAL 11 ROAD) FROM KIRK ROAD TO DAVIS ROAD, IN SECTION 19, TOWNSHIP 44 SOUTH, RANGE 43 EAST, WITH THE CLERK AND COMPTROLLER OF PALM BEACH COUNTY, FLORIDA

WHEREAS, the Canal Road from Kirk Road to Davis Road maintenance map has been submitted to the Board of County Commissioners (BCC) to approve its recordation and filing; and

WHEREAS, the Road and Bridge Division Director has certified that Palm Beach County (County) has maintained this area of Canal Road for more than seven years, as required by Florida Statute 95.361; and

WHEREAS, Florida Statute 95.361 states that when a road constructed by the County has been maintained or repaired continuously and uninterruptedly for seven years by the County, the road shall be deemed to be dedicated to the public to the extent in width that has been actually maintained. The dedication shall vest all right, title, easement and appurtenances in and to the road to the County; and

WHEREAS, the maintenance map, shall be filed with the Clerk and Comptroller (Clerk) of the County. The maintenance map shall recite on it that the road is vested to the County and shall be duly certified by the Clerk and the Mayor of the BCC. Said filing shall be prima facie evidence of ownership by the County.

NOW, THEREFORE, BE IT RESOLVED BY THE BOARD OF COUNTY COMMISSIONERS OF PALM BEACH COUNTY, FLORIDA, that:

1. The foregoing recitals are hereby reaffirmed and ratified.
2. The Mayor of the BCC and the County Engineer are hereby authorized to sign the maintenance map and the Clerk is authorized to sign same.

RESOLUTION NO. R-2017_____.

The foregoing Resolution was offered by Commissioner _____ who moved its adoption. The motion was seconded by Commissioner _____ and upon being put to a vote, the vote was as follows:

Commissioner Paulette Burdick, Mayor	-
Commissioner Melissa McKinlay, Vice Mayor	-
Commissioner Hal R. Valeche	-
Commissioner Dave Kerner	-
Commissioner Steven L. Abrams	-
Commissioner Mary Lou Berger	-
Commissioner Mack Bernard	-

The Mayor thereupon declared the Resolution duly passed and adopted this _____ day of _____, 2017.

SHARON R. BOCK,
CLERK AND COMPTROLLER

APPROVED AS TO FORM AND
LEGAL SUFFICIENCY:

By: _____
Deputy Clerk

By: _____
County Attorney

RESOLUTION NO. R-2017_____.

RESOLUTION OF THE BOARD OF COUNTY COMMISSIONERS OF PALM BEACH COUNTY, FLORIDA, UPON RECORDATION OF THE MAINTENANCE MAP TRANSFERRING JURISDICTIONAL CONTROL, MAINTENANCE RESPONSIBILITY, AND OWNERSHIP OF ANY AND ALL COUNTY RIGHT-OF-WAY FOR CANAL ROAD (ALSO KNOWN AS CANAL 11 ROAD) FROM KIRK ROAD TO DAVIS ROAD, IN SECTION 19, TOWNSHIP 44 SOUTH, RANGE 43 EAST, TO THE VILLAGE OF PALM SPRINGS.

WHEREAS, Palm Beach County (County) intends to file a maintenance map for Canal Road establishing jurisdictional control, maintenance responsibility, and ownership for Canal Road, from Kirk Road to Davis Road; and,

WHEREAS, said Canal Road is wholly within the Village of Palm Springs (Village); and,

WHEREAS, the Village has requested that the County transfer the jurisdictional control, maintenance responsibility, and ownership of any and all County right-of-way for Canal Road; and,

WHEREAS, Staff has reviewed the transfer request and recommends approval.

NOW THEREFORE, BE IT RESOLVED BY THE BOARD OF COUNTY COMMISSIONERS (BCC) OF PALM BEACH COUNTY, FLORIDA THAT:

1. The BCC adopts and ratifies those matters set forth in the foregoing recitals.
2. Upon recordation of the maintenance map, the BCC does hereby transfer jurisdictional control, maintenance responsibility, and ownership of any and all right-of-way for Canal Road, from Kirk Road to Davis Road to the Village.

The foregoing Resolution was offered by Commissioner _____, who moved its adoption. The motion was seconded by Commissioner _____, and upon being put to a vote, the vote was as follows:

Commissioner Paulette Burdick, Mayor	-
Commissioner Melissa McKinlay, Vice Mayor	-
Commissioner Hal R. Valeche	-
Commissioner Dave Kerner	-
Commissioner Steven L. Abrams	-
Commissioner Mary Lou Berger	-
Commissioner Mack Bernard	-

The Mayor thereupon declared the Resolution duly passed and adopted this _____ day of _____, 2017.

SHARON R. BOCK,
CLERK AND COMPTROLLER

APPROVED AS TO FORM AND
LEGAL SUFFICIENCY:

By: _____
Deputy Clerk

By: _____
County Attorney

COUNTY OF PALM BEACH STATE OF FLORIDA

BOARD OF COUNTY COMMISSIONERS

PROJECT NO. 2015005

CANAL ROAD FROM KIRK ROAD TO DAVIS ROAD MAINTENANCE MAP - SPECIFIC PURPOSE SURVEY

HAL R. VALECHE
DISTRICT 1

PAULETTE BURDICK
DISTRICT 2

STEVEN L. ABRAMS
DISTRICT 4

MELISSA MCKINLAY
DISTRICT 6

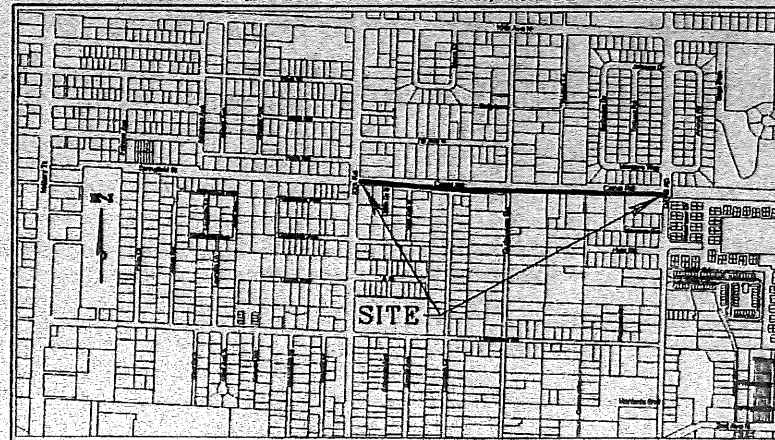
DAVE KERNER
DISTRICT 3

MARY LOU BERGER
DISTRICT 5

MACK BERNARD
DISTRICT 7



SECTION 19, TOWNSHIP 44 SOUTH, RANGE 43 EAST



LOCATION MAP
(N.T.S.)

CANAL ROAD FROM KIRK ROAD TO DAVIS ROAD DESCRIPTION OF AREA TO BE CLAIMED BY MAINTENANCE

A PARCEL OF LAND FOR ROAD RIGHT-OF-WAY PURPOSES SAID PARCEL BEING A PORTION OF THE
LARGE NORTH QUARTER SECTION 19, TOWNSHIP 44 SOUTH, RANGE 43 EAST, INCLUSIVE OF TRACTS 7, 8, 9, 10, 11, 12, 13, 14, 15, 16, 17, 18, 19, 20, 21, 22, 23, 24, 25, 26, 27, 28, 29, 30, 31, 32, 33, 34, 35, 36, 37, 38, 39, 40, 41, 42, 43, 44, 45, 46, 47, 48, 49, 50, 51, 52, 53, 54, 55, 56, 57, 58, 59, 60, 61, 62, 63, 64, 65, 66, 67, 68, 69, 70, 71, 72, 73, 74, 75, 76, 77, 78, 79, 80, 81, 82, 83, 84, 85, 86, 87, 88, 89, 90, 91, 92, 93, 94, 95, 96, 97, 98, 99, 100, 101, 102, 103, 104, 105, 106, 107, 108, 109, 110, 111, 112, 113, 114, 115, 116, 117, 118, 119, 120, 121, 122, 123, 124, 125, 126, 127, 128, 129, 130, 131, 132, 133, 134, 135, 136, 137, 138, 139, 140, 141, 142, 143, 144, 145, 146, 147, 148, 149, 150, 151, 152, 153, 154, 155, 156, 157, 158, 159, 160, 161, 162, 163, 164, 165, 166, 167, 168, 169, 170, 171, 172, 173, 174, 175, 176, 177, 178, 179, 180, 181, 182, 183, 184, 185, 186, 187, 188, 189, 190, 191, 192, 193, 194, 195, 196, 197, 198, 199, 200, 201, 202, 203, 204, 205, 206, 207, 208, 209, 210, 211, 212, 213, 214, 215, 216, 217, 218, 219, 220, 221, 222, 223, 224, 225, 226, 227, 228, 229, 230, 231, 232, 233, 234, 235, 236, 237, 238, 239, 240, 241, 242, 243, 244, 245, 246, 247, 248, 249, 250, 251, 252, 253, 254, 255, 256, 257, 258, 259, 260, 261, 262, 263, 264, 265, 266, 267, 268, 269, 270, 271, 272, 273, 274, 275, 276, 277, 278, 279, 280, 281, 282, 283, 284, 285, 286, 287, 288, 289, 290, 291, 292, 293, 294, 295, 296, 297, 298, 299, 300, 301, 302, 303, 304, 305, 306, 307, 308, 309, 310, 311, 312, 313, 314, 315, 316, 317, 318, 319, 320, 321, 322, 323, 324, 325, 326, 327, 328, 329, 330, 331, 332, 333, 334, 335, 336, 337, 338, 339, 340, 341, 342, 343, 344, 345, 346, 347, 348, 349, 350, 351, 352, 353, 354, 355, 356, 357, 358, 359, 360, 361, 362, 363, 364, 365, 366, 367, 368, 369, 370, 371, 372, 373, 374, 375, 376, 377, 378, 379, 380, 381, 382, 383, 384, 385, 386, 387, 388, 389, 390, 391, 392, 393, 394, 395, 396, 397, 398, 399, 400, 401, 402, 403, 404, 405, 406, 407, 408, 409, 410, 411, 412, 413, 414, 415, 416, 417, 418, 419, 420, 421, 422, 423, 424, 425, 426, 427, 428, 429, 430, 431, 432, 433, 434, 435, 436, 437, 438, 439, 440, 441, 442, 443, 444, 445, 446, 447, 448, 449, 450, 451, 452, 453, 454, 455, 456, 457, 458, 459, 460, 461, 462, 463, 464, 465, 466, 467, 468, 469, 470, 471, 472, 473, 474, 475, 476, 477, 478, 479, 480, 481, 482, 483, 484, 485, 486, 487, 488, 489, 490, 491, 492, 493, 494, 495, 496, 497, 498, 499, 500, 501, 502, 503, 504, 505, 506, 507, 508, 509, 510, 511, 512, 513, 514, 515, 516, 517, 518, 519, 520, 521, 522, 523, 524, 525, 526, 527, 528, 529, 530, 531, 532, 533, 534, 535, 536, 537, 538, 539, 540, 541, 542, 543, 544, 545, 546, 547, 548, 549, 550, 551, 552, 553, 554, 555, 556, 557, 558, 559, 560, 561, 562, 563, 564, 565, 566, 567, 568, 569, 570, 571, 572, 573, 574, 575, 576, 577, 578, 579, 580, 581, 582, 583, 584, 585, 586, 587, 588, 589, 590, 591, 592, 593, 594, 595, 596, 597, 598, 599, 600, 601, 602, 603, 604, 605, 606, 607, 608, 609, 610, 611, 612, 613, 614, 615, 616, 617, 618, 619, 620, 621, 622, 623, 624, 625, 626, 627, 628, 629, 630, 631, 632, 633, 634, 635, 636, 637, 638, 639, 640, 641, 642, 643, 644, 645, 646, 647, 648, 649, 650, 651, 652, 653, 654, 655, 656, 657, 658, 659, 660, 661, 662, 663, 664, 665, 666, 667, 668, 669, 670, 671, 672, 673, 674, 675, 676, 677, 678, 679, 680, 681, 682, 683, 684, 685, 686, 687, 688, 689, 690, 691, 692, 693, 694, 695, 696, 697, 698, 699, 700, 701, 702, 703, 704, 705, 706, 707, 708, 709, 710, 711, 712, 713, 714, 715, 716, 717, 718, 719, 720, 721, 722, 723, 724, 725, 726, 727, 728, 729, 730, 731, 732, 733, 734, 735, 736, 737, 738, 739, 740, 741, 742, 743, 744, 745, 746, 747, 748, 749, 750, 751, 752, 753, 754, 755, 756, 757, 758, 759, 760, 761, 762, 763, 764, 765, 766, 767, 768, 769, 770, 771, 772, 773, 774, 775, 776, 777, 778, 779, 780, 781, 782, 783, 784, 785, 786, 787, 788, 789, 790, 791, 792, 793, 794, 795, 796, 797, 798, 799, 800, 801, 802, 803, 804, 805, 806, 807, 808, 809, 810, 811, 812, 813, 814, 815, 816, 817, 818, 819, 820, 821, 822, 823, 824, 825, 826, 827, 828, 829, 830, 831, 832, 833, 834, 835, 836, 837, 838, 839, 840, 841, 842, 843, 844, 845, 846, 847, 848, 849, 850, 851, 852, 853, 854, 855, 856, 857, 858, 859, 860, 861, 862, 863, 864, 865, 866, 867, 868, 869, 870, 871, 872, 873, 874, 875, 876, 877, 878, 879, 880, 881, 882, 883, 884, 885, 886, 887, 888, 889, 890, 891, 892, 893, 894, 895, 896, 897, 898, 899, 900, 901, 902, 903, 904, 905, 906, 907, 908, 909, 910, 911, 912, 913, 914, 915, 916, 917, 918, 919, 920, 921, 922, 923, 924, 925, 926, 927, 928, 929, 930, 931, 932, 933, 934, 935, 936, 937, 938, 939, 940, 941, 942, 943, 944, 945, 946, 947, 948, 949, 950, 951, 952, 953, 954, 955, 956, 957, 958, 959, 960, 961, 962, 963, 964, 965, 966, 967, 968, 969, 970, 971, 972, 973, 974, 975, 976, 977, 978, 979, 980, 981, 982, 983, 984, 985, 986, 987, 988, 989, 990, 991, 992, 993, 994, 995, 996, 997, 998, 999, 1000.

COMMENCE AT THE WEST ONE-QUARTER CORNER OF SAID SECTION 19; THENCE SOUTH 88°09'38" EAST
ALONG THE EAST-WEST QUARTER SECTION LINE OF SAID SECTION 19, A DISTANCE OF 33.00 FEET
TO A POINT ON THE EASTERN RIGHT-OF-WAY LINE OF KIRK ROAD AS SHOWN ON SAID LAKWOOD
GARRENS PLAT; THENCE SOUTH 84°12'14" WEST ALONG SAID EASTERN RIGHT-OF-WAY LINE,
A DISTANCE OF 23.92 FEET TO THE POINT OF BEGINNING OF THE FOLLOWING DESCRIBED PARCEL:
THENCE SOUTH 74°01'35" EAST, DEPARTING SAID EASTERN RIGHT-OF-WAY LINE, A DISTANCE
OF 3.78 FEET; THENCE SOUTH 89°21'19" EAST, A DISTANCE OF 300.87 FEET; THENCE SOUTH
84°30'23" EAST, A DISTANCE OF 115.88 FEET; THENCE SOUTH 84°12'14" WEST, A DISTANCE
OF 46.77 FEET; THENCE SOUTH 89°47'10" EAST, A DISTANCE OF 250.21 FEET; THENCE SOUTH
84°16'00" WEST, A DISTANCE OF 74.43 FEET; THENCE SOUTH 88°23'48" EAST, A DISTANCE
OF 24.28 FEET; THENCE SOUTH 88°09'38" EAST, A DISTANCE OF 140.90 FEET; THENCE SOUTH
88°57'19" EAST, A DISTANCE OF 144.86 FEET; THENCE SOUTH 88°23'11" EAST, A DISTANCE
OF 145.15 FEET; THENCE SOUTH 88°19'15" EAST, A DISTANCE OF 68.88 FEET; THENCE SOUTH
88°57'19" EAST, A DISTANCE OF 72.01 FEET; THENCE SOUTH 88°03'57" EAST, A DISTANCE
OF 82.80 FEET; THENCE SOUTH 88°09'10" EAST, A DISTANCE OF 100.74 FEET; THENCE SOUTH
81°30'57" EAST, A DISTANCE OF 64.84 FEET; THENCE SOUTH 84°04'12" EAST, A DISTANCE
OF 87.43 FEET; THENCE SOUTH 89°04'33" EAST, A DISTANCE OF 12.33 FEET; THENCE SOUTH
81°12'41" EAST, A DISTANCE OF 108.14 FEET; THENCE SOUTH 89°17'16" EAST, A DISTANCE
OF 112.11 FEET; THENCE SOUTH 87°30'16" EAST, A DISTANCE OF 80.44 FEET; THENCE SOUTH
81°12'41" EAST, A DISTANCE OF 62.78 FEET; THENCE SOUTH 89°17'16" EAST, A DISTANCE
OF 39.31 FEET; THENCE SOUTH 89°47'34" EAST, A DISTANCE OF 47.01 FEET; THENCE SOUTH
84°16'00" WEST, A DISTANCE OF 83.92 FEET; THENCE SOUTH 87°51'49" EAST, A DISTANCE
OF 83.95 FEET; THENCE SOUTH 88°19'15" EAST, A DISTANCE OF 15.61 FEET; THENCE SOUTH
84°56'24" EAST, A DISTANCE OF 15.61 FEET TO A POINT ON THE EAST LINE OF THE SOUTHWEST
ONE-QUARTER OF SAID SECTION 19; THENCE SOUTH 88°19'15" EAST, A DISTANCE OF 18.18 FEET;
THENCE NORTH 82°11'27" WEST, A DISTANCE OF 31.50 FEET; THENCE NORTH 88°11'01" WEST,
A DISTANCE OF 32.34 FEET; THENCE NORTH 86°19'45" WEST, A DISTANCE OF 1.08 FEET;
THENCE NORTH 88°46'19" WEST, A DISTANCE OF 83.57 FEET; THENCE NORTH 88°16'49" WEST,
A DISTANCE OF 83.50 FEET; THENCE NORTH 87°33'01" WEST, A DISTANCE OF 95.89 FEET;
THENCE NORTH 88°42'12" WEST, A DISTANCE OF 89.14 FEET; THENCE NORTH 85°24'16" WEST,
A DISTANCE OF 85.28 FEET; THENCE NORTH 88°22'47" WEST, A DISTANCE OF 81.28 FEET;
THENCE NORTH 87°10'23" WEST, A DISTANCE OF 80.55 FEET; THENCE NORTH 88°05'42" WEST,
A DISTANCE OF 54.10 FEET; THENCE NORTH 87°24'33" WEST, A DISTANCE OF 69.30 FEET;
THENCE NORTH 88°16'57" WEST, A DISTANCE OF 84.91 FEET; THENCE NORTH 88°20'26" WEST,
A DISTANCE OF 116.30 FEET; THENCE NORTH 89°24'19" WEST, A DISTANCE OF 96.09 FEET;
THENCE NORTH 89°05'24" WEST, A DISTANCE OF 68.36 FEET; THENCE SOUTH 88°57'28" WEST,
A DISTANCE OF 146.61 FEET; THENCE NORTH 89°09'19" WEST, A DISTANCE OF 16.14 FEET;
THENCE NORTH 88°26'40" WEST, A DISTANCE OF 71.23 FEET; THENCE NORTH 88°14'53" WEST,
A DISTANCE OF 83.50 FEET; THENCE NORTH 88°19'15" WEST, A DISTANCE OF 15.99 FEET;
THENCE NORTH 85°01'23" WEST, A DISTANCE OF 108.19 FEET; THENCE NORTH 85°17'22" WEST,
A DISTANCE OF 16.53 FEET; THENCE NORTH 88°09'51" WEST, A DISTANCE OF 84.99 FEET;
THENCE NORTH 87°24'33" WEST, A DISTANCE OF 107.64 FEET; THENCE NORTH 85°49'09" WEST,
A DISTANCE OF 31.10 FEET; THENCE NORTH 88°19'05" WEST, A DISTANCE OF 154.83 FEET;
THENCE NORTH 87°24'33" WEST, A DISTANCE OF 107.64 FEET; THENCE NORTH 86°26'48" WEST,
A DISTANCE OF 131.23 FEET; THENCE SOUTH 73°42'41" WEST, A DISTANCE OF 5.33 FEET TO
A POINT ON THE PREVIOUSLY DESCRIBED EAST RIGHT-OF-WAY LINE OF KIRK ROAD; THENCE NORTH
81°40'25" EAST, ALONG SAID EAST RIGHT-OF-WAY LINE OF KIRK ROAD, A DISTANCE OF 20.37
FEET TO THE POINT OF BEGINNING.

CONTAINING 45,183 SQUARE FEET, OR 1.037 ACRES, MORE OR LESS.

RIGHT OF WAY DEDICATION OF AREAS SHOWN HEREON BY MAINTENANCE

STATE OF FLORIDA
COUNTY OF PALM BEACH

APPROVED AND ADOPTED BY THE BOARD OF COUNTY COMMISSIONERS, PALM BEACH COUNTY, FLORIDA
ON THIS DATE MARY LOU BERGER AND SHARON H. BOCK, RESPECTIVELY MAYOR OF THE BOARD OF COUNTY
COMMISSIONERS AND CLERK OF THE CIRCUIT COURT OF PALM BEACH COUNTY, FLORIDA, DO HEREBY
CERTIFY THAT THE COUNTY ROAD HEREFORE KNOWN AND DESIGNATED AS CANAL ROAD IN PALM
BEACH COUNTY, FLORIDA, AS SHOWN ON THE MAP, TO WHICH THIS CERTIFICATE IS AFFIXED, HAVE BEEN
MAINTAINED, KEPT IN REPAIR AND WORKED CONTINUOUSLY AND UNINTERRUPTEDLY FOR A PERIOD OF
MORE THAN SEVEN YEARS BY THE COUNTY OF PALM BEACH, FLORIDA, TO THE EXTENT IN BOTH AS
SHOWN ON SAID MAP AND RIGHT OF WAY AS SHOWN IS DEEMED TO BE DEDICATED TO THE PUBLIC.
THE TITLE TO THE RIGHTS OF WAY OF SAID ROAD IS HEREBY VESTED IN THE COUNTY OF PALM BEACH,
A POLITICAL SUBDIVISION OF THE STATE OF FLORIDA, IN ACCORDANCE WITH THE PROVISIONS OF
CHAPTER SECTION 95.341 (FORMERLY SECTION 337.31), FLORIDA STATUTES 2012.

DATE

BY: PAULETTE BURDICK, MAYOR
BOARD OF COUNTY COMMISSIONERS

BY: SHARON H. BOCK,
CLERK AND COMPTROLLER

BY: GEORGE F. WEBB, P.E.
COUNTY ENGINEER

THIS IS TO CERTIFY THAT THE WIDTH AND EXTENT OF THE AREAS SHOWN HEREON ARE A TRUE
AND CORRECT REPRESENTATION OF THE AREAS WHICH HAVE BEEN CONTINUOUSLY MAINTAINED FOR A PERIOD OF MORE THAN SEVEN (7)
YEARS BY THE BOARD OF COUNTY COMMISSIONERS.

David Danson
DAVID W. DANSON, DIRECTOR
ROAD AND BRIDGE DIVISION
ENGINEERING AND PUBLIC WORKS
PALM BEACH COUNTY, FLORIDA

DATE: 12-30-16

SURVEYOR'S REPORT

- THIS IS A MAINTENANCE MAP/SPECIFIC PURPOSE SURVEY SHOWING THE LIMITS OF MAINTENANCE ALONG CANAL ROAD FROM KIRK ROAD TO DAVIS ROAD LYING IN SECTION 19, TOWNSHIP 44 SOUTH, RANGE 43 EAST, PALM BEACH COUNTY, FLORIDA.
- THE PROJECT LIMITS WERE ESTABLISHED USING CONVENTIONAL SURVEYING PROCEDURES AND A FIELD SURVEY WAS DONE TO LOCATE THE LIMITS OF MAINTENANCE. THE LIMITS OF MAINTENANCE WERE DETERMINED BY PALM BEACH COUNTY ROAD AND BRIDGE FORCES, NOT THE SURVEYING SURVEYOR.
- A CLOSED FIELD TRAVELER WAS RUN THROUGH ROUND PALM BEACH COUNTY HORIZONTAL CONTROL MONUMENTS, TOWNERS' POINT, AND POINT TO ESTABLISH STATE PLANE COORDINATE VALUES FOR THE ENTIRE SITE.
- ESTABLISHED HORIZONTAL CONTROL IS BASED ON THE MEASUREMENTS SHOWN HEREON UNDER THE RELATIVE DISTANCE ACCURACY REQUIREMENT OF 1:10,000 (COMMERCIAL/HIGH RISK) REQUIRED FOR THIS SURVEY.
- NO SEARCH OF THE PUBLIC RECORDS HAS BEEN MADE BY THE SURVEYING SURVEYOR. IT IS POSSIBLE THAT THERE ARE DEEDS OF RECORD, UNRECORDED DEEDS, EASEMENTS, OR OTHER INSTRUMENTS WHICH COULD AFFECT THE SUBJECT PROPERTY, WHICH ARE UNKNOWN TO THE SURVEYING SURVEYOR.
- THIS INSTRUMENT PREPARED BY WAYNE LURIE, FISH P.S.M. IN THE OFFICE OF THE COUNTY ENGINEER, VISTA CENTER 2300 NORTH JCG ROAD, WEST PALM BEACH, FLORIDA 33411-2745.
- UNDERGROUND FOUNDATIONS AND UTILITIES MAY BE PRESENT, BUT UNDERGROUND FOUNDATIONS OR UTILITIES WERE LOCATED BY THIS SURVEY.
- BEARINGS ARE BASED ON A GRID (NAD 83) WHO ADJUSTMENT BEARING OF SOUTH 88°05'18" EAST ALONG THE EAST-WEST QUARTER SECTION LINE OF SECTION 19, TOWNSHIP 44 SOUTH, RANGE 43 EAST, BASED ON PALM BEACH COUNTY PUBLISHED VALUES FOR THE SECTION AND QUARTER SECTION CORNERS FOR SAID SECTION 19 AND ALL OTHER BEARINGS ARE RELATIVE THERETO.
- FILE NAMES ARE CANAL ROAD GRID 554, CANAL ROAD P&M AND S-3-15-16M.DEN.
- THE INTENDED PLOT SCALE OF THIS DRAWING IS 1" = 300' ON 24" X 36" PAPER.
- ALL FEATURE SYMBOLS SHOWN ARE NOT TO SCALE. COORDINATES SHOWN ARE GRID. DATUM = NAD 83 WHO ADJUSTMENT ZONE = FLORIDA EAST. LINEAR UNITS = SURVEYING FOOT. COORDINATE SYSTEM: NAD 83 STATE PLANE TRANSVERSE MERCATOR PROJECTION. ALL DISTANCES ARE GROUND. PLOT SCALE FACTOR = 1.000401027. GROUND DISTANCE X SCALE FACTOR = GRID DISTANCE. ALL DISTANCES ARE GROUND.
- FIELD WORK COMPLETED 12/24/2016 IN FIELD BOOK 1037A, PAGES 9-17.
- THE PROPERTY LIMITS FOR THE LOTS SHOWN HEREON ARE CALCULATED BASED ON THE FIELD BOOK CORNER PLAT NO. 145 RECORDED IN DEED BOOK 38, PAGE 38. SAID PLAT WAS BASED ON DOCUMENTATION FOR THE SOUTHWEST ONE-QUARTER OF SAID SECTION 19 THAT WAS ULTIMATELY PERPETUATED BY PALM BEACH COUNTY SURVEY SECTION. THIS MAP REPRESENTS AN AS Laid OUT IN USE AND MAINTAINED LOCATION OF CANAL ROAD. ADDITIONAL INFORMATION TO SUPPORT THE CONCLUSIONS SHOWN ON THIS MAP CAN BE FOUND IN THE PROJECT FILE IN THE OFFICE OF THE COUNTY ENGINEER.

SURVEYOR'S CERTIFICATE

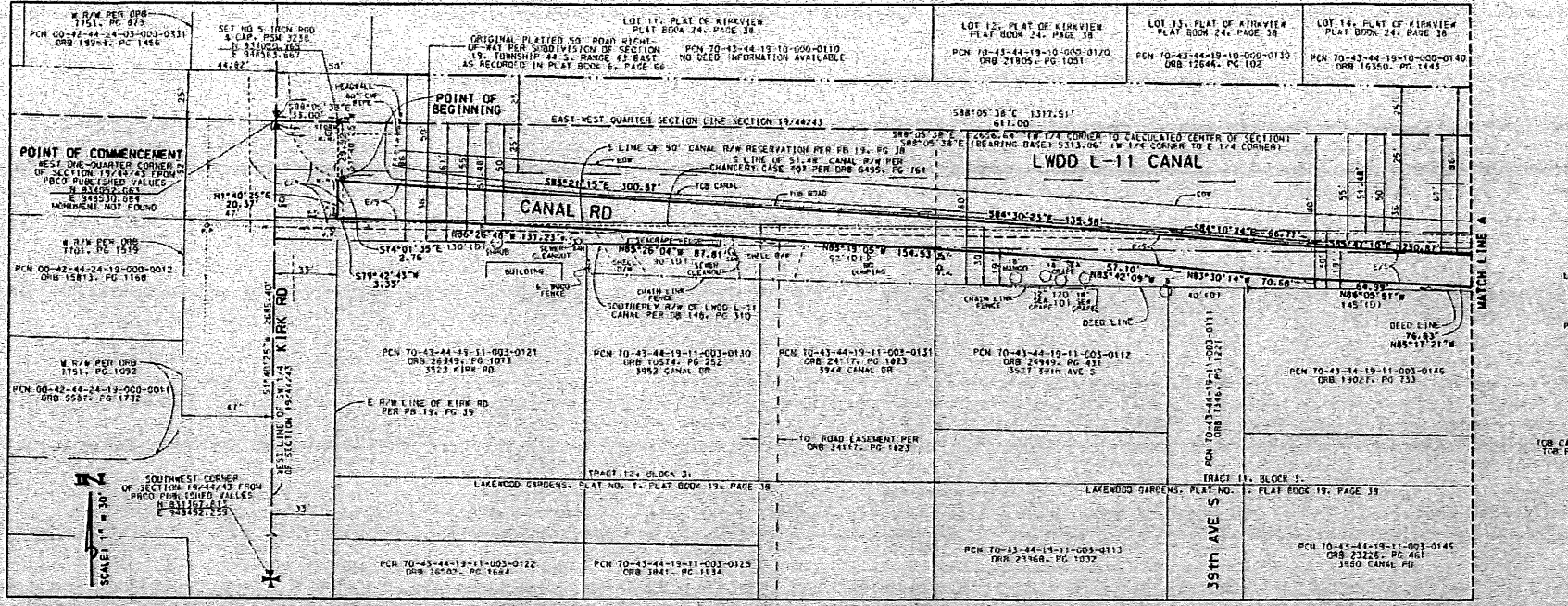
I HEREBY CERTIFY THAT THE MAINTENANCE MAP AND SPECIFIC PURPOSE SURVEY PRESENTED HEREIN IS THE RESULT OF A FIELD SURVEY CONDUCTED UNDER MY DIRECTION. THIS MAP DEPICTS THE LOCATION OF PUBLIC RIGHTS OF WAY AND AREAS MAINTAINED BY COUNTY FORCES FOR THE CERTIFICATION OF THE DIRECTOR OF THE ROAD AND BRIDGE DIVISION WITHIN THE CORRIDOR DEPICTED HEREON. THE MAP REPRESENTS MEET THE FLORIDA STANDARDS OF PRACTICE AS SET FORTH BY THE FLORIDA BOARD OF PROFESSIONAL LAND SURVEYORS' RULE 6S-17.050-052, FLORIDA ADMINISTRATIVE CODE PURSUANT TO CHAPTER 472.027, FLORIDA STATUTES.

DATE: 01/05/2017

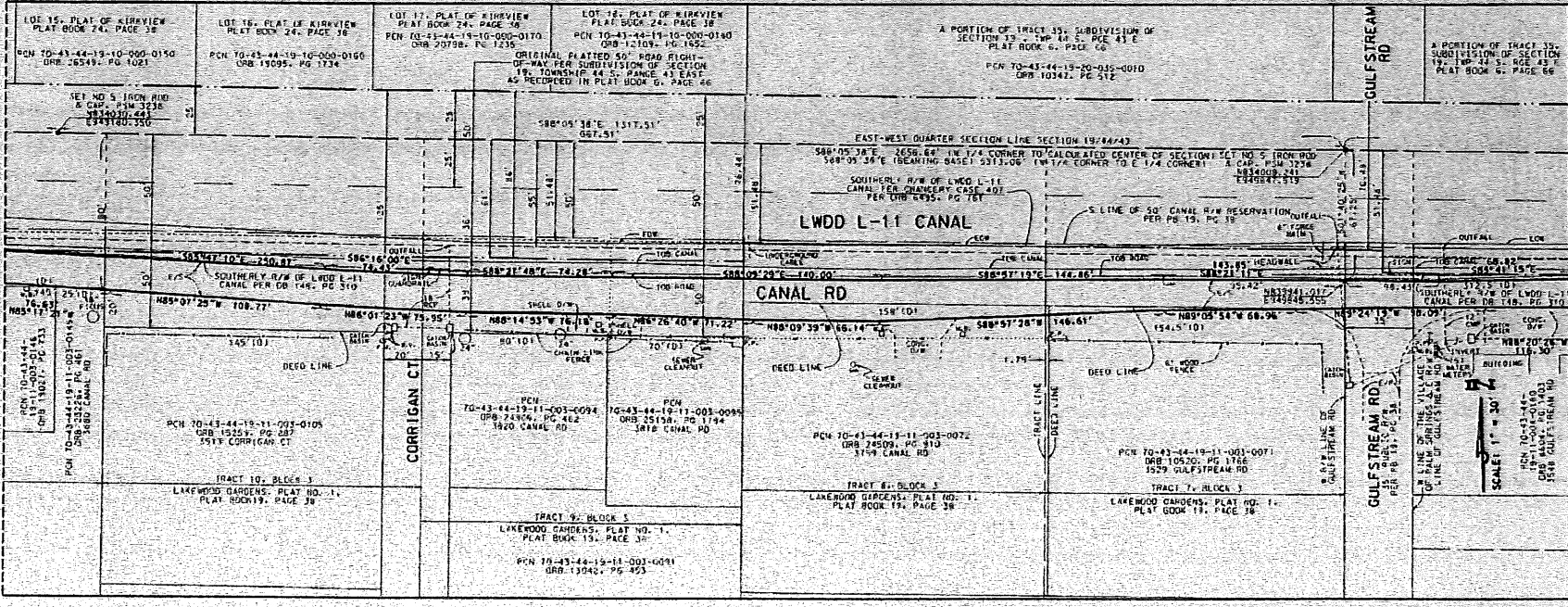
Wayne Lurie
WAYNE LURIE, FISH P.S.M.
PROFESSIONAL SURVEYOR AND MAPPER
FLORIDA CERTIFICATE NO. 3238

NOT VALID WITHOUT THE SIGNATURE AND ORIGINAL RAISED SEAL OF A FLORIDA LICENSED SURVEYOR AND MAPPER

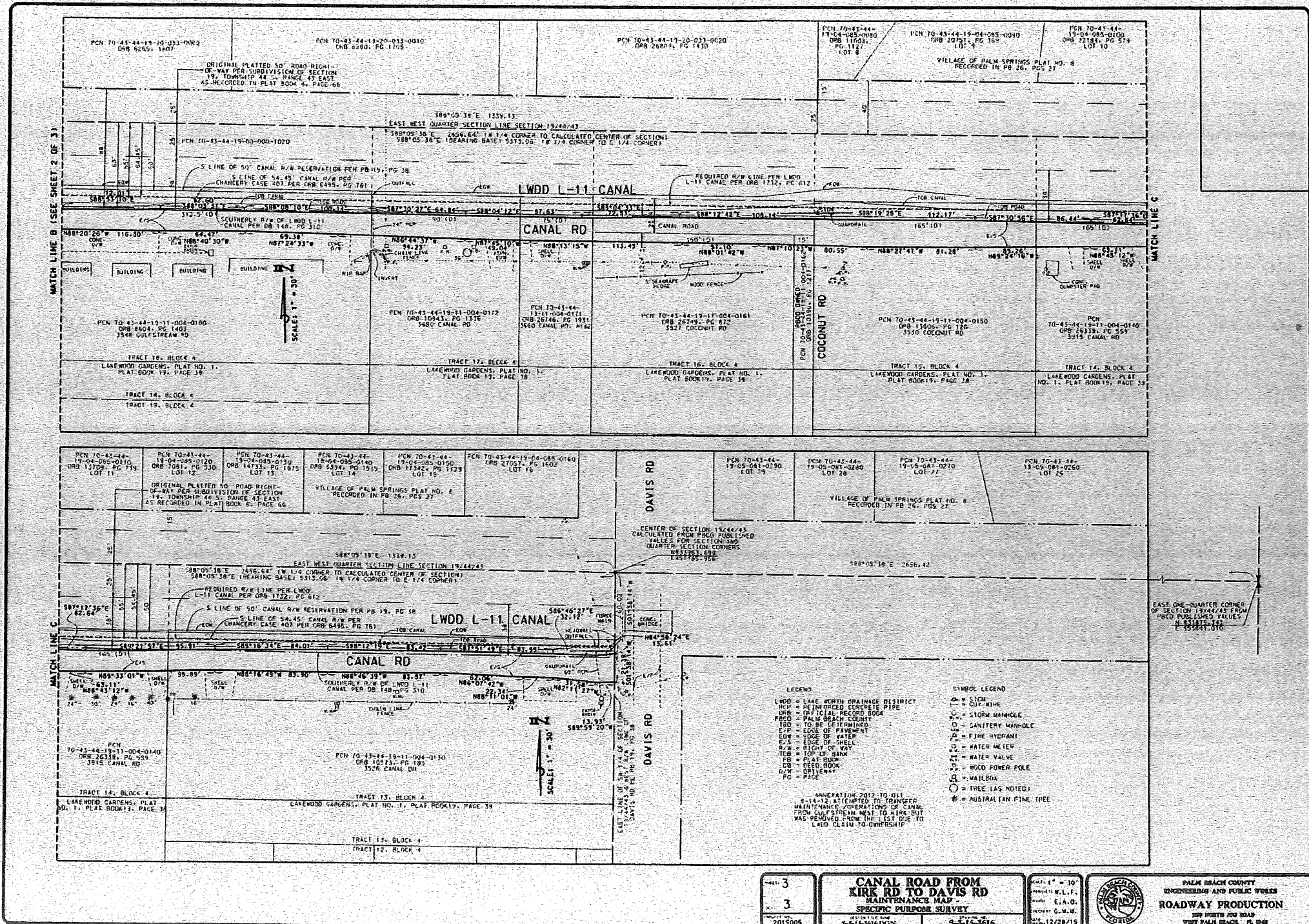
PROJECT NO. 2015005	DATE: 12-30-16	SCALE: 1" = 30'	DATE: 12/28/2015
CANAL ROAD FROM KIRK RD TO DAVIS RD MAINTENANCE MAP SPECIFIC PURPOSE SURVEY		DATE: 12/28/2015	DATE: 12/28/2015
PALM BEACH COUNTY ENGINEERING AND PUBLIC WORKS ROADWAY PRODUCTION		DATE: 12/28/2015	DATE: 12/28/2015



- LEGEND**
- LWDD = LAKE WORTH DRAINAGE DISTRICT
 - RCP = REINFORCED CONCRETE PIPE
 - CMP = CORRUGATED METAL PIPE
 - DB = OFFICIAL RECORD BOOK
 - PCD = PALM BEACH COUNTY DEED
 - E/P = TO BE DETERMINED
 - EW = EDGE OF WATER
 - ES = EDGE OF SHOULDER
 - EW = EDGE OF WATER
 - TR = TOP OF BANK
 - PR = PLAT BOOK
 - DB = DEED BOOK
 - D/W = DRIVEWAY
 - FO = FOOTING
 - PC = PAGE
 - TWP = TOWNSHIP
 - RZ = RANGE
 - TCR CANAL = TOP OF BANK CANAL
 - TRC ROAD = TOP OF BANK ROAD
- SYMBOL LEGEND**
- = SET IRON ROD
 - = CAP 1238
 - △ = RICE
 - = GUT WIRE
 - ⊙ = STORM MANHOLE
 - ⊕ = SANITARY MANHOLE
 - ⊞ = FIRE HYDRANT
 - ⊞ = WATER METER
 - ⊞ = WATER VALVE
 - ⊞ = WOOD POWER POLE
 - ⊞ = MAILBOX
 - ⊞ = TREE (AS NOTED)
 - ⊞ = AUSTRALIAN PINE TREE
- ANNEALING 2012-10-01**
 6-14-12 ATTEMPTED TO TRANSFER MAINTENANCE OPERATIONS OF CANAL FROM GULFSTREAM WEST TO KIRK BUT WAS REMOVED FROM THE LIST DUE TO LWDD CLAIM TO OWNERSHIP



SHEET 2 OF 3 PROJECT NO. 2015005	CANAL ROAD FROM KIRK RD TO DAVIS RD MAINTENANCE MAP SPECIFIC PURPOSE SURVEY DATE: 12/28/15	SCALE: 1" = 30' DRAWN BY: W.L.F. CHECKED BY: E.A.O. DATE: 12/28/15	PALM BEACH COUNTY ENGINEERING AND PUBLIC WORKS ROADWAY PRODUCTION 500 NORTH AVE ROAD WEST PALM BEACH, FL 33411
---	--	---	---



3
3
2015005

CANAL ROAD FROM KIRE RD TO DAVIS RD MAINTENANCE MAP - SPECIFIC PURPOSE SURVEY

DATE: 11-12-2015

SCALE: 1" = 30'
DRAWN: W.L.F.
CHECKED: E.A.G.
PROJECT: C.M.M.



PALM BEACH COUNTY ENGINEERING AND PUBLIC WORKS ROADWAY PRODUCTION

2015 NORTH JOB ROAD
WEST PALM BEACH, FL 33411