



**II. FISCAL IMPACT ANALYSIS**

**A. Five Year Summary of Fiscal Impact:**

<b>Fiscal Years</b>	<b>2017</b>	<b>2018</b>	<b>2019</b>	<b>2020</b>	<b>2021</b>
Capital Expenditures	0				
Operating Costs	0				
External Revenues	0				
Program Income (County)					
In-Kind Match (County)					
 Net Fiscal Impact	 * 0				
 # Additional FTE Positions (Cumulative)	 0				

Is Item Included in Current Budget: YES \_\_\_\_\_ NO \_\_\_\_\_

Budget Account No.: Fund \_\_\_\_\_ Agency \_\_\_\_\_ Org \_\_\_\_\_ Object \_\_\_\_\_

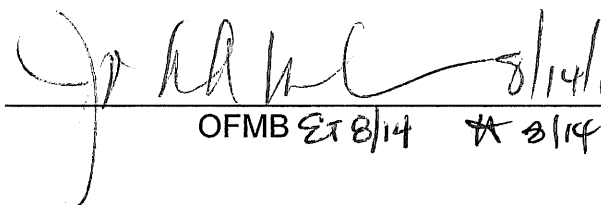
Reporting Category \_\_\_\_\_

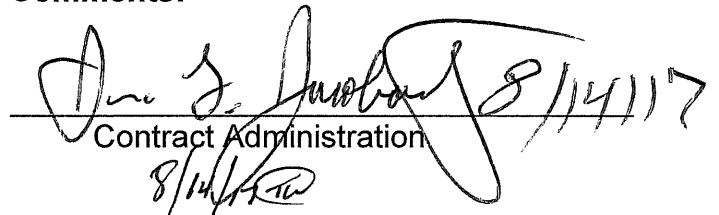
**B. Recommended Sources of Funds / Summary of Fiscal Impact:**

\* No Fiscal impact.


**III REVIEW COMMENTS**

**A. OFMB Fiscal and/or Contract Administration Comments:**

  
 \_\_\_\_\_  
 OFMB ET 8/14 \* 8/14

  
 \_\_\_\_\_  
 Contract Administration  
 8/14/17

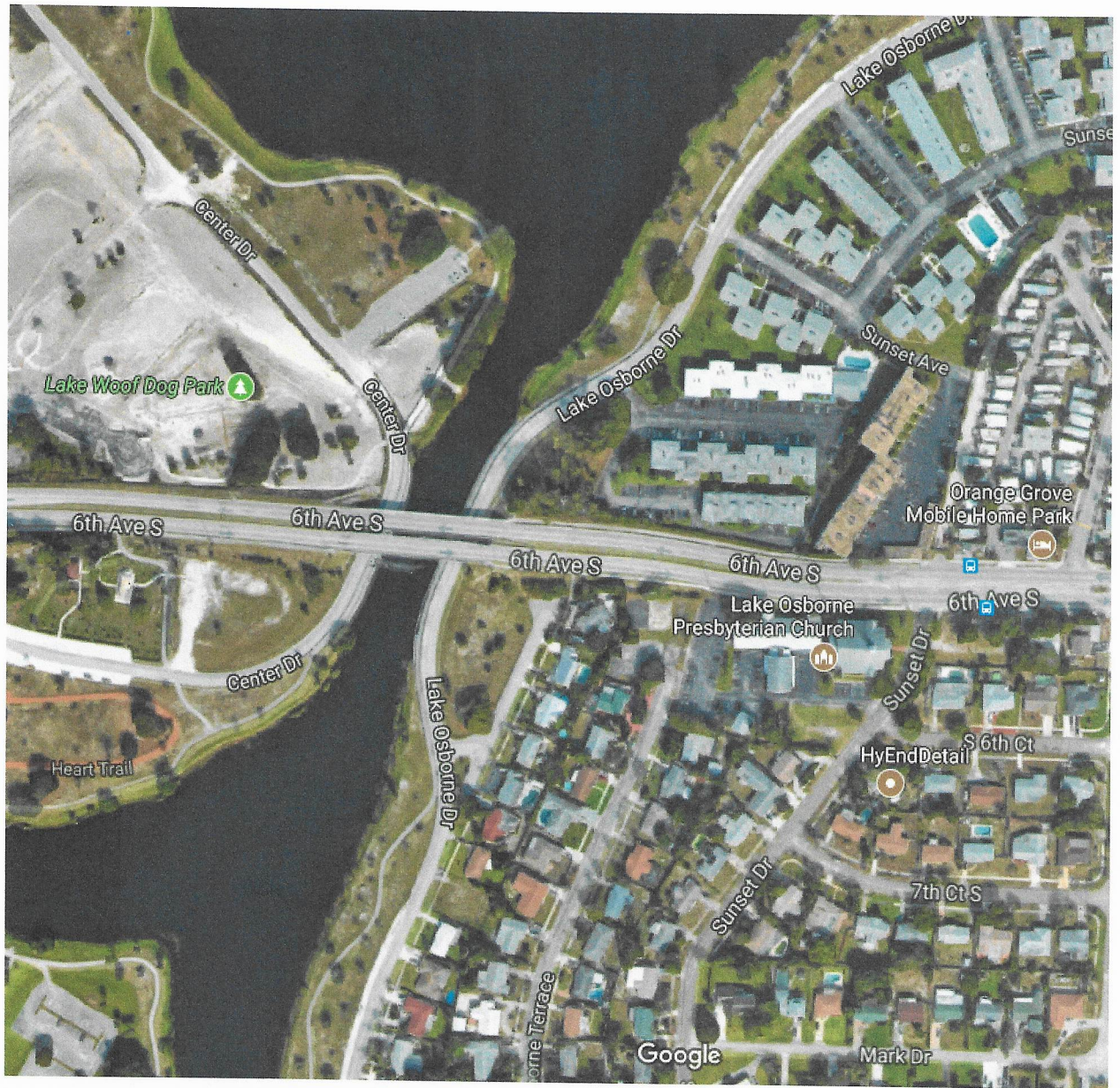
**B. Legal Sufficiency:**

  
 \_\_\_\_\_  
 Assistant County Attorney

**C. Other Department Review:**

\_\_\_\_\_  
 Department Director

**This summary is not to be used as a basis for payment.**



**RESOLUTION OF THE BOARD OF COUNTY COMMISSIONERS  
OF PALM BEACH COUNTY, FLORIDA, DEDICATING THE 6<sup>TH</sup>  
AVENUE SOUTH BRIDGE TO GEORGE T. WEBB FOR HIS 35  
YEARS OF SERVICE TO PALM BEACH COUNTY**

**WHEREAS**, George Thomas Webb, P.E., is a native of Palm Beach County, born in West Palm Beach and raised in Lake Worth, is a graduate of Lake Worth High School; received a bachelor's degree in civil engineering and a master's degree in transportation engineering from the University of Florida; and

**WHEREAS**, Mr. Webb, having been selected as county engineer in 1991, is Palm Beach County's longest-serving county engineer, with 26 years in that job; and

**WHEREAS**, Mr. Webb's family has a long record of employment with the Palm Beach County Engineering Department beginning with his great uncle, who began the family tradition in 1929 and worked for 41 years; his grandfather, who worked four years in the 1940's; his father, who worked eight years in the 1960's -70's; and George, who added to this tradition with a total of 35 years with the Engineering Department; and

**WHEREAS**, Mr. Webb was responsible for the construction of more than \$1.3 billion in roads, the construction of the Beach County Courthouse, which opened in 1993, and the installation of many of the County's 1,000 traffic signals; and

**WHEREAS**, Mr. Webb was selected by the U.S. Secretary of Transportation to serve two consecutive appointments to the 15-member National Connected Vehicles Advisory Committee and as a designated local representative to the Federal Highway Administration's Connected Vehicle Program; and

**WHEREAS**, Mr. Webb has been awarded with the American Public Works Association 2014 Florida Public Works Director of the Year, the American Society of Civil Engineers Palm Beach Branch 2015-16 Government Engineer of the Year, and the Florida Engineering Society Palm Beach Chapter 2016-17 Award for Outstanding Service to the Engineering Profession; and

**WHEREAS**, Mr. Webb's service with professional organization includes serving as the national president of the National Association of County Engineers (NACE), as the Florida representative to NACE, as the NACE representative to the National Association of Counties board of directors, as the state president of the Florida Association of County Engineers and Road Superintendents, and on the Florida Department of Transportation's Greenbook Committee, responsible for continually updating state roadway design standards; and

**WHEREAS**, Mr. Webb regularly speaks to homeowner associations, civic organizations, and local governments on transportation issues affecting their jurisdictions; and

**WHEREAS**, Palm Beach County residents have benefited immeasurably from Mr. Webb's passion for, and dedication to, building a safe and efficient countywide roadway network incorporating a state-of-the-art traffic signal system.

**NOW, THEREFORE, BE IT RESOLVED BY THE BOARD OF COUNTY COMMISSIONERS OF PALM BEACH COUNTY, FLORIDA, that:**

The 6<sup>th</sup> Avenue South Bridge over Lake Osborne is dedicated to George T. Webb.

The foregoing Resolution was offered by Commissioner \_\_\_\_\_, who moved its adoption. The motion was seconded by Commissioner \_\_\_\_\_ and upon being put to a vote, the vote was as follows:

Commissioner Paulette Burdick, Mayor  
Commissioner Melissa McKinlay, Vice Mayor  
Commissioner Hal P. Valeche  
Commissioner Dave Kerner  
Commissioner Stephen L. Abrams  
Commission Mary Lou Berger  
Commissioner Mack Bernard

The Mayor thereupon declared the resolution duly passed and adopted this \_\_\_\_\_ day of \_\_\_\_\_, 2017.

APPROVED AS TO FORM  
AND LEGAL SUFFICIENCY  
COMMISSIONERS

PALM BEACH COUNTY, FLORIDA  
BY ITS BOARD OF COUNTY

Sharon R. Bock,  
Clerk & Comptroller

By \_\_\_\_\_  
County Attorney

By: \_\_\_\_\_  
Deputy Clerk