

PALM BEACH COUNTY
BOARD OF COUNTY COMMISSIONERS

AGENDA ITEM SUMMARY

Meeting Date: March 13, 2018

Consent [X] Regular []
Public Hearing []

Department: Water Utilities Department

I. EXECUTIVE BRIEF

Motion and Title: Staff recommends motion to adopt: a Resolution of the Board of County Commissioners of Palm Beach County, Florida, amending Resolution No. R2017-0675 pertaining to the Special Assessment process for the 68th Street North Water Main Extension (Project), reducing the individual assessment from \$56.33 to \$49.84 per front-footage.

Summary: On May 16, 2017 the Palm Beach County Board of County Commissioners adopted Resolution R2017-0675 confirming the Project. Pursuant to Section 9 of Ordinance No. 2001-0010, property owners are entitled to a reduction in their individual assessment if the final cost of the project falls below the original estimate. The assessment adopted by the Board was based upon an estimated assessable cost of \$239,560.26 before construction. The actual assessable cost is \$211,959.50 after completion of construction. The Project is based on 18 residential properties with a total frontage of 4,252.80 feet. The individual cost to the property owners decreased from \$56.33 to \$49.84 utilizing the per front-footage. (WUD Project No. 16-079) District 6 (MJ).

Background and Justification: The estimated assessable cost of \$239,560.26 was adjusted by a decrease in fees totaling \$27,600.76 resulting in an actual assessable cost of \$211,959.50. The adjustment in fees are made up of decreases in construction costs (\$9,816.48), contingencies (\$19,951.25), inspection fees (\$392.66), administration fees (\$490.82), administrative adjustment (\$14.67) and a reduction of the 10% financial support (\$3,065.12) as per the agreement between the County and Indian Trails Improvement District, in which the County will provide for 10% of the total project cost, resulting in an actual project assessable cost of \$211,959.50. All other portions of Resolution No. R2017-0675, remain in full force and effect.

Attachments:

1. One (1) Original Amending Resolution
2. Location Map
3. Special Assessment Roll - Final
4. Copy of Confirming Resolution No. R2017-0675
5. Report of Cost – Final
6. Final Authorization Summary - Approved

Recommended By: Jim Stella 2-12-18
Department Director Date

Approved By: [Signature] 2/22/18
Deputy County Administrator Date

II. FISCAL IMPACT ANALYSIS

A. Five Year Summary of Fiscal Impact:

Fiscal Years	2018	2019	2020	2021	2022
Capital Expenditures	(\$27,601)	<u>0</u>	<u>0</u>	<u>0</u>	<u>0</u>
Operating Costs	<u>0</u>	<u>0</u>	<u>0</u>	<u>0</u>	<u>0</u>
External Revenues	(\$27,601)	<u>0</u>	<u>0</u>	<u>0</u>	<u>0</u>
Program Income (County)	<u>0</u>	<u>0</u>	<u>0</u>	<u>0</u>	<u>0</u>
In-Kind Match County	<u>0</u>	<u>0</u>	<u>0</u>	<u>0</u>	<u>0</u>
NET FISCAL IMPACT	<u>0</u>	<u>0</u>	<u>0</u>	<u>0</u>	<u>0</u>
# ADDITIONAL FTE POSITIONS (Cumulative)	<u>0</u>	<u>0</u>	<u>0</u>	<u>0</u>	<u>0</u>
Budget Account No.:	Fund <u>4011</u>	Dept <u>721</u>	Unit <u>W031</u>	Object <u>6543</u>	

Is Item Included in Current Budget? Yes X No

Does this item include the use of federal funds? Yes No X

Reporting Category N/A

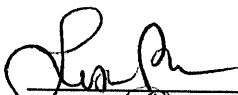
B. Recommended Sources of Funds/Summary of Fiscal Impact:

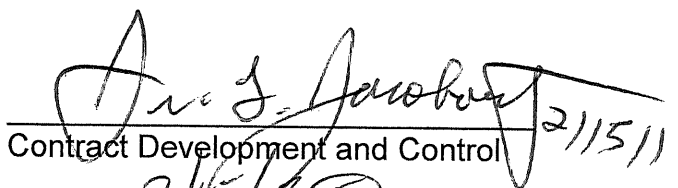


C. Department Fiscal Review: _____

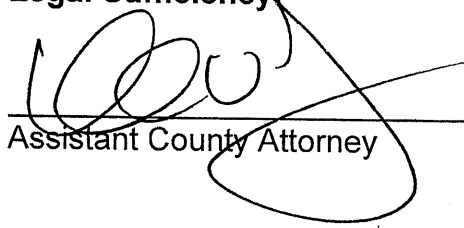
III. REVIEW COMMENTS

A. OFMB Fiscal and/or Contract Development and Control Comments:


 OFMB (R) 2/14 2/15/18
2/15/18


 Contract Development and Control 2/15/18
 2/15/18

B. Legal Sufficiency:


 Assistant County Attorney 2/22/18

C. Other Department Review:

 Department Director

This summary is not to be used as a basis for payment.

ATTACHMENT 1

RESOLUTION NO. R-2018-

RESOLUTION OF THE BOARD OF COUNTY COMMISSIONERS OF PALM BEACH COUNTY, FLORIDA, AMENDING RESOLUTION R-2017-0675; PERTAINING TO THE SPECIAL ASSESSMENT PROCESS FOR THE 68th STREET NORTH WATER MAIN EXTENSION

WHEREAS, on May 16, 2017, in accordance with the Palm Beach County Ordinance 2001-0010, the Board of County Commissioners, Palm Beach County, Florida, adopted Resolution No. R-2017-0675, confirming the special assessment process for the 68th Street North Water Main Extension; and

WHEREAS, pursuant to Section 9 of Ordinance 2001-0010, the Board of County Commissioners may credit to each assessment the difference between the original assessment made, approved and confirmed and the proportionate part of the actual cost of the improvement to be paid by special assessments as determined upon completion of the project; and

WHEREAS, construction of the 68th Street North Water Main Extension is complete (see Attachment "6" – "Final Authorization Summary"; and

WHEREAS, the total assessable cost of the 68th Street North Water Main Extension has been reduced by \$27,600.76 from \$239,560.26 to \$211,959.50; and

WHEREAS, pursuant to Section 9 of Ordinance 2001-0010 the Board of County Commissioners desires to amend Resolution No. R-2017-0675.

NOW, THEREFORE, BE IT RESOLVED BY THE BOARD OF COUNTY COMMISSIONERS OF PALM BEACH COUNTY, FLORIDA, THAT:

1. Attachment "3" (Special Assessment Roll) to Resolution No. R-2017-0675 is hereby amended by reducing the total assessable cost of the 68th Street North Water Main Extension from \$239,560.26 to \$211,959.50 and reducing the individual assessment from \$56.33 per front-footage to \$49.84 per front-footage based on eighteen (18) residential properties. The Special Assessment Roll, as hereby amended, is attached hereto, and incorporated herein as Attachment "3".

2. Paragraph Four (4) of Resolution No. R-2017-0675 is hereby amended by deleting "\$266,176.86" and inserting "\$235,510.98" in its place.

3. Attachment "5" (Report of Cost) to Resolution No. R-2017-0675 is hereby amended by changing the total assessable cost of the 68th Street North Water Main Extension to \$211,959.50 The Report of Cost as hereby amended is attached hereto and incorporated as Attachment "5".

4. Each and every other paragraph of Resolution No. R-2017-0675 shall remain in full force and effect and said Resolution is reaffirmed as modified herein.

5. The Clerk of this Board shall cause this Resolution to be recorded in the Official Records of Palm Beach County, Florida, in the Office of the Clerk of the Circuit Court.

The foregoing Resolution was offered by Commissioner _____
who moved its adoption. The motion was seconded by Commissioner _____
and upon being put to a vote; the vote was as follows:

Commissioner Melissa McKinley, Mayor
Commissioner Mack Bernard, Vice Mayor
Commissioner Hal Valeche
Commissioner Paulette Burdick
Commissioner Dave Kerner
Commissioner Steven L. Abrams
Commissioner Mary Lou Berger

The Mayor thereupon declared the Resolution duly passed and adopted this ____ day of _____, 2018.

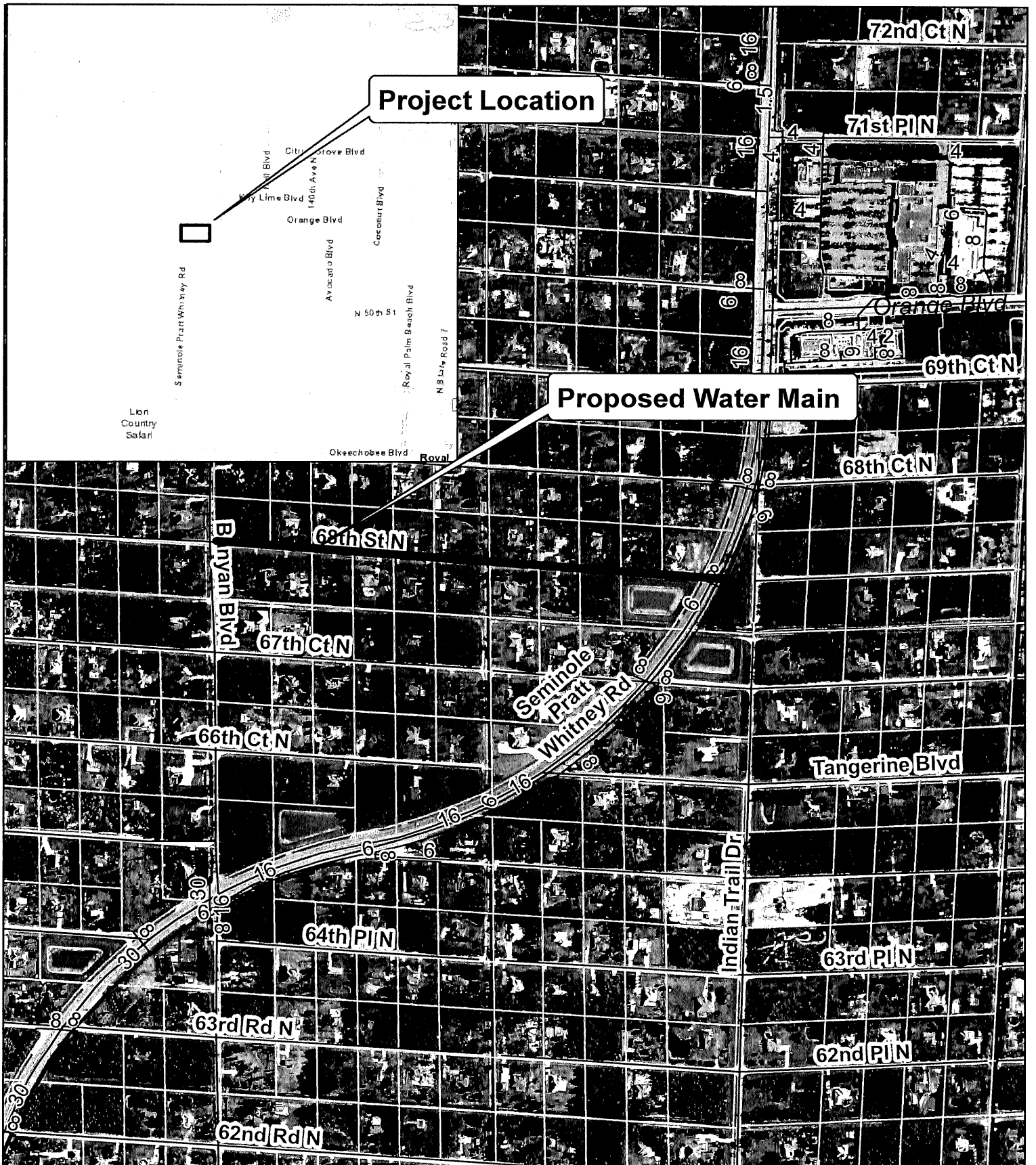
PALM BEACH COUNTY, FLORIDA,
BY ITS BOARD OF COUNTY COMMISSIONERS

By: _____
Sharon R. Bock, Clerk and Comptroller

APPROVED AS TO FORM AND
LEGAL SUFFICIENCY

By _____

ATTACHMENT 2 PROJECT LOCATION MAP WUD 16-079 68th Street North Water Main Extension





ATTACHMENT 3

Project#: 16-079

Assessment Roll - Final

68TH STREET NORTH
WATER MAIN EXTENSION

FUND	AGENCY	ORG	COMMISSION DISTRICT	SECTION	TOWNSHIP	RANGE
			6 MELISSA MCKINLAY	36	42S	40E

No.	Homeowner	PCN/Legal Description	Feet	Cost/Per Foot	Total Assessment	Annual Cost/Per Foot	Annual Cost/Per Year	Notes
1	DE AMINI EVA KOVES 10978 NW 43RD TER MIAMI, FL 33178-1813	00-40-42-36-00-000-137.0 36-42-40, S 242.9 FT OF N 3016.5 FT A/K/A M-201	275.90	\$49.84	\$13,750.86	4.1705778	\$1,150.66	Initial Final Petition
2	CARDONA CESAR 16417 68TH ST N LOXAHATCHEE, FL 33470-3334	00-40-42-36-00-000-138.0 36-42-40, S 242.9 FT OF N 3221.1 FT A/K/A M-171	204.60	\$49.84	\$10,197.26	4.1705778	\$853.30	Initial Final Petition
3	HUNTER, EDWARD & DENISE ** Confidential Record **	00-40-42-36-00-000-139.0 36-42-40, S 242.9 FT OF N 3425.7 FT A/K/A M-164	204.60	\$49.84	\$10,197.26	4.1705778	\$853.30	Initial Final Y Petition
4	CARPINO, MICHAEL 16343 68TH ST N LOXAHATCHEE, FL 33470-6012	00-40-42-36-00-000-140.0 36-42-40, S 242.9 FT OF N 3630.3 FT A/K/A M-132	204.60	\$49.84	\$10,197.26	4.1705778	\$853.30	Initial Final Y Petition
5	RODRIGUEZ, WILLIAM 16303 68TH ST N LOXAHATCHEE, FL 33470-6012	00-40-42-36-00-000-141.0 36-42-40, S 242.9 FT OF N 3834.9 FT A/K/A M-125	204.60	\$49.84	\$10,197.26	4.1705778	\$853.30	Initial Final Y Petition

Assessments which have not been paid in full within thirty days after completion of the subject improvements for which said assessment was made, will be charged interest at a rate of five and a half (5.5) percent per annum from the date of the acceptance of said improvement by Palm Beach County and shall be payable in twenty equal annual installments of principal and interest.



Assessment Roll - Final
68TH STREET NORTH
WATER MAIN EXTENSION

Project#: 16-079

FUND AGENCY ORG	COMMISSION DISTRICT	SECTION TOWNSHIP RANGE
	6 MELISSA MCKINLAY	36 42S 40E

No.	Homeowner	PCN/Legal Description	Feet	Cost/Per Foot	Total Assessment	Annual Cost/Per Foot	Annual Cost/Per Year	Notes
6	VALENTINE RICHARD D 16267 68TH ST N LOXAHATCHEE, FL 33470-3469	00-40-42-36-00-000-142.0 36-42-40, S 242.9 FT OF N 981.6 FT OF E 276 FT OF W 4110.9 FT A/K/A M-94	276.00	\$49.84	\$13,755.84	4.1705778	\$1,151.08	Initial Final Petition
7	PAIGE, PATRICIA A 16229 68TH ST N LOXAHATCHEE, FL 33470-3469	00-40-42-36-00-000-143.0 36-42-40, S 242.9 FT OF N 981.6 FT OF E 244.6 FT OF W 4355.5 FT A/K/A M-87	244.60	\$49.84	\$12,190.86	4.1705778	\$1,020.12	Initial Final Y Petition
8	GOOSSENS, CHAD 16191 68TH ST N LOXAHATCHEE, FL 33470-3469	00-40-42-36-00-000-144.0 36-42-40, S 242.9 FT OF N 981.6 FT OF E 204.6 FT OF W 4560.1 FT A/K/A M-80	204.60	\$49.84	\$10,197.26	4.1705778	\$853.30	Initial Final Y Petition
9	EIKOV, MATTHEW 16153 68TH ST N LOXAHATCHEE, FL 33470-3469	00-40-42-36-00-000-145.0 36-42-40, S 242.9 FT OF N 981.6 FT OF E 204.6 FT OF W 4764.7 A/K/A M-53	204.60	\$49.84	\$10,197.26	4.1705778	\$853.30	Initial Final Y Petition
10	KOHL MICHAEL W & 16117 68TH ST N LOXAHATCHEE, FL 33470-3469	00-40-42-36-00-000-146.0 36-42-40, S 242.9 FT OF N 981.6 FT OF E 204.6 FT OF W 4969.3 FT A/K/A M-46	204.60	\$49.84	\$10,197.26	4.1705778	\$853.30	New Owner Initial Final Petition Prev Owner Initial Final Y Petition

Assessments which have not been paid in full within thirty days after completion of the subject improvements for which said assessment was made, will be charged interest at a rate of five and a half (5.5) percent per annum from the date of the acceptance of said improvement by Palm Beach County and shall be payable in twenty equal annual installments of principal and interest.



Palm Beach County
Water Utilities
SAS Coordinator

Assessment Roll - Final

68TH STREET NORTH
WATER MAIN EXTENSION

Project#: 16-079

FUND	AGENCY	ORG	COMMISSION DISTRICT	SECTION	TOWNSHIP	RANGE
			6 MELISSA MCKINLAY	36	42S	40E

No.	Homeowner	PCN/Legal Description	Feet	Cost/Per Foot	Total Assessment	Annual Cost/Per Foot	Annual Cost/Per Year	Notes
11	PHAM, CUONG & NGUYEN DUNG	00-40-42-36-00-000-152.0	204.60	\$49.84	\$10,197.26	4.1705778	\$853.30	
	4214 HOLLY DR PALM BEACH GARDENS, FL 33410-5504	36-42-40, S 272.9 FT OF N 4764.7 FT A/K/A M-54						Initial Final Y Petition
12	PAIGE, THOMAS R JR & KAREN L	00-40-42-36-00-000-153.0	204.60	\$49.84	\$10,197.26	4.1705778	\$853.30	
	16190 68TH ST N LOXAHATCHEE, FL 33470-3468	36-42-40, S 272.9 FT OF N 4560.1 FT A/K/A M-79						Initial Final Y Petition
13	SENISE FRANCESCO G	00-40-42-36-00-000-155.0	276.00	\$49.84	\$13,755.84	4.1705778	\$1,151.08	
	16266 68TH ST N LOXAHATCHEE, FL 33470-3468	36-42-40, S 272.9 FT OF N 4110.9 FT A/K/A M-95						New Owner Initial Final Petition Prev Owner Initial Final Y Petition
14	JUSTIN, ERIC & TRACEY	00-40-42-36-00-000-156.0	204.60	\$49.84	\$10,197.26	4.1705778	\$853.30	
	16304 68TH ST N LOXAHATCHEE, FL 33470-6011	36-42-40, S 272.9 FT OF N 3834.9 FT A/K/A M-124						Initial Final Y Petition
15	HARRIS, THOMAS	00-40-42-36-00-000-157.0	204.60	\$49.84	\$10,197.26	4.1705778	\$853.30	
	16342 68TH ST N LOXAHATCHEE, FL 33470-6011	36-42-40, S 272.9 FT OF N 3630.3 FT A/K/A M-133						Initial Final N Petition

Assessments which have not been paid in full within thirty days after completion of the subject improvements for which said assessment was made, will be charged interest at a rate of five and a half (5.5) percent per annum from the date of the acceptance of said improvement by Palm Beach County and shall be payable in twenty equal annual installments of principal and interest.



**Palm Beach County
Water Utilities
SAS Coordinator**

Assessment Roll - Final

68TH STREET NORTH
WATER MAIN EXTENSION

Project#: 16-079

FUND AGENCY ORG	COMMISSION DISTRICT	SECTION TOWNSHIP RANGE
	6 MELISSA MCKINLAY	36 42S 40E

No.	Homeowner	PCN/Legal Description	Feet	Cost/Per Foot	Total Assessment	Annual Cost/Per Foot	Annual Cost/Per Year	Notes								
16	HARRIS CLINTON M & 16378 68TH ST N LOXAHATCHEE, FL 33470-6011	00-40-42-36-00-000-158.0 36-42-40, S 272.9 FT OF N 1254.5 FT OF E 204.6 FT OF W 3425.7 FT A/K/A M-163	204.60	\$49.84	\$10,197.26	4.1705778	\$853.30	<table border="1"><tr><th>Initial</th><th>Final</th><th>Petition</th></tr><tr><td></td><td></td><td></td></tr></table>	Initial	Final	Petition					
Initial	Final	Petition														
17	BOLLINE, DANIEL & JOELLE 16456 68TH ST N LOXAHATCHEE, FL 33470-3333	00-40-42-36-00-000-159.0 36-42-40, S 272.9 FT OF N 1254.5 FT OF E 480.5 FT OF W 3221.1 FT A/K/A M-172 & M-200	480.50	\$49.84	\$23,948.12	4.1705778	\$2,003.96	<table border="1"><tr><th>Initial</th><th>Final</th><th>N</th><th>Petition</th></tr><tr><td></td><td></td><td></td><td></td></tr></table>	Initial	Final	N	Petition				
Initial	Final	N	Petition													
18	PEDROSA, AMADEU & LINDA 16230 68TH ST N LOXAHATCHEE, FL 33470-3468	00-40-42-36-00-000-167.0 36-42-40, S 272.9 FT OF N 1254.5 FT OF E 244.6 FT OF W 4355.5 FT A/K/A M-88	244.60	\$49.84	\$12,190.86	4.1705778	\$1,020.12	<table border="1"><tr><th>Initial</th><th>Final</th><th>N</th><th>Petition</th></tr><tr><td></td><td></td><td></td><td></td></tr></table>	Initial	Final	N	Petition				
Initial	Final	N	Petition													

Total: 4,252.80 Total: \$211,959.50

Note	Description/Totals	
1	MODIFIED ASSIGNED FRONTAGE	0
2	CONFIDENTIAL RECORD	0
3	UNITY OF TITLE	0
4	TAX MAP FRONTAGE	0
5	SCALED FRONTAGE	0
6	SURVEY	0
7	PAPA FRONTAGE	0
8	VERIFY LEGAL, OWNER CONTESTING TAXES	0

Petition Response Summary						
		Initial		Final		
Homeowners	18	Voted Yes	0	0%	9	50%
Properties	18	Voted No	0	0%	3	17%
Needed	10	No Response	18	100%	6	33%

Assessments which have not been paid in full within thirty days after completion of the subject improvements for which said assessment was made, will be charged interest at a rate of five and a half (5.5) percent per annum from the date of the acceptance of said improvement by Palm Beach County and shall be payable in twenty equal annual installments of principal and interest.

ATTACHMENT 4

RESOLUTION NO. R-2017- 0675

RESOLUTION OF THE BOARD OF COUNTY COMMISSIONERS OF PALM BEACH COUNTY, FLORIDA, CONFIRMING THE SPECIAL ASSESSMENT ROLL FOR THE 68th ST. NORTH WATER MAIN EXTENSION

WHEREAS, pursuant to Section 8 of Ordinance 2001-0010, the Board of County Commissioners held a public hearing at 9:30 A.M. on the 16th day of May, 2017, at the Commission Chambers of the Board of County Commissioners of Palm Beach County, Florida, so as to satisfy the requirements of Ordinance 2001-0010; and

WHEREAS, the Board of County Commissioners finds that the public notification and public hearing requirements of Ordinance 2001-0010 have been complied with; and

WHEREAS, the Board of County Commissioners intends to levy special assessment(s) upon certain properties located on 68th St. North for the purpose of funding a water main extension; and

WHEREAS, the total assessable cost of the improvement project shall not exceed \$266,176.86; and

WHEREAS, the method of apportioning the assessable costs of the improvement project among the parcels of property located within the boundaries of the improvement project shall be by the front-footage method; and

WHEREAS, the maximum dollar amount of each assessment unit shall be between \$11,525.12 to \$27,066.57 per parcel; and

WHEREAS, the Board of County Commissioners finds that each parcel listed in the Special Assessment Roll, which is attached hereto and incorporated herein as Exhibit "A", will obtain a special benefit, that is at least equal to the amount of special assessment made against each such parcel; and

NOW, THEREFORE, BE IT RESOLVED BY THE BOARD OF COUNTY COMMISSIONERS OF PALM BEACH COUNTY, FLORIDA, THAT:

1. The Special Assessment Roll for the 68th St. North Water Main Extension Project (WUD 16-079) is hereby approved and confirmed, and the special assessments set forth therein shall be collected in accordance with the provisions of the Uniform Assessment Collection Act and Ordinance 2001-0010.

2. The special assessment(s) set forth in the Special Assessment Roll shall constitute a lien(s) against the assessed property equal in rank and dignity with the liens of all state, county, district or municipal taxes and other non-ad valorem assessments. Except as otherwise provided by law, such lien(s) shall be superior in dignity to all other liens, titles and claims, until paid.

3. Any and all special assessments made pursuant to this Resolution, which have not been paid in full within thirty (30) days after completion of the improvement project for which the assessments were made, shall be subject to interest at the rate of five and one half percent (5 ½ %) per year and shall be payable in twenty (20) equal installments of principal and interest.

4. If any special assessment made under this Resolution shall be either in whole or in part vacated or set aside by the judgment of any court, or if the Board of County Commissioners shall be satisfied that any such assessment is so irregular or defective that same cannot be enforced or collected, or if the Board shall have omitted to make such assessment when it might have done so, the Board of County Commissioners shall take all necessary steps to cause a new assessment to be made for any improvement and against any property specially benefited by such improvement, following the provisions of Ordinance 2001-0010. In case the second assessment shall also be invalid, the Board of County Commissioners may obtain and make other assessments until a valid assessment is made.

5. The Clerk of this Board shall cause this Resolution to be recorded in the Official Records of Palm Beach County, Florida, in the Office of the Clerk of the Circuit Court.

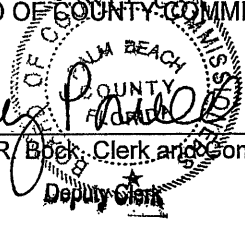
The foregoing Resolution was offered by Commissioner Valeche who moved its adoption. The motion was seconded by Commissioner Berger and upon being put to a vote; the vote was as follows:

Commissioner Paulette Burdick, Mayor	Aye
Commissioner Melissa McKinlay, Vice Mayor	Aye
Commissioner Hal Valeche	Aye
Commissioner Dave Kerner	Absent
Commissioner Steven L. Abrams	Aye
Commissioner Mary Lou Berger	Aye
Commissioner Mack Bernard	Aye

The Mayor thereupon declared the Resolution duly passed and adopted this 16th day of May, 2017.

PALM BEACH COUNTY, FLORIDA,
BY ITS BOARD OF COUNTY COMMISSIONERS

By: Sharon R. Book
Sharon R. Book, Clerk and Comptroller



APPROVED AS TO FORM AND
LEGAL SUFFICIENCY

By: [Signature]

ATTACHMENT 5

FINAL REPORT OF COST
68TH STREET NORTH
WATER MAIN EXTENSION
SPECIAL ASSESSMENT PROJECT
PROJECT NO. WUD 16-079
COMMISSION DISTRICT 6
SECTION 36, TOWNSHIP 42 SOUTH, RANGE 40 EAST
FUND 4011 DEPT. 721 ORG. W031 OBJECT 6543

	<u>ESTIMATED</u>	<u>ACTUAL</u>	<u>DIFFERENCE</u>
Construction Bid Price	\$199,512.45	\$189,695.97	(\$9,816.48)
Construction Contingency (10%) (1)	\$19,951.25	\$0.00	(\$19,951.25)
Inspection Fee (4%) (2)	\$7,980.50	\$7,587.84	(\$392.66)
Engineering Fee (3)	\$28,746.20	\$28,746.20	\$0.00
Administration Fee (5%) (4)	\$9,975.62	\$9,484.80	(\$490.82)
Administrative Adjustment (5)	\$10.84	-\$3.83	(\$14.67)
Total Project Cost	\$266,176.86	\$235,510.98	(\$30,665.88)
Financial Support Discount	\$26,616.60	\$23,551.48	(\$3,065.12)
Total Assessable Cost	\$239,560.26	\$211,959.50	(\$27,600.76)
Total Frontage	4,252.80	4,252.80	4,252.80
Cost Per Property	\$56.33	\$49.84	(\$6.49)

Notes:

1. Construction Contingency is 10% of the Construction Cost
2. Inspection fee is 4% of the Construction Cost.
3. Engineering Fee of \$28,746.20 is for the cost of survey, design and permitting from Holtz Consulting Engineer.
4. Administrative Fee is 5% of the Construction Cost.
5. Administrative Adjustment is used to round the cost per frontage to the nearest cent.

ATTACHMENT 6

FINAL AUTHORIZATION SUMMARY

Submitted by: WATER UTILITIES DEPARTMENT (Engineering Division)

Final Acceptance and Final Payment in the amount of \$18,969.59 to Johnson-Davis Inc., for the construction of 2,255 ft of 8" PVC water main along 68th St North, No. WUD16-079, Work Authorization No. 9, Account No. 4011-721-W031-6543

District 6

SUMMARY: On May 16, 2017 the Board of County Commissioners approved Work Authorization No 9, WUD 16-079, (R2017-0676) to the Pipeline Continuing Construction Contract (R2016-0902) with Johnson-Davis for construction of 2,255 ft of 8" PVC water main along 68th Street North. The final payment includes the final quantity adjustment in the amount of (\$9,816.48).

SBE PARTICIPATION SUMMARY:

Master Contract SBE Participation Goal:	3.28%
This Work Authorization SBE Quoted Goal:	13.59%
Actual Authorization SBE Achieved:	15.20%
Master Contract SBE Cumulative Achieved:	20.18%

Background and Justification: The Water Utilities Department compiled the documentation necessary for Final Acceptance and Final Payment of the contract with Johnson-Davis.

\$	199,512.45	- Original Authorization Amount
\$	(9,816.48)	- Final Quantity Adjustment
\$	189,695.97	- Final Authorization Amount
\$	<u>170,726.38</u>	- Previous Payments
\$	18,969.59	- Final Payment

Attachments for Committee:

1. Project Location Map.
2. Payment Application No.4, Final.
3. Final Warranty of Title.
4. SBE Construction Activity Report, Payment Certifications and Approval.
5. Contractor's Certification of Final Completion.
6. Consent of Surety to Final Payment.
7. Work Authorization History

Recommended By: Kristin Blair 11-20-2017
 Director of Engineering Division Date

Recommended By: Jim Stebbins 11-21-17
 Director of Water Utilities Department Date

APPROVED BY: [Signature] 11/29/17
 Contract Review Committee Date

APPROVED BY THE CONTRACT REVIEW COMMITTEE