

**PALM BEACH COUNTY
BOARD OF COUNTY COMMISSIONERS**

WORKSHOP SUMMARY

Meeting Date: April 24, 2018

Department: Public Safety Department

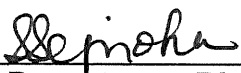

I. EXECUTIVE BRIEF

Title: Emergency Management Disaster Preparedness Briefing

Summary: The purpose of this workshop is to provide a disaster preparedness briefing for the Board of County Commissioners and an update on accomplishments and improvements to disaster preparedness since Hurricanes Matthew and Irma. Significant changes were made to our preparedness efforts and response for the sheltering program such as enhanced training, additional tools and resources, enhanced on-site security strategies, improved communications, and the development of a Shelter Field Guide for shelter worker roles and responsibilities. Changes to other areas include improved automation of the Emergency Information Center, improved/focused public education campaign, and improved damage assessment processes. While this workshop's focus is on the last two hurricane seasons, the Public Safety Department's Division of Emergency Management plans, prepares, and exercises for twelve core hazards. The Division of Emergency Management relies on all County departments as well as the Board of County Commissioners and numerous local state, federal, and non-profit volunteer agencies to provide support and resources to help Palm Beach County plan, respond, and recover from disasters. Countywide (LDC)

Background and Policy Issues: Pursuant to Florida Statutes Chapter 252, it is the county's responsibility to be prepared to respond to, and recover from, any hazard that threatens the lives and property of residents and visitors of Palm Beach County. Our citizens rely on us for emergency shelters as well as other countywide disaster functions that are a critical component of our emergency response system.

Attachments: PowerPoint Presentation

Recommended by:		<u>4/16/18</u>
	Department Director	Date
Approved By:		<u>4/23/18</u>
	Deputy County Administrator	Date

II. FISCAL IMPACT ANALYSIS

A. Five Year Summary of Fiscal Impact:

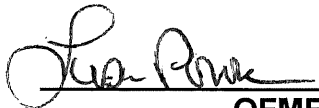
Fiscal Years	2018	2019	2020	2021	2022
Capital Expenditures					
Operating Costs					
External Revenues					
Program Income (County)					
In-Kind Match (County)					
NET FISCAL IMPACT	*				
No. ADDITIONAL FTE POSITIONS (Cumulative)					

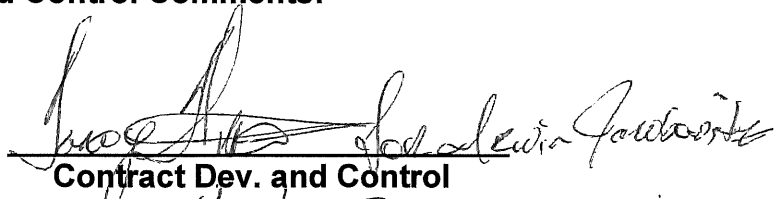
Is Item Included In Current Budget? Yes No
Budget Account No.: Fund Department Unit
Object Reporting Category

- B. Recommended Sources of Funds/Summary of Fiscal Impact:
There is no fiscal impact associated with this workshop item.
- C. Departmental Fiscal Review:

III. REVIEW COMMENTS

A. OFMB Fiscal and/or Contract Dev. and Control Comments:

 4/19/18
OFMB 4/19/18

 4/20/18 TW
Contract Dev. and Control

B. Legal Sufficiency:

 4/20/18
Assistant County Attorney

C. Other Department Review:

Department Director

April 24, 2018

Board of County Commissioners Workshop

EMERGENCY MANAGEMENT DISASTER PREPAREDNESS BRIEFING



Agenda

- Our Vision
- EOC Organization
- Core Hazards
- BCC Role
- Hurricane Matthew
- Hurricane Irma
- After-Action Process
- Accomplishments/Improvements
- Disaster Pay Policy



Division of Emergency Management



Our Vision:

To be a world class emergency management agency keeping our community safe and resilient by working together with our partners and the public as a team.





Board of County Commissioners
 PBC Constitutional Officers
 15th Judicial Circuit
 PBC School Board
 League of Cities
 Legislative Affairs
 PBC Convention Bureau
 Medical Examiner
 Military support/FLNG

Executive Policy Group
 County Administrator – Incident Commander
 Mayor, Board of County Commissioners
 Public Safety Dept. Director
 Palm Beach County Attorney

Unified Command
 Emergency Management Director
 Palm Beach County Sheriff
 Fire Chief, Palm Beach County Fire-Rescue
 Palm Beach Co. Health Department Director

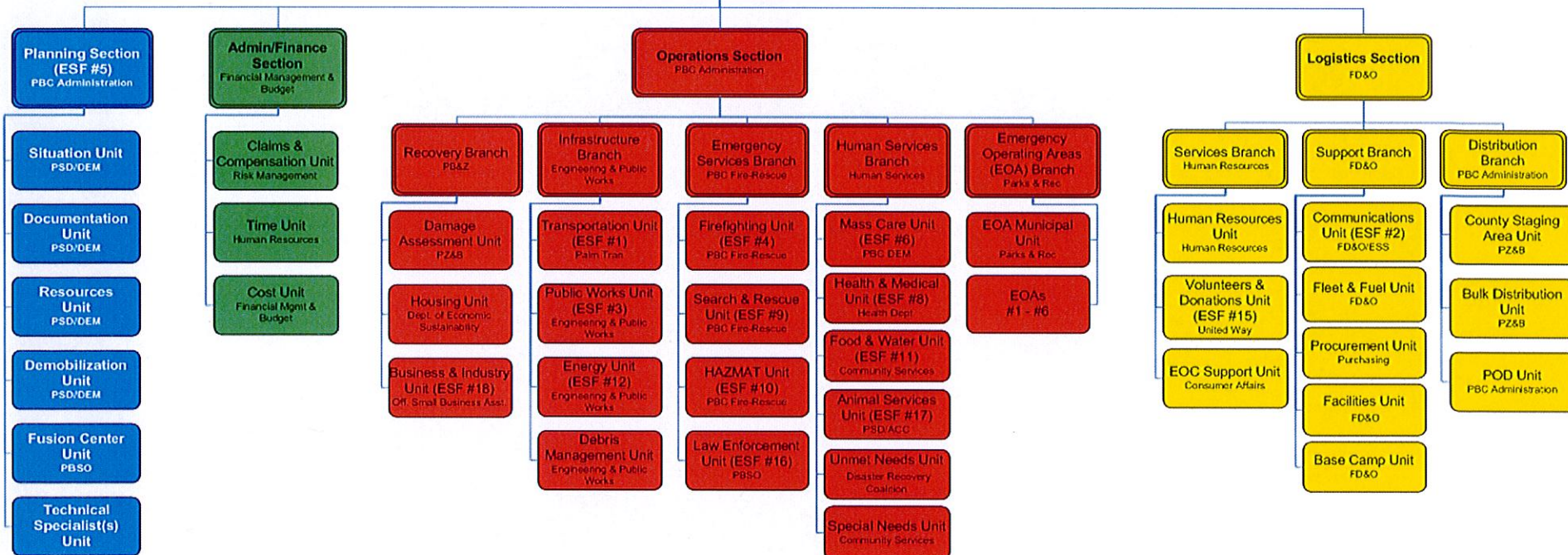
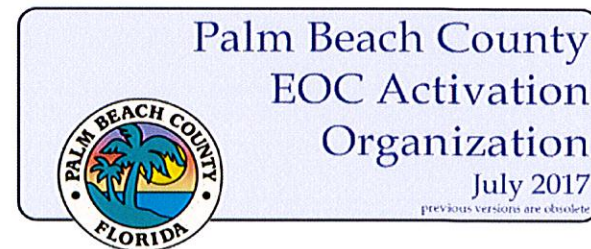
Liaison Officer
 PBC Administration

Public Information Unit (ESF #14)
 Public Affairs

Emergency Information Unit (EIC)
 Justice Services

Safety Officer
 Risk Management

Information/Technology Support
 ISS



12 Core Hazards

- Flooding
- Wind Events
- Severe Weather
- Fire
- Agricultural Pests & Diseases
- Dike Failure
- Communicable Diseases
- Domestic Security
- Workplace/School Violence
- Technological Hazards
- Hazardous Materials
- Radiological Threats
- Transportation Accidents
- Mass Migration



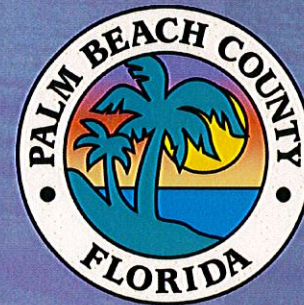
Responsibilities of the BCC

Florida Statute Chapter 252:

- ◉ Full-time EM Director
- ◉ Develop a CEMP
- ◉ Jurisdiction of EM functions is countywide
- ◉ PBCSB assists with sheltering
- ◉ Review of healthcare CEMPs



FEMA



Role of BCC

Reinforce local EM officials actions:

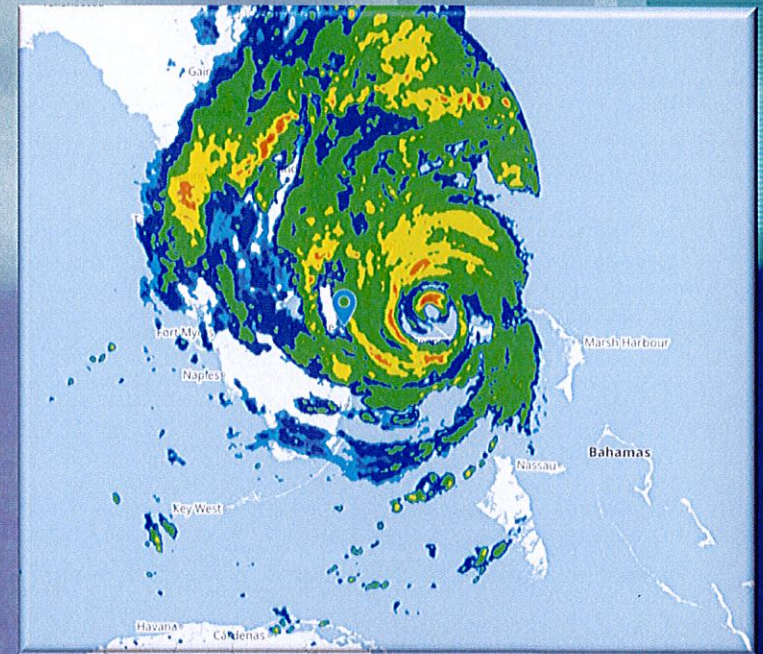
- Assist with federal declarations;
- Consistent messages:
 - Reinforce protective actions;
 - Reinforce public information.
- Help disseminate important messages



Communicate with the EOC Intergovernmental Desk

Hurricane Matthew

- Developed September 22, 2016
- Category 5 storm at Aruba
- Parallel east coast of Florida for 36 hours
- Palm Beach County only 63 miles away
- We "...dodged a bullet"



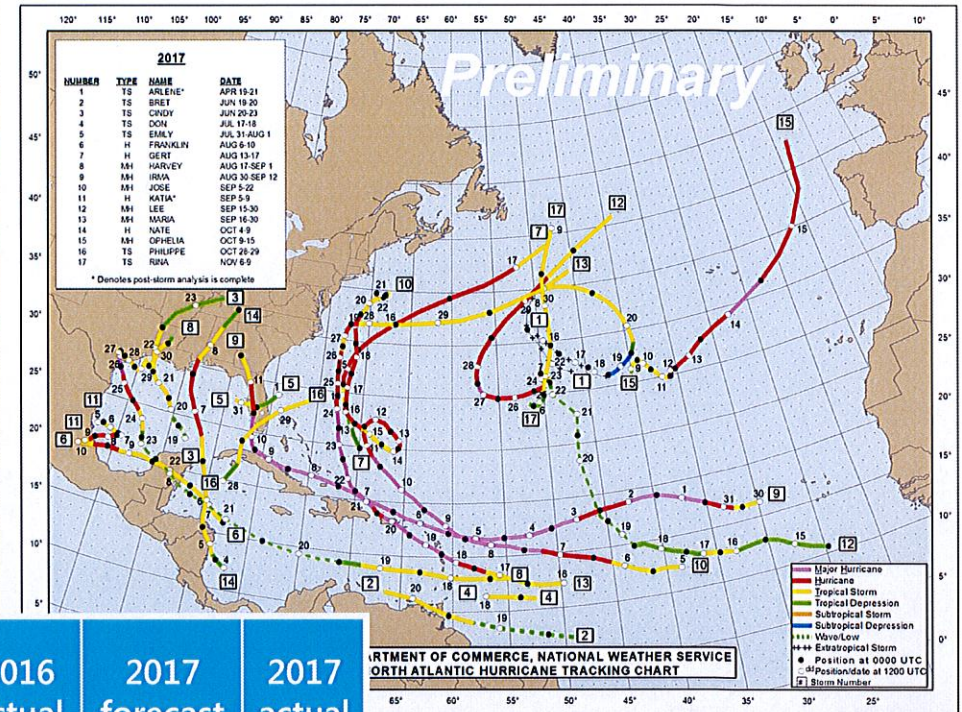
Hurricane Matthew by the numbers

- EOC activated for 4 days
- Evacuated Zones A & B
- Used mass notification system to notify > 39,000 homes
- Opened 14 shelters:
 - 7,100 in general population
 - 184 in Special Needs Unit
 - 198 pets in Pet Friendly Shelter
- Damage est. \$7.7 million



2017 Season

- Above average year
- Forecasted to be average

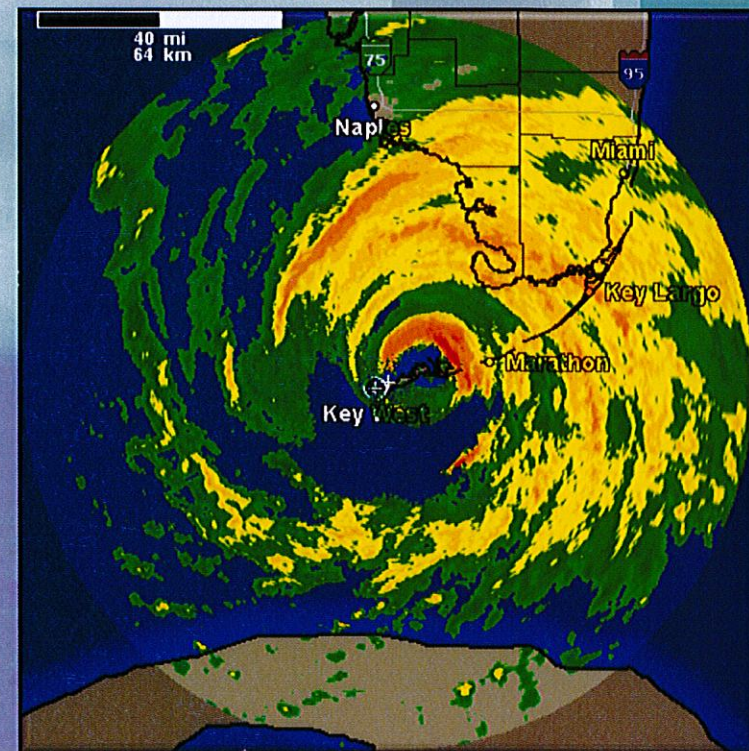


	Avg.	2013 actual	2014 actual	2015 actual	2016 actual	2017 forecast	2017 actual
Named	12	13	8	11	15	13	17
Hurricanes	6	2	6	4	7	6	10
Intense (≥ 3)	3	0	2	2	4	2	6



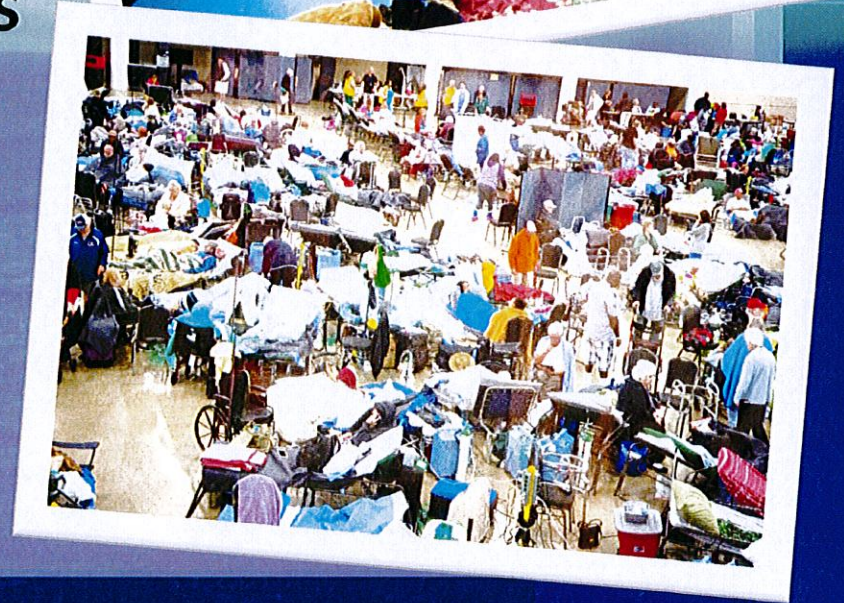
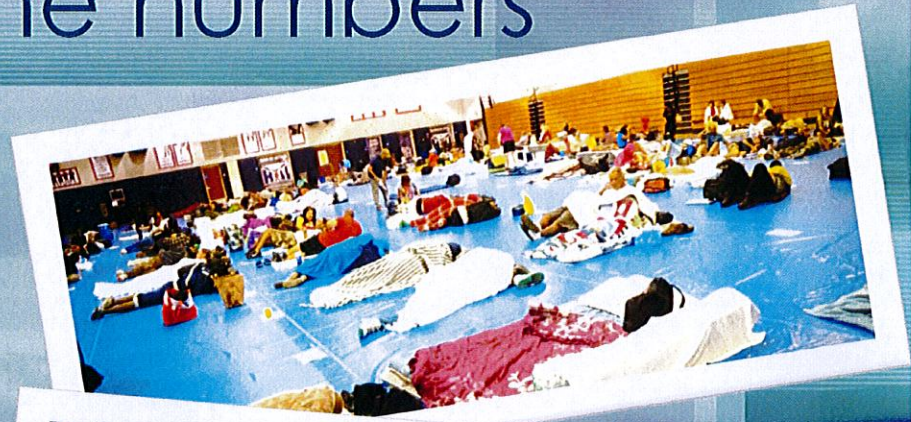
Hurricane Irma

- Strongest observed in the Atlantic since *Wilma* in 2005
- Made first FL landfall on Cudjoe Key, ≈ 20 miles north of Key West, on Sunday, Sept. 10, 2017, at 9:10 a.m. as a Cat 4 storm; sustained winds of ≈ 130 mph
- PBC sustained TSFW at 67 mph; gusts to 91 mph
- 8 to 9 inches of rainfall in PBC



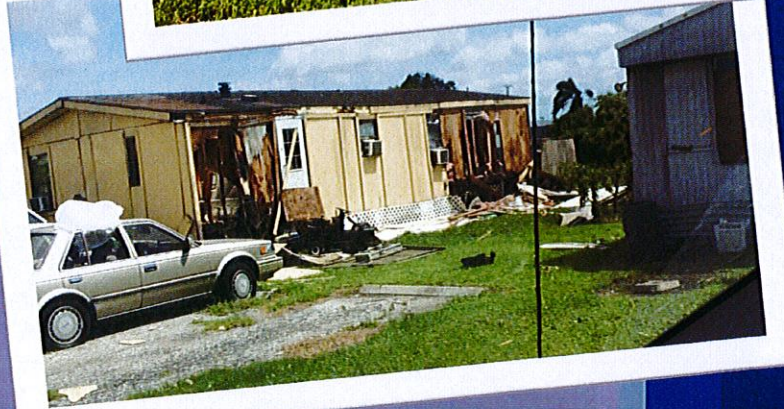
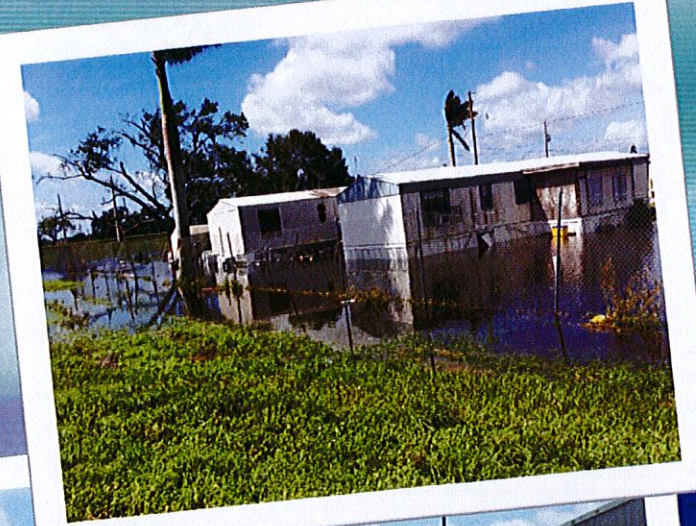
Hurricane Irma by the numbers

- ◉ Sheltered 16,839 people
- ◉ 13 shelters
- ◉ 545 Special Needs clients
- ◉ 326 Pet Friendly
- ◉ 682,000 without power
- ◉ 840 traffic signals
- ◉ 21,665 calls to EIC



Hurricane Irma by the numbers

FEMA Work Category	Reimbursement requested
Cat A: Debris removal	\$2,660,568
Cat B: Emergency measures	\$25,161,427
Cat C: Road Systems	\$4,170
Cat D: Water Facilities	\$56,994
Cat E: Buildings & Equipment	\$1,786,620
Cat F: Utilities	\$197,439
Cat G: Parks, Beaches	\$12,470,110
TOTAL	\$43,337,328



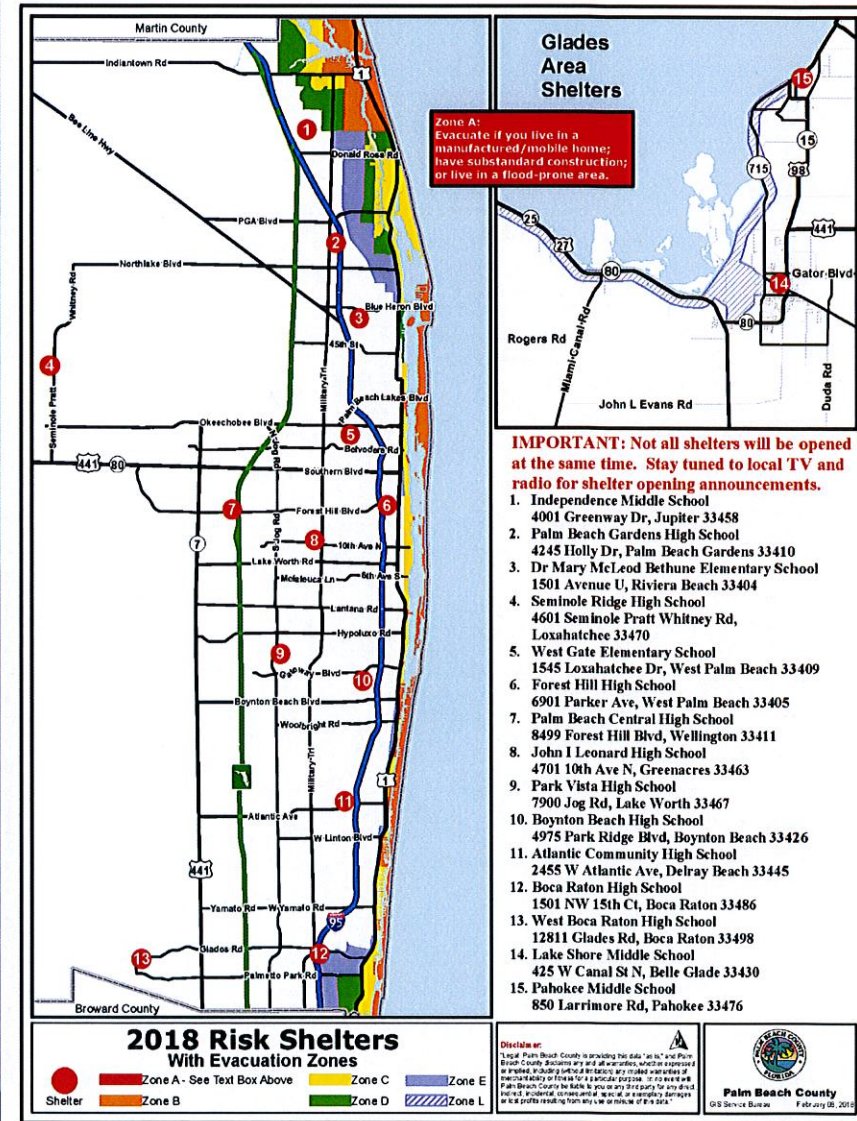
Hurricane Irma Firsts

- First time evacuating western communities
- Largest shelter operations
- Utilized county employees in shelters
- Feeding contract
- Use of RIAT



Evacuation Firsts

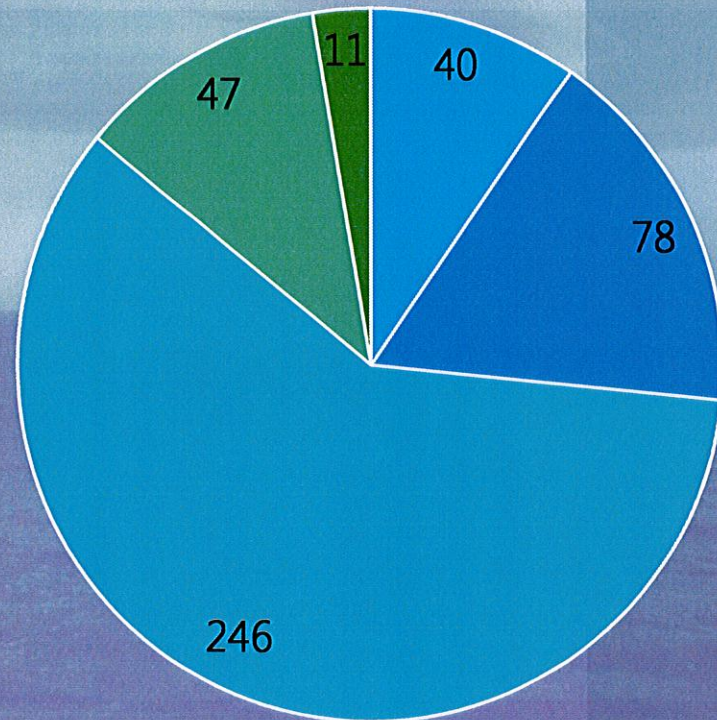
- 2 of the largest evacuations since 2005;
- Two → five (5) zones
 - Evacuated zones A & B;
 - Voluntary C
 - ≈300,000 people
 - Evacuated all Lake O municipalities
- NHC surge models
 - Saved evacuation of ≈63K people
- AlertPBC was successful



After Action Process

422 AAR Items

- Queried all responders for 'opportunities to improve'
- 84% are complete
- Some are policy issues, require regulation or contractual changes, etc.

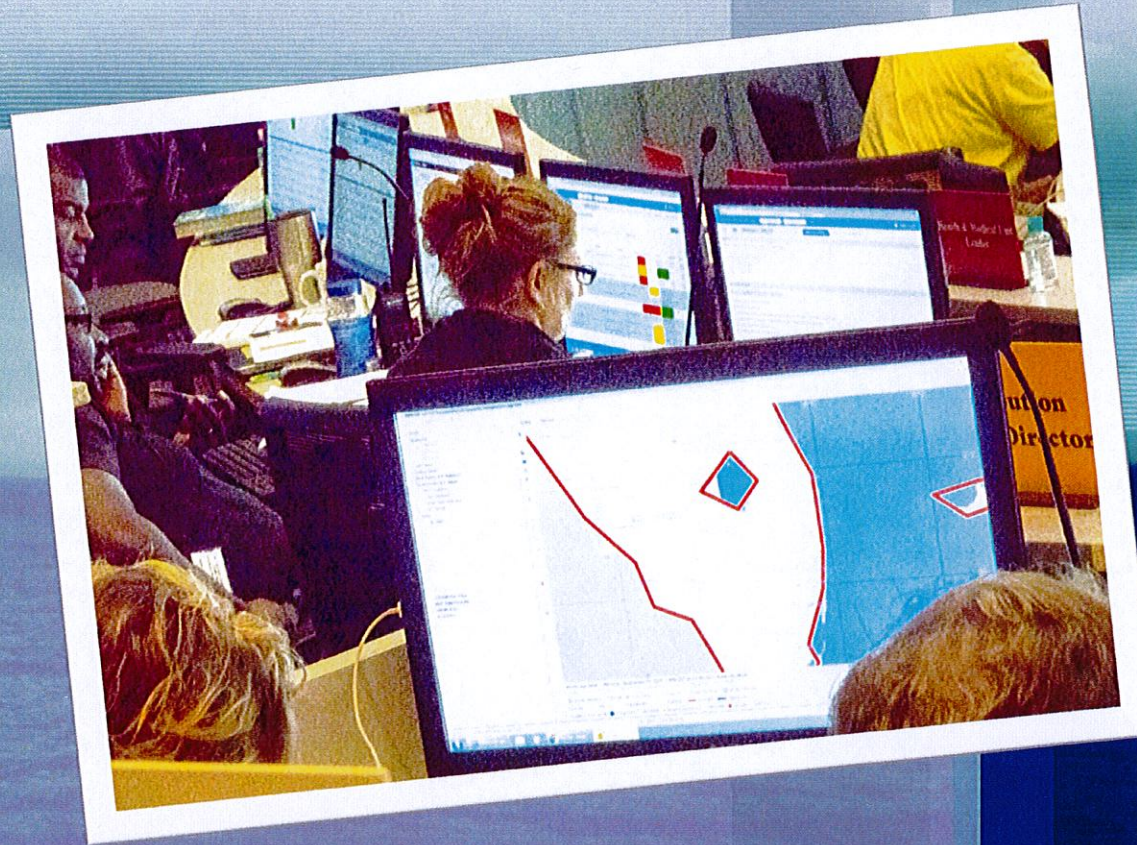


■ EPG/Command ■ Logistics ■ Operations ■ Planning ■ Recovery



EDRP

- F.S. Chapter 252
- Employee Disaster Response Program (EDRP)
- All-hazards
- Clear assignments
- Train all employees



Accomplishments/Improvements

Shelter Focus Areas

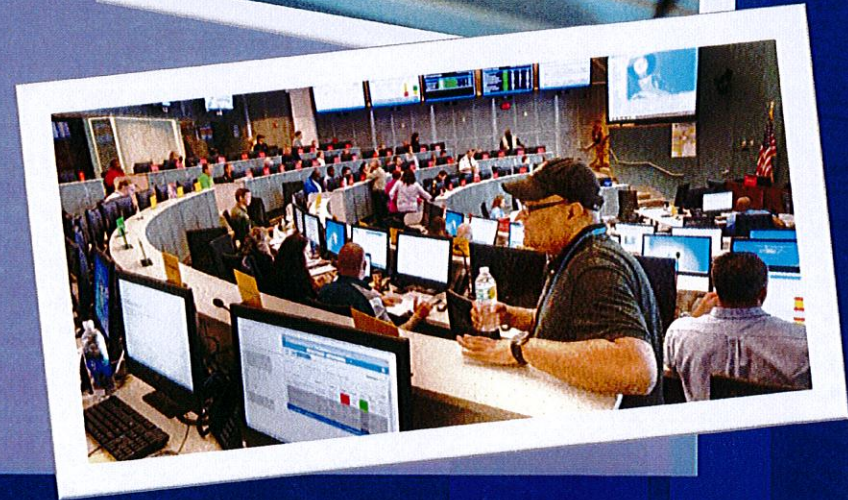
- Enhanced training
- Clearer roles/functions
- More TVs in shelters
- Translation Services
- Wrist bands at check-in
- Vests for improved identification
- Improved security (PBCSB & PBSO)
- Radios for intra- and inter-shelter communication
- Additional healthcare staff



Accomplishments/Improvements

Other Areas:

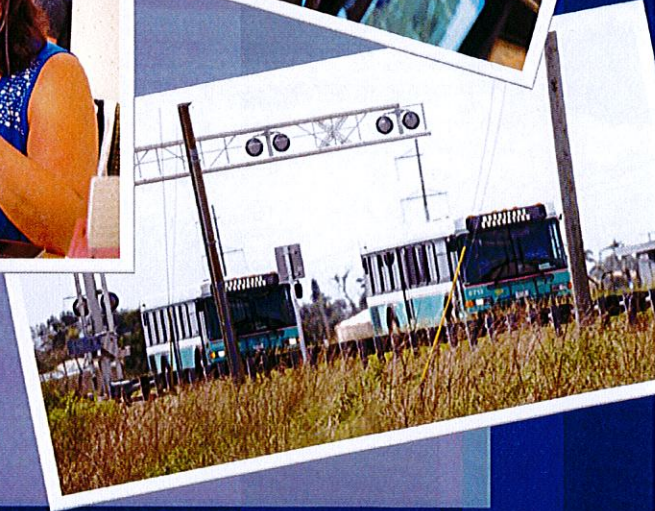
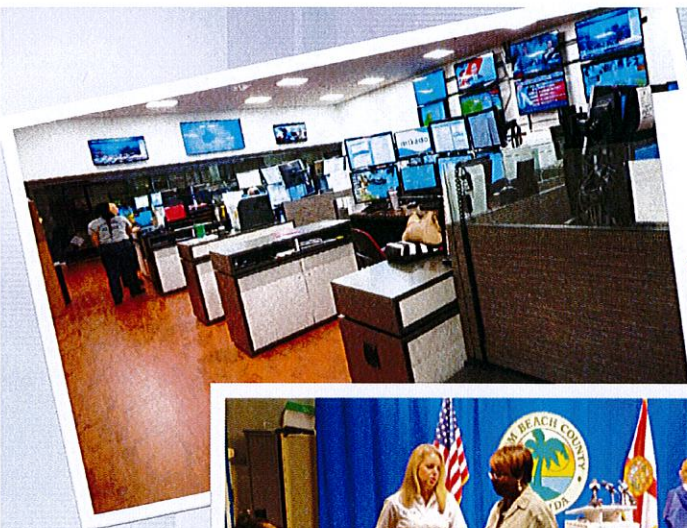
- Improved automation of the EIC
- Improved/focused public education campaign
 - Renamed Lake O evacuation zone to "Zone L"
- Healthcare facility preparedness
- Improved damage assessment processes



Disaster Pay Policy

- Procedures for payment of wages
- Office closures for disasters/emergencies
- Disaster Assigned Employees
- Non-essential employees





Thank You!

