

II. FISCAL IMPACT ANALYSIS

A. Five Year Summary of Fiscal Impact:

Fiscal Years	2019	2020	2021	2022	2023
Capital Expenditures	\$ 188,160	-0-	-0-	-0-	-0-
Operating Costs	-0-	-0-	-0-	-0-	-0-
External Revenues	-0-	-0-	-0-	-0-	-0-
Program Income (County)	-0-	-0-	-0-	-0-	-0-
In-Kind Match (County)	-0-	-0-	-0-	-0-	-0-
NET FISCAL IMPACT	\$ 188,160	-0-	-0-	-0-	-0-
# ADDITIONAL FTE					
POSITIONS (Cumulative)					

Is Item Included in Current Budget? Yes X No
 Does this item include the use of federal funds? Yes No X

Budget Account No:
 Fund 3504 Dept 361 Unit 1874 Object 6505

Recommended Sources of Funds/Summary of Fiscal Impact:

Road Impact Fee - Zone 4 Fund
 Woolbright Road/Seacrest Boulevard Intersection Imp.

New Task Authorization	
Basic Services	\$ 88,767.80
Reimbursable Expenses	\$ 23,257.28
Optional Services	\$ 32,704.85
	\$ 144,729.93
Staff Charges	
Roadway Production	\$ 21,710.00
Right of Way	\$ 7,240.00
Engineering Services	\$ 7,240.00
Traffic	\$ 7,240.00
Fiscal Impact	\$ 188,159.93

C. Departmental Fiscal Review: _____

Alicia Kovalainen

III. REVIEW COMMENTS

A. OFMB Fiscal and/or Contract Dev. and Control Comments:

[Signature] 7/18/19

 OFMB 7/1

[Signature] 7/18/19

 Contract Dev. and Control 7/18/19

B. Approved as to Form and Legal Sufficiency:

[Signature] 7/22/19

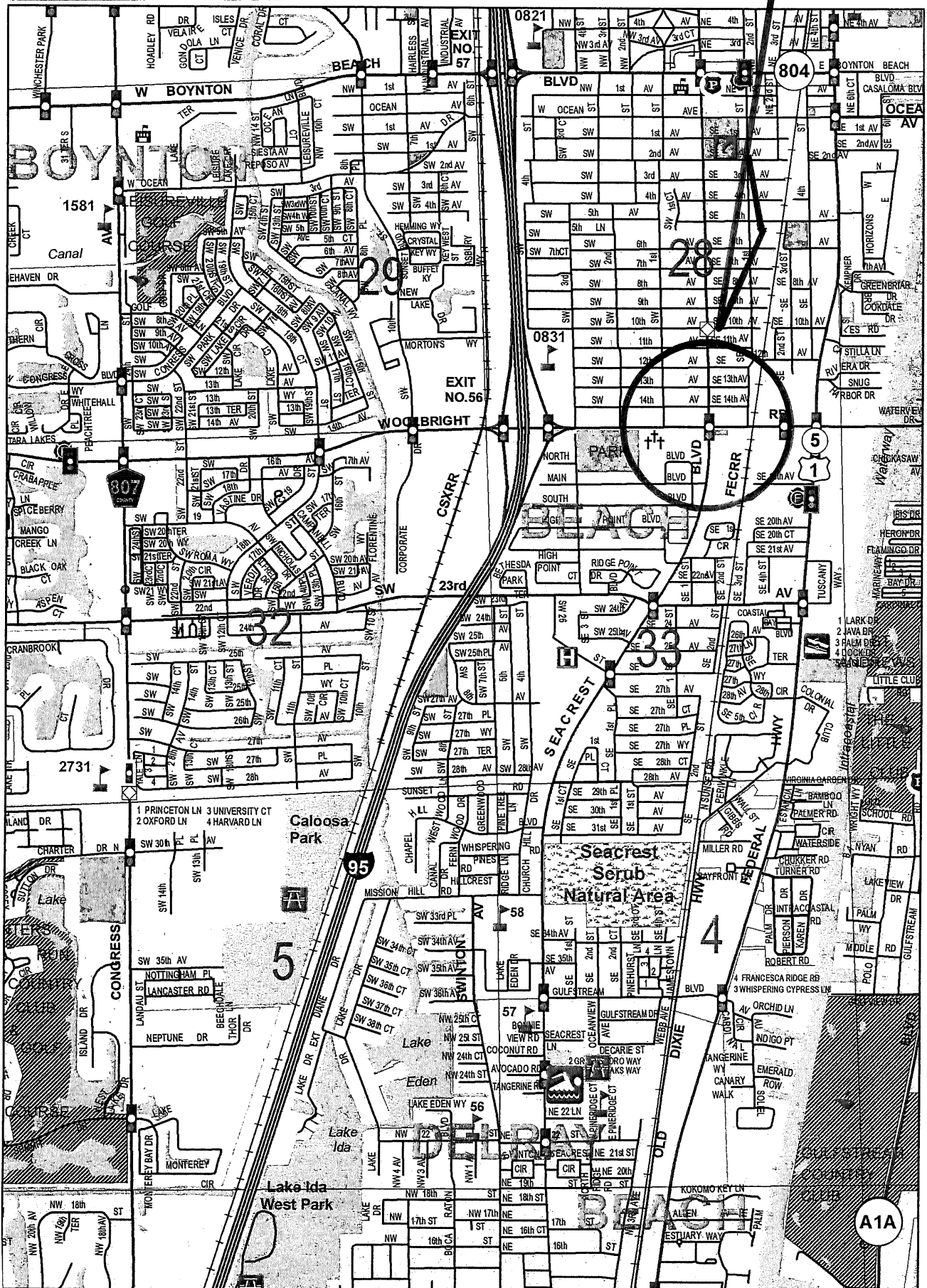
 Assistant County Attorney

C. Other Department Review:

 Department Director

This summary is not to be used as a basis for payment.

Woolbright Road and Seacrest Boulevard Intersection Improvements Palm Beach County Project No. 2018106



LOCATION SKETCH

Attachment
2

**WORK TASK ORDER TO ANNUAL CONTRACT BETWEEN
PALM BEACH COUNTY AND
BOLTON PEREZ & ASSOCIATES, INC.
FOR PROFESSIONAL ENGINEERING SERVICES ON
WOOLBRIGHT ROAD AND SEACREST BOULEVARD
INTERSECTION IMPROVEMENTS
PROJECT NO.: 2018106
PALM BEACH COUNTY, FLORIDA**

This Work Task Order to the Intersection Improvements Annual Contract (R2017-0778), herein after referred to as the ANNUAL CONTRACT, is made and entered into the _____ day of _____, 2019, by and between Palm Beach County, a Political Subdivision of the State of Florida, by and through its Board of Commissioners, hereinafter referred to as the COUNTY, and BOLTON PEREZ & ASSOCIATES, INC., a FLORIDA PROFIT CORPORATION authorized to do business in the State of Florida, hereinafter referred to as the CONSULTANT, whose Federal I.D. is 65-0789352. The COUNTY intends to improve intersection improvements on Woolbright Road and Seacrest Boulevard Intersection Improvements, Project No. 2018106, hereinafter referred to as the PROJECT.

WITNESSETH

WHEREAS, the COUNTY and CONSULTANT entered into the ANNUAL CONTRACT on a work task order basis on June 20, 2017 (R2017-0778); and

WHEREAS, the First Amendment dated May 1, 2018 (R2018-0634) extended the expiration date of the CONTRACT from June 19, 2018 to June 19, 2019 and added Section 22 – Additional Reporting. The Second Amendment dated January 15, 2019 (R2019-0020) amended Section 7.1 – Termination, Section 9 – Criminal History Records Check, Section 12 – Commercial Non-Discrimination, and Section 20 – Scrutinized Companies. The Third Amendment dated June 4, 2019 (R2019-0711) extended the expiration date of the CONTRACT from June 19, 2019 to June 19, 2020, modified the fee schedule, replaced Section 7.8 - Subcontracting, Section 7.13 – Access and Audits, Section 12 – Commercial Non-Discrimination and added Section 23 – VSS Registration Required; and acknowledged Network Engineering Services, Inc. d/b/a Bolton Perez and Associates changed their company name to Bolton Perez & Associates, Inc.; and

WHEREAS, the COUNTY desires the CONSULTANT to perform services for the PROJECT; and

WHEREAS, the CONSULTANT agrees to prepare the design plans and construction bid documents, including related documents required for the PROJECT; and

WHEREAS, the following fee has been negotiated and found to be reasonable compensation for these professional services to be performed by the CONSULTANT:

Basic Services in a lump sum fee of \$88,767.80
Reimbursable Expenses capped at \$23,257.28
Optional Services capped at \$32,704.85
Totaling **\$144,729.93**

NOW, THEREFORE, THIS INDENTURE WITNESSETH: That for and in consideration of the mutual benefits to flow from each to the other, the parties hereto agree as follows:

The above recitals are true and correct and are incorporated herein.

The following Exhibits are attached to and made a part of this Work Task Order.

Exhibit A - Scope of Work including Work Schedule

Exhibit B - Fee Schedule

Exhibit C – EBO Schedules 1 and 2

The COUNTY agrees to pay the CONSULTANT a fee of One Hundred Forty-Four Thousand Seven Hundred Twenty-Nine Dollars and Ninety-Three Cents (\$144,729.93).

This Work Task Order is subject to the ANNUAL CONTRACT, as amended, which shall remain in full force and effect.

REMAINDER OF PAGE LEFT BLANK INTENTIONALLY

IN WITNESS WHEREOF, the Board of County Commissioners of Palm Beach County, Florida has made and executed this Work Task Order for **Woolbright Road and Seacrest Boulevard Intersection Improvements** Project Number **2018106** on behalf of the COUNTY and CONSULTANT has hereunto set its hand the day and year above written.

OWNER:

Palm Beach County, a Political Subdivision of the State of Florida, by and through its Board of County Commissioners:

BY: _____
Mack Bernard, Mayor

S E A L

ATTEST:

Sharon R. Bock, Clerk & Comptroller
Circuit Court

BY: _____
(Deputy Clerk)

APPROVED AS TO TERMS AND CONDITIONS:


BY: *7/24* *Ornelis A. Fernandez*

APPROVED AS TO FORM & LEGAL SUFFICIENCY:

BY: *404* _____
Assistant County Attorney

CONSULTANT:

Bolton Perez & Associates, Inc.

BY: *Joaquin Perez*
Joaquin Perez, P.E., President
CORPORATE SEAL


ATTEST WITNESS:

BY: *Jennifer Bolton*
(Print Name)

Jennifer Bolton
(Signature)

BY: *Vivian Perez*
(Print Name)

Vivian Perez
(Signature)

M.K. 5-8-19
AK
bpa

SCOPE OF SERVICES

PBC Project Number 2018106 Woolbright Rd. and Seacrest Blvd. Intersection Improvements

Bolton Perez and Associates, Inc. will provide Palm Beach County the required engineering and surveying services to develop final contract documents, including plans, specifications, quantities and construction cost estimates for the Woolbright Rd. and Seacrest Blvd. Intersection Improvements as follows:

- Provide additional an EB to SB right turn lane by implementing the following:
 - Re-align and shift the through lanes to the north side to create the required space for the right turn lane.
 - All required right-of-way acquisition will be from the north side properties in order to avoid impacts to the Boynton Beach Mausoleum.
 - Mill and resurface the entire project limits, including the intersection.
 - Mill and resurface Seacrest Blvd. in order to re-configure the lane assignments to provide NB to EB right turn lane.
 - Address and restore all impacts to the roadway facility associated with the implementation of the proposed improvements.
 - Provide new pavement markings for the entire project limits.
 - Sign replacements will only apply if impacted by the proposed improvements.
 - Utility coordination.
 - Permit coordination.
 - Land and engineering surveying, as required to design the proposed improvements.
- Approximate project limits are from SW 2nd Street to SE 1st Street.

* OPTIONAL SERVICES

- Replace the existing span wire mounted traffic signal with a new mast arm mounted system.
- Geotechnical investigation (soil borings) for signal mast arm pole placement

Project Schedule
 Woolbright Road and Seacrest Blvd Intersection Improvements
 PBC Project No. 2018106

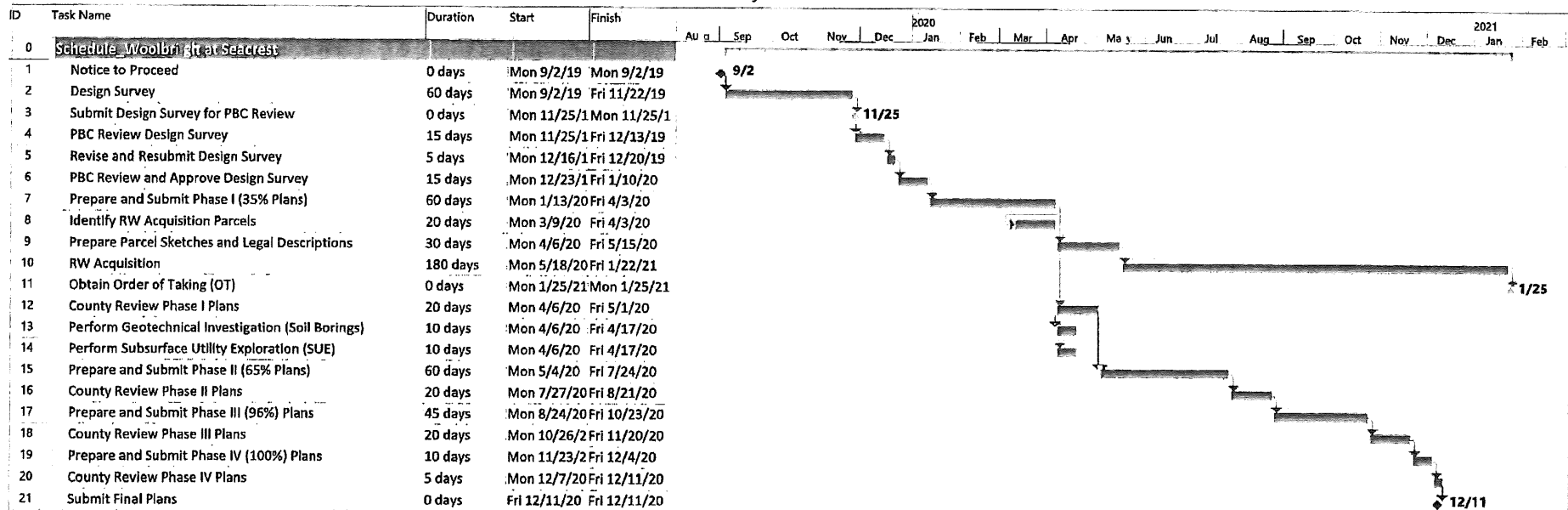


Exhibit "A" - Page 2 of 2

ESTIMATE OF WORK EFFORT AND COST - PRIME CONSULTANT

Name of Project: Woolbright Rd. at Seacrest Blvd. Intersection Expansion
 County: Palm Beach
 Palm Beach County Project Number: 2018106
 FAP No.: NA

Woolbright Rd. at Seacrest Blvd. Intersection Expansion
 Palm Beach
 2018106
 NA

Consultant Name: Bolton Perez and Associates
 Date: rev 3/5/19
 Estimator: Luis Costa, PE

Staff Classification	Total Staff Hours	Project Manager	Chief Engineer	Senior Engineer	Senior Project Engineer	Engineer	Engineer Intern	Designer	CADD / Technician	SH	Salary	Average
		By Activity	By Activity	By Activity	By Activity	By Activity	By Activity	By Activity	By Activity	By Activity	By Activity	By Activity
4. Roadway Analysis	216	22	11	22	43	43	42	22	11	216	\$26,208.18	\$121.33
5. Roadway Plans	173	17	9	17	35	35	34	17	9	173	\$20,912.82	\$120.88
6a. Drainage Analysis	61	7	3	6	12	12	12	6	3	61	\$7,452.12	\$122.17
6b. Drainage Plans	65	7	3	7	13	13	12	7	3	65	\$7,940.90	\$122.17
7. Utilities	54	5	3	5	11	11	11	5	3	54	\$6,485.96	\$120.11
8. Environmental Permits, Compliance & Clearances	24	3	1	2	5	5	5	2	1	24	\$2,923.42	\$121.81
19. Signing & Pavement Marking Analysis	89	9	4	9	18	18	18	9	4	89	\$10,743.20	\$120.71
20. Signing & Pavement Marking Plans	50	5	3	5	10	10	9	5	3	50	\$6,101.20	\$122.02
Total Staff Hours	732	75	37	73	147	147	143	73	37	732		
Total Staff Cost		\$14,962.50	\$8,225.10	\$12,483.00	\$19,271.70	\$14,244.30	\$11,208.34	\$6,553.94	\$1,818.92		\$88,767.80	\$121.27

Check = \$88,767.80

Basic Services (LS) Total: ✓ \$88,767.80
 Reimbursable Services (LA):
 Brown and Phillips, Inc. Subconsultant: ✓ \$23,257.28
 Reimbursable Services (LA) Total: ✓ \$23,257.28
 Optional Services:
 GCME, Inc. Subconsultant: ✓ \$8,991.87
 Bolton Perez & Associates, Inc. ✓ \$23,712.98
 Optional Services Total: ✓ \$32,704.85
GRAND TOTAL: ✓ **\$144,729.93**

OPTIONAL SERVICES												
9. Structures - Misc. Tasks, Dwgs, Non-Tech.	12	2	1	1	2	2	2	1	1	12	1,544.00	\$122.23
18. Structures - Miscellaneous	40	4	2	4	8	8	8	4	2	40	4,835.08	\$120.88
21. Signalization Analysis	86	9	4	9	17	17	17	9	4	86	10,436.82	\$121.36
22. Signalization Plans	56	6	3	6	11	11	11	6	2	56	6,897.08	\$121.86
Total	194	21	10	20	38	38	38	20	9	194	\$23,712.98	

\$ 4,189.80 \$ 2,223 \$ 3,420 \$ 4,981.80 \$ 3,682.26 \$ 2,978.44 \$ 1,795.6 \$ 442.44

✓ 2,8468 multiple

Exhibit "B" - Page 1 of 30

Project Activity 4: Roadway Analysis

Estimator:

Woolbright Rd. at Seacrest Blvd. Intersection Expansion
2018106

Task No.	Task	Units	No of Units	Hours/ Unit	Total Hours	Comments
4.1	Typical Section Package	LS	1	8	8	Submittal for County approval
4.2	Pavement Type Selection Report	LS	1	0	0	
4.3	Pavement Design Package	LS	1	0	0	
4.4	Cross-Slope Correction	LS	1	0	0	
4.5	Horizontal /Vertical Master Design Files	LS	1	95	95	Low range project: 200 hrs x 0.25 miles (along Woolbright Rd) = 50 hrs. Lower range project: 200 x 0.15 miles (along Seacrest Blvd.)= 30 hrs. Add 16 hrs for intersection geometry
4.6	Access Management	LS	1	0	0	
4.7	Roundabout Evaluation	LS	1	0	0	
4.8	Roundabout Final Design Analysis	LS	1	0	0	
4.9	Cross Section Design Files	LS	1	20	20	Middle range: 80 hrs per mile x 0.25 miles (100' spacing)
4.10	Traffic Control Analysis	LS	1	0	0	NA
4.11	Master TCP Design Files	LS	1	0	0	NA
4.12	Selective Clearing and Grubbing	LS	1	0	0	
4.13	Tree Disposition Plan	LS	1	0	0	
4.14	Design Variations and Exceptions	LS	1	0	0	NA
4.15	Design Report	LS	1	0	0	
4.16	Quantities	LS	1	40	40	Computation Book
4.17	Cost Estimate	LS	1	16	16	Initial estimate at 12 hrs + 1 update at 4 hrs
4.18	Technical Special Provisions and Modified Special Provisions	LS	1	0	0	
4.19	Other Roadway Analyses	LS	1	0	0	
Roadway Analysis Technical Subtotal					180	

Exhibit "B" - Page 2 of 30

Project Activity 4: Roadway Analysis

Task No.	Task	Units	No of Units	Hours/ Unit	Total Hours	Comments
4.20	Field Reviews	LS	1	16	16	2 people at 4 hrs each x 2 field reviews
4.21	Monitor Existing Structures	LS	1	0	0	NA
4.22	Technical Meetings	LS	1	20	20	Meetings are listed below
4.23	Quality Assurance/Quality Control	LS	%	0%	0	
4.24	Independent Peer Review	LS	%	0%	0	
4.25	Supervision	LS	%	0%	0	
Roadway Analysis Nontechnical Subtotal					36	
4.26	Coordination	LS	%	0%	0	
4. Roadway Analysis Total					216	

Technical Meetings	Units	No of Units	Hours/ Unit	Total Hours	PM Attendance at Meeting Required?	Number
Typical Section	EA	0	0	0		0
Pavement	EA	0	0	0		0
Masterplan	EA	0	0	0		0
15% Line and Grade	EA	0	0	0		0
Driveways	EA	0	0	0		0
Local Governments (City of Boynton Beach)	EA	1	4	4		0
Work Zone Traffic Control	EA	0	0	0		0
35/65/95/100% & Final Comment Review Meetings	EA	0	0	0		0
Other Meetings	EA	0	0	0		0
Subtotal Technical Meetings				4	Subtotal Project Manager Meetings	0
Progress Meetings	EA	0	0	0	<i>PM attendance at Progress Meetings is manually entered on General Task 3</i>	--
Phase Review Meetings	EA	4	4	16	<i>PM attendance at Phase Review Meetings is manually entered on General Task 3</i>	--
Total Meetings				20	Total Project Manager Meetings (carries to Tab 3)	0

Carries to 4.17

Carries to Tab 3

Exhibit "B" - Page 3 of 30

Project Activity 5: Roadway Plans

Estimator:

Woolbright Rd. at Seacrest Blvd. Intersection Expansion
2018106

Task No.	Task	Scale	Units	No. of Units or Sheet	Hours/ Unit or Sheet	Total Hours	Comments
5.1	Key Sheet		Sheet	1	8	✓ 8	
5.2	Summary of Pay Items Including Quantity Input		Sheet	1	8	✓ 8	
5.3	Typical Section Sheets						
5.3.1	Typical Sections		EA	1	16	✓ 16	
5.3.2	Typical Section Details		EA	1	8	✓ 8	
5.4	General Notes/Pay Item Notes		Sheet	1	16	✓ 16	
5.5	Summary of Quantities Sheets		Sheet	1	16	✓ 16	
5.6	Project Layout		Sheet	0	0	0	
5.7	Plan/Profile Sheet		Sheet	5	6	✓ 30	Includes Woolbright Rd. (4) and Seacrest Blvd. (1)
5.8	Profile Sheet		Sheet	0	0	0	
5.9	Plan Sheet		Sheet	0	0	0	
5.10	Special Profile		Sheet	0	0	0	
5.11	Back-of-Sidewalk Profile Sheet		Sheet	0	0	0	
5.12	Interchange Layout Sheet		Sheet	0	0	0	
5.13	Ramp Terminal Details (Plan View)		Sheet	0	0	0	
5.14	Intersection Layout Details		Sheet	0	0	0	
5.15	Special Details		EA	1	12	✓ 12	
5.16	Cross-Section Pattern Sheet(s)		Sheet	0	0	0	
5.17	Roadway Soil Survey Sheet(s)		Sheet	1	1	✓ 1	
5.18	Cross Sections		EA	15	3	✓ 45	
5.19	Temporary Traffic Control Plan Sheets		Sheet	0	0	0	
5.20	Temporary Traffic Control Cross Section Sheets		EA	0	0	0	

Exhibit "B" - Page 4 of 30

Project Activity 5: Roadway Plans

Task No.	Task	Scale	Units	No. of Units or Sheet	Hours/ Unit or Sheet	Total Hours	Comments
5.21	Temporary Traffic Control Detail Sheets		Sheet	0	0	0	
5.22	Utility Adjustment Sheets		Sheet	0	0	0	Not required
5.23	Selective Clearing and Grubbing Sheet(s)						
5.23.1	Selective Clearing and Grubbing		Sheet	0	0	0	
5.23.2	Selective Clearing and Grubbing Details		Sheet	0	0	0	
5.24	Tree Disposition Sheet(s)						
5.24.1	Tree Disposition Plan Sheet(s)		Sheet	0	0	0	
5.24.2	Tree Disposition Plan Tables and Schedules		Sheet	0	0	0	
5.25	Project Network Control Sheet(s)		Sheet	1	1	✓ 1	
5.26	Environmental Detail Sheets		Sheet	0	0	0	
5.27	Utility Verification Sheet(s) (SUE Data)		Sheet	1	12	✓ 12	
Roadway Plans Technical Subtotal						✓ 173	
5.28	Quality Assurance/Quality Control		LS	%	0%	0	
5.29	Supervision		LS	%	0%	0	
5. Roadway Plans Total						✓ 173	

Project Activity 6a: Drainage Analysis

Estimator:

Woolbright Rd. at Seacrest Blvd. Intersection Expansion
2018106

Task No.	Task	Units	No of Units	Hours/ Unit	Total Hours	Comments
6a.1	Drainage Map Hydrology	Per Map	0	0	0	
6a.2	Base Clearance Calculations	Per Location	0	0	0	
6a.3	Pond Siting Analysis and Report	Per Basin	0	0	0	
6a.4	Design of Cross Drains	EA	0	0	0	
6a.5	Design of Ditches	Per Ditch Mile	0	0	0	
6a.6	Design of Stormwater Management Facility (Offsite or Infield Pond)	EA	0	0	0	
6a.7	Design of Stormwater Management Facility (Roadside Treatment Swales and Linear Ponds)	Per Cell	0	0	0	
6a.8	Design of Floodplain Compensation	Per Floodplain Basin	0	0	0	
6a.9	Design of Storm Drains	EA	15	3	45	Modify existing structures (6); New Inlets (7)
6a.10	Optional Culvert Material	EA	0	0	0	
6a.11	French Drain Systems	Per Cell	0	0	0	
6a.11.a	Existing French Drain Systems	Per Cell	0	0	0	
6a.12	Drainage Wells	EA	0	0	0	
6a.13	Drainage Design Documentation Report	LS	1	0	0	
6a.14	Bridge Hydraulic Report	EA	0	0	0	
6a.15	Temporary Drainage Analysis	LS	1	0	0	
6a.16	Cost Estimate	LS	1	0	0	
6a.17	Technical Special Provisions and Modified Special Provisions	LS	1	0	0	
6a.18	Hydroplaning Analysis	LS	1	0	0	
6a.19	Existing Permit Analysis	LS	1	0	0	
6a.20	Other Drainage Analysis	LS	1	8	8	Spread Analysis
Drainage Analysis Technical Subtotal					53	
6a.21	Field Reviews	LS	1	4	4	
6a.22	Technical Meetings	LS	1	4	4	Meetings are listed below
6a.23	Environmental Look-Around (ELA) Meeting	LS	1	0	0	

Exhibit "B" - Page 6 of 30

Project Activity 6a: Drainage Analysis

Task No.	Task	Units	No of Units	Hours/ Unit	Total Hours	Comments
6a.24	Quality Assurance/Quality Control	LS	%	0%	0	
6a.25	Independent Peer Review	LS	%	0%	0	
6a.26	Supervision	LS	%	0%	0	
Drainage Analysis Nontechnical Subtotal					0	
6a.27	Coordination	LS	%	0%	0	
6a. Drainage Analysis Total					0	

Technical Meetings	Units	No of Units	Hours/ Unit	Total Hours	Comments	PM Attendance at Meeting Required?	Number
Base Clearance Water Elevation	EA	0	0	0			0
Pond Siting	EA	0	0	0			0
Agency	EA	1	4	4	SPWMD		0
Local Governments (cities, counties)	EA	0	0	0			0
PBC Drainage	EA	0	0	0			0
Other Meetings	EA	0	0	0			0
Subtotal Technical Meetings				4			0
Progress Meetings (if required by FDOT)	EA	0	0	0	PM attendance at Progress Meetings is manually entered on General Task 3		--
Phase Review Meetings	EA	0	0	0	PM attendance at Phase Review Meetings is manually entered on General Task 3		--
Total Meetings				4	Total Project Manager Meetings (carries to Tab 3)		0

Carries to 6.19

Carries to Tab 3

Exhibit "B" - Page 7 of 30

6b. Drainage Plans

Estimator:

Woolbright Rd. at Seacrest Blvd. Intersection Expansion
2018106

Task No.	Task	Scale	Units	No. of Units or Sheet	Hours/ Unit or Sheet	Total Hours	Comments
6b.1	Drainage Map (Including Interchanges)		Sheet	0	0	0	
6b.2	Bridge Hydraulics Recommendation Sheets		Sheet	0	0	0	
6b.3	Summary of Drainage Structures		Sheet	1	8	8	
6b.4	Optional Pipe/Culvert Material		Sheet	0	0	0	
6b.5	Drainage Structure Sheet(s) (Per Structure)		EA	15	3	45	
6b.6	Miscellaneous Drainage Detail Sheets		Sheet	1	12	12	
6b.7	Lateral Ditch Plan/Profile		Sheet	0	0	0	
6b.8	Lateral Ditch Cross Sections		EA	0	0	0	
6b.9	Retention/Detention Ponds Detail Sheet(s)		Sheet	0	0	0	
6b.10	Retention Pond Cross Sections		EA	0	0	0	
6b.11	Erosion Control Plan Sheet(s)		Sheet	0	0	0	
6b.12	SWPPP Sheet(s)		Sheet	0	0	0	
Drainage Plans Technical Subtotal						65	
6b.13	Quality Assurance/Quality Control		LS	%	0%	0	
6b.14	Supervision		LS	%	0%	0	
6. Drainage Plans Total						65	

Exhibit "B" - Page 8 of 30

Project Activity 7: Utilities

Estimator:

Woolbright Rd. at Seacrest Blvd. Intersection Expansion
2018106

Task No.	Task	Units	No of Units	Hours/ Unit	Total Hours	Comments
7.1	Utility Kickoff Meeting	LS	1	0	0	NA
7.2	Identify Existing Utility Agency Owners (UAO(s))	LS	1	8	8	
7.3	Make Utility Contacts	LS	1	0	0	By PBC
7.4	Exception Processing	LS	1	0	0	
7.5	Preliminary Utility Meeting	LS	1	0	0	NA
7.6	Individual/Field Meetings	LS	1	15	15	Assume 5 UAOs
7.7	Collect and Review Plans and Data from UAO(s)	LS	1	8	8	
7.8	Subordination of Easements Coordination	LS	1	0	0	
7.9	Utility Design Meeting	LS	1	0	0	NA
7.10	Review Utility Markups & Work Schedules, and Processing of Schedules & Agreements	LS	1	0	0	
7.11	Utility Coordination/Followup	LS	1	15	15	
7.12	Utility Constructability Review	LS	1	8	8	
7.13	Additional Utility Services	LS	1	0	0	
7.14	Processing Utility Work by Highway Contractor (UWHC)	LS	1	0	0	
7.15	Contract Plans to UAO(s)	LS	1	0	0	
7.16	Certification/Close-Out	LS	1	0	0	
7.17	Other Utilities	LS	1	0	0	
7. Utilities Total					54	

Technical Meetings	Units	No of Units	Hours/ Unit	Total Hours	PM Attendance at Meeting Required?	Number
Kickoff (see 7.1)	EA	0	0	0		0
Preliminary Meeting (see 7.5)	EA	0	0	0		0
Individual UAO Meetings (see 7.6)	EA	5	3	15		0
Field Meetings (see 7.6)	EA	0	0	0		0

Exhibit "B" - Page 9 of 30

Project Activity 7: Utilities

Design Meeting (see 7.9)	EA	0	0	0		0
Other Meetings (this is automatically added into Utilities Total (cell F27))	EA	0	0	0		0
Total Meetings				✓ 15	Total Project Manager Meetings (carries to Tab 3)	✓ 0

Carries to Tab 3

Exhibit "B" - Page 10 of 30

Project Activity 8: Environmental Permits

Estimator:

Woolbright Rd. at Seacrest Blvd. Intersection Expansion

2018106

Task No.	Task	Units	No. of Units	Hours/ Units	Total Hours	Comments
Environmental Permits, Compliances and Clearances						
8.1	Preliminary Project Research	LS	1	16	16	Assume no permits required; research and coordination effort only
Permits						
8.2	Field Work					
8.2.1	Pond Site Alternatives	per pond site	0	0	0	
8.2.2	Establish Wetland Jurisdictional Lines and Assessments	LS	1	0	0	
8.2.3	Species Surveys	LS	1	0	0	
8.2.4	Archeological Surveys	LS	1	0	0	
8.3	Agency Verification of Wetland Data	LS	1	0	0	
8.4	Complete And Submit All Required Permit Applications					
8.4.1	Complete and Submit All Required Wetland Permit Applications	LS	1	0	0	
8.4.2	Complete and Submit All Required Species Permit Applications	LS	1	0	0	
8.5	Prepare Dredge and Fill Sketches (as needed)	LS	1	0	0	
8.6	Prepare USCG Permit Sketches	LS	1	0	0	
8.7	Prepare Water Management District Right-of-Way Occupancy Permit	LS	1	0	0	
8.8	Prepare Coastal Construction Control Line (CCCL) Permit Application	LS	1	0	0	
8.9	Prepare Tree Permit Information	LS	1	0	0	
8.10	Mitigation Design	LS	1	0	0	
8.11	Mitigation Coordination and Meetings	LS	1	0	0	
8.12	Other Environmental Permits	LS	1	0	0	
Environmental Permits, Compliance, and Clearances/Reevaluations Technical Subtotal					16	

Exhibit "B" - Page 11 of 30

Project Activity 8: Environmental Permits

Task No.	Task	Units	No. of Units	Hours/ Units	Total Hours	Comments
8.17	Technical Meetings	LS	1	8	8	Meetings are listed below
8.18	Quality Assurance/Quality Control	LS	%	0%	0	
8.19	Supervision	LS	%	0%	0	
Environmental Permits, Compliance and Clearances Nontechnical Subtotal					8	
8.20	Coordination	LS	%	0%	0	
8. Environmental Permits, Compliance and Clearances Total					24	

Technical Meetings	Units	No of Units	Hours/ Unit	Total Hours	PM Attendance at Meeting Required?	Number
WMD	EA	1	4	4		0
NMFS	EA	0	0	0		0
USACE	EA	0	0	0		0
USCG	EA	0	0	0		0
USFWS	EA	0	0	0		0
FFWCC	EA	0	0	0		0
FDOT	EA	0	0	0		0
Other Meetings (PBC ERM)	EA	1	4	4		0
Subtotal Technical Meetings				8	Subtotal Project Manager Meetings	0
Progress Meetings (if required by FDOT)	EA	0	0	0	<i>PM attendance at Progress Meetings is manually entered on General Task 3</i>	--
Phase Review Meetings	EA	0	0	0	<i>PM attendance at Phase Review Meetings is manually entered on General Task 3</i>	--
Total Meetings				8	Total Project Manager Meetings (carries to Tab 3)	0

Carries to 8.18

Carries to Tab 3

Exhibit "B" - Page 12 of 30

~~X~~
Project Activity 9: Structures Summary and Miscellaneous Tasks and Drawings (OPTIONAL)

Estimator:

Woolbright Rd. at Seacrest Blvd. Intersection Expansion
 2018106

Task No.	Task	Units	Design and Production Staffhours				Comments				
			No. of Units	Hours per Unit	No. of Sheets	Total					
	General Drawings										
9.1	Key Sheet and Index of Drawings	Sheet	0	0	0	0					
9.2	Project Layout	Sheet	0	0	0	0					
9.3	General Notes and Bid Item Notes	Sheet	0	0	0	0					
9.4	Miscellaneous Common Details	Sheet	0	0	0	0					
9.5	Incorporate Report of Core Borings	Sheet	0	0	0	0					
9.6	Design Standards - Bridges	LS	1	0		0					
9.7	Existing Bridge Plans	LS	1	0		0					
9.8	Assemble Plan Summary Boxes and Quantities	LS	1	0		0					
9.9	Cost Estimate	LS	1	0		0					
9.1	Technical Special Provisions and Modified Special Provisions	LS	1	0		0					
Structures - Summary and Miscellaneous Tasks and Drawings					0	0					
Task No.	Task	Total	Task 10	Task 11	Task 12	Task 13	Task 14	Task 15	Task 16	Task 17	Task 18
10-16	Bridge 1	0	0	0	0	0	0	0	0		
10-16	Bridge 2	0									
10-16	Bridge 3	0									
10-16	Bridge 4	0									
10-16	Bridge 5	0									

Exhibit "B" - Page 13 of 30

Project Activity 9: Structures Summary and Miscellaneous Tasks and Drawings (OPTIONAL)

10-16	Bridge 6	0									
10-16	Bridge 7	0									
10-16	Bridge 8	0									
10-16	Bridge 9	0									
10-16	Bridge 10	0									
17	Retaining Walls	0								0	
18	Miscellaneous Structures	40									40
Structures Technical Subtotal		40	0	0	0	0	0	0	0	0	40
Task No.	Task	Units	No. of Units	Hours per Unit	Total	Comments					
9.11	Field Reviews	LS	1	8	8	2 people at 4 hrs each					
9.12	Technical Meetings	LS	1	4	4	Meetings are listed below					
9.13	Quality Assurance/Quality Control	LS	%	0%	0						
9.14	Independent Peer Review	LS	1	0	0						
9.15	Supervision	LS	%	0%	0						
Structures Nontechnical Subtotal					12						
9.16	Coordination	LS	1	0	0						
9. Structures - Summary and Miscellaneous Tasks and Drawings					12						

Technical Meetings	Units	No of Units	Hours/ Unit	Total Hours	PM Attendance at Meeting Required?	Number
BDR Coordination/Review	EA	0	0	0		0
90/100% Comment Review	EA	0	0	0		0
Aesthetics Coordination	EA	0	0	0		0
Regulatory Agency	EA	0	0	0		0
Local Governments (cities, counties)	EA	0	0	0		0
Utility Companies	EA	0	0	0		0
Other Meetings	EA	1	4	4		0
Subtotal Technical Meetings				4		0
Progress Meetings (if required by FDOT)	EA	0	0	0	PM attendance at Progress Meetings is manually entered on General Task 3	--
Phase Review Meetings	EA	0	0	0	PM attendance at Phase Review Meetings is manually entered on General Task 3	--
Total Meetings				4	Total Project Manager Meetings (carries to Tab 3)	0

Carries to 9.11

Carries to Tab 3



Project Activity 18: Miscellaneous Structures (OPTIONAL)

Estimator:

Webb Rd. at Secord Blvd, Intersection Expansion
201806

Task No.	Task	Unit	No. of Units	Hour/Unit	Nbr. of Sheets	Total Hours	Comments
Concrete Box Culvert							
18.1	Concrete Box Culvert	EA	1	0	0	0	
18.2	Concrete Box Culverts Extensions	EA Extension	1	0	0	0	
18.3	Concrete Box Culvert Data Table Plan Sheets	Sheet	1	0	0	0	
18.4	Concrete Box Culvert Special Details Plan Sheets	Sheet	1	0	0	0	
Strain Poles							
18.5	Steel Strain Poles	Initial Config EA Addl Costs	1	0	0	0	
18.6	Concrete Strain Poles	Initial Config EA Addl Costs	1	0	0	0	
18.7	Strain Pole Data Table Plan Sheets	Sheet	1	0	0	0	
18.8	Strain Pole Special Details Plan Sheets	Sheet	1	0	0	0	
Mail Arms							
18.9	Mail Arms	EA Design	1	0	0	32	4 Max terms (Assume all standard)
18.10	Mail Arms Data Table Plan Sheets	Sheet	1	0	1	4	
18.11	Mail Arm Special Details Plan Sheets	Sheet	1	0	0	0	
Overhead and Cantilever Sign Structures							
18.12	Cantilever Sign Structures	EA Design	1	0	0	0	
18.13	Overhead Span Sign Structures	EA Design	1	0	0	0	
18.14	Overhead (Long Span) Overhead Span Sign Structures	EA Design	1	0	0	0	
18.15	Manhole Overhead Sign Structure	EA Design	1	0	0	0	
18.16	Bridge Mounted Signs (Attached to Superstr.)	EA Design	1	0	0	0	
18.17	Overhead and Cantilever Sign Structures Data Table Plan Sheets	Sheet	1	0	0	0	
18.18	Overhead and Cantilever Sign Structures Special Details Plan Sheets	Sheet	1	0	0	0	
High Mast Lighting							
18.19	Non-Standard High Mast Lighting Structures	EA Design	1	0	0	0	
18.20	High Mast Lighting Special Details Plan Sheets	Sheet	1	0	0	0	
Retra Barrier Walls (Ground Mount)							
18.21	Horizontal Wall Geometry	EA Wall	1	0	0	0	
18.22	Vertical Wall Geometry	EA Wall	1	0	0	0	
18.23	Summary of Quantities - Aesthetic Requirements	Sheet	1	0	0	0	
18.24	Sample Drawings	Sheet	1	0	0	0	
18.25	Design of Retra Barrier Walls Covered by Standards	EA Design	1	0	0	0	
18.26	Design of Retra Barrier Walls Not Covered by Standards	EA Design	1	0	0	0	
18.27	Aesthetic Details	LS	1	0	0	0	
Special Structures							
18.28	Fender System	LS	1	0	0	0	
18.29	Fender System Access	LS	1	0	0	0	
18.30	Special Structures	LS	1	0	0	0	
18.31	Other Structures	LS	1	0	0	0	
Auxiliary Structures Report							
18.32	Condition Evaluation of Signal and Sign Structures, and High Mast Light Poles	EA structure	1	0	0	0	
18.33	Condition Evaluation of Signal and Sign Structures, and High Mast Light Poles (No As Built or Design Plans Available)	EA structure	1	0	0	0	
18.34	Analytical Evaluation of Signal and Sign Structures, and High Mast Light Poles	EA structure	1	0	0	0	
18.35	Auxiliary Structures Report	LS	1	0	0	0	
			18. Structures - Miscellaneous Total	1	0	40	

Exhibit "B" - Page 15 of 30

Project Activity 19: Signing and Pavement Marking Analysis

Estimator:

Woolbright Rd. at Seacrest Blvd. Intersection Expansion

2018106

Task No.	Task	Units	No. of Units	Hours/ Units	Total Hours	Comments
19.1	Traffic Data Analysis	LS	1	0	0	
19.3	Reference and Master Design File	LS	1	70	70	As negotiated
19.4	Multi-Post Sign Support Calculations	EA	1	0	0	
19.5	Sign Panel Design Analysis	EA	1	0	0	
19.6	Sign Lighting/Electrical Calculations	EA	1	0	0	
19.7	Quantities	LS	1	15	15	3 hrs per plan sheet x 5
19.8	Cost Estimate	LS	1	0	0	Included in roadway
19.9	Technical Special Provisions and Modified Special Provisions	LS	1	0	0	
19.10	Other Signing and Pavement Marking	LS	1	0	0	
Signing and Pavement Marking Analysis Technical Subtotal					85	
19.11	Field Reviews	LS	1	4	4	2 people at 2hrs each
19.12	Technical Meetings	LS	1	0	0	Meetings are listed below
19.13	Quality Assurance/Quality Control	LS	%	0%	0	
19.14	Independent Peer Review	LS	%	0%	0	
19.15	Supervision	LS	%	0%	0	
Signing and Pavement Marking Analysis Nontechnical Subtotal					4	
19.16	Coordination	LS	%	0%	0	
19. Signing and Pavement Marking Analysis Total					89	

Technical Meetings	Units	No of Units	Hours/ Unit	Total Hours	PM Attendance at Meeting Required?	Number
Sign Panel Design	EA	0	0	0		0
Queue Length Analysis	EA	0	0	0		0
Local Governments (cities, counties)	EA	0	0	0		0
PBC Engineering	EA	0	0	0		0
Subtotal Technical Meetings				0	Subtotal Project Manager Meetings	0

Exhibit "B" - Page 16 of 30

Project Activity 19: Signing and Pavement Marking Analysis

Task No.	Task	Units	No. of Units	Hours/ Units	Total Hours	Comments
	Progress Meetings (if required by FDOT)	EA	0	0	0	PM attendance at Progress Meetings is manually entered on General Task 3
	Phase Review Meetings	EA	0	0	0	PM attendance at Phase Review Meetings is manually entered on General Task 3
	Total Meetings				0	Total Project Manager Meetings (carries to Tab 3)

Carries to 19.12

Carries to Tab 3

Exhibit "B" - Page 17 of 30

Project Activity 20: Signing and Pavement Marking Plans

Estimator:

Woolbright Rd. at Seacrest Blvd. Intersection Expansion
2018106

Task No.	Task	Scale	Units	No of Units	Hours/ Unit	No. of Sheets	Total Hours	Comments
20.1	Key Sheet		Sheet	1	6	1	6	
20.2	Summary of Pay Items Including TRNS-Port Input		LS	1	0		0	
20.3	Tabulation of Quantities		Sheet	1	12	1	12	
20.4	General Notes/Pay Item Notes		Sheet	1	8	1	8	
20.5	Project Layout		Sheet	0	0	0	0	
20.6	Plan Sheet		Sheet	6	4	6	24	
20.7	Typical Details		EA	0	0		0	Not applicable
20.8	Guide Sign Worksheet(s)		EA	0	0		0	
20.9	Traffic Monitoring Site		EA	0	0		0	
20.10	Cross Sections		EA	0	0		0	
20.11	Special Service Point Details		EA	0	0		0	
20.12	Special Details		LS	0	0		0	Not applicable
20.13	Interim Standards		LS	1	0		0	
Signing and Pavement Marking Plans Technical Subtotal						9	50	
20.14	Quality Assurance/Quality Control		LS	%	0%		0	
20.15	Supervision		LS	%	0%		0	
20. Signing and Pavement Marking Plans Total						9	50	

Exhibit "B" - Page 18 of 30



Project Activity 21: Signalization Analysis (OPTIONAL)

Estimator:

Woolbright Rd. at Seacrest Blvd. Intersection Expansion
2018106

Task No.	Task	Units	No. of Units	Hours/Units	Total Hours	Comments
21.1	Traffic Data Collection	LS	1	0	0	
21.2	Traffic Data Analysis	PI	0	0	0	
21.3	Signal Warrant Study	LS	1	0	0	
21.4	System Timings	LS	1	0	0	Provided by PBC Signal Division
21.5	Reference and Master Signalization Design File	PI		54	54	
21.6	Reference and Master Interconnect Communication Design File	LS	1	0	0	Assume Interconnect exists
21.7	Overhead Street Name Sign Design	EA	2	2	4	
21.8	Pole Elevation Analysis	LS	1	2	2	
21.9	Traffic Signal Operation Report	LS	1	0	0	Optional
21.10	Quantities	LS	1	8	8	
21.11	Cost Estimate	LS	1	0	0	Included in roadway
21.12	Technical Special Provisions and Modified Special Provisions	LS	1	0	0	
21.13	Other Signalization Analysis	LS	1	0	0	
Signalization Analysis Technical Subtotal					70	
21.14	Field Reviews	LS	1	8	8	2 people at 4 hrs each
21.15	Technical Meetings	LS	1	8	8	Meetings are listed below
21.16	Quality Assurance/Quality Control	LS	%	0%	0	
21.17	Independent Peer Review	LS	%	0%	0	
21.18	Supervision	LS	%	0%	0	
Signalization Analysis Nontechnical Subtotal					16	
21.19	Coordination	LS	%	0%	0	
21. Signalization Analysis Total					86	

Technical Meetings	Units	No of Units	Hours/Unit	Total Hours	PM Attendance at Meeting Required?	Number
FDOT Traffic Operations	EA	0	0	0		0
FDOT Traffic Design	EA	0	0	0		0
Power Company (service point coordination)	EA	0	4	4		0
Maintaining Agency (cities, counties)	EA	0	4	4		0
Railroads	EA	0	0	0		0
Other Meetings	EA	0	0	0		0
Subtotal Technical Meetings					8	
Subtotal Project Manager Meetings					0	
Progress Meetings (if required by FDOT)	EA	0	0	0	PM attendance at Progress Meetings is manually entered on General Task 3	--
Phase Review Meetings	EA	0	0	0	PM attendance at Phase Review Meetings is manually entered on General Task 3	--
Total Meetings					8	
Total Project Manager Meetings (carries to Tab 3)					0	

Continued on 21.11

Continued on 21.3

Exhibit "B" - Page 19 of 30



Project Activity 22: Signalization Plans (OPTIONAL)

Estimator:

Woolbright Rd. at Seacrest Blvd. Intersection Expansion
2018106

Task No.	Task	Scale	Units	No of Units	Hours/ Unit	No. of Sheets	Total Hours	Comments
22.1	Key Sheet		Sheet	1	6	1	✓ 6	
22.2	Summary of Pay Items Including Designer Interface (TRNS+Port) Input		Sheet	0	0	0	0	
22.3	Tabulation of Quantities		Sheet	1	8	1	✓ 8	
22.4	General Notes/Pay Item Notes		Sheet	1	8	1	✓ 8	
22.5	Plan Sheet		Sheet	1	6	1	✓ 6	
22.6	Interconnect Plans		Sheet	0	0	0	0	
22.7	Traffic Monitoring Site		EA	0	0		0	
22.8	Guide Sign Worksheet		EA	2	2		✓ 4	
22.9	Special Details		Sheet	0	0	0	0	
22.10	Special Service Point Details		EA	1	8		✓ 8	
22.11	Mast Arm/Monotube Tabulation Sheet		PI	1	4		✓ 4	
22.12	Strain Pole Schedule		PI	0	0		0	
22.13	TCP Signal (Temporary)		EA	0	0		0	
22.14	Temporary Detection Sheet		PI	0	0		0	
22.15	Utility Conflict Sheet		Sheet	1	12	1	✓ 12	
22.16	Interim Standards		LS	1	0		0	
Signalization Plans Technical Subtotal						6	✓ 56	
22.17	Quality Assurance/Quality Control		LS	%	0%		0	
22.18	Supervision		LS	%	0%		0	
22. Signalization Plans Total						6	✓ 56	

Exhibit "B" - Page 20 of 30



March 5, 2019

Mr. Luis Costa, P.E.
Bolton Perez & Associates
7280 West Palmetto Park Road, Suite 302-N
Boca Raton, FL 33433

**Re: Woolbright Road and S. Seacrest Blvd. Intersection Improvements Roadway Design
Survey Palm Beach County Project No. 2018106**

Dear Luis:

Thank you for the opportunity to provide you with the following services for the subject site. This proposal is based on documentation and information provided by your office. The scope of services is as follows:

SCOPE OF SERVICES

We will perform a specific purpose/topographic survey under this project and the survey work will be performed in accordance with the current Standards of Practice, The Thoroughfare Design Standards and all County requirements.

I. HORIZONTAL PROJECT NETWORK CONTROL

Using the information supplied by Palm Beach County, we will establish the Rights-of-Way for Woolbright Road and S. Seacrest Boulevard. A traverse will be run through the route and all found monumentation will be tied in. The survey will be oriented to Palm Beach County horizontal control (NAD 83/90 Adjustment). We will obtain the sectional and geodetic control information from the Palm Beach County Survey Department.

The limits of the survey are Woolbright Road, from SW 2nd Street east to SE 1st Street and S. Seacrest Boulevard from just north of SE 14th Avenue south past the Boynton Beach Mausoleum entrance .

II. RIGHT-OF-WAY

We will review and compile any title information furnished to us for the rights-of-way (R/W), abutting properties, easements, and restrictions. No search of the Public Records will be performed by Brown & Phillips. We will review the title package and plot all right-of-way documents and easements on the Survey and alert the County of any missing R/W segments that make up the entire R/W corridor. All gaps or overlaps will be brought to the County's attention.

1860 Old Okeechobee Road • Suite 509 • West Palm Beach, Florida 33409
(561) 615-3988 • Fax (561) 615-3991

M:\PROPOSALS\BY COMPANY\Bolton Perez & Associates\Woolbright Road and Seacrest Blvd Intersection Improvements Roadway Design Survey.doc

Costa
March 5, 2019

III. VERTICAL PROJECT NETWORK CONTROL

A level run will be performed along the route using the existing Palm Beach County benchmarks (NAVD 1988). Benchmarks will be set along the route, not exceeding 600 feet apart. All benchmarks will be set outside of the proposed limits of construction.

IV. BASELINE LAYOUT

We will lay out the baseline at 100-foot intervals setting appropriate points at each station. The baseline will be laid out within the limits of the approximately 3,000' route. These baseline points will be used in the topographic and cross section phase to locate features and facilitate checks. The historical baseline/centerline control will be located and tied to the existing baseline if it differs from the historical one.

V. REFERENCE POINTS

We will reference the baseline at intervals not exceeding 1400 feet along the route. These points will be used to replace disturbed baseline stations. We propose to set three (3) references. Baseline control (begin/end project all PC's & PT's) both horizontal and vertical will be set and referenced outside the limits of construction. We will prepare a Project Network Control (PNC) Sheet meeting Palm Beach County Roadway Standards.

VI. SECTION TIES AND PROPERTY TIES

We will tie in section corners and property corners along the route to check the present alignment of Woolbright Road and S. Seacrest Boulevard. We will try to locate as many corners as possible to positively establish the current right of way. We will tie in a minimum of two (2) Palm Beach County geodetic points to meet County requirements. Subdivision corners, section corners and other existing control monumentation that will assist in the establishment of the R/W will be located and shown on the Survey.

VII. TOPOGRAPHY

A topographic survey will be performed along the route. This survey will tie in all visible features such as, but not limited to, signs, light poles, guardrails, utilities, walks, edge of pavement, curbing, drainage structures, vegetation, hedges, etc. These locations will show all features within the corridor from right of way to right of way extending to 25 feet outside the proposed right of way (if provided prior to start of the field work). In addition, we will obtain the finished floor elevations for the buildings between SW 1st Street and SE 1st Street.

VIII. CROSS SECTIONS and TIN CREATION (DTM)

Cross sections will be done along the route at 100-foot intervals. These cross sections will cover the roadway to the right of way lines and extend to 25 feet outside of the right of way (if provided prior to start of the field work), and 40 feet outside of the right of way between SW 1st Street and SE 1st Street. In addition, we will prepare a TIN file and all the corresponding break lines for the design of the roadway for the hatched area on the attached exhibit. Since a TIN is required this will entail additional shots to be taken on the cross sections to accurately depict the existing conditions.

Costa
March 5, 2019

IX. ASBUILTS

We will attempt to get asbuilt information on all the pipes leading out of any storm structures found. We will show invert elevations, pipe sizes and materials for all pipes located including outfall pipes.

X. LEGAL DESCRIPTIONS AND SKETCHES

We will prepare legal descriptions and sketches as required. These sketches will be based on record ownership data and record plats provided by Palm Beach County, and will be consistent with the requirements of Palm Beach County and Florida Standards of Practice. We have estimated ten (10) parcels for this project at \$450.00 each for a total of \$4,500.00.

XI. CLOSURE

A certified signed and sealed Topographic Survey will be prepared and delivered, showing the existing right-of-way and supporting record information in addition to all improvements as outlined. We propose to provide Bolton Perez & Associates with an AutoCAD file in the version requested. Any additional work will be done on an hourly basis as approved by you. We will perform the scope of services for a lump sum (see of 23,257.28 (\$18,757.28 for the survey and \$4,500.00 for the legal descriptions and sketches); see Attachment 'A' for an hourly breakdown. Please do not hesitate to call me with any questions you might have regarding this proposal. We look forward to working with you on this project.

Sincerely,

Brown & Phillips, Inc.


John E. Phillips III, P.L.S.
Principal

BROWN & PHILLIPS, Inc. PROFESSIONAL SURVEYING SERVICES

Woolbright Road at S. Seacrest Blvd. Intersection Improvements (PBCo. Project No. 2018106)

Type of Survey: Roadway Design

Size: 2800'±

Date: March 5 2019

TASK	3 MAN CREW	CADD TECH	SURVEY TECH	PLS	COMMENTS
Meetings and Coordination				1	
Horizontal Project Network Control	3		1	1	Establish control
Title Review			10	2	Review/compile furnished right-of-way
Vertical Project Network Control	6		1		Set benchmarks along corridor
Baseline Layout	2		0.5		Layout baseline at 100' intervals
Reference Points	3		0.5		Set 3 references and prepare PNC Sheet
Section Ties	3		1		Tie in PBCo. Horizontal control
Subdivision & Property Ties	5		5	1	Tie in adjoining property corners
Topography	20		4		Locate all above ground features
Cross Sections	24		8	1	At 100' intervals to 25' outside R/W - TIN file - no soundings
Asbuilts	5				Asbuilt storm structures
Tree Locations	2				Locate planted trees in R/W to 25' outside R/W (4" or greater)
Topographic Survey		28	5	3	Prepare drawing of topographic survey
Total Hours:	✓ 73	✓ 28	✓ 36	✓ 9	
Rate/Hour	✓ \$162.37	✓ \$90.28	✓ \$90.28	✓ \$125.15	
Subtotal:	✓ \$11,853.01	✓ \$2,527.84	✓ \$3,250.08	✓ \$1,126.35	
Total Labor Cost:					✓ \$18,757.28

Other Direct Costs:

	<u>quantity</u>	<u>unit</u>	<u>cost/unit</u>	<u>total</u>
Legal Description & Sketch	10	each	✓ \$450.00	✓ \$4,500.00
Prints		sheet	\$1.50	\$0.00
Shipping		cost x markup	1.20	\$0.00

Total Other Direct Costs:

✓ \$4,500.00

TOTAL PRICE

3.0 *multiplier*

✓ \$23,257.28

GCME

March 5, 2019

Bolton Perez & Associates
(Network Engineering Services, Inc.)
7280 West Palmetto Park Road, Suite 302-N
Boca Raton, Florida 33433

Attention: Mr. Luis Costa, P.E.
Highway Department Manager

Re: Geotechnical Services - TWO # TBD
Intersection Improvement Services - Mast Arm Structures
Woolbright Road & S. Seacrest Blvd. Intersections
Palm Beach County, Florida
GCME Proposal No.: P77105-1701-001_B

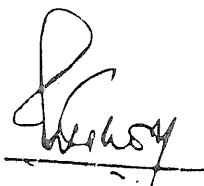
Dear Mr. Costa:

GCME, Inc. is pleased to submit this proposal for providing geotechnical services for the above referenced project.

We at GCME appreciate the opportunity to submit this proposal and look forward to working with you on this project. If you should have any questions, please contact our office.


Respectfully submitted,

GCME, INC.



Partha Ghosh, P.E.
Principal Engineer

PG:mg

 **OPTIONAL**
Scope of Services

**Intersection Improvement Services - Mast Arm Structures
Woolbright Road & S. Seacrest Blvd. Intersections
Palm Beach County, Florida**

Based on the information received, Inc. the scope of work proposed is as follows:

A. MAST ARM STRUCTURES:

- Proposed two (2) mast arms at intersection
 - Woolbright Road & S. Seacrest Blvd.
 - Estimate one (1) SPT boring at diagonally opposite corner
 - Total two (2) @ 25 feet deep SPT Borings

B. ENGINEERING & TECHNICAL SERVICES:

- Geotechnical Engineering Analysis and Reporting related to the above scope of work.

OPTIONAL
FEE ESTIMATE

Intersection Improvement Services - Mast Arm Structures
Woolbright Road & S. Seacrest Blvd. Intersections
Palm Beach County, Florida

GCME, Inc

GCME, Inc.
FEE ESTIMATE - Mast Arms - Total Two (2)
Intersection Improvement Services - Mast Arm Structures
Woolbright Road & S. Seacrest Blvd. Intersections, Palm Beach County, Florida
PBC Project No. TWO # TBD

No.	ITEM DESCRIPTION	Unit	# of Units	Unit Price	Total
I. Field Investigation					
1A	Truck Rig Mobilization	Each	1	\$ 350.00	\$ 350.00
1B	Track Rig Mobilization	Each	0	\$ -	\$ -
2A	SPT- Truck/MB 0-50 Ft	Foot	50	\$ 16.00	\$ 800.00
2B	SPT- Truck/MB 50-100 Ft	Foot	0	\$ 18.00	\$ -
3A	Rock Coring Truck/MB 0-50 Ft	Foot	0	\$ -	\$ -
3B	Rock Coring Truck/MB 50-100 Ft	Foot	0	\$ -	\$ -
4A	Grout Boreholes- Truck/MB 0-50 Ft	Foot	50	\$ 6.00	\$ 300.00
4B	Grout Boreholes- Truck/MB 50-100 Ft	Foot	0	\$ 6.00	\$ -
5A	Temp Casing 3"- Truck/MB 0-50 Ft	Foot	50	\$ 7.50	\$ 375.00
5B	Temp Casing 3"- Truck/MB 50-100 Ft	Foot	0	\$ 8.50	\$ -
6	Auger Borings- Hand & Truck/MB	Foot	0	\$ 12.00	\$ -
7A	Field Permeability 0-10 Ft	Each	0	\$ 300.00	\$ -
7B	Field Permeability 10-25 Ft	Each	0	\$ -	\$ -
7C	Double Ring Infiltration test	Each	0	\$ 550.00	\$ -
8	MOT - Traffic Control Set-up/Removal [1 man crew with safety equipments]	Day	1	\$ 1,200.00	\$ 1,200.00
9	Soil Probing - Muck/Unsuitable Soil Delineation	Hour	0	\$ 100.00	\$ -
10A	Extra SPT Samples-Truck/MB 0-50 Ft	Each	0	\$ -	\$ -
10B	Extra SPT Samples-Truck/MB50-100 Ft	Each	0	\$ -	\$ -
11	Pavement Cores	Each	0	\$ 60.00	\$ -
II. Laboratory Testing					
1	Lab Classification/Assignment by Staff Engineer	Hour	4	\$ 96.63	\$ 386.52
2	Natural Moisture	Each	4	\$ 12.00	\$ 48.00
3	Full Grad Grain Analysis	Each	4	\$ 65.00	\$ 260.00
4	Organic Content	Each	2	\$ 50.00	\$ 100.00
5	Atterberg Limit	Each	2	\$ 85.00	\$ 170.00
6	Corrosion Series	Each	1	\$ 150.00	\$ 150.00
7	LBR	Each	0	\$ 275.00	\$ -
III. Field Engineering & Technical Services					
1	Site Recon./ Boring Layout / Utility Coordination / Etc. Engineering Technician	Hour	8	\$ 72.00	\$ 576.00

GCME, Inc

GCME, Inc.
FEE ESTIMATE - Mast Arms - Total Two (2)
Intersection Improvement Services - Mast Arm Structures
Woolbright Road & S. Seacrest Blvd. Intersections, Palm Beach County, Florida
PBC Project No. TWO # TBD

IV. ENGINEERING AND TECHNICAL SERVICES

Principal Engineer	Hour	2	\$	✓ 210.00	\$	✓ 420.00
Senior Geotechnical Engineer	Hour	4	\$	✓ 180.00	\$	✓ 720.00
Engineer, P.E.	Hour	10	\$	✓ 125.49	\$	✓ 1,254.90
Staff Engineer	Hour	15	\$	✓ 96.63	\$	✓ 1,449.45
Drafter /CADD	Hour	6	\$	✓ 72.00	\$	✓ 432.00
GCME Manhour =		✓ 37				

Field and Laboratory Services = ✓ \$4,715.52
Engg. and Tech. Services = ✓ \$4,276.35

ESTIMATED TOTAL COST - Mast Arm Structure = ✓ \$8,991.87

✓ 3.0 multiplier

OEBO SCHEDULE 1

LIST OF PROPOSED CONTRACTOR/CONSULTANT AND SUBCONTRACTOR/SUBCONSULTANT PARTICIPATION

SOLICITATION/PROJECT/BID NAME: Woolbright and Seacrest Blvd Intersection Improvements
 NAME OF PRIME RESPONDENT/BIDDER: Bolton Perez & Associates, Inc.
 CONTACT PERSON: Luis Costa, PE
 SOLICITATION OPENING/SUBMITTAL DATE: _____

SOLICITATION/PROJECT/BID No.: 2018106
 ADDRESS: 7280 W Palmetto Park Road, #302-N Boca Raton, FL 33433
 PHONE NO.: 561-7176496 E-MAIL: lcosta@bpaengineers.com
 DEPARTMENT: Engineering & Public Works

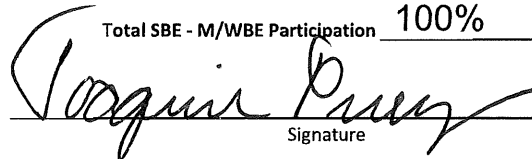
PLEASE LIST THE DOLLAR AMOUNT OR PERCENTAGE OF WORK TO BE COMPLETED BY THE PRIME CONTRACTOR/CONSULTANT ON THIS PROJECT. PLEASE ALSO LIST THE DOLLAR AMOUNT OR PERCENTAGE OF WORK TO BE COMPLETED BY ALL SUBCONTRACTORS/SUBCONSULTANTS ON THE PROJECT.

Name, Address and Phone Number	(Check all Applicable Categories)			DOLLAR AMOUNT OR PERCENTAGE OF WORK				
	Non-SBE	M/WBE Minority/Women Business	SBE Small Business	Black	Hispanic	Women	Caucasian	Other (Please Specify)
1. Network Engineering Services, Inc /dba/ Bolton Perez & Associates, Inc. 7280 West Palmetto Park Rd, # 302-N Boca Raton, FL 33433 561-717-6496	<input type="checkbox"/>	<input checked="" type="checkbox"/>	<input type="checkbox"/>	_____	<u>77.72%</u>	_____	_____	_____
2. Brown & Phillips, Inc. 1860 Old Okeechobee Road, # 509 WPB, FL 33409 561-615-3988	<input type="checkbox"/>	<input checked="" type="checkbox"/>	<input checked="" type="checkbox"/>	<u>16.07%</u>	_____	_____	_____	_____
3. GCME, Inc. 1730 W. 10th Street, Riviera Beach, FL 33404 561-845-8727	<input type="checkbox"/>	<input type="checkbox"/>	<input checked="" type="checkbox"/>	_____	_____	_____	_____	<u>6.21%</u>
4.	<input type="checkbox"/>	<input type="checkbox"/>	<input type="checkbox"/>	_____	_____	_____	_____	_____
5.	<input type="checkbox"/>	<input type="checkbox"/>	<input type="checkbox"/>	_____	_____	_____	_____	_____
(Please use additional sheets if necessary)				Total	<u>16.07%</u>	<u>77.72%</u>	_____	<u>6.21%</u>

Total Bid Price \$ 144,729.93

Total SBE - M/WBE Participation 100%

I hereby certify that the above information is accurate to the best of my knowledge:


 Signature

Joaquin Perez, PE - President
 Title

- Note:**
1. The amount listed on this form for a Subcontractor/subconsultant must be supported by price or percentage listed on the properly executed Schedule 2 or attached signed proposal.
 2. Firms may be certified by Palm Beach County as an SBE and/or an M/WBE. If firms are certified as both an SBE and/or M/WBE, please indicate the dollar amount under the appropriate category.
 3. Modification of this form is not permitted and will be rejected upon submittal.

Exhibit "C"
 Page 1 of 4

OEBO LETTER OF INTENT – SCHEDULE 2

*Exhibit "C"
Page 2 of 4*

A completed Schedule 2 is a binding document between the Prime Contractor/consultant and a Subcontractor/subconsultant (for any tier) and should be treated as such. The Schedule 2 shall contain bolded language indicating that by signing the Schedule 2, both parties recognize this Schedule as a binding document. All Subcontractors/subconsultants, including any tiered Subcontractors/subconsultants, must properly execute this document. Each properly executed Schedule 2 must be submitted with the bid/proposal.

SOLICITATION/PROJECT NUMBER: 2018106
 SOLICITATION/PROJECT NAME: Woolbright Road and Seacrest Boulevard Intersection Improvements

Name of Prime: Bolton Perez & Associates, Inc.

(Check box(s) that apply)

SBE WBE MBE M/WBE Non-S/M/WBE Date of Palm Beach County Certification (if applicable): 08/31/2016

The undersigned affirms they are the following (select one from each column):

Column 1

Column 2

Male Female African-American/Black Asian American Caucasian American
 Hispanic American Native American

S/M/WBE PARTICIPATION – S/M/WBE Primes must document all work to be performed by their own work force on this form. Failure to submit a properly executed Schedule 2 for any S/M/WBE participation may result in that participation not being counted. Specify in detail, the scope of work to be performed or items supplied with the dollar amount and/or percentage for each work item. S/M/WBE credit will only be given for the areas in which the S/M/WBE is certified. A detailed proposal may be attached to a properly executed Schedule 2.

Line Item	Item Description	Unit Price	Quantity/ Units	Contingencies/ Allowances	Total Price/Percentage
	Civil Engineering Services				\$112,480.78 / 77.72%

The undersigned Subcontractor/subconsultant is prepared to self-perform the above-described work in conjunction with the aforementioned project at the following total price or percentage: 77.72%

If the undersigned intends to subcontract any portion of this work to another Subcontractor/subconsultant, please list the business name and the amount below accompanied by a separate properly executed Schedule 2.

N/A Price or Percentage: N/A
 Name of 2nd/3rd tier Subcontractor/subconsultant

Bolton Perez & Associates, Inc
 Print Name of Prime
 By: *Joaquin Perez*
 Authorized Signature
Joaquin Perez, PE
 Print Name
President
 Title
 Date: 05-29-2019

 Print Name of Subcontractor/subconsultant
 By: _____
 Authorized Signature

 Print Name

 Title

 Date: _____

Client#: 1054840

BOLTOPER

ACORD™

CERTIFICATE OF LIABILITY INSURANCE

DATE (MM/DD/YYYY) 05/09/2019

THIS CERTIFICATE IS ISSUED AS A MATTER OF INFORMATION ONLY AND CONFERS NO RIGHTS UPON THE CERTIFICATE HOLDER. THIS CERTIFICATE DOES NOT AFFIRMATIVELY OR NEGATIVELY AMEND, EXTEND OR ALTER THE COVERAGE AFFORDED BY THE POLICIES BELOW. THIS CERTIFICATE OF INSURANCE DOES NOT CONSTITUTE A CONTRACT BETWEEN THE ISSUING INSURER(S), AUTHORIZED REPRESENTATIVE OR PRODUCER, AND THE CERTIFICATE HOLDER.

IMPORTANT: If the certificate holder is an ADDITIONAL INSURED, the policy(ies) must have ADDITIONAL INSURED provisions or be endorsed. If SUBROGATION IS WAIVED, subject to the terms and conditions of the policy, certain policies may require an endorsement. A statement on this certificate does not confer any rights to the certificate holder in lieu of such endorsement(s).

PRODUCER: USI Insurance Services, LLC, 2502 N Rocky Point Drive, Suite 400, Tampa, FL 33607. CONTACT NAME: [Blank], PHONE (A/C No, Ext): 813 321-7500, FAX (A/C, No): [Blank], E-MAIL ADDRESS: [Blank]. INSURER(S) AFFORDING COVERAGE: INSURER A: Travelers Indemnity Co of America (NAIC # 25666), INSURER B: Travelers Indemnity Company (25658), INSURER C: Travelers Casualty and Surety Company (19038), INSURER D: XL Specialty Insurance Company (37885), INSURER E: Travelers Indemnity Co. of America (25666), INSURER F: [Blank].

COVERAGES CERTIFICATE NUMBER: REVISION NUMBER:

THIS IS TO CERTIFY THAT THE POLICIES OF INSURANCE LISTED BELOW HAVE BEEN ISSUED TO THE INSURED NAMED ABOVE FOR THE POLICY PERIOD INDICATED. NOTWITHSTANDING ANY REQUIREMENT, TERM OR CONDITION OF ANY CONTRACT OR OTHER DOCUMENT WITH RESPECT TO WHICH THIS CERTIFICATE MAY BE ISSUED OR MAY PERTAIN, THE INSURANCE AFFORDED BY THE POLICIES DESCRIBED HEREIN IS SUBJECT TO ALL THE TERMS, EXCLUSIONS AND CONDITIONS OF SUCH POLICIES. LIMITS SHOWN MAY HAVE BEEN REDUCED BY PAID CLAIMS.

Table with columns: INSR LTR, TYPE OF INSURANCE, ADDL SUBR INSR, WVD, POLICY NUMBER, POLICY EFF (MM/DD/YYYY), POLICY EXP (MM/DD/YYYY), LIMITS. Rows include: A COMMERCIAL GENERAL LIABILITY (660613M4100), E AUTOMOBILE LIABILITY (BA613M6129), B UMBRELLA LIAB (CUP3621T855), C WORKERS COMPENSATION AND EMPLOYERS' LIABILITY (UB8J581573), D Professional Liability (DPR9934493).

DESCRIPTION OF OPERATIONS / LOCATIONS / VEHICLES (ACORD 101, Additional Remarks Schedule, may be attached if more space is required) Professional Liability coverage is written on a claims-made basis. Description: BPA Project No. 17.08.01; Intersection Improvements Annual Services Palm Beach County Board of County Commissioners, a Political Subdivision of the State of Florida, its officers, Employees and Agents are named as additional insureds on all policies listed above except the workers compensation and professional liability as required by written contract including completed and (See Attached Descriptions)

CERTIFICATE HOLDER: Palm Beach County, C/O JDi Data Corporation, 100 W Cypress Creek Rd, Suite 1052, Fort Lauderdale, FL 33309. CANCELLATION: SHOULD ANY OF THE ABOVE DESCRIBED POLICIES BE CANCELLED BEFORE THE EXPIRATION DATE THEREOF, NOTICE WILL BE DELIVERED IN ACCORDANCE WITH THE POLICY PROVISIONS. AUTHORIZED REPRESENTATIVE: [Signature]

© 1988-2015 ACORD CORPORATION. All rights reserved.

DESCRIPTIONS (Continued from Page 1)

ongoing operations on per project basis, coverage is primary and non contributory. Waiver of subrogation in favor of the additional insureds applies to all policies listed above as required by written contract. Thirty (30) days prior written notice of cancellation except 10 days for non payment of premium will be given on all policies listed above. Professional Liability retro date is 03/01/1997.