

PALM BEACH COUNTY
BOARD OF COUNTY COMMISSIONERS

AGENDA ITEM SUMMARY

=====

Meeting Date: April 7, 2020

Consent

Regular

Ordinance

Public Hearing

Department: Palm Tran

=====

I. EXECUTIVE BRIEF

Motion and Title: Staff recommends motion to adopt a Resolution of the Board of County Commissioners (BCC), of Palm Beach County, Florida, authorizing the submittal of an application for financial assistance pursuant to the Palm Beach Transportation Planning Agency (TPA) 2020 Transportation Alternatives Program for a proposed transportation project to construct ADA bus stop enhancements in addition to agreeing to fund the ongoing maintenance and operational expenses associated with the project.

Summary: Palm Tran is submitting a grant application requesting funds to enhance 116 Palm Tran bus stops with ADA accessible pathways. The enhancements include construction of concrete boarding and alighting areas (i.e. pathways) that allow Palm Tran passengers who utilize wheelchairs and/or other mobility devices to more easily access the fixed-route transit system. If approved, the grant funds will be available in Fiscal Year 2025. Palm Beach County is requesting \$388,884 to fund this project.

No County funds are required. Countywide (DR)

Background and Justification: Palm Tran is partnering with Palm Beach County Engineering in order to construct ADA accessible pathways as part of an ADA bus stop retrofit program. All bus stops are located on County-owned right of ways. The Transportation Alternatives grant, through the TPA, funds projects of up to \$1 million in federal money to assist public agencies in implementing specific projects.

Attachment(s):

- 1. Resolutions (3)
- 2. TPA Transportation Alternatives 2020 Grant Application

=====

Recommended By: _____  _____ 3/19/2020
 Executive Director Date

Approved By: _____  _____ 3/23/2020
 Assistant County Administrator Date

II. FISCAL IMPACT ANALYSIS

A. Five Year Summary of Fiscal Impact:

Fiscal Years	2020	2021	2022	2023	2024
Capital Expenditures	0				
Operating Costs	0				
External Revenues	0				
Program Income(County)					
In-Kind Match(County)					
NET FISCAL IMPACT	0				
#ADDITIONAL FTE POSITIONS (CUMULATIVE)	0				

Is Item Included in Current Budget? Yes No
 Does this item include the use of federal funds? Yes No

Budget Account No:

Fund Agency Organization Object

B. Recommended Sources of Funds/Summary of Fiscal Impact:

There is no fiscal impact at this time. If awarded, the grant will cover the costs to construct the bus stops. Cost for operations and maintenance will be included in future Palm Tran operating budgets.

C. Departmental Fiscal Review: Carol Richmond
 Carol Richmond, Interim Director Administrative Services

III. REVIEW COMMENTS:

A. OFMB Fiscal and/or Contract Dev. and Control Comments:

Delegh Brown
 5/12 OFMB

[Signature] 3/18/2020
 Contract Dev. & Control
 3/17/2020 JW

B. Legal Sufficiency

[Signature] 3/20/2020
 Assistant County Attorney

C. Other Department Review

 Department Director

(THIS SUMMARY IS NOT TO BE USED AS A BASIS FOR PAYMENT.)

RESOLUTION NO. R-

RESOLUTION OF THE BOARD OF COUNTY COMMISSIONERS (BCC), OF PALM BEACH COUNTY, FLORIDA, AUTHORIZING THE SUBMITTAL OF AN APPLICATION FOR FINANCIAL ASSISTANCE PURSUANT TO THE PALM BEACH TRANSPORTATION PLANNING AGENCY (TPA) 2020 TRANSPORTATION ALTERNATIVES PROGRAM FOR A PROPOSED TRANSPORTATION PROJECT TO CONSTRUCT ADA BUS STOP ENHANCEMENTS IN ADDITION TO AGREEING TO FUND THE ONGOING MAINTENANCE AND OPERATIONAL EXPENSES ASSOCIATED WITH THE PROJECT; ESTABLISHING AN EFFECTIVE DATE.

WHEREAS, the BCC is eligible to apply for funding in an amount not to exceed \$1,000,000.00 from the TPA 2020 Transportation Alternatives Program; and

WHEREAS, the BCC desires to accomplish a Palm Beach County ADA Bus Stop Enhancements Project (hereinafter the "Project"); and

WHEREAS, the Project involves construction; however no right-of-way is needed to implement the Project; and

WHEREAS, if the Project is funded by the TPA, the BCC agrees to appropriate from current or other legally available funds, such funds as may be necessary to manage the implementation of the Project, and to be eligible for reimbursement of costs associated with the Project in an amount not to exceed \$388,884.00; and

WHEREAS, after completion of the Project and during its useful life, the BCC agrees to appropriate from current or other legally available funds such funds as may be necessary for the continued operation and maintenance of the Project.

NOW, THEREFORE, BE IT RESOLVED BY THE BOARD OF COUNTY COMMISSIONERS OF PALM BEACH COUNTY, FLORIDA, that:

1. The foregoing recitals are incorporated herein as true and correct statements of the BCC.
2. The BCC does hereby approve the submission of a Grant Application for \$388,884.00 to the TPA.
3. The Palm Beach County Administrator and the Executive Director of Palm Tran are each authorized to furnish such additional information or documentation that the TPA may require in connection with the Project.

4. The BCC agrees to appropriate from current or other legally available funds, such funds as may be necessary to implement the Project and to support, during its useful life, the continued operation and maintenance of the Project.

5. The Mayor is authorized to sign the Grant Application for the TPA 2020 Transportation Alternatives Program for the Project.

6. This Resolution shall take effect upon its adoption.

The foregoing resolution was offered by Commissioner _____, who moved its adoption. The motion was seconded by Commissioner _____, and upon being put to a vote, the vote was as follows:

- Commissioner Dave Kerner, Mayor _____
- Commissioner Robert S. Weinroth, Vice Mayor _____
- Commissioner Hal R. Valeche _____
- Commissioner Gregg K. Weiss _____
- Commissioner Mary Lou Berger _____
- Commissioner Melissa McKinlay _____
- Commissioner Mack Bernard _____

The Mayor thereupon declared this resolution duly passed and adopted this _____ day of _____, 2020.

APPROVED AS TO FORM
AND LEGAL SUFFICIENCY

By:  _____
County Attorney

PALM BEACH COUNTY, FLORIDA
by its BOARD OF COMMISSIONERS
Sharon R. Bock, Clerk and Comptroller

By: _____
Deputy Clerk

RESOLUTION NO. R-

RESOLUTION OF THE BOARD OF COUNTY COMMISSIONERS (BCC), OF PALM BEACH COUNTY, FLORIDA, AUTHORIZING THE SUBMITTAL OF AN APPLICATION FOR FINANCIAL ASSISTANCE PURSUANT TO THE PALM BEACH TRANSPORTATION PLANNING AGENCY (TPA) 2020 TRANSPORTATION ALTERNATIVES PROGRAM FOR A PROPOSED TRANSPORTATION PROJECT TO CONSTRUCT ADA BUS STOP ENHANCEMENTS IN ADDITION TO AGREEING TO FUND THE ONGOING MAINTENANCE AND OPERATIONAL EXPENSES ASSOCIATED WITH THE PROJECT; ESTABLISHING AN EFFECTIVE DATE.

WHEREAS, the BCC is eligible to apply for funding in an amount not to exceed \$1,000,000.00 from the TPA 2020 Transportation Alternatives Program; and

WHEREAS, the BCC desires to accomplish a Palm Beach County ADA Bus Stop Enhancements Project (hereinafter the "Project"); and

WHEREAS, the Project involves construction; however no right-of-way is needed to implement the Project; and

WHEREAS, if the Project is funded by the TPA, the BCC agrees to appropriate from current or other legally available funds, such funds as may be necessary to manage the implementation of the Project, and to be eligible for reimbursement of costs associated with the Project in an amount not to exceed \$388,884.00; and

WHEREAS, after completion of the Project and during its useful life, the BCC agrees to appropriate from current or other legally available funds such funds as may be necessary for the continued operation and maintenance of the Project.

NOW, THEREFORE, BE IT RESOLVED BY THE BOARD OF COUNTY COMMISSIONERS OF PALM BEACH COUNTY, FLORIDA, that:

1. The foregoing recitals are incorporated herein as true and correct statements of the BCC.
2. The BCC does hereby approve the submission of a Grant Application for \$388,884.00 to the TPA.
3. The Palm Beach County Administrator and the Executive Director of Palm Tran are each authorized to furnish such additional information or documentation that the TPA may require in connection with the Project.

4. The BCC agrees to appropriate from current or other legally available funds, such funds as may be necessary to implement the Project and to support, during its useful life, the continued operation and maintenance of the Project.

5. The Mayor is authorized to sign the Grant Application for the TPA 2020 Transportation Alternatives Program for the Project.

6. This Resolution shall take effect upon its adoption.

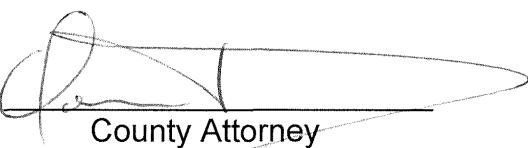
The foregoing resolution was offered by Commissioner _____, who moved its adoption. The motion was seconded by Commissioner _____, and upon being put to a vote, the vote was as follows:

- Commissioner Dave Kerner, Mayor _____
- Commissioner Robert S. Weinroth, Vice Mayor _____
- Commissioner Hal R. Valeche _____
- Commissioner Gregg K. Weiss _____
- Commissioner Mary Lou Berger _____
- Commissioner Melissa McKinlay _____
- Commissioner Mack Bernard _____

The Mayor thereupon declared this resolution duly passed and adopted this _____ day of _____, 2020.

APPROVED AS TO FORM
AND LEGAL SUFFICIENCY

PALM BEACH COUNTY, FLORIDA
by its BOARD OF COMMISSIONERS
Sharon R. Bock, Clerk and Comptroller

By:  _____
County Attorney

By: _____
Deputy Clerk

RESOLUTION NO. R-

RESOLUTION OF THE BOARD OF COUNTY COMMISSIONERS (BCC), OF PALM BEACH COUNTY, FLORIDA, AUTHORIZING THE SUBMITTAL OF AN APPLICATION FOR FINANCIAL ASSISTANCE PURSUANT TO THE PALM BEACH TRANSPORTATION PLANNING AGENCY (TPA) 2020 TRANSPORTATION ALTERNATIVES PROGRAM FOR A PROPOSED TRANSPORTATION PROJECT TO CONSTRUCT ADA BUS STOP ENHANCEMENTS IN ADDITION TO AGREEING TO FUND THE ONGOING MAINTENANCE AND OPERATIONAL EXPENSES ASSOCIATED WITH THE PROJECT; ESTABLISHING AN EFFECTIVE DATE.

WHEREAS, the BCC is eligible to apply for funding in an amount not to exceed \$1,000,000.00 from the TPA 2020 Transportation Alternatives Program; and

WHEREAS, the BCC desires to accomplish a Palm Beach County ADA Bus Stop Enhancements Project (hereinafter the "Project"); and

WHEREAS, the Project involves construction; however no right-of-way is needed to implement the Project; and

WHEREAS, if the Project is funded by the TPA, the BCC agrees to appropriate from current or other legally available funds, such funds as may be necessary to manage the implementation of the Project, and to be eligible for reimbursement of costs associated with the Project in an amount not to exceed \$388,884.00; and

WHEREAS, after completion of the Project and during its useful life, the BCC agrees to appropriate from current or other legally available funds such funds as may be necessary for the continued operation and maintenance of the Project.

NOW, THEREFORE, BE IT RESOLVED BY THE BOARD OF COUNTY COMMISSIONERS OF PALM BEACH COUNTY, FLORIDA, that:

1. The foregoing recitals are incorporated herein as true and correct statements of the BCC.
2. The BCC does hereby approve the submission of a Grant Application for \$388,884.00 to the TPA.
3. The Palm Beach County Administrator and the Executive Director of Palm Tran are each authorized to furnish such additional information or documentation that the TPA may require in connection with the Project.

4. The BCC agrees to appropriate from current or other legally available funds, such funds as may be necessary to implement the Project and to support, during its useful life, the continued operation and maintenance of the Project.

5. The Mayor is authorized to sign the Grant Application for the TPA 2020 Transportation Alternatives Program for the Project.

6. This Resolution shall take effect upon its adoption.

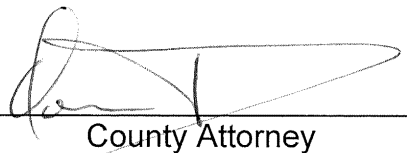
The foregoing resolution was offered by Commissioner _____, who moved its adoption. The motion was seconded by Commissioner _____, and upon being put to a vote, the vote was as follows:

Commissioner Dave Kerner, Mayor	_____
Commissioner Robert S. Weinroth, Vice Mayor	_____
Commissioner Hal R. Valeche	_____
Commissioner Gregg K. Weiss	_____
Commissioner Mary Lou Berger	_____
Commissioner Melissa McKinlay	_____
Commissioner Mack Bernard	_____

The Mayor thereupon declared this resolution duly passed and adopted this _____ day of _____, 2020.

APPROVED AS TO FORM
AND LEGAL SUFFICIENCY

By:



County Attorney

PALM BEACH COUNTY, FLORIDA
by its BOARD OF COMMISSIONERS
Sharon R. Bock, Clerk and Comptroller

By:

Deputy Clerk

APPLICANT CONTACT INFORMATION

Contact Person Steve Anderson
Title Interim Director of Transit Planning
Email sanderson@pbcgov.org
Phone Number 561-841-4246
Address

PROJECT LOCATION

Road Name Multiple County Roads and multiple locations
Road Number County Roads only

Project Limit Begin Palm Beach County
Project Limit End Palm Beach County

QUALIFYING ACTIVITIES FOR FUNDING

Check the box Transportation Alternatives activity that represents the majority of the work the proposed project will address. Eligible activities must be consistent with details described under 23 U.S.C. 133(h)(3).

- Construction of on-road and off-road trail facilities for pedestrians, bicyclists, and other non-motorized forms of transportation, including sidewalks, bicycle infrastructure, pedestrian and bicycle signals, traffic calming techniques, lighting and other safety-related infrastructure, and transportation projects to achieve compliance with the Americans with Disabilities Act of 1990
- Construction of infrastructure-related projects and systems that will provide safe routes for non-drivers, including children, older adults, and individuals with disabilities to access daily needs.
- Conversion and use of abandoned railroad corridors for trails for pedestrians, bicyclists, or other non-motorized transportation users
- Safe Routes to School non-infrastructure-related activities to encourage walking and bicycling to school, including public awareness campaigns and outreach to press and community leaders, traffic education and enforcement in the vicinity of schools, student sessions on bicycle and pedestrian safety, health, and environment, and funding for training, volunteers, and managers of safe routes to school programs. *Note, Florida’s Safe Routes to School Infrastructure application must accompany this application to be considered for funding.*
- Application attached
- Other eligible activities not specified above

PROJECT TYPICAL SECTION INFORMATION

Complete the following information for existing & proposed features, dimensions, & right of way lines. The typical section information provides an understanding of the spacing requirement differences between the existing facilities and the proposed facilities.

	EXISTING	PROPOSED
RIGHT-OF-WAY WIDTH Project must fit within current ROW, acquisition is not permitted		
PEDESTRIAN OR MULTIUSE FACILITIES		
Length (miles) for one direction. Do not count both sides of roadway.		
Width on North or West side (feet)*	n/a	n/a
Width on South or East side (feet)*	n/a	n/a
BICYCLE FACILITIES		
Bike Lane Length (feet) for one direction. Do not count both sides of roadway.		
Width on North or West side (feet)* (not Including Buffer Width)	n/a	n/a
Buffer Width on North or West side (feet)*	n/a	n/a
Width on South or East side (feet)* (not Including Buffer Width)	n/a	n/a
Buffer Width on South or East side (feet)*	n/a	n/a
Proposed improvements requires:		
Pavement widening <input type="checkbox"/> Sharrows <input type="checkbox"/> Restriping <input type="checkbox"/>		
MOTORIZED VEHICLE FACILITIES		
Number of Through Travel Lanes		
Typical Through Lane Width (feet)		
Total Width* (No. Travel Lanes x Lane Width)	n/a	n/a
Posted Speed Limit		
Design Speed (if known)		
MEDIAN/SWALE/CURB		
Median/Center Turning Lane Width (feet)*	n/a	n/a
Swale Width (feet)*	n/a	n/a
Curb Width (feet)*	n/a	n/a
*TOTAL WIDTH OF ALL COMPONENTS (Add all rows with red for total width) Must fit within existing right-of-way.	0	0

RIGHT-OF-WAY OWNERSHIP DOCUMENTATION

Describe the project's existing right-of-way ownerships. This description shall identify when the right-of-way was acquired and how ownership is documented (i.e. plats, deeds, prescriptions, certified surveys, easements). If right-of-way is an easement, please describe the easement language. Right-of-way ownership verification documents are a required attachment (see submittal checklist on page 9).

Entire project (all bus stops) is within County Right-of-Way (ROW) adjacent to County roads that are owned and maintained by the County. See attachment for verification.

PROJECT SCOPE OF WORK

Describe how the proposed improvements will affect the following:

ADA items (crosswalks, sidewalks, ramps, etc.)

All proposed crosswalks, sidewalks, ramps, etc. comply with ADA standards YES NO

Project will turn non-ADA compliant bus stops into compliant bus stops with the addition of a minimum 5' wide sidewalk connection.

Access Management revisions (median modifications, impacts to driveways, etc.) YES NO

Pedestrian and/or Roadway Lighting

Pedestrian lighting proposed YES NO

Roadway lighting proposed YES NO

Landscape (with Local Funds)

Median landscape proposed YES NO

Other landscape proposed YES NO

Irrigation items proposed YES NO

Signalization

Pedestrian signals proposed YES NO

Existing signalization to be replaced YES NO

New traffic signalization proposed YES NO

Transit Improvements

Queue jump possible YES NO

Transit provider concurrence provided YES NO

Upgrade existing bus bay area YES NO

School Zone Modifications

Existing flashing school zone signal on state road YES NO

High emphasis cross walk at unsignalized crossing YES NO

Utility Modifications

Sub-surface relocation is required YES NO

Utility coordination is required YES NO

Drainage and/or other Permits

Existing closed drainage system to remain YES NO

Existing open drainage system to remain YES NO

Railroad Crossing Modifications

Rail crossing within limits YES NO

Replace railroad signal equipment and gates YES NO

Bridge Modifications

Proposed pedestrian bridge YES NO

Bridge replacement YES NO

Proposed bridge widening YES NO

Other Scope Items

Summarize any special characteristics of the project.

116 Bus stops to be improved, with varying dimensions and ADA classifications (see attachment)

Identify any upcoming projects or projects currently underway adjacent to the proposed project.

Other specific project information that should be considered.

PUBLIC INVOLVEMENT AND SUPPORT

Describe the public outreach and support for the project (i.e. petitions, written endorsements, resolutions, etc.). Attach documentation.

Projects impacting single family residential lots will require additional documentation of public support. Additional documentation must indicate that all property owners directly affected by the improvement were notified, that at least 25 percent of the property owners showed support for the project, and that no more than 10 percent of the property owners showed lack of support.

PROJECT MAINTENANCE

Document ownership and maintenance responsibilities for the project when complete. Applicant's Resolution of Support and commitment to fund operations and maintenance of the project is a required attachment. (See submittal checklist).

COST ESTIMATE

The total construction amount of Transportation Alternative Program funds requested per projects (infrastructure) must be in excess of \$250,000 with a maximum project amount of \$1,000,000.

Transportation Alternative Program funds will be used to fund Construction, Construction Engineering and Inspection Activities (CEI) and FDOT in-house support activities.

Local Funds (LF) will be used for all non-participating items, contingency activities, and any costs in excess of the awarded funding (LI) allocation.

- (a) Provide detailed project cost estimate using one of the following forms. Estimate shall be broken down to eligible and non-eligible project costs. Estimates are to be prepared and signed by a Professional Engineer from the Local Agency's Engineering office.
 - a. On-System (on State Highway System) Cost Estimate Sheet
 - b. Off-System (not on State Highway System) Cost Estimate Sheet

Use the following links to access the basis of estimates manual as well as historical information for the project area.

[Basis of Estimates Manual](#)
[Historical Cost Information](#)

CERTIFICATION OF PROJECT SPONSOR

I hereby certify that the proposed project herein described is supported by Palm Beach County
(*municipal, county, state or federal agency, or tribal council*) and that said entity will:

- 1) provide any funding required in addition to the grant amount;
- 2) enter into a LAP and maintenance agreement with the Florida Department of Transportation;
- 3) have complied with the Federal Uniform Relocation Assistance and Acquisition Policies Act for any Right of Way actions intended for this project previously performed within the project limits;
- 4) will comply with NEPA process prior to construction, which may involve coordination with the State Historic and Preservation Office (SHPO); and
- 5) support other actions necessary to fully implement the proposed project.

I further certify that the estimated costs included herein are reasonable, and that increases in these costs could cause significant increase to the local agency required participation. I understand failure to follow through on the project once programmed in the Florida Department of Transportation's Work Program is not allowed.


Signature

DAVID L. RICKS
Name (*please type or print*)

County Engineer
Title

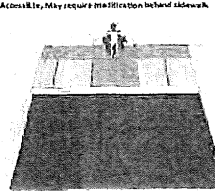
28 FEB 2020
Date

FOR FDOT USE ONLY		
Application Complete	<input type="checkbox"/> Yes	<input type="checkbox"/> No
Project Eligible	<input type="checkbox"/> Yes	<input type="checkbox"/> No
Implementation Feasible	<input type="checkbox"/> Yes	<input type="checkbox"/> No
Include in Work Program	<input type="checkbox"/> Yes	<input type="checkbox"/> No

Cost Estimate Summary by stop type

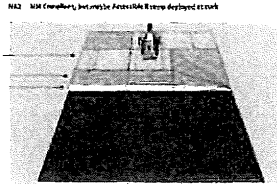
NA1 (Requires Modifications Behind Sidewalk)						Stop ID	
Pay Item No.	Description	Unit	Quantity	Cost/Unit	Cost		
102-1	MOT	LS	21.00	\$402.37	\$8,448.77	696	3842
110-1-1	Clearing and Grubbing	LOC	21.00	\$200.00	\$4,200.00	699	3852
110-4-10	Removal of Existing Concrete	SY	218.33	\$20.13	\$4,395.05	802	4584
522-1-28	4" Concrete Sidewalk	SY	145.56	\$36.76	\$5,350.62	803	4588
522-2-31	6" Concrete Sidewalk	SY	101.11	\$44.24	\$4,473.15	817	6312
570-1-3	Performance Turf(Sod and Soil)	SY	50.00	\$4.04	\$202.00	1107	5968
						1192	6498
						1285	7389
						1452	7639
						1634	
						1650	
						3834	
Total Cost:					\$27,070.59		

NA1 Not Accessible, May require modification behind sidewalk



NA2 (Requires Modifications Behind Curb to Sidewalk)						Stop ID							
Pay Item No.	Description	Unit	Quantity	Cost/Unit	Cost								
102-1	MOT	LS	68.00	\$402.37	\$27,361.16	691	928	1501	2344	3319	5827	6702	
110-1-1	Clearing and Grubbing	LOC	68.00	\$200.00	\$13,600.00	694	929	1523	2504	3373	5669	6806	
110-4-10	Removal of Existing Concrete	SY	636.67	\$20.13	\$12,816.10	702	931	1530	2505	3721	5721		
522-1-28	4" Concrete Sidewalk	SY	424.44	\$36.76	\$15,602.65	781	1075	1647	2511	3840	8182		
522-2-31	6" Concrete Sidewalk	SY	367.22	\$44.24	\$16,245.89	788	1195	1651	2517	3843	8387		
570-1-3	Performance Turf(Sod and Soil)	SY	328.89	\$4.04	\$1,328.71	792	1410	2229	2639	3844	8381		
						796	1445	2231	2650	3845	8415		
						797	1474	2234	3005	3846	8416		
						798	1475	2236	3068	4571	8418		
						800	1476	2308	3071	4574	8420		
						827	1481	2341	3095	5310	8424		
Total Cost:					\$86,954.44								

NA2 Not Accessible, but maybe Accessible if new deployed at curb



NA3 (Requires Modifications from Edge of Pavement to Sidewalk)						Stop ID	
Pay Item No.	Description	Unit	Quantity	Cost/Unit	Cost		
102-1	MOT	LS	27.00	\$402.37	\$10,863.99	711	3239
110-1-1	Clearing and Grubbing	LOC	27.00	\$200.00	\$5,400.00	853	3714
110-4-10	Removal of Existing Concrete	SY	223.89	\$20.13	\$4,506.86	855	3722
436-1-1	Trench Drain	LF	405.00	\$314.11	\$127,214.55	893	3730
522-1-28	4" Concrete Sidewalk	SY	147.78	\$36.76	\$5,432.31	894	5446
522-2-31	6" Concrete Sidewalk	SY	260.00	\$44.24	\$11,502.39	1404	5605
570-1-3	Performance Turf(Sod and Soil)	SY	423.33	\$4.04	\$1,710.26	1415	5735
						1417	6479
						1418	6480
						1423	7604
						1425	7508
						1437	
						1441	
						1535	
						1637	
						3036	
Total Cost:					\$166,630.39		

NA3 (Requires Modifications from Edge of Pavement to Sidewalk)



- 711 3239
- 853 3714
- 855 3722
- 893 3730
- 894 5446
- 1404 5605
- 1415 5735
- 1417 6479
- 1418 6480
- 1423 7604
- 1425 7508
- 1437
- 1441
- 1535
- 1637
- 3036

Summary of Total Costs					
Pay Item No.	Description	Unit	Quantity	Cost/Unit	Cost
102-1	MOT	LS	116.00	\$402.37	\$46,674.92
110-1-1	Clearing and Grubbing	LOC	116.00	\$200.00	\$23,200.00
110-4-10	Removal of Existing Concrete	SY	1078.89	\$20.13	\$21,718.03
436-1-1	Trench Drain	LF	405.00	\$314.11	\$127,214.55
522-1-28	4" Concrete Sidewalk	SY	717.78	\$36.76	\$26,385.61
522-2-31	6" Concrete Sidewalk	SY	728.33	\$44.24	\$32,221.43
570-1-3	Performance Turf(Sod and Soil)	SY	802.22	\$4.04	\$3,240.97
Project Total Cost:					\$280,655.42

Total number of stations to be retrofitted: 116

110-1-1 Historical cost does not reflect mobilization effort required for isolated locations for this activity \$12,790.06/AC
 110-4-10 Includes cost of removing sidewalk on either side of the proposed bus pad for slope transition
 522-1-28 Includes the cost of 4" sidewalk to transition to the 6" bus pad
 700-1-1 10% of total bus stops was used to determine missing signs or replacements
 110-1-1 Historical cost does not reflect mobilization effort required for isolated locations for this activity \$12,790.06/AC

CERTIFICATION OF PROJECT SPONSOR

I hereby certify that the proposed project herein described is supported by Palm Beach County
(*municipal, county, state or federal agency, or tribal council*) and that said entity will:

- 1) provide any funding required in addition to the grant amount;
- 2) enter into a LAP and maintenance agreement with the Florida Department of Transportation;
- 3) have complied with the Federal Uniform Relocation Assistance and Acquisition Policies Act for any Right of Way actions intended for this project previously performed within the project limits;
- 4) will comply with NEPA process prior to construction, which may involve coordination with the State Historic and Preservation Office (SHPO); and
- 5) support other actions necessary to fully implement the proposed project.

I further certify that the estimated costs included herein are reasonable, and that increases in these costs could cause significant increase to the local agency required participation. I understand failure to follow through on the project once programmed in the Florida Department of Transportation’s Work Program is not allowed.

Signature

Dave Kerner

Name (*please type or print*)


Mayor

Title

4/7/2020

Date

**APPROVED AS TO FORM
AND LEGAL SUFFICIENCY**



COUNTY ATTORNEY

FOR FDOT USE ONLY

Application Complete	<input type="checkbox"/> Yes	<input type="checkbox"/> No
Project Eligible	<input type="checkbox"/> Yes	<input type="checkbox"/> No
Implementation Feasible	<input type="checkbox"/> Yes	<input type="checkbox"/> No
Include in Work Program	<input type="checkbox"/> Yes	<input type="checkbox"/> No

Attachment



Palm Tran

Administrative Offices

3201 Electronics Way
West Palm Beach, FL 33407-4618
(561) 841-4200
FAX: (561) 841-4291

Palm Tran Connection

50 South Military Trail
Suite 101
West Palm Beach, FL 33415-3132
(561) 649-9838
FAX: (561) 656-7156
www.palmtran.org



**Palm Beach County
Board of County
Commissioners**

Dave Kerner, Mayor
Robert S. Weinroth, Vice Mayor
Hal R. Valeche
Gregg K. Weiss
Mary Lou Berger
Melissa McKinlay
Mack Bernard

County Administrator

Verdenia C. Baker

"An Equal Opportunity
Affirmative Action Employer"

Official Electronic Letterhead

February 28, 2020

Nick Uhren, P.E. Executive Director
Palm Beach Transportation Planning Agency
301 Datura Street
West Palm Beach FL. 33401

Subject: Palm Tran's Transportation Alternatives Grant Program

Dear Mr. Uhren:

The Palm Beach County Engineering Department sponsors Palm Tran's grant for the TPA's Transportation Alternatives Program (TAP) funding to install enhanced Americans with Disabilities Act (ADA) accessible bus stops at various locations throughout the County. The infrastructure improvements include concrete boarding and alighting areas for residents and visitors to easily access our transit system.

This proposed project is consistent with the County's strategic plan to improve neighborhood infrastructure. If the project is selected by the TPA, the Engineering Department will take the lead in implementing it. The 116 bus stops selected are all on County-owned roadways and will be maintained in perpetuity by Palm Tran's bus stop maintenance program. All costs over the amount approved by the TPA will be the responsibility of Palm Tran.

The TAP funding will allow the Engineering Department to work with Palm Tran to design the project in FY2022 and begin construction in 2024.

Should you have any questions or need additional information, please contact our office.

Sincerely,

David L. Ricks, P.E.
County Engineer
Engineering and Public Works

APPLICANT CONTACT INFORMATION

Contact Person Steve Anderson
Title Interim Director of Transit Planning
Email sanderson@pbcgov.org
Phone Number 561-841-4246
Address

PROJECT LOCATION

Road Name Multiple County Roads and multiple locations
Road Number County Roads only

Project Limit Begin Palm Beach County
Project Limit End Palm Beach County

QUALIFYING ACTIVITIES FOR FUNDING

Check the box Transportation Alternatives activity that represents the majority of the work the proposed project will address. Eligible activities must be consistent with details described under 23 U.S.C. 133(h)(3).

- Construction of on-road and off-road trail facilities for pedestrians, bicyclists, and other non-motorized forms of transportation, including sidewalks, bicycle infrastructure, pedestrian and bicycle signals, traffic calming techniques, lighting and other safety-related infrastructure, and transportation projects to achieve compliance with the Americans with Disabilities Act of 1990
- Construction of infrastructure-related projects and systems that will provide safe routes for non-drivers, including children, older adults, and individuals with disabilities to access daily needs.
- Conversion and use of abandoned railroad corridors for trails for pedestrians, bicyclists, or other non-motorized transportation users
- Safe Routes to School non-infrastructure-related activities to encourage walking and bicycling to school, including public awareness campaigns and outreach to press and community leaders, traffic education and enforcement in the vicinity of schools, student sessions on bicycle and pedestrian safety, health, and environment, and funding for training, volunteers, and managers of safe routes to school programs. *Note, Florida’s Safe Routes to School Infrastructure application must accompany this application to be considered for funding.*
- Application attached
- Other eligible activities not specified above

PROJECT TYPICAL SECTION INFORMATION

Complete the following information for existing & proposed features, dimensions, & right of way lines. The typical section information provides an understanding of the spacing requirement differences between the existing facilities and the proposed facilities.

	EXISTING	PROPOSED
RIGHT-OF-WAY WIDTH Project must fit within current ROW, acquisition is not permitted		
PEDESTRIAN OR MULTIUSE FACILITIES		
Length (miles) for one direction. Do not count both sides of roadway.		
Width on North or West side (feet)*	n/a	n/a
Width on South or East side (feet)*	n/a	n/a
BICYCLE FACILITIES		
Bike Lane Length (feet) for one direction. Do not count both sides of roadway.		
Width on North or West side (feet)* (not Including Buffer Width)	n/a	n/a
Buffer Width on North or West side (feet)*	n/a	n/a
Width on South or East side (feet)* (not Including Buffer Width)	n/a	n/a
Buffer Width on South or East side (feet)*	n/a	n/a
Proposed improvements requires:		
Pavement widening <input type="checkbox"/> Sharrows <input type="checkbox"/> Restriping <input type="checkbox"/>		
MOTORIZED VEHICLE FACILITIES		
Number of Through Travel Lanes		
Typical Through Lane Width (feet)		
Total Width* (No. Travel Lanes x Lane Width)	n/a	n/a
Posted Speed Limit		
Design Speed (if known)		
MEDIAN/SWALE/CURB		
Median/Center Turning Lane Width (feet)*	n/a	n/a
Swale Width (feet)*	n/a	n/a
Curb Width (feet)*	n/a	n/a
*TOTAL WIDTH OF ALL COMPONENTS (Add all rows with red for total width) Must fit within existing right-of-way.	0	0

RIGHT-OF-WAY OWNERSHIP DOCUMENTATION

Describe the project's existing right-of-way ownerships. This description shall identify when the right-of-way was acquired and how ownership is documented (i.e. plats, deeds, prescriptions, certified surveys, easements). If right-of-way is an easement, please describe the easement language. Right-of-way ownership verification documents are a required attachment (see submittal checklist on page 9).

Entire project (all bus stops) is within County Right-of-Way (ROW) adjacent to County roads that are owned and maintained by the County. See attachment for verification.

PROJECT SCOPE OF WORK

Describe how the proposed improvements will affect the following:

ADA items (crosswalks, sidewalks, ramps, etc.)

All proposed crosswalks, sidewalks, ramps, etc. comply with ADA standards YES NO

Project will turn non-ADA compliant bus stops into compliant bus stops with the addition of a minimum 5' wide sidewalk connection.

Access Management revisions (median modifications, impacts to driveways, etc.) YES NO

Pedestrian and/or Roadway Lighting

Pedestrian lighting proposed YES NO

Roadway lighting proposed YES NO

Landscape (with Local Funds)

Median landscape proposed YES NO

Other landscape proposed YES NO

Irrigation items proposed YES NO

Signalization

Pedestrian signals proposed YES NO

Existing signalization to be replaced YES NO

New traffic signalization proposed YES NO

Transit Improvements

Queue jump possible YES NO

Transit provider concurrence provided YES NO

Upgrade existing bus bay area YES NO

School Zone Modifications

Existing flashing school zone signal on state road YES NO

High emphasis cross walk at unsignalized crossing YES NO

Utility Modifications

Sub-surface relocation is required YES NO

Utility coordination is required YES NO

Drainage and/or other Permits

Existing closed drainage system to remain YES NO

Existing open drainage system to remain YES NO

Railroad Crossing Modifications

Rail crossing within limits YES NO

Replace railroad signal equipment and gates YES NO

Bridge Modifications

Proposed pedestrian bridge YES NO

Bridge replacement YES NO

Proposed bridge widening YES NO

Other Scope Items

Summarize any special characteristics of the project.

116 Bus stops to be improved, with varying dimensions and ADA classifications (see attachment)

Identify any upcoming projects or projects currently underway adjacent to the proposed project.

Other specific project information that should be considered.

PUBLIC INVOLVEMENT AND SUPPORT

Describe the public outreach and support for the project (i.e. petitions, written endorsements, resolutions, etc.). Attach documentation.

Projects impacting single family residential lots will require additional documentation of public support. Additional documentation must indicate that all property owners directly affected by the improvement were notified, that at least 25 percent of the property owners showed support for the project, and that no more than 10 percent of the property owners showed lack of support.

PROJECT MAINTENANCE

Document ownership and maintenance responsibilities for the project when complete. Applicant's Resolution of Support and commitment to fund operations and maintenance of the project is a required attachment. (See submittal checklist).

COST ESTIMATE

The total construction amount of Transportation Alternative Program funds requested per projects (infrastructure) must be in excess of \$250,000 with a maximum project amount of \$1,000,000.

Transportation Alternative Program funds will be used to fund Construction, Construction Engineering and Inspection Activities (CEI) and FDOT in-house support activities.

Local Funds (LF) will be used for all non-participating items, contingency activities, and any costs in excess of the awarded funding (LI) allocation.

- (a) Provide detailed project cost estimate using one of the following forms. Estimate shall be broken down to eligible and non-eligible project costs. Estimates are to be prepared and signed by a Professional Engineer from the Local Agency's Engineering office.
 - a. On-System (on State Highway System) Cost Estimate Sheet
 - b. Off-System (not on State Highway System) Cost Estimate Sheet

Use the following links to access the basis of estimates manual as well as historical information for the project area.

[Basis of Estimates Manual](#)
[Historical Cost Information](#)

CERTIFICATION OF PROJECT SPONSOR

I hereby certify that the proposed project herein described is supported by Palm Beach County
(municipal, county, state or federal agency, or tribal council) and that said entity will:

- 1) provide any funding required in addition to the grant amount;
- 2) enter into a LAP and maintenance agreement with the Florida Department of Transportation;
- 3) have complied with the Federal Uniform Relocation Assistance and Acquisition Policies Act for any Right of Way actions intended for this project previously performed within the project limits;
- 4) will comply with NEPA process prior to construction, which may involve coordination with the State Historic and Preservation Office (SHPO); and
- 5) support other actions necessary to fully implement the proposed project.

I further certify that the estimated costs included herein are reasonable, and that increases in these costs could cause significant increase to the local agency required participation. I understand failure to follow through on the project once programmed in the Florida Department of Transportation's Work Program is not allowed.


Signature

DAVID L. RICKS
Name (please type or print)

County Engineer
Title

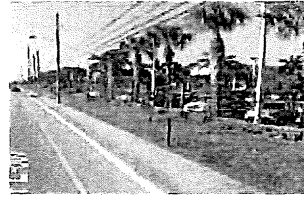
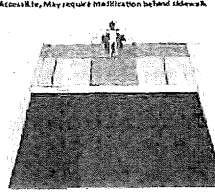
28 FEB 2020
Date

FOR FDOT USE ONLY		
Application Complete	<input type="checkbox"/> Yes	<input type="checkbox"/> No
Project Eligible	<input type="checkbox"/> Yes	<input type="checkbox"/> No
Implementation Feasible	<input type="checkbox"/> Yes	<input type="checkbox"/> No
Include in Work Program	<input type="checkbox"/> Yes	<input type="checkbox"/> No

Cost Estimate Summary by stop type

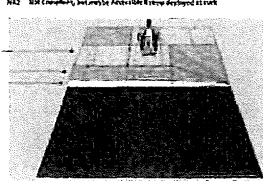
NA1 (Requires Modifications Behind Sidewalk)						Stop ID	
Pay Item No.	Description	Unit	Quantity	Cost/Unit	Cost		
102-1	MOT	LS	21.00	\$402.37	\$8,449.77	696	3842
110-1-1	Clearing and Grubbing	LOC	21.00	\$200.00	\$4,200.00	699	3852
110-4-10	Removal of Existing Concrete	SY	218.33	\$20.13	\$4,396.05	802	4584
522-1-28	4" Concrete Sidewalk	SY	145.59	\$36.76	\$5,350.52	803	4588
522-2-31	6" Concrete Sidewalk	SY	101.11	\$44.24	\$4,473.15	817	5312
570-1-3	Performance Turf(Sod and Soil)	SY	50.00	\$4.04	\$202.00	1107	5368
						1102	5498
						1285	7389
						1462	7638
						1534	
						1580	
						3834	
Total Cost: \$27,070.59							

NA1 Not Accessible, May require Mobilization behind sidewalk



NA2 (Requires Modifications Behind Curb to Sidewalk)						Stop ID									
Pay Item No.	Description	Unit	Quantity	Cost/Unit	Cost										
102-1	MOT	LS	68.00	\$402.37	\$27,361.16	691	928	1501	2344	3319	5827	6702			
110-1-1	Clearing and Grubbing	LOC	68.00	\$200.00	\$13,600.00	694	829	1523	2504	3373	5693	6806			
110-4-10	Removal of Existing Concrete	SY	638.67	\$20.13	\$12,816.10	702	881	1530	2506	3721	5721				
522-1-28	4" Concrete Sidewalk	SY	424.44	\$36.76	\$15,602.66	781	1075	1547	2511	3940	6192				
522-2-31	6" Concrete Sidewalk	SY	367.22	\$44.24	\$16,245.89	788	1195	1551	2517	3843	6337				
570-1-3	Performance Turf(Sod and Soil)	SY	328.89	\$4.04	\$1,328.71	792	1410	2229	2639	3844	6381				
						796	1445	2231	2650	3845	6415				
						797	1474	2234	3005	3846	6416				
						798	1475	2236	3066	4571	8418				
						800	1476	2308	3071	4574	8420				
						827	1481	2341	3095	5310	8424				
Total Cost: \$86,954.44															

NA2 Not Accessible, but may be Accessible if properly deployed at curb



NA3 (Requires Modifications from Edge of Pavement to Sidewalk)						Stop ID												
Pay Item No.	Description	Unit	Quantity	Cost/Unit	Cost													
102-1	MOT	LS	27.00	\$402.37	\$10,863.99	711	3239											
110-1-1	Clearing and Grubbing	LOC	27.00	\$200.00	\$5,400.00	853	3714											
110-4-10	Removal of Existing Concrete	SY	223.89	\$20.13	\$4,506.86	855	3722											
436-1-1	Trench Drain	LF	405.00	\$314.11	\$127,214.55	893	3730											
522-1-28	4" Concrete Sidewalk	SY	147.78	\$36.76	\$5,432.31	894	5446											
522-2-31	6" Concrete Sidewalk	SY	260.00	\$44.24	\$11,502.39	1404	5805											
570-1-3	Performance Turf(Sod and Soil)	SY	423.33	\$4.04	\$1,710.26	1415	5735											
						1417	6479											
						1418	6480											
						1423	7504											
						1425	7508											
						1437												
						1441												
						1535												
						1537												
						3056												
Total Cost: \$166,630.39																		

Summary of Total Costs

Pay Item No.	Description	Unit	Quantity	Cost/Unit	Cost	Total number of stations to be retrofitted:	116
102-1	MOT	LS	116.00	\$402.37	\$46,674.92		
110-1-1	Clearing and Grubbing	LOC	116.00	\$200.00	\$23,200.00		
110-4-10	Removal of Existing Concrete	SY	1078.89	\$20.13	\$21,719.03		
436-1-1	Trench Drain	LF	405.00	\$314.11	\$127,214.55		
522-1-28	4" Concrete Sidewalk	SY	717.78	\$36.76	\$26,385.81		
522-2-31	6" Concrete Sidewalk	SY	728.33	\$44.24	\$32,221.48		
570-1-3	Performance Turf(Sod and Soil)	SY	802.22	\$4.04	\$3,240.97		
Project Total Cost: \$280,655.42							

110-1-1 Historical cost does not reflect mobilization effort required for isolated locations for this activity \$12,790.08/AC
 110-4-10 Includes cost of removing sidewalk on either side of the proposed bus pad for slope transition
 522-1-28 Includes the cost of 4" sidewalk to transition to the 6" bus pad
 700-1-11 10% of total bus stops was used to determine missing signs or replacements
 110-1-1 Historical cost does not reflect mobilization effort required for isolated locations for this activity \$12,790.08/AC

CERTIFICATION OF PROJECT SPONSOR

I hereby certify that the proposed project herein described is supported by Palm Beach County
(*municipal, county, state or federal agency, or tribal council*) and that said entity will:

- 1) provide any funding required in addition to the grant amount;
- 2) enter into a LAP and maintenance agreement with the Florida Department of Transportation;
- 3) have complied with the Federal Uniform Relocation Assistance and Acquisition Policies Act for any Right of Way actions intended for this project previously performed within the project limits;
- 4) will comply with NEPA process prior to construction, which may involve coordination with the State Historic and Preservation Office (SHPO); and
- 5) support other actions necessary to fully implement the proposed project.

I further certify that the estimated costs included herein are reasonable, and that increases in these costs could cause significant increase to the local agency required participation. I understand failure to follow through on the project once programmed in the Florida Department of Transportation's Work Program is not allowed.

Signature

Dave Kerner

Name (*please type or print*)


Mayor

Title

4/7/2020

Date

**APPROVED AS TO FORM
AND LEGAL SUFFICIENCY**



COUNTY ATTORNEY
COUNTY

FOR FDOT USE ONLY

Application Complete	<input type="checkbox"/> Yes	<input type="checkbox"/> No
Project Eligible	<input type="checkbox"/> Yes	<input type="checkbox"/> No
Implementation Feasible	<input type="checkbox"/> Yes	<input type="checkbox"/> No
Include in Work Program	<input type="checkbox"/> Yes	<input type="checkbox"/> No

Attachment



Palm Tran

Administrative Offices

3201 Electronics Way
West Palm Beach, FL 33407-4618
(561) 841-4200
FAX: (561) 841-4291

Palm Tran Connection

50 South Military Trail
Suite 101
West Palm Beach, FL 33415-3152
(561) 649-9838
FAX: (561) 656-7156
www.palmtran.org



**Palm Beach County
Board of County
Commissioners**

Dave Kerner, Mayor
Robert S. Weinroth, Vice Mayor
Hal R. Valeche
Gregg K. Weiss
Mary Lou Berger
Melissa McKinlay
Mack Bernard

County Administrator

Verdenia C. Baker

*"An Equal Opportunity
Affirmative Action Employer"*

Official Electronic Letterhead

February 28, 2020

Nick Uhren, P.E. Executive Director
Palm Beach Transportation Planning Agency
301 Datura Street
West Palm Beach FL. 33401

Subject: Palm Tran's Transportation Alternatives Grant Program

Dear Mr. Uhren:

The Palm Beach County Engineering Department sponsors Palm Tran's grant for the TPA's Transportation Alternatives Program (TAP) funding to install enhanced Americans with Disabilities Act (ADA) accessible bus stops at various locations throughout the County. The infrastructure improvements include concrete boarding and alighting areas for residents and visitors to easily access our transit system.

This proposed project is consistent with the County's strategic plan to improve neighborhood infrastructure. If the project is selected by the TPA, the Engineering Department will take the lead in implementing it. The 116 bus stops selected are all on County-owned roadways and will be maintained in perpetuity by Palm Tran's bus stop maintenance program. All costs over the amount approved by the TPA will be the responsibility of Palm Tran.

The TAP funding will allow the Engineering Department to work with Palm Tran to design the project in FY2022 and begin construction in 2024.

Should you have any questions or need additional information, please contact our office.

Sincerely,

A handwritten signature in cursive script, appearing to read "David L. Ricks".

David L. Ricks, P.E.
County Engineer
Engineering and Public Works