

**PALM BEACH COUNTY
BOARD OF COUNTY COMMISSIONERS**

WORKSHOP SUMMARY

Meeting Date: September 22, 2020

Department: Community Services

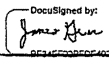
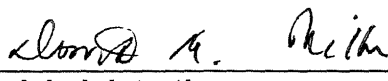
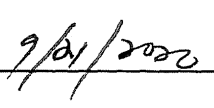
I. EXECUTIVE BRIEF

Title: Opioid Epidemic Response: The Palm Beach County Experience

Summary: Staff from the Community Services Department (the Department), Substance Use Disorder/Behavioral Health section, will provide an update to the County's opioid response efforts and the systemic challenges in achieving strategic objectives. The Department will also present their work related to Recovery-Oriented Systems of Care; recovery capital measuring and monitoring; as well as, past, current and planned efforts by the Department and its strategic partners.

Background and Policy Issues: The Board of County Commissioners (BCC) adopted an Opioid Response Plan (ORP) in the spring of 2017 to guide its opioid epidemic efforts. The root causes of the epidemic discovered through the ORP's analysis process were found to be complex which would require an integrated community response to make meaningful changes. The report documented the absence of a coordinated response effort and stated most agencies were operating within their individual silos or 'spheres of influence'. The ORP made recommendations and identified strategic areas of focus and action steps for a path forward. The BCC subsequently identified the opioid epidemic, behavioral health, and substance use disorder as a high strategic priority and adopted a strategic goal to establish a system of care that was person-centered and recovery-oriented, which has, at its heart, neutral care coordination in order to improve quality of care and long-term recovery outcomes. Establishing a mechanism for oversight was a key component to successfully implementing the ORP. In 2018, the BCC created a position to lead coordination efforts throughout the County and the Substance Use Disorder/Behavioral Health section was created within the Community Services Department. The Department, along with key strategic partners, continue to champion and bring federal, state and local resources to bear in order to achieve long-term recovery outcome and quality of care improvements through planning, developing and executing a comprehensive recovery-centric and recovery-oriented system of care model. Countywide (HH)

Attachments: PowerPoint

Recommended by:	 _____ Department Director	9/16/2020 _____ Date
Approved By:	 _____ County Administration	 _____ Date

II. FISCAL IMPACT ANALYSIS

A. Five Year Summary of Fiscal Impact:

Fiscal Years	2020	2021	2022	2023	2024
Capital Expenditures					
Operating Costs					
External Revenues					
Program Income(County)					
In-Kind Match(County)					
NET FISCAL IMPACT					
#ADDITIONAL FTE POSITIONS (CUMULATIVE					

Is Item Included in Current Budget? Yes ___ No ___
 Does this item include the use of federal funds? Yes ___ No ___

Budget Account No:

Fund Agency Organization Object

B. Recommended Sources of Funds/Summary of Fiscal Impact:

C. Departmental Fiscal Review:

III. REVIEW COMMENTS:

A. OFMB Fiscal and/or Contract Dev. and Control Comments:

Paige Rawls 9/18/2020
PA 117 OFMB AP 9/17

Dr. G. Jacoby 9/18/2020
Contract Dev. & Control

B. Legal Sufficiency

[Signature]
Assistant County Attorney 9/18/2020

C. Other Department Review

 Department Director

(THIS SUMMARY IS NOT TO BE USED AS A BASIS FOR PAYMENT.)

Opioid Epidemic Response: ***The Palm Beach County Experience***

**Community Services Department
Substance Use Disorder /
Behavioral Health Section**

Board of County Commissioners

Presentation

September 22, 2020

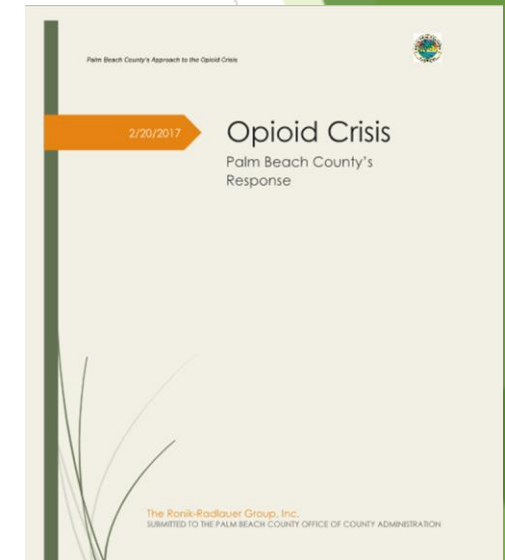


OPIOID EPIDEMIC RESPONSE PLAN

- Found the root causes were complex and require an integrated community response to make meaningful changes.
- Documented a glaring absence of a coordinated response effort and stated most agencies were operating within their individual silos or 'spheres of influence'.

Summary of Recommendations

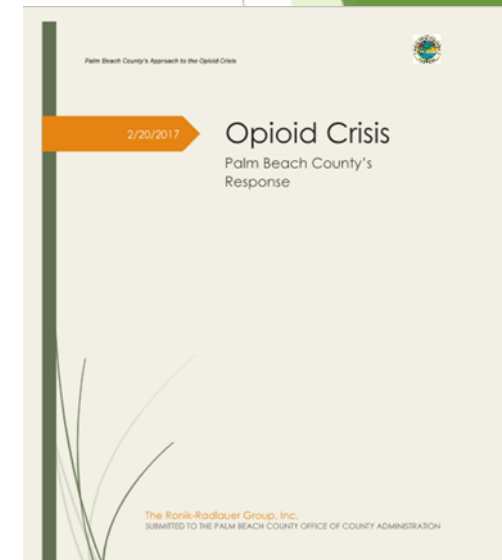
- Create a coordinated response through the designation of a primary entity responsible for the integration of all efforts relative to the epidemic.
- Provide prevention and education throughout the community.
- Expand options for access to treatment and provide oversight and monitoring.
- Support approaches to public safety and law enforcement.



OPIOID EPIDEMIC RESPONSE PLAN

Summary of Recommendations, continued

- Understand the importance of the social determinants of health and create opportunities for success through the provision of necessary ancillary services.
- Advance change through public policy and legislative advocacy.
- Support strategies to reduce illicit supply and demand.
- Generate and implement a comprehensive evaluation plan to monitor and measure achievement.
- Appoint a County “Drug Czar” and establish an ORP steering committee focused on seven strategic areas:
 - Leadership
 - Prevention and Education
 - Treatment (and Recovery)
 - Public Safety and Law Enforcement
 - Public Policy
 - Ancillary (Essential) Services
 - Evaluation and Monitoring

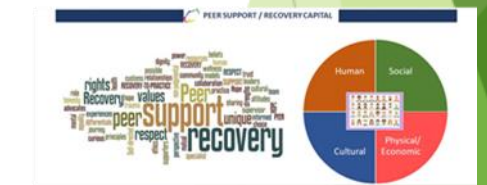


BCC STRATEGIC PRIORITY

Substance Use and Behavior Disorder

“To address substance use and behavior disorders by providing evidence-based prevention, medication-assisted treatment, and recovery support services.”

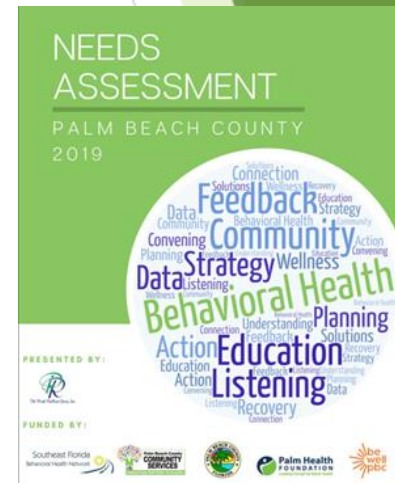
- Establish a readily accessible, integrated and coordinated recovery-oriented system of care that commits to quality, evidence-based addiction and mental health services and integration of the Addiction Stabilization Facility
- Promote best practices and innovative strategies and programming to reduce:
 - drug-related deaths and overdoses
 - drug-related infectious diseases and medical complications
 - crime related to substance use and behavior disorders



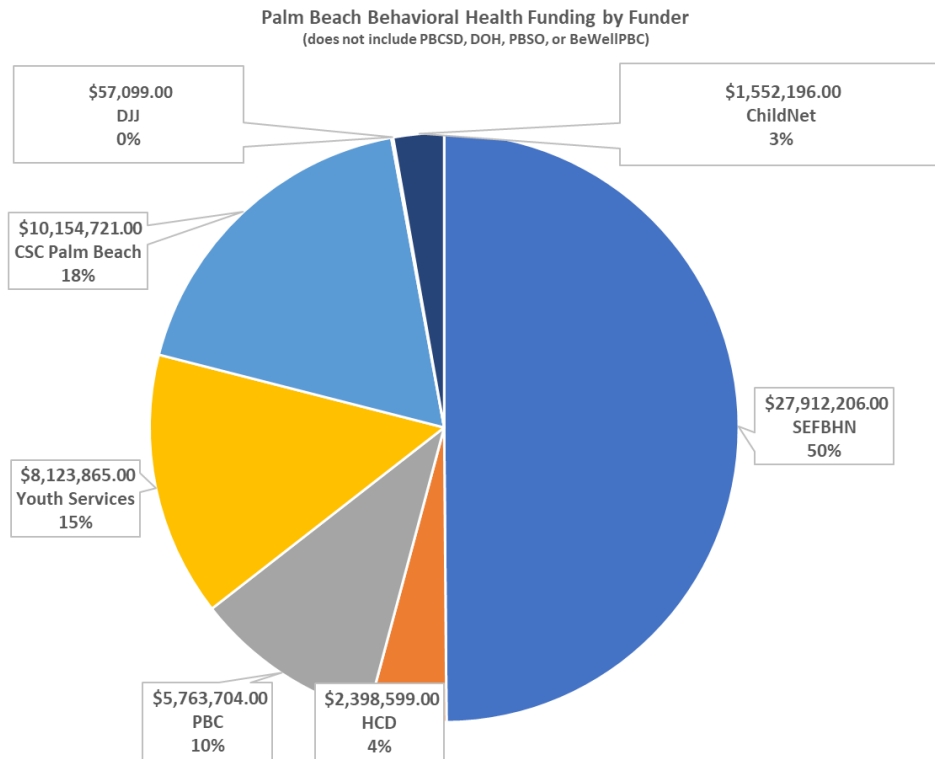
PBC BEHAVIORAL HEALTH NEEDS ASSESSMENT 2019

Common themes during qualitative analysis:

- Need for system collaboration
- Need to understand co-occurring psychiatric, substance use, and other complex conditions
- Utilize evidence-based practices
- Critical to focus on social determinants of health
- Expand community education and engagement
- Expand and enhance peer support
- Address health disparities, equity and cultural competence
- Capacity building for the behavioral health profession



PBC BEHAVIORAL HEALTH NEEDS ASSESSMENT 2019

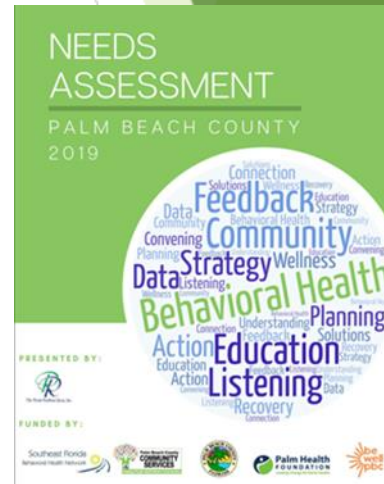


Funding Analysis

- \$55,962,390 total spending
- 55,437 individuals/families served

Funding broken into:

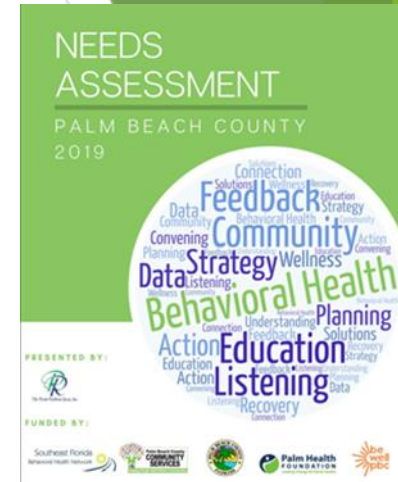
- Service: (Prevention, Support, Community-Based Services, Deep-End Services, Team-Based Services, Incidentals)
- Population (Children/Youth, Adult, Families, Unspecified or All)
- Category (MH, SA, SA/MH)



PBC BEHAVIORAL HEALTH NEEDS ASSESSMENT 2019

Recommendations

- Develop a common language across systems.
- Enhance “no wrong door policies and practices” and development of a central assessment and care coordination system for the community. Continued utilization of system-wide evidence-based practices including the development of true Recovery-Oriented Systems of Care (ROSC) and a comprehensive implementation of care coordination and wraparound services.
- Provide peer support in other systems beyond behavioral health and child welfare.
- Prioritization funding for co-occurring psychiatric, substance use, and other complex conditions.
- CSD focus its funding allocations on the Support Services category.



ORP STEERING COMMITTEE

Community Forum Review and Analysis:

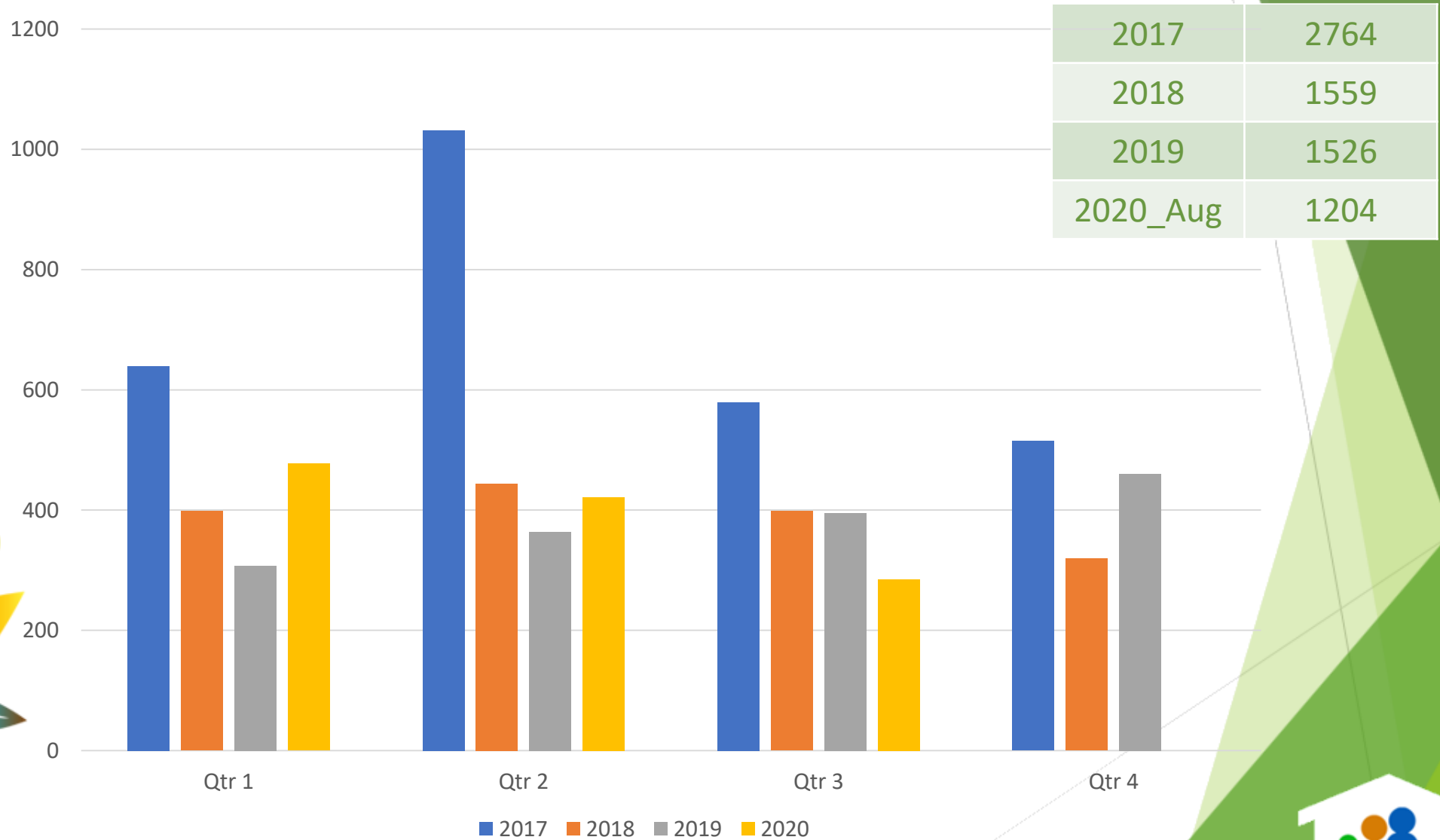
- Need for better collaboration, alignment, and partnering between entities.
- Need to address social determinants of health such as housing, transportation, education, and employment.
- Need for integration of SUD and BHD services (i.e. multi-occurring diagnoses).
- Need for adequate safe recovery housing and facilities.
- Elimination of inequity and disparity challenges.

Recommendations

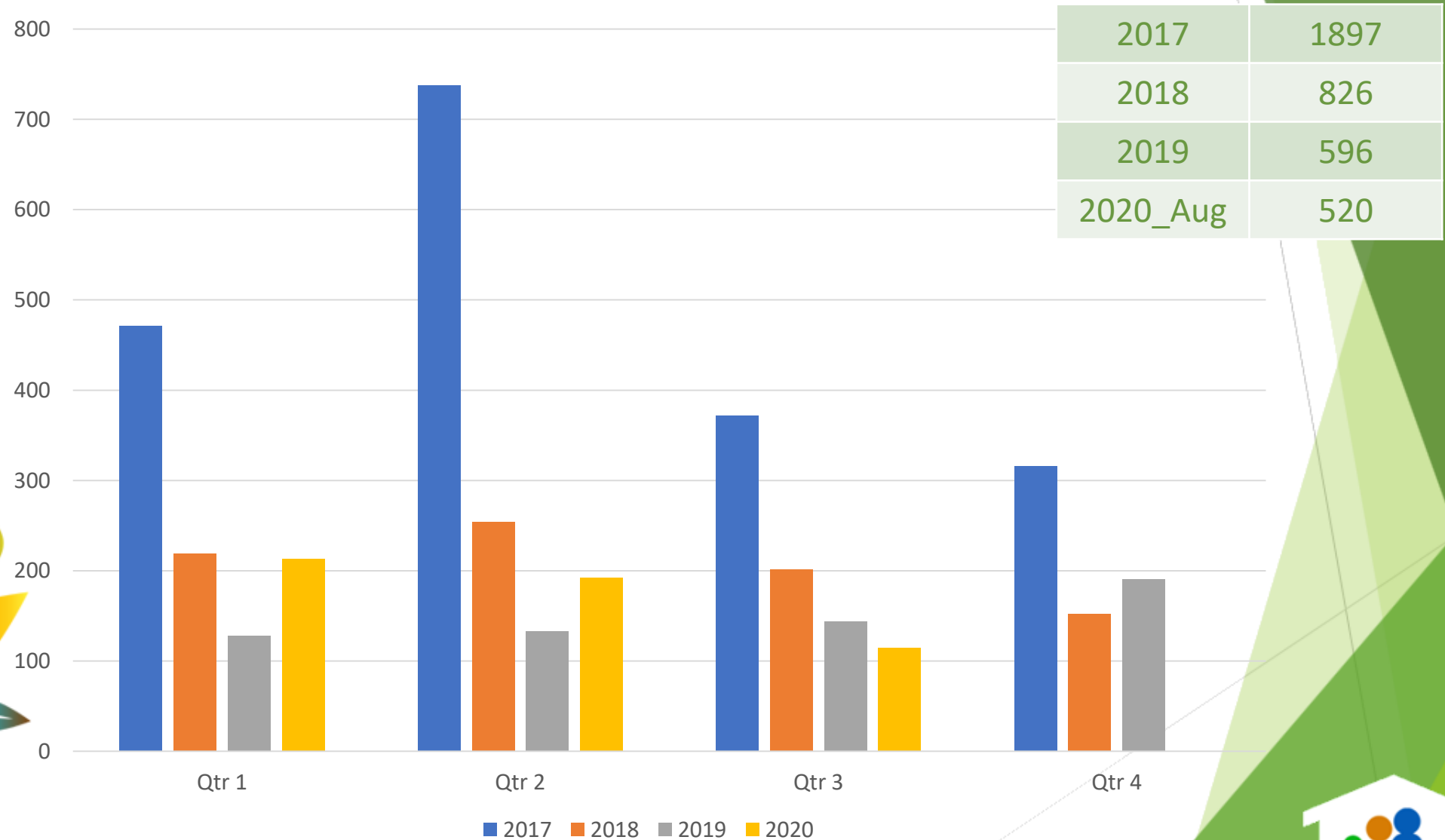
- Better execute the patient-centric model of care requiring the establishment of a neutral care coordination entity.
- Support to build a ROSC community.



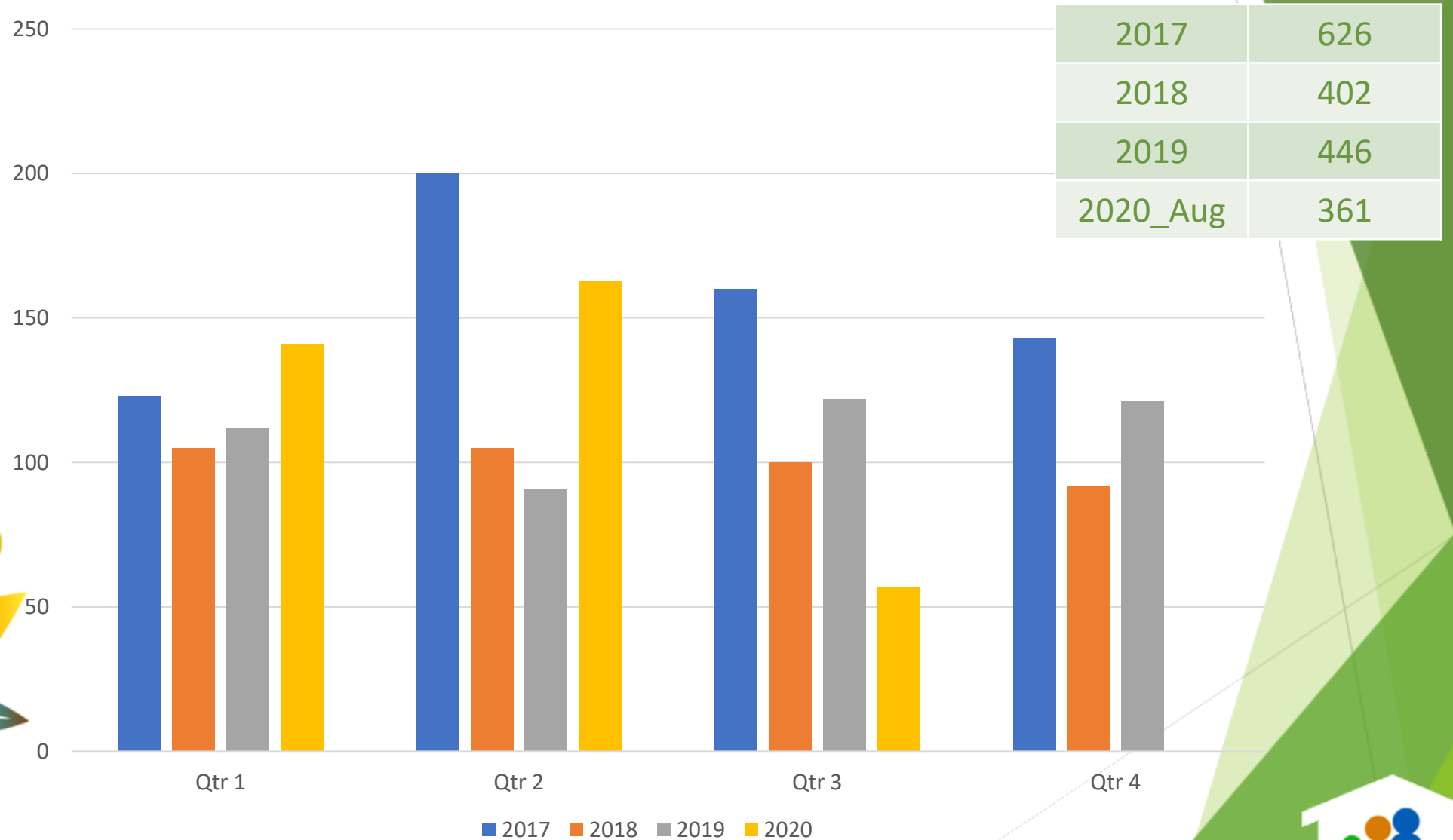
PBC Fire Rescue - Number of Calls



PBC FIRE RESCUE – NARCAN ADMINISTERED



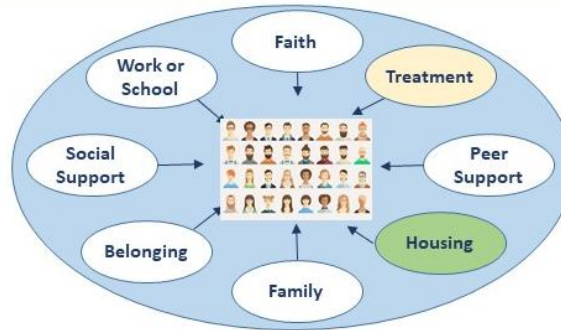
PBC MEDICAL EXAMINER – OPIOID OD DEATHS



PERSON-CENTERED, RECOVERY-ORIENTED SYSTEM OF CARE

CARE PROVIDERS NETWORK

Recovery Oriented System of Care



RECOVERY, RESILIENCE & SELF-DETERMINATION

Why Create a ROSC in Florida?

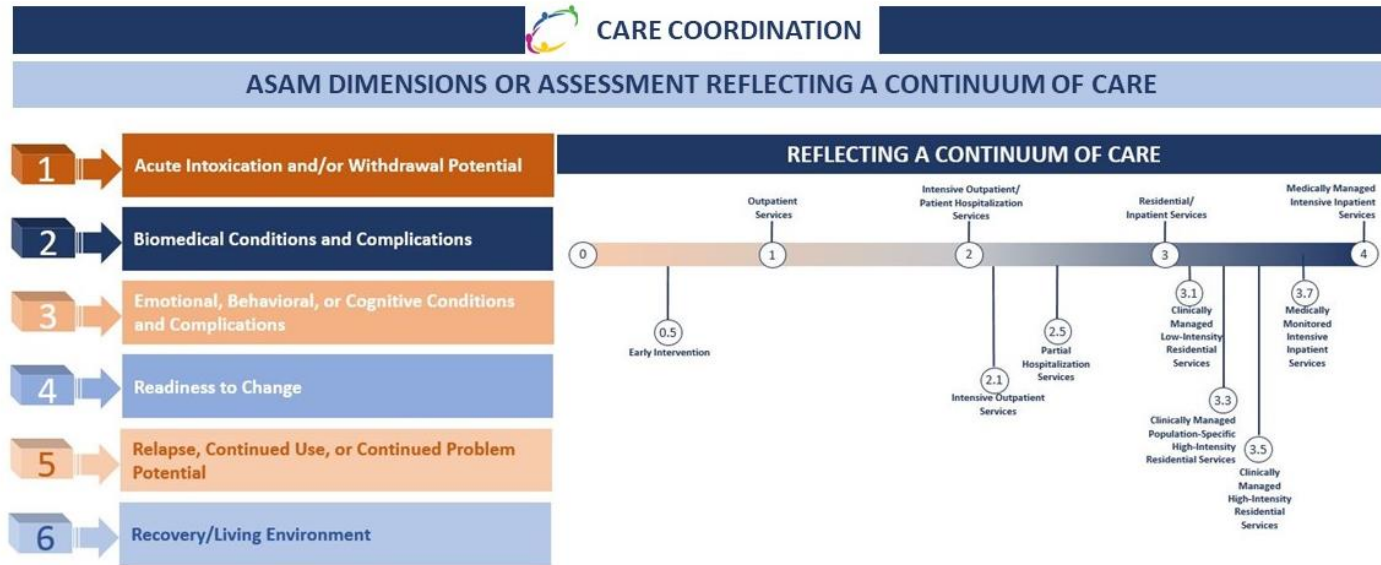
“A ROSC is a network of clinical and nonclinical services and supports that sustain long-term community-based recovery. As local, organic entities, ROSCs reflect variations in each community’s vision, institutions, resources and priorities”

- FLDCF, Creating ROSC in Florida – A Winter 2017 Summary,

- A coordinated network of community-based services and supports that is person-centered and builds on the strengths and resilience of individuals, families, and communities to achieve improved health, wellness, and quality of life for those with or at risk of alcohol and drug problems.
- Provide self-directed approaches which respect the role of personal choice and commitment in pursuit of health and wellness.



PERSON-CENTERED, RECOVERY-ORIENTED SYSTEM OF CARE



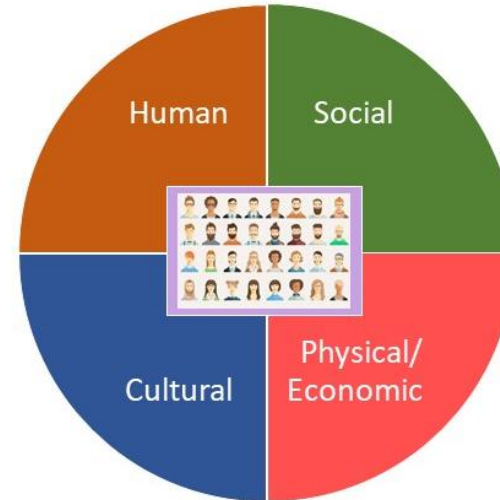
- Neutral Care Coordination Entity central to the system of care.
- Provide assessment, referral and care coordination services oriented toward individualized service plans unique to the individuals' needs and consideration of their choices.
- Will expand capacity by reducing lapse into deep-end services; improve quality of care and long-term recovery outcomes; produce cost savings for re-investment into social determinants of health.



PERSON-CENTERED, RECOVERY-ORIENTED SYSTEM OF CARE



PEER SUPPORT / RECOVERY CAPITAL



- Peer support facilitates recovery and reduces health care costs. Peer support is often coupled with recovery support services which include access to evidence-based practices such as supported employment, education, and housing; assertive community treatment; illness management; and peer-operated services.



PERSON-CENTERED, RECOVERY-ORIENTED SYSTEM OF CARE

*“Recovery hubs
facilitating “one-stop
shopping” in the accrual
of recovery capital.”*

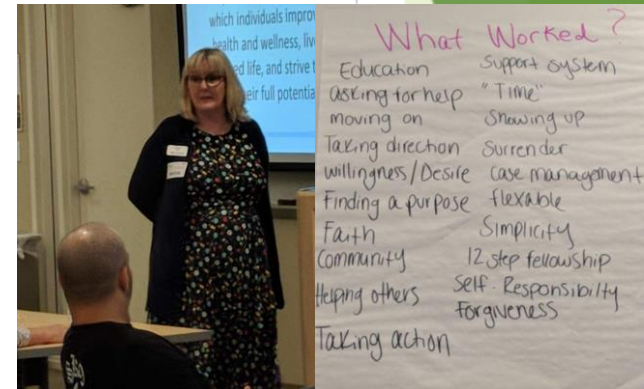
Dr. John Kelly,
Harvard Medical School
Recovery Research Institute

Recovery Community Organizations and Centers

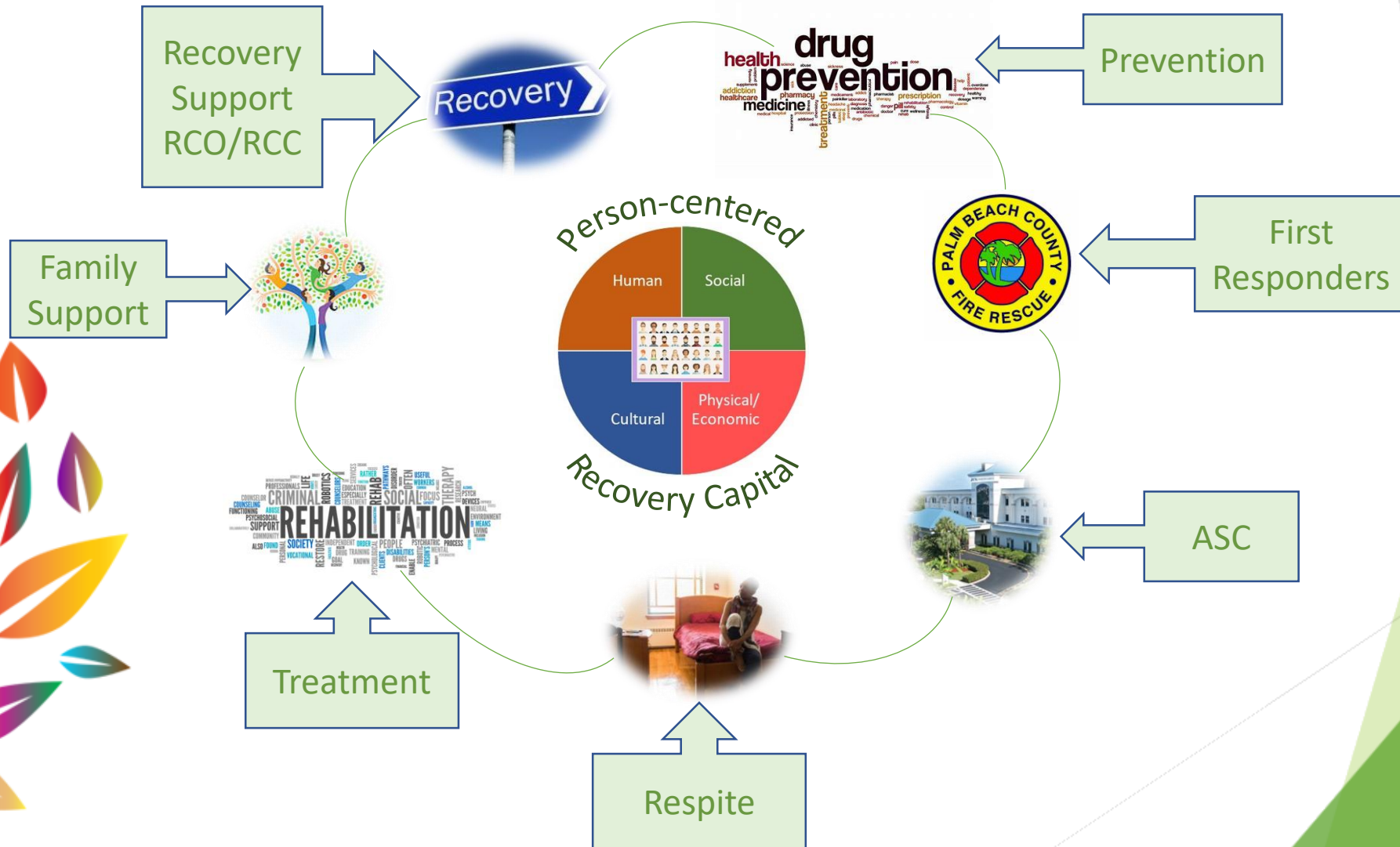
- Activities and services led and driven by appropriately trained volunteers and peers. All pathways to recovery respected.
- Provide peer recovery support services to promote recovery in a supportive environment.
- Access training; social, educational and recreational opportunities; information about treatment, recovery support and other resources.

Outcomes

- Helps vulnerable individuals beginning recovery with few resources low capital.
- Offers value to many others in the early years of recovery stabilization and beyond.
- Provides a unique function in helping participants build recovery capital; increase quality of life and self-esteem; and, decrease psychological distress.

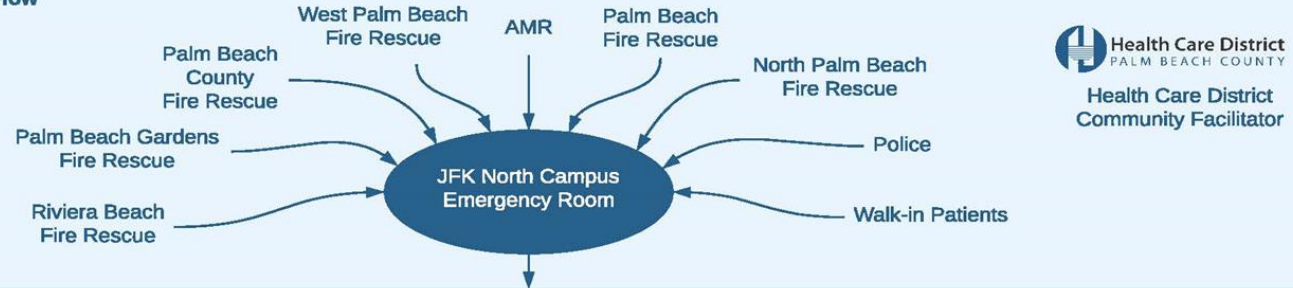


OPIOID EPIDEMIC RESPONSE INITIATIVES



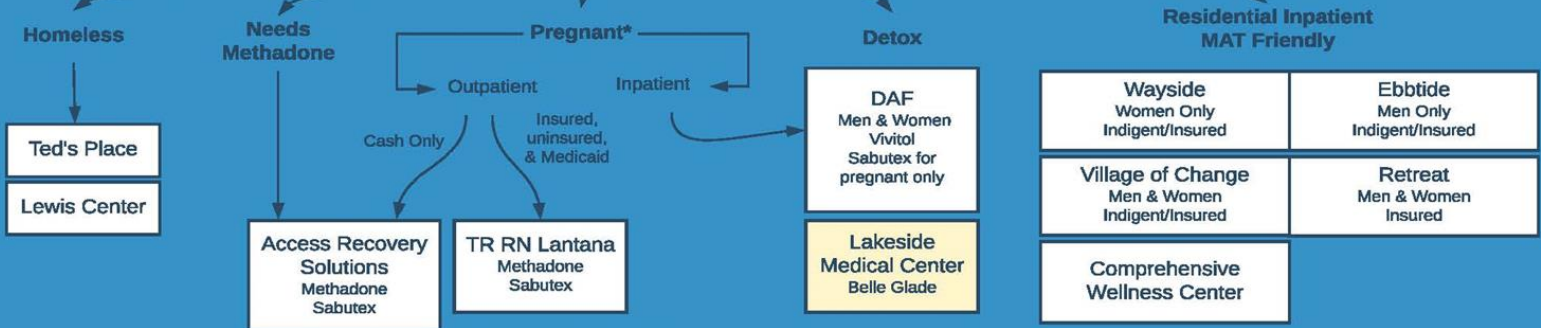
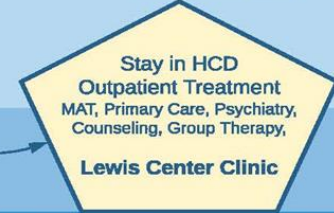
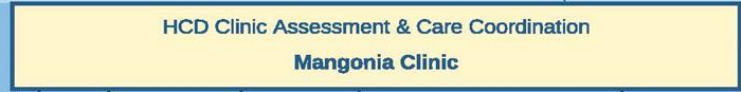
HCD – CURRENT ASU PATIENT FLOW

Current ASU Patient Flow
August 2020



Outside Agency

Patient insured?
Yes No



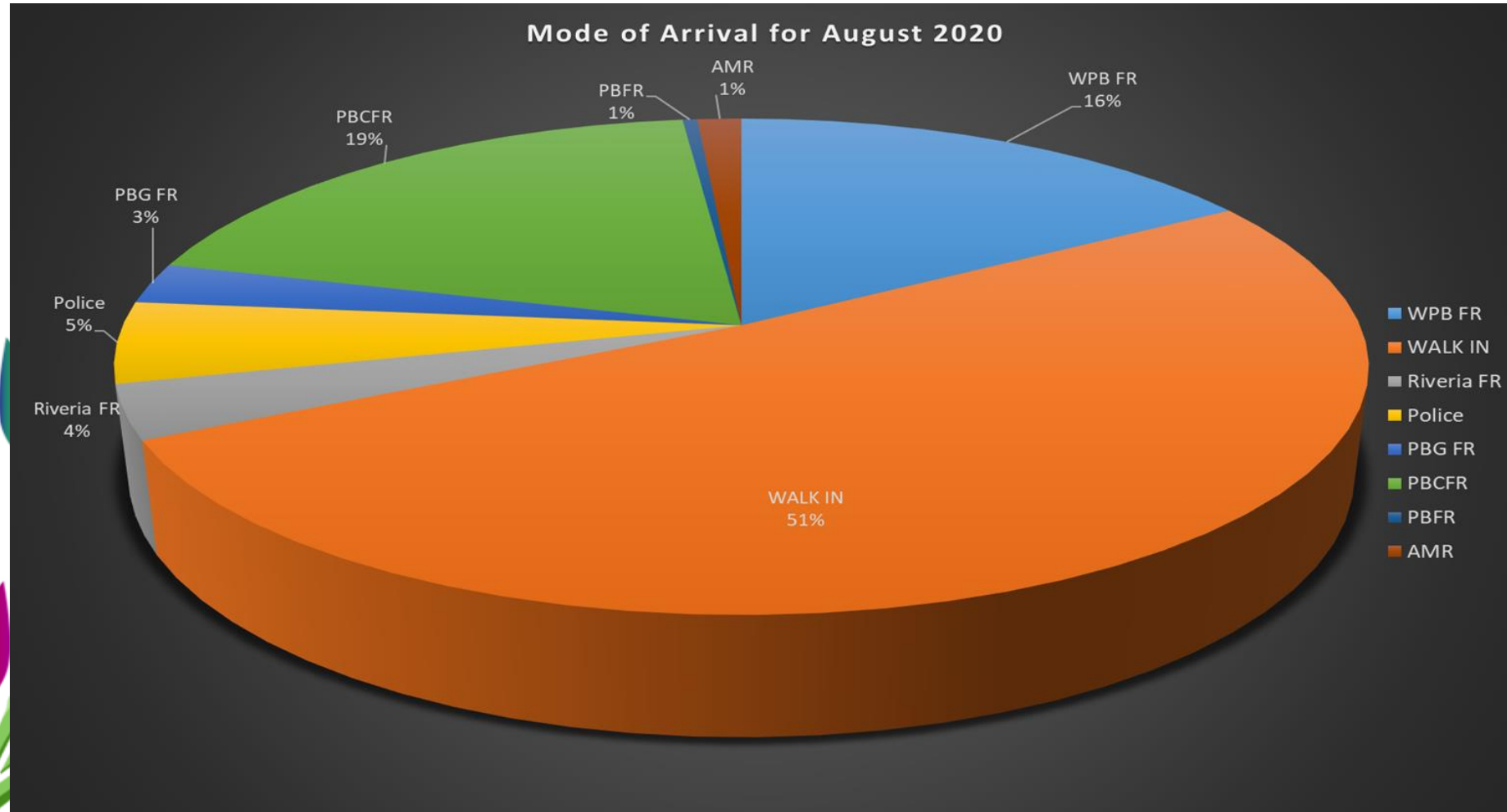
*No resource for patients over 22 weeks pregnant who need MAT induction

www.facingthecrisis.org

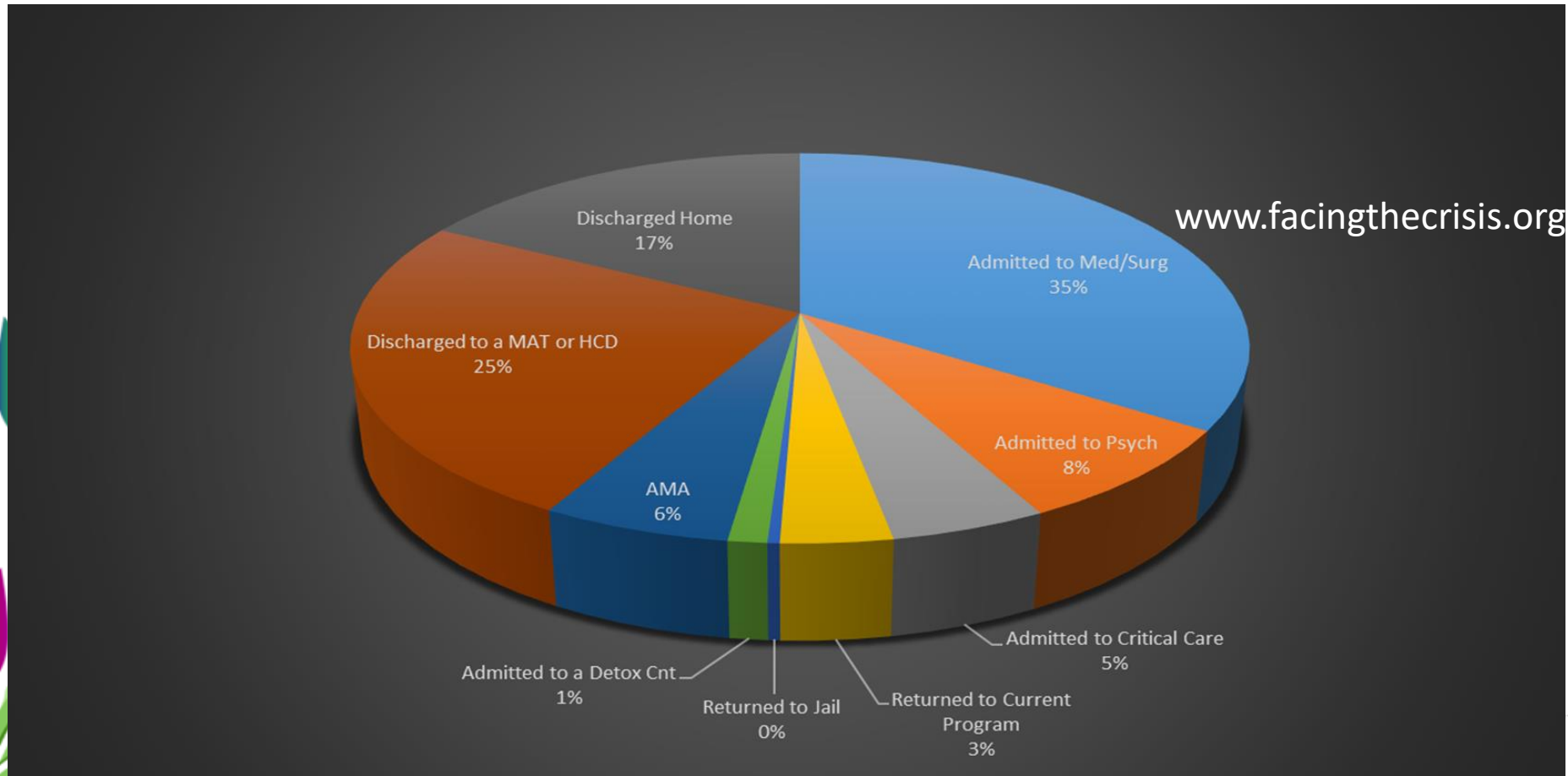
Health Care District
PALM BEACH COUNTY
Health Care District
Care Coordinators



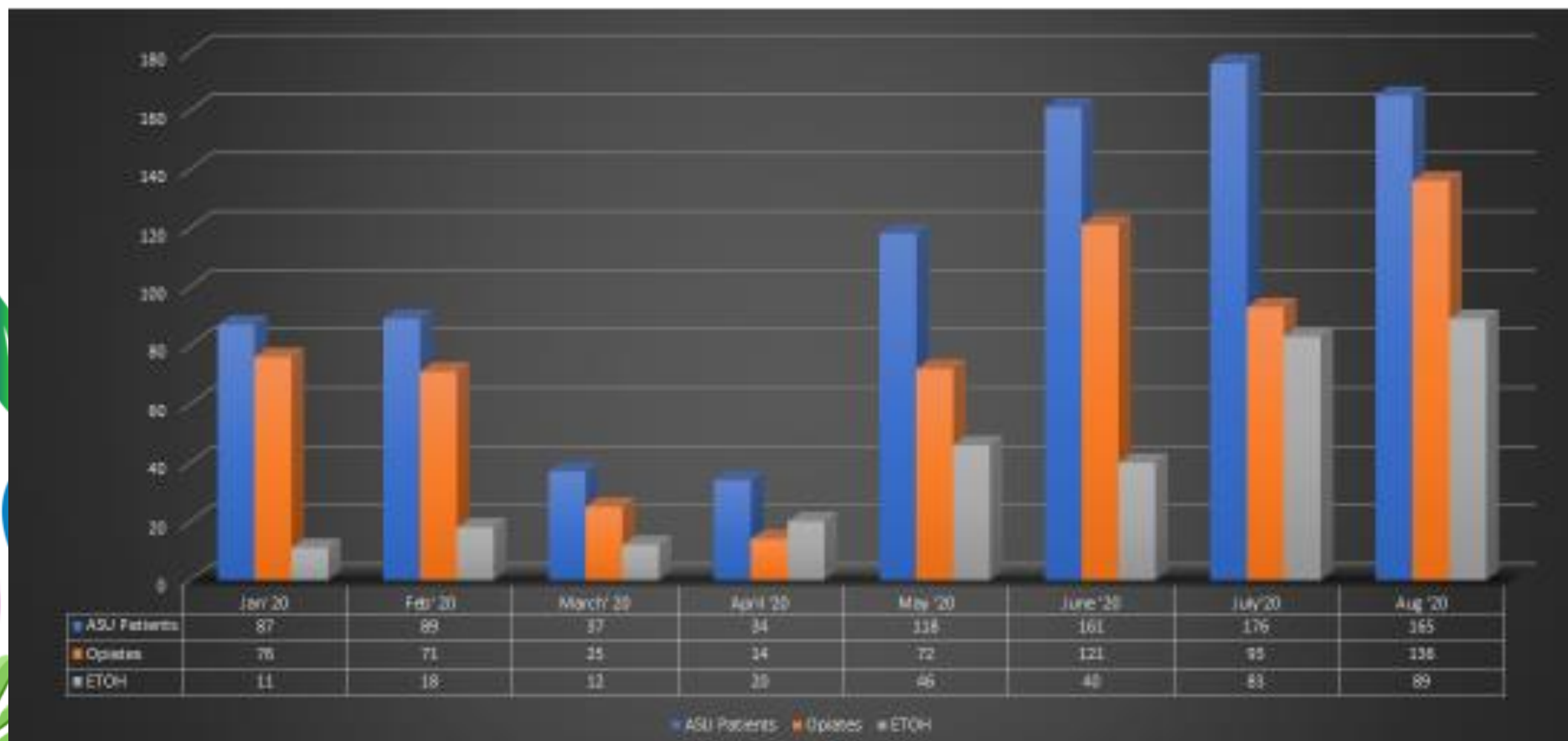
HCD – MODE OF ARRIVAL – AUG 2020



HCD – DISPOSITIONS – NOV 2019 - AUG 2020



HCD - VOLUME BREAKDOWN - OPIATES vs. etoh



HCD - BRIEF ADDICTION MONITOR SURVEYS



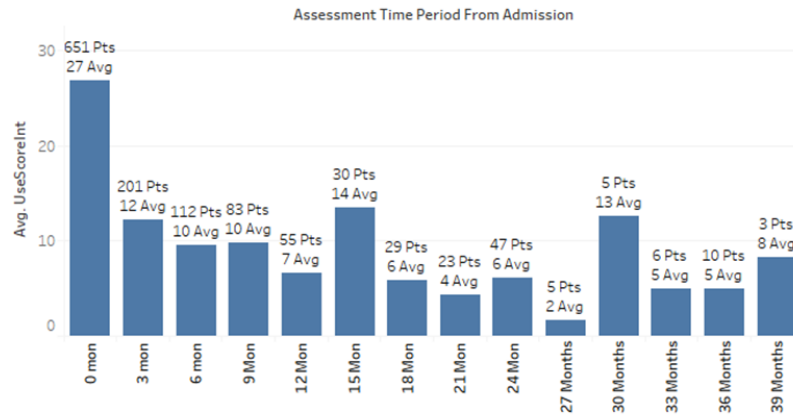
SURVEYS

Brief Addiction Monitor (BAM)

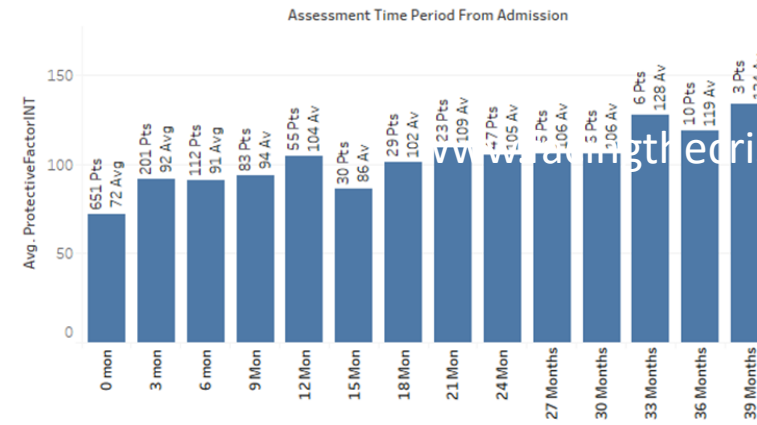
Survey Date
1/1/2019 to 9/15/2020

1,260

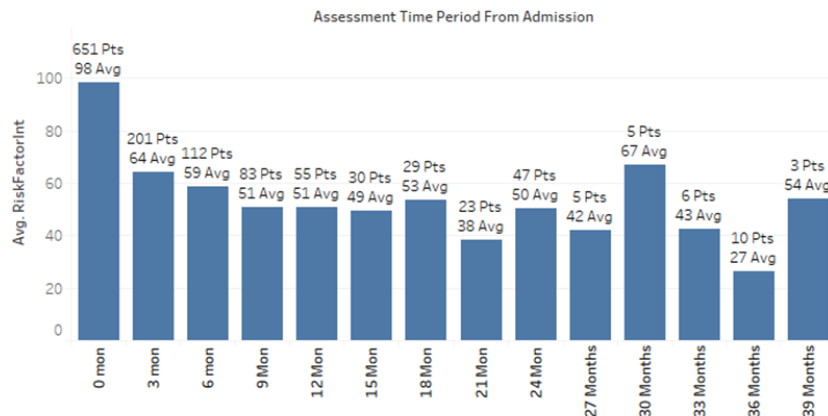
Use Score



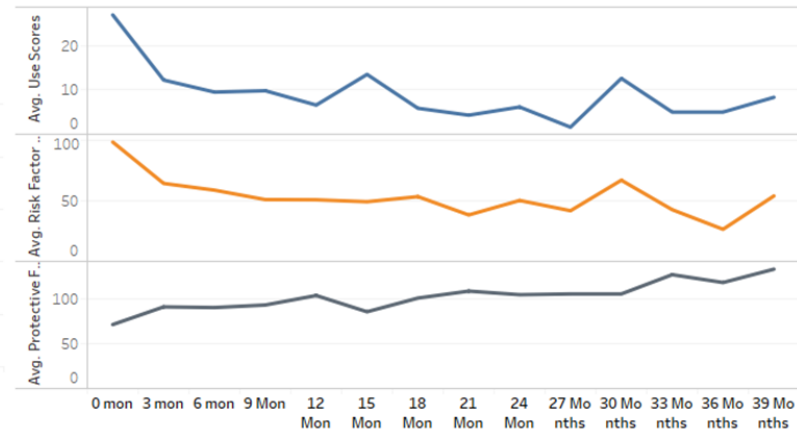
Protective Factors



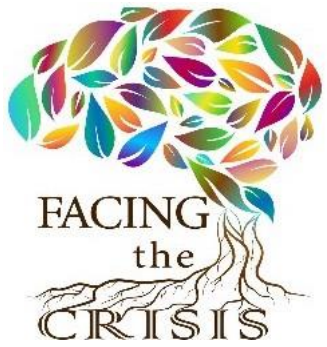
Risk Factors



Average Scores trend



ORP FUNDING INITIATIVES



Leadership	Appoint a Professional County Staffer to coordinate efforts and Establish steering committee; Increase in federal RCSP funding; USDOJ COSSAP grant
Prevention and Education	Facing the Crisis, Recovery Is Now; Recovery Leadership Institute; LifeSkills; Family member/ children at risk outreach
Treatment (and Recovery)	Two RCO / RCCs; Expanded detox/residential services; Women, women with children; Syringe Access Program; Project COPE
Ancillary (Essential) Services	Ted's Place (respite)
Evaluation and Monitoring	Recovery Capital Indexing



SEFBHN PBC INITIATIVES, PROGRAMS & SERVICES

PPE Distributed, March – September 2020

PPE	Dispersed
Gloves	15,650
Hand Sanitizer	1,188
KN95 Masks	6,000
Masks	10,000
Gowns	1,200
Goggles	110
Face Shields	1,500
Thermometers	75
Total	35,723



SEFBHN PBC INITIATIVES, PROGRAMS & SERVICES

Summary of Services and Funding for Fiscal Year 19-20

Program	State Opioid Response	Palm Beach County	Number Served
Prevention	\$122,791	\$125,000	1,962
Ted's Place – Respite & Care Coordination	\$33,296	\$564,375	138
Rebel Recovery's Community Organization	\$100,000	\$37,500	1,430

FY 19-20 Transitional Vouchers			
Number Served	State Opioid Response	State Funds	Total
172	\$84,445	\$135,960	\$220,405



SEFBHN PBC INITIATIVES, PROGRAMS & SERVICES

RCO / RCC – Rebel Recovery (West Palm Beach)

- 1,430 participants to date
- Average weekly Classes – 15
 - Includes meetings, groups, trainings, and recreation
- Evidence Based Program Trainings:
 - Helping Others Heal for Peer Certification
 - WRAP (Wellness Recovery Action Plan)
 - Overdose Prevention
- Naloxone Kits Distributed: 7,294 doses
 - 155 Community Reversals Reported

RCO / RCC The HUB of Palm Beach County (Delray Beach)

- Organizational development completed / Staffing and virtual services implemented
- Center scheduled to open Nov 2020

SEFBHN PBC INITIATIVES, PROGRAMS & SERVICES

Reasons for Discharge of Palm Beach County SUD Persons FY 18-19 and FY 19-20

SUCCESSFUL

1 - Successfully completed Treatment	6288
4 - Successfully completed Transfer to another treatment program or facility	193
24 - Successfully completed Transfer to another treatment program or facility that is not in the SSA or SMHA reporting system	125

Subtotal 6606 65%

UNSUCCESSFUL

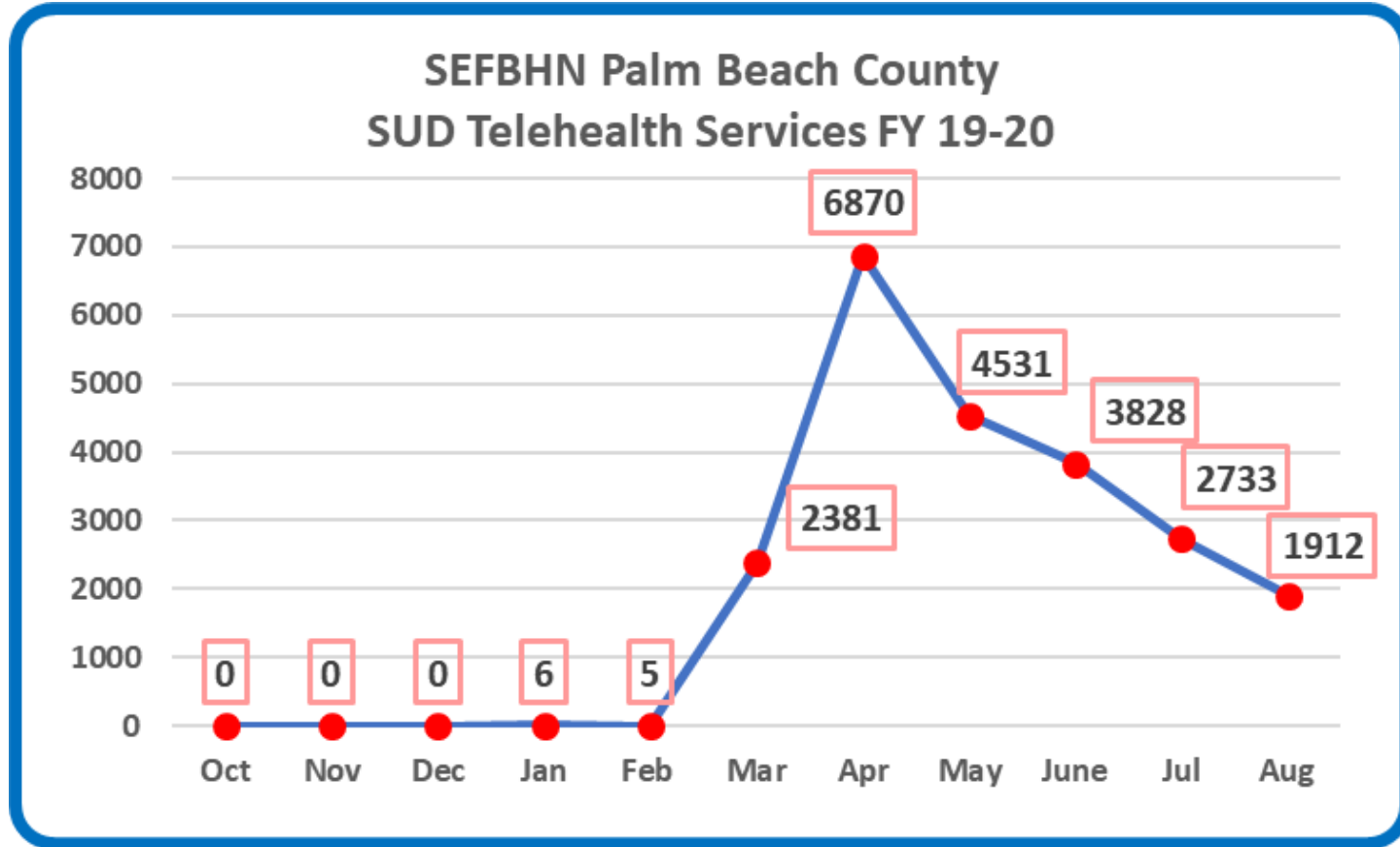
14 - Transferred to another treatment program or facility but individual is no show or transfer not successfully completed	4
2 - Dropped out of treatment lost contact administrative discharge left against medical advice eloped failed to return from leave and individual choice	1945
3 - Terminated by facility	181
5 - Incarcerated or released by or to courts	44
6 - Death	13
7 - Other includes aging out of the children s MH system extended placement conditional release and all other reasons	1321

Subtotal 3508 35%

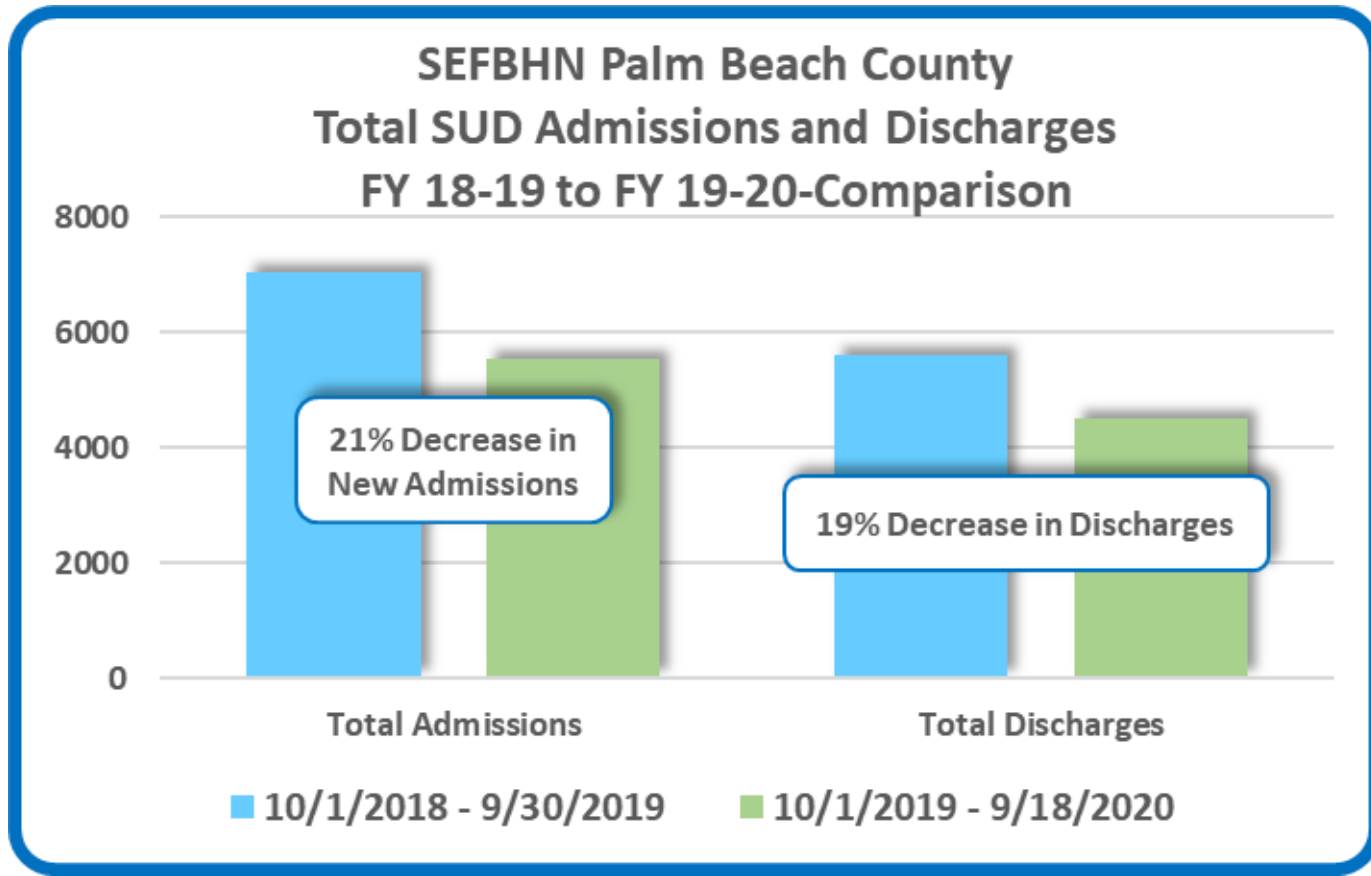
Grand Total 10114 100%



SEFBHN PBC INITIATIVES, PROGRAMS & SERVICES

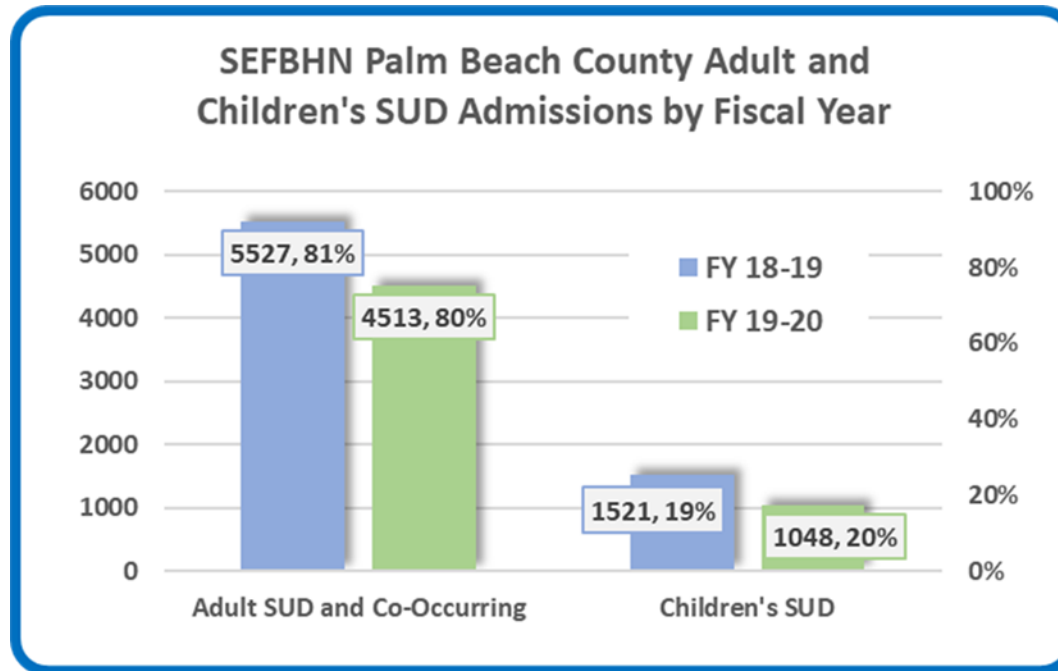


SEFBHN PBC INITIATIVES, PROGRAMS & SERVICES



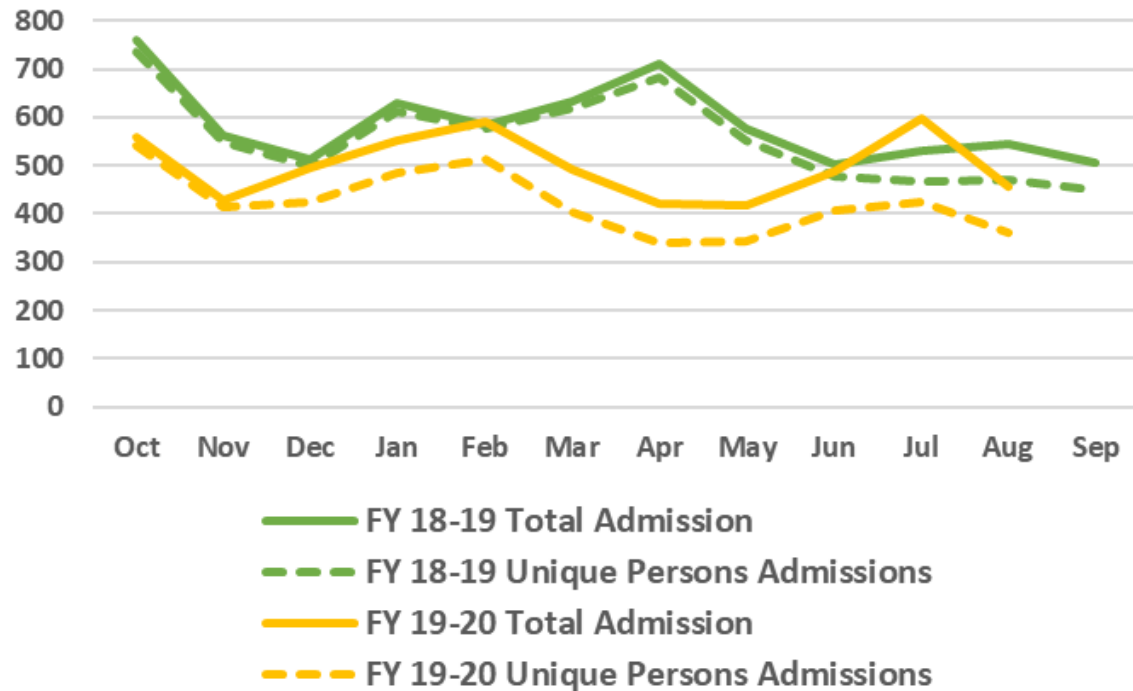
SEFBHN PBC INITIATIVES, PROGRAMS & SERVICES

Admissions	FY 18-19		FY 19-20		Grand Total	
	Total	PBC	Total	PBC	Total	PBC
SUD and Co-Occuring Admissions	10,521	7,048	8,611	5,561	19,132	12,602
SUD/CO Unique Persons Admitted	9,192	6,368	6,754	4,298	15,083	10,057



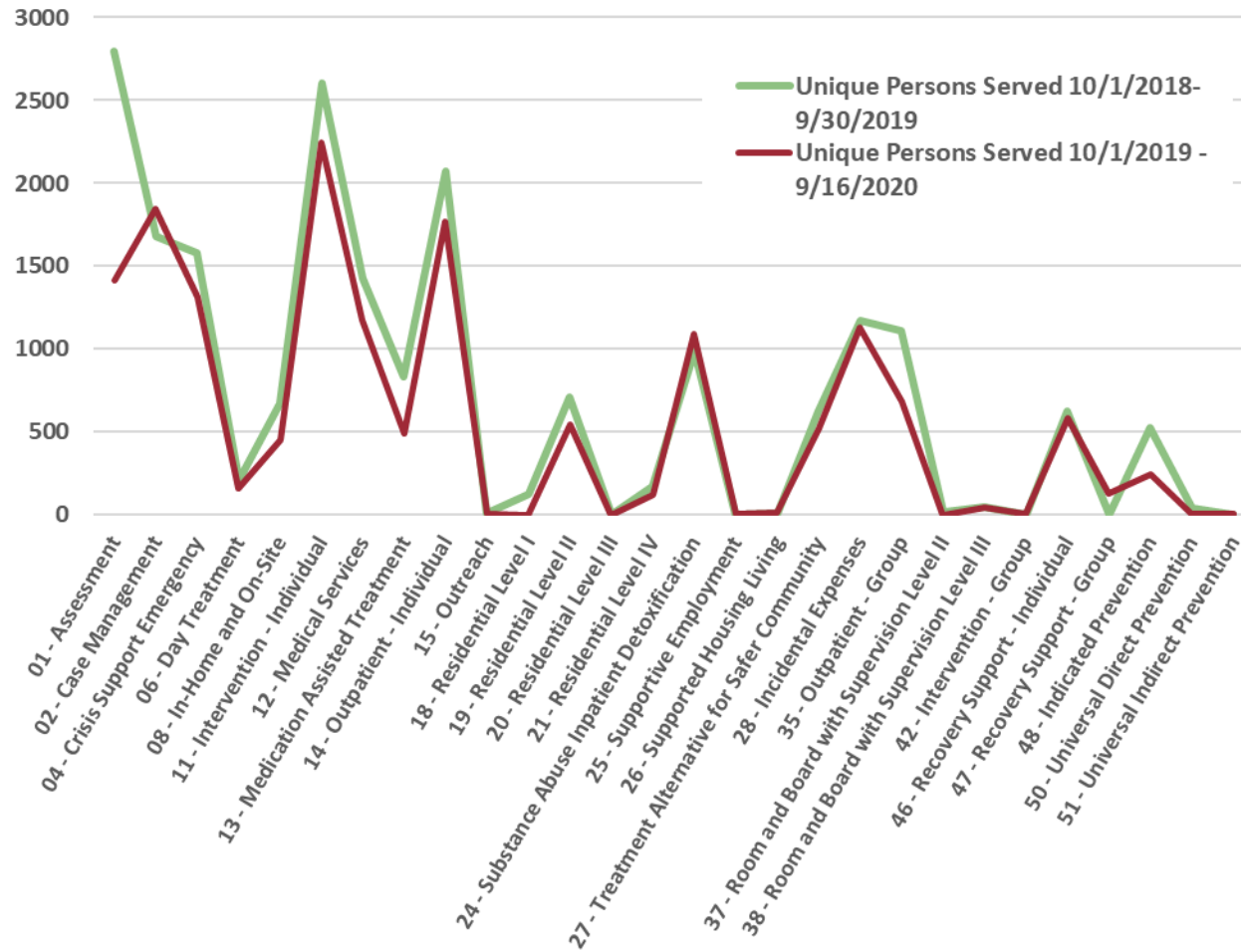
SEFBHN PBC INITIATIVES, PROGRAMS & SERVICES

SEFBHN PBC Substance Use Disorder Admissions -
Total and Unique Person Admissions
FY 18-19* to FY 19-20** Comparison



SEFBHN PBC INITIATIVES, PROGRAMS & SERVICES

Unique Palm Beach County Individuals Served by SEFBHN SUD Provider Network - FY 18-19 to FY 19-20 Comparison



OPIOID EPIDEMIC RESPONSE INITIATIVES - FEDERAL

USDOJ Comprehensive Opioid, Stimulant & Substance Abuse Program

- Focused on achieving housing stability given its key predictive value in achieving long-term recovery outcomes.
- Define and measure housing stability standards.
- Assist clients in finding recovery housing placement using the Recovery Housing Voucher.
- Recovery support services and services fund tied to individualized recovery plans.

Cares Act II, Emergency Solutions Grant

- Housing, treatment, support services and Housing First program for homeless individuals with substance use disorder, mental illness or co-occurrence.



DOH – OVERDOSE TO ACTION PROJECT

Strategies

- Collect and disseminate emergency department (ED) data on overdoses.
- Collect and disseminate descriptions of drug overdose death circumstances.
- Implement surveillance to support NOFO interventions.
- ID high prescribing behaviors re: Prescription Drug Monitoring Programs.
- Integration of state and local preventions and response efforts.
- Establishing linkages to care.
- Providers and health systems support.
- Public safety partnerships.
- Empowering individuals to make safer choices.
- Prevention innovation project.



SOBER HOMES TASK FORCE

More arrests to come in crackdown on drug-recovery industry, prosecutor vows

By Marc Freeman, South Florida Sun Sentinel - 1/13/2020



Battling the opioid epidemic, they've pursued 100 criminal cases against fraudsters in the area's drug-recovery industry. And they've seen a big drop in overdose deaths among mistreated addicts.

OPIOID-CRISIS

Delray Beach addiction treatment doctor arrested in \$681M fraud case

Sonja Isger sisger@pbpost.com

Published 7:33 p.m. ET Jul. 31, 2020

- Achieved 100th arrest
- Legislative and National leadership

“We have made substantial progress in the ongoing effort to save lives from this unprecedented epidemic, and we realize that there is more work to do.”

State Attorney
David Aronberg



OPIOID EPIDEMIC RESPONSE INITIATIVES

Question and Answers

