

Department of Health

COVID-19 UPDATE

BCC

PALM BEACH COUNTY



ALINA M. ALONSO, M.D.

DIRECTOR

DOH-PALM BEACH

JANUARY 26, 2021

COVID-19 Cases US vs Global

Data as of 1/26/21

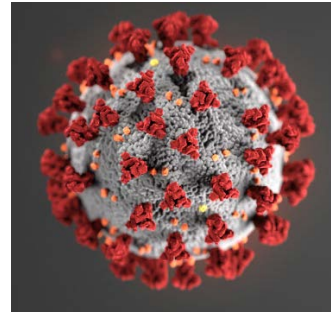
Data as of 1/11/21

USA Cases
25,246,713
+2,657,289

Global Cases
99,587,084

USA Deaths
420,723
+384,831

Global Deaths
2,136,559



USA Cases
22,589,424

Global Cases
90,833,894

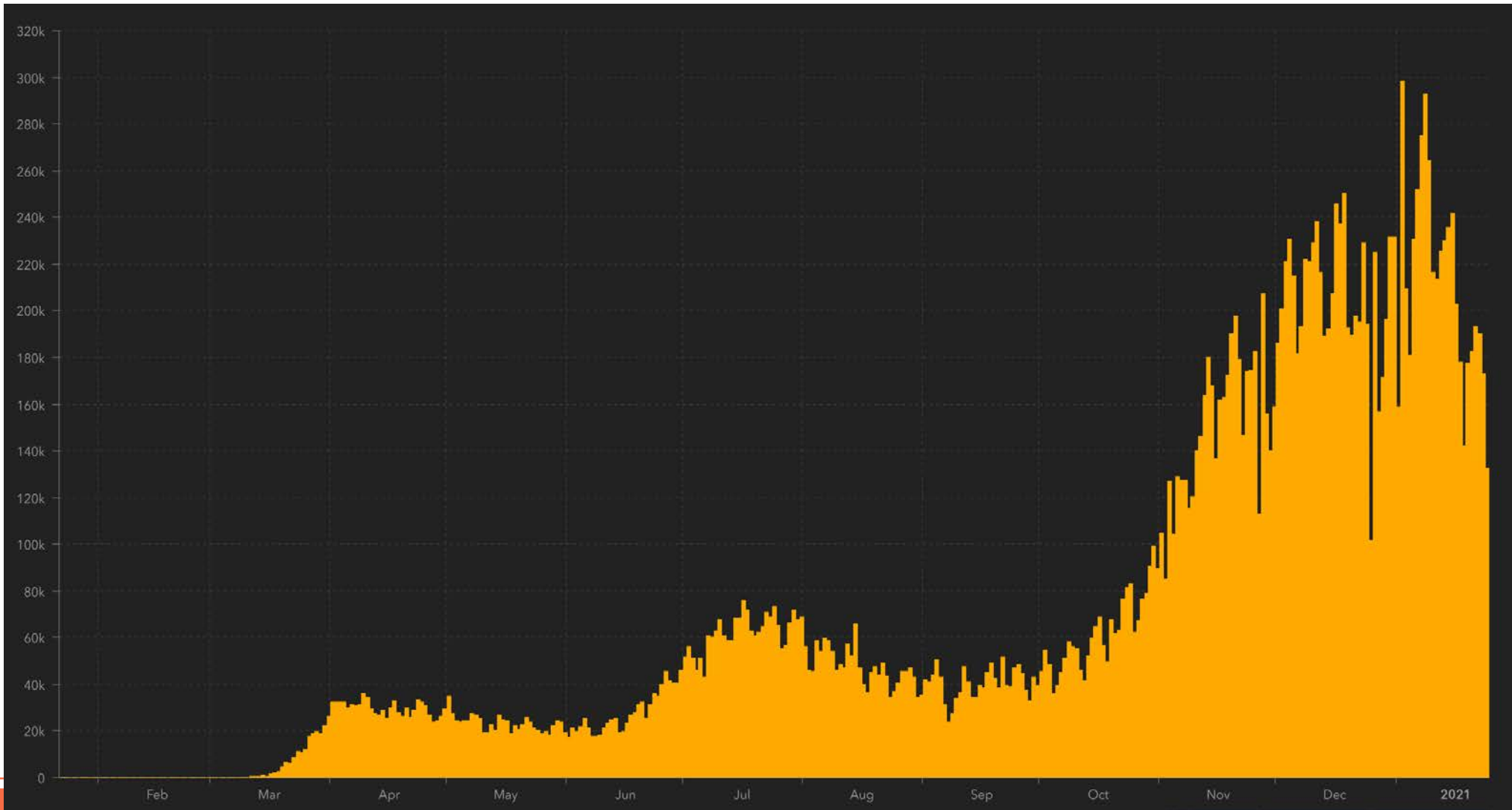
USA Deaths
375,892

Global Deaths
1,944



US New COVID Cases by Day

Data as of 1/26/21



Spike on
1/2/21 of
298,031
new cases
in one day.



Florida & Palm Beach COVID Numbers

As of 3pm Monday, Florida Dept. of Health preliminary numbers showed:

Palm Beach County

Florida

102,968 (+601)

1,658,169 (+8,720)

Total positive cases

5,501 (+12)

70,346 (+165)

Total patients hospitalized

2,123 (+25)

25,446 (+153)

Total deaths reported



PBC COVID Numbers

Palm Beach County	Total Hospital Bed Utilization	COVID Hospital Bed Utilization	Total ICU Bed Utilization	COVID ICU Bed Utilization	Total Ventilator Utilization	PBC New cases per day*	Number of Test Results per day	% Daily Lab Positivity*	% Positive of Total People Tested
Mon 1/24	76.5 %	8.7 %	73.4 %	24.8 %	47.39 %	avg 733		avg 8.77%	avg 15.03%
Sun 1/24	n/a	8.4 %	n/a	25.7 %	n/a	592	5501	9.05 %	15.29 %
Sat 1/23	n/a	8.2 %	n/a	25.5 %	n/a	591	7097	8.33 %	15.26 %
Fri 1/22	76.5 %	8.5 %	73.4 %	25.7 %	47.4 %	794	13,438	5.91 %	15.22 %
Thu 1/21	78.3%	8.6 %	72.6 %	25.0 %	45.2 %	786	7189	10.96 %	15.20 %
Wed 1/20	77.3 %	8.6 %	73.9 %	26.7 %	47.5 %	828	11,285	7.37 %	15.13 %
Tues 1/19	76.9 %	8.2 %	73.1 %	25.7 %	46.7 %	666	6410	10.48 %	15.08 %
Mon 1/18	n/a	7.8 %	n/a	27.1 %	n/a	609	6358	9.68 %	15.02 %
Sun 1/17	n/a	8.0 %	n/a	27.1 %	n/a	506	5812	8.79 %	15.00 %
Sat 1/16	n/a	7.8 %	n/a	26.9 %	n/a	777	9675	8.15 %	n/a
Fri 1/15	77.9 %	7.7 %	75.7 %	25.5 %	45.0 %	647	8850	7.36 %	n/a
Thu 1/14	77.6 %	8.0 %	75.4 %	26.2 %	43.5 %	1,187	12,049	9.95 %	14.91 %
Wed 1/13	78.0 %	8.4 %	75.2 %	25.0 %	44.2 %	856	13,554	6.43 %	14.81 %
Tues 1/12	77.6 %	8.4 %	73.8 %	24.5 %	44.6 %	700	7177	9.92 %	14.76 %
Mon 1/11	76.6 %	8.3 %	69.5 %	26.2 %	39.0 %	727	7103	10.44 %	14.71 %

Florida's Positivity:
9.56 % / 16.43 %

Dade's Positivity:
8.18%/19.68%

Broward's Positivity:
8.95%/15.39%



Governor's Executive Order

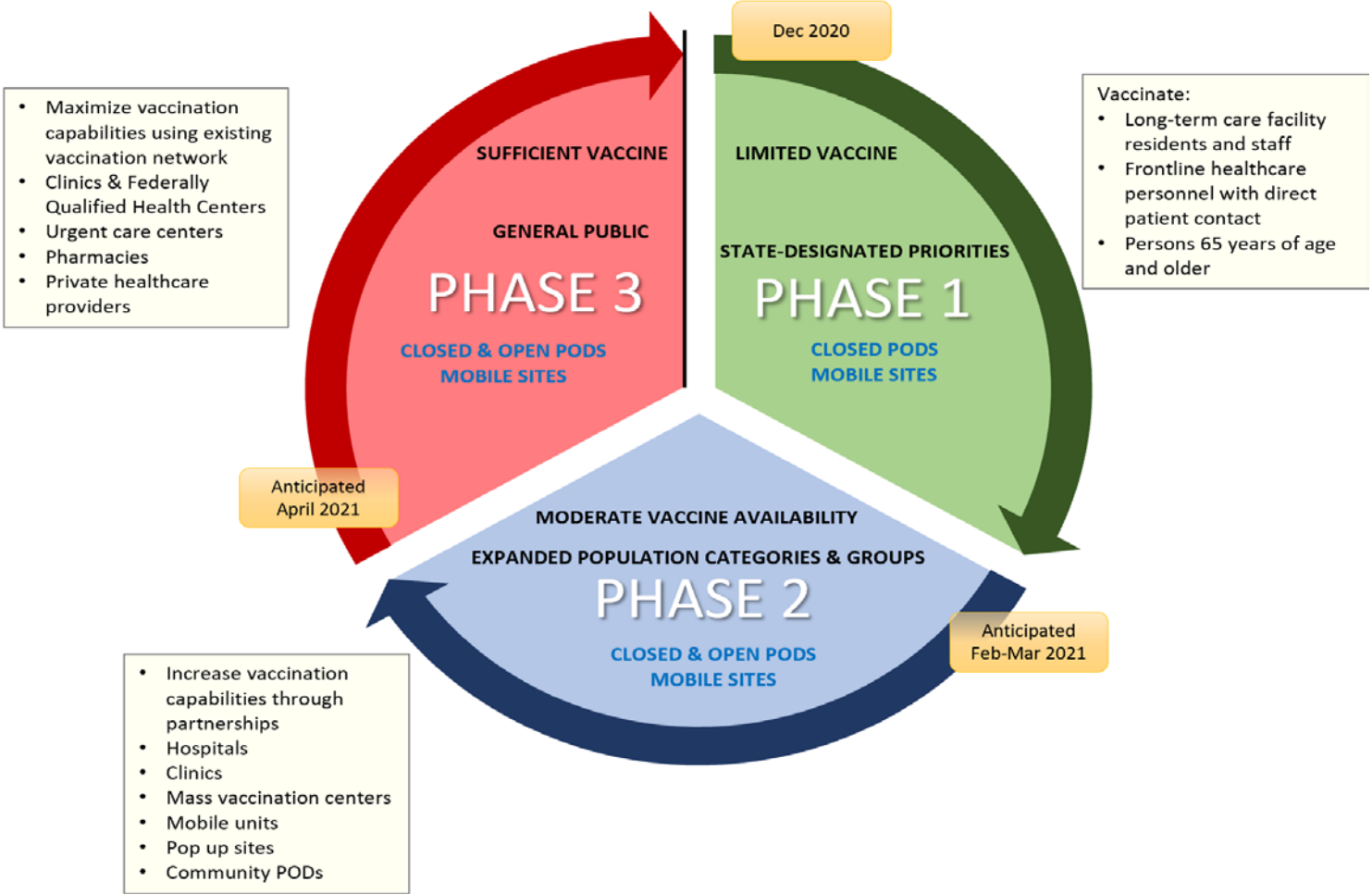
During the first phase of the vaccine administration, all providers administering any COVID-19 vaccine shall only vaccinate the following populations:

- Long-term care facility residents and staff
- Persons 65 years of age and older
- Health care personnel with direct patient contact



COVID-19 VACCINATION PHASES

PALM BEACH COUNTY



Phase 1-3 Action Steps in Palm Beach County

Objective of the CHD is to equitably distribute vaccine to all residents and visitors who want to be vaccinated in Palm Beach County.

- **Phase 1**- Vaccinate Fire Rescue, CHD&HCD health staff, Health Care Workers and Seniors 65+ based on **allocated vaccine**
- Messaging to get **appointments** set up based on vaccine allocations
- Messaging to **eliminate unrealistic expectations due to limited vaccine**
- **Messaging to encourage vaccine uptake in minority communities most affected**
- **Ready with mass vaccination centers, PODs, mobile units and strike teams - but need the vaccine**
- **Phase 2** - Collaborate with partners to increase vaccination augmentation as more vaccine becomes available , including preparation for large-scale community PODS and vaccinate any other priority group
- **Phase 3** – same as phase 2 but able to vaccinate general population



PBC COVID Vaccination Summary

COVID-19 doses administered in Florida

Doses administered 137,504

Total number of doses of the COVID-19 vaccine that have been administered in Florida.

Persons vaccinated for COVID-19 in Florida

Total people vaccinated 130,027

First dose 122,550

Series completed 7,477

First dose: received their first dose of the COVID-19 vaccine.

Series complete: received all recommended doses of the COVID-19 vaccine to be considered fully immunized.

Total people vaccinated

Florida - 1,407,411 6.5%

Dade - 156,094 5.7%

Palm Beach - 130,027 8.7%

Broward - 126,337 6.4%

Census PBC 7/1/19 Pop- 1,496,770

Demographic summary	First dose	Series complete	Total people vaccinated
Age group	122,550	7,477	130,027
16-24 years	1,051	96	1,147
25-34 years	3,309	667	3,976
35-44 years	4,517	1,065	5,582
45-54 years	6,073	1,381	7,454
55-64 years	8,931	1,575	10,506
65-74 years	47,903	1,139	49,042
75-84 years	36,405	809	37,214
85+ years	14,361	745	15,106
Race	122,550	7,477	130,027
White	87,165	3,889	91,054
Black	3,578	355	3,933
American Indian/Alaskan	502	9	511
Other	12,241	1,923	14,164
Unknown	19,064	1,301	20,365
Other race includes Asian, native Hawaiian/Pacific Islander, or other.			
Ethnicity	122,550	7,477	130,027
Hispanic	4,378	532	4,910
Non-Hispanic	71,689	4,076	75,765
Unknown	46,483	2,869	49,352
Gender	122,550	7,477	130,027
Female	70,872	4,315	75,187
Male	51,536	3,162	54,698
Unknown	142	0	142

White – 70%
 Black – 3%
 Hispanic – 4%
 Female – 58%
 Male – 42%



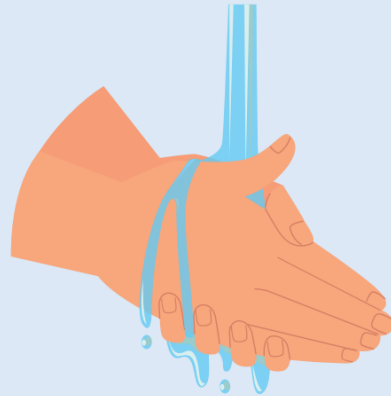
3 W's

3 W's to reduce risk of COVID-19

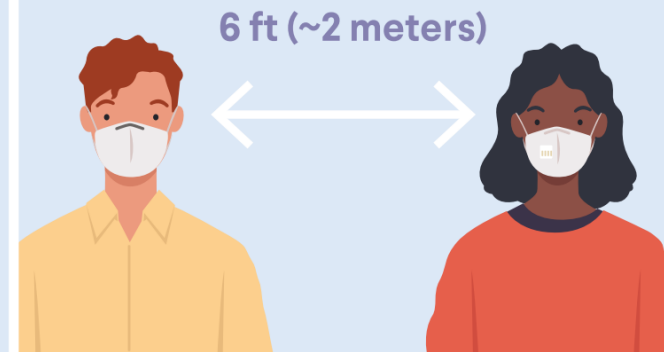
Wear a mask



Wash your hands



Watch your distance



COVID-19

RESOLVE
TO SAVE LIVES

 Vital
Strategies

More info at
[PreventEpidemics.org](https://www.PreventEpidemics.org)

#KnowCOVID
#PreventEpidemics



3 C's

Avoid the Three Cs

Be aware of different levels of risk in different settings.



There are certain places where COVID-19 spreads more easily:



Crowded places

with many people nearby



Close-contact settings

Especially where people have close-range conversations



Confined and enclosed spaces

with poor ventilation



Questions?

Thank You





Covid-19 Phased Restart (CPR) Program

Resurgence indicators

Palm Beach County should consider institution of measures that are more restrictive when analysis of the following triggers/indicators collectively indicates the presence of resurgence:

#	Benchmark or indicator	Desired outcome or trend	Trigger/indicator of resurgence	Dec. 21, 2020	Dec. 28, 2020	Jan. 4, 2021	Jan. 11, 2021	Jan. 18, 2021	Jan. 25, 2021
1	Overall percentage of tests with positive COVID-19 results (overall positivity rate)	Sustained reduction trend in the overall COVID-19 positivity rate	Positive (increase) trend in COVID-19 positivity rate	13.54% positivity rate	13.75% positivity rate	14.14% positivity rate	14.60% positivity rate	14.95% positivity rate	15.25% positivity rate
	Percentage of tests with positive COVID-19 results <u>each</u> day (daily lab positivity rate)	Sustained reduction trend in the daily lab COVID-19 positivity rate	Positive (increase) trend in COVID-19 positivity rate over a 7-day period	7.33% (avg.‡) daily lab COVID-19 positivity rate	7.50% (avg.‡) daily lab COVID-19 positivity rate	10.65% (avg.‡) daily lab COVID-19 positivity rate	9.90% (avg.‡) daily lab COVID-19 positivity rate	8.53% (avg.‡) daily lab COVID-19 positivity rate	8.76% (avg.‡) daily lab COVID-19 positivity rate
	Percentage of tests with positive COVID-19 results <u>each</u> day (daily lab positivity rate)	Sustained reduction trend in the daily lab COVID-19 positivity rate (14-day)	Positive (increase) trend in COVID-19 positivity rate above 5% over a 14-day period	7.20% (avg. ³) daily lab COVID-19 positivity rate	7.41% (avg. ³) daily lab COVID-19 positivity rate	9.08% (avg. ³) daily lab COVID-19 positivity rate	10.25% (avg. ³) daily lab COVID-19 positivity rate	9.22% (avg. ³) daily lab COVID-19 positivity rate	8.65% (avg. ³) daily lab COVID-19 positivity rate
2	Daily hospitalizations for COVID-19 in Palm Beach County	Sustained reduction trend in daily hospitalization rate for COVID-19	Positive (increase) trend in the daily hospitalization rate for COVID-19 patients over a five-day period	295 (avg.‡) COVID-19 ⊕ patients hospitalized per day	325 (avg.‡) COVID-19 ⊕ patients hospitalized per day	381 (avg.‡) COVID-19 ⊕ patients hospitalized per day	436 (avg.‡) COVID-19 ⊕ patients hospitalized per day	438 (avg.‡) COVID-19 ⊕ patients hospitalized per day	455 (avg.‡) COVID-19 ⊕ patients hospitalized per day
	COVID-19 death rate	Sustained reduction trend in COVID-19 death rate toward pre-pandemic status	Positive (increase) trend in the COVID-19 death rate over a five-day period	1,835 deaths; 2.37% death rate	1,873 deaths; 2.30% death rate	1,923 deaths; 2.21% death rate	1,972 deaths; 2.13% death rate	2,037 deaths; 2.07% death rate	2,123 deaths; 2.06% death rate
3	COVID-19 daily death rate	Sustained reduction trend in COVID-19 daily death rate (7-day)	Positive (increase) trend in the COVID-19 daily death rate	1.4 (avg.‡) COVID-19-related deaths/day	1.0 (avg.‡) COVID-19-related deaths/day	1.3 (avg.‡) COVID-19-related deaths/day	1.6 (avg.‡) COVID-19-related deaths/day	1.1 (avg.‡) COVID-19-related deaths/day	2.0 (avg.‡) COVID-19-related deaths/day†

Covid-19 Phased Restart (CPR) Program

Resurgence indicators

#	Benchmark or indicator	Desired outcome or trend	Trigger/indicator of resurgence	Dec. 21, 2020	Dec. 28, 2020	Jan. 4, 2021	Jan. 11, 2021	Jan. 18, 2021	Jan. 25, 2021
	COVID-19 daily death rate	Sustained reduction trend in COVID-19 daily death rate (14 day)	Positive (increase) trend in the COVID-19 daily death rate	1.4 (avg. ³) COVID-19-related deaths/day	1.9 (avg. ³) COVID-19-related deaths/day	1.5 (avg. ³) COVID-19-related deaths/day	1.9 (avg. ³) COVID-19-related deaths/day	1.9 (avg. ³) COVID-19-related deaths/day	3.4 (avg. ³) COVID-19-related deaths/day††
4	Ability of hospitals in Palm Beach County to safely treat all patients requiring hospitalization without resorting to crisis standards of care	Sustained reduction in hospital COVID-19 ICU bed utilization	Positive (increase) trend in hospital COVID-19 ICU bed utilization over a seven-day period	79.4 (avg.‡) COVID-19 ICU patients/day	76.0 (avg.‡) COVID-19 ICU patients/day	79.3 (avg.‡) COVID-19 ICU patients/day	90.0 (avg.‡) COVID-19 ICU patients/day	109.0 (avg.‡) COVID-19 ICU patients/day	107.4 (avg.‡) COVID-19 ICU patients/day
	Daily Med Alert patients transported by Palm Beach County Fire-Rescue. Note: While ~50% of all EMS transports, PBCFR transports are likely a representative sampling of county-wide transports.	Sustained reduction in patients transported by Palm Beach County Fire-Rescue as “Med-Alerts”	Positive (increase) trend in daily Med Alert patients transported by Palm Beach County Fire-Rescue	12.86 (avg.‡) Med Alert patients/day	14.71 (avg.‡) Med Alert patients/day	19.57 (avg.‡) Med Alert patients/day	17.86 (avg.‡) Med Alert patients/day	20.86 (avg.‡) Med Alert patients/day	21.43 (avg.‡) Med Alert patients/day
	Weekly counts of Emergency Department visits presenting with COVID-like illnesses (CLI) in Palm Beach County	Sustained reduction in weekly counts of ED visits presenting with CLI in PBC	Positive (increase) trend in weekly counts of ED visits presenting with CLI in PBC	470 ED visits presenting with CLI	472 ED visits presenting with CLI	617 ED visits presenting with CLI	663 ED visits presenting with CLI	643 ED visits presenting with CLI	632 ED visits presenting with CLI
5	Access to COVID-19 testing	Easy access to various types of COVID-19 testing	Marked reported or observed increase in challenges to access to various types of COVID-19 testing	12 public, 4 non-profit, 106 commercial testing sites; 570,442 people tested	12 public, 4 non-profit, 106 commercial testing sites; 588,330 people tested	12 public, 4 non-profit, 106 commercial testing sites; 610,236 people tested	12 public, 4 non-profit, 106 commercial testing sites; 633,676 people tested	9 public, 4 non-profit, 107 commercial testing sites; 656,072 people tested	9 public, 4 non-profit, 107 commercial testing sites; 675,092 people tested



Covid-19 Phased Restart (CPR) Program

Resurgence indicators

#	Benchmark or indicator	Desired outcome or trend	Trigger/indicator of resurgence	Dec. 21, 2020	Dec. 28, 2020	Jan. 4, 2021	Jan. 11, 2021	Jan. 18, 2021	Jan. 25, 2021
6	Ability to monitor confirmed cases and contacts	Capacity to adequately monitor cases and contacts	Marked reported or observed increase in challenges to contact tracing	DoH-PBC Epi staff remained the same at 203; contact tracing up-to-date ⁵	DoH-PBC Epi staff remained the same at 203; contact tracing up-to-date ⁵	DoH-PBC Epi staff remained the same at 217; contact tracing up-to-date ⁵	DoH-PBC Epi staff decreased to 203; contact tracing up-to-date ⁵	DoH-PBC Epi staff decreased to 203; contact tracing up-to-date ⁵	DoH-PBC Epi staff decreased to 203; contact tracing up-to-date ⁵
7	Level of compliance with Phase 1 related executive orders	High level of compliance with Phase 1 related executive orders	Not applicable.	CECT assigned 7,609 cases; conducted over 7,709 site visits; 27 business closures	CECT assigned 7,740 cases; conducted over 7,802 site visits; 27 business closures	CECT assigned 7,980 cases; conducted over 8,030 site visits; 27 business closures	CECT assigned 8,232 cases; conducted over 8,321 site visits; 27 business closures	CECT assigned 8,389 cases; conducted over 8,460 site visits; 27 business closures	CECT assigned 8,497 cases; conducted over 8,582 site visits; 27 business closures

benchmark or indicator as identified in the PBC EOC's COVID-19 Phased Restart (CPR) Program

‡ prior 7-day average

³ prior 14-day average


⁵ defined as ≥90% of positive cases contacted and interviewed within 48 hours of notification of test results


¹⁰contact tracing remains up-to-date, but only 54.6% of positive cases were contacted and interviewed within 48 hours of notification of test results

¹¹as of Monday, December 7, 2020

† data from January 8 - 15, 2021.

†† data from January 1 - 15, 2021.

 = benchmark desired outcome or trend met

 = benchmark desired outcome or trend not met

1/25/2021

previous versions are obsolete



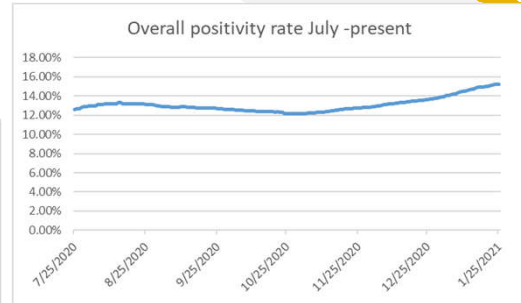
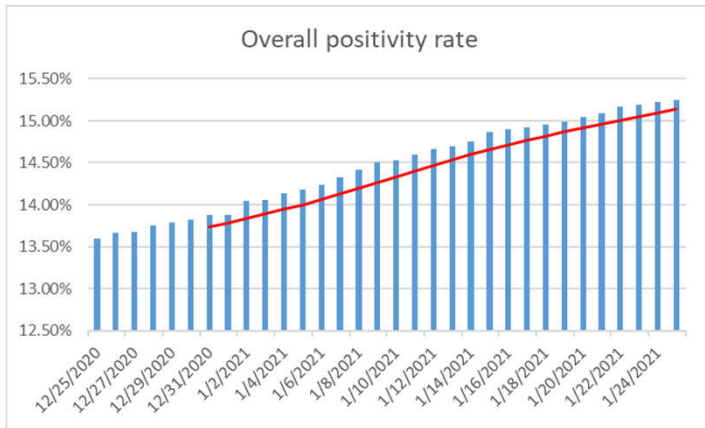
COVID-19 UPDATE

Board of County Commissioners
January 26, 2021

Bill Johnson, RN, Director
Division of Emergency Management
Public Safety Department

COVID-19 total tested positivity

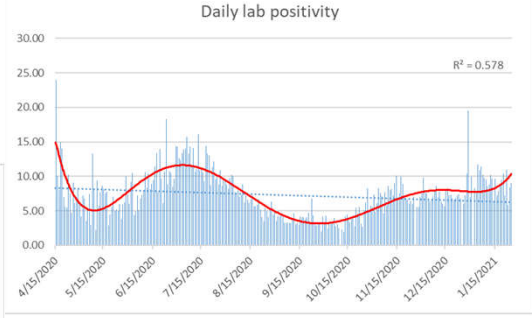
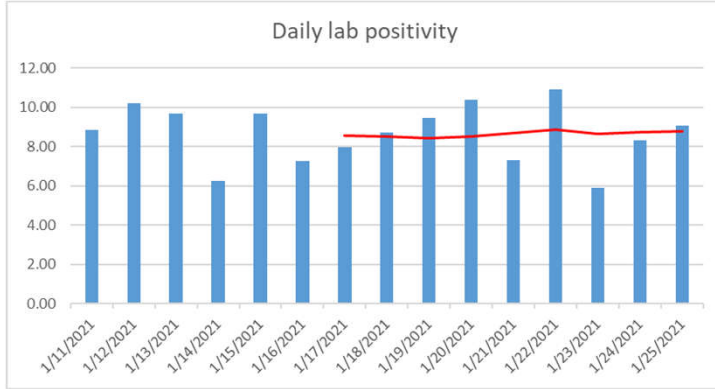
December 25, 2020 –
January 25, 2021





COVID-19 daily lab positivity

January 11 – 25, 2021

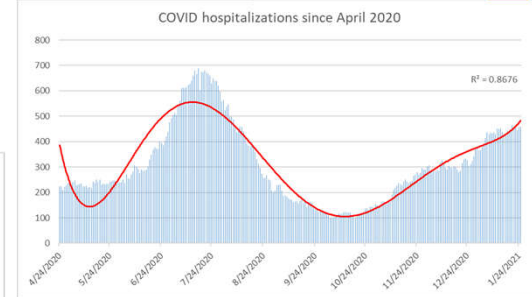
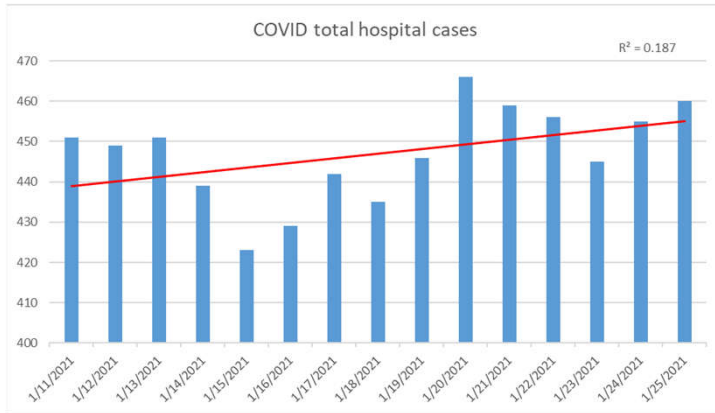


3



COVID-19 positive total hospital census

January 11 – 25, 2021

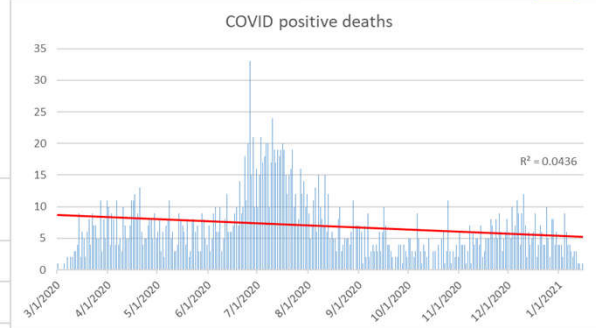
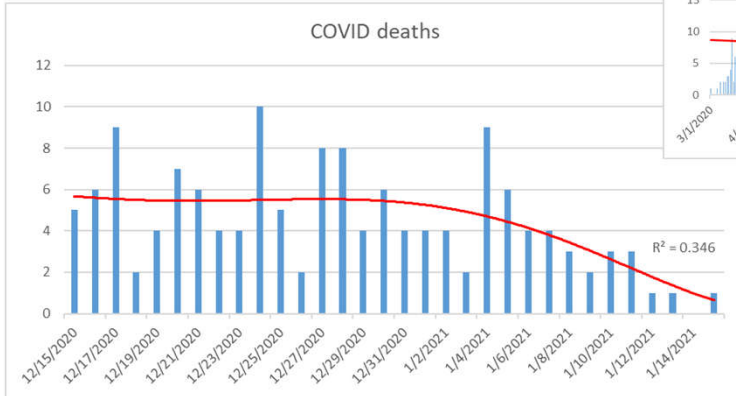


4



COVID-19 deaths

December 15, 2020 – January 15, 2021

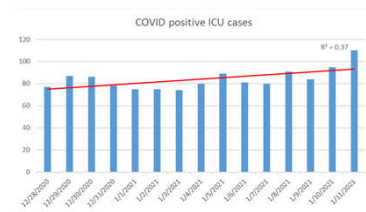
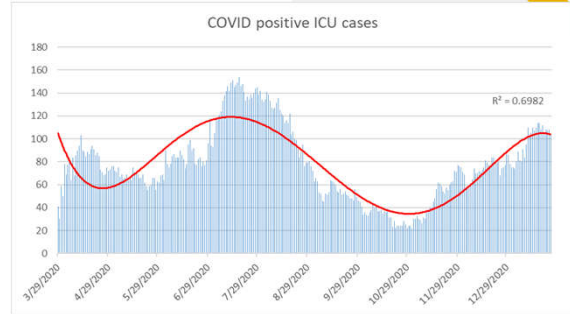
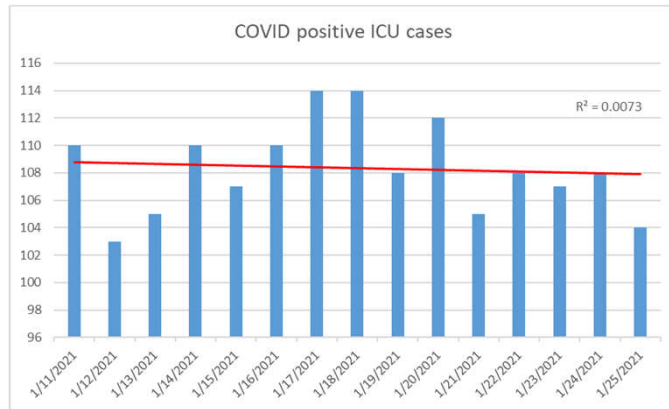


5



COVID-19 positive ICU cases

January 11 - 25, 2021



6

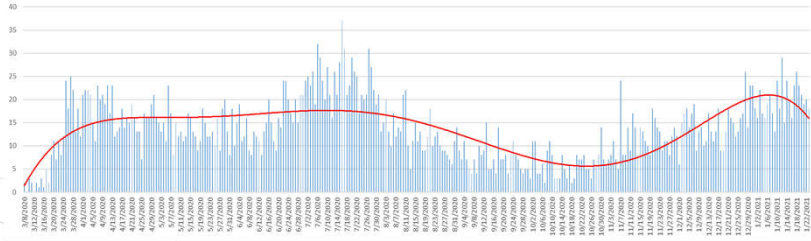


Daily Med Alerts

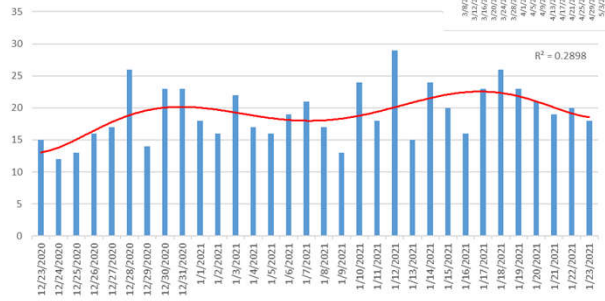
December 23, 2020 – January 23, 2021

Palm Beach County Fire Rescue
Med Alert in Safety Pad
03/08/2020 to Present Number of patients

R² = 0.4578



PBCFR MedAlerts last 30 days

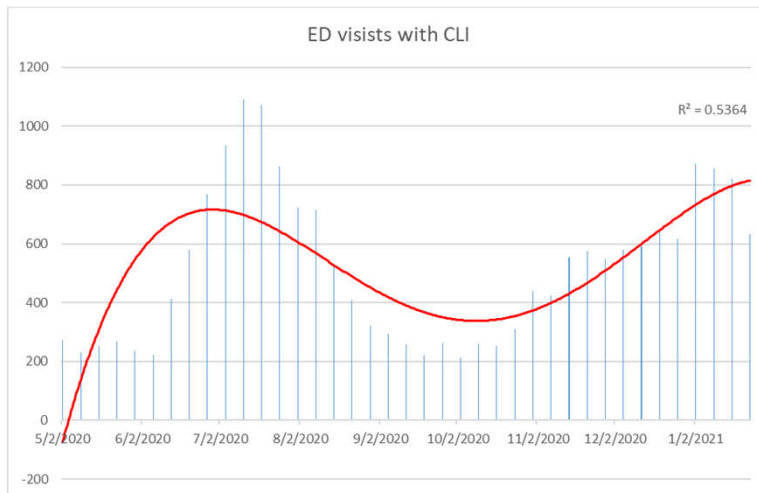


ED visits with CLI

April 26, 2020 – January 23, 2021

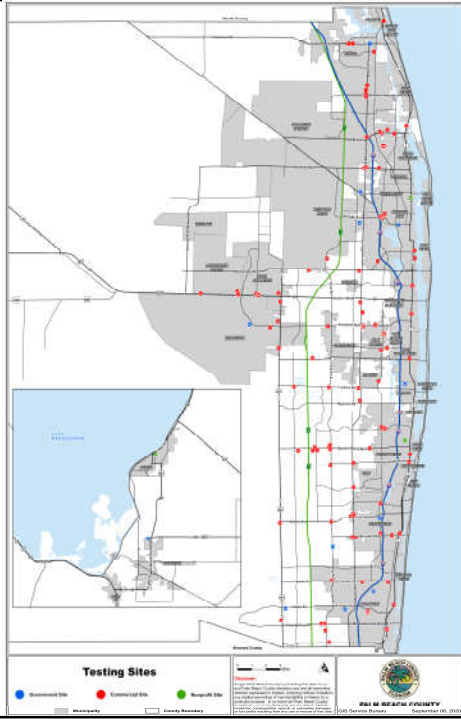
ED visits with CLI

R² = 0.5364



COVID-19 testing sites

- 675,092 people tested (45.1% total PBC pop.)
- 9 government-sponsored sites
- 4 non-profit sites
- 107 commercial sites
- homebound testing (PBCFR)
- www.pbcgov.org

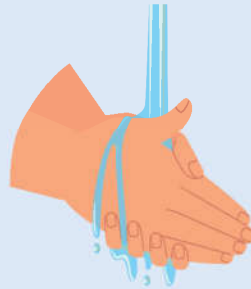


3 W's to reduce risk of COVID-19

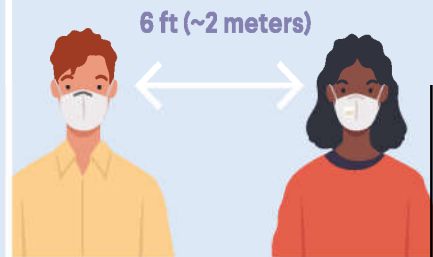
Wear a mask



Wash your hands



Watch your distance



COVID-19 vaccines

- Daily calls with partners.
- Unified in our mission:
 - 'Get shots in arms'
- We have the infrastructure:
 - Effective appointment system
 - Mass vaccination sites
 - Hospitals
 - Municipal fire-rescue departments
 - HOAs, businesses

**We simply
need more
vaccine...**

