

Department of Health

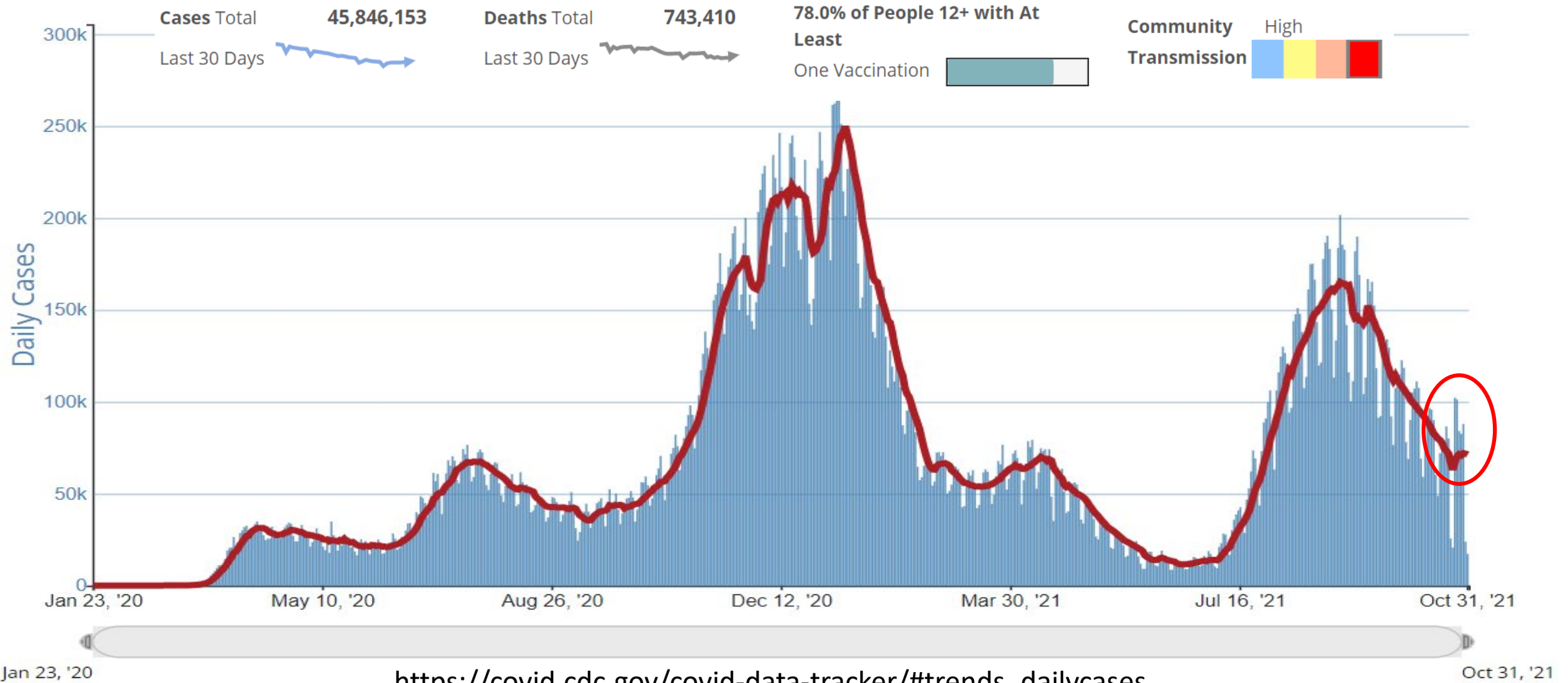
COVID UPDATE PBC BCC

**ALINA M. ALONSO, M.D.
DIRECTOR**

DOH-PALM BEACH
NOVEMBER 2, 2021

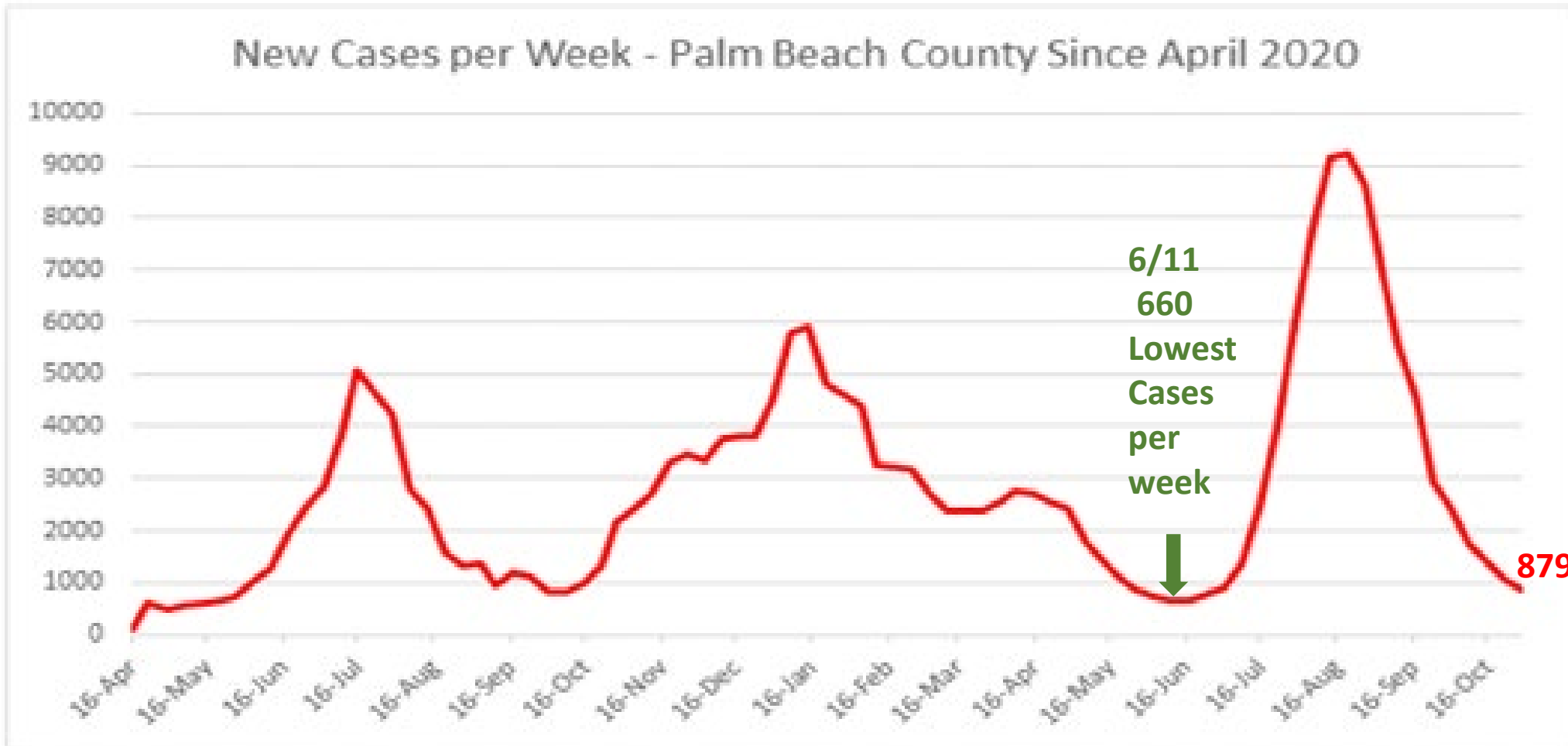


Daily Trends in Number of COVID-19 Cases in The United States

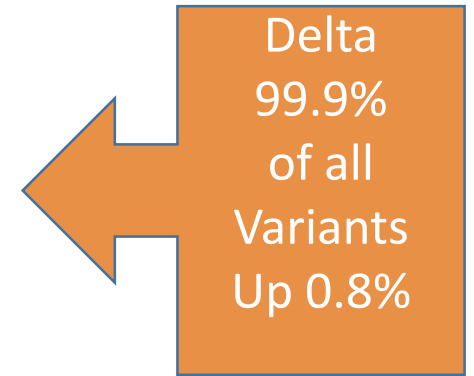


October 22, 2021 - October 28, 2021

Oct. 22 – Oct. 28



Data as of 10/09/21



FL vs PBC Weekly Update

- 2.4

- 66.4

+1

Data from week of : Oct. 22– Oct. 28

	People Vaccinated last week	New Cases last week	New case Positivity last week	Cases per 100,000 population
Palm Beach	3,962	879	3.0 % (-0.4)	59.1
Florida	62,847	12,880	3.0 % (-0.4)	58.6

Last BCC meeting

New case Positivity last week	Cases per 100,000 popl
4.1 %	96.2

Cumulative Data since March 1, 2020:

	Total People Vaccinated	Total Percent 12+ Vaccinated	Total Number of Cases	Case Positivity
Palm Beach:	981,296	75 %	225,002	19.4 % (- .10)
Florida:	13,932,791	73 %	3,647,277	21.0 % (-.10)



Determining Community Transmission Risk

<https://covid.cdc.gov/covid-data-tracker/#county-view>

Determining Transmission Risk

If the two indicators suggest different transmission levels, the higher level is selected

New case Positivity last week	Cases per 100,000 pop
3.0 % (-0.4)	59.1
3.0 % (-0.4)	58.6

	Low	Moderate	Substantial	High
New cases per 100,000 persons in the past 7 days*	<10	10-49.99	50-99.99	≥100
Percentage of positive NAATs tests during the past 7 days**	<5%	5-7.99%	8-9.99%	≥10.0%

**NAAT = Nucleic Acid Amplification Tests or PCR Tests vs Rapid Antigen Tests



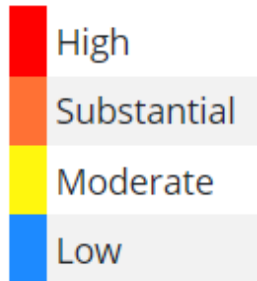
Florida COVID Community Transmission Risk by County

Community Transmission

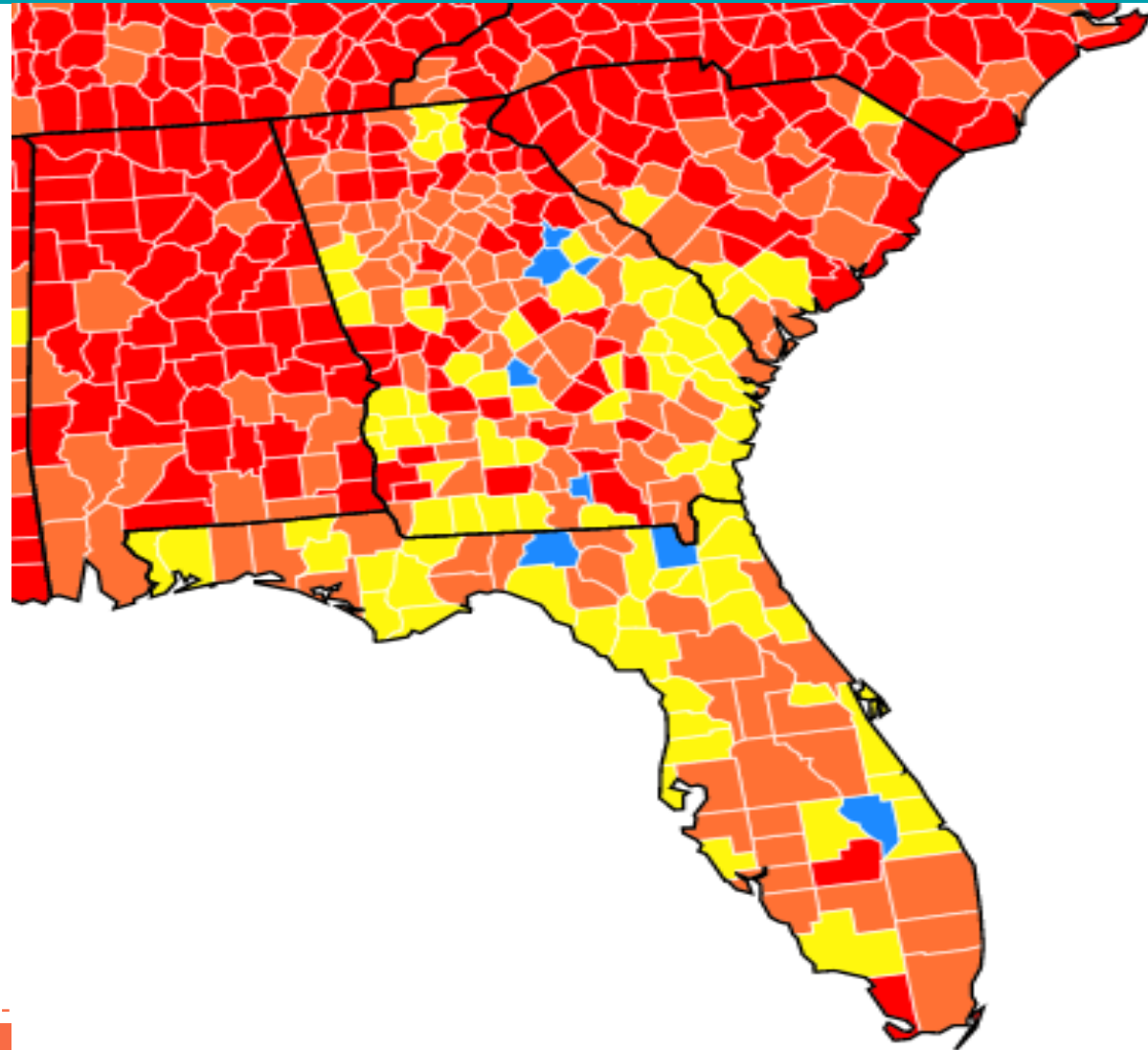
Everyone in **Palm Beach County, Florida** should wear a mask in public, indoor settings. Mask requirements might vary from place to place. Make sure you follow local laws, rules, regulations or guidance.

Substantial

Data for Oct. 22 - 28

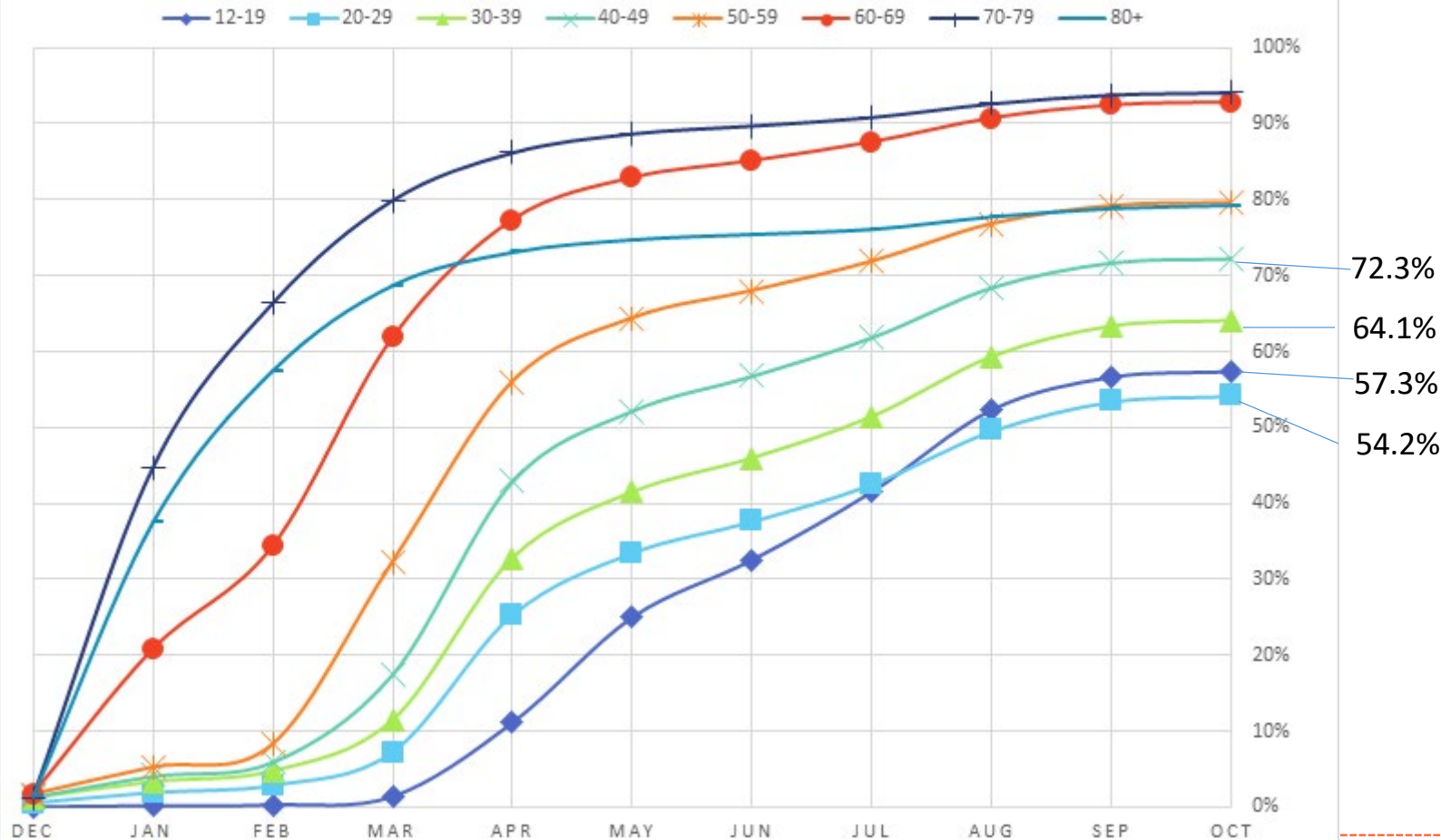


Florida State and
Palm Beach County at
Substantial Transmission Risk



PBC % Population ≥ 12 years of age with Completed Series

% VACCINATED BY AGE GROUP
DEC-2020 TO SEP-2021 PALM BEACH COUNTY



Percent vaccinated for PBC Ages 12+	10/14/21
1st Dose:	9.6%
2 Dose (Series Completed):	65.4%
Total Vaccinated:	75.0%

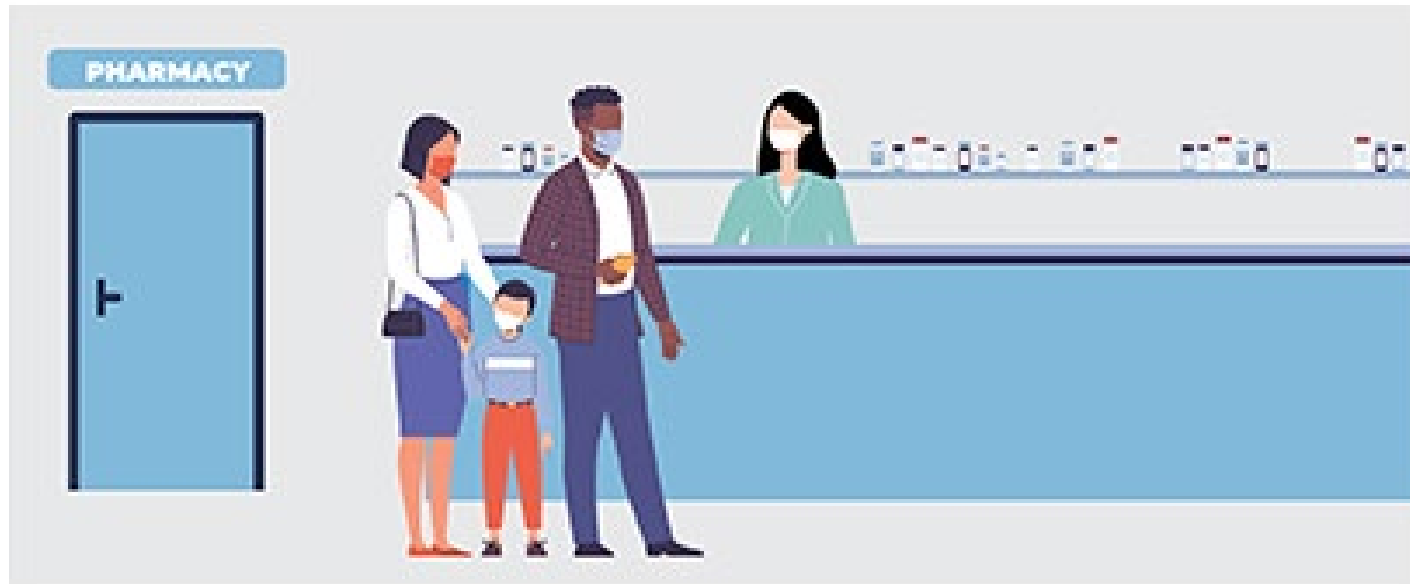
Broward: 83% +1
Dade: 94% +2



COVID-19 Vaccination for Children 5-11 Years Old

FDA authorized the use of the Pfizer-BioNTech COVID-19 Vaccine for children ages 5 through 11 years. The Advisory Committee on Immunization Practices is meeting on Tuesday, November 2 to discuss a recommendation for this age group. Watch online [here](#).

cdc.gov/vaccines



Mitigation strategies to stop the spread of COVID

- The highly transmissible Delta variant continues to be the predominate variant across the United States continuing to be very contagious and causing breakthrough cases.
- Vaccinations remain the most important tool to stop the spread and save lives.
- Hospitalizations are decreased.
- We need to be prepared for the winter spike. Don't Let our guard down. We need to get to moderate in order to ride out the winter resurgence.
- Please, get vaccinated. Do not forget getting Monoclonal Therapy if positive COVID tests for elderly and at-risk population even if vaccinated.



Questions?

Thank You





Palm Beach County should consider institution of measures that are more restrictive when analysis of the following triggers/indicators collectively indicates the presence of resurgence:

[illegible]



Covid-19 Phased Restart (CPR) Program

Resurgence indicators

[illegible]

Covid-19 Phased Restart (CPR) Program

Resurgence indicators

#	Benchmark or indicator	Desired outcome or trend	Trigger/indicator of resurgence	September 28, 2021	October 5, 2021	October 12, 2021	October 19, 2021	October 26, 2021	November 2, 2021
5	Access to COVID-19 testing	Easy access to various types of COVID-19 testing	Marked reported or observed increase in challenges to access to various types of COVID-19 testing	Data no longer available	Data no longer available	Data no longer available	Data no longer available	Data no longer available	Data no longer available
6	Ability to monitor confirmed cases and contacts	Capacity to adequately monitor cases and contacts	Marked reported or observed increase in challenges to contact tracing	DoH-PBC Epi staff remained the same at 182; contact tracing meets target ⁵	DoH-PBC Epi staff remained the same at 202; contact tracing meets target ⁶	DoH-PBC Epi staff remained the same at 202; contact tracing meets target ⁵	DoH-PBC Epi staff remained the same at 196; contact tracing meets target ⁵	DoH-PBC Epi staff remained the same at 196; contact tracing meets target ⁵	DoH-PBC Epi staff remained the same at 196; contact tracing meets target ⁵
7	Level of compliance with Phase 1 related executive orders	High level of compliance with Phase 1 related executive orders	Not applicable.	Data no longer available	Data no longer available	Data no longer available	Data no longer available	Data no longer available	Data no longer available


benchmark or indicator as identified in the PBC EOC's *COVID-19 Phased Restart (CPR) Program*

‡ prior 7-day average

⁵ defined as ≥90% of positive cases contacted and interviewed within 48 hours of notification of test results

⁶contact tracing has been below the ≥90% target of positive cases contacted and interviewed within 48 hours of notification of test results but, the number of staff increased

 = benchmark desired outcome or trend met

 = benchmark desired outcome or trend not met

11/2/2021

previous versions are obsolete



COVID-19 UPDATE

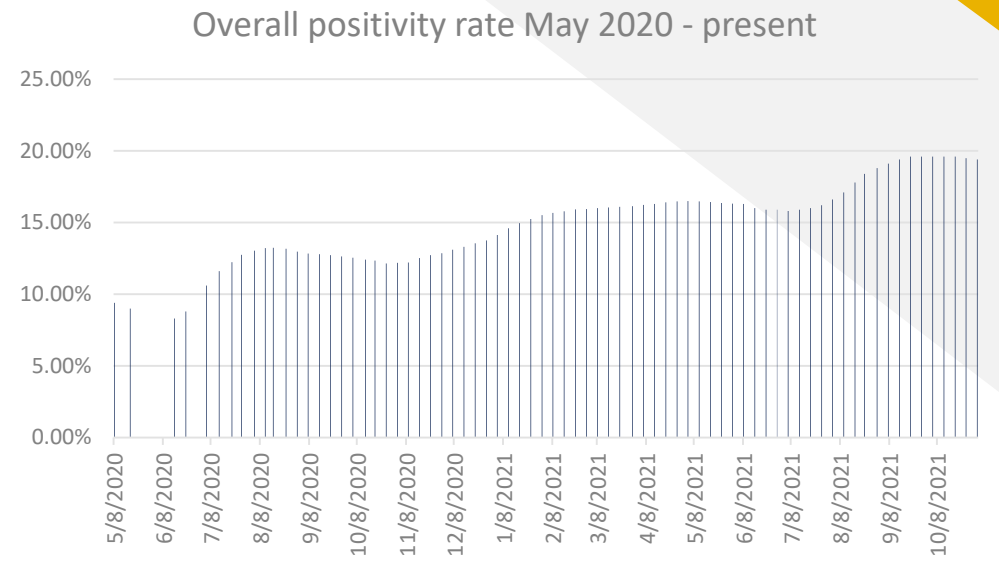
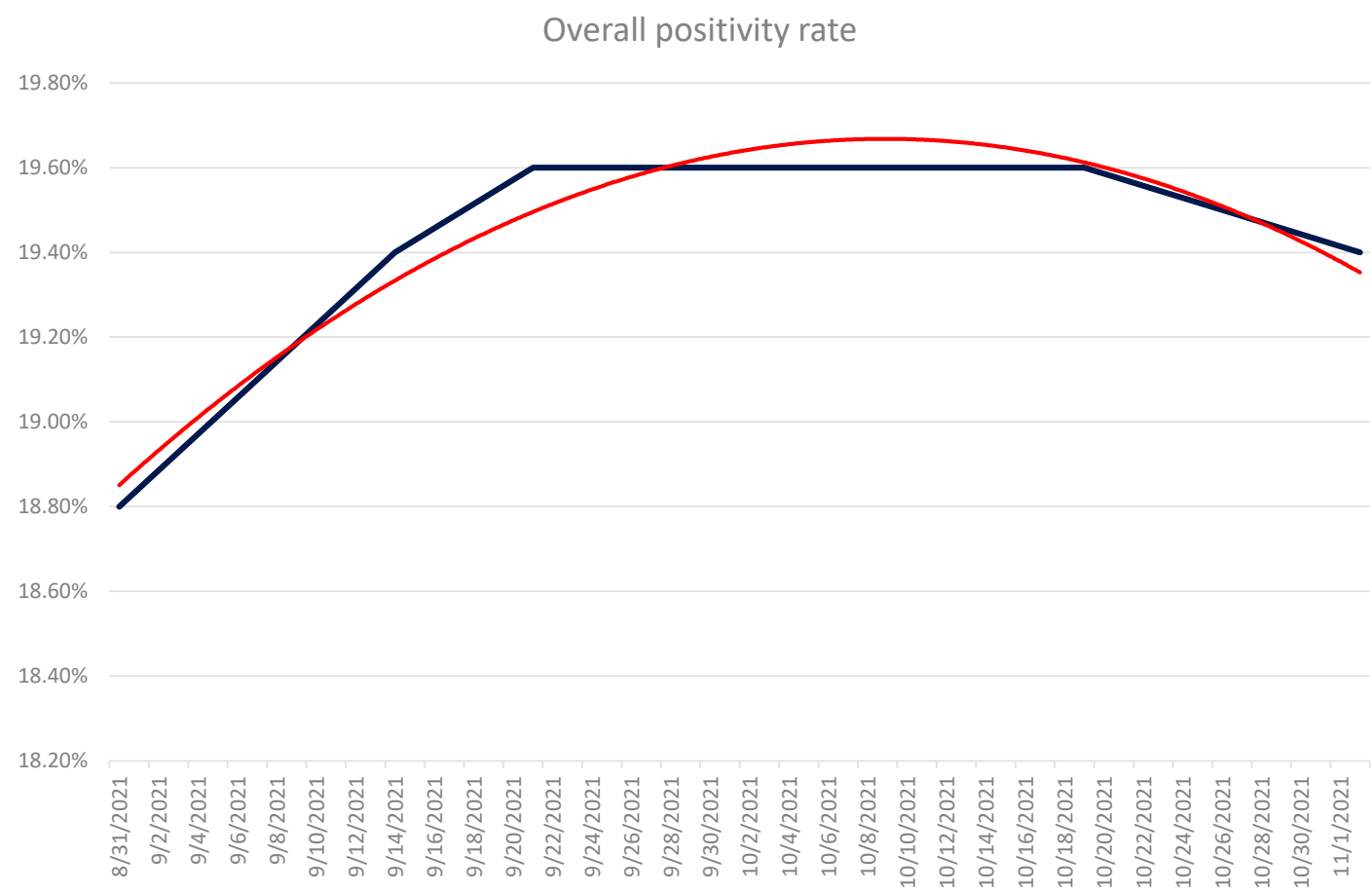
Board of County Commissioners
November 2, 2021

Mary Blakeney, Director
Division of Emergency Management
Public Safety Department



COVID-19 total tested positivity

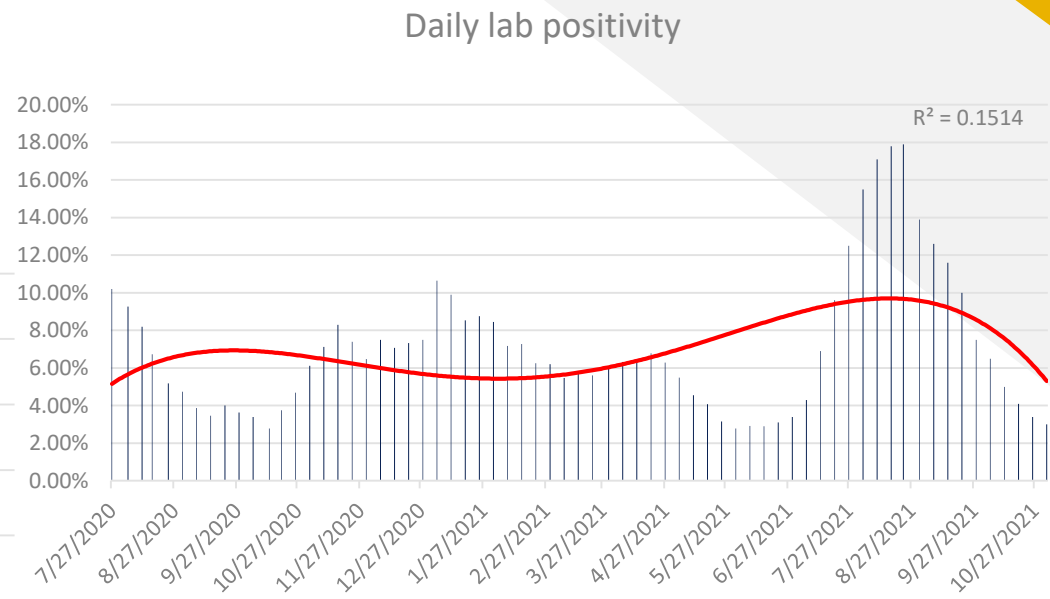
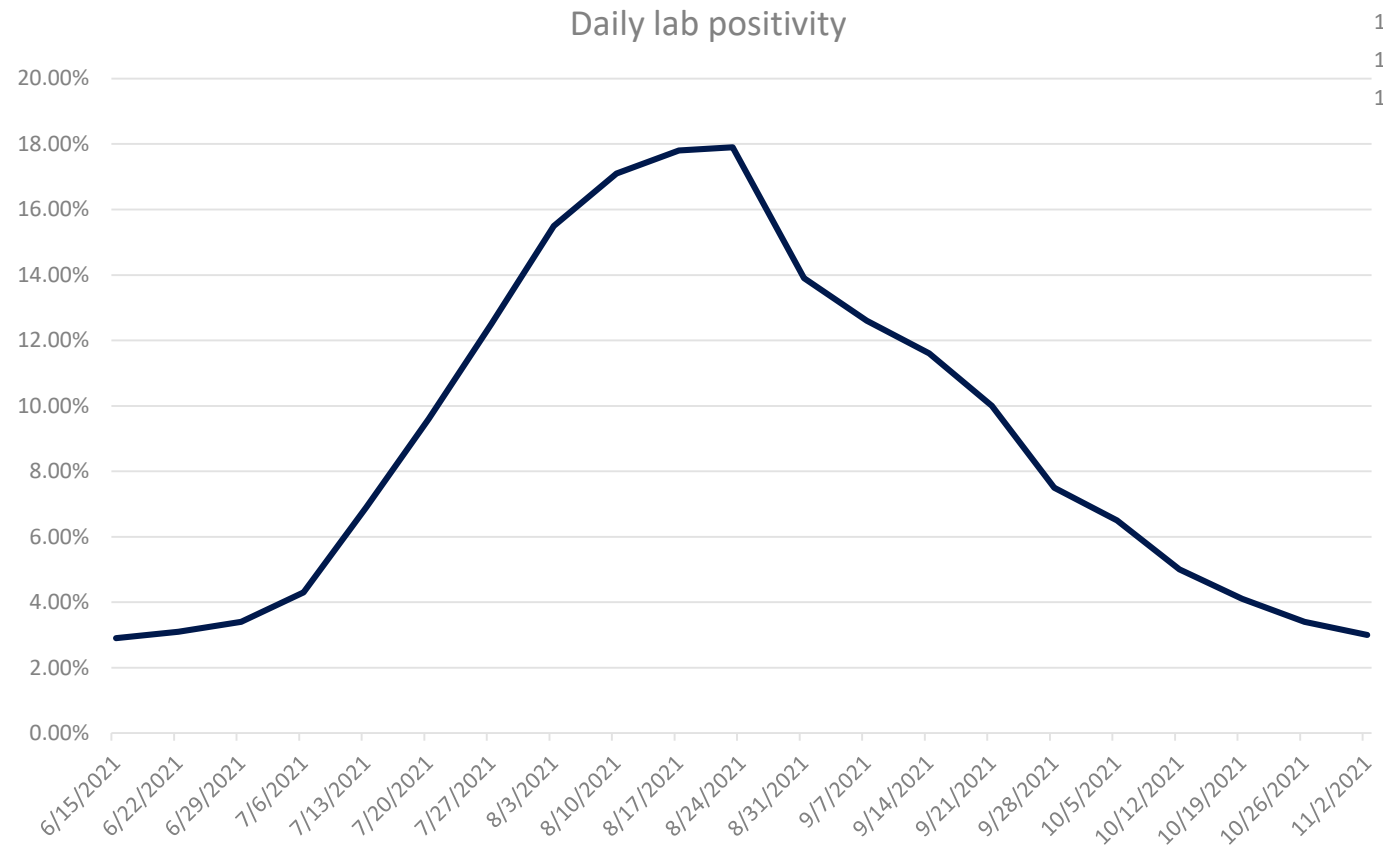
August 31 – November 2, 2021





COVID-19 daily lab positivity

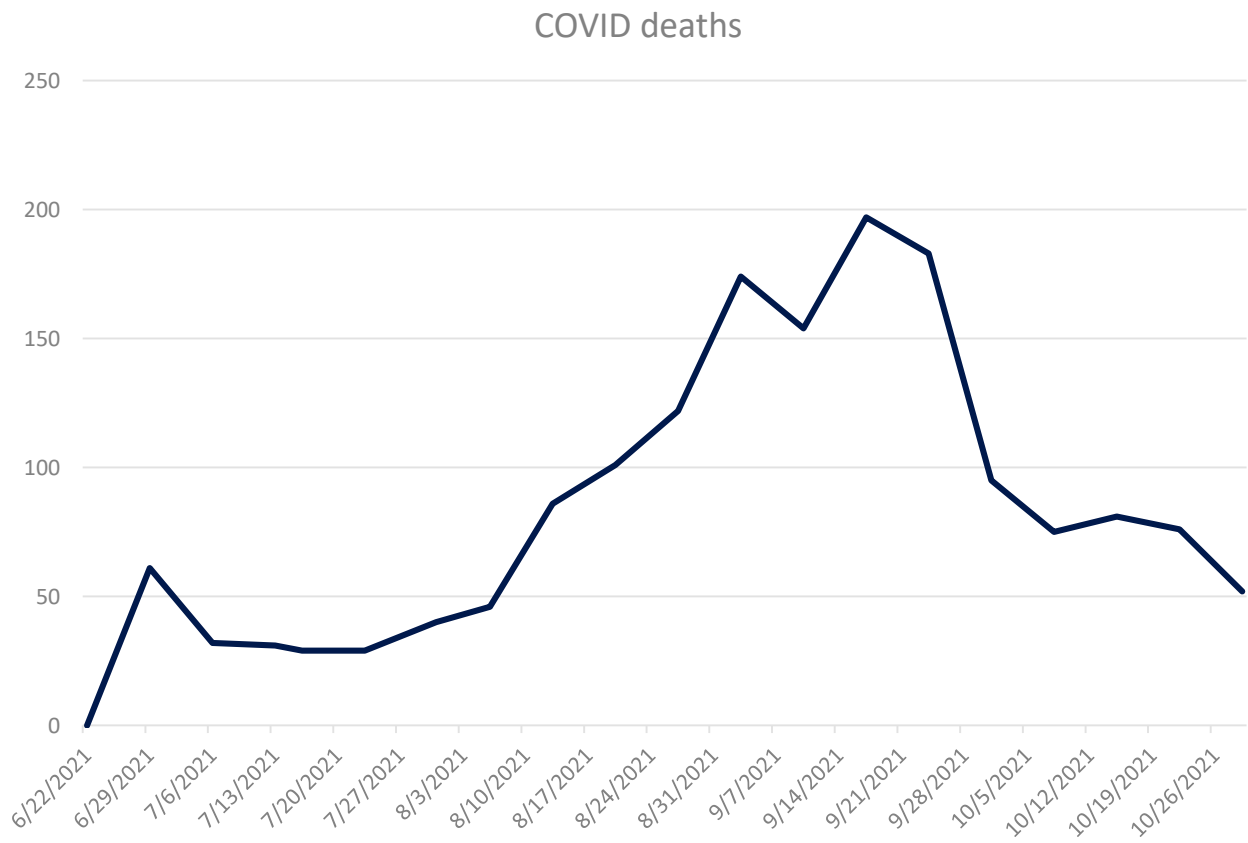
June 15 – November 2, 2021



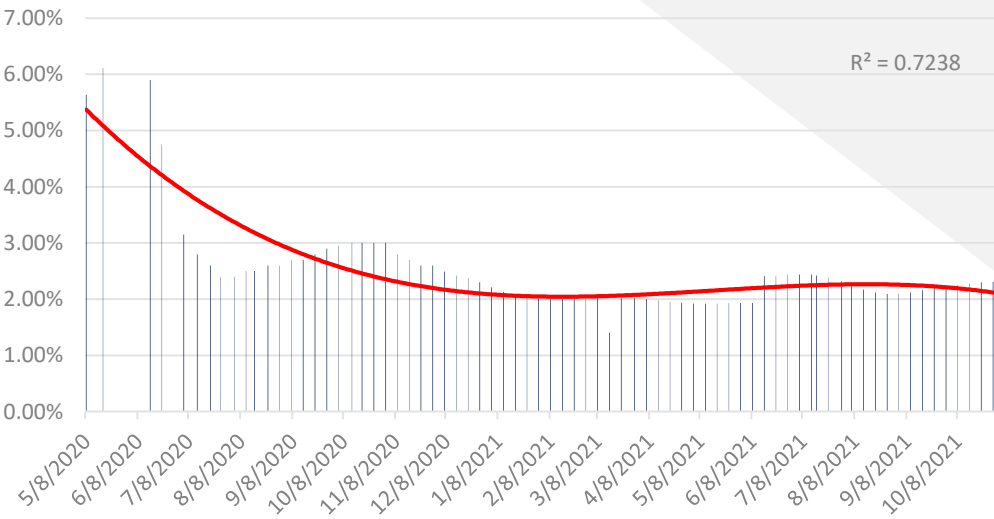


COVID-19 deaths

June 22 – November 2, 2021



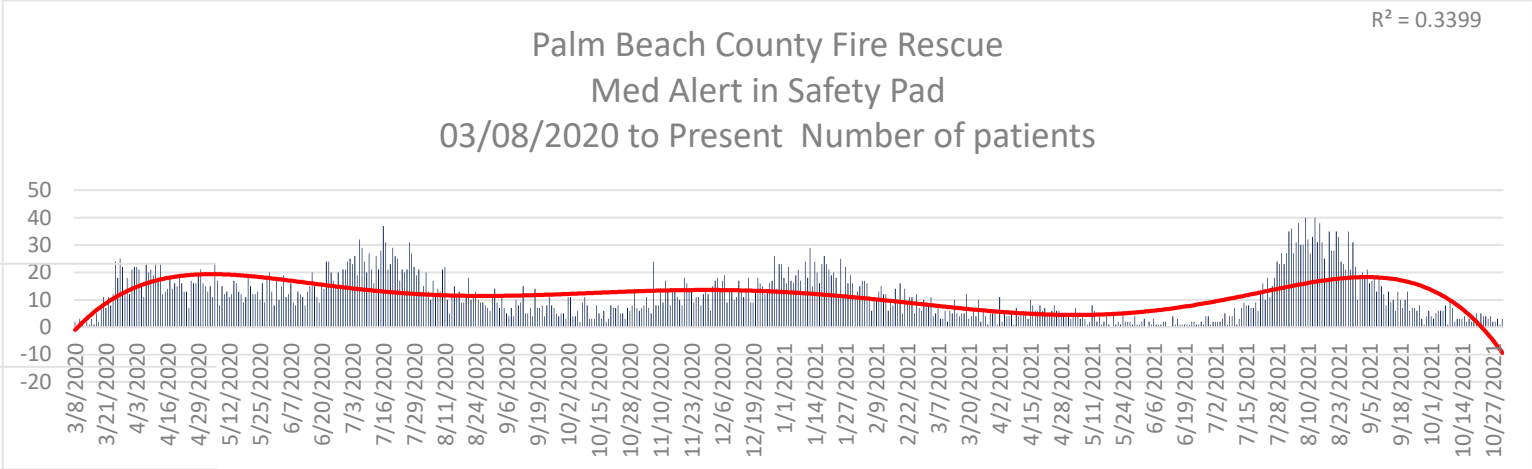
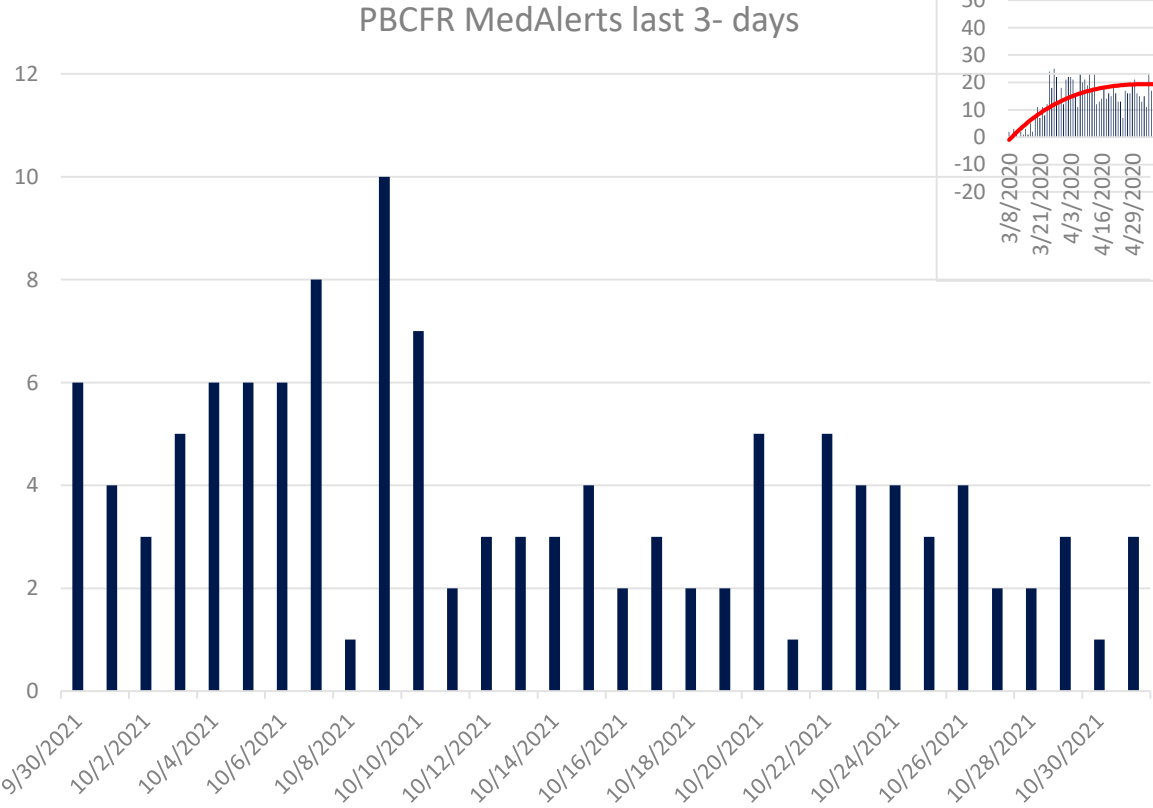
COVID positive deaths May 2020 - present





Daily Med Alerts

September 30 – October 31, 2021



- www.pbcgov.org

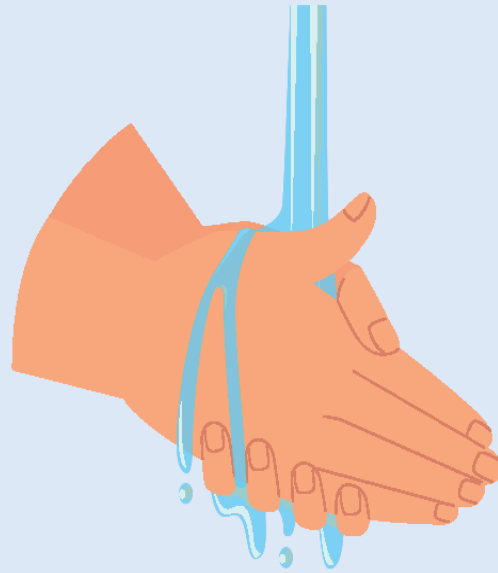


3 W's to reduce risk of COVID-19

Wear a mask



Wash your hands



Watch your distance

