

II. FISCAL IMPACT ANALYSIS

A. Five Year Summary of Fiscal Impact:

Fiscal Years	2022	2023	2024	2025	2026
Capital Expenditures	_____	_____	_____	_____	_____
Operating Costs	_____	_____	_____	_____	_____
External Revenues	_____	_____	_____	_____	_____
In-Kind Match (County)	_____	_____	_____	_____	_____
NET FISCAL IMPACT*	_____	_____	_____	_____	_____
# ADDITIONAL FTE POSITIONS (Cumulative)	_____	_____	_____	_____	_____
Is Item Included in Current Budget:	Yes _____	No _____			
Does this items include use of federal funds?	Yes _____	No _____			

Budget Account No: Fund _____ Dept _____ Unit _____ Object _____ Program _____

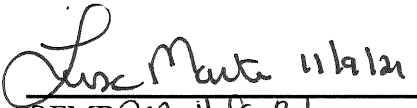
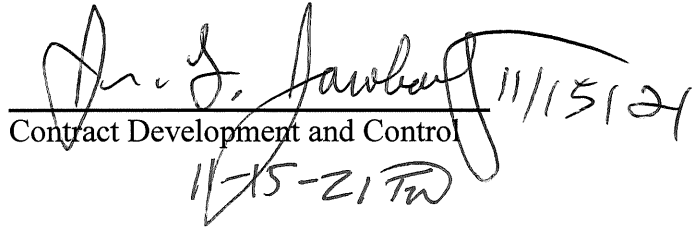
B. Recommended Sources of Funds/Summary of Fiscal Impact:

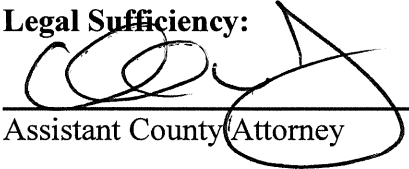
*This item has no fiscal impact.

C. Departmental Fiscal Review: 

III. REVIEW COMMENTS

A. OFMB Fiscal and/or Contract Development Comments:

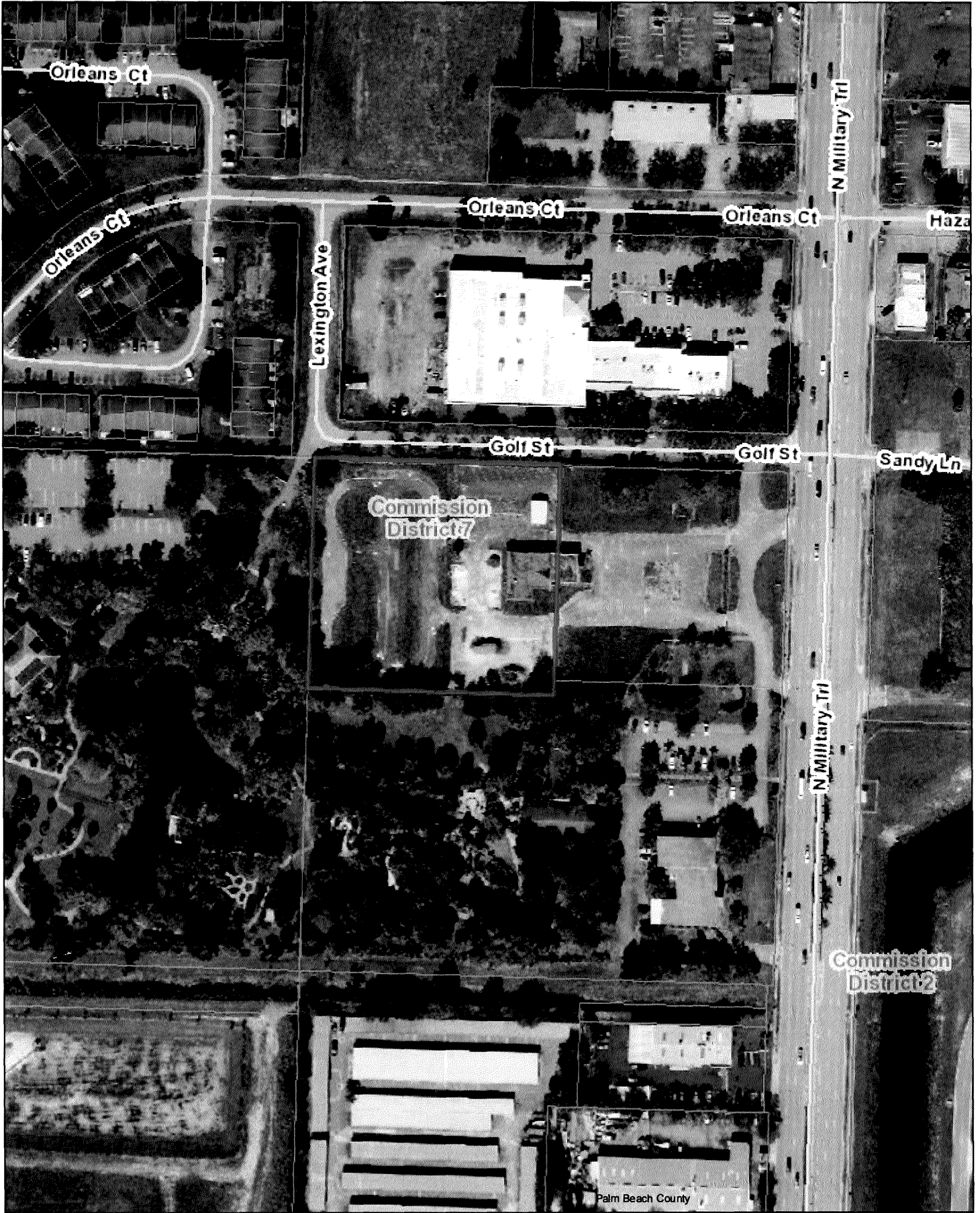
<p><u></u> 11/11/21 OFMB GA 11-8-21 TW 11-9-21</p>	<p><u></u> 11/15/21 Contract Development and Control 11-15-21 TW</p>
-----------------------------------------------------------------------------------------------------------------------------------------------	------------------------------------------------------------------------------------------------------------------------------------------------------------------

B. **Legal Sufficiency:**
 11/16/21
Assistant County Attorney

C. **Other Department Review:**

Department Director

Location Map



RESOLUTION NO. 2021-_____

A RESOLUTION OF THE BOARD OF COUNTY COMMISSIONERS OF PALM BEACH COUNTY, FLORIDA, REQUESTING A SUBLEASE OF THE STATE OF FLORIDA'S LEASE WITH THE UNIVERSITY OF FLORIDA FOR THE STATE-OWNED REAL PROPERTY LOCATED AT 571 N. MILITARY TRAIL, WEST PALM BEACH

WHEREAS, the State of Florida Department of Environmental Protection, Division of State Lands (State), administers the assignment of subleases for real property owned by the State of Florida; and

WHEREAS, the University of Florida Board of Trustees (University) is entering into a 50 year lease agreement (Lease Number 4856) with the State for state-owned real property located at 571 N. Military Trail in West Palm; and

WHEREAS, this state-owned real property sits adjacent to County-owned land and the County's Mounts Botanical Garden (Mounts); and

WHEREAS, the County and University, through its Institute of Food and Agricultural Sciences, have historically partnered at Mounts through the Palm Beach County Cooperative Extension Service to provide mutually beneficial educational, agricultural and community services to County residents engaged in agriculture, horticulture, human sciences, and youth development.

WHEREAS, the County has identified an opportunity to further the mission and educational and programmatic goals of the Palm Beach County Cooperative Extension Service by using this state-owned real property and to potentially construct a Horticulture Education & Welcome Center on a part of, or adjacent to, this real property; and

WHEREAS, the Board of County Commissioners finds it to be in the best interest of the County to sublease the state-owned real property located at 571 N. Military Trail in West Palm

Beach to further the mission and goals of the Palm Beach County Cooperative Extension Service and Mounts.

NOW THEREFORE, BE IT RESOLVED BY THE COUNTY COMMISSIONERS OF PALM BEACH COUNTY, FLORIDA, that:

SECTION 1. The foregoing recitals are true and correct.

SECTION 2. The Board of County Commissioners hereby requests that the University and the State permit County to sublease the state-owned real property located at 571 N. Military Trail in West Palm Beach for the duration of the State's 50 year lease with the University. The sublease shall be subject to final approval by the County.

SECTION 3. This Resolution shall become effective upon passage.

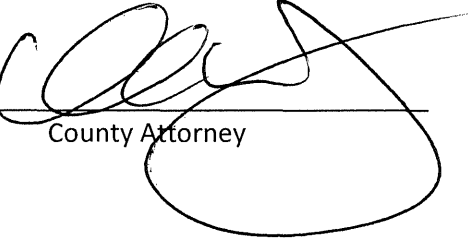
The foregoing Resolution was offered by Commissioner _____, who moved its adoption. The motion was seconded by Commissioner _____, and upon being put to a vote, the vote was as follows:

- Commissioner Maria G. Marino, District 1 _____
- Commissioner Gregg K. Weiss, District 2 _____
- Commissioner Dave Kerner, District 3 _____
- Commissioner, Robert S. Weinroth, District 4 _____
- Commissioner Maria Sachs, District 5 _____
- Commissioner Melissa McKinlay, District 6 _____
- Commissioner Mack Bernard, District 7 _____

The Mayor thereupon declared the Resolution duly passes and adopted this _____ day of _____, 2021.

APPROVED AS TO
LEGAL SUFFICIENCY

By:



County Attorney

PALM BEACH COUNTY, FLORIDA, BY ITS
BOARD OF COUNTY COMMISSIONERS

**JOSEPH ABRUZZO, CLERK OF THE CIRCUIT
COURT AND COMPTROLLER**

By:

Deputy Clerk