

**PALM BEACH COUNTY
BOARD OF COUNTY COMMISSIONERS
AGENDA ITEM SUMMARY**

=====
Meeting Date: May 24, 2022

Department: Public Safety

=====
I. EXECUTIVE BRIEF

Title: 2022 Storm Season Preparedness Report

Summary: The purpose of this report is to provide an update on the 2022 Atlantic Hurricane season and the Public Safety Department's Division of Emergency Management (DEM) preparedness strategies for the upcoming storm season. The DEM relies on all County departments, as well as, the Board of County Commissioners and numerous local, state, federal, and non-profit volunteer agencies to provide support and resources to help Palm Beach County plan, respond, and recover from disasters. The DEM has worked with numerous stakeholder agencies to ensure the safety and well-being of our residents and employees of Palm Beach County. **Countywide** (DB)

Background and Justification: Pursuant to Florida Statutes, Chapter 252, it is the county's responsibility to be prepared to respond to, and recovery from, any hazard that threatens the lives and property of residents and visitors of Palm Beach County. Our citizens rely on us for emergency shelters, as well as, other countywide disaster functions that are a critical component of our emergency response system.

Attachments: PowerPoint

=====
Recommended By: Stephanie Segnoha - 1/16/2022
Department Director Date

Approved By: For: Neil A. Blum 5/16/2022
Assistant County Administrator Date

FISCAL IMPACT ANALYSIS

A. Five Year Summary of Fiscal Impact

Fiscal Years	<u>2022</u>	<u>2023</u>	<u>2024</u>	<u>2025</u>	<u>2026</u>
Personal Services	_____	_____	_____	_____	_____
Operating Costs	_____	_____	_____	_____	_____
Capital Expenditures	_____	_____	_____	_____	_____
External Revenues	_____	_____	_____	_____	_____
Program Income (County)	_____	_____	_____	_____	_____
In-Kind Match (County)	_____	_____	_____	_____	_____
Net Fiscal Impact	*	_____	_____	_____	_____

ADDITIONAL FTE

POSITIONS (Cumulative) _____ 0 _____ 0 _____ 0 _____ 0 _____ 0

Is Item Included In Current Budget? Yes _____ No _____
 Does this item include the use of federal funds? Yes _____ No _____

Budget Account Exp No: Fund _____ Dept. _____ Unit _____ Obj. _____ Prog. _____
 Rev No: Fund _____ Dept. _____ Unit _____ Rev. _____ Prog. _____

B. Recommended Sources of Funds/Summary of Fiscal Impact:

*There is no fiscal impact associated with this agenda item.

C. Departmental Fiscal Review: _____ *[Signature]* 5/11/22

III. REVIEW COMMENTS

A. OFMB Fiscal and/or Contract Dev. and Control Comments:

[Signature] 5/12/22

 OFMB 51228 UM 5/12

[Signature] 5/13/22

 Contract Administration
 5-13-22 TW

B. Legal Sufficiency:

[Signature] 5/16/22

 Assistant County Attorney

C. Other Department Review:

 Department Director

This summary is not to be used as a basis for payment.

DISASTER PREPAREDNESS: STORM SEASON REPORT

Todd Bonlarron
Assistant County Administrator

Stephanie Sejnoha
Director, Department of Public Safety

Mary Blakeney
Director, Division of Emergency Management



AGENDA

- Emergency Management Overview
- Core Hazards
- 2021 Hurricane Season in Review and the 2022 Predictions
- Preparedness Cycle
- How You Can Help



DIVISION OF EMERGENCY MANAGEMENT

To be a world class
emergency
management agency
keeping our community
safe and resilient by
working together with
our partners and the
public as a team.





Executive Policy Group
 County Administrator
 Mayor, Board of County Commissioners
 Deputy County Administrator
 Public Safety Dept. Director
 Palm Beach County Attorney
 Emergency Management Director
 Palm Beach County Sheriff
 Palm Beach Co. Fire-Rescue Administrator
 Florida Health Palm Beach Co. Director

Board of County Commissioners
 PBC Constitutional Officers
 State Attorney
 Judiciary - 15th Judicial Circuit
 Public Defender
 Property Appraiser
 Tax Collector
 Clerk & Comptroller
 Supervisor of Elections

 PBC School Board
 State and Federal delegations
 League of Cities
 Military Support/FLNG

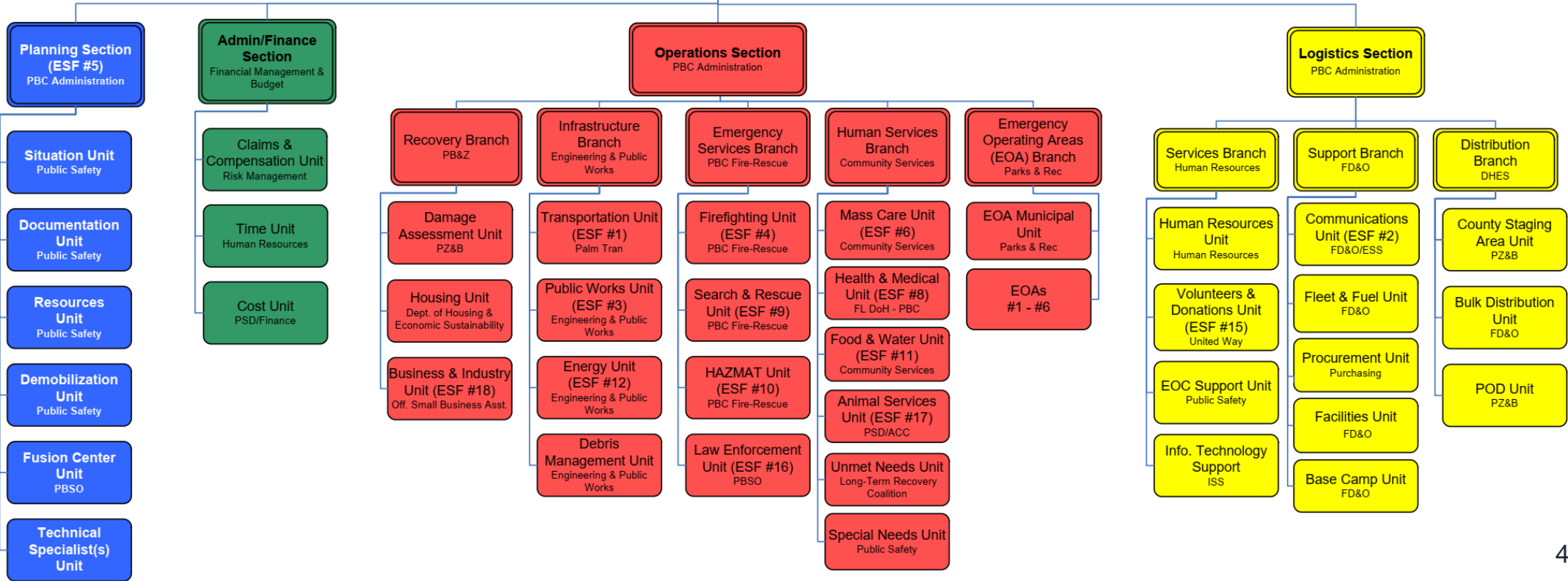
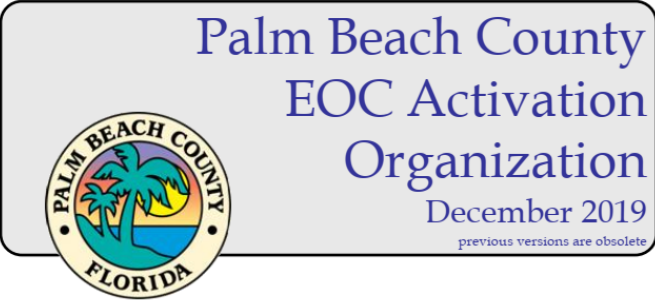
**County Administrator
 Incident Commander**

Public Information
 Unit (ESF #14)
 Public Affairs

Emergency Information Unit
 (EIC)
 Public Safety

Safety Officer
 Risk Management

Liaison Officer
 PBC Administration



12 CORE HAZARDS



Core Hazards

Natural Hazards

Severe Weather

Floods

Ag. Pests & Diseases

Fire

Communicable Diseases

Technological Hazards

Transportation

Hazardous Materials

Nuclear Power Plant

Dike Failure

Human Caused Hazards

Domestic Security

Workplace/School Violence

Mass Migration

What are we learning about hurricanes?

40 Training Session

50 Workshops

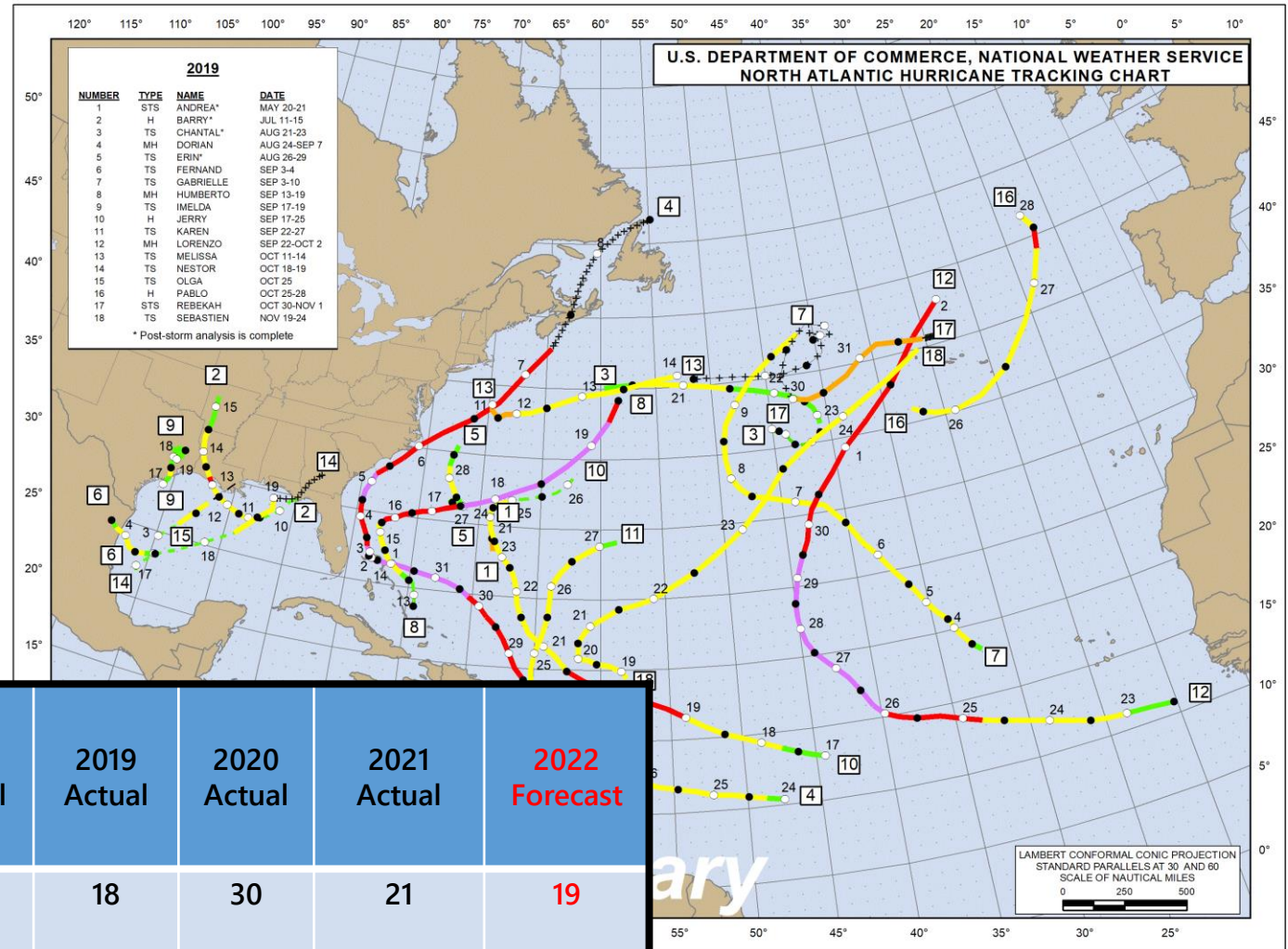
Robust Exhibit Hall

Over 2,400 attendees



2022 Atlantic Hurricane Season

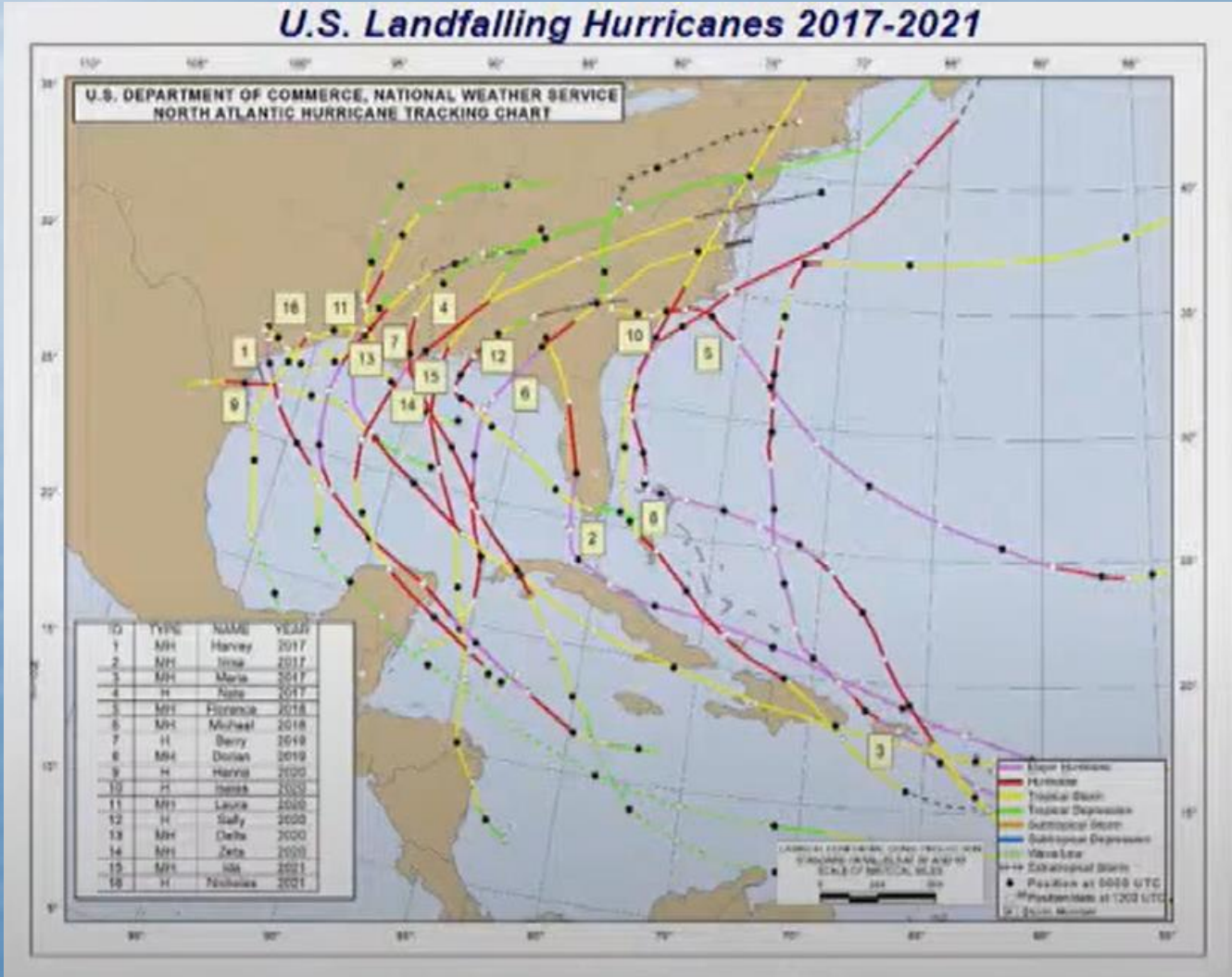
- 2021 was forecasted to be and was actually an above average year
- 2022 is forecasted to be above average



	Avg	2017 Actual	2018 Actual	2019 Actual	2020 Actual	2021 Actual	2022 Forecast
Named	14	17	15	18	30	21	19
Hurricanes	7	10	8	6	13	7	9
Intense (≥ Cat. 3)	3	6	2	3	6	4	4



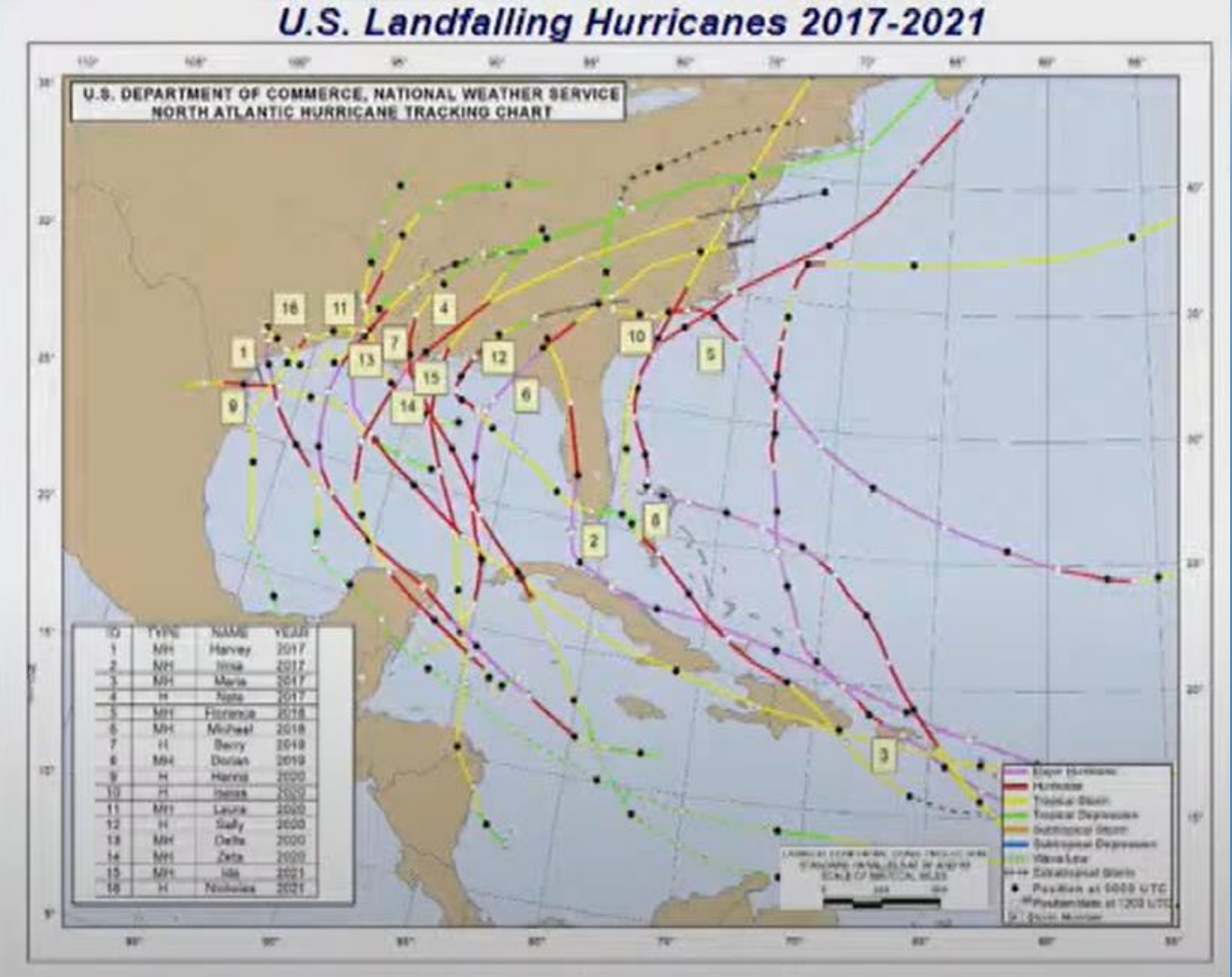
IT HAS BEEN BUSY



16 hurricanes have made landfall in the U.S. since 2017 (7 were major)



IT HAS BEEN BUSY

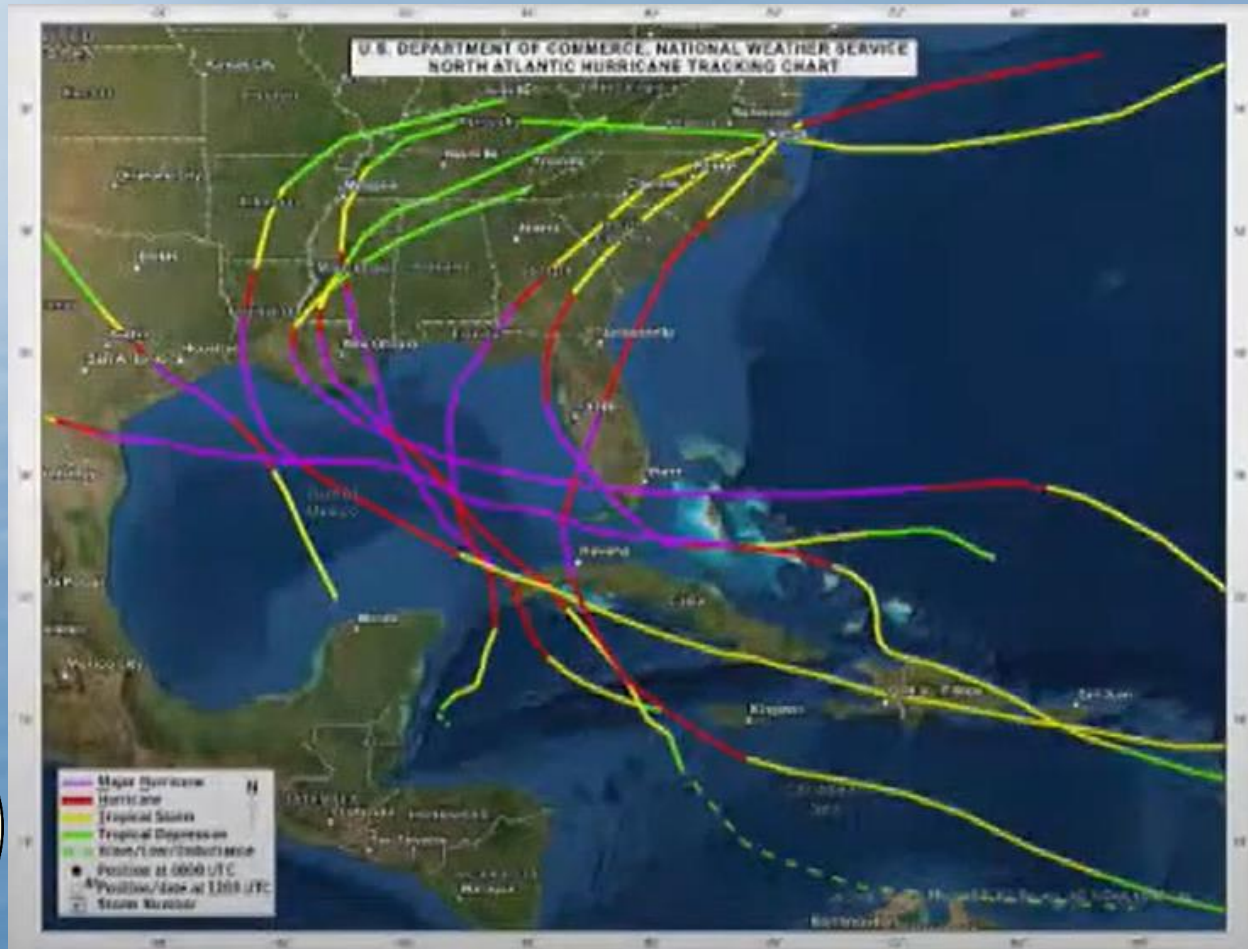


More U.S. land falling CAT 4 and CAT5 hurricanes since 2017 than from 1963-2016



PLANNING REALITIES

The Nation's Strongest – 150 mph or greater
All but 1 were Tropical Storms 3 days before landfall

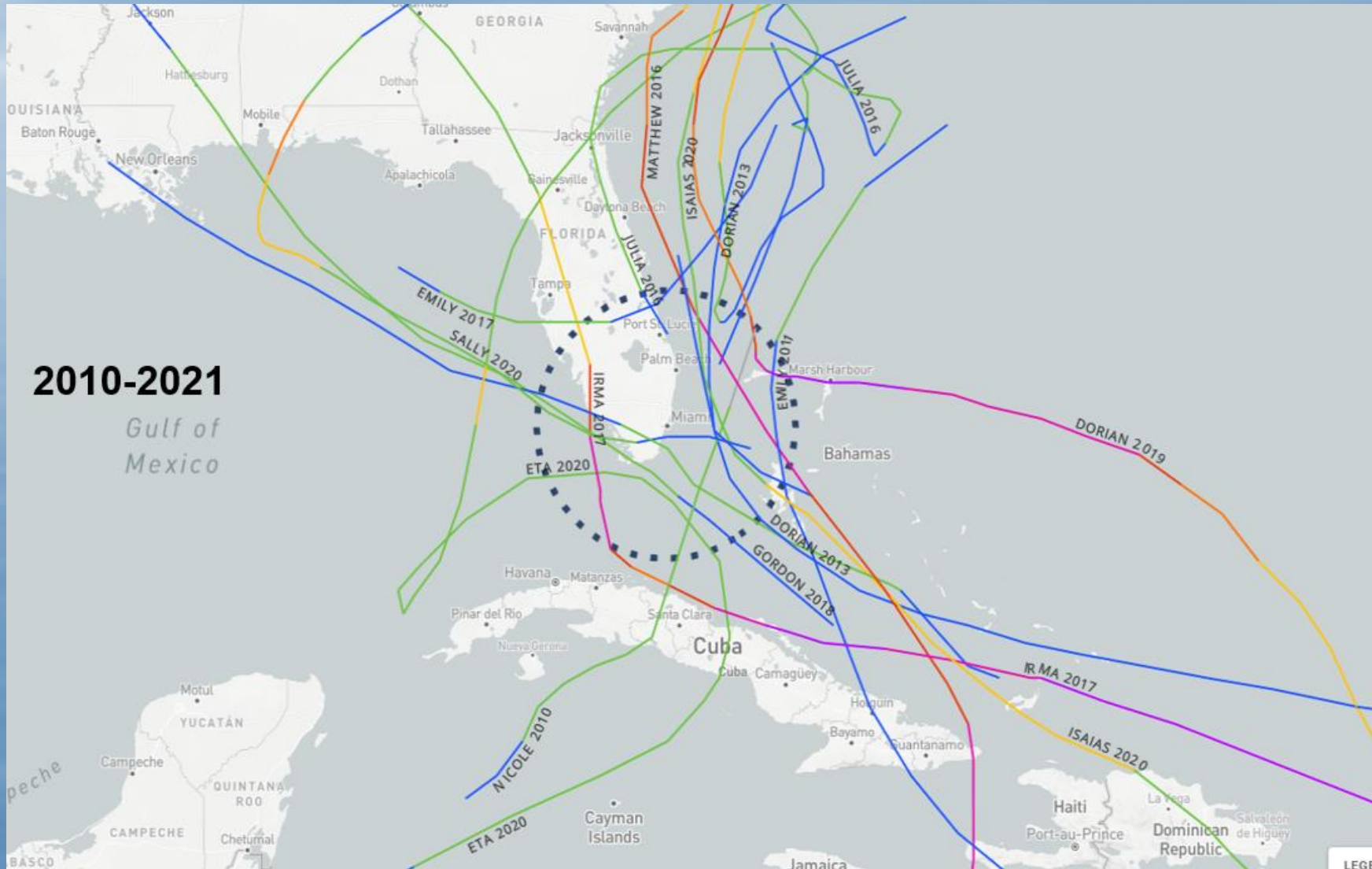


U.S. 150 mph+

- 1919 – Storm 2
- 1932 – Storm 2
- 1935 – Labor Day
- 1969 – Camille
- 1992 – Andrew
- 2004 – Charley
- 2018 – Michael
- 2020 – Laura
- 2021 – Ida



PLANNING REALITIES – SOUTH FLORIDA IS “HURRICANE COUNTRY”





Disasters Don't Plan Ahead. **YOU CAN.**

- Encourage planning for disasters a priority for everyone; employees, residents, family & friends
- Encourage your businesses to be prepared
- Encourage your constituents to be prepared at every opportunity



OUR MESSAGE IS SIMPLE



Make a plan



Build a kit



Be informed



Get involved



www.ReadyPBC.com



1



**MAKE
A PLAN**

With Your Family

Ready Palm Beach County
www.readypbc.org

2



**BUILD
A KIT**

For Your Household

Ready Palm Beach County
www.readypbc.org

3



**GET
INVOLVED**

Volunteer

Ready Palm Beach County
www.readypbc.org

4



**BE
INFORMED**

Updated Critical Information
at Your Fingertips

Download our FREE app:
PBCDART

MAKE A PLAN

- Have a plan:
 - Everyone has a duty to be prepared;
 - Know if you need to evacuate:
 - If so, know where you are going and how to get there (within County)
 - Identify a meetings place and create a communication plan with family and friends
 - If you plan to stay home, shutter and shelter in place



www.ReadyPBC.com



1

MAKE A PLAN

With Your Family

Ready Palm Beach County
www.readypbc.org

2

BUILD A KIT

For Your Household

Ready Palm Beach County
www.readypbc.org

3

GET INVOLVED

Volunteer

Ready Palm Beach County
www.readypbc.org

4

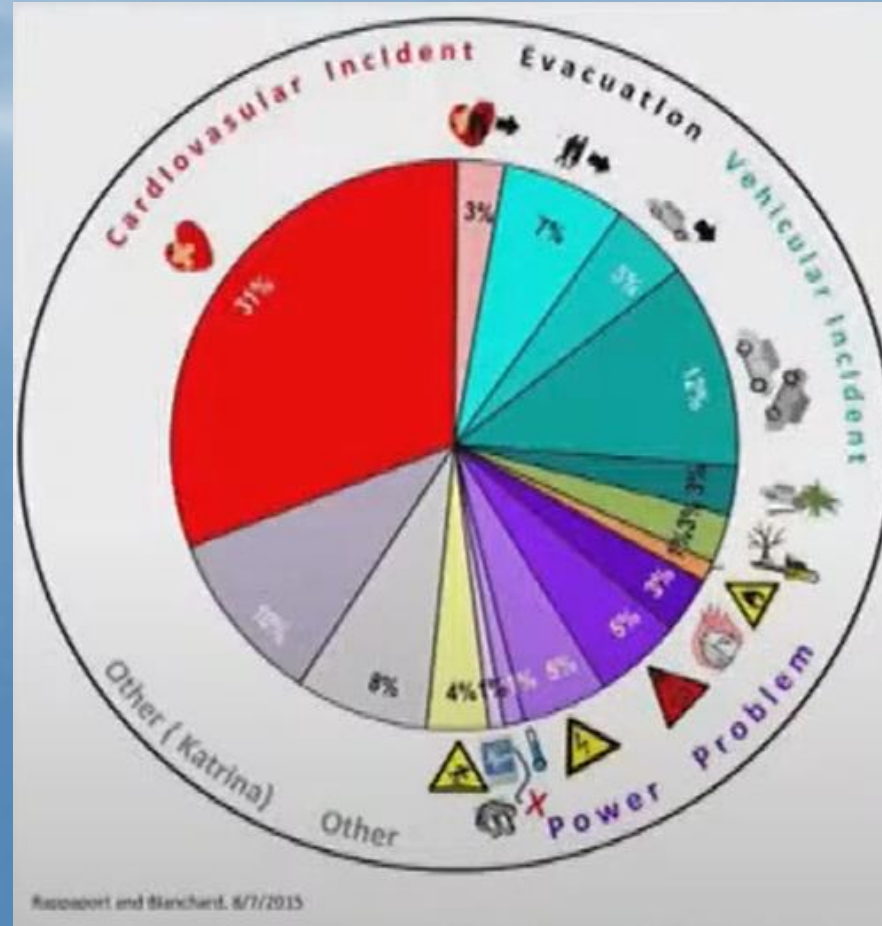
BE INFORMED

Updated Critical Information
at Your Fingertips

Download our FREE app:
PBCDART

MAKE A PLAN

- Have a plan:
 - Know your home:
 - Understand your mitigation measures
 - Windows/Shutters
 - Roof Bracing
 - Garage Door
 - Water Drainage
 - Be generator safe
 - Keep Outside
 - Away from Doors and Windows
 - Do an insurance check-up



1 **MAKE A PLAN**
With Your Family
Ready Palm Beach County
www.readypbc.org

2 **BUILD A KIT**
For Your Household
Ready Palm Beach County
www.readypbc.org

3 **GET INVOLVED**
Volunteer
Ready Palm Beach County
www.readypbc.org

4 **BE INFORMED**
Updated Critical Information
at Your Fingertips
Download our FREE app:
PBCDART

www.ReadyPBC.com

BUILD A KIT

- Make a kit; keep it stocked year round
 - Canned food and snacks (can opener)
 - Water – 1 gallon per person per day
 - Prescriptions and over the counter medication
 - Flashlights, battery powered radio and extra batteries
 - Personal hygiene supplies
 - Baby items
 - Pet items
 - Paper products and plastic utensils
 - Cash
 - Important documents



www.ReadyPBC.com



1

 **MAKE A PLAN**

With Your Family

Ready Palm Beach County
www.readypbc.org

2

 **BUILD A KIT**

For Your Household

Ready Palm Beach County
www.readypbc.org

3

 **GET INVOLVED**

Volunteer

Ready Palm Beach County
www.readypbc.org

4

 **BE INFORMED**

Updated Critical Information
at Your Fingertips

Download our FREE app:
PBCDART

GET INVOLVED

- Volunteer with an organization active in disasters
 - Amateur Radio Club
 - American Red Cross
 - Salvation Army
 - United Way
 - Your Own faith based organization
- Or get involved within your own community and help your neighbors by becoming a Community Emergency Response Team Member (CERT)
 - Check on those living alone or who are elderly



www.ReadyPBC.com



1

MAKE A PLAN

With Your Family

Ready Palm Beach County
www.readypbc.org

2

BUILD A KIT

For Your Household

Ready Palm Beach County
www.readypbc.org

3

GET INVOLVED

Volunteer

Ready Palm Beach County
www.readypbc.org

4

BE INFORMED

Updated Critical Information
at Your Fingertips

Download our FREE app:
PBCDART

BE INFORMED

- Be informed:
 - Sign up for AlertPBC
 - Download PBC DART app
 - Follow us on Social Media
 - Monitor local media, our website, and our social media for preparedness information and protective actions



www.ReadyPBC.com



1

MAKE A PLAN

With Your Family

Ready Palm Beach County
www.readypbc.org

2

BUILD A KIT

For Your Household

Ready Palm Beach County
www.readypbc.org

3

GET INVOLVED

Volunteer

Ready Palm Beach County
www.readypbc.org

4

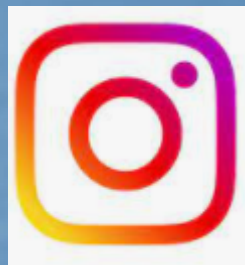
BE INFORMED

Updated Critical Information
at Your Fingertips

Download our FREE app:
PBCDART

RESOURCES

- ReadyPBC.com
- AlertPBC.com
- PBC DART
- Plagiarize all you want!

An infographic titled "ARE YOU DISASTER READY PALM BEACH COUNTY?" with four main steps: 1. MAKE A PLAN (for your family), 2. BUILD A KIT (for your household), 3. GET INVOLVED, and 4. BE INFORMED. A central circular graphic says "KNOW YOUR ZONE" with the Palm Beach County logo. It also includes logos for Palm Beach County Citizen Corps and EM (Emergency Management), and social media links for PBCDEM and @PBCDEM. Contact information for the Board of County Commissioners Division of Emergency Management is provided at the bottom.

**ARE YOU DISASTER READY
PALM BEACH COUNTY?**

1
MAKE A PLAN
Ready Palm Beach County
www.readypbc.org

2
BUILD A KIT
Ready Palm Beach County
www.readypbc.org

3
GET INVOLVED
Ready Palm Beach County
www.readypbc.org

4
BE INFORMED
Updated Critical Information
at Your Fingertips
Download our FREE app:
PBCDART

KNOW YOUR ZONE

**PALM BEACH COUNTY
FLORIDA**

**Palm Beach County
citizen corps**
UNITING COMMUNITIES
PREPARING THE NATION

EM
together
emergencies
are
managed

Connect With Us
PBCDEM
@PBCDEM

Board of County Commissioners
Division of Emergency Management
712-6400



Palm Beach County's Emergency Notification System

AlertPBC allows you to opt in to receive notifications via **phone calls, text messaging, e-mail and more** based on locations you care about. The system will be used to notify you about **imminent threats to health and safety**, such as:



**severe
weather**



flooding



gas leaks



**police
activity**

and more

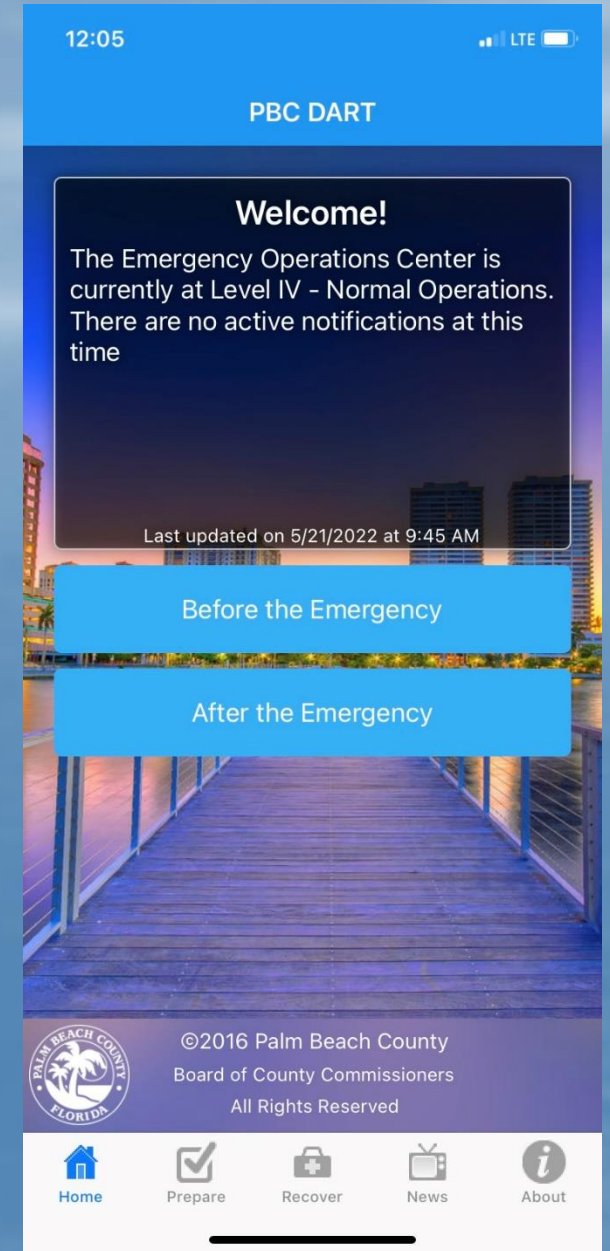


Sign up for notifications at
www.AlertPBC.com

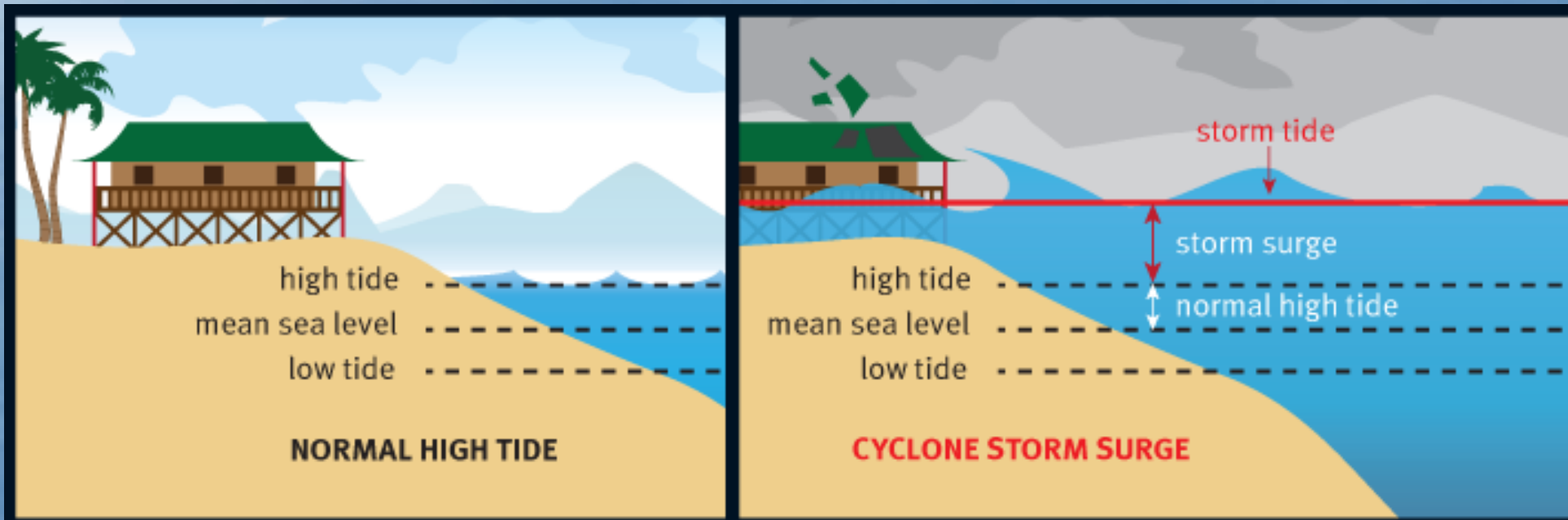
PBC DART

Disaster Awareness & Recovery Tool

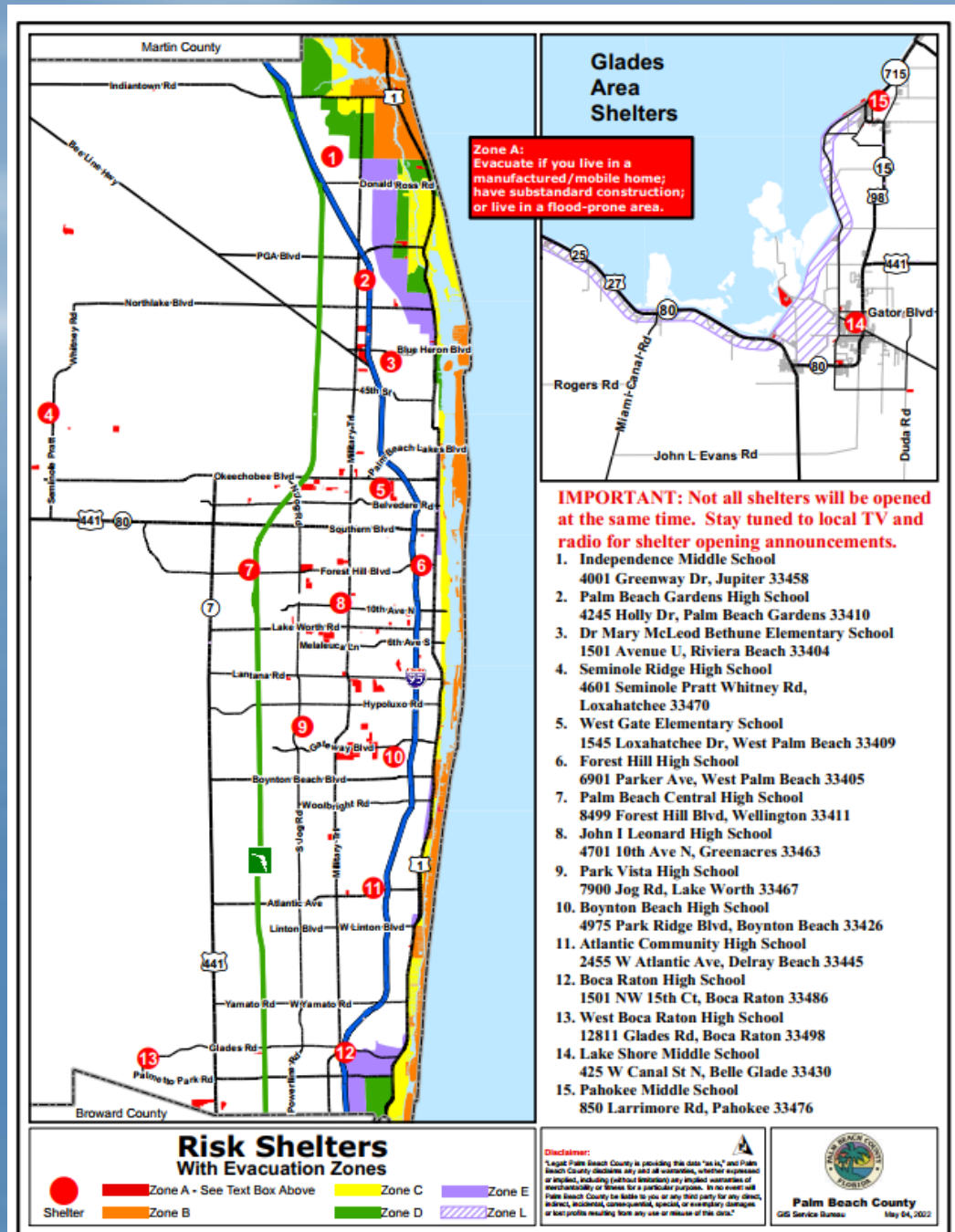
- Smartphone application available *free* at Google Marketplace and Apple iTunes
- Evacuation tool
- Shelter location tool
- Building Supply and Grocery Stores with Generators
- Gas Stations with Transfer Switches
- iDART (Individual DAmage Reporting Tool)
 - To report individual homeowner damage and flooding
- bDART (Business DAmage Reporting Tool)
 - To report business damage and flooding



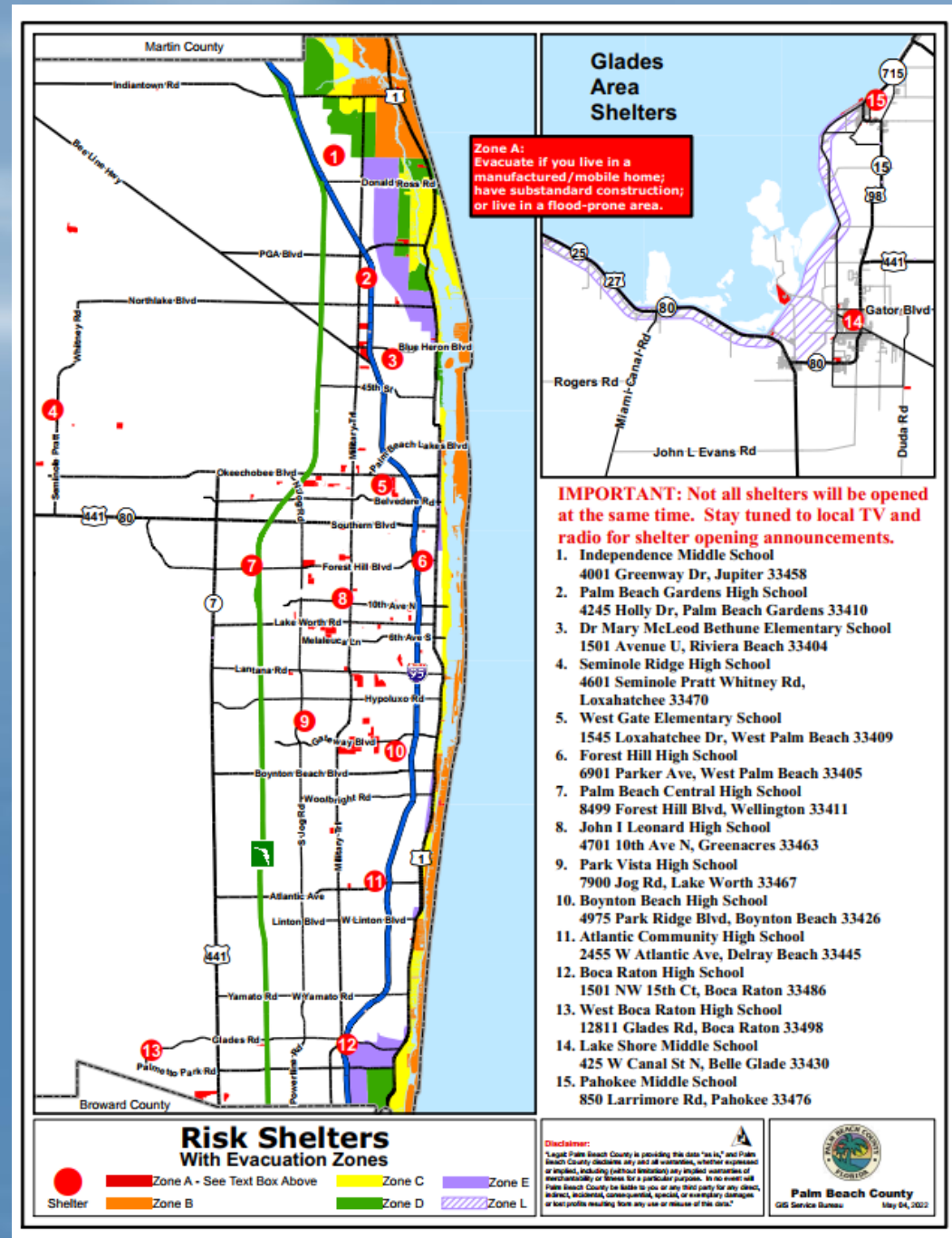
WHY EVACUATE?



HURRICANE EVACUATION ZONES



HURRICANE RISK SHELTERS



EMPLOYEE DISASTER RESPONSE PROGRAM

Position	# of County Employees
Department Essential	3,934
EOC Essential	215
Emergency Information Center (EIC)	107
Disaster Service Agents	906
Disaster Team Leaders	66
Disaster Field Workers	80



EMPLOYEE DISASTER RESPONSE PROGRAM



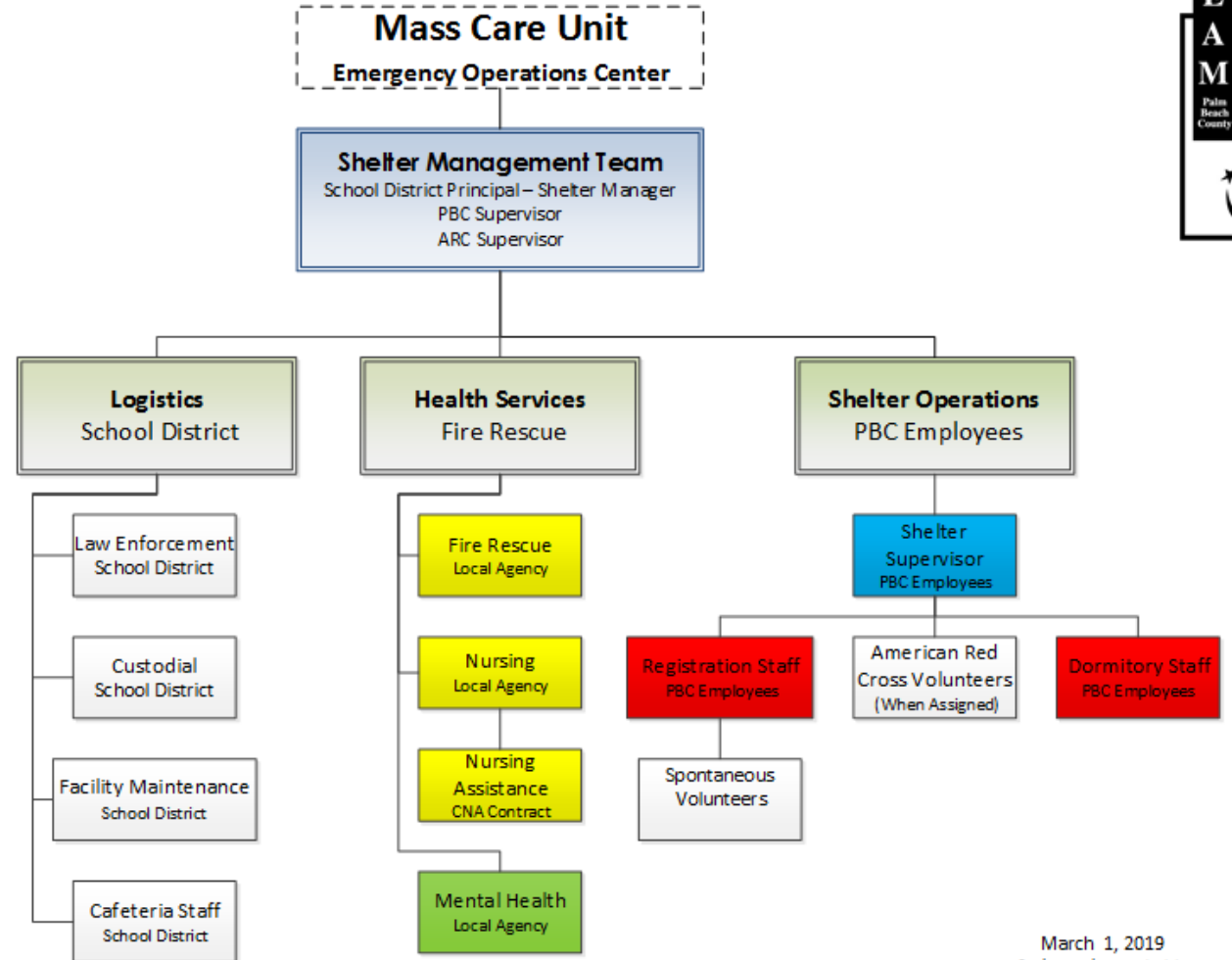
SHELTER STAFFING

- Shelter leadership
- Shelter staffing

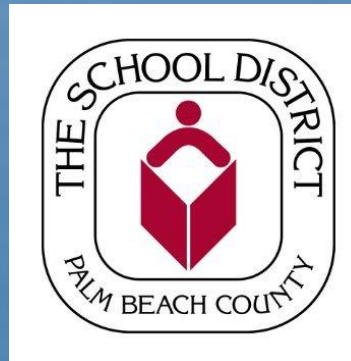
Function/role	# of Employees Assigned
Shelter supervisors	67
Shelter support staff	595



Palm Beach County General Population Shelter Organizational Chart



March 1, 2019
Previous versions are obsolete



TRAINING & EXERCISES



SO HOW CAN YOU HELP?





YOUR ROLE

Understand our response priorities:

- **Priority 1:** Life saving/life safety & security
 - high hazard areas,
 - high-risk populations, and
 - search and rescue situations
- **Priority 2:** Establish communications
- **Priority 3:** Mission critical operations
 - Meet basic human needs
- **Priority 4:** Mission critical infrastructure
 - Open roads, schools, businesses
- **Priority 5:** Environmental hazard mitigation





YOUR ROLE

Reinforce EOC actions & priorities:

- Assist with federal declarations:
 - Work with lawmakers to “turn on” FEMA programs
 - Special requests for federal assistance
 - Reimbursement support
- Consistent messaging:
 - Reinforce protective actions
 - Reinforce public information



**THANK
YOU**



**ANY
QUESTIONS?**