

PALM BEACH COUNTY
BOARD OF COUNTY COMMISSIONERS
AGENDA ITEM SUMMARY

Meeting Date:	December 6, 2022	<input checked="" type="checkbox"/>	Consent	<input type="checkbox"/>	Regular
		<input type="checkbox"/>	Workshop	<input type="checkbox"/>	Public Hearing
Department:	Engineering & Public Works Department				
Submitted By:	Engineering & Public Works Department				
Submitted For:	Roadway Production Division				

I. EXECUTIVE BRIEF

Motion and Title: Staff recommends motion to approve: Consultant Service Authorization (CSA) No. 3, to the Construction Engineering Inspection (CEI) Annual Services Contract (R2021-0883) dated July 13, 2021 (Contract) with BCC Engineering, LLC (BCCE), in the amount of \$101,811.53 for the State Road 7 and Weisman Way Intersection Improvements (Project).

SUMMARY: Approval of this CSA will provide the professional CEI services necessary for the Project. The Affirmative Procurement Initiatives selected for this Contract on November 6, 2019 by the Goal Setting Committee are a 20% minimum mandatory Small Business Enterprise (SBE) participation and an SBE evaluation preference. BCCE agreed to 30% SBE participation for the Contract. They agreed to 31.35% SBE participation for this CSA. Their cumulative SBE participation to date for the Contract including this CSA is 30.40%. **This Project is included in the Five-Year Road Program. District 6 (YBH)**

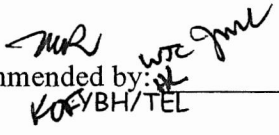
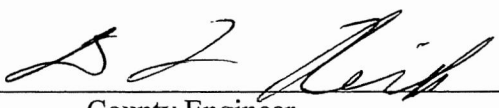
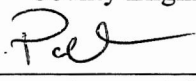
Background and Justification: On July 13, 2021, the Board of County Commissioners (BCC) approved the Contract with BCCE to provide professional CEI services throughout the County. The fee, as detailed in **Exhibit B** of the attached CSA, has been negotiated as just and reasonable compensation as follows:

Basic Services (Lump Sum)	\$101,811.53	(CEI Services)
Reimbursable Services (Not to Exceed)	\$ 0.00	
Optional Services (Not to Exceed)	\$ 0.00	
Total:	\$101,811.53	

After reviewing the attached CSA and finding it in proper order, the Engineering Department recommends BCC approval.

Attachments:

1. Location Map
2. CSA No. 3 with Exhibits A, B, C, D & Ebix Insurance Compliance (2)

Recommended by:  Kory BH/TEL	 County Engineer	11/12/2022 Date
Approved By:  Assistant County Administrator		11/15/22 Date

II. FISCAL IMPACT ANALYSIS

A. Five Year Summary of Fiscal Impact:

Fiscal Years	2023	2024	2025	2026	2027
Capital Expenditures	\$122,174	-0-	-0-	-0-	-0-
Operating Costs	-0-	-0-	-0-	-0-	-0-
External Revenues	-0-	-0-	-0-	-0-	-0-
Program Income (County)	-0-	-0-	-0-	-0-	-0-
In-Kind Match (County)	-0-	-0-	-0-	-0-	-0-
NET FISCAL IMPACT	\$122,174	-0-	-0-	-0-	-0-
# ADDITIONAL FTE POSITIONS (Cumulative)	-0-	-0-	-0-	-0-	-0-

Is Item Included in Current Budget?

Yes ☒ No ☐

Does this item include the use of federal funds?

Yes ☐ No ☒

Budget Account No:

Fund 3503 Dept 361 Unit 1884 Object 6505

Consultant Service Authorization (CSA) No. 3

• Basic Services	\$101,811.53
• Reimbursable	\$ 0.00
• Optional Services	\$ 0.00
Total Consultant Service Authorization (CSA) No. 3	\$101,811.53

Estimated Staff Costs

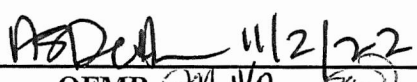
• Roadway Production	\$20,362.31
Total Staff Costs	\$20,362.31


Fiscal Impact \$122,173.84

C. Departmental Fiscal Review:

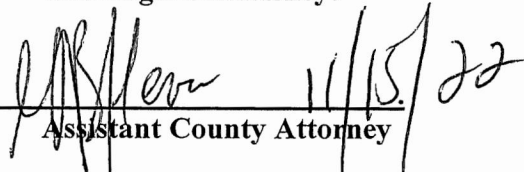
III. REVIEW COMMENTS

A. OFMB Fiscal and/or Contract Dev. and Control Comments:


 OFMB 11/2/22
 11-2-22


 Contract Dev. and Control 11/8/22

B. Approved as to Form and Legal Sufficiency:


 Assistant County Attorney 11/15/22

C. Other Department Review:

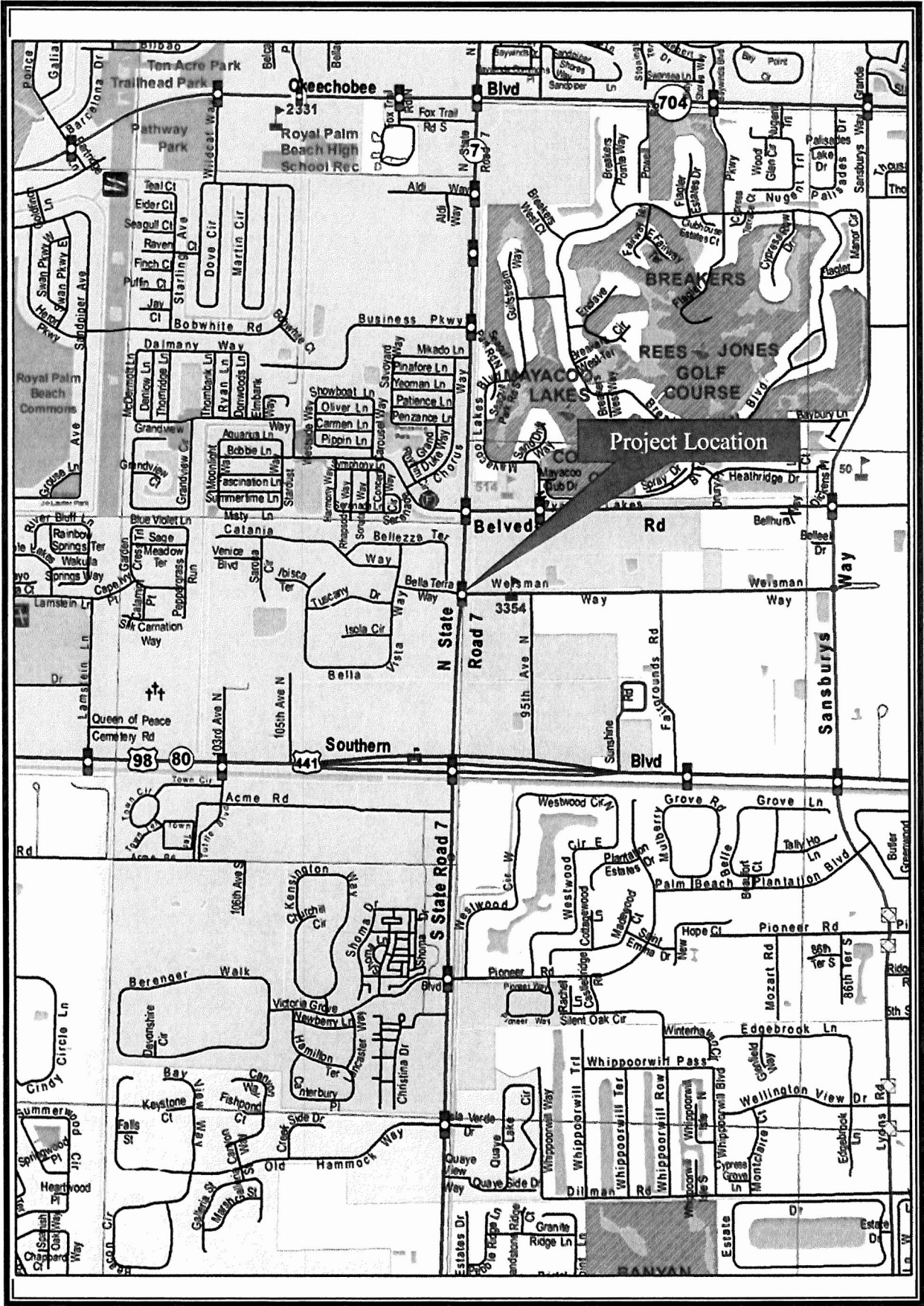
 Department Director

This summary is not to be used as a basis for payment.

PROJECT LOCATION

State Road 7 and Weisman Way Intersection Improvements

Palm Beach County Project #2017106



LOCATION MAP

CONSULTANT SERVICE AUTHORIZATION NO. 3
UNDER THE CONSTRUCTION ENGINEERING INSPECTION ANNUAL SERVICES
CONTRACT

Project Name: **State Road 7 and Weisman Way Intersection Improvements**

Project No: **2017106**

Commission District No.: **6**

SBE Participation for this authorization is **31.35%**

SBE Participation to date for this CSA is **31.35%**

SBE Commitment is **30%**

This authorization is under the EBO Ordinance.

PALM BEACH COUNTY

BOARD OF COUNTY COMMISSIONERS

Account No.: 3503-361-1884-6505

Consultant Service Authorization No. 3 (CSA) to the Construction Engineering Inspection (CEI) Annual Services Contract dated July 13, 2021, (R2021-0883) (CONTRACT), between the COUNTY and the CONSULTANT identified herein is for the services described in **EXHIBIT A** and **EXHIBIT B** for this CSA.

1. CONSULTANT: BCC Engineering, LLC
2. Address: 6401 SW 87th Avenue, Suite 200, Miami, Florida, 33173.
3. CONSULTANT shall begin work promptly on the requested Services, per the schedule attached as part of **EXHIBIT A**.
4. Scope of Services to be provided by CONSULTANT: Provide professional engineering services to Palm Beach County for the State Road 7 and Weisman Way Intersection Improvements project. Provide CEI services in accordance with the attached **EXHIBIT A** dated August 9, 2022.
5. The compensation to be paid CONSULTANT for providing the requested services as detailed in **EXHIBIT B** shall be:

<input checked="" type="checkbox"/> Basic Services in a lump sum fee of	\$101,811.53
<input type="checkbox"/> Reimbursable Expenses capped at	\$ 0.00
<input type="checkbox"/> Optional Services capped at	<u>\$ 0.00</u>
Totaling	\$101,811.53

☒ OEBO Schedules 1 & 2 **EXHIBIT C**

☒ CSA History **EXHIBIT D**

6. All terms of the CONTRACT shall apply to this CSA.

CONSULTANT SERVICE AUTHORIZATION NO. 3
UNDER THE CONSTRUCTION ENGINEERING INSPECTION ANNUAL SERVICES
CONTRACT

IN WITNESS WHEREOF, this CSA is accepted as of the date signed by the COUNTY below, subject to the terms and conditions of the aforementioned CONTRACT.

CONSULTANT: **BCC Engineering, LLC**
Federal ID: 65-0540100

Approved as to Terms and Conditions

Signed: _____

Typed Name: Eugenio Ochoa, P.E.

Title: Vice President

Date: 10/18/22

By: _____

Typed Name: Morton L. Rose, P.E.

Title: Division Director

(Corporate Seal)

ATTEST WITNESS:

Signed: _____

Typed Name: VANESSA ARANGO

Title: EXECUTIVE ASSISTANT

Date: 10/18/22

CONSULTANT SERVICE AUTHORIZATION NO. 3
UNDER THE CONSTRUCTION ENGINEERING INSPECTION ANNUAL SERVICES
CONTRACT

{SIGNATURE PAGES CONTINUED}

COUNTY: **Palm Beach County**, a Political
Subdivision of the State of Florida, by and
through its Board of County Commissioners

Signed: _____

Typed Name: _____

Title: Mayor

Date: _____

ATTEST:

Joseph Abruzzo

Clerk of the Circuit Court & Comptroller

By: _____

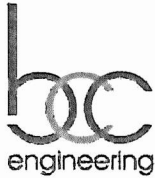
Deputy Clerk

Approved as to Form and Legal Sufficiency

By: _____

Typed Name: Yelizaveta B. Herman

Title: Assistant County Attorney



June 2, 2022 (Revised August 9, 2022)

Mostaque Khan, P.E.
Roadway Production Division
Palm Beach County Engineering & Public Works Dept.
2300 N Jog Road
West Palm Beach, FL 33411

Project Name: State Road 7 and Weisman Way Intersection Improvements

Subject: Proposal for Construction Engineering and Inspection (CEI) Services PBC CEI Annual Services

BCC Engineering, LLC is pleased to submit this proposal to provide Construction Engineering and Inspection (CEI) Services for the PBC CEI Annual Services - State Road 7 and Weisman Way Intersection Improvements

We understand services will be performed for:

CEI Contract No: 2021052 PBC CEI Annual Services

Project Name: State Road 7 and Weisman Way Intersection Improvements

Project ID No: 2017106

We will perform the CEI Services as requested by providing the necessary personnel for completion. Please see Exhibit B page 1 and 2 for details of manhours and rates. The total cost for our CEI Services is \$57,317.53.

We appreciate the opportunity to submit this unit price proposal and look forward to working with you on this project. If you have any questions regarding this cost estimate, please contact us at (305) 670.2350.

Sincerely,

A handwritten signature in black ink, appearing to read 'Eugenio Ochoa'.

Eugenio Ochoa, P.E.
Vice President

Eugenio Ochoa, P.E.

Digitally signed by Eugenio Ochoa, P.E.
Date: 2022.08.09 11:33:47 -04'00'

OK to proceed
M.K./8-15-22
WSC 8/16/22

FEE PROPOSAL AND SCOPE OF SERVICES FOR CONSTRUCTION ENGINEERING INSPECTION (CEI) ANNUAL SERVICES CONTRACT PROJECT: STATE ROAD 7 AND WEISMAN WAY INTERSECTION IMPROVEMENTS

P.B.C. PROJECT #2017106

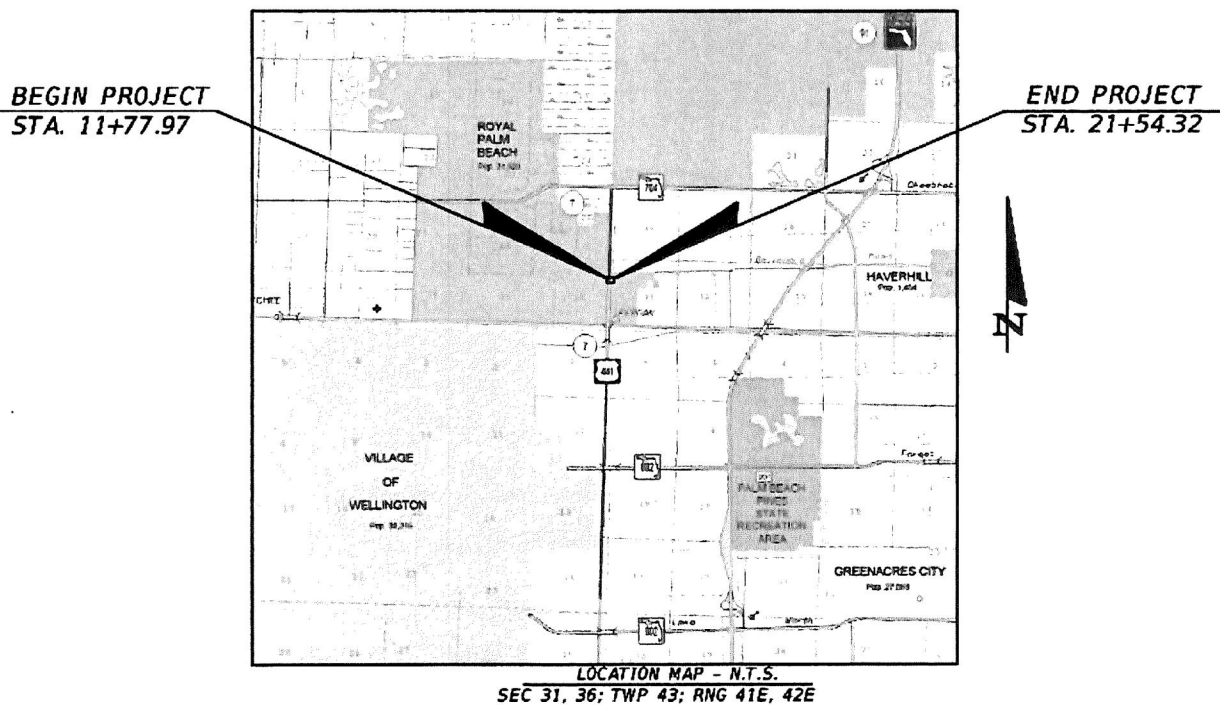
FDOT PERMIT No.: 2020-C-496-00014-93210

F.M. No.: 440456-54-01

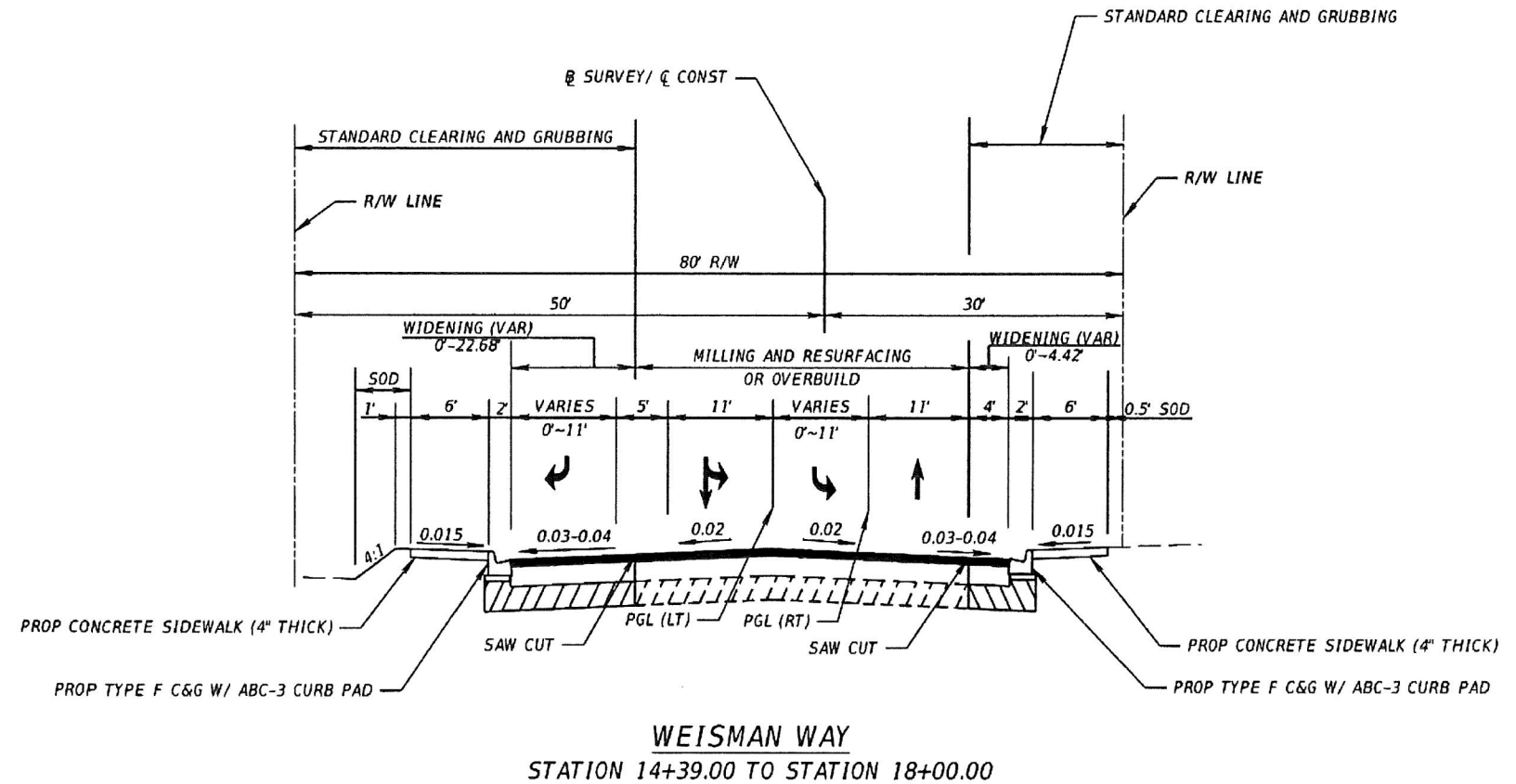
Revised 8/09/2022

Client: Palm Beach County

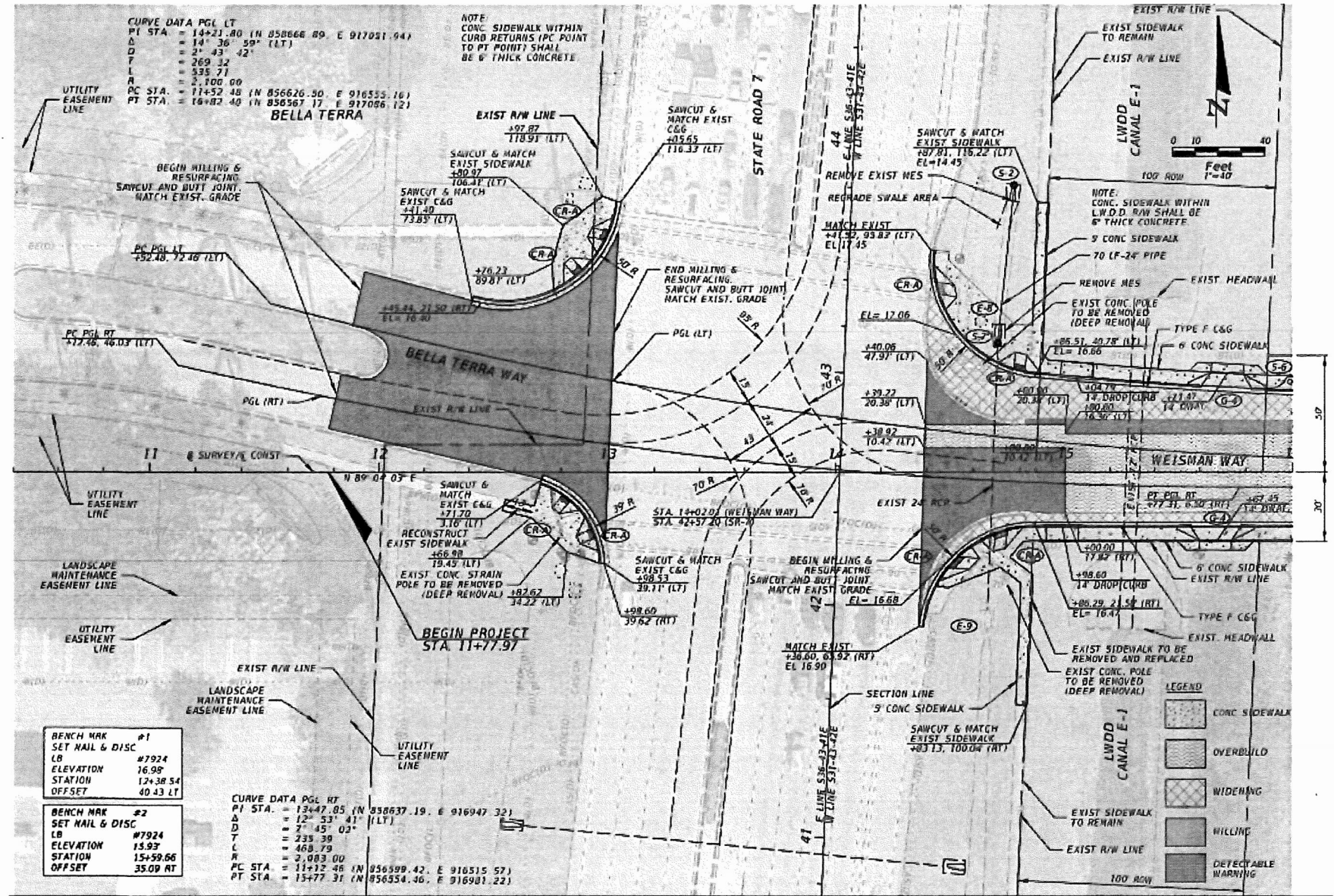
Location: The intersection of State Road 7 and Weisman Way in the Village of Royal Palm Beach, Florida



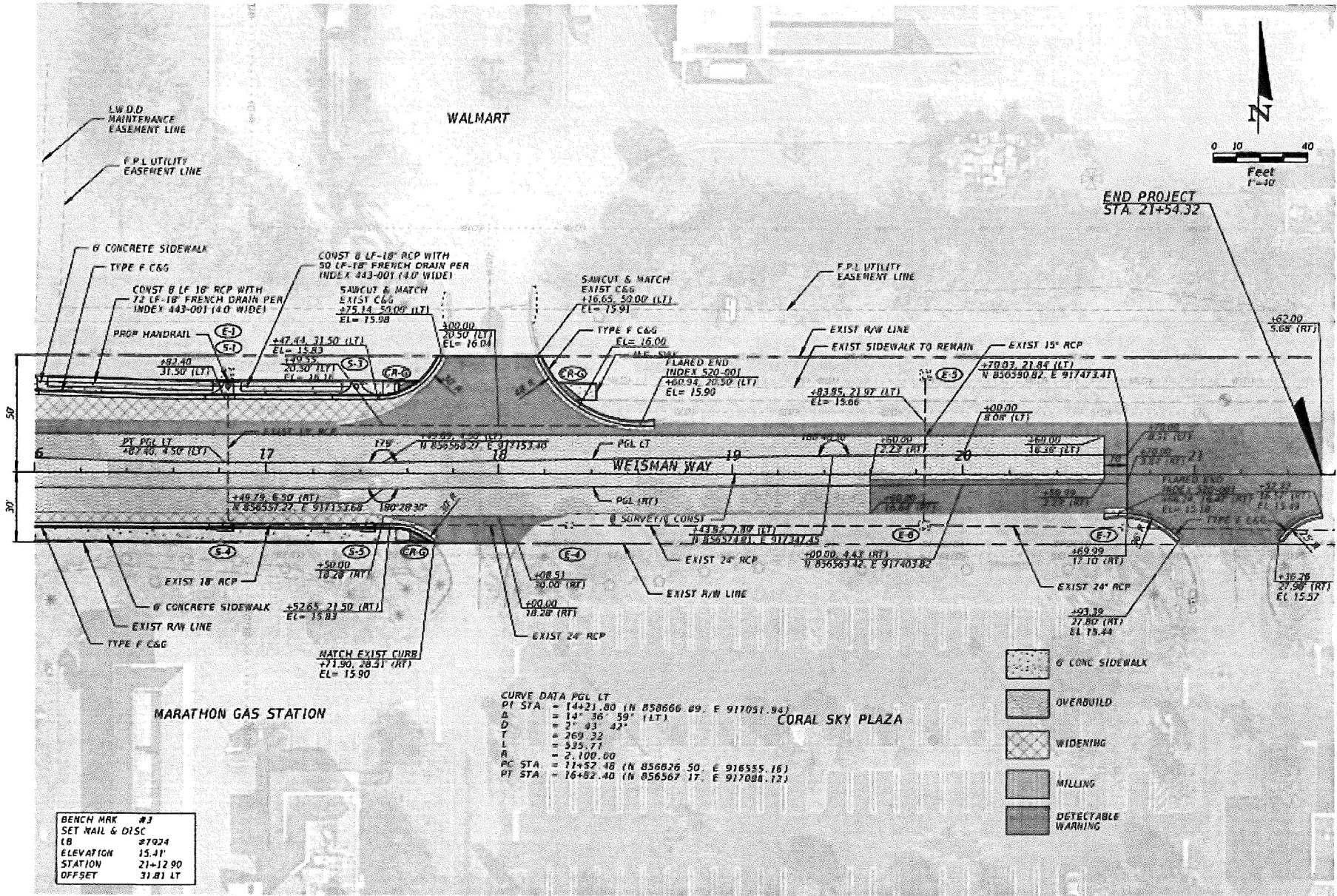
Understanding of Scope: BCC Engineering, LLC (BCC Engineering) understands the scope that Palm Beach County seeks to implement at the intersection of State Road 7 and Weisman Way. The project involves the milling and resurfacing of approximately 976 linear feet of Weisman Way west of US 441, along with portions of overbuild. The typical section between the Walmart Driveway and US 441 will be widened approximately 22.5 feet on the north side of Weisman Way, and approximately 4.5 feet on the south side of Weisman Way. Accompanying these features, will be the installation of sidewalk, curb and gutter, French drain, curb inlets, and 18" and 24" pipe culverts, street lighting, signalization, pavement markings, etc.



Typical Section for Palm Beach County Project #2017106 – State Road 7 and Weisman Way



Limits of work for Palm Beach County Project #2017106 – State Road 7 and Weisman Way



Limits of work for Palm Beach County Project #2017106 – State Road 7 and Weisman Way

In fulfillment of its Contract with Palm Beach County, BCC Engineering fully intends to perform the following functions which are essential to the successful outcome of this project:

Contractor Monitoring

We will monitor all work pursued by the Contractor and assure that the Contractor is monitoring all Stormwater pollution prevention measures associated with the project in addition to preparing all necessary reports. We will review and monitor compliance with drawings, contract documents, and all applicable specifications.

Verification Laboratory Material Testing and Sampling Services

Typical sampling and testing for soils, concrete and asphalt by our subconsultant's testing laboratory, Radise International, L.C. (Radise), will be performed at a frequency either indicated in the Contract, or otherwise directed by Palm Beach County Engineering. The Schedule of Testing Services and Fee are attached to Exhibit B of this Scope.

Problem Resolution

We strive to eliminate problems and issues before affecting the progress of the project. We achieve this by thoroughly understanding the plans, the intent of the plans, and the restraints of the governing documents. Upon discovery of any potential issues, we will analyze the impacts and risk exposure to Palm Beach County, along with any proposals submitted by the Contractor for the resolution of the issue, where applicable. We will prepare and submit recommendations to the County's Project Manager and expedite the necessary paperwork.

Payment Review

We will produce the necessary reports; verify quantity calculations, and field measure for payment purposes as required. We will ensure that all payment applications are certified prior to forwarding to the County for review.

Vehicular and Pedestrian Maintenance of Traffic

The plans for this project contain specific details and instruction on how to contend with vehicular and pedestrian traffic, as well as school zone restrictions, while pursuing the work under this Contract. These details must be utilized with Standard Index Drawings for successful execution. We will review the work zone traffic control plan implementation and inspection of maintenance of traffic schemes and devices in work zones to assure they are in accordance with the County's requirements. We will also ensure that the Contractor provides a qualified Worksite Traffic Supervisor as required.

Project Daily Reports

We will maintain a detailed electronic record and hard copy diary, which accurately depicts the Contractor's operations; quantities, testing data, and significant events that affect the work. We will submit daily construction reports to the County's Project Manager on a weekly basis.

Project Meetings

We will initiate our administration of the Contract with a pre-construction meeting to be held within 30 days from the issuance of the NTP. We will also administer bi-weekly project meetings with appropriate team members (the Project Administrator, County PM, Contractor PM, and Field Inspector, at a minimum) in attendance, prepare and distribute meeting minutes to attendees, note changes and /or corrections and ensure all responsible parties approve minutes at subsequent meetings.

Record Drawing Review

As-builts drawings are maintained for the purposes of reflecting any differences between what was intended to be constructed, and what was actually constructed. Throughout the course of the project, we will review as-recorded drawings (if maintained by the Contractor) to verify the Contract Drawings are noted to reflect actual construction and ensure our complete agreement with the as-builts; review monthly status of as-recorded drawings and verify for monthly pay applications; notify the Contractor in a timely fashion of deficiencies noted; provide follow up to verify Contractor maintains as-recorded drawing status up-to-date.

Maintain a Centralized Punch List of Items Requiring Correction

We will develop, maintain, and provide to the County and the Contractor, an on-going list of items requiring correction to encourage the timely correction of noted construction deficiencies, monitor construction throughout the project duration and identify deficient work and materials. This will be a centralized list, to avoid any confusion and missed items. We will provide the Contractor with an updated list at construction meetings and ensure all items on this list are corrected and/or signed off on, prior to project acceptance. The PBC Traffic Division will also inspect and provide a punch list which must also be addressed and signed off on, prior to final acceptance.

Notification of Accident Damage/Injury

We will document any accidents resulting in personal injury and/or property damage that may be attributed to construction activities. A report will be made completed and sent to the County's Project Manager, including any associated documentation such as a police report and photographs where appropriate.

Contract Interpretations and Modifications

We will receive, log, and coordinate reviews and responses to Contractor's Requests for Information (RFI's) following Palm Beach County approval and concurrence; responses to RFI's will be provided to the Contractor within seven (7) days; after PBC concurrence, prepare and issue response letters, field orders, or Change Proposal Requests as required.

Administration of Changed Work

We will receive from the Contractor all proposed changes to the work, and after analysis, inform the County's Project Manager with the appropriate recommendations, based on the reasoning behind the changes. We will track changes from initiation through completion; estimate cost and time impacts, and assist with negotiation of changes in contract time and cost; we will prepare change orders to incorporate

changes within Contract Documents; evaluate the Project on a continual basis to determine when changes are required; include justification documents with each Change Order; maintain current status logs of all Change Proposal Requests and Change Orders; review as-recorded (as-built) drawings to verify changes in work are reflected as applicable; review pay requests to verify Change Order items are broken down into component form and ensure that payment is not made until work is complete.

Construction Disputes and Claims

We will review and provide initial recommendations on disputes or claims in response to written notification of claims made by the Contractor, in accordance with the provisions of the Contract Documents, asserting the right to an adjustment in either Contract Price or Contract Time.

Contractor's Payment Applications to Palm Beach County

We will receive and review draft applications for payment prepared by the Contractor and note and attempt to reconcile discrepancies between Engineer's estimate of progress and Contractor's application; we will review draft application for payment in comparison to measured or estimated quantities and make notations of deficient work not recommended for payment until corrected. We will assess appropriate including deletion of payment for stored materials and/or equipment which do not have approved shop drawings and/or proper invoices in addition to a reduction of value for partially completed items claimed as complete; we will return a copy of the reviewed draft to the Contractor, meet with Contractor to reconcile discrepancies, review revised application for payment and, if acceptable, recommend payment and forward to the County Project Manager for processing.

Project Closeout – Substantial Completion and Inspection

Our inspections are ongoing; however, we will receive and review the Contractor's required substantial completion submittal and determine if the Project is ready for substantial completion inspection. We will develop substantial completion submittal checklist and perform the following activities: verify submittal of all required documents, review the Contractor's Record Drawings, perform drafting of Record Drawing revisions on reproducible set and transmit to the County's Project Manager for concurrence, review other substantial completion submittal documents for completeness and compliance with Contract provisions, and schedule substantial completion inspection after PBC concurrence. We will compile a centralized punch list and distribute to the parties conducting the walk-thru inspection, as required. We will review the progress of corrective action on punch list items, and when appropriate issue the Certificate of Substantial Completion with a list of stated qualifications (punch list). We will notify all project team members of the date of the Substantial Completion Inspection; review progress of corrective actions on punch list items, periodic updates and re-issuance of the punch list; identify tentative substantial completion and prepare and issue the Certificate of Substantial Completion with a list of stated qualifications (punch list).

Project Closeout - Final Completion, Inspection and Payment

We will receive and review the Contractor's required final completion submittal, develop final completion submittal checklist and verify the submittal of all required documents and review for completeness and

compliance with Contract provisions. We will notify the County Project Manager, Contractor, and other affected parties of date of final inspection and coordinate, attend and conduct the final inspection meeting and physical walk-through of the Project. We will compile, secure and transmit to the County warranties and similar submittals required by the Contract Documents for delivery to the County and deliver all spare parts, keys, manuals and record drawings to the County. We will provide Project Certification to permitting agencies based on Contractor provided Record Drawings, Tests, Product Certifications, Documents, as necessary to close out the Project. Collect all payment documents required, including all certifications from any suppliers or subcontractors of payment by the Prime Contractor, and forward to the Construction Project Manager for processing along with the Contractors Final Application and Certificate for Payment; finalize all project costs and determine the final adjusted amounts for construction; obtain Contractor's signature on any required Contractor's Certification or Affidavits; process and sign Final Application for Payment; prepare transmittal letter.

Proposed Staffing Discussion: Based on the Plans provided, the scope as previously mentioned involves the milling and resurfacing of approximately of Weisman Way west of US 441, along with portions of overbuild. The typical section between the Walmart Driveway and US 441 will be widened approximately both the north and south sides of Weisman Way. Drainage, street lighting, signalization and sidewalk will also be installed under the scope of this project. As the physical limits are somewhat limited, to capture this effort, we recommend utilizing 1 (one) senior inspector with the necessary background in roadway widening and asphalt placement to witness and document this work.

The parttime Senior Project Engineer, will be ultimately responsible for the quality of the inspection outcomes on the project, and along with the parttime Project Administrator, will be the persons in direct communication with Palm Beach County Engineering, Utilities, Traffic Management, and the Florida Department of Transportation. They will also serve as a first line of response to any public complaints or inquiries.

Our Resident Compliance Specialist/Contract Support Specialist (RCS/CSS) will ensure fulfillment of all administrative requirements which the Contractor is obligated to provide, as well as compile and process the monthly pay applications and change orders.

Estimated Duration: Whereas the overall duration of this project could be as much as 270 days, we foresee the field installation of the project features (drainage, roadway, signalization, etc.) taking perhaps 75 days of the overall 270 days. It is anticipated that the Contractor will procure in advance the lighting and signalization items prior to the start of construction. There may be some variability in the estimated duration of field operations quoted. This variability depends on weather, Contractor resources, and also the requirement to be able to conduct operations without severely impacting the egress into the adjacent shopping areas.

Proposed CEI Staffing

CEI Senior Project Engineer (BCC Engineering): Coordinate with PBC project manager any contract related concerns throughout the duration of the TWO. Review the contractor schedule to ensure conformance with contract documents, provide a written review of the schedule identifying significant omissions, improbable or unreasonable activity durations and errors in logic. Coordinate the staffing need to ensure construction activities are covered. Assist the project administrator with any technical issues that may arise during the construction duration.

CEI Project Administrator (HBC Engineering Company (HBC)): HBC's scope includes - Coordinate the Construction Contract administration activities of all parties other than the Contractor involved in completing the construction project. Services shall include maintaining the required level of surveillance of Contractor activities, interpreting plans, specifications, and special provisions for the Construction Contract. Maintain complete, accurate records of all activities and events relating to the project and properly document all project changes. Verify the schedule conforms with the construction phasing and MOT sequences, including all contract modifications. Analyze problems that arise on a project and proposals submitted by the Contractor; work to resolve such issues and process the necessary paperwork. Verify that the Contractor is conducting inspections, preparing reports, and monitoring all storm water pollution prevention measures associated with the project. Produce reports, verify quantity calculations, and field measure for payment purposes as needed to prevent delays in Contractor operations and to facilitate prompt processing of such information in order for the County to make timely payment to the Contractor. Conduct weekly/bi-weekly progress meeting and distribute minutes to all parties involved.

CEI Contract Support Specialist (CSS) (BCC Engineering): Responsible for the daily compilation of quantities as-installed for the processing of monthly Contractor application for payment for Contract work completed. Responsible for gathering of the documents necessary for the processing of Change Orders. Conduct and submit labor interviews for conformance with wage rates and DBE monitoring reports.

CEI Senior Roadway Inspector (BCC Engineering): Monitor Contractor activities, interpreting plans, specifications, and special provisions for the Construction Contract. Maintain complete, accurate field records of all activities and events relating to the project and properly document all project changes. Prepare daily work report (DWR) that include all activities and crews working on the project. Take photographic documentation of pre-construction state and of noteworthy incidents or events during construction. These photographs will be filed and maintained on the Consultant's computer using a digital photo management system. Photographs will be taken the day prior to the start of construction and continue as needed throughout the project. Coordinate along with the Project Administrator and the contractor any work affecting adjacent property owners in advance of work starting. The following activities will be inspected, witnessed, and documented per the FY21/22 Statewide Assurance/Quality Control Guidelists and Critical Requirements:

MOT

- The CEI staff is aware of and enforcing the requirements for MOT utilizing the 2021/2022 FDOT Standard Plans (102-600 series) and MUTCD.
- The CEI is aware that the Contractor will be required to submit a written plan which details each activity involved in the lane closure. The plan shall include Back-up Plans for activities critical to re-opening the lane to traffic. MOT plans and any modification of the Maintenance of Traffic, requires approval of the Palm Beach County Traffic Division.
- The CEI staff is aware of and enforcing the requirement for the Worksite Traffic Supervisor (WTS) is to perform an inspection during the opening of the work zone and for each subsequent MOT Phase.
- The CEI staff is aware of and enforcing the requirement to have the Contractor to provide residential and business properties safe, stable, and reasonable access for vehicles and pedestrians (including sidewalks).
- The CEI staff is aware of and enforcing the requirement to have the Contractor stay within the limits of the Right of Way and will restore to its original condition or better upon project completion.

Clearing and Grubbing

- The CEI staff is aware of and enforcing the requirement that the Contractor completely removes any stumps/roots within 12 inches of the surface in any areas where excavation is to be performed.
- The CEI staff will ensure trimming for sign sight distance and tree removal is enforced per the Contract Documents.

Environmental Controls

- CEI staff is aware of and enforcing the requirements that no construction activities may begin until the Erosion and Sediment Control Plan has been approved and implemented.

Earthwork

- CEI will enforce the requirement that all required density test results are documented.
- CEI will ensure that all sampling and testing requirements are met.
- CEI will ensure that all locates are performed prior to excavation and assist the Contractor with any components that may conflict with a utility.
- CEI will ensure that all conduits are installed at 36" below grade and have warning tape buried 24" below grade per the Contract Documents.

Concrete Pavement

- CEI will ensure that all forms are set to line and grade per FDOT Standard Specification 350-5 and meet ADA requirements.
- CEI will ensure forms are not removed for at least 12 hours after placement and after removing the forms, immediately apply curing compound to the sides of the slab per Spec 350-12.3.
- CEI will document concrete delivery ticket information ensure approved mix design is being used.

- CEI will ensure water is not added at the jobsite prior to slump testing. Water may be added after slump testing if the test is within the tolerance slump range. (Spec. 346-7)
- CEI will confirm W/C ratio is computed according to FM 5-501. (Spec 346-5)

Traffic/ITS Items

- CEI will ensure that the Contractor notifies Palm Beach County Traffic Operations prior to starting the work and to provide proper notice for final inspections.
- CEI will ensure all conduits are sealed with a duct sealant.
- CEI is aware that the Contractor is required to perform local field operational testing as per the Contract Documents.
- CEI is aware of and enforcing the requirements for Conduit and Interconnect Cable as per Spec Sections 630 and 632.
- CEI will ensure Section 635 requirements are met for the installation of the Pullboxes.
- CEI will ensure Section 653 and 665 requirements are met for installation of the Pedestrian Signals.

Pavement Markings

- The CEI staff is aware of and enforcing the requirements for the refurbished and proposed striping to be installed per Specification Section 711.

Project Schedule

- As discussed on Sheet 9 of 11 in this scope, the duration of this project is estimated to be approximately 270 days of which 75 days scheduled for construction. Should the tentative start date for this project be early 2023, this would equate to an estimated completion date of min-September 2023.

Schedule of Fees – Project #2017106

State Road 7 and Weisman Way Intersection Improvements

Name of Project: State Road 7 and Weisman Way Intersection Improvements
PBC Project Number: 2017106
Consultant Name: BCC Engineering, LLC
Consultant Number:
Date: 8/9/2022

Task Description	Total Staff Hours	Staff Categories			Staff Hours By Activity	Salary Cost By Activity	Average Rate Per Task
		CEI Senior Project Engineer	CEI Contract Support Specialist	CEI Senior Roadway Inspector			
		\$60.10 ✓	\$28.50 ✓	\$34.03 ✓			
BASIC SERVICES							
1 1st Month of Construction	0.0 ✓	0.0	0.0	0.0	0.0 ✓	\$0.00 ✓	\$ -
2 2nd Month of Construction	0.0 ✓	0.0	0.0	0.0	0.0 ✓	\$0.00 ✓	\$ -
3 3rd Month of Construction	0.0 ✓	0.0	0.0	0.0	0.0 ✓	\$0.00 ✓	\$ -
4 4th Month of Construction	1.0 ✓	1.0	0.0	0.0	1.0 ✓	\$60.10 ✓	\$ 60.10 ✓
5 5th Month of Construction	3.0 ✓	1.0	0.0	2.0	3.0 ✓	\$128.16 ✓	\$ 42.72 ✓
6 6th Month of Construction	4.0 ✓	1.0	0.0	3.0	4.0 ✓	\$162.19 ✓	\$ 40.55 ✓
7 7th Month of Construction	198.0 ✓	8.0	30.0	160.0	198.0 ✓	\$6,780.60 ✓	\$ 34.25 ✓
8 8th Month of Construction	198.0 ✓	8.0	30.0	160.0	198.0 ✓	\$6,780.60 ✓	\$ 34.25 ✓
9 9th Month of Construction	198.0 ✓	8.0	30.0	160.0	198.0 ✓	\$6,780.60 ✓	\$ 34.25 ✓
Total Staff Hours (Basic Services)	602.0 ✓	27.0 ✓	90.0 ✓	485.0 ✓	602.0 ✓		
Total Staff Cost (Basic Services)		\$1,622.70 ✓	\$2,565.00 ✓	\$16,504.55 ✓		\$20,692.25 ✓	\$ 34.37 ✓

EBO SBE Calculation for this Fee Summary	SBE \$	Non-SBE \$
Prime		\$57,317.53 ✓
HBC Engineering Company	\$31,926.96 ✓	
Radise International, L.C.		\$12,567.04 ✓
Totals	\$ 31,926.96 ✓	\$ 69,884.57 ✓

SBE % Achieved 31.35% ✓
SBE % Committed 30.00%

Basic Services:	
Salary Related Costs:	\$20,692.25
Contract Multiplier	2.77 ✓
Subtotal Basic Services (Prime Firm):	\$57,317.53 ✓
Basic Services (HBC Engineering Company)	
Providing a CEI Project Administrator	\$31,926.96 ✓
Basic Services (Radise International, L.C.)	\$12,567.04 ✓
Materials VT Testing Services	
Subtotal Basic Services (Subconsultants)	\$44,494.00 ✓
Basic Services Total:	\$101,811.53 ✓

Grand Total Estimated Fees: \$101,811.53 ✓

270 Days - 485 hours (8 Hour Days)

Hours:			
Positions	Project Hours	Intended % Utilization	Total Hours
CEI Senior Project Engineer	485	5.6%	27 Hrs
CEI Contract Support Specialist	485	18.6%	90 Hrs
CEI Senior Roadway Inspector	485	100.0%	485 Hrs
Rates:			
Positions	Rate (Approved)	Hours	Costs
CEI Senior Project Engineer	\$60.10 ✓	27	\$1,622.70 ✓
CEI Contract Support Specialist	\$28.50 ✓	90	\$2,565.00 ✓
CEI Senior Roadway Inspector	\$34.03 ✓	485	\$16,504.55 ✓
		Total Costs	\$20,692.25 ✓
		Multiplier	2.77 ✓
		Subtotal:	\$57,317.53 ✓
Total Prime Costs:			\$57,317.53 ✓



June 1, 2022 (Revised June 8, 2022)
(Revised July 26, 2022)

Geoffrey Parker, Project Manager
BCC Engineering, LLC.
700 N. Olive Ave., Suite 1
West Palm Beach, FL 33401
(561) 655-0655/gparker@bcceng.com

**SUBJECT: Proposal for Construction Engineering and Inspection (CEI) Services
PBC Annual Services with BCC Engineering - State Road 7 and Weisman
Way Intersection Improvements
PBC Project ID No. 2017106**

Dear Mr. Parker,

HBC Engineering Company (HBC) is pleased to submit this proposal to provide Construction Engineering and Inspection (CEI) Services for the PBC CEI Annual Services – State Road 7 and Weisman Way Intersection Improvements.

We understand services will be performed for:

**CEI Contract - PBC Annual Services with BCC Engineering
Project: State Road 7 and Weisman Way Intersection Improvements
PBC Project ID No: 2017106**

We will perform the CEI Services as requested by providing a CEI Project Administrator with an estimate of 216 man-hours at $\$49.27 \times 3 = \$147.81/\text{hr.}$ for a total of \$31,926.96. ✓

We appreciate the opportunity to submit this unit price proposal and look forward to working with you on this project. If you have any questions regarding this cost estimate, please contact us at (305) 232-7932.

Sincerely,

HBC Engineering Company

A handwritten signature in black ink, appearing to read "Adebayo Coker", is written over a horizontal line.

Adebayo Coker, P.E.

President

Attachment: Schedule of Fees - Project #2017106

Schedule of Fees – Project #2017106

State Road 7 (US 441) and Weisman Way – Intersection Improvement

Name of Project: State Road 7 and Weisman Way Intersection Improvements			Consultant Name: HBC Engineering Company		
PBC Project Number: 2017106			Consultant Number:		
			Date: 7/25/2022		
Task Description	Total Staff Hours	Staff Categories	Staff Hours By Activity	Salary Cost By Activity	Average Rate Per Task
		CEI Project Administrator \$49.27 ✓			
BASIC SERVICES					
1 1st Month of Construction	1.0	1.0	1.0 ✓	\$49.27 ✓	49.27 ✓
2 2nd Month of Construction	1.0	1.0	1.0 ✓	\$49.27 ✓	49.27 ✓
3 3rd Month of Construction	1.0	1.0	1.0 ✓	\$49.27 ✓	49.27 ✓
4 4th Month of Construction	1.0	1.0	1.0 ✓	\$49.27 ✓	49.27 ✓
5 5th Month of Construction	1.0	1.0	1.0 ✓	\$49.27 ✓	49.27 ✓
6 6th Month of Construction	1.0	1.0	1.0 ✓	\$49.27 ✓	49.27 ✓
7 7th Month of Construction	70.0	70.0	70.0 ✓	\$3,448.90 ✓	49.27 ✓
8 8th Month of Construction	70.0	70.0	70.0 ✓	\$3,448.90 ✓	49.27 ✓
9 9th Month of Construction	70.0	70.0	70.0 ✓	\$3,448.90 ✓	49.27 ✓
Total Staff Hours (Basic Services)	216.0 ✓	216.0 ✓	216.0 ✓	\$10,642.32 ✓	49.27 ✓
Total Staff Cost (Basic Services)		\$10,642.32 ✓			
				Salary Related Costs:	\$10,642.32 ✓
					3.00 ✓
				Subtotal Basic Services (HBC Engineering Company):	\$31,926.96 ✓
				Basic Services Total:	\$31,926.96 ✓



May 12, 2022
Revised July 26, 2022
Revised August 3, 2022

BCC Engineering
Attn.: Mr. Geoff Parker, P.E. - SR Project Engineer
6401 SW 87th Avenue, Suite 200
Miami, FL 33173
gparker@bcceng.com
305-670-2350 / 954-325-6880 (Cell)

Subject: **Proposal for Construction Materials Testing and Inspection Services
CEI and VT Proposal for SR 7 & Weisman Way Intersection Improves Project
PBC Project ID No: 2017106, Palm Beach County, Florida**

Dear Mr. Parker,

RADISE International, L.C. (RADISE) is pleased to submit this proposal to provide Construction Materials Testing and Inspection Services in connection with the PBC Annual CEI Services - SR 7 & Weisman Way Intersection Improves Project, PBC Project ID No: 2017106, Palm Beach County, Florida.


We understand that the project will include:

CEI Contract: PBC Annual Services with BCC Engineering
Project: SR 7 & Weisman Way Intersection Improvement Project
PBC Project ID No: 2017106
RADISE Position: CEI Inspections and Materials VT Testing Services
RADISE Scope Fee Rate Estimate: Estimate \$12,567.04 (breakdown attached) of VT Field and Laboratory Support Services.

We will perform the CEI QA/QC and VT Materials Testing Services as requested on a unit price basis. Please see the above and attached cost estimate, based on our approved Palm Beach County Contract Rates.

We appreciate the opportunity to submit this unit price proposal and look forward to working with you on this project. If you have any questions regarding the unit prices or would like us to quote the project based on known quantities, please contact us at 561-841-0103.

Sincerely,
RADISE International, L.C.
Infrastructure Engineers • Software Developers


Newton M. Brooks
Construction Services Manager


Gregory J. Stelmack, P.E.
Vice President

Attachments: Appendix A

4152 West Blue Heron Blvd, Suite 1114, Riviera Beach, FL 33404 Ph: 561.841.0103/Fax: 561.841.0104 www.RADISE.net
With offices in Miami-Dade, Broward, Palm Beach and Orange Counties

Verification Laboratory Material Testing and Sampling Services



ATTACHMENT A

RADISE COST ESTIMATE
CEI and MATERIALS TESTING SERVICES - PBC
CEI SUPPORT FOR SR 7 & WEISMAN WAY INTERSECTION IMPROVEMENTS - BCC
PALM BEACH COUNTY, FLORIDA

5/12/2022 (Revised 08-03-22)

ITEM/DESCRIPTION	QUANTITY	UNITS	UNIT RATE	TOTAL
1.0 LABORATORY TESTING SERVICES				
1.1 Laboratory Testing Services - Soils				
1.1.1 Organic Content - AASHTO T-267	4	Test	\$ 55.00✓	\$ 220.00✓
1.1.2 Grain Size Determination: Full Grain Size (8 Sieves)	4	Test	\$ 90.00✓	\$ 360.00✓
1.1.3 Modified Proctor ASTM D1557 (Subgrade)	3	Test	\$ 115.00✓	\$ 345.00✓
1.1.4 Modified Proctor ASTM D1557 (Base Course)	1	Test	\$ 115.00✓	\$ 115.00✓
1.1.5 Limerock Bearing Ratio - Subgrade and Base	4	Test	\$ 315.00✓	\$ 1,260.00✓
1.2 Laboratory Testing Services - Concrete - (4 Cylinders per set @ 1 set every 50 CY)				\$ -
1.2.1 Concrete Compression Test - Sidewalks and Curbs - ASTM C39 (Est 8 Sets)	8	Sets	\$ 154.00✓	\$ 1,232.00✓
1.2.2 Additional Cylinders (1 per set)	8	Cylinder	\$ 19.00✓	\$ 152.00✓
1.2.3 Air Content Test (1 per set)	8	Each	\$ 22.00✓	\$ 176.00✓
Subtotal				\$ 3,860.00✓
2.0 FIELD TESTING SERVICES - EARTHWORK & CONCRETE				
2.1 Infrastructure Components - Density Test				
2.1.1 Density Tests - Compacted Subgrade	30	Test	\$ 31.20✓	\$ 936.00✓
2.1.2 Density Tests - Aggregate Base	25	Test	\$ 31.20✓	\$ 780.00✓
2.1.3 Engineering Technician - (Sampling, Sample Pick Up and Standby Time)	8	Hour	\$ 70.00✓	\$ 560.00✓
2.2 Infrastructure Components - Concrete Sampling				
2.2.1 ACI Level 1 Technician (Est. 2 hr./trip) - Concrete Sampling and Field Testing - Estimated 8 trips	16	Hour	\$ 70.00✓	\$ 1,120.00✓
Subtotal				\$ 3,396.00✓
3.0 FIELD INSPECTION AND TESTING SERVICES - ASPHALT				
3.1 On-site Paving Operation Inspection - Senior Eng Tech (Est. 4 hr./trip)	12	Hour	\$ 95.00✓	\$ 1,140.00✓
3.2 Densities (Nuclear - Back Scatter Method)	20	Test	\$ 31.20✓	\$ 624.00✓
3.3 Asphalt Cores	8	Each	\$ 75.00✓	\$ 600.00✓
3.4 Asphalt Density and Thickness	8	Each	\$ 42.00✓	\$ 336.00✓
3.5 Coring Maching plus Generator	1	Trip	\$ 400.00✓	\$ 400.00✓
3.6 2 Man Coring Crew - 1 Sr Tech and 1 Tech for 8 hours (\$95+\$70/hr)	8	Hour	\$ 165.00✓	\$ 1,320.00✓
Subtotal				\$ 4,420.00✓
4.0 PROJECT MANAGEMENT & ENGINEERING SUPPORT SERVICES				
4.1 Engineer, PE	8	Hour	\$ 111.38✓	\$ 891.04✓
Subtotal				\$ 891.04✓
LABORATORY AND FIELD TESTING SERVICES				\$12,567.04✓
5.0 NOTES/ASSUMPTIONS				
5.1	Project management includes engineering time for the coordination and supervision of soil and concrete testing also review and preparation of field and laboratory reports completed in accordance with Florida Statutes, Chapter 471			
5.2	A minimum of five (5) in-place density tests is required for each scheduled trip.			
5.3	One hour of the Engineering Technician's time is included in the cost per set of Concrete Cylinders. Standby time will be charged at \$70.00 per hour.			

OEBO SCHEDULE 1

EXHIBIT C - Page 1 of 3

SOLICITATION/PROJECT/BID NAME: State Road 7 and Weisman Way Intersection Improvements
 SOLICITATION OPENING/SUBMITTAL DATE: September 1, 2020

SOLICITATION/PROJECT/BID NO.: 2017106
 COUNTY DEPARTMENT: Engineering and Public Works

Section A PLEASE LIST THE DOLLAR AMOUNT OR PERCENTAGE OF WORK TO BE COMPLETED BY THE PRIME CONTRACTOR/CONSULTANT* ON THE PROJECT:

NAME OF PRIME RESPONDENT/BIDDER: BCC Engineering, LLC ADDRESS: 6401 SW 87Th Avenue, Suite 200, Miami, FL 33173

CONTACT PERSON: Eugenio Ochoa PHONE NO.: (605) 670-2350 E-MAIL: eochoa@bcceng.com

PRIME'S DOLLAR AMOUNT OR PERCENTAGE OF WORK: \$57,317.53 ✓
 *SMWBE Prime's must include their percentage or dollar amount in the Total Participation line under section B.

Non-SBE ☒ MBE ☐ WBE ☐ SBE ☐

Section B PLEASE LIST THE DOLLAR AMOUNT OR PERCENTAGE OF WORK TO BE COMPLETED BY ALL SUBCONTRACTORS/SUBCONSULTANTS ON THE PROJECT BELOW:

Subcontractor/Sub consultant Name	(Check all Applicable Categories)				DOLLAR AMOUNT OR PERCENTAGE OF WORK					
	Non-SBE	MBE Minority Business	WBE Women Business	SBE Small Business	Black	Hispanic	Women	Caucasian	Asian	Other
1. HBC Engineering Company	<input type="checkbox"/>	<input checked="" type="checkbox"/>	<input type="checkbox"/>	<input checked="" type="checkbox"/>	\$31,926.96 ✓					
2. Radise International, L.C.	<input checked="" type="checkbox"/>	<input type="checkbox"/>	<input type="checkbox"/>	<input type="checkbox"/>						\$12,567.04 ✓
3.	<input type="checkbox"/>	<input type="checkbox"/>	<input type="checkbox"/>	<input type="checkbox"/>						
4.	<input type="checkbox"/>	<input type="checkbox"/>	<input type="checkbox"/>	<input type="checkbox"/>						
5.	<input type="checkbox"/>	<input type="checkbox"/>	<input type="checkbox"/>	<input type="checkbox"/>						

(Please use additional sheets if necessary)

Total \$31,926.96 ✓ \$12,567.04 ✓

Total Bid/Offer Price \$ 101,811.53 ✓

Total Certified S/M/WBE Participation \$ 31,926.96 / 31.35% ✓

I hereby certify that the above information is accurate to the best of my knowledge: Eugenio Ochoa Vice President
 Name & Authorized Signature Title

- Note:
- The amount listed on this form for a Subcontractor/sub consultant must be supported by price or percentage listed on the properly executed Schedule 2 or attached signed proposal.
 - Only those firms certified by Palm Beach County at the time of solicitation opening or due date are eligible to meet the established OEBO Affirmative Procurement Initiative (API). Please check the applicable box and list the dollar amount or percentage under the appropriate demographic category.
 - Modification of this form is not permitted and will be rejected upon submittal.

A completed Schedule 2 is a binding document between the Prime Contractor/consultant and a Subcontractor/subconsultant (for any tier) and should be treated as such. The Schedule 2 shall contain bolded language indicating that by signing the Schedule 2, both parties recognize this Schedule as a binding document. All Subcontractors/subconsultants, including any tiered Subcontractors/subconsultants, must properly execute this document. Each properly executed Schedule 2 must be submitted with the bid/proposal.

SOLICITATION/PROJECT NUMBER: 2017106

SOLICITATION/PROJECT NAME: State Road 7 and Weisman Way Intersection Improvements

Prime Contractor: BCC Engineering, LLC

Subcontractor: HBC Engineering Company

(Check box(s) that apply)

☒ SBE ☐ WBE ☒ MBE ☐ M/WBE ☐ Non-S/M/WBE Date of Palm Beach County Certification (if applicable): 5/24/22-5/23/25

The undersigned affirms they are the following (select one from each column if applicable):

Column 1

Column 2

Column 3

☒ Male ☐ Female

☒ African-American/Black ☐ Asian American ☐ Caucasian American

☐ Supplier

☐ Hispanic American ☐ Native American

S/M/WBE PARTICIPATION – S/M/WBE Primes must document all work to be performed by their own work force on this form. Failure to submit a properly executed Schedule 2 for any S/M/WBE participation may result in that participation not being counted. Specify in detail, the scope of work to be performed or items supplied with the dollar amount and/or percentage for each work item. S/M/WBE credit will only be given for the areas in which the S/M/WBE is certified. A detailed proposal may be attached to a properly executed Schedule 2.

Line Item	Item Description	Unit Price	Quantity/ Units	Contingencies/ Allowances	Total Price/Percentage
10.1	Roadway Construction Engineering Inspection	\$49.27	216.0	x3.00 (Multiplier)	\$31,926.96 ✓

The undersigned Subcontractor/subconsultant is prepared to self-perform the above-described work in conjunction with the aforementioned project at the following total price or percentage: \$31,926.96 ✓

If the undersigned intends to subcontract any portion of this work to another Subcontractor/subconsultant, please list the business name and the amount below accompanied by a separate properly executed Schedule 2.

Name of 2nd/3rd tier Subcontractor/subconsultant

Price or Percentage: _____

BCC Engineering, LLC

Print Name of Prime

By: _____

Authorized Signature

Eugenio Ochoa

Print Name

Vice President

Title

Date: 8/12/2022

HBC Engineering Company

Print Name of Subcontractor/subconsultant

By: _____

Authorized Signature

Adebayo Coker

Print Name

President

Title

Date: 8/12/2022

A completed Schedule 2 is a binding document between the Prime Contractor/consultant and a Subcontractor/subconsultant (for any tier) and should be treated as such. The Schedule 2 shall contain bolded language indicating that by signing the Schedule 2, both parties recognize this Schedule as a binding document. All Subcontractors/subconsultants, including any tiered Subcontractors/subconsultants, must properly execute this document. Each properly executed Schedule 2 must be submitted with the bid/proposal.

SOLICITATION/PROJECT NUMBER: 2017106

SOLICITATION/PROJECT NAME: State Road 7 and Weisman Way Intersection Improvements

Prime Contractor: BCC Engineering, LLC

Subcontractor: RADISE International, L.C.

(Check box(s) that apply)

☐ SBE ☐ WBE ☐ MBE ☐ M/WBE ☒ Non-S/M/WBE Date of Palm Beach County Certification (if applicable):

The undersigned affirms they are the following (select one from each column if applicable):

Column 1

Column 2

Column 3

☒ Male ☐ Female

☐ African-American/Black ☒ Asian American ☐ Caucasian American

☐ Supplier

☐ Hispanic American ☐ Native American

S/M/WBE PARTICIPATION – S/M/WBE Primes must document all work to be performed by their own work force on this form. Failure to submit a properly executed Schedule 2 for any S/M/WBE participation may result in that participation not being counted. Specify in detail, the scope of work to be performed or items supplied with the dollar amount and/or percentage for each work item. S/M/WBE credit will only be given for the areas in which the S/M/WBE is certified. A detailed proposal may be attached to a properly executed Schedule 2.

Line Item	Item Description	Unit Price	Quantity/ Units	Contingencies/ Allowances	Total Price/Percentage
10.2	Verification Laboratory Material Testing and Sampling Services	\$12,567.04	1		\$12,567.04

The undersigned Subcontractor/subconsultant is prepared to self-perform the above-described work in conjunction with the aforementioned project at the following total price or percentage: \$12,567.04

If the undersigned intends to subcontract any portion of this work to another Subcontractor/subconsultant, please list the business name and the amount below accompanied by a separate properly executed Schedule 2.

Name of 2nd/3rd tier Subcontractor/subconsultant

Price or Percentage:

BCC Engineering, LLC

Print Name of Prime

By:

Authorized Signature

Eugenio Ochoa

Print Name

Vice President

Title

Date:

8/12/2022

RADISE International, L.C.

Print Name of Subcontractor/subconsultant

By:

Authorized Signature

Achyut K. Allady

Print Name

President

Title

Date:

8/10/22

Revised 09/17/2019

CONSULTANT SERVICE AUTHORIZATION NO. 3 HISTORY

State Road 7 and Weisman Way Intersection Improvements					
Project# 2017106					
Authorization	Supplement	Date Approved	Total Amount	SBE Amount	SBE %
BCC	Original CSA	Pending	\$ 101,811.53	\$ 31,926.96	31.35%
Project Totals			\$ 101,811.53	\$ 31,926.96	31.35%

EXHIBIT D PAGE 1 OF 1

Search

Insured Name

BCC Engineering, LLC (DX0001602)

BCC Engineering, LLC (DX00001602)

Active Records Only

Advance Search

Insured Tasks

Admin Tools

View

Insured

Notes

History

Deficiencies

Coverages

Requirements

Queue a Call

Add

Help

Video Tutorials

Ebix Insurance Compliance

Welcome ssinanan

🔍

🔔 0

📄 303

📁 5

🗂

🔌

🏠 Home

📅 Insured Tasks

📄 View

👤 Insured

👤 Insured

Name:

BCC Engineering, LLC 👤

Account Number:

DX00001602

Address:

6401 SW 87th Avenue, Suite200, Miami, FL, 33173

Status:

Currently in Compliance.

Insured

Business Unit(s)

DBA Number

Print Insured Info

Print Compliance Report

Account Information

Account Number:

DX00001602

Risk Type:

Standard - Professional Services

Do Not Call:

Address Updated:

Address Information

Mailing Address

Physical Address

Insured:

BCC Engineering, LLC

Address 1:

6401 SW 87th Avenue, Suite200

Address 2:

City:

Miami

State:

FL

Zip:

33173

Country:

Contract Information

Contract Number:

Contract Start Date:

Contract End Date:

Contract Effective Date:

Contract Expiration Date:

Description of Services:

R2021-0883 Construction Engineering Inspection (CEI) Annual Services

Safety Form II:

No

Contact Information

Contact Name:

Geoffrey Parker

Misc:

Phone Number:

9543256880

Alt Phone Number:

Fax Number:

E-Mail Address:

gparker@bcceng.com

Approval Date:

Rush:

No

Contract on File:

No

Certificate Received:

Yes

Indemnification Agreement:

No

Tax Id:

This Account created by f26 on 09/14/2021.