

PALM BEACH COUNTY
BOARD OF COUNTY COMMISSIONERS
AGENDA ITEM SUMMARY

Meeting Date: December 20, 2022 [X] Consent [] Regular
[] Workshop [] Public Hearing
Department: Engineering & Public Works Department
Submitted By: Engineering & Public Works Department
Submitted For: Roadway Production Division

I. EXECUTIVE BRIEF

Motion and Title: Staff recommends motion to approve: Consultant Service Authorization (CSA) No. 2 to the Construction Engineering Inspection (CEI) Annual Services Contract (R2021-0883) dated July 13, 2021 (Contract) with BCC Engineering, LLC (BCCE) in the amount of \$603,820.81 for Lyons Road/Sansbury's Way Buffered Bike Lanes (Project).

SUMMARY: Approval of this CSA will provide the professional services necessary for CEI for this Project. The Project will widen Lyons Road/Sansbury's Way to add buffered bike lanes from Forest Hill Boulevard to Okeechobee Boulevard. The Affirmative Procurement Initiatives selected for this Contract on November 6, 2019 by the Goal Setting Committee are a 20% Small Business Enterprise (SBE) participation and an SBE evaluation preference. BCCE agreed to 30% SBE participation for the Contract and 30.17% SBE participation for this CSA. Their cumulative SBE participation to date for the Contract including this CSA is 30.27%. The construction contract for this Project (R2022-0914) was awarded for \$5,862,084.91 on September 13, 2022. This Project is included in the Five-Year Road Program and includes a Transportation Planning Agency Local Initiatives Program grant. Districts 2 & 6 (YBH)

Background and Justification: On July 13, 2021, the Board of County Commissioners (BCC) approved the Contract with BCCE to provide the professional CEI Services throughout the County. The fee, as detailed in Exhibit B of the attached CSA, has been negotiated as just and reasonable compensation as follows:

Table with 3 columns: Service Type, Amount, and Notes. Rows include Basic Services (Lump Sum) at \$603,820.81 (CEI Services), Reimbursable Services (Not to Exceed) at \$ 0.00, Optional Services (Not to Exceed) at \$ 0.00, and Total at \$603,820.81.

After reviewing the attached CSA and finding it in proper order, the Engineering Department recommends BCC approval.

Attachments:

- 1. Location Map
2. CSA No. 2 with Exhibits A, B, C, D & Ebix Insurance Compliance (2)

Recommended by: [Signature] County Engineer Date 12/17/2022
Approved By: [Signature] Assistant County Administrator Date 12/15/22

PROJECT LOCATION

LYONS ROAD / SANBURY'S WAY BUFFERED BIKE LANES
(FROM FOREST HILL BOULEVARD TO OKEECHOBEE BOULEVARD)
Palm Beach County Project #2019604



LOCATION MAP

CONSULTANT SERVICE AUTHORIZATION NO. 2
UNDER THE CONSTRUCTION ENGINEERING INSPECTION
ANNUAL SERVICES CONTRACT

Project Name: **Lyons Road / Sansbury's Way Buffered Bike Lanes**

Project No: **2019604**

Commission District No.: **2 & 6**

SBE Participation for this authorization is **30.17%**

SBE Participation to date for this CSA is **30.17%**

SBE Commitment is **30%**

This Authorization is under the EBO Ordinance.

PALM BEACH COUNTY

BOARD OF COUNTY COMMISSIONERS

Account No.: 3500-361-1908-6505

Consultant Service Authorization No. 2 to the Construction Engineering Inspection (CEI) Annual Services Contract dated July 13, 2021, (R2021-0883), (CONTRACT), between the COUNTY and the CONSULTANT identified herein is for the Services described in **EXHIBIT A** and **EXHIBIT B** for this Consultant Service Authorization.

1. CONSULTANT: BCC Engineering, LLC
2. Address: 6401 SW 87th Avenue, Suite 200, Miami, FL 33173
3. CONSULTANT shall begin work promptly on the requested Additional Services, per the project schedule attached as part of **EXHIBIT A**.
4. Description of Scope of Services to be provided by CONSULTANT: Provide professional CEI services to Palm Beach County for the Lyons Road / Sansbury's Way Buffered Bike Lanes project in accordance with the attached **EXHIBIT A** dated August 18, 2022.
5. The compensation to be paid CONSULTANT for providing the requested services as detailed in **EXHIBIT B** shall be:

[x] Basic Services in a lump sum fee of	<u>\$603,820.81</u>
Totaling	<u>\$603,820.81</u>
- [x] OEBO Schedules 1 & 2 **EXHIBIT C**
- [x] Consultant Service Authorization History **EXHIBIT D**
6. All terms of the CONTRACT, shall apply to this Consultant Service Authorization No. 2.

CONSULTANT SERVICE AUTHORIZATION NO. 2
UNDER THE CONSTRUCTION ENGINEERING INSPECTION
ANNUAL SERVICES CONTRACT

IN WITNESS WHEREOF, this Consultant Service Authorization is accepted as of the date signed by the County below, subject to the terms and conditions of the aforementioned CONTRACT.

CONSULTANT: **BCC Engineering, LLC**
Federal ID: **65-0540100**

Approved as to Terms and Conditions

Signed: _____

Typed Name: **Eugenio Ochoa**

Title: **Vice President**

Date: 11/18/22

By: *Kat O'Connell

for Typed Name: **Morton L. Rose, P.E.**

Title: **Division Director**

(Corporate Seal)

ATTEST WITNESS:

Signed: _____

Typed Name: **VANESSA ARANCO**

Title: **EXECUTIVE ASSISTANT**

Date: 11/18/22

CONSULTANT SERVICE AUTHORIZATION NO. 2
UNDER THE CONSTRUCTION ENGINEERING INSPECTION
ANNUAL SERVICES CONTRACT

{SIGNATURE PAGES CONTINUED}

COUNTY: **Palm Beach County**, a Political
Subdivision of the State of Florida, by and
through its Board of County Commissioners

Signed: _____

Typed Name: _____

Title: Mayor

Date: _____

ATTEST:

Joseph Abruzzo
Clerk of the Circuit Court & Comptroller

By: _____
Deputy Clerk

Approved as to Form and Legal Sufficiency

By: _____

Typed Name: Yelizaveta B. Herman

Title: Assistant County Attorney

Project Name: Lyons Road / Sansbury's Way Buffered Bike Lanes from Forest Hill Boulevard to Okeechobee Boulevard

scope & fee
M.F. / 8-22-22
WJC 8/22/22



May 2, 2022 (Revised August 18, 2022)

Mostaque Khan, P.E.
Roadway Production Division
Palm Beach County Engineering & Public Works Dept.
2300 N Jog Road
West Palm Beach, FL 33411

Project Name: Lyons Road / Sansbury's Way Buffered Bike Lanes from Forest Hill Boulevard to Okeechobee Boulevard

Subject: Proposal for Construction Engineering and Inspection (CEI) Services PBC CEI Annual Services

BCC Engineering, LLC is pleased to submit this proposal to provide Construction Engineering and Inspection (CEI) Services for the PBC CEI Annual Services - Lyons Road/Sansbury's Way Buffered Bike Lanes from Forest Hill Boulevard to Okeechobee Boulevard

We understand services will be performed for:

CEI Contract No: 2021052 PBC CEI Annual Services

Project Name: Lyons Road / Sansbury's Way Buffered Bike Lanes from Forest Hill Boulevard to Okeechobee Boulevard

Project ID No: 2019604

We will perform the CEI Services as requested by providing the necessary personnel for completion. Please see Exhibit B page 1 and 2 for details of manhours and rates. The total cost for our CEI Services is \$386,038.39.

We appreciate the opportunity to submit this unit price proposal and look forward to working with you on this project. If you have any questions regarding this cost estimate, please contact us at (305) 670.2350.

Sincerely,

Eugenio Ochoa, P.E. Digitally signed by Eugenio Ochoa, P.E.
Date: 2022.08.18 16:56:07 -04'00'

Eugenio Ochoa, P.E.
Vice President

Project Name: Lyons Road / Sansbury's Way Buffered Bike Lanes from Forest Hill Boulevard to Okeechobee Boulevard

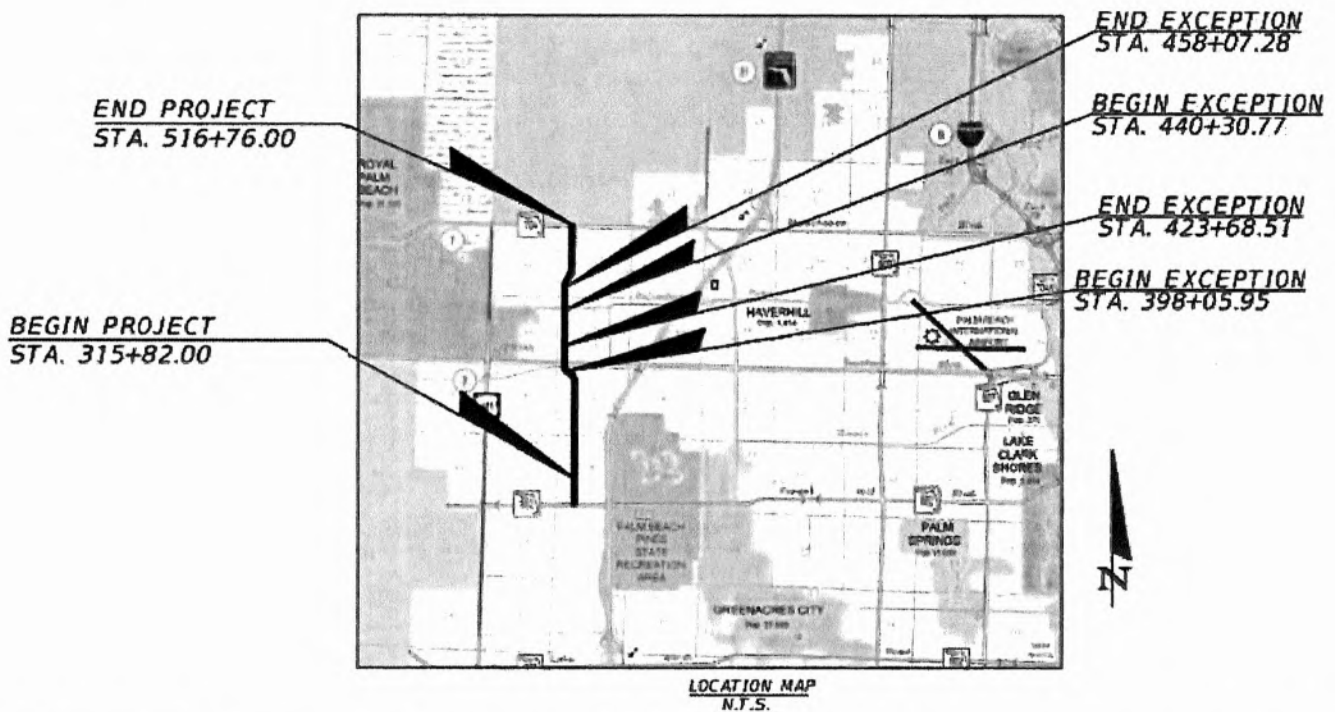
**FEE PROPOSAL AND SCOPE OF SERVICES FOR CONSTRUCTION
ENGINEERING (CEI) ANNUAL SERVICES CONTRACT
PROJECT: LYONS ROAD / SANSBURY'S WAY BUFFERED BIKE
LANES FROM FOREST HILL BOULEVARD TO OKEECHOBEE
BOULEVARD**

P.B.C. PROJECT #2019604 / FDOT FM No. 444370-1-58-01

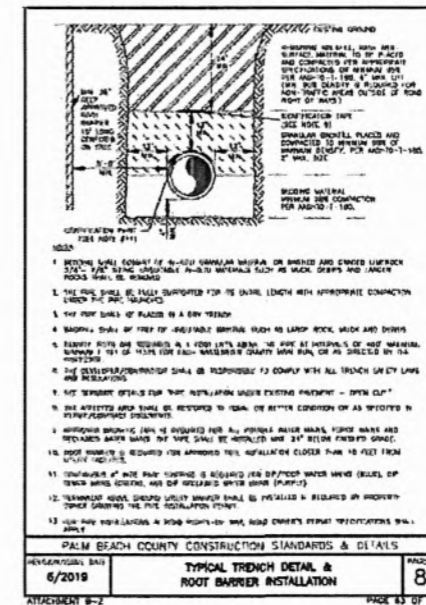
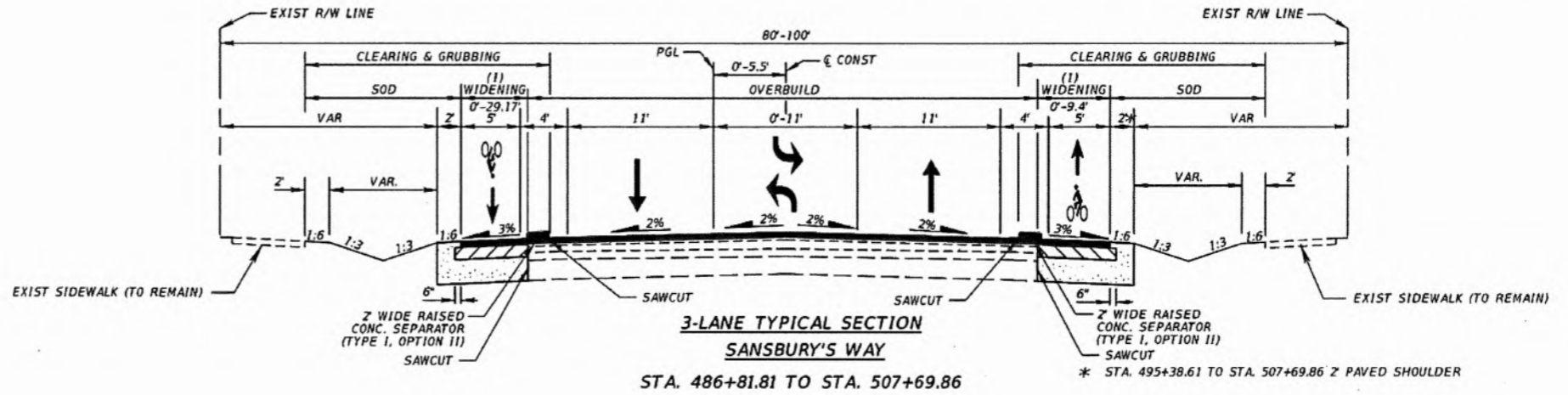
Revised 08/18/2022

Client: Palm Beach County

Location: Lyons Road/Sansbury's Way from Forest Hill Blvd. to Okeechobee Blvd.



Understanding of Scope: BCC Engineering LLC (BCC Engineering) understands the scope that Palm Beach County seeks to install 5' wide bike lanes along both sides of Lyons Road/Sansbury's Way, between Forest Hill Blvd and Okeechobee Blvd. The total project length is 3.806 miles but includes exceptions at Southern Blvd (STA 398+05.95 to STA 423+68.91) and Belvedere Road (from STA 440+30.77 to STA 458+07.28), for a net project length of 2.984 miles. In addition to the widening needed to facilitate the installation of bike lanes, the project will also include the incorporation of new drainage, gravity wall, French drain, pipe handrail, concrete sidewalk and sod. Utility work under this project will involve the adjustment and relocation of approximately 3700 linear feet of 4" and 8" ductile iron pipe (D.I.P) force main utilities, along with the associated deflections, valving, connections, and line stops.



Typical Installation Details for widening for bike lanes (top) and utility relocation (bottom) for Palm Beach County Project #2019604

Project Name: Lyons Road / Sansbury's Way Buffered Bike Lanes from Forest Hill Boulevard to Okeechobee Boulevard

In fulfillment of its Contract with Palm Beach County, BCC Engineering fully intends to perform the following functions which are essential to the successful outcome of this project:

LAP Coordination

We have already initiated contact with the District 4 FDOT LAP Administrator (*Ramon Alvarez*) and the FDOT Palm Beach Operations Field Administrators (*James Lewis and Alexis Burrie*) regarding our upcoming coordination on this project and have a tentative meeting already set up to discuss expectations. We will be utilizing the Construction Administration Procedures as outlined in the Local Agency Program Manual, as the framework of our intent to fulfill all FDOT LAP requirements. This includes requesting and obtaining access to FDOT LAP reporting documentation systems: Local Area Program Information Tool (LAPIT) and Equal Opportunity Compliance (EOC). We will conduct and submit labor interviews for conformance with wage rates and DBE monitoring reports. We will prepare and submit monthly LAP progress reports, upload contract documents, payment applications, change orders, time extensions and all related documents, and we will coordinate and assist the County with reimbursement package submittal.

Contractor Monitoring

We will monitor all work pursued by the Contractor and assure that the Contractor is monitoring all Stormwater pollution prevention measures associated with the project in addition to preparing all necessary reports. We will review and monitor compliance with drawings, contract documents, and all applicable specifications.

Verification Laboratory Material Testing and Sampling Services

Typical sampling and testing for soils, concrete and asphalt by our subconsultant's testing laboratory (Radise International) will be performed at a frequency either indicated in the Contract, or otherwise directed by Palm Beach County Engineering. The Schedule of Testing Services and Fee are attached to Exhibit B of this Scope.

Problem Resolution

We strive to eliminate problems and issues before affecting the progress of the project. We achieve this by thoroughly understanding the plans, the intent of the plans, and the restraints of the governing documents. Upon discovery of any potential issues, we will analyze the impacts and risk exposure to Palm Beach County, along with any proposals submitted by the Contractor for the resolution of the issue, where applicable. We will prepare and submit recommendations to the County's Project Manager and expedite the necessary paperwork.

Payment Review

We will produce the necessary reports; verify quantity calculations, and field measure for payment purposes as required. We will ensure that all payment applications are certified prior to forwarding to the County for review.

Vehicular and Pedestrian Maintenance of Traffic

The plans for this project contain specific details and instruction on how to contend with vehicular and pedestrian traffic, as well as school zone restrictions, while pursuing the work under this Contract. These details must be utilized with Standard Index Drawings for successful execution. We will review the work zone traffic control plan implementation and inspection of maintenance of traffic schemes and devices in work zones to assure they are in accordance with the County's requirements. We will also ensure that the Contractor provides a qualified Worksite Traffic Supervisor as required.

Project Daily Reports

We will maintain a detailed electronic record and hard copy diary, which accurately depicts the Contractor's operations; quantities, testing data, and significant events that affect the work. We will submit daily construction reports to the County's Project Manager on a weekly basis.

Project Meetings

We will initiate our administration of the Contract with a pre-construction meeting to be held within 30 days from the issuance of the NTP. We will also administer bi-weekly project meetings with appropriate team members (the Project Administrator, County PM, Contractor PM, and Field Inspector, at a minimum) in attendance, prepare and distribute meeting minutes to attendees, note changes and /or corrections and ensure all responsible parties approve minutes at subsequent meetings.

Record Drawing Review

As-builts drawings are maintained for the purposes of reflecting any differences between what was intended to be constructed, and what was actually constructed. Throughout the course of the project, we will review as-recorded drawings (if maintained by the Contractor) to verify the Contract Drawings are noted to reflect actual construction and ensure our complete agreement with the as-builts; review monthly status of as-recorded drawings and verify for monthly pay applications; notify the Contractor in a timely fashion of deficiencies noted; provide follow up to verify Contractor maintains as-recorded drawing status up-to-date.

Maintain a Centralized Punch List of Items Requiring Correction

We will develop, maintain, and provide to the County and the Contractor, an on-going list of items requiring correction to encourage the timely correction of noted construction deficiencies, monitor construction throughout the project duration and identify deficient work and materials. This will be a centralized list, to avoid any confusion and missed items. We will provide the Contractor with an updated list at construction meetings and ensure all items on this list are corrected and/or signed off on, prior to project acceptance. The PBC Traffic Division will also inspect and provide a punch list which must also be addressed and signed off on, prior to final acceptance.

Notification of Accident Damage/Injury

We will document any accidents resulting in personal injury and/or property damage that may be attributed to construction activities. A report will be made completed and sent to the County's Project Manager, including any associated documentation such as a police report and photographs where appropriate.

Contract Interpretations and Modifications

We will receive, log, and coordinate reviews and responses to Contractor's Requests for Information (RFI's) following Palm Beach County approval and concurrence; responses to RFI's will be provided to the Contractor within seven (7) days; after PBC concurrence, prepare and issue response letters, field orders, or Change Proposal Requests as required.

Administration of Changed Work

We will receive from the Contractor all proposed changes to the work, and after analysis, inform the County's Project Manager with the appropriate recommendations, based on the reasoning behind the changes. We will track changes from initiation through completion; estimate cost and time impacts, and assist with negotiation of changes in contract time and cost; we will prepare change orders to incorporate changes within Contract Documents; evaluate the Project on a continual basis to determine when changes are required; include justification documents with each Change Order; maintain current status logs of all Change Proposal Requests and Change Orders; review as-recorded (as-built) drawings to verify changes in work are reflected as applicable; review pay requests to verify Change Order items are broken down into component form and ensure that payment is not made until work is complete.

Construction Disputes and Claims

We will review and provide initial recommendations on disputes or claims in response to written notification of claims made by the Contractor, in accordance with the provisions of the Contract Documents, asserting the right to an adjustment in either Contract Price or Contract Time.

Contractor's Payment Applications to Palm Beach County

We will receive and review draft applications for payment prepared by the Contractor and note and attempt to reconcile discrepancies between Engineer's estimate of progress and Contractor's application; we will review draft application for payment in comparison to measured or estimated quantities and make notations of deficient work not recommended for payment until corrected. We will assess appropriate including deletion of payment for stored materials and/or equipment which do not have approved shop drawings and/or proper invoices in addition to a reduction of value for partially completed items claimed as complete; we will return a copy of the reviewed draft to the Contractor, meet with Contractor to reconcile discrepancies, review revised application for payment and, if acceptable, recommend payment and forward to the County Project Manager for processing. For any projects involving LAP funding, we will ensure that the Department LAP Coordinator is corresponded with in a timely manner, as to properly inform them (and seek their agreement) of the quantities the Contractor is seeking payment for.

Project Closeout – Substantial Completion and Inspection

Our inspections are ongoing; however, we will receive and review the Contractor's required substantial completion submittal and determine if the Project is ready for substantial completion inspection. We will develop substantial completion submittal checklist and perform the following activities: verify submittal of all required documents, review the Contractor's Record Drawings, perform drafting of Record Drawing

revisions on reproducible set and transmit to the County's Project Manager for concurrence, review other substantial completion submittal documents for completeness and compliance with Contract provisions, and schedule substantial completion inspection after PBC concurrence. We will compile a centralized punch list and distribute to the parties conducting the walk-thru inspection, as required. We will review the progress of corrective action on punch list items, and when appropriate issue the Certificate of Substantial Completion with a list of stated qualifications (punch list). We will notify all project team members of the date of the Substantial Completion Inspection; review progress of corrective actions on punch list items, periodic updates and re-issuance of the punch list; identify tentative substantial completion and prepare and issue the Certificate of Substantial Completion with a list of stated qualifications (punch list).

Project Closeout - Final Completion, Inspection and Payment

We will receive and review the Contractor's required final completion submittal, develop final completion submittal checklist and verify the submittal of all required documents and review for completeness and compliance with Contract provisions. We will notify the County Project Manager, Contractor, and other affected parties of date of final inspection and coordinate, attend and conduct the final inspection meeting and physical walk-through of the Project. We will compile, secure and transmit to the County warranties and similar submittals required by the Contract Documents for delivery to the County and deliver all spare parts, keys, manuals and record drawings to the County. We will provide Project Certification to permitting agencies based on Contractor provided Record Drawings, Tests, Product Certifications, Documents, as necessary to close out the Project. We will support the County with preparation and submittal of FDOT LAP close-out package ('Blue Folder'), ensuring that any LAP Final Inspection and Acceptance Procedures per the LAP Manual are closely followed in a timely manner. Collect all payment documents required, including all certifications from any suppliers or subcontractors of payment by the Prime Contractor, and forward to the Construction Project Manager for processing along with the Contractors Final Application and Certificate for Payment; finalize all project costs and determine the final adjusted amounts for construction; obtain Contractor's signature on any required Contractor's Certification or Affidavits; process and sign Final Application for Payment; prepare transmittal letter.

Proposed Staffing Discussion: Based on the Plans provided, the scope as previously mentioned involves the relocation through installation of approximately 3700 combined linear feet of 4" and 8" diameter force main and associated accompanying items (line stops, tie-ins, etc). The installation of 5' wide (each way) bike lanes along Lyons Road/Sansbury's Way will entail approximately 3 miles of widening to facilitate the incorporation of additional typical section width. Sidewalks, drainage, and other essential items will also need to be installed to accommodate this widening. In not knowing the capacity of the Contractor prior to the project being awarded, assumptions will have to be made with regards to the manner in which the work will be pursued. The safest approach will be to assume that the Contractor will subcontract out or self-perform the utility work at the same time the widening is taking place. Our approach will be to place a senior inspector with a background in water utilities on this work activity fulltime. Because of the propensity for work of dubious and varying quality to be carried out by different Contractors, we have learned through experience that inspection needs to be ever-present on water utility work. This cannot be compromised. We also recognize that depending on the resources of the

Project Name: Lyons Road / Sansbury's Way Buffered Bike Lanes from Forest Hill Boulevard to Okeechobee Boulevard

Contractor, the widening of Lyons Road/Sansbury's Way could be conducted at the same time – albeit in different locations, as the utility relocation. Due to the sheer length of the project, one must assume that the widening Contractor could conduct different operations at various locations along the corridor (e.g., clear and grub to begin drainage at specific locations as clearing and grubbing continues throughout). To capture this effort, we recommend two (2) experienced senior inspectors to witness and document this work, however, for the purposes of this scope discussion, we have relegated our suggestion to only providing one (1) additional senior inspector to capture all remaining work. Should the Contractor's approach differ from what we have presented here, we will approach Palm Beach County at the appropriate time, to further suggest the adjustment the staffing to suit the Contractor's effort.

The parttime Senior Project Engineer, will be ultimately responsible for the quality of the inspection outcomes on the project, and along with the parttime Project Administrator, will be the persons in direct communication with Palm Beach County Engineering, Utilities, Traffic Management, and the Florida Department of Transportation. They will also serve as a first line of response to any public complaints or inquiries.

As a LAP-funded project, there will be additional criteria that must be recognized and adhered to, in order to ensure compliance and eliminate funding issues. Our Resident Compliance Specialist/Contract Support Specialist (RCS/CSS) will ensure fulfillment of LAP standards per Chapter 23 of the Local Agency Program Manual.

Duration: The scope of work should be completed in 15 months (450 days). With regards to our field inspectors, the Contractor will work the industry standard of 10 hours a day on a 5 day-a-week calendar. Should the Contractor be approved to work a 6-day calendar, then it should be recognized by the Client that the estimated hours in this scope will be adjusted to reflect the number of eligible workdays in a week. The hourly estimates for office personnel will be predicated on an 8-hour workday.

Proposed CEI Staffing

CEI Senior Project Engineer: Coordinate with PBC project manager any contract related concerns throughout the duration of the TWO. Review the contractor schedule to ensure conformance with contract documents, provide a written review of the schedule identifying significant omissions, improbable or unreasonable activity durations and errors in logic. Coordinate the staffing need to ensure construction activities are covered. Assist the project administrator with any technical issues that may arise during the construction duration.

CEI Project Administrator: Coordinate the Construction Contract administration activities of all parties other than the Contractor involved in completing the construction project. Services shall include maintaining the required level of surveillance of Contractor activities, interpreting plans, specifications, and special provisions for the Construction Contract. Maintain complete, accurate records of all activities and events relating to the project and properly document all project changes. Verify the schedule conforms with the construction phasing and MOT sequences, including all contract modifications. Analyze problems that arise on a project and proposals submitted by the Contractor; work to resolve such issues and process the

that arise on a project and proposals submitted by the Contractor; work to resolve such issues and process the necessary paperwork. Verify that the Contractor is conducting inspections, preparing reports, and monitoring all storm water pollution prevention measures associated with the project. Produce reports, verify quantity calculations, and field measure for payment purposes as needed to prevent delays in Contractor operations and to facilitate prompt processing of such information in order for the County to make timely payment to the Contractor. Conduct weekly/bi-weekly progress meeting and distribute minutes to all parties involved.

CEI Contract Support Specialist (CSS): Responsible for the daily compilation of quantities as-installed for the processing of monthly Contractor application for payment for Contract work completed. Responsible for gathering of the documents necessary for the processing of Change Orders. Conduct and submit labor interviews for conformance with wage rates and DBE monitoring reports. Prepare and submit monthly LAP progress report, upload contract documents, payment applications, change orders, and related documents. Coordinate and assist the County with reimbursement package submittal. Assist the County with preparation and submittal of FDOT LAP close-out package ('Blue Folder'). Coordinate with FDOT to ensure LAP requirement compliance.

CEI Senior Roadway Inspector: Monitor Contractor activities, interpreting plans, specifications, and special provisions for the Construction Contract. Maintain complete, accurate field records of all activities and events relating to the project and properly document all project changes. Prepare daily work report (DWR) that include all activities and crews working on the project. Take photographic documentation of pre-construction state and of noteworthy incidents or events during construction. These photographs will be filed and maintained on the Consultant's computer using a digital photo management system. Photographs will be taken the day prior to the start of construction and continue as needed throughout the project. Coordinate along with the Project Administrator and the contractor any work affecting adjacent property owners in advance of work starting. The following activities will be inspected, witnessed, and documented per the FY21/22 Statewide Assurance/Quality Control Guidelists and Critical Requirements:

MOT

- The CEI staff is aware of and enforcing the requirements for MOT utilizing the 2021/2022 FDOT Standard Plans (102-600 series) and MUTCD.
- The CEI is aware that the Contractor will be required to submit a written plan which details each activity involved in the lane closure. The plan shall include Back-up Plans for activities critical to re-opening the lane to traffic. MOT plans and any modification of the Maintenance of Traffic, requires approval of the Palm Beach County Traffic Division.
- The CEI staff is aware of and enforcing the requirement for the Worksite Traffic Supervisor (WTS) is to perform an inspection during the opening of the work zone and for each subsequent MOT Phase.

Project Name: Lyons Road / Sansbury's Way Buffered Bike Lanes from Forest Hill Boulevard to Okeechobee Boulevard

- The CEI staff is aware of and enforcing the requirement to have the Contractor to provide residential and business properties safe, stable, and reasonable access for vehicles and pedestrians (including sidewalks).
- The CEI staff is aware of and enforcing the requirement to have the Contractor stay within the limits of the Right of Way and will restore to its original condition or better upon project completion.

Clearing and Grubbing

- The CEI staff is aware of and enforcing the requirement that the Contractor completely removes any stumps/roots within 12 inches of the surface in any areas where excavation is to be performed.
- The CEI staff will ensure trimming for sign sight distance and tree removal is enforced per the Contract Documents.

Environmental Controls

- CEI staff is aware of and enforcing the requirements that no construction activities may begin until the Erosion and Sediment Control Plan has been approved and implemented.

Earthwork

- CEI will enforce the requirement that all required density test results are documented.
- CEI will ensure that all sampling and testing requirements are met.
- CEI will ensure that all locates are performed prior to excavation and assist the Contractor with any components that may conflict with a utility.
- CEI will ensure that all conduits are installed at 36" below grade and have warning tape buried 24" below grade per the Contract Documents.

Concrete Pavement

- CEI will ensure that all forms are set to line and grade per FDOT Standard Specification 350-5 and meet ADA requirements.
- CEI will ensure forms are not removed for at least 12 hours after placement and after removing the forms, immediately apply curing compound to the sides of the slab per Spec 350-12.3.
- CEI will document concrete delivery ticket information ensure approved mix design is being used.
- CEI will ensure water is not added at the jobsite prior to slump testing. Water may be added after slump testing if the test is within the tolerance slump range. (Spec. 346-7)
- CEI will confirm W/C ratio is computed according to FM 5-501. (Spec 346-5)

Traffic/ITS Items

- CEI will ensure that the Contractor notifies Palm Beach County Traffic Operations prior to starting the work and to provide proper notice for final inspections.
 - CEI will ensure all conduits are sealed with a duct sealant.
 - CEI is aware that the Contractor is required to perform local field operational testing as per the Contract Documents.
-

Project Name: Lyons Road / Sansbury's Way Buffered Bike Lanes from Forest Hill Boulevard to Okeechobee Boulevard

- CEI is aware of and enforcing the requirements for Conduit and Interconnect Cable as per Spec Sections 630 and 632.
- CEI will ensure Section 635 requirements are met for the installation of the Pullboxes.
- CEI will ensure Section 653 and 665 requirements are met for installation of the Pedestrian Signals.

Pavement Markings

- The CEI staff is aware of and enforcing the requirements for the refurbished and proposed striping to be installed per Specification Section 711.

Project Schedule

- As discussed on Sheet 8 of 11 in this scope, the duration of this project is to be 15 (fifteen) months long. Should the tentative start date for this project be mid-October 2022, this would equate to a completion date of mid-January 2024. Once we receive the construction schedule, we will mobilize or staff to ensure all construction activities are inspected and conform to plans and specifications. This project schedule will parallel the construction schedule.
-

Schedule of Fees – Project #2019604

Separated Bike Lanes – From Forest Hill Blvd. To Okeechobee Blvd

Name of Project: Lyons Road / Sansbury's Way Buffered Bike Lanes from Forest Hill Boulevard to Okeechobee Boulevard					Consultant Name: BCC Engineering, LLC			
PBC Project Number: 2019604					Consultant Number:			
Date: 8/18/2022								
Task Description	Total Staff Hours	Staff Categories				Staff Hours By Activity	Salary Cost By Activity	Average Rate Per Task
		CEI Senior Project Engineer \$60.10	CEI Contract Support Specialist \$28.50	CEI Senior Roadway Inspector \$34.03	CEI Senior Roadway Inspector \$34.03			
BASIC SERVICES								
1 1st Month of Construction	249.0	9.0	74.0		166.0	249.0	\$8,298.88	33.33
2 2nd Month of Construction	250.0	9.0	74.0		167.0	250.0	\$8,332.91	33.33
3 3rd Month of Construction	250.0	9.0	74.0		167.0	250.0	\$8,332.91	33.33
4 4th Month of Construction	250.0	10.0	73.0		167.0	250.0	\$8,364.51	33.46
5 5th Month of Construction	250.0	10.0	73.0		167.0	250.0	\$8,364.51	33.46
6 6th Month of Construction	250.0	10.0	73.0		167.0	250.0	\$8,364.51	33.46
7 7th Month of Construction	250.0	10.0	73.0		167.0	250.0	\$8,364.51	33.46
8 8th Month of Construction	250.0	10.0	73.0		167.0	250.0	\$8,364.51	33.46
9 9th Month of Construction	250.0	10.0	73.0		167.0	250.0	\$8,364.51	33.46
10 10th Month of Construction	250.0	10.0	73.0		167.0	250.0	\$8,364.51	33.46
11 11th Month of Construction	250.0	10.0	73.0		167.0	250.0	\$8,364.51	33.46
12 12th Month of Construction	292.0	10.0	73.0	43.0	166.0	292.0	\$9,793.77	33.54
13 13th Month of Construction	292.0	10.0	73.0	43.0	166.0	292.0	\$9,793.77	33.54
14 14th Month of Construction	415.0	9.0	74.0		166.0	415.0	\$13,947.86	33.61
15 15th Month of Construction	415.0	9.0	74.0		166.0	415.0	\$13,947.86	33.61
Total Staff Hours (Basic Services)	4163.0	145.0	1100.0		418.0	2500.0		
Total Staff Cost (Basic Services)		\$8,714.50	\$31,350.00		\$14,224.54	\$85,075.00	\$139,364.04	33.48
						Salary Related Costs - Roadway/Bike Lanes (BCC Engineering, LLC):	\$139,364.04	
							2.77	
						Subtotal Basic Services (Prime Firm):	\$386,038.39	
						Salary Related Costs - Roadway/Bike Lanes (HBC Engineering Company):	\$26,699.04	
							3.00	
						Subtotal Basic Services (Subconsultants):	\$80,097.12	
						Salary Related Costs - Utility Relocation (HBC Engineering Company):	\$34,030.10	
							3.00	
						Subtotal Basic Services (Subconsultants):	\$102,090.30	
						Verification Testing (Radise International, L.C.):	\$35,595.00	
						Subtotal Basic Services (Lab Services):	\$35,595.00	
						Total Basic Services:	\$603,820.81	
						Grand Total Basic Services:	\$603,820.81	

325 Days - 2500 hours (8 Hour Days)

Hours:

Positions	Project Hours	Intended % Utilization	Total Hours
CEI Senior Project Engineer	2500	5.8%	145 Hrs
CEI Contract Support Specialist	2500	44.0%	1100 Hrs
CEI Senior Roadway Inspector	2500	16.7%	418 Hrs
CEI Senior Roadway Inspector	2500	100.0%	2500 Hrs

Rates:

Positions	Rate (Approved)	Hours	Costs
CEI Senior Project Engineer	\$60.10	145	\$8,714.50
CEI Contract Support Specialist	\$28.50	1100	\$31,350.00
CEI Senior Roadway Inspector	\$34.03	418	\$14,224.54
CEI Senior Roadway Inspector	\$34.03	2500	\$85,075.00
		Total Costs	\$139,364.04
		Multiplier	2.77
		Subtotal:	\$386,038.39

Total Prime Costs: \$386,038.39



May 3, 2022, (Revised May 11, 2022 and August 18, 2022)

Geoffrey Parker, Project Manager
 BCC Engineering, LLC.
 301 North Olive Avenue
 West Palm Beach, FL 33401
 (561) 684-4000/gparker@bcceng.com

**SUBJECT: Proposal for Construction Engineering and Inspection (CEI) Services
 PBC Annual Services with BCC Engineering - Lyons Road/Sansburys Way
 (Separated Bikelanes – From Forest Hill Blvd. to Okeechobee Blvd. with
 Associated Utility Relocation) Project
 PBC Project ID No. 2019604**

Dear Mr. Parker,

HBC Engineering Company (HBC) is pleased to submit this proposal to provide Construction Engineering and Inspection (CEI) Services for the PBC CEI Annual Services – Lyons Road/Sansburys Way (Separated Bikelanes – From Forest Hill Blvd. to Okeechobee Blvd. with Associated Utility Relocation) Project.

We understand services will be performed for:

**CEI Contract - PBC Annual Services with BCC Engineering
 Project: Lyons Rd / Sansbury's Way Bike Lanes (Separated Bike Lanes – From Forest Hill Blvd. to Okeechobee Blvd. with Associated Utility Relocation)
 PBC Project ID No: 2019604**

We will perform the CEI Services as requested by providing a CEI Senior Inspector with an estimate of 717 man-hours for the separated bike lanes project at \$37.24*3=\$111.72/hr. for a total of \$80,097.12 and estimate of 942.5 man-hours for the utility relocation project at \$36.11*3=\$108.33/hr. for a total of \$102,090.30. Total for both projects \$ 182,187.42.

We appreciate the opportunity to submit this unit price proposal and look forward to working with you on this project. If you have any questions regarding this cost estimate, please contact us at (305) 232-7932.

Sincerely,

HBC Engineering Company

A handwritten signature in black ink, appearing to read "Adebayo Coker".

Adebayo Coker, P.E.

President

Attachment: Schedule of Fees - Project #2019604

Schedule of Fees – Project #2019604

Separated Bike Lanes – From Forest Hill Blvd. To Okeechobee Blvd

Name of Project: Lyons Road / Sansbury's Way Buffered Bike Lanes from Forest Hill Boulevard to Okeechobee Boulevard				Consultant Name: HBC Engineering Company		
PBC Project Number: 2019604				Consultant Number:		
Date: 8/18/2022						
Task Description	Total Staff Hours	Staff Categories		Staff Hours By Activity	Salary Cost By Activity	Average Rate Per Task
		CEI Project Administrator \$49.27	CEI Senior Roadway Inspector \$34.00			
BASIC SERVICES						
1 1st Month of Construction	75.0	10.0	65.0	75.0	\$2,702.70	36.04
2 2nd Month of Construction	75.0	10.0	65.0	75.0	\$2,702.70	36.04
3 3rd Month of Construction	75.5	10.0	65.5	75.5	\$2,719.70	36.02
4 4th Month of Construction	75.5	10.0	65.5	75.5	\$2,719.70	36.02
5 5th Month of Construction	75.5	10.0	65.5	75.5	\$2,719.70	36.02
6 6th Month of Construction	75.5	10.0	65.5	75.5	\$2,719.70	36.02
7 7th Month of Construction	75.5	10.0	65.5	75.5	\$2,719.70	36.02
8 8th Month of Construction	76.5	11.0	65.5	76.5	\$2,768.97	36.20
9 9th Month of Construction	53.0	11.0	42.0	53.0	\$1,969.97	37.17
10 10th Month of Construction	10.0	10.0		10.0	\$492.70	49.27
11 11th Month of Construction	10.0	10.0		10.0	\$492.70	49.27
12 12th Month of Construction	10.0	10.0		10.0	\$492.70	49.27
13 13th Month of Construction	10.0	10.0		10.0	\$492.70	49.27
14 14th Month of Construction	10.0	10.0		10.0	\$492.70	49.27
15 15th Month of Construction	10.0	10.0		10.0	\$492.70	49.27
Total Staff Hours (Basic Services)	717.0	152.0	565.0	717.0	\$26,699.04	37.24
Total Staff Cost (Basic Services)		\$7,489.04	\$19,210.00			
Salary Related Costs - Roadway/Bike Lanes (HBC Engineering Company):						\$26,699.04
						3.00
						\$80,097.12
Total Basic Services:						\$80,097.12

Schedule of Fees – Project #2019604

Utility Relocation

Name of Project: Lyons Road / Sansbury's Way Buffered Bike Lanes from Forest Hill Boulevard to Okeechobee Boulevard				Consultant Name: HBC Engineering Company		
PBC Project Number: 2019604				Consultant Number:		
Date: 8/18/2022						
Task Description	Total Staff Hours	Staff Categories		Staff Hours By Activity	Salary Cost By Activity	Average Rate Per Task
		CEI Project Administrator \$49.27	CEI Senior Roadway Inspector \$34.00			
BASIC SERVICES						
1 1st Month of Utility Relocation	109.5	8.0	101.5	109.5	\$3,845.16	35.12
2 2nd Month of Utility Relocation	109.5	8.0	101.5	109.5	\$3,845.16	35.12
3 3rd Month of Utility Relocation	109.5	8.0	101.5	109.5	\$3,845.16	35.12
4 4th Month of Utility Relocation	110.5	9.0	101.5	110.5	\$3,894.43	35.24
5 5th Month of Utility Relocation	110.5	9.0	101.5	110.5	\$3,894.43	35.24
6 6th Month of Utility Relocation	110.5	9.0	101.5	110.5	\$3,894.43	35.24
7 7th Month of Utility Relocation	110.5	9.0	101.5	110.5	\$3,894.43	35.24
8 8th Month of Utility Relocation	111.0	9.0	102.0	111.0	\$3,911.43	35.24
9 9th Month of Utility Relocation	9.0	9.0		9.0	\$443.43	49.27
10 10th Month of Utility Relocation	9.0	9.0		9.0	\$443.43	49.27
11 11th Month of Utility Relocation	9.0	9.0		9.0	\$443.43	49.27
12 12th Month of Utility Relocation	9.0	9.0		9.0	\$443.43	49.27
13 13th Month of Utility Relocation	9.0	9.0		9.0	\$443.43	49.27
14 14th Month of Utility Relocation	8.0	8.0		8.0	\$394.16	49.27
15 15th Month of Utility Relocation	8.0	8.0		8.0	\$394.16	49.27
Total Staff Hours (Basic Services)	942.5	130.0	812.5	942.5	\$34,030.10	36.11
Total Staff Cost (Basic Services)		\$6,405.10	\$27,625.00			
Salary Related Costs - Utility Relocation (HBC Engineering Company):					\$34,030.10	
					3.00	
					<u>\$102,090.30</u>	
Total Basic Services:					\$102,090.30	



May 3, 2022 (Revised 08-18-22)

BCC Engineering
Attn.: Mr. Geoff Parker, P.E. - SR Project Engineer
 6401 SW 87th Avenue, Suite 200
 Miami, FL 33173
gparker@bcceng.com
 305-670-2350 / 954-325-6880 (Cell)

**Subject: Proposal for Construction Materials Testing and Inspection Services
 CEI and VT Proposal for Lyons Rd/Sansbury's Way Bike Lanes Project
 PBC Project ID No: 2019604, Palm Beach County, Florida**

Dear Mr. Parker,

RADISE International LC (RADISE) is pleased to submit this proposal to provide Construction Materials Testing and Inspection Services in connection with the PBC Annual CEI Services - Lyons Rd/Sansbury's Way Bike Lanes Project, PBC Project ID No: 2019604, Palm Beach County, Florida.

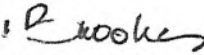
We understand that the project will include:


CEI Contract: PBC Annual Services with BCC Engineering
Project: Lyons Rd/Sansbury's Way Bike Lanes
PBC Project ID No: 2019604
RADISE Position: CEI Inspections and Materials VT Testing Services
RADISE Scope Fee Rate Estimate: \$35.00/hr.*3 = \$105.00/hr. Estimate 60 hours of Engineering Support Services for Project Quality Assurance/Quality Control (QA/QC), Review, and Sign and Seal plus \$29,295.00 of VT Lab Support Services (breakdown attached) for a Total Scope Estimate of \$35,595.00

We will perform the CEI QA/QC and VT Materials Testing Services as requested on a unit price basis. Please see the above and attached cost estimate, based on our approved Palm Beach County Contract Rates.

We appreciate the opportunity to submit this unit price proposal and look forward to working with you on this project. If you have any questions regarding the unit prices or would like us to quote the project based on known quantities, please contact us at 561-841-0103.

Sincerely,
RADISE International
Infrastructure Engineers • Software Developers


Newton M. Brooks
 Construction Services Manager


Gregory J. Stelmack, P.E.
 Vice President

Verification Laboratory Material Testing and Sampling Services

Name of Project: Lyons Road / Sansbury's Way Buffered Bike Lanes from Forest Hill Boulevard to Okeechobee Boulevard			Consultant Name: Radise International, L.C.		
PBC Project Number: 2019604			Consultant Number:		
Date: 8/18/2022					
Task Description	Total Staff Hours	Staff Categories	Staff Hours By Activity	Salary Cost By Activity	Average Rate Per Task
		CEI Senior Inspector \$35.00			
BASIC SERVICES					
1 1st Month of Construction	0.0	0.0	0.0	\$0.00	0.00
2 2nd Month of Construction	0.0	0.0	0.0	\$0.00	0.00
3 3rd Month of Construction	5.0	5.0	5.0	\$175.00	35.00
4 4th Month of Construction	5.0	5.0	5.0	\$175.00	35.00
5 5th Month of Construction	5.0	5.0	5.0	\$175.00	35.00
6 6th Month of Construction	6.0	6.0	6.0	\$210.00	35.00
7 7th Month of Construction	6.0	6.0	6.0	\$210.00	35.00
8 8th Month of Construction	6.0	6.0	6.0	\$210.00	35.00
9 9th Month of Construction	6.0	6.0	6.0	\$210.00	35.00
10 10th Month of Construction	6.0	6.0	6.0	\$210.00	35.00
11 11th Month of Construction	5.0	5.0	5.0	\$175.00	35.00
12 12th Month of Construction	5.0	5.0	5.0	\$175.00	35.00
13 13th Month of Construction	5.0	5.0	5.0	\$175.00	35.00
14 14th Month of Construction	0.0	0.0	0.0	\$0.00	0.00
15 15th Month of Construction	0.0	0.0	0.0	\$0.00	0.00
Total Staff Hours (Basic Services)	60.0	60.0	60.0	\$2,100.00	35
Total Staff Cost (Basic Services)		\$2,100.00			
Salary Related Costs - Material Testing (Radise International, L.C.):					\$2,100.00
					3.00
					\$6,300.00
Material Testing (Radise International, L.C.):					\$29,295.00
					\$29,295.00
Total Basic Services:					\$35,595.00

Material	QC Tests Required	Cost Per Test	Total Testing Cost per Material
Embankment Spec 120-10.3.1	5 – Organic Content	\$55 per test	\$275.00
	5 – LBR Test	\$315 per test	\$1,575.00
	5 – Proctor Tests	\$115 per test	\$575.00
Subgrade Spec 160-4.2.4	20 – Organic Content	\$55 per test	\$1,100.00
	10 – LBR Test	\$315 per test	\$3,150.00
	2 – Proctor Tests	\$115 per test	\$230.00
Base Spec 200-7.2.2	10 – LBR Test	\$315 per test	\$3,150.00
	2 – Proctor Tests	\$115 per test	\$230.00
Asphalt Spec 334-5.5.2	105 - Asphalt Cores	\$75 each	\$7,875.00
	105 - Asphalt Density and Thickness	\$42 per test	\$4,410.00
	21 - Asphalt Extraction and Gradation (Plant Test)	\$225 per test	\$4,725.00
	5 - Coring Machine Rentals	\$400 per trip	\$2,000.00

TOTAL ANTICIPATED MATERIALS TESTING COST: **\$29,295.00**

Material testing estimate makes the following assumptions:

- All concrete is non-structural and therefore not required to be tested
- Plan quantities were utilized and did not take into consideration errors and omissions, or quantities modified through change orders

OEBO SCHEDULE 1

SOLICITATION/PROJECT/BID NAME: Lyons Road / Sansbury's Way Buffered Bike Lanes from Forest Hill Boulevard to Okeechobee Boulevard
 SOLICITATION OPENING/SUBMITTAL DATE: September 1, 2020

SOLICITATION/PROJECT/BID NO.: 2019604
 COUNTY DEPARTMENT: Engineering and Public Works

Section A PLEASE LIST THE DOLLAR AMOUNT OR PERCENTAGE OF WORK TO BE COMPLETED BY THE PRIME CONTRACTOR/CONSULTANT* ON THE PROJECT:
 NAME OF PRIME RESPONDENT/BIDDER: BCC Engineering, LLC ADDRESS: 6401 SW 87Th Avenue, Suite 200, Miami, FL 33173
 CONTACT PERSON: Eugenio Ochoa PHONE NO.: (605) 670-2350 E-MAIL: eochoa@bcceng.com
 PRIME'S DOLLAR AMOUNT OR PERCENTAGE OF WORK: \$386,038.39
 *SMWBE Prime's must include their percentage or dollar amount in the Total Participation line under section B.

Non-SBE MBE WBE SBE

Section B PLEASE LIST THE DOLLAR AMOUNT OR PERCENTAGE OF WORK TO BE COMPLETED BY ALL SUBCONTRACTORS/SUBCONSULTANTS ON THE PROJECT BELOW:

Subcontractor/Sub consultant Name	(Check all Applicable Categories)				DOLLAR AMOUNT OR PERCENTAGE OF WORK					
	Non-SBE	MBE	WBE	SBE	Black	Hispanic	Women	Caucasian	Asian	Other
		Minority Business	Women Business	Small Business						
1. HBC Engineering Company	<input type="checkbox"/>	<input checked="" type="checkbox"/>	<input type="checkbox"/>	<input checked="" type="checkbox"/>	\$182,187.42					
2. Radise International, L.C.	<input checked="" type="checkbox"/>	<input type="checkbox"/>	<input type="checkbox"/>	<input type="checkbox"/>						\$35,595.00
3.	<input type="checkbox"/>	<input type="checkbox"/>	<input type="checkbox"/>	<input type="checkbox"/>						
4.	<input type="checkbox"/>	<input type="checkbox"/>	<input type="checkbox"/>	<input type="checkbox"/>						
5.	<input type="checkbox"/>	<input type="checkbox"/>	<input type="checkbox"/>	<input type="checkbox"/>						

(Please use additional sheets if necessary)

Total Bid/Offer Price \$ 603,820.81
 Total Certified S/M/WBE Participation \$ 182,187.42 / 30.17%

I hereby certify that the above information is accurate to the best of my knowledge: Eugenio Ochoa Vice President
 Name & Authorized Signature Title

- Note:
- The amount listed on this form for a Subcontractor/sub consultant must be supported by price or percentage listed on the properly executed Schedule 2 or attached signed proposal.
 - Only those firms certified by Palm Beach County at the time of solicitation opening or due date are eligible to meet the established OEBO Affirmative Procurement Initiative (API). Please check the applicable box and list the dollar amount or percentage under the appropriate demographic category.
 - Modification of this form is not permitted and will be rejected upon submittal.

A completed Schedule 2 is a binding document between the Prime Contractor/consultant and a Subcontractor/subconsultant (for any tier) and should be treated as such. The Schedule 2 shall contain bolded language indicating that by signing the Schedule 2, both parties recognize this Schedule as a binding document. All Subcontractors/subconsultants, including any tiered Subcontractors/subconsultants, must properly execute this document. Each properly executed Schedule 2 must be submitted with the bid/proposal.

SOLICITATION/PROJECT NUMBER: 2019604

SOLICITATION/PROJECT NAME: Lyons Road/Sainsbury's Way – Forest Hill Blvd. to Okeechobee Blvd. – Buffered Bike Lanes

Prime Contractor: BCC Engineering, LLC Subcontractor: HBC Engineering Company

(Check box(s) that apply)

SBE WBE MBE M/WBE Non-S/M/WBE Date of Palm Beach County Certification (if applicable): 5/24/22-5/23/25

The undersigned affirms they are the following (select one from each column if applicable):

Column 1	Column 2	Column 3
<input checked="" type="checkbox"/> Male <input type="checkbox"/> Female	<input checked="" type="checkbox"/> African-American/Black <input type="checkbox"/> Asian American <input type="checkbox"/> Hispanic American <input type="checkbox"/> Native American	<input type="checkbox"/> Caucasian American <input type="checkbox"/> Supplier

S/M/WBE PARTICIPATION – S/M/WBE Primes must document all work to be performed by their own work force on this form. Failure to submit a properly executed Schedule 2 for any S/M/WBE participation may result in that participation not being counted. Specify in detail, the scope of work to be performed or items supplied with the dollar amount and/or percentage for each work item. S/M/WBE credit will only be given for the areas in which the S/M/WBE is certified. A detailed proposal may be attached to a properly executed Schedule 2.

Line Item	Item Description	Unit Price	Quantity/ Units	Contingencies/ Allowances	Total Price/Percentage
10.1	Roadway Construction Engineering Inspection	\$37.24	717	x3.00 (Multiplier)	\$80,097.12
10.2	Roadway Construction Engineering Inspection - Utility Relocation	\$36.11	942.5	x3.00 (Multiplier)	\$102,090.30

The undersigned Subcontractor/subconsultant is prepared to self-perform the above-described work in conjunction with the aforementioned project at the following total price or percentage: \$182,187.42

If the undersigned intends to subcontract any portion of this work to another Subcontractor/subconsultant, please list the business name and the amount below accompanied by a separate properly executed Schedule 2.

_____ Price or Percentage: _____

Name of 2nd/3rd tier Subcontractor/subconsultant

BCC Engineering, LLC

 Print Name of Prime
 By: _____
 Authorized Signature
 Eugenio Ochoa

 Print Name
 Vice President

 Title
 Date: 7/13/22

HBC Engineering Company

 Print Name of Subcontractor/subconsultant
 By: _____
 Authorized Signature
 Adebayo Coker

 Print Name
 President

 Title
 Date: 07/12/2022

A completed Schedule 2 is a binding document between the Prime Contractor/consultant and a Subcontractor/subconsultant (for any tier) and should be treated as such. The Schedule 2 shall contain bolded language indicating that by signing the Schedule 2, both parties recognize this Schedule as a binding document. All Subcontractors/subconsultants, including any tiered Subcontractors/subconsultants, must properly execute this document. Each properly executed Schedule 2 must be submitted with the bid/proposal.

SOLICITATION/PROJECT NUMBER: 2019604

SOLICITATION/PROJECT NAME: Lyons Road / Sansbury's Way Buffered Bike Lanes from Forest Hill Boulevard to Okeechobee Boulevard

Prime Contractor: BCC Engineering, LLC Subcontractor: RADISE International, L.C.

(Check box(s) that apply)

SBE WBE MBE M/WBE Non-S/M/WBE Date of Palm Beach County Certification (if applicable): _____

The undersigned affirms they are the following (select one from each column if applicable):

Column 1	Column 2	Column 3
<input checked="" type="checkbox"/> Male <input type="checkbox"/> Female	<input type="checkbox"/> African-American/Black <input checked="" type="checkbox"/> Asian American <input type="checkbox"/> Caucasian American	<input type="checkbox"/> Supplier
	<input type="checkbox"/> Hispanic American <input type="checkbox"/> Native American	

S/M/WBE PARTICIPATION – S/M/WBE Primes must document all work to be performed by their own work force on this form. Failure to submit a properly executed Schedule 2 for any **S/M/WBE** participation may result in that participation not being counted. Specify in detail, the scope of work to be performed or items supplied with the dollar amount and/or percentage for each work item. S/M/WBE credit will only be given for the areas in which the S/M/WBE is certified. A detailed proposal may be attached to a properly executed Schedule 2.

Line Item	Item Description	Unit Price	Quantity/ Units	Contingencies/ Allowances	Total Price/Percentage
10.3	Engineering Support Services	\$35.00	60	x3.00 (Multiplier)	\$6,300.00
10.4	Verification Laboratory Material Testing and Sampling Services	\$29,295.00	1		\$29,295.00

The undersigned Subcontractor/subconsultant is prepared to self-perform the above-described work in conjunction with the aforementioned project at the following total price or percentage: \$35,595.00

If the undersigned intends to subcontract any portion of this work to another Subcontractor/subconsultant, please list the business name and the amount below accompanied by a separate properly executed Schedule 2.

_____ Price or Percentage: _____

Name of 2nd/3rd tier Subcontractor/subconsultant

BCC Engineering, LLC
 Print Name of Prime
 By: _____
 Authorized Signature
 Eugenio Ochoa
 Print Name
 Vice President
 Title
 Date: 7/13/20

RADISE International, L.C.
 Print Name of Subcontractor/subconsultant
 By: _____
 Authorized Signature
 Achyut K. Allady
 Print Name
 President
 Title
 Date: 07/13/20

PROJECT HISTORY

Lyons Road / Sansbury's Way Buffered Bike Lines					
Project# 2019604					
Authorization	Supplement	Date Approved	Total Amount	SBE Amount	SBE %
BCC	Original CSA #2	pending	\$ 603,820.81	\$ 182,187.42	30.17%
Project Totals			\$ 603,820.81	\$ 182,187.42	30.17%

Search

Insured Name

CC Engineering, LLC (DX000)

BCC Engineering, LLC (DX00001602)

Active Records Only

Advance Search

nsured Tasks | **Admin Tools**

View

- Insured
- Notes
- History
- Deficiencies
- Coverages
- Requirements
- Contract Screen

Add

Edit

Help

Video Tutorials

Insured

Name:	BCC Engineering, LLC
Account Number:	DX00001602
Address:	6401 SW 87th Avenue, Suite200, Miami, FL, 33173
Status:	Currently in Compliance.

Insured

Account Information	
Account Number:	DX00001602
Risk Type:	Standard - Professional Services
Do Not Call:	Address Updated:
Address Information	
Mailing Address	Physical Address
Insured:	BCC Engineering, LLC
Address 1:	6401 SW 87th Avenue, Suite200
Address 2:	
City:	Miami
State:	FL
Zip:	33173
Country:	
Contract Information	
Contract Number:	
Contract Start Date:	Contract End Date:
Contract Effective Date:	Contract Expiration Date:
Description of Services:	Safety Form II: No
R2021-0883 Construction Engineering Inspection (CEI) Annual Services	
Contact Information	
Contact Name:	Geoffrey Parker Misc:
Phone Number:	9543256880 Alt Phone Number:
Fax Number:	
E-Mail Address:	gparker@bcceng.com
Approval Date:	
Rush:	No
Contract on File:	No
Certificate Received:	Yes
Indemnification Agreement:	No
Tax Id:	

This Account created by e61 on 09/14/2021.