

PALM BEACH COUNTY
BOARD OF COUNTY COMMISSIONERS

AGENDA ITEM SUMMARY

Meeting Date: April 4, 2023

Consent Regular
 Workshop Public Hearing

Submitted By: Department of Airports

I. EXECUTIVE BRIEF

Motion and Title: Staff recommends motion to approve: Amendment No. 7 to the General Consulting Agreement with RS&H, Inc. for Consulting/Professional Services in the amount of \$1,109,482.80 for the performance of professional Construction Administration (CA) and Resident Project Representative (RPR) services for the Concourse B Expansion – Package 1 project at Palm Beach International Airport (PBI).

Summary: The Consulting Agreement with RS&H, Inc. for general airport planning and design was approved by the Board on May 7, 2019 (R-2019-0612) in the amount of \$2,004,570.58 in order to carry out the approved Capital Improvement Programs for the County’s Airports. Amendment No. 1 was approved by the Board on May 5, 2020 (R-2020-0414) increasing the amount of the contract by \$2,304,608.30. Amendment No. 2 was approved by the Board on October 20, 2020 (R-2020-1607) increasing the amount of the contract by \$3,196,990.03. Amendment No. 3 was approved by the Board on May 4, 2021 (R-2021-0576) exercising the first one (1) year renewal option for the continuation of services provided under this agreement. Amendment No. 4 was approved by the Board on June 15, 2021 (R-2021-0844) increasing the amount of the contract by \$2,644,110.87. Amendment No. 5 was approved by the Board on March 22, 2022 (R-2022-0263) increasing the amount of the contract by \$1,325,943.87 and exercising the second and final one year renewal option. Amendment No. 6 was approved by the Board on January 24, 2023 (R-2023-0103) increasing the amount of the contract by \$1,175,706.57. Amendment No. 7 will provide an additional \$1,109,482.80 to complete Task I Services – Concourse B Expansion Package 1 – CA and Partial RPR Services. RS&H, Inc. is a Jacksonville, Florida based firm; however, the majority of the work to be completed in this agreement will be managed through their Fort Lauderdale, Florida offices in conjunction with several Palm Beach County-based and South Florida-based sub-consultants and firms. A Disadvantaged Business Enterprise (DBE) goal of 18% was set for this contract. RS&H, Inc. committed to 23% DBE participation for this agreement. The anticipated DBE participation based upon the approved tasks is 35.07%. The current paid to date DBE participation is 34.14%. The DBE participation for this Amendment is 10.23%. Pursuant to changes to Chapter 332, Florida Statutes, effective October 1, 2020, a governing body of a commercial service airport may not approve purchases of contractual services in excess of the Category Five threshold amount of \$325,000 provided in Section 287.017, Florida Statutes, on a consent agenda. This amendment exceeds the threshold amount and must be approved on the regular agenda. Countywide (AH)

Background and Policy Issues: In order to carry out the approved Capital Improvement Program for the County, the Department of Airports requires professional planning and design engineering services. This agreement is for 2 years with 2 one (1) year renewal options. This amendment provides professional CA and RPR services required to complete the Concourse B Expansion – Package 1 project at PBI.

Attachments:

1. Amendment No. 7 with RS&H, Inc. – 2 Originals
2. DBE Goal Information

Recommended By: *Carolanna Bube* 3-1-23
Department Director Date

Approved By: *MBaker* 3/15/23
County Administrator Date

II. FISCAL IMPACT ANALYSIS

A. Five Year Summary of Fiscal Impact:

| Fiscal Years | <u>2023</u> | <u>2024</u> | <u>2025</u> | <u>2026</u> | <u>2027</u> |
|--|------------------------------|-------------|-------------|-------------|-------------|
| Capital Expenditures | <u>\$1,109,482.80</u> | _____ | _____ | _____ | _____ |
| Operating Costs | _____ | _____ | _____ | _____ | _____ |
| External Revenues (Grants) | _____ | _____ | _____ | _____ | _____ |
| Program Income (County) | _____ | _____ | _____ | _____ | _____ |
| In-Kind Match (County) | _____ | _____ | _____ | _____ | _____ |
| NET FISCAL IMPACT | <u><u>\$1,109,482.80</u></u> | _____ | _____ | _____ | _____ |
| # ADDITIONAL FTE POSITIONS (Cumulative) | _____ | _____ | _____ | _____ | _____ |

Is Item Included in Current Budget? Yes X No _____
 Does this item include the use of federal funds? Yes _____ No X

Budget Account No: Fund 4111 Department 121 Unit A392 Object 6504
 Reporting Category _____

B. Recommended Sources of Funds/Summary of Fiscal Impact:

Approval of this item will result in an increase of \$1,109,482.80 in services related to RS&H; which is in the current budget.

C. Departmental Fiscal Review: Debbie Duncan
(initials) 2/28/23

III. REVIEW COMMENTS

A. OFMB Fiscal and/or Contract Development and Control Comments:

| | |
|--|--|
| <p><u>Line Ma</u> 3/3/23 OFMB 9A 3/2 EDW 3-2-23</p> | <p><u>Joe J. Jaworski</u> Contract Dev. and Control JMB 3/6/23</p> |
|--|--|

B. Legal Sufficiency:
Anne Helfant 3/6/23
 Assistant County Attorney

C. Other Department Review:

 Department Director

REVISED 11/17

(THIS SUMMARY IS NOT TO BE USED AS A BASIS FOR PAYMENT)



10748 Deerwood Park Blvd South
Jacksonville, FL 32256

☎ 904-256-2500
F 800-485-6891
rsandh.com

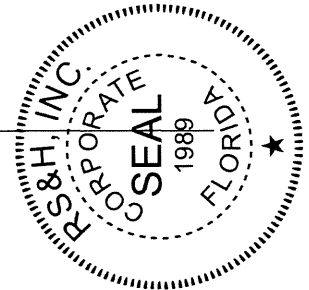
**CORPORATE RESOLUTION
AUTHORIZING SIGNATORY FOR
PALM BEACH COUNTY CONTRACTS**

I, John J. Bottaro, the undersigned Corporate Secretary of RS&H, Inc., a Florida Corporation (the “Corporation”), hereby certify that: The Corporation is duly organized and existing under the laws of the State of Florida and the following is a true, accurate and complete transcript of a resolution contained in the minute book of the Board of Directors of said Corporation duly held on the 5th day of May, 2021, at which meeting there was present and acting throughout a quorum with full power and authority to adopt this resolution and confer the powers granted to the person hereinafter described, and that the proceedings of said meeting were in accordance with the charter and by-laws of said Corporation, and that said resolution has not been amended or revoked and is in full force and effect:

RESOLVED, that Rodney L. Bishop, Jr., Senior Vice President of the Corporation, is hereby authorized and empowered to execute in the name of the Corporation all proposals, agreements, supplements, contracts, and other documents he may deem necessary or appropriate, in connection with Palm Beach County, Florida.

IN WITNESS WHEREOF, I have executed my name as Corporate Secretary and affixed the seal of the Corporation this 13th day of May, 2021.

DocuSigned by:
John Bottaro
B14593960B964A5
John J. Bottaro
Corporate Secretary





3125 W Commercial Blvd, Suite 130
Fort Lauderdale, FL 33309

☎ 954-474-3005
☎ 954-474-3006
rsandh.com

February 6, 2023

Palm Beach County Department of Airports
ATTN: Mr. Michael Giambrone, Director of Airports Planning
846 Palm Beach International Airport
West Palm Beach, Florida 33406-1470

**RE: Airport Facilities & Systems Planning, Design, Engineering and Construction
Management Professional Services for Palm Beach County Department of Airports
AMENDMENT NO. 7 TO CONTRACT**

Dear Mr. Giambrone,

RS&H is pleased to submit for your review and approval the Amendment No. 7 for the *Airport Facilities & Systems Planning, Design, Engineering and Construction Management Professional Services* project at Palm Beach International Airport.

Please contact me if any questions regarding this transmittal. My direct phone is (904) 256-2437.

Respectfully submitted,

RS&H, Inc.

DocuSigned by:

4CB126E58A4642F
Pat Hargrove, AIA NCARB
Vice President, Aviation

Cc: Rodney L. Bishop

**AMENDMENT NO. 7 TO CONTRACT
BETWEEN
PALM BEACH COUNTY DEPARTMENT OF AIRPORTS
AND
RS&H, INC.
FOR
FOR CONSULTING / PROFESSIONAL SERVICES
AT
PALM BEACH COUNTY AIRPORTS**

This Amendment No. 7 to the Contract is made as of the _____ day of _____, 2023, by and between **Palm Beach County**, a Political Subdivision of the State of Florida, by and through its Board of Commissioners, hereinafter referred to as the **COUNTY**, and **RS&H, Inc.**, [] an individual, [] partnership, [X] a corporation authorized to do business in the State of Florida, hereinafter referred to as the **CONSULTANT**, whose Federal Tax I.D. number is 59-2986466.

WITNESSETH

WHEREAS, on May 7, 2019, the COUNTY entered into an Agreement (R2019-0612) with the CONSULTANT for the CONSULTANT to provide Consulting / Professional Services for the Palm Beach County Department of Airports at Palm Beach County Airports (PBI, F45, LNA, & PHK); and

WHEREAS, on May 5, 2020, the COUNTY entered into an Amendment No. 1 (R-2020-0414) with the CONSULTANT to provide additional professional services for the Department of Airports, Palm Beach County, in accordance with Article 26 of the original Agreement; and

WHEREAS, on October 20, 2020, the COUNTY entered into an Amendment No. 2 (R-2020-1607) with the CONSULTANT to provide additional professional services for the Department of Airports, Palm Beach County, in accordance with Article 26 of the original Agreement; and

WHEREAS, on May 4, 2021, the COUNTY entered into an Amendment No. 3 (R-2021-0576) with the CONSULTANT to exercise the first one (1) year renewal option for the continuation of services; and

WHEREAS, on June 15, 2021, the COUNTY entered into an Amendment No. 4 (R-2021-0844) with the CONSULTANT to provide additional professional services for the Department of Airports, Palm Beach County, in accordance with Article 26 of the original Agreement; and

WHEREAS, on March 22, 2022, the COUNTY entered into an Amendment No. 5 (R-2022-0263) with the CONSULTANT to exercise the second and final one (1) year renewal option for the continuation of services and to provide additional professional services for the Department of Airports, Palm Beach County, in accordance with Article 26 of the original Agreement; and

WHEREAS, on January 24, 2023, the COUNTY entered into an Amendment No. 6 (R-2023-0103) with the CONSULTANT to provide additional professional services for the Department of Airports, Palm Beach County, in accordance with Article 26 of the original Agreement;

WHEREAS, Article 26 of the Contract requires an amendment when the parties are able to define additional services and the parties have now defined those services,

NOW THEREFORE, in consideration of the mutual covenants herein contained, and such other good and valuable consideration, the receipt of which the parties hereby acknowledge, the parties agree to the following terms and conditions:

1. The parties hereby agree to amend the Contract to include the Scope of Services and Fees as outlined in Exhibit A. The total amount to be paid by the COUNTY to the CONSULTANT for professional services, including any out of pocket expenses, shall not exceed One Million, One-Hundred Nine Thousand, Four Hundred Eighty-Two Dollars and Eighty Cents (\$1,109,482.80) for the services in Amendment No. 7 to the original Contract.
2. Except as specifically amended herein, all other terms and conditions of the Contract shall remain in full force and effect.

REMAINDER OF PAGE INTENTIONALLY LEFT BLANK

IN WITNESS WHEREOF, the parties have caused the Seventh Amendment to the Contract to be signed by the Mayor of the Board of County Commissioners and the Seal of said Board to be fixed hereto and attested by the Clerk of said board, and the CONSULTANT, RS&H, Inc., has caused these presents to be signed in its corporate name by its duly authorized officer (Name) Rodney L. Bishop, (Title) Executive Vice President - Infrastructure, acting on behalf of said CONSULTANT, and the Seal of said CONSULTANT to be affixed hereto and attested by the Secretary of said CONSULTANT, the day and year first written above.

ATTEST:

PALM BEACH COUNTY, FLORIDA

JOSEPH ABRUZZO
CLERK OF THE COUNTY COURT
AND COMPTROLLER

BOARD OF COUNTY COMMISSIONERS

By: _____
Deputy Clerk

By: _____
Gregg K. Weiss, Mayor

WITNESS:

CONSULTANT:

DocuSigned by:
Shelly McLane
E1F054861E02496
SIGNATURE

RS&H, Inc.
COMPANY NAME

Shelly McLane
Name (type or print)

DocuSigned by:
Rodney Bishop
4492FF0499E0486...
Signature

Rodney L. Bishop
Name (type or print)

APPROVED AS TO FORM
AND LEGAL SUFFICIENCY

Executive Vice President - Infrastructure
Title

BY: *Anne Telford*
County Attorney

(Corporate Seal)

APPROVED AS TO TERMS
AND CONDITIONS

By: *Laura Bels*
Department Director

AMENDMENT NO 7 INDEX

CERTIFICATE OF INSURANCE

EXHIBIT A: AMENDMENT NO. 7

EXHIBIT A-1 – Task I-23-PBI-R-031: Concourse B Expansion Package 1 – Construction Administration & Partial RPR Services

EXHIBIT A-2 – Task III Services

EXHIBIT B: DETAILED FEES, EXPENSES AND PAYMENTS

EXHIBIT B-I: Summary of Fees

EXHIBIT B-II: Schedule of Payments

EXHIBIT C – PROPOSED SCHEDULES

EXHIBIT D – DISADVANTAGED BUSINESS ENTERPRISE COMPLIANCE

CERTIFICATE OF INSURANCE



**Palm Beach County
Compliance Summary Report**

| Vendor Number | Vendor Name | AM Best Rating | Insurance Carrier | Policy # | Eff. Date | Exp. Date | Coverage | Contract Number | Contract Name |
|---------------|-------------|----------------|--|-------------------|-----------|-----------|------------------------|-----------------|----------------------------------|
| DX00000525 | RS&H, Inc. | Modified | Compliant | | | | | DOA 18-2A | Consulting/Professional Services |
| | | A+g , XV | Zurich American Insurance Company | BAP146956400 | 6/28/2022 | 6/28/2023 | Auto Liability | | |
| | | A+g , XV | American Guarantee and Liability Insurance Company | AUC146955800 | 6/28/2022 | 6/28/2023 | Excess Liability | | |
| | | A , XV | Lloyd's | B0146LDUSA2204895 | 6/28/2022 | 6/28/2023 | Excess Liability | | |
| | | A++g , XV | Travelers Property Casualty Company of America | EX6T35064A22NF | 6/28/2022 | 6/28/2023 | Excess Liability | | |
| | | A+g , XV | Zurich American Insurance Company of Illinois | GLO146640900 | 6/28/2022 | 6/28/2023 | General Liability | | |
| | | A , XV | Lloyd's | B0146LDUSA2204894 | 6/28/2022 | 6/28/2023 | Professional Liability | | |
| | | A+g , XV | Zurich American Insurance Company | WC146641000 | 6/28/2022 | 6/28/2023 | Workers Comp | | |

Risk Profile : Standard - Professional Services
Required Additional Insured : Palm Beach County Board of County Commissioners
Ownership Entity :

EXHIBIT A: AMENDMENT NO. 7

This Amendment No 7 is in accordance with the Contract for Consulting/Professional Services (Agreement R-2019-0612) between Palm Beach County (COUNTY) and RS&H, Inc. (CONSULTANT) dated May 7, 2019.

CERTIFICATE OF INSURANCE

EXHIBIT A: AMENDMENT NO. 7

EXHIBIT A-1 – Task I-23-PBI-R-031: Concourse B Expansion Package 1 – Construction Administration & Partial RPR Services

EXHIBIT A-2 – Task III Services

EXHIBIT B: DETAILED FEES, EXPENSES AND PAYMENTS

EXHIBIT B-I: Summary of Fees

EXHIBIT B-II: Schedule of Payments

EXHIBIT C – PROPOSED SCHEDULES

EXHIBIT D – DISADVANTAGED BUSINESS ENTERPRISE COMPLIANCE

**EXHIBIT A-1 – Task I-23-PBI-R-031: Concourse B Expansion Package 1 –
Construction Administration & Partial RPR Services**

***Concourse B Expansion:
Package 1 - Construction
Administration & Partial RPR
Services***

Version 1.0

January 26, 2023

Palm Beach County (PBC) Department of Airports (DOA)
West Palm Beach, FL

Task Authorization No. I-23-PBI-R-031

RS&H Project No.: 2006-3101-031

Prepared by RS&H, Inc. at the
direction of PBC DOA.

RS&H

I PROJECT DESCRIPTION

The Airport has requested that RS&H (Consultant) under the Agreement with RS&H for Airport Facilities and System Consulting Services for Palm Beach County Department of Airports Project No. DOA 18-2A provide a scope and fee for Construction Administration (CA) and Resident Project Representative (RPR) Services for the Concourse B Expansion: Package 1 Construction Project at Palm Beach International Airport (Project).

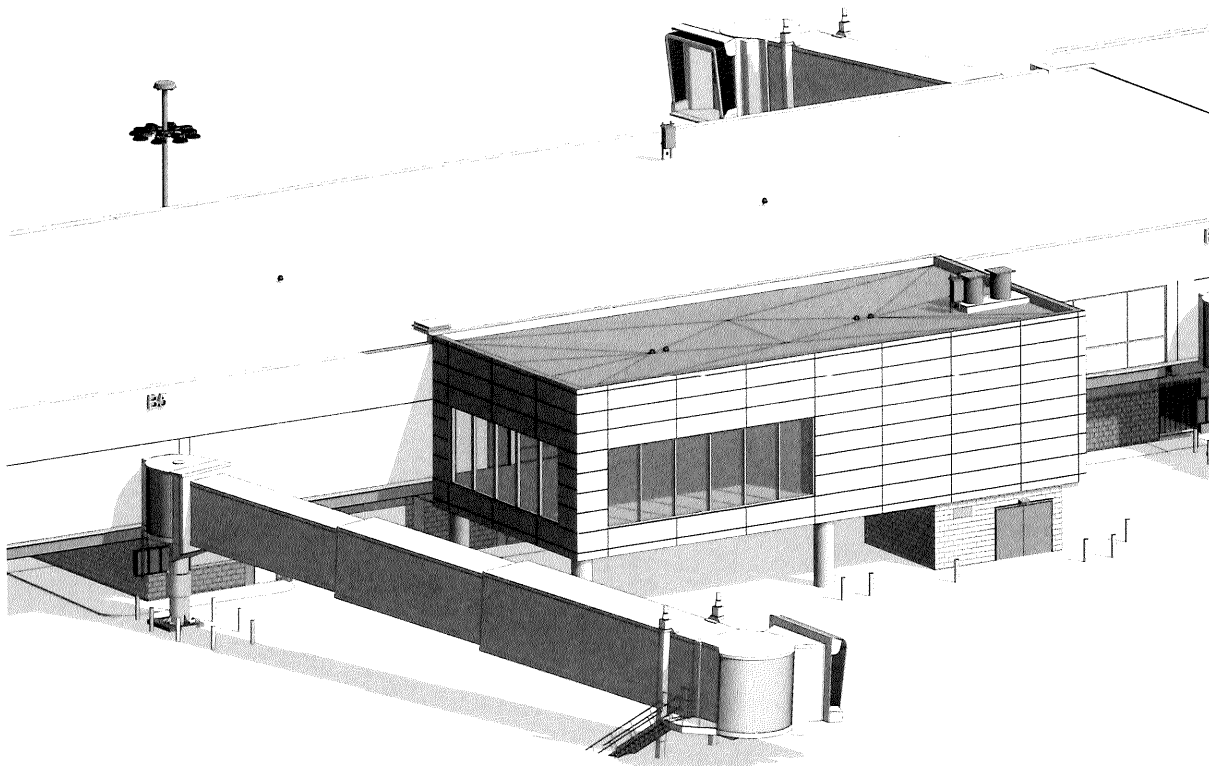
The following professional disciplines/services/specialties are expected to play a significant role in the development of the Project:

- » Project Management
- » Civil Engineering (Airfield) CA
- » Civil Utility (Water and Sanitary) Engineering CA
- » Architecture/Life Safety CA
- » Interior Design/FFE CA
- » Structural Engineering CA
- » Mechanical Engineering CA
- » Plumbing Engineering CA
- » Fire Protection Engineering CA
- » Wayfinding/Signage CA
- » Electrical Engineering CA
 - Lighting
 - Power
 - Addressable Fire Alarm
 - Updating Short Circuit, Device Coordination and Arc Flash Analysis
- » Low Voltage Systems CA
 - Security (Access Control)
 - IT Network Systems
 - Paging System
- » Threshold Inspection (T/I)
- » Partial Resident Project Representative (RPR) Services (Site & Building)

The Consultant's Design Team is made up of the following professionals:

| <u>Consultant/Subconsultant</u> | <u>Involvement</u> |
|--------------------------------------|---|
| RS&H, Inc. | Civil (Airfield), Architecture/Life Safety, Interiors, Structural, Low Voltage, Wayfinding / Signage, RPR: Building, Project Management |
| Keith and Associates, Inc. JLRD | Civil Utility (Water and Sanitary), RPR: Site Mechanical, Plumbing, Fire Protection (including smoke evaluation) |
| Quantum Electrical Engineering, Inc. | Electrical – Power, Lighting, Lightning Protection, Fire Alarm |
| Tierra South Florida | Material Testing (Quality Assurance Testing)/ Threshold Inspection |

FIGURE 1: CONCOURSE B - WEST BUMPOUT



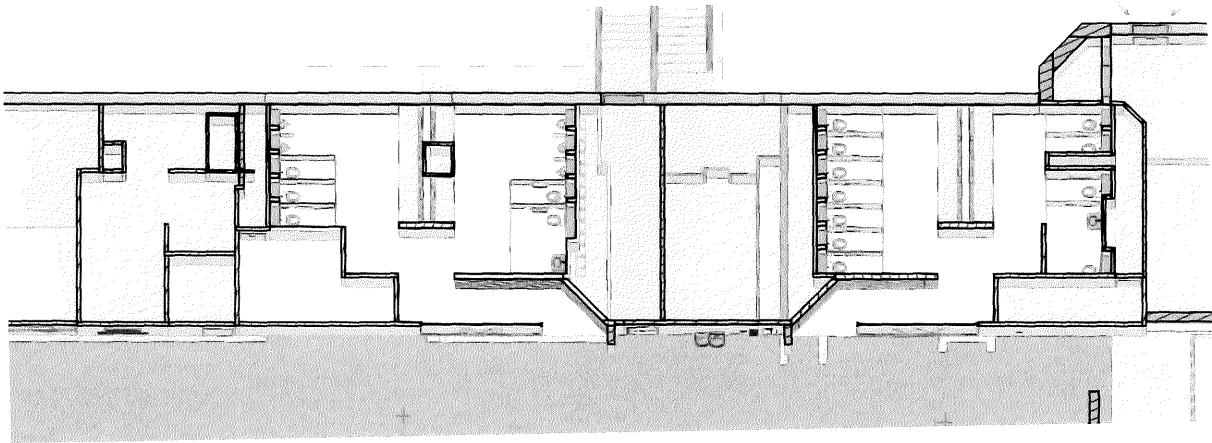


FIGURE 2: NEW RESTROOMS & TEMP KITCHEN

Project includes the following Tasks:

- » Task 1: Construction Administration Services
- » Task 2: Project Closeout
- » Task 3: Partial Resident Project Representative (RPR) Services

This proposal is to provide construction administration services and partial RPR services to support the construction phase of the Concourse B Package 1 project. The project includes the renovation of the existing Concourse B footprint on Level 2 from B4 Holdroom to B6 Holdroom on the east side of the main circulation to include reconfiguration of the mens and womens restrooms, and the addition of a 2-story building adjacent to B7 Holdroom along with the interior renovation of Flask and Cannon to a new concession space.

Funding Expectations – The Project’s total construction cost is approximately \$12,300,000 (excluding escalation) per the CMAR GMP.

Project Duration – The Project’s schedule is based on the schedule completed by the CMAR (Attachment A). The Project time is approximately (16) sixteen months from Notice to Proceed (NTP) to Substantial Completion (SC) / Certificate of Occupancy (CO). The estimated construction time is approximately (14) fourteen months. The actual construction schedule may vary as the Construction progresses. Changes to the construction schedule may require changes in the Consultant’s Design Team efforts and require adjustments to the compensation indicated in this proposal. Proposal includes an additional month after substantial completion for project closeout.

II PROJECT TASKS

TASK 1 CONSTRUCTION ADMINISTRATION SERVICES

Task 1.1 Pre-Construction Conference

The Consultant's Design Team shall attend one (1) pre-construction conference meeting at the Airport. The CMAR will prepare the Pre-Construction Meeting agenda and meeting minutes, and distribute the minutes to appropriate parties

The following disciplines/individuals will be on-site from the Consultant's Design Team:

- » Project Manager
- » Senior Project Architect
- » Civil Engineer – Airfield
- » Civil Engineer - Utility
- » Structural Engineer
- » Mechanical / Plumbing / Fire Protection Engineer
- » Electrical / Fire Alarm Engineer
- » RPR – Site & Building
- » Threshold Inspector

The following disciplines/individuals will be remote participating via ZOOM or another virtual program from the Consultant's Design Team:

- » Low Voltage Engineer

Task 1.2 RFI / Substitutions / Submittal Review

The Consultant's Design Team shall review and respond to Request for Information (RFI's), substitution requests, shop drawings, samples, and other submissions furnished by the CMAR and submitted to the Consultant. The Consultant's Design Team shall review and approve as required. The Consultant's Design Team will utilize Newforma for tracking, reviewing, and responding to RFIs and submittals.

Proposal is based on an estimated maximum of (25) twenty-five site RFI's and (100) one-hundred building RFI's.

- » Site RFIs – (20) twenty RS&H / (5) five Keith
- » Building RFI's – (55) fifty-five RS&H / (25) twenty-five JLRD / (20) twenty Quantum

Proposal is based on a maximum of (50) fifty site-submittals and (200) two-hundred building Submittals and (15) fifteen site re-submittals and (50) fifty building re-submittals. Submittal review will be limited to the initial review and a single resubmittal. Any submittal reviews beyond two is excluded.

- » Site Submittals – (35) thirty-five RS&H / (15) fifteen Keith
- » Building Submittals – (125) one-hundred twenty-five RS&H / (50) fifty JLRD / (25) twenty-five Quantum
- » Site Re-Submittals – (10) ten RS&H / (5) five Keith
- » Building Re-Submittals – (32) thirty-two RS&H / (12) twelve JLRD / (6) six Quantum

Task 1.3 Witnessing Factory Testing

Quantum shall participate as a witness in the factory testing required by Specifications 26 11 26 for Transformer T-6. Quantum will participate in up to (4) four hours of factory testing via ZOOM or another virtual program.

Task 1.4 Construction Progress Meetings

Members of the Consultant's Design Team shall participate in bi-weekly construction coordination meetings until the Contractor has mobilized, approximately (2) two months. Each meeting is anticipated to be (1) one hour.

- » Pre-Mobilization: (4) four meetings total
 - (4) four Meetings - The Consultant's Design Team will participate via ZOOM or another virtual program.
 - The following individuals will be present from the Consultant's Design Team at each construction meeting:
 - Project Manager
 - Senior Project Architect
 - Civil Engineer – Airfield
 - Civil Engineer - Utility
 - Structural Engineer
 - Mechanical / Plumbing / Fire Protection Engineer
 - Electrical / Fire Alarm Engineer
 - Low Voltage Engineer
 - RPR – Site & Building

Once the Contractor has mobilized and is on-site, members of the Consultant's Design Team shall participate in weekly construction coordination meetings, approximately (14) fourteen months. Each meeting is anticipated to be (1) one hour.

- » Post-Mobilization: (56) fifty-six meetings total

- On-Site: The following disciplines / individuals will be present from the Consultant's Design Team for the number of meeting indicated. The on-site meetings will average (1) one per month and be completed at the same time as Task 1.5.
 - Project Manager – (14) fourteen meetings
 - Senior Project Architect – (7) seven meetings
 - Civil Engineer – Airfield – (8) eight meetings
 - Civil Engineer – Utility – (4) four meetings
 - Structural Engineer – (8) eight meetings
 - Mechanical / Plumbing / Fire Protection Engineer – (8) eight meetings
 - Electrical / Fire Alarm Engineer – (8) eight meetings
 - Low Voltage Engineer – (2) two meetings

 - RPR: Site & Building – (0) zero meetings
 Note: RPR's on-site for zero as assumed meetings will be on separate day than RPR is on-site for Task 3.
- Remote: The following disciplines / individuals will participate via ZOOM or another virtual program from the Consultant's Design Team for the number of meeting indicated.
 - Project Manager – (42) forty-two meetings
 - Senior Project Architect – (21) twenty-one meetings
 - Civil Engineer – Airfield – (24) twenty-four meetings
 - Civil Engineer – Utility – (12) twelve meetings
 - Structural Engineer – (24) twenty-four meetings
 - Mechanical / Plumbing / Fire Protection Engineer – (24) eight meetings
 - Electrical / Fire Alarm Engineer – (24) twenty-four meetings
 - Low Voltage Engineer – (6) six meetings
 - RPR: Building – (56) fifty-six meetings
 - RPR: Site – (32) thirty-two meetings

The CMAR shall conduct the meetings, prepare agendas and provide the meeting minutes.

Task 1.5 Construction Progress Site Visits

Consultant's Design Team will conduct construction progress site visits as follows and a written observation report, documenting the findings of the site visit will be provided for each site visit. The number of trips averages to (1) one per month for the duration of the expected construction that each discipline will be actively involved.

- » Project Manager – (14) fourteen meetings
- » Senior Project Architect – (7) seven meetings
- » Civil Engineer – Airfield – (8) eight meetings
- » Civil Engineer – Utility – (4) four meetings
- » Structural Engineer – (8) eight meetings
- » Mechanical / Plumbing /
Fire Protection Engineer – (8) eight meetings
- » Electrical / Fire Alarm Engineer – (8) eight meetings
- » Low Voltage Engineer – (2) two meetings

Task 1.6 Project Revisions

The Consultant will prepare documentation to issue Field Instructions and Field Bulletins (as required by unforeseen existing / field conditions or as required by responses to RFI's / submittal reviews) with the approval of the Airport.

Consultant's Design Team will review Contingency Adjustment Requests and Change Order Requests generated from Field Instructions and Field Bulletins (required by unforeseen existing / field conditions) submitted by the CMAR and provide recommendation of acceptance to DOA or provide requests for revisions and/or clarifications of submitted documentation to DOA / CMAR.

Proposal is based on a maximum of (10) ten Field Instruction and/or Field Bulletin due to unforeseen conditions.

Owner directed changes that require additional design and documentation effort from the Consultant's Design Team will be handled through an amendment to the contract. No changes will be executed, and no work progressed associated with those changes without prior approval from the Airport.

Task 1.7 Request for Change Orders

Consultant's Design Team shall evaluate Contractor request for change orders and recommend to the DOA to either approve or disapprove the contractor's proposal.

The Consultant shall act as interpreter of the terms and conditions of the contract documents and judge of the performance thereunder by the parties thereto and make decisions on claims of the contractor relating to the execution and progress of the work and other matters and questions related thereto.

Proposal is based on a maximum of (10) ten building and (5) five site RCO's.

Task 1.8 Substantial Completion Observation and Punchlist

The Consultant's Design Team shall perform, together with the Airport's authorized representative(s), a substantial completion observation of the project at each phase of the Project to determine if the project has been completed in accordance with the contract documents so that the Consultant may recommend approval to Airport if applicable, in writing, the issuance of a Certificate of Substantial Completion for each phase (ie Partial Certificate of Substantial Completion). The Consultant's Design Team shall prepare a punchlist of items that must be completed or that are deficient. The CMAR shall submit phase punchlist to the Consultant prior to observation. There are anticipated to be (3) three to the project for the building and (2) two for the site.

The following disciplines/individuals will be present from the Consultant's Design Team at each Phase's Substantial Completion Observation:

- » Senior Project Architect – (3)
- » Project Architect – Effort captured by Building RPR in Task 3.1
- » Civil Engineer – Airfield – (2)
- » Civil Engineer – Utility – (2)
- » Structural Engineer – (2)
- » Mechanical / Plumbing / Fire Protection Engineer – (3)
- » Electrical / Fire Alarm Engineer – (3)
- » Low Voltage Engineer – (2)

Task 1.9 Final Observation

The Consultant's Design Team shall perform, together with the Airport's authorized representative(s), a final observation of the project. The Consultant confirm acceptable completion of punchlist of Task 1.8, and if the CMAR has fulfilled all obligations thereunder so that the Consultant may recommend approval to Airport final payment to the CMAR for each phase. There are anticipated to be (3) three phases to the project for the building and (2) two for the site.

The following disciplines/individuals will be present from the Consultant's Design Team at each Final Observation:

- » Project Manager – (3)
- » Project Architect – Effort captured by Building RPR in Task 3.1
- » Civil Engineer – Airfield – (2)
- » Civil Engineer – Utility – (2)
- » Mechanical / Plumbing / Fire Protection Engineer – (3)

- » Electrical / Fire Alarm Engineer – (3)

Task 1.10 Material Testing - Site

The Consultant's Design Team shall perform Quality Assurance (QA) material testing services in accordance with the Project Manual and be completed by Tierra South Florida. Reports will be provided to Owner and Contractor.

Task 1.11 Threshold Inspection

TSF shall perform Threshold Inspection services in accordance with the Threshold Inspection Plan included on the Construction Documents. All elements will be inspected for compliance with the reference drawings and threshold inspection plan.

The following individuals will participate via ZOOM at (1) one threshold kickoff meeting:

- » Project Manager
- » Structural Engineer
- » Threshold Inspector
- » Contractor

Inspections by the Threshold Inspector will be performed on an as needed basis and coordinated with the progress of construction. A conformance / non-conformance log will be performed and updated on a monthly basis. An inspection report will be provided for each site inspection. Additionally, a monthly report will be submitted to the authority having jurisdiction and Owner. Report will be a summary of the daily reports and the material testing reporting.

Threshold Inspection will be completed by TSF and includes (12) coordination meetings with the Consultant's Design Team Structural Engineer (remote via Zoom) that averages (1) one hour each.

The Structural Engineer will review threshold inspection reports.

Task 1.12 Short Circuit, Device Coordination & Arc Flash Analysis

Consultant's Electrical Engineer will update the existing Short Circuit, Device Coordination & Arc Flash Study pertaining to the electrical equipment added, removed and/or modified as part of the Project. The scope shall include

- » Up-dating the existing power system model in SKM Power Tools for Windows for the modifications to the electrical distribution systems.
- » Perform Short Circuit, Device Coordination and Arc Flash Calculations using SKM.

- » Review and evaluate device settings on approximately 100 circuit breakers/relays. Replace existing and/or create new Time Current Curves (TCC) for approximately 50 devices.
- » Update one-lines, written report and tabular data.
- » Develop new Arc Flash labels and replace the arc flash labels (approximately 580 labels) impacted by the Switchgear Replacement.
- » Modify circuit breaker and relay settings for new and existing equipment as required by the study.

Task 1.13 Pay Application Reviews

The Consultant shall review CMAR applications for payment and supporting data, review the amount owed and recommend approve in writing all payments to CMAR in accordance with the contract documents for up to (16) sixteen payment applications.

The following disciplines/individuals will be review each Pay Application and base recommendation on most recent site visit:

- » Project Manager
- » RPR – Site
- » RPR – Building (UON) & Building (Electrical)

Task 1.14 Project Management

Consultant will oversee scheduling, resource allocation, monitoring, oversight, direction, and control for all aspects of the Consultant's Design Team efforts including assembly and coordination of all documentation.

The Consultant will issue monthly progress reports with each invoice to the Airport project manager during this portion of the project.

Task 1.15 Shutdown Coordination Efforts

The Consultant shall participate via ZOOM or another virtual program for (32) thirty-two shutdown coordination meetings with each meeting assumed to last (1) one hour. The CMAR will prepare the agenda and meeting minutes, and distribute the minutes to appropriate parties.

The following disciplines/individuals will participate remotely from the Consultant's Design Team:

- » Project Manager
- » Electrical Engineer

TASK 2 PROJECT CLOSEOUT

Project closeout includes the preparation of the record documents, final BIM models, and final invoicing.

Task 2.1 Record Documents

The Consultant shall obtain red-line as-built drawings from Construction Contractor and prepare "Record Drawings", which shall become the property of the Airport corrected to show significant changes made in the work during the construction of the project. Such corrections shall be the "as-built" prints, drawings, field sketches and other data furnished to the Consultant by the Airport and the contractor, and any amendments issued during construction.

- » Electronic updated drawings (.pdf)
- » Electronic updated specifications (.pdf)
- » Electronic updated drawings (CAD)
- » Revit model (L300)

Task 2.2 Warranty Period Inspection

The Consultant shall conduct an on-site observation of the Project prior to the expiration of any electrical and mechanical warranty period and advise the Owner (via report) of recommended action, if any, to be taken under the terms of any warranty. The project will include an (11) eleven-month electrical and mechanical equipment warranty inspection for each phase of the project. There are anticipated to be (2) two phases to the project.

The following disciplines/individuals will be present from the Consultant's Design Team to complete the warranty inspections:

- » Electrical / Fire Alarm Engineer – (2)
- » Mechanical / Plumbing / Fire Protection Engineer – (2)

Task 2.3 Utilities Final Certification

The Consultant's Design Team will prepare final certification to all appropriate permitting agencies utilizing record drawings for the design from the survey information supplied by the contractor and be completed by Keith.

Task 2.4 Project Management and Discipline Coordination

Consultant will oversee scheduling, resource allocation, monitoring, oversight, direction, and control for all aspects of the team's efforts including assembly and coordination of all documentation.

The Consultant will issue monthly progress reports with each invoice to the Airport project manager during this portion of the project.

TASK 3 PARTIAL RESIDENT PROJECT REPRESENTATIVE (RPR) SERVICES

Task 3.1 Partial RPR Services – Building (UON)

The Consultant shall provide part-time Building RPR services for the project that will consist of on-site presence and observation for (1) one day per week for (14) fourteen months. The RPR will observe the on-site construction to confirm the work is in compliance with the contract documents and is progressing according to the construction schedule. The RPR will provide a weekly observation report identifying the progress of the construction and any deficiencies or discrepancies observed. The RPR will attend the construction progress meetings noted above as well as coordinate with other discipline team members for support during site visits. The Building RPR will be provided by RS&H, Inc. and assumes an effort of (12) twelve hours per week for (14) fourteen months for site inspection, reporting, and meetings. RPR is assumed to be Project Architect.

Task 3.2 Partial RPR Services - Site

The Consultant shall provide part-time Site RPR services for the project that will consist of on-site presence and observation for (3) three days per week for (14) fourteen months. The RPR will observe the on-site construction to confirm the work is in compliance with the contract documents and is progressing according to the construction schedule. The RPR will provide a weekly observation report identifying the progress of the construction and any deficiencies or discrepancies observed. The RPR will attend the construction progress meetings noted above as well as coordinate with other discipline team members for support during site visits. The Site RPR will be provided by Keith and assumes an effort of (28) twenty-eight hours per week for (14) fourteen months for site inspection, reporting, and meetings.

Task 3.3 Partial RPR Services – Building (Electrical)

The Consultant shall provide part-time Building (Electrical) RPR services for the project that will consist of on-site presence and observation for (5) five days per week assuming (2) two hours per visit for (14) fourteen months. The Electrical RPR will observe the on-site construction to confirm the work is in compliance with the contract documents and is progressing according to the construction schedule. The Electrical RPR will provide a weekly observation report identifying the progress of the construction and any deficiencies or discrepancies observed. The Electrical RPR will be provided by Quantum and assumes an effort of (10) ten hours per week for (14) fourteen months for site inspection and reporting.

III MEETINGS AND PRESENTATIONS

The following meetings and presentations will be attended as part of this proposal:

| Task | Presentation / Meeting / Site Visit | Total Meetings | Attendance In-Person | Remote Attendance |
|------|---|----------------|----------------------|-------------------|
| 1.1 | Pre-Construction Conference | 1 | X | X |
| 1.3 | Witness Factory Testing | 1 | - | X |
| 1.4 | Construction Progress Meetings: Pre-Mobilization | 4 | - | X |
| 1.4 | Construction Progress Meetings: Post Mobilization | 56 | X | X |
| 1.5 | Construction Progress Site Visits | 14 | X | - |
| 1.8 | Substantial Completion Observation and Punchlist | 5 | X | - |
| 1.9 | Final Observation | 5 | X | - |
| 1.11 | Threshold Inspection | TBD | X | - |
| 2.2 | Warranty Period Inspection | 5 | X | - |
| 3.1 | Partial RPR Services | See above | | |

IV DELIVERABLES

The following deliverables will be submitted as part of this proposal:

| Task # | Title | Information Included | Format |
|-----------|--|---|------------------|
| 1.5 | Construction Progress Site Visits | Observation Reports | TBD |
| 1.6 | Project Revisions | Recommendations / Comments on CAR's / COR's | TBD |
| 1.7 | Request for Change Orders | Recommendations / Comments on RCO's | TBD |
| 1.8 | Substantial Completion Observation and Punchlist | Punchlist | TBD |
| 1.9 | Final Observation | Recommendation of Phase | TBD |
| 1.10 | Material Testing - Site | Reports | TBD |
| 1.11 | Threshold Inspection | Logs, Inspection Reports, Monthly Report | TBD |
| 1.12 | Short Circuit, Device Coordination & Arch Flash Analysis | Report / Data | TBD |
| 1.13 | Pay Application Reviews | Recommendation of Application | TBD |
| 1.14 | Project Management | Monthly progress reports | TBD |
| 2.1 | Record Documents | Drawings and Project Manual | .pdf, CAD, Revit |
| 2.2 | Warranty Period Inspection | Report | TBD |
| 2.3 | Project Management | Monthly progress reports | TBD |
| 3.1 / 3.2 | Partial RPR Services | Weekly Report | TBD |

V PROPOSED PROJECT SCHEDULE

See Attachment A. Schedule is provided by CMAR.

VI ASSUMPTIONS AND EXCLUSIONS

The following assumptions have been made for this Scope of Work:

- » CMAR will provide punchlist to Consultant at each phase prior to Substantial Completion site visit
- » The CMAR shall conduct the meetings, prepare agendas and provide the meeting minutes.
- » Contractor will provide field mark-ups in electronic format for the completion of Record Documents.
- » Site Observations and RPR on-site presence will occur during the following period: Monday through Friday 8:00am to 5:00pm and while the contractor is on-site.
- » Task 1.13 limited to (1) one pay app review and (1) re-review per pay app.

The following items are excluded from this Scope of Work unless otherwise noted:

- » Fees associated with permitting
- » Phase 5: Construction Administration Services
 - Submittal reviews beyond two (2)
 - Commissioning of fixtures and equipment
- » Construction Progress Site Visits other than listed herein
- » RS&H will only perform services/work related in any way to PFAS chemicals or substances possibly containing PFAS chemicals (including but not limited to sampling, handling and remediating) to the extent the Palm Beach County Department of Airports specifically directs, in writing, RS&H to perform such services/work, and RS&H shall not be liable for the nonperformance of such services/work.

VII PROFESSIONAL SERVICES FEE AND FEE TYPE

The Consultant will provide the above referenced services for a Fixed Lump Sum Fee as shown below. See Attachment B for a breakdown of costs.

| | |
|------------------|--------------|
| Tasks 1, 2 & 3 = | \$686,186.80 |
|------------------|--------------|

The Consultant will provide the above referenced services for a Maximum Not-to-Exceed Fee as shown below. See Attachment B for a breakdown of costs.

| | |
|------------------|--------------|
| Tasks 1, 2 & 3 = | \$423,296.00 |
|------------------|--------------|

Total Fee as follows:

| | |
|--------------------------------|--------------|
| Lump Sum Fee (Task 1, 2 & 3) = | \$686,186.80 |
|--------------------------------|--------------|

| | |
|--|--------------|
| Maximum Fee, Not-to-Exceed (Task 1, 2 & 3) = | \$423,296.00 |
|--|--------------|

| | |
|----------------------------|-----------------------|
| Total Project Fee = | \$1,109,482.80 |
|----------------------------|-----------------------|

Should scope items/activities/efforts/durations be modified at the request of the Airport or need to be adjusted based on construction scheduling, the Consultant's Design Team will need to modify the fee to accommodate the changes. Such changes will be compensated through an amendment (through Additional Services requested by the Consultant) to the Task Order or similar vehicle. Effort, fee, and schedule adjustments resulting from a change in scope will be assessed and approved by the Airport prior to the execution of the change.

ATTACHMENT A: CMAR GMP SCHEDULE

| | | Orig Dur | Start | Finish | 2023 | | | | | | | | | | | | 2024 | | | | | | | | | | | | 2025 | | | | | | | |
|------------------------------------|--|-----------|------------------|------------------|------|-----|-----|-----|-----|-----|-----|-----|-----|-----|-----|-----|------|--|-----|-----|-----|-----|-----|-----|-----|-----|-----|-----|------|-----|-----|-----|-----|-----|--|--|
| | | | | | Nov | Dec | Jan | Feb | Mar | Apr | May | Jun | Jul | Aug | Sep | Oct | Nov | Dec | Jan | Feb | Mar | Apr | May | Jun | Jul | Aug | Sep | Oct | Nov | Dec | Jan | Feb | Mar | Apr | | |
| A5530 | Hang Drywall Ceilings - Women Restroom | 2 | 04-Oct-23 | 05-Oct-23 | | | | | | | | | | | | | ■ | Hang Drywall Ceilings - Women Restroom | | | | | | | | | | | | | | | | | | |
| A5540 | Tape & Finish Ceilings - Women Restroom | 4 | 06-Oct-23 | 11-Oct-23 | | | | | | | | | | | | | ■ | Tape & Finish Ceilings - Women Restroom | | | | | | | | | | | | | | | | | | |
| A5550 | In-Wall Inspections - Women Restroom | 1 | 12-Oct-23 | 12-Oct-23 | | | | | | | | | | | | | ■ | In-Wall Inspections - Women Restroom | | | | | | | | | | | | | | | | | | |
| A5560 | Hang Cement Board Walls - Women Restroom | 3 | 13-Oct-23 | 17-Oct-23 | | | | | | | | | | | | | ■ | Hang Cement Board Walls - Women Restroom | | | | | | | | | | | | | | | | | | |
| A5570 | Hang Drywall Walls - Women Restroom | 4 | 18-Oct-23 | 23-Oct-23 | | | | | | | | | | | | | ■ | Hang Drywall Walls - Women Restroom | | | | | | | | | | | | | | | | | | |
| A5580 | Ceramic Tile Walls - Women Restroom | 7 | 24-Oct-23 | 01-Nov-23 | | | | | | | | | | | | | ■ | Ceramic Tile Walls - Women Restroom | | | | | | | | | | | | | | | | | | |
| A5590 | Install Light Fixtures - Women Restroom | 3 | 02-Nov-23 | 06-Nov-23 | | | | | | | | | | | | | ■ | Install Light Fixtures - Women Restroom | | | | | | | | | | | | | | | | | | |
| A5600 | Install Sprinkler Heads - Women Restroom | 1 | 07-Nov-23 | 07-Nov-23 | | | | | | | | | | | | | ■ | Install Sprinkler Heads - Women Restroom | | | | | | | | | | | | | | | | | | |
| A5610 | Install Grilles, Registers, Diffusers - Women Restroom | 1 | 08-Nov-23 | 08-Nov-23 | | | | | | | | | | | | | ■ | Install Grilles, Registers, Diffusers - Women Restroom | | | | | | | | | | | | | | | | | | |
| A5620 | Install Millwork - Women Restroom | 3 | 09-Nov-23 | 13-Nov-23 | | | | | | | | | | | | | ■ | Install Millwork - Women Restroom | | | | | | | | | | | | | | | | | | |
| A5630 | Paint Ceilings - Women Restroom | 2 | 14-Nov-23 | 15-Nov-23 | | | | | | | | | | | | | ■ | Paint Ceilings - Women Restroom | | | | | | | | | | | | | | | | | | |
| A5640 | Ceramic Tile Floors - Women Restroom | 5 | 16-Nov-23 | 22-Nov-23 | | | | | | | | | | | | | ■ | Ceramic Tile Floors - Women Restroom | | | | | | | | | | | | | | | | | | |
| A5650 | Paint Walls - Women Restroom | 2 | 27-Nov-23 | 28-Nov-23 | | | | | | | | | | | | | ■ | Paint Walls - Women Restroom | | | | | | | | | | | | | | | | | | |
| A5660 | Install Countertops - Women Restroom | 2 | 29-Nov-23 | 30-Nov-23 | | | | | | | | | | | | | ■ | Install Countertops - Women Restroom | | | | | | | | | | | | | | | | | | |
| A5670 | Install Plumbing Fixtures - Women Restroom | 3 | 01-Dec-23 | 05-Dec-23 | | | | | | | | | | | | | ■ | Install Plumbing Fixtures - Women Restroom | | | | | | | | | | | | | | | | | | |
| A5680 | Install Doors & Hardware - Women Restroom | 1 | 06-Dec-23 | 06-Dec-23 | | | | | | | | | | | | | ■ | Install Doors & Hardware - Women Restroom | | | | | | | | | | | | | | | | | | |
| A5690 | Install Fire Alarm Devices - Women Restroom | 1 | 07-Dec-23 | 07-Dec-23 | | | | | | | | | | | | | ■ | Install Fire Alarm Devices - Women Restroom | | | | | | | | | | | | | | | | | | |
| A5700 | Install Electrical Trim-Out - Women Restroom | 2 | 08-Dec-23 | 11-Dec-23 | | | | | | | | | | | | | ■ | Install Electrical Trim-Out - Women Restroom | | | | | | | | | | | | | | | | | | |
| A5710 | Install Signage - Women Restroom | 1 | 12-Dec-23 | 12-Dec-23 | | | | | | | | | | | | | ■ | Install Signage - Women Restroom | | | | | | | | | | | | | | | | | | |
| A5720 | Install Sinks - Women Restroom | 2 | 13-Dec-23 | 14-Dec-23 | | | | | | | | | | | | | ■ | Install Sinks - Women Restroom | | | | | | | | | | | | | | | | | | |
| A5730 | Install Miscellaneous Specialties - Women Restroom | 2 | 15-Dec-23 | 18-Dec-23 | | | | | | | | | | | | | ■ | Install Miscellaneous Specialties - Women Restroom | | | | | | | | | | | | | | | | | | |
| A5740 | Install Toilet Partitions - Women Restroom | 2 | 19-Dec-23 | 20-Dec-23 | | | | | | | | | | | | | ■ | Install Toilet Partitions - Women Restroom | | | | | | | | | | | | | | | | | | |
| A5750 | Install Toilet Accessories - Women Restroom | 2 | 21-Dec-23 | 22-Dec-23 | | | | | | | | | | | | | ■ | Install Toilet Accessories - Women Restroom | | | | | | | | | | | | | | | | | | |
| A5760 | Punchlist Restrooms - Women Restroom | 3 | 26-Dec-23 | 28-Dec-23 | | | | | | | | | | | | | ■ | Punchlist Restrooms - Women Restroom | | | | | | | | | | | | | | | | | | |
| Testing & Commissioning | | 20 | 19-Dec-23 | 17-Jan-24 | | | | | | | | | | | | | | | | | | | | | | | | | | | | | | | | |
| A3570 | MEPF Testing & Commissioning - Package No. 1 | 10 | 19-Dec-23 | 03-Jan-24 | | | | | | | | | | | | | ■ | MEPF Testing & Commissioning - Package No. 1 | | | | | | | | | | | | | | | | | | |
| A3580 | Final Life Safety Testing - Package No. 1 | 10 | 04-Jan-24 | 17-Jan-24 | | | | | | | | | | | | | ■ | Final Life Safety Testing - Package No. 1 | | | | | | | | | | | | | | | | | | |



ATTACHMENT B: FEE BREAKDOWN

PALM BEACH COUNTY DEPARTMENT OF AIRPORTS
 Airport Facilities & Systems Planning, Design, Engineering and Construction Management Professional Services

RS&H, INC.
 Concourse B Expansion - Package 1: Construction Administration and Partial RPR Services

| Consultant | | | | |
|--------------------------------------|--------------------------------------|--------------|------------------------|----------------------|
| <u>Task</u> | <u>Description</u> | <u>Hours</u> | <u>Fee (Lump Sum)</u> | <u>Fee (NTE)</u> |
| 1 | Construction Administration Services | 1,841 | \$ 346,087.90 | \$ - |
| 2 | Project Closeout | 137 | \$ 20,485.24 | \$ - |
| 3 | Part Time RPR Services | 764 | \$ 112,285.08 | \$ - |
| Subtotal RS&H Labor Hours | | 2,742 | | |
| Subtotal RS&H Labor Fee | | | \$ 478,858.22 | \$ - |
| Subconsultants | | | | |
| | Keith - Task 1 & 2 | | \$ 75,977.00 | \$ - |
| | Keith - Task 3 | | \$ - | \$ 350,238.00 |
| | JLRD | | \$ 34,995.00 | \$ - |
| | Quantum | | \$ 96,356.58 | \$ - |
| | Tierra South Florida | | \$ - | \$ 17,175.00 |
| Subtotal Subconsultant Fee | | | \$ 207,328.58 | \$ 367,413.00 |
| Expenses | | | | |
| | RS&H | | | |
| | Travel (Task 1 & 2) | | \$ - | \$ 40,695.00 |
| | Travel (Task 3) | | \$ - | \$ 9,688.00 |
| | Other | | \$ - | \$ 3,000.00 |
| | Subconsultants | | | |
| | Keith | | \$ - | \$ 2,500.00 |
| Subtotal Expenses | | | \$ - | \$ 55,883.00 |
| Sub Total Project Fee | | | \$ 686,186.80 | \$ 423,296.00 |
| Total Project Fee | | | \$ 1,109,482.80 | |

Concourse B Expansion - Package 1: Construction Administration and Partial RPR Services

| Sub Consultant - Labor Effort by Major Task Item (Lump Sum) | | Task 1 | Task 2 | Task 3 | |
|---|--|--------------|-------------|---------------|----------------------|
| Keith | <i>Civil - Utilities</i> | \$ | 75,977.00 | \$ 350,238.00 | \$ 426,215.00 |
| JLRD | <i>Mechanical, Plumbing, Fire Protection</i> | \$ 32,565.00 | \$ 2,430.00 | \$ - | \$ 34,995.00 |
| Quantum | <i>Electrical, Fire Alarm</i> | \$ 91,106.64 | \$ 5,249.94 | \$ - | \$ 96,356.58 |
| Tierra South Florida | <i>Material Testing / Threshold Inspection Testing</i> | \$ 17,175.00 | \$ - | \$ - | \$ 17,175.00 |
| SUB-TOTAL SUBCONSULTANTS (Labor) | | | | | \$ 574,741.58 |
| | | | | | |
| Sub Consultant - Reimbursable Expense (Not-To-Exceed) | | | | | |
| Keith | <i>Civil - Utilities</i> | | | | \$ 2,500.00 |
| SUB-TOTAL SUBCONSULTANTS (Expenses) | | | | | \$ 2,500.00 |
| | | | | | |
| Keith | <i>Civil - Utilities</i> | | | | \$ 428,715.00 |
| JLRD | <i>Mechanical, Plumbing, Fire Protection</i> | | | | \$ 34,995.00 |
| Quantum | <i>Electrical, Fire Alarm</i> | | | | \$ 96,356.58 |
| Tierra South Florida | <i>Material Testing / Threshold Inspection Testing</i> | | | | \$ 17,175.00 |
| TOTAL SUBCONSULTANTS | | | | | \$ 577,241.58 |

Concourse B Expansion - Package 1: Construction Administration and Partial RPR Services

| EXPENSES | | | | | | | | | |
|--------------------------------|--|----------------|-----------------|---------------|----------------|------------|----------------|-----------------|--------------------|
| TRAVEL | | | | | | | | | |
| Task | Description | # Trips | # People | # Days | Airfare | Car | Lodging | Per Diem | |
| 1.1 | Pre-Construction Conference | | | | \$600 | \$80 | \$200 | \$93 | |
| 1.5 | Construction Progress Site Visits | | | | \$5,400 | \$6,320 | \$8,000 | \$7,347 | \$2,784.00 |
| 1.8 | Substantial Completion Observation and Punchlist | | | | \$3,000 | \$1,680 | \$2,400 | \$1,953 | \$27,067.00 |
| 1.9 | Final Observation | | | | | | | | |
| | PM | 3 | 1 | 2 | \$0 | \$480 | \$600 | \$558 | \$1,638.00 |
| 3.1 | Partial RPR Services - Building | | | | | | | | |
| | RPR | 1 | 1 | 1 | \$0 | \$80 | \$0 | \$93 | \$173.00 |
| | RPR | 56 | 1 | 1 | \$0 | \$4,480 | \$0 | \$5,208 | \$9,688.00 |
| SUBTOTAL TRAVEL | | | | | | | | | \$50,383.00 |
| OTHER EXPENSES | | | | | | | | | |
| | Parking | | | | \$1,000 | | | | \$1,000.00 |
| | Badging | | | | \$1,000 | | | | \$1,000.00 |
| | Others | | | | \$1,000 | | | | \$1,000.00 |
| SUBTOTAL OTHER EXPENSES | | | | | | | | | \$3,000.00 |
| TOTAL EXPENSES | | | | | | | | | \$53,383.00 |

ATTACHMENT C: SUBCONSULTANT PROPOSALS



JOHNSON, LEVINSON,
RAGAN, DAVILA, INC.
CONSULTING ENGINEERS

1450 Centrepark Boulevard, Suite 350
West Palm Beach, FL 33401
(561) 689-2303 • (561) 689-2302 Fax
www.jlrdinc.com

AUTHORIZATION FOR ENGINEERING SERVICES

CLIENT: Mr. Aaron Jackson, P. E.
RS&H, Inc.

PROJECT: PBI Concourse B Expansion - Task I-22-PBI-R-031
RE: Package 1 – Construction Administration

DATE: October 5, 2022

JLRD PROJECT NO.: 120135

In accordance with the contract for the above referenced project, JLRD, Inc. is hereby authorized to perform the Construction Administration Services requested by RS&H, Inc. (the Client) as outlined below at a duration of 16 months:

Task I-22-PBI-R-031 Scope:

Task 1.1 Pre-Construction Conference

JLRD shall attend (1) pre-construction conference meeting at the Airport.

Task 1.2 RFIs / Substitutions / Submittal Review

JLRD will respond to RFIs, substitution requests, shop drawings, and other submissions furnished by the CMAR. Building RFIs, Building Submittals, and Building Re-Submittals are anticipated to be included in this Task.

Task 1.4 Construction Progress Meetings

JLRD shall participate in bi-weekly construction coordination meetings until the Contractor has mobilized, approximately 2 months at 1 hour per meeting. Pre-Mobilization, up to 4 meetings. When the Contractor is mobilized, meetings shall be weekly. Post-Mobilization, up to 8 meetings on-site and up to 24 meetings remotely, at 1 hour each.

Mr. Aaron Jackson, P. E.
RE: PBI Concourse B Expansion - Task I-22-PBI-R-031
Date: October 5, 2022

Task 1.5 Construction Progress Site Visits

JLRD shall participate in monthly construction progress site visits to be accompanied by a field observation report. Maximum of 8 site visits including Post-Mobilization.

Task 1.6 Project Revisions

JLRD shall participate in the preparation of documentation for Field Instructions and Field Bulletins for unforeseen conditions, as approved by the Owner. Review Contingency Adjustment Requests and Change Order Requests and provide recommendation of acceptance to Owner. Maximum of 10 Field Instruction or Field Bulletin submissions.

Task 1.7 Request for Change Orders

JLRD shall participate in evaluation of Contractor request for change orders and provide recommendations for approval or disapproval to the Owner. Maximum of 10 change order requests.

Task 1.8 Substantial Completion Observation and Punchlist

JLRD shall participate in observation of the project at each phase of project completion and provide punch list for resolution prior to recommended approval to the airport of substantial completion. A maximum of 5 observations and punch list documents are included.

Task 1.9 Final Observation

JLRD shall support the Project Manager and Project Architect as required for the final observation walk-through. One site visit.

Task 2.1 Record Documents

JLRD shall obtain red-line as-builts drawings from Contractor and prepare "Record Drawings", which will become property of the Owner. Included are updated drawings (PDF and DWG), updated specifications (PDF), and Revit model (L300).

Task 2.2 Warranty Period Inspection

JLRD shall conduct an on-sit mechanical warranty inspection for each phase of the project at the 11-month installation date. Maximum of 5 construction phases for mechanical inspection.



JOHNSON, LEVINSON,
RAGAN, DAVILA, INC.
CONSULTING ENGINEERS

1450 Centrepark Boulevard, Suite 350
West Palm Beach, FL 33401
(561) 689-2303 • (561) 689-2302 Fax
www.jlrdinc.com

EXCLUSIONS:

1. Witness factory testing. (Task 1.3)
2. Owner directed design changes that require additional engineering and documentation. (Task 1.6)
3. Materials Testing – Site (Task 1.10)
4. Threshold Inspection (Task 1.11)
5. Short Circuit, Device Coordination and Arch Flash Analysis (Task 1.12)
6. Pay application and supporting data review. (Task 1.13)
7. Project Management (Task 1.14)
8. Project Management and Discipline Coordination (Task 2.3)
9. RPR (Resident Partial Representative) Services (Task 3)
10. Commissioning of Fixtures and Equipment

FEES:

1. The above-mentioned scope shall be provided based upon a lump-sum fee amount as follows:

- *Thirty Four Thousand Nine Hundred Ninety-Five Dollars (\$34,995.00)*

TIME OF PERFORMANCE:

1. Design services will be completed with due and reasonable diligence after receipt of this executed authorization.

Accepted By:

Date:

| Task # | Description | HOURS | | | | | | | | HOURS | TOTAL COST (\$) | |
|----------------------------|---|-----------|------------------|----------|-----------------|----------|--------------------|--------------|-----------|-------|-----------------|-----------------|
| | | Principal | Project Engineer | Engineer | Senior Designer | Designer | Construction Admin | Draftsperson | Clerical | | | |
| | | \$200.00 | \$130.00 | \$85.00 | \$120.00 | \$75.00 | \$105.00 | \$55.00 | \$65.00 | | | |
| 1.1 | Pre-Construction Conference | - | - | - | 6 | - | - | - | - | - | 6 | \$720 |
| | HVAC | | | | 2 | | | | | | | |
| | Plumbing | | | | 2 | | | | | | | |
| | Fire Protection | | | | 2 | | | | | | | |
| 1.2 | RFIs / Submittals / Submittal Review (# TBD) | - | - | - | - | - | 48 | 12 | 12 | - | 72 | \$6,480 |
| | HVAC | | | | | | 16 | 4 | 4 | | | |
| | Plumbing | | | | | | 16 | 4 | 4 | | | |
| | Fire Protection | | | | | | 16 | 4 | 4 | | | |
| 1.4 | Construction Progress Meetings (8 on-site, 24 remote) | - | - | - | - | - | 80 | - | - | - | 80 | \$8,400 |
| | HVAC | | | | | | 40 | | | | | |
| | Plumbing | | | | | | 20 | | | | | |
| | Fire Protection | | | | | | 20 | | | | | |
| 1.5 | Construction Progress Site-Visits and Reports (8 visits) | - | - | - | - | - | 20 | - | 6 | - | 26 | \$2,490 |
| | HVAC | | | | | | 10 | | 2 | | | |
| | Plumbing | | | | | | 5 | | 2 | | | |
| | Fire Protection | | | | | | 5 | | 2 | | | |
| 1.6 | Project Revisions (10 Bulletins) | - | - | - | 60 | - | - | 30 | - | - | 90 | \$8,850 |
| | HVAC | | | | 20 | | | 10 | | | | |
| | Plumbing | | | | 20 | | | 10 | | | | |
| | Fire Protection | | | | 20 | | | 10 | | | | |
| 1.7 | Request for Change Orders (10 COs) | - | - | - | - | - | 15 | - | - | - | 15 | \$1,575 |
| | HVAC | | | | | | 5 | | | | | |
| | Plumbing | | | | | | 5 | | | | | |
| | Fire Protection | | | | | | 5 | | | | | |
| 1.8 | Substantial Completion Observation and Punchlist (5 visits) | - | - | - | - | - | 20 | - | 9 | - | 29 | \$2,685 |
| | HVAC | | | | | | 10 | | 3 | | | |
| | Plumbing | | | | | | 5 | | 3 | | | |
| | Fire Protection | | | | | | 5 | | 3 | | | |
| 1.9 | Final Observation (1 visit) | - | - | - | - | - | 3 | - | - | - | 3 | \$315 |
| | HVAC | | | | | | 1 | | | | | |
| | Plumbing | | | | | | 1 | | | | | |
| | Fire Protection | | | | | | 1 | | | | | |
| 2.1 | Record Documents (DWG, PDF, RVT) | - | - | - | 6 | - | - | 12 | - | - | 18 | \$1,380 |
| | HVAC | | | | 2 | | | 4 | | | | |
| | Plumbing | | | | 2 | | | 4 | | | | |
| | Fire Protection | | | | 2 | | | 4 | | | | |
| 2.2 | Warranty Period Inspection (5 visits) | - | - | - | - | - | 10 | - | - | - | 10 | \$1,050 |
| | HVAC | | | | | | 10 | | | | 10 | \$1,050 |
| | | | | | | | | | | | - | \$0 |
| | Task Total | - | - | - | 144 | - | 392 | 108 | 54 | - | 359 | \$34,995 |
| TOTAL FOR ALL TASKS | | | | | | | | | | | | |
| | | - | - | - | 144 | - | 392 | 108 | 54 | - | 359 | \$34,995 |



AGREEMENT FOR PROFESSIONAL SERVICES

January 24, 2023

Aaron R Jackson, P.E.
RS&H, Inc.
3125 W. Commercial Blvd. Suite 130
Fort Lauderdale, FL 33309
Phone: (954) 236 - 7364
E-mail: Aaron.Jackson@rsandh.com

Project Name: PBI Concourse B Expansion –
Package 1 Construction Admin & RPR
KEITH Project Number: 10216.13

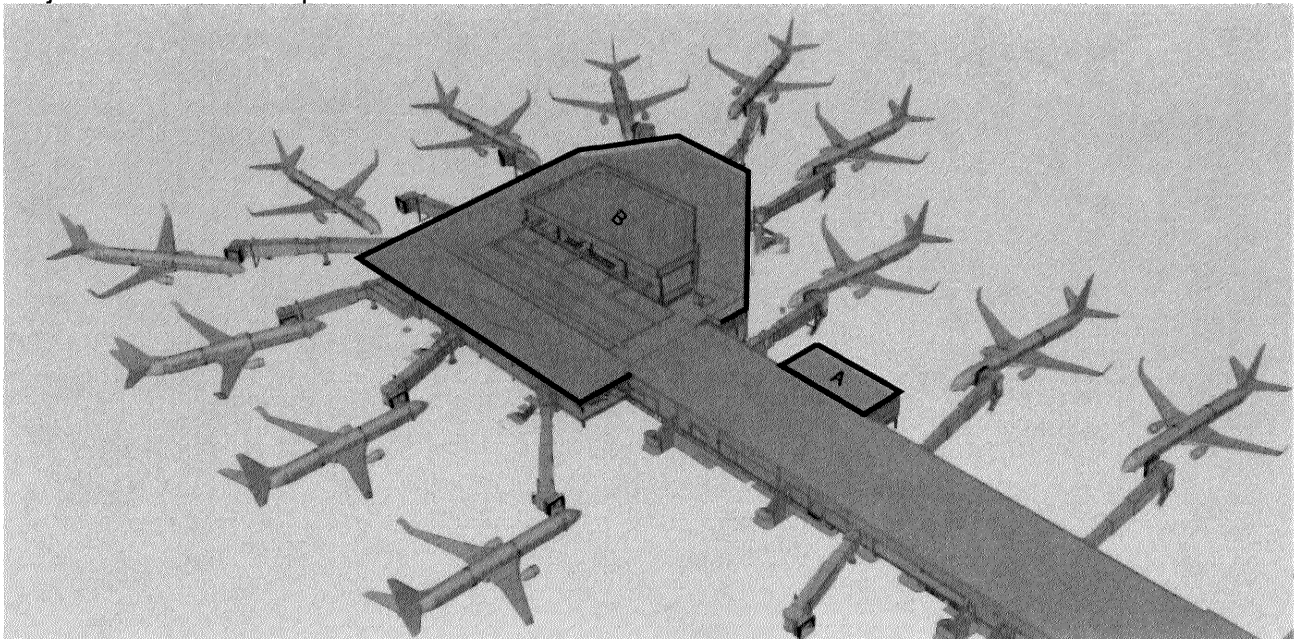
Dear Mr. Jackson:

In accordance with your request and subsequent discussions between members of our association and yourself, this agreement between Keith and Associates, Inc. dba KEITH (CONSULTANT) and RS&H ("CLIENT") for professional services is submitted for your consideration and approval. The purpose of this Agreement is to outline the scope of services recommended by KEITH and accepted by CLIENT, and to establish the contractual conditions between KEITH and CLIENT with respect to the proposed services.

PROJECT UNDERSTANDING

The CLIENT has requested that KEITH provide construction administration for KEITH's Civil (Water/Sewer) services, as well as RPR services for all Civil Site elements. KEITH will provide these services for Package 1 only under this proposal, which includes Civil Site limits in relation to the building bump out area A shown in Site Map below.

Project Areas – Site Map



www.KEITHteam.com

PROJECT SCOPE

KEITH will provide the below services to assist the CLIENT and Project Team.

Survey

- ALTA/NSPS
- Topography
- Boundary
- Tree
- Sketch and Description
- Construction Layout
- Construction As-Built
- Other_____

SUE

- Horizontal Designation
- Location Services
- Utility Mapping
- Records Research
- Other_____

Planning Services

- Due Diligence
- Platting
- Rezoning
- Conditional Use Permit
- Right of Way Vacation
- Site Plan Processing and Coordination
- Site Plan / Project Coordination
- Other_____

Civil Engineering Services

- Paving, Grading and Drainage
- Water Distribution and Sanitary Sewer
- Erosion Control Plan
- Other_____

Transportation Engineering Services

- Major Roadway
- Minor Roadway
- Drainage
- Maintenance of Traffic Plans
- Quality Control
- Other_____

Traffic Engineering Services

- Traffic Impact Study
- Traffic Impact Statement
- Parking Study
- Pavement Marking and Signage
- Signalization
- Roadway Lighting
- Other_____

Landscape Architecture Services

- Hardscape and Paving
- Fine Grading
- Landscape
- Irrigation
- Site Lighting
- Pools or Water Features
- Specialty Features
- Tree Inventory & Analysis
- Other_____

Construction/Program Management Services

- Permitting
- Bidding Assistance
- Building Permit Coordination
- Construction Observation
- Construction Certification
- Civil Site RPR

It is assumed adequate service points already exist on-site or at the abutting site boundary or in the adjacent public right-of-way. No sewage pump station or offsite improvements or extensions, other than service connections, are anticipated under this Proposal.



DESCRIPTION OF SERVICES AND DELIVERABLES

CONSTRUCTION / PROJECT MANAGEMENT SERVICES

Task 801 Construction Observation for Engineering Certification

KEITH shall provide construction engineering services in order to ensure the integrity of the design intent and certify to the CLIENT and other jurisdictional agencies that the construction work for the Civil (Water and Sewer) design has been completed in substantial compliance with the approved documents and permits. Any revisions or deviations to original construction documents, including but not limited to, substitutions and/or unforeseen conditions may impact schedule and may require additional fees. Services included are described as follows and are anticipated to take the timeframe outlined in the August 2022 schedule from the CMAR:

Shop Drawing Reviews

KEITH shall review shop drawings, samples, and calculations, which the selected contractor is required to submit for review in reference to the Civil Water and Sewer design. This review will only be for conformance with the design concept of the project and compliance with the information provided on the KEITH design drawings and specifications. Such review will not extend to methods, means, techniques, construction sequence(s) or procedures, or to safety precautions and related programs. KEITH shall also determine the acceptability, subject to CLIENT approval, of substitute materials and equipment proposed by contractors.

Periodic Site Visits and Construction Observation

KEITH shall visit the Project at intervals appropriate to the various stages of construction, as KEITH deems necessary to observe as an experienced and qualified design professional to review the progress and quality of the various aspects of the contractor's work. KEITH shall attend one (1) pre-construction meeting, four (4) pre-mobilization virtual meetings, twelve (12) post-mobilization virtual meetings for Utility Engineer, four (4) construction progress site visits, and thirty-two (32) virtual progress meetings for RPR. Re-tests and failed inspections will be invoiced on a time and material basis in accordance with our Professional Service Fee schedule (attached).

As-builts Review

KEITH will review the record drawings (as-builts) to ensure substantial conformance to the approved plans. KEITH will only review and reject any particular as-built plans set a maximum of two (2) times, any additional review will be considered additional services. The contractor will be expected to have the as-builts revised in accordance with all comments.

Final Inspections

KEITH shall participate, with the Jurisdictional Utility Agency, in a semi-final inspection for the purpose of determining if the project is substantially complete and participate in the preparation of a written "Punch List" of all incomplete, defective or deficient items. Upon notice from the CLIENT, participate in a final inspection together with the Jurisdictional Utility Agency and contractor representatives to assure that all "Punch List" items are complete, and the work is indeed completed in accordance with all contract documents. Upon completion of the final inspection, certify, in writing, that the work in-place is acceptable, subject to any conditions therein expressed. This service is anticipated to be two (2) inspections, additional inspection(s) will be invoiced based on our Professional Service Fee schedule.

Task 802 Construction Engineering

Issue Clarifications

KEITH shall issue all instructions and revisions of the CLIENT to Contractor(s); issue necessary



January 24, 2023 / Page 4 of 5
10216.13 PBI Concourse B Expansion – Construction Admin. & RPR
RS&H

interpretations and clarifications of the contract documents; have authority, as the CLIENT'S representative to require special inspection or testing of the work; act as initial interpreter of the requirements of the contract documents and judge of the acceptability of the work there under, and make decisions on all claims of the CLIENT and contractor(s) relating to the acceptability of the work or the interpretation of the requirements of the contract documents pertaining to the execution and progress of the work.

Meetings and Conference calls

KEITH shall attend and or participate in project meetings and conference calls as previously noted. KEITH shall review requests for information prepared by the Contractor and respond accordingly to all parties. KEITH will prepare drawings supplemental information needed to address the contractor's request for information.

Final Certification

KEITH will prepare final certification to all appropriate permitting agencies utilizing record drawings for the design from the survey information supplied by the contractor, or by other means agreed to by both KEITH and CLIENT.

Note: It is the Contractor's responsibility to coordinate through KEITH the scheduling of testing, including hydrostatic pressure tests, bacteriological samples, and density tests. KEITH shall represent the CLIENT in performing periodic observation of construction as necessary to confirm construction is in accordance with the approved plans.

The Construction Engineering and Certification for the work is for an anticipated period of two (2) months beyond the construction completion date for certifications.

We anticipate the following items requiring as-built certification:

- Water System
- Sanitary Sewer System

Note: Construction-related surveying (stakeout, as-built plans, etc.) and testing (densities, concrete, LBR'S, etc.) services are not included in this Agreement.

Task 803 Civil Site RPR Construction Observation

Partial RPR Services - Site

KEITH shall provide part-time Site RPR services for the project that will consist of on-site presence and observation for (3) three days per week for (14) fourteen months. The RPR will observe the on-site construction to confirm the work is in compliance with the contract documents and is progressing according to the construction schedule. Consultant is not responsible for the means, methods, techniques, sequences or procedures of construction selected by the contractor(s) or the safety precautions and programs incident to the work of the contractor(s). The RPR will provide a weekly observation report identifying the progress of the construction and any deficiencies or discrepancies observed. The RPR will immediately make the contractor aware of any deficiencies observed and coordinate with the Contractor, and Engineer if need be, to resolve any deficient work. The RPR will coordinate with the QA testing company to layout testing locations, to ensure the required acceptance testing is performed and to verify that the testing results have met the requirements in the specifications. The RPR will review all progress as-builts to ensure they are within specification limits to proceed with subsequent work. The RPR will measure and track all civil related construction quantities and confer with



January 24, 2023 / Page 5 of 5
10216.13 PBI Concourse B Expansion – Construction Admin. & RPR
RS&H

the contractor weekly to agree on measured quantities. The RPR will attend the construction progress meetings noted above as well as coordinate with other discipline team members for support during site visits. The RPR will review the final as-builts and provide comments/observations to Engineer for final approval. At project completion, the RPR shall provide a certification to the best of their observations and review, that the project was constructed in accordance with the construction documents. This task assumes an effort of (33) thirty-three hours per week for (14) fourteen months for site inspection, reporting, and meetings.

SCHEDULE

CONSTRUCTION/PROGRAM MANAGEMENT SERVICES

| | |
|---|-------------------|
| Task 801 Construction Observation for Engineering Certification | Per CMAR Schedule |
| Task 802 Construction Engineering | Per CMAR Schedule |
| Task 803 Civil Site RPR Construction Observation | Per CMAR Schedule |

COMPENSATION

CONSTRUCTION/PROGRAM MANAGEMENT SERVICES

| | |
|---|----------------|
| Task 801 Construction Observation for Engineering Certification | \$32,471 |
| Task 802 Construction Engineering | \$43,506 |
| Task 803 Civil Site RPR Construction Observation | \$350,238 |
| <u>Reimbursables (including Parking and Printing as needed)</u> | <u>\$2,500</u> |

Total Fee **\$428,715**

The CLIENT is required to execute this Addendum and return it to the CONSULTANT prior to commencement of the additional services described herein. All items, terms, and conditions of the original Agreement (as amended to include the scope defined herein) remain unchanged and in full force and effect.

IN WITNESS WHEREOF, CONSULTANT and CLIENT have executed this agreement the day and year indicated below.

As to CONSULTANT
KEITH

As to CLIENT
RS&H

Signature: _____

Alex Lazowick

Print Name: _____

President

Title: _____

DATED: _____

DATED: _____



Engineering Inspired Design.



| | | | HOURS | | | | | HOURS | TOTAL COST (\$) |
|---|--|--|------------------------|---------------------|----------------------|--------------|-------------------|----------|--------------------|
| | | | Senior Project Manager | Project Manager III | Construction Manager | Engineer III | RPR Inspector III | | |
| Burdened hourly rate | | | \$294.66 | \$220.99 | \$191.53 | \$132.60 | \$162.01 | | |
| Construction / Project Management Services | | | | | | | | | |
| 801 | | Construction Observation for Engineering Certification | | | | | | - | |
| | | <i>Civil - Utility</i> | - | 104 | 8 | 60 | | 172 | \$32,471 |
| 802 | | Construction Engineering | | | | | | - | |
| | | <i>Civil - Utility</i> | 16 | 114 | 8 | 91 | | 229 | \$43,506 |
| 803 | | Civil Site RPR Construction Observation | | | | | | - | |
| | | <i>Civil - Site</i> | - | - | 120 | | 2,020 | 2,140 | \$350,238 |
| Task Total | | | 16 | 218 | 136 | 151 | 2,020 | - | 2,541 |
| Reimbursables (Including Parking and Printing as Needed) | | | | | | | | | \$2,500 |
| TOTAL FOR ALL TASKS AND REIMBURSABLES | | | 16 | 218 | 136 | 151 | 2,020 | - | 2,541 |

QUANTUM

Electrical Engineering, Inc.

October 18, 2022

RS&H, Inc.
Mr. Aaron Jackson, PE, LEED AP
Aviation Structural Engineer
10748 Deerwood Park Blvd South,
Jacksonville, FL 32256

Subject: Electrical Engineering Construction Administration (CA) Services Fee Proposal for the Palm Beach County Department of Airports (DOA) – Concourse B Package 1 CA Services. Includes Task 1 & 2 as reflected in RSH Scope of Services, Dated October 2022

Dear Aaron,

Quantum Electrical Engineering, Inc. (QUANTUM) is pleased to provide RS&H an electrical engineering Construction Administration (CA) services fee proposal for the Palm Beach International Airport Switchgear Replacement Concourse B Package 1 CA Services with an anticipated construction duration of 16 months from notice to proceed to substantial completion. The following tasks are included in our scope:

Task 1: Construction Administration Services

Task 1.1: Pre-Construction Conference

- Includes attendance at (1) pre-construction meeting.

Task 1.2: RFI/Substitutions/Submittal Review

- Includes requests for information reviews & approvals. Assumption of 20 RFIs
- Includes substitution request reviews & approvals.
- Includes electrical shop drawings submittals reviews & approvals. Assumption of 31 shop drawings.

Task 1.3: Witnessing Factory Testing

- Includes participation in up to 4 hours of factory testing via virtual program for Switchboard EBL and Transformer T-6.

Task 1.4: Construction Progress Meetings

- Includes attendance for up to 32 (1hr) progress construction meetings that will be attended as follows:
 - Attend 24 (1hr) progress construction meetings either virtually or via teleconference.
 - Attend 8 (1hr) on-site progress construction meetings.

Task 1.5: Construction Progress Site Visits

- Includes 8 (4 hours) on-site observation visits.
- Includes a written observation reports, documenting the findings of each site visit.

Palm Beach County
2755 Vista Parkway, Suite I-9
West Palm Beach, FL 33411
561.210.9224

www.QuantumElectricalEngineering.com

Broward County
5571 N. University Drive, Suite 101
Coral Springs, FL 33067
954.369.5810

Task 1.6: Project Revisions

- Includes minor plan alterations and revisions.

Task 1.7: Change Directives and Change Notices

- Includes change order reviews.

Task 1.8: Substantial Completion Observation and Punchlist

- Includes 5 site visits for substantial completion inspections (1 visit per phase) (5 phases).
- Development of electrical punch list per each substantial completion inspection.

Task 1.9 Final Observation

- Includes 5 site visits for final observation to verify completion of punch list (1 visit per phase) (5 phases).

Task 1.12: Short Circuit, Device Coordination & Arc Flash Analysis

- Up-dating the existing power system model in SKM Power Tools for Windows for the modifications to the electrical distribution systems.
- Perform Short Circuit, Device Coordination and Arc Flash Calculations using SKM.
- Review and evaluate device settings on approximately 100 circuit breakers/relays. Replace existing and/or create new Time Current Curves (TCC) for approximately 50 devices.
- Update one-lines, written report and tabular data.
- Develop new Arc Flash labels and replace the arc flash labels (approximately 580 labels) impacted by the Switchgear Replacement.
- Modify circuit breaker and relay settings for new and existing equipment as required by the study.

Task 1.15: Shutdown Coordination Efforts

- Includes attendance for up to 32 hours of shutdown coordination site visits and meetings that will be attended either virtually, teleconference or on-site.

Task 2: Project Closeout

Task 2.1: Record Documents

- Include review of Contractor "Red Line Plan Mark-ups."
- Includes development of record drawings and specifications based on Contractor "Red Line Plan Mark-ups."

Task 2.2: Warranty Period Inspection

- Includes 5 site visits for warranty period inspections (1 visit per phase) (5 phases).
- Development of electrical warranty discrepancy list per each inspection.

Exclusions and Assumptions

- QUANTUM shall provide one electronic set of record drawings in PDFs and AutoCAD and record specifications in PDF. RS&H shall provide all distribution and printing of all documents to DOA.

Page 3

Mr. Aaron Jackson, P.E.

Electrical Engineering CA Services Fee Proposal for the Concourse B Package 1

| | |
|---|---------------------|
| Our proposed Lump Sum Fee for Task 1 is: | \$ 91,106.64 |
| <u>Our proposed Lump Sum Fee for Task 2 is:</u> | <u>\$ 5,249.94</u> |
| Our proposed total Lump-Sum fee is: | \$ 96,356.58 |

(See Attachment for Breakdown)

Sincerely,



Amy Champagne-Baker, PE
President

Palm Beach County
2755 Vista Parkway, Suite I-9
West Palm Beach, FL 33411
561.210.9224

www.QuantumElectricalEngineering.com

Broward County
5571 N. University Drive, Suite 101
Coral Springs, FL 33067
954.369.5810

| PALM BEACH COUNTY DEPARTMENT OF AIRPORTS- Concourse B Package 1 - CA and RPR Services | | | | | | | | | | |
|---|---------------|--------------------|-------------------|-------------------|--------------------|-------------------|------------|----------|--------------------|--|
| QUANTUM ELECTRICAL ENGINEERING, INC. | | | | | | | | | | |
| SCOPE FEE SUMMARY | | | | | | | | | | |
| FEE PROPOSAL ELECTRICAL SERVICES TO RS&H 10/18/2022 | | | | | | | | | | |
| | Rate | \$161.54 | \$144.23 | \$138.46 | \$69.23 | \$132.69 | \$46.15 | | | |
| PHASE OF WORK | Proj. Mgr. | Prof. Eng | Proj. Eng | CADD/Tech | Field Eng. | Clerical | Total | Lump Sum | TOTAL | |
| | Hours | Hours | Hours | Hours | Hours | Hours | Hours | Task | TASK COST | |
| Task 1: Construction Administration Services | | | | | | | | | | |
| Task 1.1: Pre-Construction Conference (1 meetings at 2hr ea) | | 2 | | | | 2 | 4 | | \$553.84 | |
| Task 1.2: RFI/Substitutions/Submittal Review (20 RFIs/31 submittals) | | 142 | | | 40 | 40 | 222 | | \$25,095.86 | |
| Task 1.3: Witnessing Factory Testing | | 4 | | | | 4 | 8 | | \$1,107.68 | |
| Task 1.4: Construction Progress Meetings (32 meetings at 1hr ea) | | 32 | | | | | 32 | | \$4,615.36 | |
| Task 1.5: Construction Progress Site Visits (8 visits at 4hrs ea) | | 32 | | | | 16 | 48 | | \$5,353.76 | |
| Task 1.6: Project Revisions | | 80 | 20 | 40 | | 10 | 150 | | \$17,538.30 | |
| Task 1.7: Change Directives and Change Notices | | 60 | | | | 30 | 90 | | \$12,634.50 | |
| Task 1.8: Substantial Completion Observation and Punchlist (5 visits at 4hrs ea) | | 20 | | | | 20 | 45 | | \$5,769.15 | |
| Task 1.9: Final Observation (5 visits at 4hrs ea) | | | | | | 5 | 25 | | \$2,884.55 | |
| Task 1.12: Short Circuit, Device Coordination & Arc Flash Analysis | | 32 | | | 16 | 16 | 68 | | \$8,030.68 | |
| Task 1.15: Shutdown Coordination Site Visits and Meetings | | 8 | | | | 48 | 56 | | \$7,522.96 | |
| Subtotal | 0 | 412 | 20 | 96 | 140 | 80 | 748 | | \$91,106.64 | |
| Task 2: Project Closeout | | | | | | | | | | |
| Task 2.1: Record Documents | | 8 | 8 | 24 | | | 40 | | \$3,923.04 | |
| Task 2.2: Warranty Period Inspection (5 visits at 2hr ea) | | | | | | 10 | 10 | | \$1,326.90 | |
| Subtotal | 0 | 8 | 8 | 24 | 10 | 0 | 50 | | \$5,249.94 | |
| Grand Total Hours | 0 | 420 | 28 | 120 | 150 | 80 | 798 | | | |
| Grand Total Labor Cost | \$0.00 | \$60,576.60 | \$3,876.88 | \$8,307.60 | \$19,903.50 | \$3,692.00 | | | \$96,356.58 | |



January 20, 2023

RS&H
10748 Deerwood Park Blvd South
Jacksonville, FL 32256

Attention: Aaron Jackson, PE, LEED AP
Aviation Structural Engineer

Subject: Revised Proposal for Construction Material Testing and Threshold
Inspection Services
PBIA Concourse B Expansion
Palm Beach County, Florida
TSFGEO Proposal No. 2210-594.1

Dear Aaron:

As requested, TSFGEO is pleased to submit this revised proposal to include Threshold Inspection Services along with Construction Material Testing Services for the above referenced project. We have included a general discussion of services that we understand will be required for this project and present our Schedule of Fees for these services.

PROJECT DESCRIPTION

Based on the available information, we understand that the project will consist of constructing a new bump-out addition to Concourse B. The structure addition will be founded on spread footings and concrete columns. The frame will be structural steel. There will also be apron replacement, water and drainage lines associated with the project.

QUALIFICATIONS

TSFGEO is a recognized MBE consulting engineering and testing firm providing integrated services in several disciplines, including geotechnical engineering, construction services, materials engineering & testing, roof & pavement consulting, threshold services, and facilities consulting and engineering.

TSFGEO's Florida offices, located in Miami Lakes, West Palm Beach, Orlando, and Tampa, have over 45 engineers, inspectors, and support staff available to assist our clients. Our inspectors are ACI, CTQP and FDOT trained/certified in their respective disciplines, as required by industry standards. Our engineering staff includes registered professional engineers with significant construction experience in South Florida.

PBIA Concourse B Expansion
TSFGeo Proposal No. 2210-594.1

TSFGeo has earned a reputation for delivering quality service at reasonable costs. TSFGeo has successfully completed thousands of projects for a variety of industries and organizations, including private, corporate and industrial clients; medical facilities, civilian and military agencies of the federal, state and local governments, colleges and universities, and local education agencies.

PROPOSED SCOPE OF SERVICES

We recognize that construction projects are built in the "real world" and that proposed schedules do not always work out. Therefore, we appreciate the importance of being able to respond to requests for our services on short notice and of working hours other than the normal schedule, including nighttime work and weekend work.

Based on our understanding of the project requirements, we anticipate that the following testing services will be required during the design and construction phases of the project.

CONSTRUCTION MATERIAL TESTING SERVICES

Sampling and Laboratory Testing

- Provide Modified Proctor, sieve analysis, organic content tests results on structural fill, footings, slab and backfill material, as required;
- Test compressive strength concrete cylinders and grout prisms for walls;
- Test flexure beams for the aprons; and
- Test compressive strength mortar cubes for masonry walls.

Construction Materials Testing

- Perform In-Place-Density testing on structural fill, footings, slab, subgrade, base and backfill material as needed;
- Conduct slump, and temperature testing on concrete;
- Mold compressive strength test cylinders (5 cylinders per set);
- Mold flexure beam specimens (2 beams per set); and
- Mold compressive strength tests prisms (4 prisms per set).

PROFESSIONAL SERVICES

- Provide weekly reports documenting laboratory tests and field data to appropriate parties;
- Provide Senior Engineer to review daily reports, coordination and meetings.

THRESHOLD INSPECTION SERVICES

STEEL REINFORCEMENT PLACEMENT OBSERVATIONS

- Special inspector's representatives on site as needed to observe the placement of steel reinforcement in spread footings, beams, columns, slab-on-grade, elevated slabs, and concrete masonry walls.

PBIA Concourse B Expansion
TSFGeo Proposal No. 2210-594.1

- Special inspector's representative on site as needed to monitor the erection of masonry walls and monitor the placement of masonry grout in fill cells.

CAST-IN-PLACE CONCRETE

- Special inspector's representatives on site as needed to monitor the placement of structural concrete.

STRUCTURAL STEEL

- Special inspector's representatives on site to verify delivered structural steel members complying with sizes of designed members. Provide American Welding Society Certified Welding Inspectors (CWI) to observe visually welded and/or bolted connections.
- Special inspector's representatives on site to visually inspect the corrugated metal deck sheets as placed on the roof members and verify puddle welds and side laps anchors.

PROFESSIONAL SERVICES

- Provide a Professional Engineer registered as a Special Inspector for Threshold Buildings. The Special Inspector (PE/SI) will perform periodic site visits, supervise the field activities, attend scheduled meetings, review laboratory tests and field observation reports, sign and seal daily inspection reports. Threshold inspection reports will be submitted on a periodic basis to Building Department. Upon completion of the structural components, we will submit a Statement of Completion to the Building Department.

Please note that our services do not include supervision or direction of the actual work. Job site safety will be the sole responsibility of the contractor. Construction defects not related to structural works, such as water penetration (in roofing, windows, doors, louvers), and building finishings (interior, exterior), stairs (railings, surface finish, tread/riser ratio) are not part of our scope of work. TSFGeo cannot be responsible for non-structural defects that could lead to structural elements failures down the road.

ESTIMATED FEE

The actual fees for our services will be highly dependent on the construction schedule. We propose to provide our services on a unit rate basis; based on the actual services performed and the unit rates attached to this proposal. Invoices will be submitted monthly for the portion of work completed. An estimate for our services is indicated below:

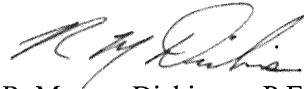
- | | |
|---------------------------------|---------------------|
| • Construction Material Testing | \$ 9,615.00 |
| • Threshold Inspection Services | \$ 7,560.00 |
| Estimated Total Fees | \$ 17,175.00 |

PBIA Concourse B Expansion
TSFGEO Proposal No. 2210-594.1

We appreciate the opportunity to offer our services for your project. Should you have any questions or need additional information, do not hesitate to contact me at (561) 687-8536.

Respectfully submitted,
TSFGEO


Stephen Hey
CS Department Manager


R. Morgan Dickinson, P.E.
Principal Engineer

Attachments: Unit Fee Schedule

PBIA Concourse B Expansion
 TSFGEO Proposal No. 2210-594.1

**Fees Breakdown for
 Construction Materials Testing Services**

| ITEM | Quantity | Rate | Units | Extended |
|--|----------|-----------|-------|--------------------|
| Field and Laboratory Testing Services | | | | |
| SOILS | | | | |
| In-place density tests -Nuclear method (min 5 tests/trip) | 40 | \$ 25.00 | test | \$ 1,000.00 |
| In-place density tests -Sand Cone method (min 5 tests/trip) | 5 | \$ 35.00 | test | \$ 175.00 |
| Modified or Standard Proctor | 2 | \$ 120.00 | test | \$ 240.00 |
| Gradation | 2 | \$ 65.00 | test | \$ 130.00 |
| Organic Content | 2 | \$ 45.00 | test | \$ 90.00 |
| Subtotal | | | | \$ 1,635.00 |
| CONCRETE/GROUT/MORTAR: | | | | |
| Engineering Technician (test plastic concrete/grout, sample pickup, standby | | \$ 60.00 | hour | \$ - |
| Compression Testing of Concrete Cylinders-(set of 5) | 8 | \$ 60.00 | set | \$ 480.00 |
| Compression Testing of Flexure Beams- (set of 2) | 8 | \$ 120.00 | set | |
| Compression Testing of Grout Prisms-(set of 4) | 2 | \$ 50.00 | set | \$ 100.00 |
| Additional Cylinders/Prisms (each) | | \$ 18.00 | each | \$ - |
| Additional Beams (each) | | \$ 50.00 | each | \$ - |
| Concrete Compression Test, Prepare cylinders & slump test on site & deliver to lab, (Min five (5) cylinders per set) | 8 | \$ 150.00 | set | \$ 1,200.00 |
| Concrete Compression Test, Prepare beams & slump test on site & deliver to lab, (Min two (2) beams per set) | 8 | \$ 150.00 | set | \$ 1,200.00 |
| Subtotal | | | | \$ 2,980.00 |
| ASPHALT | | | | |
| Asphalt Paving Technician (est. 2 days paving) | 16 | \$ 65.00 | hour | \$ 1,040.00 |
| Asphalt Plant Technician (est. 2 days paving) | 20 | \$ 75.00 | hour | \$ 1,500.00 |
| Subtotal | | | | \$ 2,540.00 |
| WELDING INPSECTIONS | | | | |
| Welding inspector (min 4 hrs/trip) | 4 | \$ 90.00 | hour | \$ 360.00 |
| Subtotal | | | | \$ 360.00 |
| Professional and Technical Services* | | | | |
| Principal Engineer | 10 | \$ 165.00 | hour | \$ 1,650.00 |
| Project Engineer | | \$ 120.00 | hour | \$ - |
| Administrative Services | 10 | \$ 45.00 | hour | \$ 450.00 |
| Subtotal | | | | \$ 2,100.00 |
| Total Estimated Fees | | | | \$ 9,615.00 |
| ITEM | Quantity | Units | Rate | Extended |
| Professional and Technical Services* | | | | |
| Principal Engineer/Registered Threshold Inspector | 10 | \$ 165.00 | hour | \$ 1,650.00 |
| Threshold Inspector Representative(min 4 hrs visit) | 40 | \$ 80.00 | hour | \$ 3,200.00 |
| CWI for structural steel (min 4 hrs/visit) | 24 | \$ 90.00 | hour | \$ 2,160.00 |
| Project Engineer | | \$ 115.00 | hour | \$ - |
| Administrative Services | 10 | \$ 55.00 | hour | \$ 550.00 |
| Total Estimated Fees | | | | \$ 7,560.00 |

PBIA Concourse B Expansion
TSFGeo Proposal No. 2210-594.1

General Notes:

Please note the following procedures will apply to our services:

- 1- Field work hours for inspectors are Monday thru Friday, 8:00AM to 5:00PM.
- 2- We need 24 hours notice by contacting our office (561) 687-8536 prior to any site visit.
- 3- We can accommodate weekend inspections if necessary with a minimum of 48 hours notice.
- 4- Field work beyond 8 hours/day, night time and weekends (OT) will be billed at the regular rate times 1.5
- 5- Stand-by time will be billed at hourly rate listed.

AUTHORIZATION

| AUTHORIZED BY: | INVOICE TO: |
|-----------------------|--------------------|
| Firm: | Firm: |
| Name: | Name: |
| Title: | Address: |
| Date: | Phone #: |
| | Fax #: |

PBIA Concourse B Expansion
TSFGeo Proposal No. 2210-594.1

TSFGeo's General Conditions

1. **SCOPE OF WORK** - Work means the specific geotechnical, analytical, testing or other service to be performed by TSFGeo as set forth in TSFGeo's proposal, Client's acceptance of the scope of work and these General Conditions. Additional work ordered by Client shall also be subject to these General Conditions. "Client" refers to the person or business entity ordering the work to be done by TSFGeo. Client shall communicate these General Conditions to each and every third party to whom Client transmits any part of TSFGeo's work. TSFGeo shall have no duty or obligation to any third party greater than that set forth in TSFGeo's proposal, Client's acceptance of TSFGeo's proposal and these General Conditions. The ordering of work from TSFGeo, or the reliance on any of TSFGeo's work, shall represent acceptance of the terms of TSFGeo's proposal and these General Conditions, regardless of the terms of any subsequently issued document.
2. **RIGHT-OF-ENTRY** -The client will provide right-of-entry for TSFGeo and all necessary equipment in order to complete the work. While TSFGeo will take all reasonable precautions to minimize any damage to the property, it is understood by Client that in the normal course of work some damage may occur, the correction of which is not part of this agreement.
3. **DAMAGE TO EXISTING MAN-MADE OBJECTS** -The Client, will provide the location of all underground utilities or obstructions to TSFGeo who, in the prosecution of their work, will take all reasonable precautions to avoid damage or injury to any such subterranean structure or utility. The Owner agrees to hold TSFGeo harmless for any damages to subterranean structures which are not called to TSFGeo's attention and correctly shown on the plans furnished and will reimburse TSFGeo for any expenses in connection with any claims or suits including reasonable attorney fees at the trial and appellate levels.
4. **IN-PLACE MATERIALS TESTING** - TSFGeo will not be responsible for repair or damage to portions of structures designated for in-place materials testing. Repairs can be made for aesthetic reasons if requested in advance of the work to be performed. The cost for labor and materials would be charged.
5. **SAMPLE RETENTION** - TSFGeo will retain all soil and rock samples obtained for geotechnical explorations for 30 days. Samples subjected to Construction Materials and Laboratory testing are disposed of subsequent to testing. Further storage or transfer of samples can be made at Client's expense upon written authorization.
6. **DEFINITION OF RESPONSIBILITY (OBSERVATION SERVICES)** - The presence of our field representative will be for the purpose of providing observation and field testing. Our work does not include supervision or direction of the actual work of the contractor, his employees or agents. The contractor for this project should be so advised.
 - 6.1. The Contractor should also be informed that neither the presence of our field representative or the observation and testing by our firm shall excuse him in any way for defects discovered in his work. It is understood that TSFGeo will not be responsible for the Contractor's job or site safety on his project. That will be the sole responsibility of the contractor.
7. **STANDARD OF CARE** -Service performed by TSFGeo under this Agreement will be conducted in a manner consistent with that level of care and skill ordinarily exercised by members of the profession currently practicing under similar conditions. No other warranty, expressed or implied, is made.
 - 7.1. Client recognizes that subsurface conditions may vary from those encountered at the location where borings, surveys or explorations are made by TSFGeo and that the data, interpretations and recommendations of TSFGeo are based solely on the information available to it. TSFGeo shall not be responsible for the interpretation by others of information developed.
8. **ORAL AGREEMENTS** -No oral agreement, guarantee, promise, representation or warranty shall be binding.
9. **OWNERSHIP OF DOCUMENTS** -All reports, boring logs, field data and notes, laboratory test data, calculations, estimates and other documents prepared by TSFGeo, as instruments of service, shall remain the property of TSFGeo until final payment is received and a letter of copyright transfer been executed.
10. **BASIS OF PAYMENT** -Payment is due within 30 days of date of invoice. Payments not made when due shall bear interest at eighteen (18) percent annum or at the maximum rate allowed by law from the date of the invoice until same is paid.
 - 10.1. If the Client fails to make any payment due to TSFGeo for service and/or expenses within 60 days of date of invoice, TSFGeo may, after giving seven days' written notice to Client, suspend services until all outstanding amounts have been paid to TSFGeo in full. Further, TSFGeo may, in addition to withholding services, or singularly, withhold reports, plans and other documents not paid in full by the Client. In the event that final payment for completed work is not made, TSFGeo shall request that all copyrighted documents which were submitted to client be returned and all information used in project plans be removed from project documents.
 - 10.2. In the event it is necessary to take legal action to effect collection, whether or not litigation is commenced, the Client agrees to reimburse TSFGeo for expenses in connection with any claims or suits, including reasonable attorney's fees, including but not limited to the trial and appellate levels.
 - 10.3. This contract shall be governed by the laws of the State of Florida.
11. **CONSTRUCTION REVIEW** - TSFGeo cannot accept responsibility for any design work unless the work includes services for construction review to determine whether or not the work performed is in substantial compliance with TSFGeo's conclusions and recommendations.
12. **INDEMNIFICATION** -TSFGeo agrees to hold harmless and indemnify Client from and against liability arising out of TSFGeo's negligent performance of the work. Client agrees to indemnify and hold TSFGeo harmless from all liability including all costs, attorney's fees and expenses of defense for any claims by any other person or corporation which may arise out of the performance or breach of this contract for which TSFGeo was not solely negligent.
13. **LIMITATION OF LIABILITY** -The Client/Owner agrees to limit TSFGeo's liability for negligent professional acts, errors or omissions, such that the total aggregate liability of TSFGeo shall not exceed \$50,000 or the total fee for the services rendered on this project, whichever is greater. The Owner further agrees to require the contractor and his subcontractors a similar limitation of liability suffered by the contractor or the subcontractors arising from TSFGeo's negligent professional acts, errors or omissions.
 - 13.1. If Client prefers to have higher limits on professional liability, TSFGeo agrees to increase the limits up to a maximum of \$1,000,000 upon Client's written request at the time of accepting our proposal provided that Client agrees to pay an additional consideration of 5 percent of our total fee. The additional charge for the higher liability limits is because of the greater risk assumed and is not strictly a charge for additional professional liability insurance.
14. **INSURANCE** -TSFGeo represents and warrants that it and its agents, staff and consultants employed by it are protected by Worker's Compensation insurance and Employer's Liability Insurance in conformance with applicable state laws. TSFGeo has such coverage under public liability and property damage insurance policies that TSFGeo deems to be adequate. A Certificate of Insurance can be supplied evidencing such coverage upon request.
 - 14.1. Within the limits and conditions of such insurance, TSFGeo agrees to indemnify and save client harmless from and against any loss, damage or liability arising from any negligent acts by TSFGeo, its agents, staff and consultants employed by it. TSFGeo shall not be responsible for any loss, damage or liability beyond the amounts, limits and considerations of such insurance. TSFGeo shall not be responsible for any loss, damage or liability arising from any acts by clients, its agents, staff and other consultants employed by it.
 - 14.2. Cost of the above coverage is included in our quoted fees. If additional coverage or increased limits of liability are required, TSFGeo will endeavor to obtain the requested insurance and charge separately for costs associated with additional coverage or increased limits.
15. **TERMINATION** -This agreement may be terminated by either party upon seven days written notice in the event of substantial failure by the other party to perform in accordance with the terms thereof. Such termination shall not be effective if the substantial failure has been remedied before expiration of the period specified in the written notice. In the event of termination, TSFGeo shall be paid for services performed to the termination notice date plus reasonable termination expenses.
 - 15.1. In the event of termination or suspension for more than three months, prior to completion of all reports contemplated by this Agreement, TSFGeo may complete a report on the services performed to the date of notice of termination or suspension. The expenses of termination or suspension shall include all direct costs for TSFGeo in completing such analyses, records and reports.
16. **CLIENT'S OBLIGATION TO NOTIFY TSFGeo** - Client represents and warrants that it has advised TSFGeo of any known or suspected hazardous materials or conditions, utility lines and pollutants at any site at which TSFGeo is to do work hereunder, and unless TSFGeo has assumed in writing the responsibility of locating subsurface objects, structures, lines or conduits, Client agrees to defend, indemnify and save TSFGeo harmless from all claims, suits, losses, costs and expenses, including reasonable attorney's fees as a result of personal injury, death or property damage occurring with respect to TSFGeo's performance of its work and resulting to or caused by contact with subsurface or latent objects, structures, lines or conduits where the actual or potential presence and location thereof were not revealed to TSFGeo by Client.
17. **HAZARDOUS MATERIALS** -This agreement shall not be interpreted as requiring TSFGeo to assume the status of an owner, operator, generator, storer, transporter, treater or disposal facility as those terms appear within RCRA or within any Federal or State statute or regulation governing the generation, transportation, treatment, storage and disposal of pollutants.

Initial _____

EXHIBIT A-2 – Task III Services

TASK III SERVICES

Level 3 Tasks – Miscellaneous Planning and Engineering Services: Work to be completed under Level 3 Tasks will be issued per the level of authority contained in PPW CW-F-050, by way of a separate proposal or task authorization, as described in the original Consulting Agreement (R-2019-0612).

| TASK LEVEL / NO. | DESCRIPTION | BUDGET |
|----------------------------|--|---------------|
| Task III-19-DOA-R-001 | Misc. AEP and Construction Consulting Services Amendment #7 | \$ 0.00 |
| Sub-total (Level 3) | | \$ 0.00 |

EXHIBIT B: DETAILED FEES, EXPENSES AND PAYMENTS

EXHIBIT B-I: Summary of Fees

This Amendment #7, as described herein, consists of multiple tasks. As summarized below, these initial efforts have an overall budget of \$1,109,482.80

LEVEL 1 TASKS:

| TASK Level / No. | DESCRIPTION | LUMP SUM | NOT-TO-EXCEED | REIMBURSABLE EXPENSES | TOTAL |
|-------------------------|--|-----------------|----------------------|------------------------------|----------------|
| I-23-PBI-R-031: | Concourse B Expansion Package 1 – Construction Administration & Partial RPR Services | \$686,186.80 | \$367,413.00 | \$55,883.00 | \$1,109,482.80 |

LEVEL 3 TASKS:

| TASK LEVEL / NO. | DESCRIPTION | TOTAL |
|-----------------------------------|---|-----------------------|
| Task III-19-DOA-R-001 | Misc. AEP and Construction Consulting Services Amendment #7 | \$0.00 |
| Grand Total (Amendment #7) | | \$1,109,482.80 |

EXHIBIT B-II: Schedule of Payments

The Scope of Work to be completed by CONSULTANT as defined in Exhibit "A" consist of specific completion phases which shall be clearly identified on phase-by-phase basis upon submission to the COUNTY of certain "deliverables"¹ as expressly indicated below. Compensation for the work tasks stated herein shall be in accordance with the following schedule of payment.

The following is a list of projects in the Work Program #2: Amendment #7:

LEVEL 1 TASKS:

| | |
|----------------------------|--|
| Task I-23-PBI-R-031 | <u>Concourse B Expansion Package 1 – Construction Administration & Partial RPR Services</u> |
| Duration: | 718 Working Days (~514 Calendar Days) |
| Compensation: | \$1,109,482.80 |

LEVEL 3 TASKS:

| | |
|------------------------------|--|
| Task III-19-DOA-R-001 | Misc. AEP and Construction Consulting Services Amendment #7 |
| Duration: | As required in accordance with specific Task Authorizations |
| Compensation: | \$0.00 |

| | |
|----------------|-----------------------|
| TOTAL = | \$1,109,482.80 |
|----------------|-----------------------|

1. "Deliverables" shall be defined as progress reports, prepared maps, bid documents, completed drawings, specific reports, work plans, documentation of meetings attended, assessment study reports, analysis reports, summary reports, recommendation reports and related draft reports and verifiable deliverables.

EXHIBIT D – DISADVANTAGED BUSINESS ENTERPRISE COMPLIANCE

Table D-1 summarizes the estimated fee for each of our team members that are certified DBE firms for Amendment 7.

Table D-1: DBE Firms, Scheduled Payment, Scheduled % of Fee

| Firm | Amendment 7 Totals | % of Amendment 7 |
|----------------------|---------------------------|-------------------------|
| Tierra South Florida | \$ 17,175.00 | 1.55% |
| Quantum | \$ 96,356.58 | 8.68% |

TOTALS \$ 113,531.58 10.23%

THE REST OF THIS PAGE IS INTENTIONALLY LEFT BLANK.

Table D-2 summarizes the estimated fee for each of our team members that are certified DBE firms for the Total Contract.

Table 2: DBE Firms, Scheduled Payment, Scheduled % of Total Fee

| Firm | Base (R2019-0612) Totals | Amendment 1 (R2020-0414) Totals | Amendment 2 (R2020-1607) Totals | Amendment 4 (R2021-0844) Totals | Amendment 5 (R2022-0263) Totals | Amendment 6 (R2023-0103) Totals | Amendment 7 Totals | Total Fees | % of Total Contract |
|---|--------------------------------|---------------------------------------|---------------------------------------|---------------------------------------|---------------------------------------|---------------------------------------|-----------------------|------------------------|---------------------------|
| Colome' | \$ 73,966.80 | \$ 164,286.41 | \$ - | \$ - | \$ - | \$ - | \$ - | \$ 238,253.21 | 1.76% |
| Tierra South Florida | \$ 28,715.00 | \$ 26,985.00 | \$ 29,240.00 | \$ - | \$ 3,165.00 | \$ - | \$ 17,175.00 | \$ 105,280.00 | 0.78% |
| Brown & Phillips | \$ 20,021.45 | \$ 18,202.62 | \$ 18,979.53 | \$ - | \$ - | \$ - | \$ - | \$ 57,203.60 | 0.42% |
| CECOS | \$ - | \$ 5,403.70 | \$ - | \$ - | \$ - | \$ - | \$ - | \$ 5,403.70 | 0.04% |
| Mobio | \$ 161,533.98 | \$ - | \$ 176,600.00 | \$ 323,400.00 | \$ - | \$ - | \$ - | \$ 661,533.98 | 4.88% |
| Lakdas-Yohalem | \$ - | \$ - | \$ - | \$ - | \$ - | \$ - | \$ - | \$ - | 0.00% |
| Connico | \$ 90,000.00 | \$ 9,300.00 | \$ 69,000.00 | \$ - | \$ - | \$ - | \$ - | \$ 168,300.00 | 1.24% |
| Digital Building Services (3D Point Scan) | \$ - | \$ - | \$ 183,689.00 | \$ - | \$ - | \$ - | \$ - | \$ 183,689.00 | 1.36% |
| Master Consulting Engineers | \$ - | \$ 83,865.96 | \$ 4,960.00 | \$ 32,078.44 | \$ - | \$ - | \$ - | \$ 120,904.40 | 0.89% |
| Quantum | \$ - | \$ 181,491.77 | \$ 1,229,569.80 | \$ 149,029.00 | \$ 542,155.33 | \$ 548,241.35 | \$ 96,356.58 | \$ 2,746,843.83 | 20.28% |
| CRJ | \$ - | \$ 117,500.00 | \$ - | \$ - | \$ - | \$ - | \$ - | \$ 117,500.00 | 0.87% |
| TOTALS | \$ 374,237.23 | \$ 607,035.46 | \$ 1,712,038.33 | \$ 504,507.44 | \$ 545,320.33 | \$ 548,241.35 | \$ 113,531.58 | \$ 4,404,911.72 | 32.51% |

**SCHEDULE 1(A)
LIST OF PROPOSED DBE FIRMS
(Professional Services)**

Airport Facilities & Systems Planning, Design, Engineering and Construction Management Professional Services for
LOI/SOQ Project Description: Palm Beach County Department of Airports

Name of Respondent: RS&H, Inc.

Change Order/Task/Amendment No. (if applicable): Amendment No 7

Contact Person: Pat Hargrove

E-mail Address: pat.hargrove@rsandh.com

Address: 10748 Deerwood Park Blvd S, Jacksonville FL 32256

Phone No.: 904-256-2437 Fax No: 800-464-4358

| Name, Address & Phone No. of DBE Firm | Description of Type of Work | Classification (Check applicable box) | Percentage of DBE Participation | | | |
|---------------------------------------|--|--|---------------------------------|----------|---------|-----------------------------|
| | | | Black | Hispanic | Women | Other (Please Specify) |
| Quantum Electrical | Electrical Engineering Design Services | <input type="checkbox"/> Prime Consultant <input checked="" type="checkbox"/> Subcontractor <input type="checkbox"/> Supplier <input type="checkbox"/> Manufacturer | _____ % | _____ % | 8.68 % | _____ % |
| Tierra South Florida | Threshold Inspection / Material Testing Services | <input type="checkbox"/> Prime Consultant <input checked="" type="checkbox"/> Subcontractor <input type="checkbox"/> Supplier <input type="checkbox"/> Manufacturer | _____ % | _____ % | _____ % | 1.55 % (Asian / Pacific) |
| | | <input type="checkbox"/> Prime Consultant <input type="checkbox"/> Subcontractor <input type="checkbox"/> Supplier <input type="checkbox"/> Manufacturer | _____ % | _____ % | _____ % | _____ % |
| | | <input type="checkbox"/> Prime Consultant <input type="checkbox"/> Subcontractor <input type="checkbox"/> Supplier <input type="checkbox"/> Manufacturer | _____ % | _____ % | _____ % | _____ % |

Total Percentage of DBE Participation: 10.23 %

Notes:

- The percentages listed on this form for each DBE Firm must be supported by the percentages included on Schedule 2(A), "Letter of Intent to Perform as a Disadvantaged Business Enterprise", in order to be counted toward attainment of the DBE goal.
- Firms identified on this form must be certified as a DBE by the State of Florida's Unified Certification Program. Certification status can be verified on the Florida Department of Transportation's Biznet website at <https://www3.dot.state.fl.us/EqualOpportunityOffice/biznet/mainmenu.asp>.
- If materials or supplies are proposed to be purchased from a DBE regular dealer, the undersigned acknowledges that only sixty percent (60%) of the proposed expenditure will be counted toward attainment of the DBE goal.

By signing this form the undersigned Respondent is committing to utilize the above referenced DBE Firms on the Project and that the Respondent will monitor the DBE Firms to ensure that the work is actually performed by the by the DBE Firms.

By: Pat Hargrove
DocuSigned by:
400120E50A4642F...
 Signature
 Pat Hargrove, AIA NCARB, Vice President, Aviation
 Print Name/Title of Person Executing on Behalf of the Respondent

Date: 2/6/2023

SCHEDULE 2(A)
LETTER OF INTENT TO PERFORM AS A DISADVANTAGED BUSINESS ENTERPRISE
(Professional Services)

Airport Facilities & Systems Planning, Design, Engineering and Construction Management Professional
LOI/SOQ Project Description: Services for Palm Beach County Department of Airports

Change Order/Task /Amendment No. (if applicable): _____

Name of Prime Respondent: RS&H, Inc.

Name of DBE Firm: Quantum Electrical Engineering, Inc.

The undersigned is certified as a Disadvantaged Business Enterprise by the State of Florida's Unified Certification Program. Check one or more classifications as applicable:

- Black Hispanic Women Other (Please Specify) _____
- Prime Consultant Subcontractor Manufacturer Supplier

The undersigned is prepared to perform the following described work in connection with the above-referenced project (specify in detail the particular work and/or parts thereof to be performed):

Electrical Engineering Design Services

(Additional Sheets may be used as necessary.)

Total Percentage of Participation by DBE Firm for this Project: 8.68 %

and will enter into a formal agreement for work with you conditioned upon your execution of a contract with Palm Beach County.

If the undersigned intends to subcontract any portion of the work described above to another subcontractor, please complete the following:

| | | | |
|-------------------------|--|---|--|
| | | % | <input type="checkbox"/> DBE Certified |
| (Name of Subcontractor) | (Percentage of work to be subcontracted) | | <input type="checkbox"/> Non-DBE |

The undersigned affirms that it has the resources necessary to perform the work described above without subcontracting the work to another subcontractor, except as noted above.

Quantum Electrical Engineering, Inc.

Printed Name of DBE Subcontractor

By: Amy Champagne-Baker
Signature

Date: 2/6/2023

**SCHEDULE 2(A)
LETTER OF INTENT TO PERFORM AS A DISADVANTAGED BUSINESS ENTERPRISE
(Professional Services)**

LOI/SOQ Project Description: Airport Facilities & Systems Planning, Design, Engineering and Construction Management Professional Services for Palm Beach County Department of Airports

Change Order/Task /Amendment No. (if applicable): _____

Name of Prime Respondent: RS&H, Inc.

Name of DBE Firm: Tierra South Florida, Inc.

The undersigned is certified as a Disadvantaged Business Enterprise by the State of Florida's Unified Certification Program. Check one or more classifications as applicable:

- Black Hispanic Women Other (Please Specify) Asian / Pacific
- Prime Consultant Subcontractor Manufacturer Supplier

The undersigned is prepared to perform the following described work in connection with the above-referenced project (specify in detail the particular work and/or parts thereof to be performed):

Material Testing / Threshold Inspection Services

(Additional Sheets may be used as necessary.)

Total Percentage of Participation by DBE Firm for this Project: 1.55 %

and will enter into a formal agreement for work with you conditioned upon your execution of a contract with Palm Beach County.

If the undersigned intends to subcontract any portion of the work described above to another subcontractor, please complete the following:

| | | | |
|-------------------------|--|---|--|
| | | % | <input type="checkbox"/> DBE Certified |
| (Name of Subcontractor) | (Percentage of work to be subcontracted) | | <input type="checkbox"/> Non-DBE |

The undersigned affirms that it has the resources necessary to perform the work described above without subcontracting the work to another subcontractor, except as noted above.

Tierra South Florida, Inc.

Printed Name of DBE Subcontractor

By: Morgan Dickinson Dickinson
Signature

Date: 2/6/2023

Attachment No. 2

| | | | | | |
|--|-------------------|--------------------------------|----------------------|------------------------|----------------------------|
| Airport General Consulting Professional Services - 2018 | | | | | |
| RFP #: DOA-18-2A - Facilities & Systems | | | | | |
| Date: November 29, 2017 | | | | | |
| Marketplace: BC, PBC, MDC | | | | | |
| DBE Project Goal: 18% - adjusted for past participation | | | | | |
| | | | | | |
| NAICS Description | NAICS Code | Estimated Percentage of | Available DBE | Total Available | Weighted Percentage |
| Engineering Services | 541330 | 30.00% | 149 | 1286 | 3.48% |
| Architectural Services | 541310 | 45.00% | 40 | 667 | 2.70% |
| Construction Management | 236220 | 10.00% | 239 | 815 | 2.93% |
| Testing Services | 541380 | 2.50% | 12 | 92 | 0.33% |
| Land Surveying & Mapping | 541370 | 2.50% | 24 | 144 | 0.42% |
| Planning Services | 541320 | 10.00% | 15 | 166 | 0.90% |
| Other Consulting Services | 541690 | 0.00% | 64 | 571 | 0.00% |
| Total | | 100.00% | | | 10.75% |

| | |
|--|------------------------------------|
| General Consulting Services Contracts | DBE Participation (to date) |
| R2006-2418 | 21% |
| R2009-1643 | 31% |
| R2011-1333 | 29% |
| R2014-0031 | 13% |
| Median Participation | 25% |
| Adjustment for Past Participation | 18% |
| DBE Project Goal | Percentage |
| | 18% |