

**PALM BEACH COUNTY
BOARD OF COUNTY COMMISSIONERS
AGENDA ITEM SUMMARY**

Meeting Date:	January 23, 2024	<input checked="" type="checkbox"/> Consent	<input type="checkbox"/> Regular
		<input type="checkbox"/> Workshop	<input type="checkbox"/> Public Hearing

Department: Engineering & Public Works Department
Submitted By: Engineering & Public Works Department
Submitted For: Roadway Production Division

I. EXECUTIVE BRIEF

Motion and Title: Staff recommends motion to approve: Consultant Service Authorization No. 2 (CSA) to the Annual Structural Engineering Services Contract (R2023-0263) dated March 14, 2023 (Contract) with Kimley-Horn and Associates, Inc. (KHA) in the amount of \$130,257.51 for the Torry Island Swing Bridge Repairs (Project).

SUMMARY: Approval of this CSA will provide the professional services necessary for the design of bridge repair plans for the Project. The plans will address corroded steel members, missing rivets and cracked welds. On January 5, 2022, the Goal Setting Committee applied Affirmative Procurement Initiatives of a 20% minimum mandatory Small Business Enterprise (SBE) participation of which at least 5% must be Minority Business Enterprise participation for African American owned firms, and an SBE evaluation preference. KHA agreed to 40% SBE participation for the Contract. They agreed to 13.8% SBE participation for this CSA. KHA has an office located in Palm Beach County (County). District 6 (YBH)

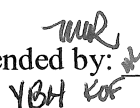


Background and Justification: On March 14, 2023, the Board of County Commissioners (BCC) approved the Contract with KHA to provide the professional services for Annual Structural Engineering throughout the County. The fee, as detailed in **Exhibit B** of the attached CSA, has been negotiated as just and reasonable compensation as follows:

Basic Services (Lump Sum)	\$104,698.29	(Design review, bridge repair, bridge layout, steel repair plan development and field review).
Reimbursable Services (Not to Exceed)	\$ 2,910.00	(Survey and Permit Fees)
Optional Services (Not to Exceed)	<u>\$ 22,649.22</u>	(Mechanical repairs and US Coast Guard Coordination).
Total:	\$130,257.51	

After reviewing the attached CSA and finding it in proper order, the Engineering & Public Works Department recommends BCC approval.

Attachments:

1. Location Map
2. CSA No. 2 with Exhibits A, B, C, D & Ebix Insurance Compliance (2)

Recommended by: 	 _____ County Engineer	12/16/23 _____ Date
Approved By:	 _____ Assistant County Administrator	12/28/23 _____ Date

II. FISCAL IMPACT ANALYSIS

A. Five Year Summary of Fiscal Impact:

Fiscal Years	2024	2025	2026	2027	2028
Capital Expenditures	\$ 182,658	-0-	-0-	-0-	-0-
Operating Costs	-0-	-0-	-0-	-0-	-0-
External Revenues	-0-	-0-	-0-	-0-	-0-
Program Income (County)	-0-	-0-	-0-	-0-	-0-
In-Kind Match (County)	-0-	-0-	-0-	-0-	-0-
NET FISCAL IMPACT	\$ 182,658	-0-	-0-	-0-	-0-
# ADDITIONAL FTE POSITIONS (Cumulative)	-0-	-0-	-0-	-0-	-0-

Is Item Included in Current Budget? Yes No
 Is this item using Federal Funds? Yes No
 Is this item using State Funds? Yes No

Budget Account No:

Fund 3900 Dept 361 Unit 1912 Object 6505

Recommended Sources of Funds/Summary of Fiscal Impact:

Capital Outlay
 Torry Island Swing Bridge Repairs

Consultant Service Authorization (CSA) #2

• Basic Services	\$ 104,698.29
• Reimbursable	\$ 2,910.00
• Optional Services	\$ 22,649.22
Total CSA #2	\$ 130,257.51

Estimated Staff Costs

• Roadway Production	\$ 26,100.00
• Roadway Production: Right-of-Way	\$ 6,600.00
• Survey	\$ 6,600.00
• Traffic	\$ 13,100.00
Total Staff Costs	\$ 52,400.00

Fiscal Impact \$ 182,657.51

C. Departmental Fiscal Review: *Danny Ramalasingh*

III. REVIEW COMMENTS

A. OFMB Fiscal and/or Contract Dev. and Control Comments:

ASD 12/1/23
 OFMB 12/14 MD 12/14

Ar. J. Jaworski 12/18/23
 Contract Dev. and Control
 12/14/23

B. Approved as to Form and Legal Sufficiency:
[Signature] 12/19/23
 Assistant County Attorney

C. Other Department Review:

 Department Director

This summary is not to be used as a basis for payment.
 2

PROJECT LOCATION
TORRY ISLAND SWING BRIDGE REPAIRS
Palm Beach County Project #2020602



LOCATION MAP

CONSULTANT SERVICE AUTHORIZATION NO. 2
UNDER THE ANNUAL STRUCTURAL ENGINEERING SERVICES CONTRACT

Project Name: **Torry Island Swing Bridge Repairs**

Project No: **2020602**

Commission District No.: **6**

SBE Participation for this authorization is **13.8%**

SBE Participation to date for this Contract is **13.8%**

SBE Commitment is **40%**

This authorization is under the EBO Ordinance.

PALM BEACH COUNTY
BOARD OF COUNTY COMMISSIONERS

Account No.: 3900-361-1912-6505

Consultant Service Authorization No. 2 (CSA) under Annual Structural Engineering Services Contract dated March 14, 2023 (R2023-0263), (CONTRACT), between the COUNTY and the CONSULTANT identified herein is for the services described in **EXHIBIT A** and **EXHIBIT B** for this CSA.

1. CONSULTANT: Kimley-Horn and Associates, Inc.
2. Address: 1920 Wekiva Way, Suite 200, West Palm Beach, Florida 33411
3. CONSULTANT shall begin work promptly on the requested Additional Services, per the schedule attached as part of **EXHIBIT A**.
4. Scope of Services to be provided by CONSULTANT: Provide professional engineering services to Palm Beach County for the Torry Island Swing Bridge Repairs project. Design bridge repair plans necessary for the servicing of the existing bridge in accordance with the attached **EXHIBIT A** dated October 13, 2023.
5. The compensation to be paid CONSULTANT for providing the requested services as detailed in **EXHIBIT B** shall be:

<input checked="" type="checkbox"/> Basic Services in a lump sum fee of	\$104,698.29
<input checked="" type="checkbox"/> Reimbursable Expenses capped at	\$ 2,910.00
<input checked="" type="checkbox"/> Optional Services capped at	<u>\$ 22,649.22</u>
Totaling	\$130,257.51

OEBO Schedules 1 & 2 **EXHIBIT C**

Project History **EXHIBIT D**

6. All terms of the CONTRACT, shall apply to this CSA.

CONSULTANT SERVICE AUTHORIZATION NO. 2
UNDER THE ANNUAL STRUCTURAL ENGINEERING SERVICES CONTRACT

IN WITNESS WHEREOF, this CSA is accepted as of the date signed by the COUNTY below, subject to the terms and conditions of the aforementioned CONTRACT.

CONSULTANT: **Kimley-Horn and Associates Inc.**
Federal ID: 56-0885615

COUNTY:
Approved as to Terms and Conditions

Signed: *Marwan Mufleh*

By: *Morton L. Rose*

Typed Name: Marwan Mufleh, P.E.

Typed Name: Morton L. Rose, P.E.

Title: Principal/Senior V.P.

Title: Division Director

Date: 11-28-2023

(Corporate Seal)



ATTEST WITNESS:

Signed: *Gin Ng*

Typed Name: Gin Ng

Title: Vice President

Date: 11/28/23

CONSULTANT SERVICE AUTHORIZATION NO. 2
UNDER THE ANNUAL STRUCTURAL ENGINEERING SERVICES CONTRACT

{SIGNATURE PAGES CONTINUED}

COUNTY: **Palm Beach County**, a Political
Subdivision of the State of Florida, by and
through its Board of County Commissioners

Signed: _____

Typed Name: Maria Sachs

Title: Mayor

Date: _____

ATTEST:

Joseph Abruzzo
Clerk of the Circuit Court & Comptroller

By: _____
Deputy Clerk

Approved as to Form and Legal Sufficiency

By: _____

Typed Name: Yelizaveta B. Herman

Title: Assistant County Attorney

F:\ROADWAY\CCNA\ANNUALS\STRUCTURAL\Kinley-Horn\2020\2020602_Torry_Island_Swing_Bridge_Repairs\CSA_and_Supplement_Template.docx

**SCOPE OF SERVICES
For BRIDGE REPAIRS
for Torry Island Road Swing Bridge over SFWMD Rim Canal**

*Scoped Feb 01c
WJC 10/21/23*

Palm Beach County Project Number: 2020602

August 7, 2023
Revised August 9, 2023
Revised August 21, 2023
Revised October 13, 2023

I. DESCRIPTION AND BACKGROUND

Palm Beach County currently owns and maintains the Torry Island Road swing bridge over South Florida Water Management District (SFWMD) Rim Canal (Br. No. 930072). The existing bridge is a manually operated steel truss swing bridge that provides access to the Torry Island campgrounds and fish camp. The steel truss swing span was originally constructed in 1916 over the Saint Lucie River near Stuart and was later relocated in 1935 to its current location over the SFMWD Rim Canal along the southeastern portion of Lake Okeechobee in Palm Beach County. The County has requested the Consultant develop bridge repair plans necessary to rehabilitate the existing bridge. The repairs will be concentrated on the non-mechanical portions of the steel truss of the swing span as the approach concrete spans are in good condition.

This bridge was recently evaluated by another Consultant as part of a previous work authorization for Palm Beach County. The previous evaluation recommended the following repairs:

- Repairs to the lock rod
- Repair all members with corrosion and section loss
- Repair bottom chords where minor buckling is noted
- Replace rivets with section loss
- Clean and recoat the existing steel truss bridge

In addition to the items identified in the previous evaluation, the FDOT Bridge Inspection Report was reviewed, and the following items were identified in the FDOT Bridge Inspection Report as items that should also be addressed as part of these bridge repairs to the non-mechanical portions of the bridge.

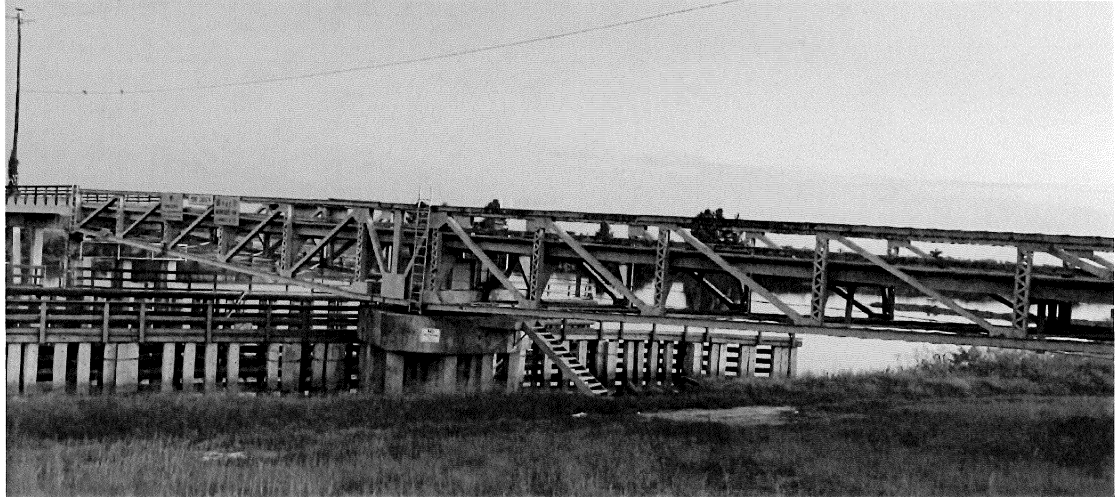
- Repair the cracked welds between the open floor grating and the main support bars
- Repair crack in north access ladder over pivot pier cap
- Repair, replace, or properly mount damaged junction boxes for navigation lighting
- Remove vegetation growing on the bridge

The FDOT Bridge Inspection Report also lists the below deficiencies to the mechanical elements of the steel truss swing bridge.

- Remove debris accumulation on gears and re-grease
- Reinstall Pin P-2C and replace broken cotter pins
- Adjust linkage suspenders to raise linkage rod off of below supports where it is rubbing
- Shim SE and NE wedges to provide full contact

- Replace washers with tapered washers to provide contact at end wedge assembly
- Adjust traffic gate to meet current FDOT height requirements

The Consultant will develop bridge repair plans that will address the elements identified in the previous evaluation, FDOT Bridge Inspection Report, and the Consultants field review to the non-mechanical elements of the bridge. At the completion of the field work the Consultant will meet with the County to discuss the observations of the mechanical elements. The limited repairs to the mechanical elements will be included in this scope of services as an optional service.



The cleaning and coating of the steel truss swing bridge will require a containment system to contain the cleaning and coating operations. The Consultant will contract with a subconsultant to conduct tests on the existing paint to investigate for heavy metals (lead and others) that will impact the level of containment system that will be required. With this bridge being over SFWMD right-of-way, a right-of-way access permit is anticipated for this work.

The containment system as well as the structural repairs to the bridge may temporarily impact the functionality (swinging motion) of the swing bridge and the bridge may need to be temporarily fixed in the closed position during construction. The Consultant will contract with a subconsultant to conduct SFWMD right-of-way permitting as well as coordinate with the US Coast Guard if temporary fixing of the bridge in the closed position is anticipated. The cleaning and coating operations may temporarily impact vehicular access across the bridge

No repairs within waters of the state are anticipated so no additional jurisdictional permitting is anticipated as part of this project.

This scope of services does not include bidding phase services. The County requested the Consultant provide limited construction phase services to assist the County in administering construction. It is understood the County will have a County daily inspector on site that can also take temperature and humidity measurement on days the Contractor is conducting coating related operations.

II. SCOPE OF SERVICES

TASK 1 Field Review and Bridge Repair Plans – Under this task the Consultant will review as-built information and develop preliminary plan and elevations views of the bridge that will be utilized in the field review for note taking. The Consultant will conduct a field review to verify the deficiencies identified in the previous evaluation and FDOT Bridge Inspection Report while looking for additional deficiencies. It is understood that the County has a bucket truck that can be made available to the Consultant to facilitate portions of the field work. The field review will focus on the steel truss swing span on the bridge and will review the mechanical components of the bridge.

At the completion of the field review, the Consultant will meet with the County and collaboratively determine if repairs to the mechanical components should be incorporated into the repairs. The Consultant will also bring any newfound deficiencies to the County's attention and collaboratively determine if the County wants to address these deficiencies in the bridge repair plans. The Consultant will also discuss with the County whether it is anticipated that the bridge will need to be temporarily fixed in the closed position during construction.

The Consultant will develop construction documents to facilitate the repairs to the existing bridge. The Construction plans will be submitted to the County at the preliminary (96%) phase and the final phase.

	96%	100%
Cover Sheet	S	F
General Notes	S	F
Summary of Quantities	S	F
Plan & Elevation with Work Identification(s)	S	F
Coating/Containment Notes and Specifications	S	F
Structural Steel Repair Details	S	F
Miscellaneous Repair Detail Sheet(s)	S	F
Representative Repair Field Pictures sheet(s)	S	F

The preliminary completion submittal will also include an opinion of probable construction cost. The opinion of probable construction cost will utilize FDOT historic cost data to estimate the construction cost of the repairs or recent bid estimates whichever results in a more realistic cost of construction.

Based upon comments provided by the County on the preliminary plans (96% submittal), the Consultant will prepare final construction plans and an updated opinion of probable construction cost (OPCC) for bidding and construction. Final plans and OPCC will be submitted to County staff for review. The final design plans shall be signed and sealed by a licensed Florida engineer. All deliverables shall also be submitted in PDF format.

TASK 2 Lead Based Paint Survey – Under this task the Consultant will contract with a

Subconsultant to sample and test the existing steel truss bridge coating system to investigate for lead based or other heavy metals. The subconsultant will provide a report of findings for the tested paint samples.

TASK 3 SFWMD R/W Permitting – Under this task the Consultant will contract with a Subconsultant to coordinate, apply for, and obtain the anticipated Right-of-Way permit through SFWMD. This task will also include technical and preapplication meetings, review of existing permits, and responses to requests for additional information (RAIs). This task also includes an allotment of \$900 for the anticipated permit application fee.

TASK 4 Limited Construction Phase Services – Under this task the Consultant will provide limited professional construction phase services as specifically stated below:

- a. *Visits to Site and Observation of Construction:* Consultant will make up to a total of nine (9) additional visits to the site as directed by County in order to observe the progress of the work.

Below is a list of anticipated site visits:

- Pre-Painting meeting (1 visit)
- Review anchor profile (steel abrasiveness) Testex Tape (2 visits)
- Review primer coat thickness (2 visits)
- Review epoxy intermediate coat thickness (1 visit)
- Review finish coating thickness (2 visits)
- Additional random site visits as requested by the County (1 visit)

Such observations will not be exhaustive or extend to every aspect of Contractor's work. Observations will be limited to spot checking, selective measurement, and similar methods of general observation. Based on information obtained during site visits, Consultant will evaluate whether Contractor's work is generally proceeding in accordance with the Contract Documents, and Consultant will keep County informed of the general progress of the work.

- b. *Clarifications and Interpretations.* Consultant will respond to reasonable and appropriate Contractor requests for information and issue necessary clarifications and interpretations of the Contract Documents. Any orders authorizing variations from the Contract Documents will be made by County.
- c. *Shop Drawings and Samples.* Consultant will review and approve or take other appropriate action in respect to shop drawings and samples and other data which Contractor is required to submit, but only for conformance with the information given in the Contract Documents. Such review and approvals or other action will not extend to means, methods, techniques, equipment choice and usage, schedules, or procedures of construction or to related safety programs. The below shop drawings are anticipated;
- a. Coating Materials Submittal

- b. Other Repair Materials Submittal
 - c. Contractor's Coatings QC Plan
 - d. Limited Review of Contractors Containment Plan
- d. *Substitutes and "or-equal."* Consultant will evaluate and determine the acceptability of substitute or "or-equal" materials and equipment proposed by Contractor in accordance with the Contract Documents.
- e. *Substantial Completion.* Consultant will, after notice from Contractor that it considers the work ready for its intended use, in company with County and Contractor, conduct a site visit to determine if the work is substantially complete. Work will be considered substantially complete following satisfactory completion of all items with the exception of those identified on a final punch list.
- f. *Final Notice of Acceptability of the Work.* Consultant will conduct a final site visit to determine if the completed Work of Contractor is generally in accordance with the Contract Documents and the final punch list.

III. OPTIONAL SERVICES - N/A

TASK 5 Limited Mechanical Repairs – Under this task the Consultant will develop repairs to address the mechanical deficiencies listed in the FDOT Bridge Inspection Report and the Consultant's field review. The Consultant will perform a follow-up field review to collect needed dimensions, photographs, and approach to repairing the mechanical elements of the bridge. The details for the repairs to the mechanical elements will be added to the bridge repair plans developed under Task 1 with supplemental details and specifications on the plans. This task does not include the design or replacement of any mechanical elements on the bridge. The types of mechanical repairs included are limited to cleaning, refurbishment, bolt or pin replacement, or adjusting of existing mechanical equipment.

TASK 6 US Coast Guard Coordination – Under this task the Consultant will contract with a subconsultant to coordinate with the US Coast Guard if it is anticipated that the bridge will need to be fixed in the closed position for a duration of time in construction. The Subconsultant will coordinate with the US Coast Guard and hold technical and pre-application meetings with the Coast Guard as necessary.

IV. REIMBURSABLE EXPENSES – N/A

V. ASSUMPTIONS

The following assumptions have been made for this scope of work:

1. The County will provide all as-built information on the existing bridge.

2. The County will provide access to the bridge.

VI. GENERAL REQUIREMENTS FOR WORK – N/A

VII. PROJECT SCHEDULE

Conduct Field Visit	Within 4 weeks of NTP
Mechanical Elements Coordination with County	Within 2 weeks after Field Visit
96% Bridge Repair Plans and OPCC	20 weeks after Field Visit
SFWMD R/W Permitting	Submit Application within 4 weeks receipt of County's 96% comments
100% Bridge Repair Plans and OPCC	2 weeks after SFWMD Permit Approval

Name of Project:		Bridge Repairs for Torrey Island Swing Bridge over SFWMD Rim Canal				Consultant Name:		Kimley-Horn and Associates, Inc.	
PBC Project Number:		2020602				Consultant Number:		TBD	
						Date:		10/13/2023	
Task Description	Total Staff Hours	Staff Categories				Staff Hours By Activity	Salary Cost By Activity	Average Rate Per Task	
		Chief Engineer	Senior Engineer	Project Engineer	Engineering Intern/Analyst				
		\$84.00	\$75.53	\$58.45	\$39.04				
BASIC SERVICES									
1	Task 1 Field Review and Bridge Repair Plans								
	Review Data and Sketch Plan and Elevation Views	14.0	4.0		10.0	14.0	\$692.52	\$49.47	
	Field Review (3 days @ 10 hrs/day)	60.0	30.0		30.0	60.0	\$3,437.10	\$57.29	
	Mechanical and New deficiencies Review Meeting	9.0	3.0		6.0	9.0	\$460.83	\$51.20	
	Bridge Repair Plan Development (96%)								
	Cover Sheet	6.0	2.0		4.0	6.0	\$307.22	\$51.20	
	General Notes	6.0	2.0		4.0	6.0	\$307.22	\$51.20	
	Summary of Quantities and Pay Item Notes	12.0	4.0		8.0	12.0	\$614.44	\$51.20	
	Bridge Layout and Base file Development	44.0	12.0		32.0	44.0	\$2,155.64	\$48.99	
	Plan & Elevation with Work Identification	72.0	24.0		48.0	72.0	\$3,686.64	\$51.20	
	Coating/Containment Notes	36.0	18.0		18.0	36.0	\$2,062.26	\$57.29	
	Structural Steel Repair Details	48.0	12.0		36.0	48.0	\$2,311.80	\$48.16	
	Miscellaneous Repair Details	48.0	12.0		36.0	48.0	\$2,311.80	\$48.16	
	Representative Repair Pictures	26.0	8.0		18.0	26.0	\$1,306.96	\$50.27	
	OPCC	12.0	4.0		8.0	12.0	\$614.44	\$51.20	
	Bridge Repair Plan Development (100%)	0.0							
	Incorporate County Comments	28.0	8.0		20.0	28.0	\$1,385.04	\$49.47	
	Update Plans for Up to 2 SFWMD RAI's	28.0	8.0		20.0	28.0	\$1,385.04	\$49.47	
4	Task 4 Limited Construction Phase Services								
	Visits to Site & Observation of Construction (9 @ 6 hrs)		54.0			54.0	\$4,078.62	\$75.53	
	Clarifications and Interpretations		8.0			8.0	\$604.24	\$75.53	
	Shop Drawings								
	Coating Materials Submittal		8.0			8.0	\$604.24	\$75.53	
	Contractor's Coating QC Plans		12.0			12.0	\$906.36	\$75.53	
	Limited review of Containment Plans		8.0			8.0	\$604.24	\$75.53	
	Other Repair Materials Submittal		6.0			6.0	\$453.18	\$75.53	
	Substitutions and "or equals"		6.0			6.0	\$453.18	\$75.53	
	Substantial Completion		8.0			8.0	\$604.24	\$75.53	
	Final Notice of Acceptance of the Work		6.0			6.0	\$453.18	\$75.53	
	Total Staff Hours (Basic Services)	449.0	267.0	0.0	298.0	565.0	\$31,800.43	\$56.28	
	Total Staff Cost (Basic Services)		\$0.00	\$20,166.51	\$0.00	\$11,633.92			
OPTIONAL SERVICES									
	Task 5 - Limited Mechanical Repairs								
	Field Review (1 day @ 10 hrs/day)	20.0	10.0		10.0	20.0	\$1,145.70	\$57.29	
	Mechanical Repair Details	60.0	24.0		36.0	60.0	\$3,218.16	\$53.64	
	Representative Mechanical Repair Pictures	12.0	4.0		8.0	12.0	\$614.44	\$51.20	
	Mechanical Repairs OPCC	12.0	4.0		8.0	12.0	\$614.44	\$51.20	
	Total Staff Hours (Optional Services)	0.0	42.0	0.0	62.0	104.0	\$5,592.74	\$53.78	
	Total Staff Cost (Optional Services)		\$0.00	\$3,172.26					
Basic Services:									
Salary Related Costs: \$31,800.43									
Contract Multiplier: 3.00									
<i>Basic Services Kimley-Horn & Associates, Inc.</i> \$95,401.29									
<i>Basic Services Masse Consulting Services, LLC</i> \$9,297.00									
<i>Basic Services Total:</i> \$104,698.29									
Reimbursables:									
Task 2 - Lead Based Paint Survey (Pacifica Engineering Services, LLC) \$2,010.00									
Task 3 - SFWMD R/W Permitting (Masse Consulting Services, LLC) \$900.00									
Reimbursables Total: \$2,910.00									
SBE Participation (With Optional Services)									
SBE Firm	\$	% of Total							
No	Kimley-Horn & Associates, Inc.	\$112,179.51	86.1%						
Yes	Pacifica Engineering Services, LLC	\$2,010.00	1.5%						
Yes	Masse Consulting Services, LLC	\$16,068.00	12.3%						
Total		\$130,257.51	100.0%						
2023602 Task SBE Participation			13.8%						
Optional Services:									
Prime Consultant (Unloaded) \$5,592.74									
Contract Multiplier: 3.00									
Prime Consultant (Loaded) \$16,778.22									
Optional Task 6 - US Coast Guard Coordination (Masse Consulting Services, LLC) \$5,871.00									
Optional Services Total: \$22,649.22									
Grand Total Estimated Fees: \$130,257.51									



July 13, 2023

Sent by Email

Kimley-Horn

1920 Wekiva Way, Suite 200
West Palm Beach, Florida 33411

Attn: Jerry Piccolo, P.E.
Email: jerry.piccolo@kimley-horn.com

Re: Proposal for Lead-Based Paint Survey

Torry Island Bridge
West Canal Street North
Belle Glade, Palm Beach County, Florida 33430
PACIFICA Proposal Number: 601-12014599R11
PBC Project Number: 2020602

Dear Mr. Piccolo:

Thank you for giving us the opportunity to propose our services to you. PACIFICA Engineering Services, LLC (PACIFICA) is submitting this proposal for the performance of a Lead-Based Paint Survey for the One Island Drive rehabilitation project. Presented below is a review of furnished project information, along with the proposed scope of services, schedule, and fee information.

PROJECT UNDERSTANDING

Based on the information provided by the Client, PACIFICA understands a lead-based paint survey is required as part of permitting requirements prior to rehabilitation activities for the One Island Drive bridge project. Project information was gathered from the following sources:

- The Palm Beach County Property Appraiser (PBCPA) website;
- Email from Mr. Piccolo dated July 10, 2023; and,
- Google Maps Street View.

Based on the information identified above, the subject property consists of the Torry Island Bridge located along West Canal Street North in Belle Glade, Florida. The subject property is part of the parcel identified by Parcel Control Number 00-36-43-26-00-000-3060 which is addressed as 1299 North New River Canal Road. According to Mr. Piccolo, the bridge is planned for rehabilitation and a lead-based paint survey is required before the start of the repairs.

SCOPE OF SERVICES

LBP INSPECTION

Our lead-based paint survey will include:

- 1) Work will be performed under the supervision and direction of a Certified Industrial Hygienist (CIH);
- 2) A review of available documents to identify potential locations of suspect lead-based paint (LBP);
- 3) A visual bridge inspection of accessible areas by a trained inspector to identify painted surfaces;
- 4) Record types of painted surfaces, quantities, locations, and physical condition (good, fair, or poor) of accessible suspect LBP. The indicated material quantities will be estimates based on the field observations and should be considered preliminary in nature. These estimates should not be used for bidding purposes and should be verified by a lead abatement contractor;
- 5) Painted and/or coated surfaces which appear similar throughout in terms of color, texture, substrate, and date of application will be treated as homogeneous material for paint sample collection.
- 6) Collection of paint samples of each homogeneous suspect LBP in accordance with guidelines set forth in 40 CFR Part 745. Record sample information on chain-of-custody sheets, which will be signed, dated, and sent with the samples to the accredited laboratory;
- 7) Analysis of the collected paint samples at an accredited laboratory using Atomic Absorption Spectrometry (AAS) in accordance with EPA Method 3050B/700B for Determination of Lead Content in Paint Chip Samples. Additionally, PACIFICA will collect sample for analysis by the Toxicity Characteristics Leaching Procedure (TCLP) specifically for lead leachate by EPA Method SW846.
- 8) Comparison of results to HUD Standard for lead-based paint and EPA regulations. The survey is not designed to meet the requirements of the US Department of Housing and Urban Development.
- 9) Preparation of a LBP Survey Report that describes the sampling methodology, results, conclusions, and recommendations, if necessary; and,
- 10) Unless specifically noted in the proposal, no draft report will be issued. The fee estimate presented under this proposal includes an electronic copy of the Pre-Demolition Asbestos-Containing Material Survey report being submitted upon project completion.

PROJECT ASSUMPTIONS

PACIFICA anticipates the following conditions prior to inspection of the structure and during the completion of the survey:

- All areas requiring inspection will be accessible on the day(s) scheduled for the inspection.
- Collection of paint samples will be limited to those materials readily accessible with available equipment and ladders.



Torry Island Bridge

PACIFICA Proposal No.: 601-12014599R1

July 13, 2023

Page 3

- The survey activities will be completed on a standard work schedule of Monday through Friday 8:00 AM to 5:00 PM (excluding holidays) and a standard five (5) to seven (7) business day laboratory analysis turnaround basis.
- Manlift or specialty ladder equipment rentals are not included.
- The collection of paint samples involves exposing the substrates/surfaces which will not be repaired by PACIFICA. PACIFICA will attempt to collect paint samples from discrete locations.

CLIENT INFORMATION

To facilitate our lead-based paint evaluation and provide you with the best product possible, we request the following information with your authorization to proceed:

- The initial date of construction of the existing structure and any dates of previous renovations; and,
- The type of existing construction materials used and surface finish schedule.

EXCLUSIONS

Inspection and collection of paint samples of suspect LBP will be limited to the painted and coated surfaces readily accessible at the structure. Areas or surfaces that cannot be accessed or sampled will be documented in the final report, if necessary. No attempt will be made to observe conditions in spaces not generally accessible, including but not limited to crawlspaces, pipe chases, or confined spaces.

SCHEDULE

PACIFICA proposes to complete the proposed scope of services and submit the report via electronic mail within fifteen (15) business days following written authorization to proceed. The lead-based paint survey can be completed within five (5) business days of authorization to proceed assuming access to the structure is provided immediately upon receipt of your written authorization to proceed. It is estimated that the survey will take approximately one (1) business day to complete.

FEES

PACIFICA proposes to conduct the LBP Survey for a Lump Sum Fee of **\$2,010.00**.

Fee Breakdown

Survey by Trained Inspector	\$935.00
Laboratory Fees	\$220.00
Report Preparation	\$855.00
Total	\$2,010.00

This fee is based on the proposed collection and laboratory analysis of up to 5 paint samples with a standard laboratory turnaround time of five (5) to seven (7) business days. If it is necessary to



Torry Island Bridge

PACIFICA Proposal No.: 601-12014599R1

July 13, 2023

Page 4

collect more than the proposed 5 paint samples to complete a thorough survey, a unit rate of \$25.00 per sample will apply. PACIFICA will contact you prior to the collection or analysis of any additional samples.

The fee estimate includes an electronic copy of the LBP Survey report being submitted upon project completion. LBP survey reports and signed and sealed electronically. Hard copies can be provided upon request. Compiling and shipping of hard copies via overnight delivery service will be provided at the client's request at a cost of \$200.00 per copy.

PACIFICA appreciates this opportunity to offer our services and we are looking forward to working with you. If you have questions or comments regarding the information in this proposal, need revisions to the proposal, or if we can be of further assistance, please do not hesitate to contact the undersigned.

Respectfully submitted,

Pacifica Engineering ServicesFlorida Certification of Authorization License No. 32328

Paul Saneaux

Senior Project Manager – Environmental Department

psaneaux@pacificaes.com

Attachments: Proposal Authorization & Payment Instructions
General Conditions





MASSE CONSULTING SERVICES, LLC
PROVIDING COST EFFECTIVE & SAFE DESIGNS

Date: August 11, 2023 (revised)
August 9, 2023 (revised)
July 31, 2023 (revised)
July 20, 2023

To: Jerry Piccolo, PE
Kimley-Horn and Associates, Inc.
1920 Wekiva Way, Suite 200
West Palm Beach, FL 33411

Re: TORRY ISLAND ROAD BRIDGE REHABILITATION
Palm Beach County Project No. 2020602

Dear Mr. Piccolo:

Pursuant to your email request dated July 10, 2023, Masse Consulting Services, LLC (Masse Consulting) is pleased to provide you with this scope of services for professional services for the above-referenced project and as described below.

Project Description

Kimley-Horn and Associates, Inc., the prime consultant to Palm Beach County, will prepare construction plans for the rehabilitation of Torry Island Road bridge over the Lake Okeechobee Rim Canal within the City of Belle Glade. Since the Lake Okeechobee Rim Canal is owned and maintained by the South Florida Water Management District (SFWMD), the project will require a Right of Way Occupancy Permit with SFWMD. Also, the bridge may require recoating and repairing a few bearings, which will cause the bridge to be temporarily out of service, and the channel may be limited in vessel traffic. As a sub-consultant to Kimley-Horn and Associates, Inc., Masse Consulting will provide **Permits and Environmental** services coordinating with the above agencies.

Permits and Environmental

Masse Consulting will prepare and submit SFWMD and US Coast Guard permit applications. All plans, permit sketches, and their modifications will be provided by the prime consultant. The SFWMD permitting fee will be paid by Masse Consulting and reimbursed by the prime consultant. The specific tasks are:

1. Basic Services-obtain SFWMD Right of Way Occupancy Permit
 - Existing Permit Analysis
 - Complete and Submit R/W Permit Application
 - Technical and pre-application meetings

2. Optional Services-obtain US Coast Guard Bridge Permit
 - Complete and Submit Bridge Permit Application

Excluded Services

The following permits and services are excluded:

- SFWMD ERP Permit

TORRY ISLAND ROAD BRIDGE REHABILITATION
Palm Beach County Project No. 2020602

-
- SFWMD Water Use Permit
 - FDEP Permit
 - USACE Coordination and Permit
 - City of Belle Glade Permit

We are looking forward to working with you on this project. Should you have any questions, please feel free to contact us.

Sincerely,



Basher Khan, P.E.
Vice President

Project Staff Hour Summary

Name of Project: Torrey Island Road Bridge Rehabilitation						SubConsultant Name: MASSE CONSULTING SERVICES, LLC				
PBC Project Number: 2020602						SubConsultant Proj. Number: 2023-116				
						Date: 10/12/2023				
Task Description	Total Staff Hours	Staff Categories					Staff Hours By Activity	Salary Cost By Activity	Average Rate Per Task	
		Project Manager	Senior Engineer	Project Engineer	Engineering Intern	CADD/Computer Technician				
		\$67.00	\$62.00	\$47.00	\$33.00	\$30.00				
BASIC SERVICES										
6	Permits and Environmental (SFWMD Right of Way Occupancy Permit)	60	12	15	21	6	6	60	\$3,099.00	\$51.65
Total Staff Hours (Basic Services)		60	12	15	21	6	6	60		\$51.65
Total Staff Cost (Basic Services)			\$804.00	\$930.00	\$987.00	\$198.00	\$180.00		\$3,099.00	
OPTIONAL SERVICES										
	Coordination with the US Coast Guard	38	8	9	13	4	4	38	\$1,957.00	\$51.50
Total Staff Cost (Optional Services)			\$536.00	\$558.00	\$611.00	\$132.00	\$120.00		\$1,957.00	

Basic Services:	
Salary Related Costs: Permits and Environmental (SFWMD Right of Way Occupancy)	\$3,099.00
Contract Multiplier	3.00
Basic Services Total	\$9,297.00

Reimbursables:	
Permit Fees -SFWMD Right of Way Occupancy	\$900.00
Reimbursables Total	\$900.00

Optional Services:	
Salary Related Costs:	\$1,957.00
Contract Multiplier	3.00
Optional Services Total	\$5,871.00

Total Estimated Fees \$16,068.00

Project Activity 6: Permits and Environmental						
Task No.	Task	Units	No. of Units	Hours/ Units	Total Hours	Comments
6.3	Existing Permit Analysis	LS	1	8	8	Review existing permit (8 hrs)
6.4	Complete and Submit R/W Permit Application	LS	1	40	40	Prepare and submit WMD permit application (30 hrs), complete RAI responses up to two rounds (10 hrs). Prime consultant is in charge of provide the supporting documents per scope proposed.
6.7	Technical and pre-application meetings	EA	3	4	12	SFWMD-2 meetings, PBC-1; total 3 meetings x 2 persons x 2 hrs each meeting (incl. preparation and travel time)
6. Permits and Environmental Total					60	
	Complete and submit the US Coast Guard bridge permit application	LS	1	38	38	Optional Services: prepare and submit permit application (30 hrs); and complete RAI responses up to two rounds (8 hrs)

REIMBURSABLE PERMIT FEE

Name of Project: Torry Island Road Bridge Rehabilitation

County: Palm Beach County

Project No.: 2020602

Agency	Amount	Comment
South Florida Water Management District Right of Way Occupancy Permit	\$900.00	Category "NGP-4"
Total Fee	\$900.00	



SOUTH FLORIDA WATER MANAGEMENT DISTRICT RIGHT OF WAY OCCUPANCY PERMITS FEE SCHEDULE

NOTICE GENERAL PERMIT FEE SCHEDULE

Category "NGP-1" – NO FEE

This category covers the following types of uses of the right of way which are proposed by individual lot owners in conjunction with adjacent domestic, single family residential land use, and which comply with all District ROW rules and criteria:

- Bank Stabilization
- Bulkheads/Seawalls
- Fences
- Gazebos/Chickee Huts
- Landscaping
- Docks, Mooring Facilities, and Associated Appurtenances
- Sheds (Temporary Only)
- Utility Services to Docks
- Vegetation Clearing/Removal
- Walkways, Patio Stones, and Similar At-Grade Installations

Existing, unpermitted facilities which would otherwise be eligible for a NGP-1 shall pay the category SP-1 fee.

Category "NGP-2" - \$150.00

This category covers the following types of uses of the right of way which are proposed by homeowner associations and condominium associations which are adjacent to more than one individual lot or dwelling unit, and which comply with all District ROW rules and criteria:

- Bank Stabilization
- Bulkheads/Seawalls
- Fences
- Gazebos/Chickee Huts
- Landscaping
- Docks, Mooring Facilities, and Associated Appurtenances
- Sheds (Temporary Only)
- Utility Services to Docks
- Vegetation Clearing/Removal
- Walkways, Patio Stones, and Similar At-Grade Installations

Existing, unpermitted facilities which would otherwise be eligible for a NGP-2 shall pay the category SP-2 fee.

Category "NGP-3" - \$300.00

This category covers the following types of proposed facilities and uses of the right of way which are proposed by developers, builders, corporate entities, utilities, county, state or local entities, and which comply with all District ROW rules and criteria.

- Access - Temporary Use of the Right of Way
- Bank Stabilization
- Bulkheads/Seawalls
- Docks, Mooring Facilities, and Associated Appurtenances
- Fences
- Filming/Motion Picture Production/Photo Shoot
- Gazebos/Chickee Huts
- Landscaping
- Monitoring Wells
- Pipe and Culvert Connections for Irrigation and/or Drainage
- Sheds (Temporary Only)
- Signs (Informational/Regulatory)
- Storage – Temporary Office/Trailer, Construction Material and/or Equipment
- Utility/Communication Installations (Aerial, Subaqueous, Pile-Supported, Parallel Runs, Underground Feeds, Poles, Anchors, Down Guys, Attachment to Bridges)
- Utility Services to Docks
- Vegetation Clearing/Removal
- Walkways, Patio Stones and Similar At-Grade Installations
- All Other Uses Not Covered in Categories NGP-1, NGP-2, and NGP-4

Existing, unpermitted facilities which would otherwise be eligible for a NGP-3 shall pay the category SP-3 fee.

Category "NGP-4" - \$900.00

This category covers the following types of uses of the right of way which comply with all District ROW rules and criteria:

- Bridges – Vehicular (Private and Public), Golf Cart, Pedestrian (Pile-Supported and Free-Span Only); Excludes Culvert Bridges

Existing, unpermitted facilities which would otherwise be eligible for an NGP-4 shall pay the category SP-4 fee.

STANDARD PERMIT FEE SCHEDULE

Category "SP-1" – \$75.00

This category covers the following types of uses of the right of way by individual lot owners in conjunction with adjacent domestic, single family residential land use, and which do not meet District ROW rules and criteria:

- Bank Stabilization
- Bulkheads/ Seawalls
- Docks, Mooring Facilities, and Associated Appurtenances
- Fences
- Gazebos/Chickee Huts
- Landscaping
- Sheds (Temporary Only)
- Utility Services to Docks
- Vegetation Clearing/Removal
- Walkways, Patio Stones and Similar At-Grade Installations

As well as the following uses:

- Boat Ramps
- Bank Reshaping

Category "SP-2" - \$300.00

This category covers the following types of uses of the right of way by homeowner associations and condominium associations that are adjacent to more than one individual lot or dwelling unit and which do not comply with District ROW rules and criteria:

- Bank Stabilization
- Bulkheads/ Seawalls
- Docks, Mooring Facilities, and Associated Appurtenances
- Fences
- Gazebos/Chickee Huts
- Landscaping
- Sheds (Temporary Only)
- Utility Services to Docks
- Vegetation Clearing/Removal
- Walkways, Patio Stones, and Similar At-Grade Installations

As well as the following uses:

- Boat Ramps
- Bank Reshaping

Category “SP-3” - \$625.00

This category covers the following types of uses of the right of way by developers, builders, corporate entities, utilities, county, state or local entities, and which do not comply with all District ROW rules and criteria:

- Access - Temporary Use of the Right of Way
- Bank Stabilization
- Bulkheads/ Seawalls
- Culvert Connections
- Docks, Mooring Facilities and Appurtenances
- Fences
- Filming/Motion Picture Production/Photo Shoot
- Gazebos/Chickee Huts
- Landscaping
- Monitoring Wells
- Project Culverts - Use of or Connection to
- Sheds (Temporary Only)
- Signs (Informational/Regulatory)
- Storage – Temporary Office/Trailer, Construction Material and/or Equipment
- Utility/Communication Installations (Aerial, Subaqueous, Pile-Supported, Parallel Runs, Underground Feeds, Poles, Anchors, Down Guys, Attachment to Bridges)
- Utility Services to Docks
- Vegetation Clearing/Removal
- Walkways, Patio Stones, and Similar At-Grade Installations

As well as the following uses:

- Boat Ramps
- Bank Reshaping
- Dredging/Excavation
- Mitigation and Environmental Enhancement
- Petroleum, Petroleum Product and Pipeline Crossings
- All Other Uses Not Covered in Categories SP-1, SP-2 and SP-4

Category “SP-4” - \$1750.00

This category covers the following types of uses of the right of way which do not comply with District ROW rules and criteria:

- Bridges – Vehicular (Private and Public), Golf Cart, Pedestrian (Pile-Supported or Free- Span)

As well as the following uses:

- Culvert Bridges
- Linear Parks, Greenways and Similar Public Parks and Recreation Projects
- Marinas and Associated Facilities

OEBO SCHEDULE 1

SOLICITATION/PROJECT/BID NAME: Bridge Repairs for Torry Island Road Swing Bridge over SFWMD Rim Canal
 SOLICITATION OPENING/SUBMITTAL DATE: June 14, 2022

SOLICITATION/PROJECT/BID NO.: 2020602
 COUNTY DEPARTMENT: Palm Beach County Engineering & Public Works Department

Section A PLEASE LIST THE DOLLAR AMOUNT OR PERCENTAGE OF WORK TO BE COMPLETED BY THE PRIME CONTRACTOR/CONSULTANT* ON THE PROJECT:

NAME OF PRIME RESPONDENT/BIDDER: Kimley-Horn and Associates, Inc. ADDRESS: 1920 Wekiva Way, Suite 200, West Palm Beach, FL 33411

CONTACT PERSON: Marwan Mufleh, P.E., Principal/Senior Vice President PHONE NO.: 561-840-0850 E-MAIL: marwan.mufleh@kimley-horn.com

PRIME'S DOLLAR AMOUNT OR PERCENTAGE OF WORK: 86.2%
 *SMWBE Prime's must include their percentage or dollar amount in the Total Participation line under section B.

Non-SBE
 MBE
 WBE
 SBE

Section B PLEASE LIST THE DOLLAR AMOUNT OR PERCENTAGE OF WORK TO BE COMPLETED BY ALL SUBCONTRACTORS/SUBCONSULTANTS ON THE PROJECT BELOW:

Subcontractor/Sub consultant Name	(Check all Applicable Categories)				DOLLAR AMOUNT OR PERCENTAGE OF WORK					
	Non-SBE	MBE	WBE	SBE	Black	Hispanic	Women	Caucasian	Asian	Other
		Minority Business	Women Business	Small Business						
1. Kimley-Horn and Associates, Inc. 1920 Wekiva Way, Suite 200 West Palm Beach, FL 33411	<input checked="" type="checkbox"/>	<input type="checkbox"/>	<input type="checkbox"/>	<input type="checkbox"/>						<u>86.2%</u>
2. Pacifica Engineering Services, LLC 601 N. Congress Avenue, Suite 303 Delray Beach, FL 33445	<input type="checkbox"/>	<input checked="" type="checkbox"/>	<input type="checkbox"/>	<input type="checkbox"/>	<u>1.5%</u>					
3. Masse Consulting Services, LLC 2101 Vista Parkway, Suite 277 West Palm Beach, FL 33411	<input type="checkbox"/>	<input checked="" type="checkbox"/>	<input type="checkbox"/>	<input checked="" type="checkbox"/>	<u>12.3%</u>					
4.	<input type="checkbox"/>	<input type="checkbox"/>	<input type="checkbox"/>	<input type="checkbox"/>						
5.	<input type="checkbox"/>	<input type="checkbox"/>	<input type="checkbox"/>	<input type="checkbox"/>						
Total					<u>13.8%</u>					<u>86.2%</u>

(Please use additional sheets if necessary)
 Total Bid/Offer Price \$ 130,257.51

Total Certified S/M/WBE Participation \$ 13.8%

I hereby certify that the above information is accurate to the best of my knowledge: Marwan Mufleh, P.E.  Principal/Senior V.P.
 Name & Authorized Signature Title

- Note:**
- The amount listed on this form for a Subcontractor/sub consultant must be supported by price or percentage listed on the properly executed Schedule 2 or attached signed proposal.
 - Only those firms certified by Palm Beach County at the time of solicitation due date are eligible to meet the established OEBO Affirmative Procurement Initiative (API). Please check the applicable box and list the dollar amount or percentage under the appropriate demographic category.
 - Modification of this form is not permitted and will be rejected upon submittal.

A completed Schedule 2 is a binding document between the Prime Contractor/consultant and a Subcontractor/subconsultant (for any tier) and should be treated as such. The Schedule 2 shall contain bolded language indicating that by signing the Schedule 2, both parties recognize this Schedule as a binding document. All Subcontractors/subconsultants, including any tiered Subcontractors/subconsultants, must properly execute this document. Each properly executed Schedule 2 must be submitted with the bid/proposal.

SOLICITATION/PROJECT NUMBER: 2020602

SOLICITATION/PROJECT NAME: Bridge Repairs for Torry Island Road Swing Bridge over SFWMD Rim Canal

Prime Contractor: Kimley-Horn and Associates, Inc. Subcontractor: _____

(Check box(s) that apply)

SBE WBE MBE M/WBE Non-S/M/WBE Date of Palm Beach County Certification (if applicable): _____.

The undersigned affirms they are the following (select one from each column **if applicable**):

Column 1	Column 2	Column 3
<input checked="" type="checkbox"/> Male <input type="checkbox"/> Female	<input type="checkbox"/> African-American/Black <input type="checkbox"/> Asian American <input checked="" type="checkbox"/> Caucasian American	<input type="checkbox"/> Supplier
	<input type="checkbox"/> Hispanic American <input type="checkbox"/> Native American	

S/M/WBE PARTICIPATION – S/M/WBE Primes must document all work to be performed by their own work force on this form. Failure to submit a properly executed Schedule 2 for any **S/M/WBE** participation may result in that participation not being counted. Specify in detail, the scope of work to be performed or items supplied with the dollar amount and/or percentage for each work item. S/M/WBE credit will only be given for the areas in which the S/M/WBE is certified. A detailed proposal may be attached to a properly executed Schedule 2.

Line Item	Item Description	Unit Price	Quantity/ Units	Contingencies/ Allowances	Total Price/Percentage
1	Field Review and Bridge Repair Plans	\$69,116.85	1		\$69,116.85
4	Limited Construction Phase Services	\$26,284.44	1		\$26,284.44
5	Limited Mechanical Repairs	\$16,778.22	1		\$16,778.22

The undersigned Subcontractor/subconsultant is prepared to self-perform the above-described work in conjunction with the aforementioned project at the following total price or percentage: \$112,179.51

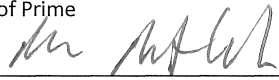
If the undersigned intends to subcontract any portion of this work to another Subcontractor/subconsultant, please list the business name and the amount below accompanied by a separate properly executed Schedule 2.

Name of 2nd/3rd tier Subcontractor/subconsultant

Price or Percentage: _____

Kimley-Horn and Associates, Inc.

Print Name of Prime

By: 
Authorized Signature

Marwan Mufleh, P.E.

Print Name

Principal/Senior Vice President

Title

Date: 10/19/23

Print Name of Subcontractor/subconsultant

By: _____
Authorized Signature

Print Name

Title

Date:

A completed Schedule 2 is a binding document between the Prime Contractor/consultant and a Subcontractor/subconsultant (for any tier) and should be treated as such. The Schedule 2 shall contain bolded language indicating that by signing the Schedule 2, both parties recognize this Schedule as a binding document. All Subcontractors/subconsultants, including any tiered Subcontractors/subconsultants, must properly execute this document. Each properly executed Schedule 2 must be submitted with the bid/proposal.

SOLICITATION/PROJECT NUMBER: 2020602
 SOLICITATION/PROJECT NAME: Bridge Repairs for Torry Island Road Swing Bridge over SFWMD Rim Canal

Prime Contractor: Kimley-Horn and Associates, Inc. Subcontractor: Pacifica Engineering Services, LLC

(Check box(s) that apply)

SBE WBE MBE M/WBE Non-S/M/WBE Date of Palm Beach County Certification (if applicable): 10-25-21 to 10-24-24

The undersigned affirms they are the following (select one from each column if applicable):

Column 1	Column 2	Column 3
<input checked="" type="checkbox"/> Male <input type="checkbox"/> Female	<input checked="" type="checkbox"/> African-American/Black <input type="checkbox"/> Asian American <input type="checkbox"/> Caucasian American	<input type="checkbox"/> Supplier
	<input type="checkbox"/> Hispanic American <input type="checkbox"/> Native American	

S/M/WBE PARTICIPATION – S/M/WBE Primes must document all work to be performed by their own work force on this form. Failure to submit a properly executed Schedule 2 for any S/M/WBE participation may result in that participation not being counted. Specify in detail, the scope of work to be performed or items supplied with the dollar amount and/or percentage for each work item. S/M/WBE credit will only be given for the areas in which the S/M/WBE is certified. A detailed proposal may be attached to a properly executed Schedule 2.

Line Item	Item Description	Unit Price	Quantity/ Units	Contingencies/ Allowances	Total Price/Percentage
2	Lead Based Paint Survey	\$2,010.00	1		\$2,010.00

The undersigned Subcontractor/subconsultant is prepared to self-perform the above-described work in conjunction with the aforementioned project at the following total price or percentage: \$2,010.00

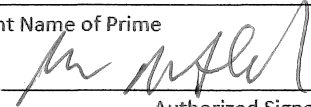
If the undersigned intends to subcontract any portion of this work to another Subcontractor/subconsultant, please list the business name and the amount below accompanied by a separate properly executed Schedule 2.

 Name of 2nd/3rd tier Subcontractor/subconsultant

Price or Percentage: _____

Kimley-Horn and Associates, Inc.

Print Name of Prime

By: 

Authorized Signature

Marwan Mufleh, P.E.

Print Name

Principal/Senior Vice President

Title

Date: 10/23/23

Pacifica Engineering Services, LLC

Print Name of Subcontractor/subconsultant

By: 

Authorized Signature

Wesley Foster

Print Name

President

Title

Date: 10/19/2023

OEBO LETTER OF INTENT – SCHEDULE 2

A completed Schedule 2 is a binding document between the Prime Contractor/consultant and a Subcontractor/subconsultant (for any tier) and should be treated as such. The Schedule 2 shall contain bolded language indicating that by signing the Schedule 2, both parties recognize this Schedule as a binding document. All Subcontractors/subconsultants, including any tiered Subcontractors/subconsultants, must properly execute this document. Each properly executed Schedule 2 must be submitted with the bid/proposal.

SOLICITATION/PROJECT NUMBER: 2020602

SOLICITATION/PROJECT NAME: Bridge Repairs for Torry Island Road Swing Bridge over SFWMD Rim Canal

Prime Contractor: Kimley-Horn and Associates, Inc. Subcontractor: Masse Consulting Services, LLC

(Check box(s) that apply)

SBE WBE MBE M/WBE Non-S/M/WBE Date of Palm Beach County Certification (if applicable): 3/11/21 to 3/10/24

The undersigned affirms they are the following (select one from each column if applicable):

Column 1	Column 2	Column 3
<input checked="" type="checkbox"/> Male <input type="checkbox"/> Female	<input checked="" type="checkbox"/> African-American/Black <input type="checkbox"/> Asian American <input type="checkbox"/> Hispanic American <input type="checkbox"/> Native American	<input type="checkbox"/> Caucasian American <input type="checkbox"/> Supplier

S/M/WBE PARTICIPATION – S/M/WBE Primes must document all work to be performed by their own work force on this form. Failure to submit a properly executed Schedule 2 for any S/M/WBE participation may result in that participation not being counted. Specify in detail, the scope of work to be performed or items supplied with the dollar amount and/or percentage for each work item. S/M/WBE credit will only be given for the areas in which the S/M/WBE is certified. A detailed proposal may be attached to a properly executed Schedule 2.

Line Item	Item Description	Unit Price	Quantity/ Units	Contingencies/ Allowances	Total Price/Percentage
3	SFWMD R/W Permitting	\$10,197.00	1		\$10,197.00
6	US Coast Guard Coordination	\$5,871.00	1		\$5,871.00

The undersigned Subcontractor/subconsultant is prepared to self-perform the above-described work in conjunction with the aforementioned project at the following total price or percentage: \$16,068.00

If the undersigned intends to subcontract any portion of this work to another Subcontractor/subconsultant, please list the business name and the amount below accompanied by a separate properly executed Schedule 2.

Name of 2nd/3rd tier Subcontractor/subconsultant

Price or Percentage: _____

Kimley-Horn and Associates, Inc.

Print Name of Prime

By: 
Authorized Signature

Marwan Mufleh, P.E.

Print Name

Principal/Senior Vice President

Title

Date: 10/19/2023

Masse Consulting Services, LLC

Print Name of Subcontractor/subconsultant

By: 
Authorized Signature

Md Abul Basher Khan

Print Name

Vice President

Title

Date: 10/19/2023

PROJECT HISTORY

Exhibit D

Torry Island Swing Bridge Repairs					
Project# 2020602					
Authorization	Supplement	Date Approved	Total Amount	SBE Amount	SBE %
BCC	Original CSA	Pending	\$ 130,257.51	\$ 18,078.00	13.8%
Project Totals			\$ 130,257.51	\$ 18,078.00	13.8%



**Palm Beach County
Compliance Summary Report**

Vendor Number	Vendor Name	AM Best Rating	Insurance Carrier	Policy #	Eff. Date	Exp. Date	Coverage	Contract Number	Contract Name
DX00001963	Kimley-Horn and Associates, Inc.		Compliant					R2022-	Kimley-Horn and Associates, Inc.
		Ag , XV	Allied World Assurance Company (U.S.) Inc.	03127930	4/1/2023	4/1/2024	Excess Liability		
		Ap , XV	National Union Fire Insurance Company of Pittsburg	GL5268169	4/1/2023	4/1/2024	General Liability		
		Ar , XV	New Hampshire Insurance Company	WC015893685	4/1/2023	4/1/2024	Workers Comp		

Risk Profile : Standard - Professional Services
Required Additional Insured : Palm Beach County Board of County Commissioners
Ownership Entity :