

**PALM BEACH COUNTY
BOARD OF COUNTY COMMISSIONERS
AGENDA ITEM SUMMARY**

Meeting Date: April 2, 2024 Consent Regular
 Workshop Public Hearing
 Submitted By: Department of Airports

I. EXECUTIVE BRIEF

Motion and Title: Staff recommends motion to approve:

- (A) Amendment No. 11 (Amendment) to the General Consulting Agreement with RS&H, Inc. (RS&H) for Consulting/Professional Services in the amount of \$281,451.37 for the continued performance of professional services related to the Palm Beach County Airports Capital Improvement Program; and
- (B) A Budget Transfer in the amount of \$281,452 in the Airport's Improvement and Development Fund to provide budget for the Amendment No. 11, including a transfer from Reserves in the amount of \$281,452.

Summary: The Consulting Agreement (Agreement) with RS&H was approved by the Board of County Commissioners (Board) on May 7, 2019 (R-2019-0612) in the amount of \$2,004,570.58. Amendment No. 1 was approved by the Board on May 5, 2020 (R-2020-0414), increasing the amount of the Agreement by \$2,304,608.30. Amendment No. 2 was approved by the Board on October 20, 2020 (R-2020-1607), increasing the amount of the Agreement by \$3,196,990.03. Amendment No. 3 was approved by the Board on May 4, 2021 (R-2021-0576), exercising the first one-year renewal option. Amendment No. 4 was approved by the Board on June 15, 2021 (R-2021-0844), increasing the amount of the Agreement by \$2,644,110.87. Amendment No. 5 was approved by the Board on March 22, 2022 (R-2022-0263), increasing the amount of the Agreement by \$1,325,943.87 and exercising the second one-year renewal option. Amendment No. 6 was approved by the Board on January 24, 2023 (R-2023-0103), increasing the amount of the Agreement by \$1,175,706.57. Amendment No. 7 was approved by the Board on April 4, 2023 (R-2023-0447), increasing the amount of the Agreement by \$1,109,482.80. Amendment No. 8 was approved by the Board on April 18, 2023 (R-2023-0532), increasing the amount of the Agreement by \$1,106,284.38. Amendment No. 9 was approved by Board on October 17, 2023, increasing the amount of the Agreement by \$313,808.36. Approval of Amendment No. 10 was approved by the Board on November 7, 2023 (R-2023-1595), increasing the amount of the Agreement by \$395,406.12. Scope modifications reduced the contract amount by \$231,653.11. Approval of this Amendment will increase the amount of the Agreement by \$281,451.37, resulting in a cumulative contract value of \$15,626,710.14. This Amendment includes the following tasks: Task I Services – Switchgear Phase 2 Additional Services – Substation A Design, Concourse B Expansion Additional Services – Duct Bank Conflict, and Task III Services – Miscellaneous Additional Services for Ongoing Tasks. This Amendment provides for supplemental design services associated with tasks previously assigned to RS&H under the Agreement. RS&H is a Jacksonville, Florida based firm; however, the majority of the work will be managed through its Fort Lauderdale, Florida offices. A Disadvantaged Business Enterprise (DBE) goal of 18% was established for this Agreement. RS&H, Inc. committed to 23% DBE participation. The DBE participation for this Amendment is 0.80%. The cumulative DBE participation, including this Amendment, is 32.13%. **Countywide (AH)**

Background and Justification: In order to carry out the Capital Improvement Program for the County's Airport System, the Department of Airports requires professional planning and design engineering services. Article 2 of the Agreement authorizes amendments to the Agreement to expand the scope of services to include additional services needed to complete tasks authorized prior to the expiration of the Agreement. Task I-22-PBI-R-028 Switchgear Replacement Phase 2 requires additional services to update the design to provide for the relocation of Substation A and construction of an enclosure to house the equipment. Task I-21-PBI-R-023 PBI Concourse B Expansion requires additional services for design modifications due to an unforeseen conflict between a communication duct bank and sanitary sewer line under the Concourse B breezeway, requiring the construction of a small lift station in lieu of a gravity drain line.

Attachments:

- 1. Amendment No. 11 with RS&H, Inc. – 2 Originals
- 2. DBE Goal Information
- 3. Budget Transfer

Recommended By: C. Laura Beebe Department Director 3-5-24 Date
 Approved By: Paul For County Administrator 3/15/24 Date

II. FISCAL IMPACT ANALYSIS

A. Five Year Summary of Fiscal Impact:

Fiscal Years	<u>2024</u>	<u>2025</u>	<u>2026</u>	<u>2027</u>	<u>2028</u>
Capital Expenditures	\$281,452				
Operating Costs					
External Revenues (Grants)					
Program Income (County)					
In-Kind Match (County)					
NET FISCAL IMPACT	\$281,452				

ADDITIONAL FTE
POSITIONS (Cumulative) _____

Is Item Included in the Current Budget? Yes _____ No X
 Does this item include the use of federal funds? Yes _____ No X
 Does this item include the use of state funds? Yes X No _____

Budget Account No: Fund 4111 Department 121 Unit A107 Object 6505
 Fund 4111 Department 121 Unit A 342 Object 6504
 Fund 4111 Department 121 Unit A 394 Object 6504/ 6505

Reporting Category _____

B. Recommended Sources of Funds/Summary of Fiscal Impact:

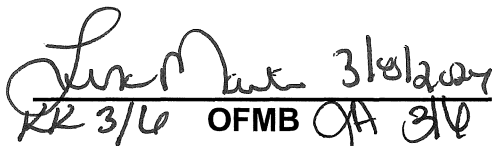
A Budget Transfer in the Airport's Improvement and Development fund in the amount of \$281,452; including a transfer from Reserves in the amount of \$281,452.

PFC and grant reimbursements will be determined as invoices are processed.

C. Departmental Fiscal Review: 

III. REVIEW COMMENTS

A. OFMB Fiscal and/or Contract Development and Control Comments:


 RR 3/6 OFMB OA 3/6


 Contract Dev. and Control
 TRB 3/13/24

B. Legal Sufficiency:


 3/14/24
 Assistant County Attorney

C. Other Department Review:

 Department Director

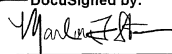
CERTIFICATION OF
AUTHORIZING SIGNATORY FOR
PALM BEACH COUNTY CONTRACTS

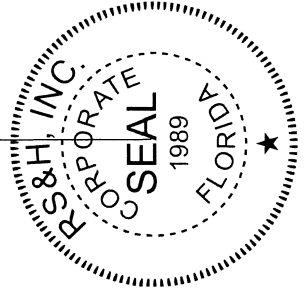
I, Marlon F. Starr, Executive Vice President, Chief Legal Officer, and Corporate Secretary of RS&H, Inc., a Florida Corporation (the "Corporation"), hereby certify that:

- (1) The Corporation is duly organized and existing under the laws of the State of Florida, and
- (2) Andrew P. Wheeler is an Executive Vice President of the Corporation and is authorized and empowered to execute in the name of the Corporation all proposals, agreements, supplements, contracts, and other documents he may deem necessary or appropriate, in connection with Palm Beach County, Florida.

I further certify that the foregoing authorization shall remain in full force and effect until written notice of amendment or rescission shall have been received by the County, and that receipt of such notice shall not affect any action taken by the authorized officer prior thereto.

IN WITNESS WHEREOF, I have hereto subscribed my name and affixed the Seal of the Company this 6th day of February, 2023.

DocuSigned by:

Marlon F. Starr
Corporate Secretary





3125 W Commercial Blvd, Suite 130
Fort Lauderdale, FL 33309

☎ 954-474-3005
☎ 954-474-3006
rsandh.com

February 16, 2024

Palm Beach County Department of Airports
ATTN: Mr. Michael Giambone, Director of Airports Planning
846 Palm Beach International Airport
West Palm Beach, Florida 33406-1470

**RE: Airport Facilities & Systems Planning, Design, Engineering and Construction
Management Professional Services for Palm Beach County Department of Airports
AMENDMENT NO. 11 TO CONTRACT**

Dear Mr. Giambone,

RS&H is pleased to submit for your review and approval the Amendment No. 11 for the *Airport Facilities & Systems Planning, Design, Engineering and Construction Management Professional Services* project at Palm Beach International Airport.

Amendment 11 is for additional services needed to continue performance of on-going services related to Tasks authorized prior to expiration of contract.

Please contact me if any questions regarding this transmittal. My direct phone is (904) 256-2437.

Respectfully submitted,

RS&H, Inc.

DocuSigned by:


4C8126E58A4642F...
Pat Hargrove, AIA NCARB
Vice President, Aviation

Cc: Andrew P. Wheeler

**AMENDMENT NO. 11 TO CONTRACT
BETWEEN
PALM BEACH COUNTY DEPARTMENT OF AIRPORTS
AND
RS&H, INC.
FOR
FOR CONSULTING / PROFESSIONAL SERVICES
AT
PALM BEACH COUNTY AIRPORTS**

This Amendment No. 11 to the Contract is made as of the _____ day of _____, 2024, by and between **Palm Beach County**, a Political Subdivision of the State of Florida, by and through its Board of Commissioners, hereinafter referred to as the **COUNTY**, and **RS&H, Inc.**, [] an individual, [] partnership, [X] a corporation authorized to do business in the State of Florida, hereinafter referred to as the **CONSULTANT**, whose Federal Tax I.D. number is 59-2986466.

WITNESSETH

WHEREAS, on May 7, 2019, the COUNTY entered into an Agreement (R2019-0612) with the CONSULTANT for the CONSULTANT to provide Consulting / Professional Services for the Palm Beach County Department of Airports at Palm Beach County Airports (PBI, F45, LNA, & PHK); and

WHEREAS, on May 5, 2020, the COUNTY entered into an Amendment No. 1 (R-2020-0414) with the CONSULTANT to provide additional professional services for the Department of Airports, Palm Beach County, in accordance with Article 26 of the original Agreement; and

WHEREAS, on October 20, 2020, the COUNTY entered into an Amendment No. 2 (R-2020-1607) with the CONSULTANT to provide additional professional services for the Department of Airports, Palm Beach County, in accordance with Article 26 of the original Agreement; and

WHEREAS, on May 4, 2021, the COUNTY entered into an Amendment No. 3 (R-2021-0576) with the CONSULTANT to exercise the first one (1) year renewal option for the continuation of services; and

WHEREAS, on June 15, 2021, the COUNTY entered into an Amendment No. 4 (R-2021-0844) with the CONSULTANT to provide additional professional services for the Department of Airports, Palm Beach County, in accordance with Article 26 of the original Agreement; and

WHEREAS, on March 22, 2022, the COUNTY entered into an Amendment No. 5 (R-2022-0263) with the CONSULTANT to exercise the second and final one (1) year renewal option for the continuation of services and to provide additional professional services for the Department of Airports, Palm Beach County, in accordance with Article 26 of the original Agreement; and

WHEREAS, on January 24, 2023, the COUNTY entered into an Amendment No. 6 (R-2023-0103) with the CONSULTANT to provide additional professional services for the Department of Airports, Palm Beach County, in accordance with Article 26 of the original Agreement;

WHEREAS, on April 4, 2023, the COUNTY entered into an Amendment No. 7 (R-2023-0447) with the CONSULTANT to provide additional professional services for the Department of Airports, Palm Beach County, in accordance with Article 26 of the original Agreement;

WHEREAS, on April 18, 2023, the COUNTY entered into an Amendment No. 8 (R-2023-0532) with the CONSULTANT to provide additional professional services for the Department of Airports, Palm Beach County, in accordance with Article 26 of the original Agreement;

WHEREAS, on October 17, 2023, the COUNTY entered into an Amendment No. 9 (R-2023-1540) with the CONSULTANT to provide additional professional services for the Department of Airports, Palm Beach County, in accordance with Article 26 of the original Agreement;

WHEREAS, on November 7, 2023, the COUNTY entered into an Amendment No. 10 (R-2023-1595) with the CONSULTANT to provide additional professional services for the Department of Airports, Palm Beach County, in accordance with Article 26 of the original Agreement;

WHEREAS, Article 26 of the Contract requires an amendment when the parties are able to define additional services and the parties have now defined those services,

NOW THEREFORE, in consideration of the mutual covenants herein contained, and such other good and valuable consideration, the receipt of which the parties hereby acknowledge, the parties agree to the following terms and conditions:

1. The parties hereby agree to amend the Contract to include the Scope of Services and Fees as outlined in Exhibit A. The total amount to be paid by the COUNTY to the CONSULTANT for professional services, including any out of pocket expenses, shall not exceed Two-Hundred Eighty-One Thousand Four Hundred Fifty-One Dollars and Thirty-Seven Cents (\$281,451.37) for the services in Amendment No. 11 to the original Contract.
2. Except as specifically amended herein, all other terms and conditions of the Contract shall remain in full force and effect.

REMAINDER OF PAGE INTENTIONALLY LEFT BLANK

IN WITNESS WHEREOF, the parties have caused the Eleventh Amendment to the Contract to be signed by the Mayor of the Board of County Commissioners and the Seal of said Board to be fixed hereto and attested by the Clerk of said board, and the CONSULTANT, RS&H, Inc., has caused these presents to be signed in its corporate name by its duly authorized officer (Name) Andrew P. Wheeler, (Title) Executive Vice President, acting on behalf of said CONSULTANT, and the Seal of said CONSULTANT to be affixed hereto and attested by the Secretary of said CONSULTANT, the day and year first written above.

ATTEST:

PALM BEACH COUNTY, FLORIDA

**JOSEPH ABRUZZO
CLERK OF THE COUNTY COURT
AND COMPTROLLER**

BOARD OF COUNTY COMMISSIONERS

By: _____
Deputy Clerk

By: _____
Mayor

WITNESS:

CONSULTANT:

DocuSigned by:
Shelly McLane
E1F054881E0249C

SIGNATURE

RS&H, Inc.

COMPANY NAME

Shelly McLane

Name (type or print)

DocuSigned by:
ANDREW WHEELER
77B494D6815941B...

Signature

Andrew P. Wheeler

Name (type or print)

**APPROVED AS TO FORM
AND LEGAL SUFFICIENCY**

Executive Vice President


Title

BY: 

County Attorney

(Corporate Seal)

**APPROVED AS TO TERMS
AND CONDITIONS**

By: 

Department Director

AMENDMENT NO 11 INDEX

CERTIFICATE OF INSURANCE

EXHIBIT A: AMENDMENT NO. 11

EXHIBIT A-1 – Task I-24-PBI-R-038: Switchgear Phase 2 – Substation A Design

EXHIBIT A-2 – Task I-24-PBI-R-039: Concourse B Expansion – Ductbank Conflict

EXHIBIT A-3 – Task III Services

EXHIBIT B: DETAILED FEES, EXPENSES AND PAYMENTS

EXHIBIT B-I: Summary of Fees

EXHIBIT B-II: Schedule of Payments

EXHIBIT C – PROPOSED SCHEDULES

EXHIBIT D – DISADVANTAGED BUSINESS ENTERPRISE COMPLIANCE

CERTIFICATE OF INSURANCE



**Palm Beach County
Compliance Summary Report**

Vendor Number	Vendor Name	AM Best Rating	Insurance Carrier	Policy #	Eff. Date	Exp. Date	Coverage	Contract Number	Contract Name
DX00000525	RS&H, Inc.	Modified	Compliant					DOA 18-2A	Consulting/Professional Services
		A+g , XV	Zurich American Insurance Company	BAP146956401	6/28/2023	6/28/2024	Auto Liability		
		A+g , XV	American Guarantee and Liability Insurance Company	AUC146955801	6/28/2023	6/28/2024	Excess Liability		
		Ag , XV	The Continental Insurance Company	7039681430	6/28/2023	6/28/2024	Excess Liability		
		A++g , XV	Travelers Property Casualty Company of America	EX6T35064A23NF	6/28/2023	6/28/2024	Excess Liability		
		A+g , XV	Zurich American Insurance Company	GLO146640901	6/28/2023	6/28/2024	General Liability		
		A , XV	Lloyds Underwriters (Canada Branch)	B0146LDUSA2304894	6/28/2023	6/28/2024	Professional Liability		
		A+g , XV	American Guarantee and Liability Insurance Company	WC041147101	6/28/2023	6/28/2024	Workers Comp		

Risk Profile : Standard - Professional Services
Required Additional Insured : Palm Beach County Board of County Commissioners
Ownership Entity :

EXHIBIT A: AMENDMENT NO. 11

This Amendment No 11 is in accordance with the Contract for Consulting/Professional Services (Agreement R-2019-0612) between Palm Beach County (COUNTY) and RS&H, Inc. (CONSULTANT) dated May 7, 2019. The Airport has requested that RS&H (Consultant), under the Agreement, provide a scope and fee for additional services needed to continue performance of on-going services related to tasks authorized prior to expiration of contract.

CERTIFICATE OF INSURANCE

EXHIBIT A: AMENDMENT NO. 11

EXHIBIT A-1 – Task I-24-PBI-R-038: Switchgear Phase 2 – Substation A Design

EXHIBIT A-2 – Task I-24-PBI-R-039: Concourse B Expansion – Ductbank Conflict

EXHIBIT A-3 – Task III Services

EXHIBIT B: DETAILED FEES, EXPENSES AND PAYMENTS

EXHIBIT B-I: Summary of Fees

EXHIBIT B-II: Schedule of Payments

EXHIBIT C – PROPOSED SCHEDULES

EXHIBIT D – DISADVANTAGED BUSINESS ENTERPRISE COMPLIANCE

EXHIBIT A-1 – Task I-24-PBI-R-038: Switchgear Phase 2 – Substation A Design

***Switchgear Replacement -
Phase 2:
Substation A Design
Scope of Work***

Version 1.0

February 15, 2024

Palm Beach County (PBC) Department of Airports (DOA)
West Palm Beach, FL

Task Authorization No.: I-24-PBI-R-038

RS&H Project No.: 2006-3101-028

Prepared by RS&H, Inc. at the
direction of PBC DOA.

RS&H

I PROJECT DESCRIPTION

The Airport has requested that RS&H (Consultant) under the Agreement with RS&H for Airport Facilities and System Consulting Services for Palm Beach County Department of Airports Project No. DOA 18-2A provide a scope and fee for construction documents for new Substation A building next to Bldg 846 (new scope) as part of the replacement of primary electrical components that provide electrical service to the Terminal Complex at Palm Beach International Airport (PBI) (Project). Original scope located Substation A exterior and next to Concourse A.

The following professional disciplines/services/specialties are expected to play a significant role in the development of the Project:

- » Project Management
- » Civil Engineering
- » Landscape Architecture (New)
- » Architecture
- » Structural Engineering
- » Mechanical / Plumbing Engineering
 - HVAC
 - Storm Drainage
- » Electrical Engineering
- » Low Voltage Systems

The Consultant design team is made up of the following professionals:

<u>Consultant/Subconsultant</u>	<u>Involvement</u>
RS&H	Civil Engineering, Landscape Architecture, Architectural, Structural Engineering, Mechanical Engineering, Plumbing Engineering, Low Voltage Engineering
Quantum Electrical Engineering, Inc. (QEE)	Electrical Engineering

II PROFESSIONAL SERVICES FEE AND FEE TYPE

RS&H will provide the above referenced services for a Fixed Lump Sum Fee of \$42,528.48. See Attachment for a breakdown of costs.

Should scope items/activities/efforts/durations be modified at the request of PBC DOA or need to be adjusted based on design scheduling, the Consultant Team may need to modify the fee to accommodate the changes. Such changes will be compensated through an amendment (through Additional Services requested by the Consultant) to the Task Order or similar vehicle. Effort, fee, and schedule adjustments resulting from a change in scope will be assessed and approved by the Airport prior to the execution of the change.

PALM BEACH COUNTY DEPARTMENT OF AIRPORTS
Airport Facilities & Systems Planning, Design, Engineering and Construction Management Professional Services

RS&H, INC.
Switchgear Replacement - Phase 2: Substation A Design

<u>Task</u>	<u>Description</u>	<u>Hours</u>	<u>Fee</u>
	Sub A Design	331	\$40,266.96
		Subtotal RS&H Labor Hours	331
		Subtotal RS&H Labor Fee	\$40,266.96
<u>Subconsultants</u>			
	Quantum Electrical Engineering, Inc.	20	\$2,261.52
		Subtotal Subconsultant Fee	\$2,261.52
		Total Project Fee	\$42,528.48

Switchgear Replacement - Phase 2: Substation A Design

	HOURS																			HOURS	TOTAL COST (\$)																								
	Principal	Senior Project Manager	Senior Architect	Architect	Intern Architect	Senior Engineer	Intern Engineer	Senior Engineer	Engineer	Intern Engineer	Senior Engineer	Engineer	Intern Engineer	Senior Engineer	Engineer	Intern Engineer	Senior Engineer	Engineer	Intern Engineer			Senior Engineer	Administrative Assistant																						
	\$349.89	\$287.02	\$245.39	\$125.07	\$89.16	\$246.63	\$96.47	\$246.63	\$151.55	\$96.47	\$246.63	\$151.55	\$96.47	\$246.63	\$151.55	\$96.47	\$246.63	\$151.55	\$96.47	\$246.63	\$60.37																								
Sub A Design																																													
Design Document Preparation																																													
	2	4																			6	12	\$2,210.28																						
						4	16															20	\$2,530.04																						
						4	16															20	\$2,530.04																						
			6	21	39																	66	\$7,436.85																						
								5	19	40												64	\$7,971.40																						
										2	18	34										54	\$6,501.14																						
														1		1						2	\$343.10																						
																		24	60			84	\$9,425.40																						
						3	6															9	\$1,318.71																						
TOTAL FOR ALL TASKS (RS&H)																							2	4	6	21	39	11	38	5	19	40	2	18	34	1	-	1	-	24	60	-	6	331	\$40,266.96

QUANTUM

Electrical Engineering, Inc.

January 5, 2024

RS&H, Inc.
Mr. Aaron Jackson, PE, LEED AP
Aviation Structural Engineer
10748 Deerwood Park Blvd. South
Jacksonville, FL 32256

Subject: Additional Electrical Engineering Design Services Fee Proposal for the Palm Beach County Department of Airports (DOA) Palm Beach International Airport Switchgear Replacement Phase 2 – Substation A Building Design.

Dear Aaron:

Quantum Electrical Engineering, Inc. (Quantum) is pleased to provide RS&H an additional electrical design services fee proposal for the PBIA Switchgear Replacement Phase 2 – Substation A Building Design. The following Tasks are included in our scope:

- Design electrical distribution system for the new Substation A Building. Includes riser/one-line diagrams, calculations, plan layouts, panel schedules and electrical details.
- Design fire alarm system for new Substation A Building. Includes fire alarm riser diagrams, fire alarm calculations and plan layouts.
- Design interior and exterior lighting systems for new Substation A Building. Includes photometric calculations, luminaire selections, luminaire schedules and plan layouts.
- Includes a lightning protection system design via a performance based specification.
- Includes design meeting all County Standards / Codes and permit requirements.

Our proposed Total Lump-Sum fee for the Additional Services is: \$ 2,261.52
(See Attachment for Breakdown)

Sincerely,



Amy L. Champagne-Baker, PE
President

Palm Beach County
2755 Vista Parkway, Suite I-12
West Palm Beach, FL 33411
561.210.9224

www.QuantumElectricalEngineering.com

Broward County
5571 N. University Drive, Suite 101
Coral Springs, FL 33067
954.369.5810

PALM BEACH COUNTY DEPARTMENT OF AIRPORTS - PBIA SWITCHGEAR REPLACEMENT PHASE 2 SUBSTATION A BUILDING DESIGN										
QUANTUM ELECTRICAL ENGINEERING, INC.										
SCOPE FEE SUMMARY										
FEE PROPOSAL ELECTRICAL SERVICES TO RSH 01-05-24										
	Rate	\$161.54	\$144.23	\$138.46	\$69.23	\$132.69	\$46.15			
	Proj. Mgr.	Prof. Eng	Proj. Eng	CADD/Tech	Field Eng.	Clerical	Total			TOTAL
	Hours	Hours	Hours	Hours	Hours	Hours	Hours	Expenses	TASK COST	
PHASE OF WORK ADDITIONAL SERVICES										
Construction Documents										
Building Electrical, Lighting and Fire Alarm Design Development		8	4	8			20			\$2,261.52
Grand Total Hours	0	8	4	8	0	0	20			
Grand Total Labor Cost	\$0.00	\$1,153.84	\$553.84	\$553.84	\$0.00	\$0.00				\$2,261.52

EXHIBIT A-2 – Task I-24-PBI-R-039: Concourse B Expansion – Ductbank Conflict

Concourse B Expansion – Duct Bank Conflict Scope of Work

Version 1.0

February 21, 2024

Palm Beach County (PBC) Department of Airports (DOA)

West Palm Beach, FL

Task Authorization No. I-24-PBI-R-039

RS&H Project No.: 2006-3101-031

Prepared by RS&H, Inc. at the
direction of PBC DOA

RS&H

I PROJECT DESCRIPTION

The Airport has requested that RS&H (Consultant) under the Agreement with RS&H for Airport Facilities and System Consulting Services for Palm Beach County Department of Airports Project No. DOA 18-2A provide a scope and fee for the following additional services needed to continue performance of on-going services related to Task authorized prior to expiration of contract:

- Design Services for sanitary storm design modifications due to unforeseen condition of conflict between unknown communication ductbank and sanitary line under Concourse B breezeway.

This effort will impact the following professional disciplines:

<u>Consultant/Subconsultant</u>	<u>Involvement</u>
RS&H, Inc.	Project Management
Keith and Associates	Lift Station Design

II PROFESSIONAL SERVICES FEE AND FEE TYPE

RS&H will provide the above referenced services for a Fixed Lump Sum Fee of \$38,922.89. See Attachment for a breakdown of costs.

Should scope items/activities/efforts/durations be modified at the request of PBC DOA or need to be adjusted based on design scheduling, the Consultant Team may need to modify the fee to accommodate the changes. Such changes will be compensated through an amendment (through Additional Services requested by the Consultant) to the Task Order or similar vehicle. Effort, fee, and schedule adjustments resulting from a change in scope will be assessed and approved by the Airport prior to the execution of the change.

PALM BEACH COUNTY DEPARTMENT OF AIRPORTS
Airport Facilities & Systems Planning, Design, Engineering and Construction Management Professional Services

RS&H, INC.
Concourse B Expansion – Duct Bank Conflict

<u>Task</u>	<u>Description</u>	<u>Hours</u>	<u>Fee</u>
	Duct Bank Conflict	7	\$1,618.81
		Subtotal RS&H Labor Hours	7
		Subtotal RS&H Labor Fee	\$1,618.81
<u>Subconsultants</u>			
	Keith and Associates		\$37,304.08
		Subtotal Subconsultant Fee	\$37,304.08
		Total Project Fee	\$38,922.89

Concourse B Expansion – Duct Bank Conflict

		HOURS					HOURS	TOTAL COST (\$)
		Principal \$349.99	Sr. Project Manager \$287.02	Architect \$125.87	Intern Architect \$85.16	Administrative Assistant \$60.37		
Burdened hourly rates								
1	Project Management	1	4			2	\$1,618.81	
	Task Total	1	4	-	-	2	\$1,618.81	
TOTAL FOR ALL TASKS (RS&H)		1	4	-	-	2	\$1,618.81	

Concourse B Expansion – Duct Bank Conflict

Sub Consultant Effort by Major Task Item				Total
Keith and Associates		\$ 37,304.08		\$37,304.08
TOTAL SUBCONSULTANTS				\$37,304.08



AGREEMENT FOR PROFESSIONAL SERVICES

February 1, 2024

Aaron R Jackson, P.E.
RS&H, Inc.
3125 W. Commercial Blvd. Suite 130
Fort Lauderdale, FL 33309
Phone: (954) 236 - 7364
E-mail: Aaron.Jackson@rsandh.com

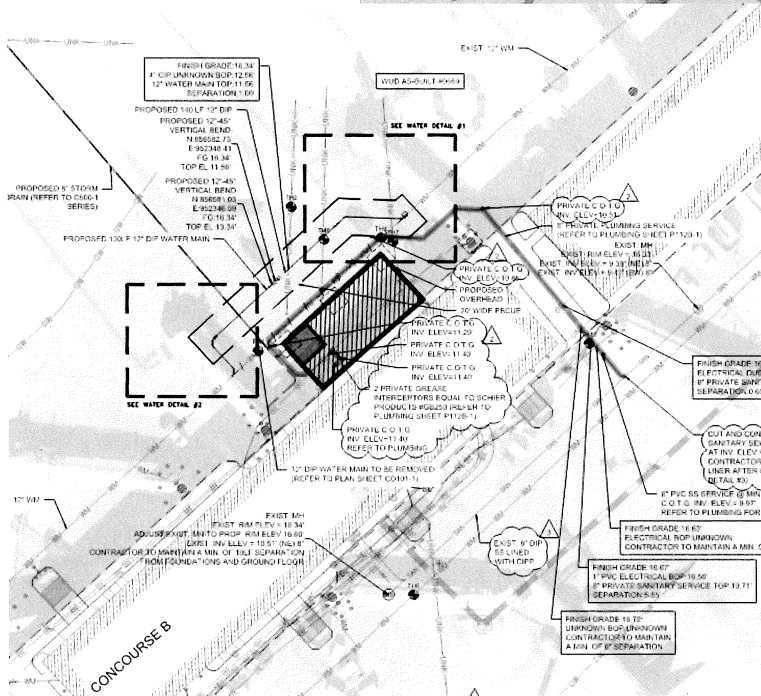
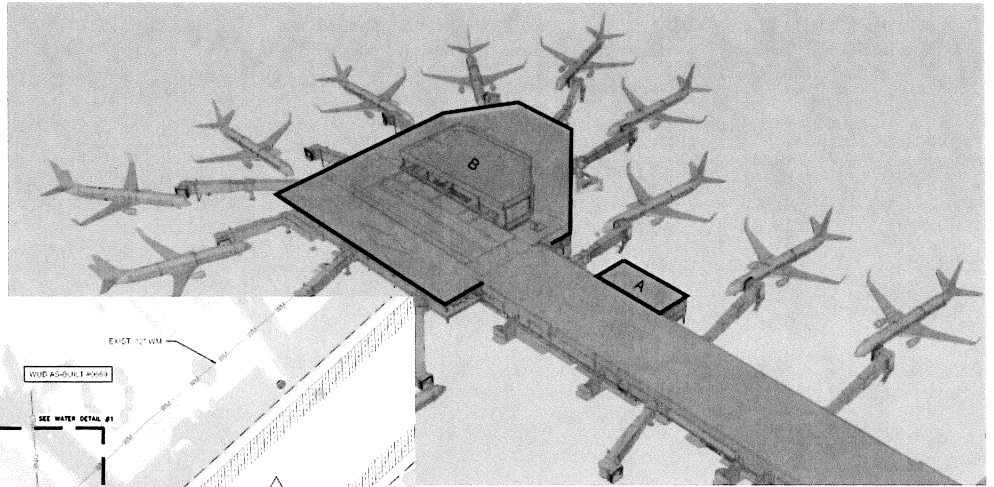
Project Name: PBI Concourse B Expansion
KEITH Project Number: 10216.17

Dear Mr. Jackson:

PROJECT UNDERSTANDING

The CLIENT has requested that KEITH provide Civil (Sewer) services to develop 100% Construction Documents for a lift station and process permitting approvals. KEITH will alter the current 100% design in order to allow for the wastewater connections to be made considering there was an unforeseen condition, where a duct bank was in direct conflict with the designed sanitary sewer lateral.

Project Areas – Site Map



www.KEITHteam.com

February 1, 2024 / Page 2 of 4
10216.17 PBI Concourse B Expansion Lift Station
RS&H

PROJECT SCOPE

KEITH services included for this project:

Survey

- ALTA/NSPS
- Topography
- Boundary
- Tree
- Sketch and Description
- Construction Layout
- Construction As-Built
- Other _____

SUE

- Horizontal Designation
- Location Services
- Utility Mapping
- Records Research
- Other _____

Planning Services

- Due Diligence
- Platting
- Rezoning
- Conditional Use Permit
- Right of Way Vacation
- Site Plan Processing and Coordination
- Other _____

Civil Engineering Services

- Paving, Grading and Drainage
- Water Distribution and Sanitary Sewer
- Erosion Control Plan
- Civil Permitting

Transportation Engineering Services

- Major Roadway
- Minor Roadway
- Drainage
- Maintenance of Traffic Plans
- Quality Control
- Other _____

Traffic Engineering Services

- Traffic Impact Study
- Traffic Impact Statement
- Parking Study
- Pavement Marking and Signage
- Signalization
- Roadway Lighting
- Other _____

Landscape Architecture Services

- Hardscape and Paving
- Fine Grading
- Landscape
- Irrigation
- Site Lighting
- Pools or Water Features
- Specialty Features
- Other _____

Construction/Program Management Services

- Permitting
- Bidding Assistance
- Construction Observation
- Construction Certification
- Other _____



DESCRIPTION OF SERVICES AND DELIVERABLES

Task 1 CIVIL ENGINEERING SERVICES

Task 1.1 Lift Station Construction Documents

KEITH will perform lift station calculations to determine the size and capacity requirements of the proposed lift station. These calculations will be summarized in a report and meet regulatory agency permitting requirements. KEITH will prepare Construction Documents as required by CLIENT and regulatory agency requirements. These engineering services do not include the extension/replacement and/or upsizing of any water and/or sanitary sewer mains surrounding the site.

KEITH will prepare 90% and 100% Site Civil Construction Documents for lift station and force main design within the project limits shown on the attached **Exhibit A**, and to a level of completeness required for contractor bidding and to address permitting agency review comments

KEITH will prepare the final engineering plans, supporting documents and calculations for site civil and utility infrastructure improvements including lift station design and force main design.

The Construction Documents will include:

- Cover Sheet
- Legend and Abbreviations
- General Notes and Specifications
- Lift Station Plan and Elevations
- Lift Station Details
- Utility Plan
- Utility Profiles and Details

This task will include the additional shop drawing reviews needed for the pumps and materials, but does not include geotechnical or electrical engineering services.

Task 1.2 Engineering Permitting

KEITH will attend required meetings with agencies having jurisdiction over the facilities designed by KEITH, and prepare and submit the permit applications for the construction of the following improvements and process them through the following regulatory agencies:

Sewer System (Lift Station and Force main):

- Palm Beach County Water Utilities Department (PCWUD) – Wastewater Approval
- Palm Beach County Health Department (PBCHD) – Wastewater Permit (DEP Form)

Permitting fees are not included in this scope of services and shall be provided by CLIENT as necessary.

If additional permits are required, KEITH will process them and the fees for these additional services will be submitted to CLIENT as additional services under a contract addendum if required. Permitting fees will be provided by CLIENT



February 1, 2024 / Page 4 of 4
10216.17 PBI Concourse B Expansion Lift Station
RS&H

SCHEDULE

ENGINEERING SERVICES

Task 1.1 Lift Station Construction Documents
Task 1.2 Engineering Permitting

3 weeks from NTP
2 months (As Needed for Permits)

COMPENSATION

ENGINEERING SERVICES

Task 1.1 Lift Station Construction Documents
Task 1.2 Engineering Permitting
Total Fee

\$24,928.40 (Lump Sum)
\$12,375.68 (Lump Sum)
\$37,304.08

The CLIENT is required to execute this Addendum and return it to the CONSULTANT prior to commencement of the additional services described herein. All items, terms, and conditions of the original Agreement (as amended to include the scope defined herein) remain unchanged and in full force and effect.

IN WITNESS WHEREOF, CONSULTANT and CLIENT have executed this agreement the day and year indicated below.

As to CONSULTANT
KEITH

As to CLIENT
RS&H, Inc.

Signature: _____

Alex Lazowick
President

Print Name: _____

Title: _____

DATED: _____

DATED: _____



Engineering Inspired Design.



Palm Beach County Airport General Services

PBI Concourse B Expansion Lift Station

Labor Rate Schedule: 2019 Rates

Subconsultant Name: RS&H

Rate Proposal Date: 02/01/2024

KEITH ENGINEERING SERVICES				
Employee Title		Total Hourly Rate \$/Hour	HOURS	TOTALS
Task 1.1 Lift Station Construction Documents				
Project Manager III		220.99	40	\$8,839.60
Engineer III		132.6	100	\$13,260.00
Technician II		88.4	32	\$2,828.80
Lump Sum Fee				\$24,928.40
Task 1.2 Engineering Permitting				
Project Manager III		220.99	32	\$7,071.68
Engineer III		132.6	40	\$5,304.00
Technician II		88.4	0	\$0.00
Lump Sum Fee				\$12,375.68
Total Lump Sum Fee				\$37,304.08

EXHIBIT A-3 – Task III Services

TASK III SERVICES

Level 3 Tasks – Miscellaneous Planning and Engineering Services: Work to be completed under Level 3 Tasks will be issued per the level of authority contained in PPW CW-F-050, by way of a separate proposal or task authorization, as described in the original Consulting Agreement (R-2019-0612).

TASK LEVEL / NO.	DESCRIPTION	BUDGET
Task III-19-DOA-R-001	Misc. AEP and Construction Consulting Services Amendment #11	\$ 200,000.00
Sub-total (Level 3)		\$ 200,000.00

EXHIBIT B: DETAILED FEES, EXPENSES AND PAYMENTS

EXHIBIT B-I: Summary of Fees

This Amendment #11, as described herein, consists of multiple tasks. As summarized below, these initial efforts have an overall budget of: \$281,451.37

LEVEL 1 TASKS:

TASK Level / No.	DESCRIPTION	LUMP SUM	NOT-TO-EXCEED	REIMBURSABLE EXPENSES	TOTAL
I-24-PBI-R-038:	Switchgear Phase 2 – Substation A	\$ 42,528.48	\$ -	\$ -	\$ 42,528.48
I-24-PBI-R-039:	Concourse B Expansion – Ductbank Conflict	\$ 38,922.89	\$ -	\$ -	\$ 38,922.89

LEVEL 3 TASKS:

TASK LEVEL / NO.	DESCRIPTION	TOTAL
Task III-19-DOA-R-001	Misc. AEP and Construction Consulting Services Amendment #11	\$200,000.00
Grand Total (Amendment #11)		\$281,451.37

EXHIBIT B-II: Schedule of Payments

The Scope of Work to be completed by CONSULTANT as defined in Exhibit “A” consist of specific completion phases which shall be clearly identified on phase-by-phase basis upon submission to the COUNTY of certain “deliverables”¹ as expressly indicated below. Compensation for the work tasks stated herein shall be in accordance with the following schedule of payment.

The following is a list of projects in the Work Program #2; Amendment #11:

LEVEL 1 TASKS:

Task I-24-PBI-R-038 **Switchgear Phase 2 – Substation A**
Compensation: \$ 42,528.48

Task I-24-PBI-R-039 **Concourse B Expansion – Ductbank Conflict**
Compensation: \$ 38,922.89

LEVEL 3 TASKS:

Task III-19-DOA-R-001

Misc. AEP and Construction Consulting Services Amendment #11

Duration: As required in accordance with specific Task Authorizations

Compensation: \$200,000.00

TOTAL = \$281,451.37

1. "Deliverables" shall be defined as progress reports, prepared maps, bid documents, completed drawings, specific reports, work plans, documentation of meetings attended, assessment study reports, analysis reports, summary reports, recommendation reports and related draft reports and verifiable deliverables.

EXHIBIT D – DISADVANTAGED BUSINESS ENTERPRISE COMPLIANCE

Table D-1 summarizes the estimated fee for each of our team members that are certified DBE firms for Amendment 11.

Table D-1: DBE Firms, Scheduled Payment, Scheduled % of Fee

Firm	Amendment 11 Totals	% of Amendment 11
Quantum Electrical Engineering, Inc	\$ 2,261.62	0.80%
TOTALS	\$ 2,261.62	0.80%

THE REST OF THIS PAGE IS INTENTIONALLY LEFT BLANK.

ATTACHMENT 2: DBE GOAL INFORMATION

Table D-2 summarizes the estimated fee for each of our team members that are certified DBE firms for the Total Contract.

Table 2: DBE Firms Scheduled Payment, Scheduled % of Total Fee

Firm	Base (R2019-0612) Totals	Amend #1 (R2020-0414) Totals	Amend #2 (R2020-1607) Totals	Amend #4 (R2021-0844) Totals	Amend #5 (R2022-0263) Totals	Amend #6 (R2023-0103) Totals	Amend #7 (R2023-0447) Totals	Amend #8 (R2023-0532) Totals	Amend #9 (R2023-1540) Total	Amend #10 (R2023-1595) Total	Amend #11 (R2023-) Total	Total Fees	% of Total Contract
Colome'	\$ 73,966.80	\$ 164,286.41	\$ -	\$ -	\$ -	\$ -	\$ -	\$ -	\$ -	\$ -	\$ -	\$ 238,253.21	1.52%
Tierra South Florida	\$ 28,715.00	\$ 26,985.00	\$ 29,240.00	\$ -	\$ 3,165.00	\$ -	\$ 17,175.00	\$ 1,750.00	\$ -	\$ -	\$ -	\$ 107,030.00	0.68%
Brown & Phillips	\$ 20,021.45	\$ 18,202.62	\$ 18,979.53	\$ -	\$ -	\$ -	\$ -	\$ -	\$ -	\$ -	\$ -	\$ 57,203.60	0.37%
CECOS	\$ -	\$ 5,403.70	\$ -	\$ -	\$ -	\$ -	\$ -	\$ -	\$ -	\$ -	\$ -	\$ 5,403.70	0.03%
Mobio	\$ 161,533.98	\$ -	\$ 176,600.00	\$ 323,400.00	\$ -	\$ -	\$ -	\$ -	\$ -	\$ -	\$ -	\$ 661,533.98	4.23%
Lakdas-Yohalem	\$ -	\$ -	\$ -	\$ -	\$ -	\$ -	\$ -	\$ -	\$ -	\$ -	\$ -	\$ -	0.00%
Connico	\$ 90,000.00	\$ 9,300.00	\$ 69,000.00	\$ -	\$ 8,926.00	\$ 70,200.00	\$ -	\$ 64,200.00	\$ -	\$ -	\$ -	\$ 311,626.00	1.99%
Digital Building Services	\$ -	\$ -	\$ 183,689.00	\$ -	\$ -	\$ -	\$ -	\$ -	\$ -	\$ -	\$ -	\$ 183,689.00	1.18%
Master Consulting Engineers	\$ -	\$ 83,865.96	\$ 4,960.00	\$ 32,078.44	\$ -	\$ -	\$ -	\$ -	\$ -	\$ 55,950.30	\$ -	\$ 176,854.70	1.13%
Quantum	\$ -	\$ 181,491.77	\$1,232,044.70	149,029.00	\$ 542,155.33	\$ 554,206.67	96,356.58	\$ 177,962.21	\$ 23,726.37	\$ 160,366.46	\$ 2,261.52	\$ 3,119,600.61	19.96%
Air Projects	\$ -	\$ -	\$ 3,412.31	\$ -	\$ 11,207.68	\$ 17,735.01	\$ -	\$ -	\$ -	\$ -	\$ -	\$ 32,355.00	0.21%
CRJ	\$ -	\$ 117,500.00	\$ -	\$ -	\$ -	\$ -	\$ -	\$ -	\$ -	\$ 10,087.04	\$ -	\$ 127,587.04	0.82%
TOTALS	\$ 374,237.23	\$ 607,035.46	\$1,717,925.54	\$ 504,507.44	\$ 565,454.01	\$ 642,141.68	\$ 113,531.58	\$ 243,912.21	\$ 23,726.37	\$ 226,403.80	\$ 2,261.52	\$ 5,021,136.84	32.13%

Notes:

1. Values in red differ from Amendment 10 Table D-2
2. Amendment 2 Revisions
Quantum incorrect in Amendment 10 Tabel D-2
Total value varies as values creating the summation changed.
4. "Total Fees" revisions
Total value varies as values creating the summation changed.
6. "% of Total Contract" revisions
Total value varies as values creating the %'s changed.

**SCHEDULE 1(A)
LIST OF PROPOSED DBE FIRMS
(Professional Services)**

Airport Facilities & Systems Planning, Design, Engineering and Construction Management Professional Services for
LOI/SOQ Project Description: Palm Beach County Department of Airports

Name of Respondent: RS&H, Inc.

Change Order/Task/Amendment No. (if applicable): Amendment No 11

Contact Person: Pat Hargrove

E-mail Address: pat.hargrove@rsandh.com

Address: 10748 Deerwood Park Blvd S, Jacksonville FL 32256

Phone No.: 904-256-2437 Fax No: 800-464-4358

Name, Address & Phone No. of DBE Firm	Description of Type of Work	Classification (Check applicable box)	Percentage of DBE Participation			
			Black	Hispanic	Women	Other (Please Specify)
Quantum Electrical Engineering, Inc.	Electrical Engineering Design Services	<input type="checkbox"/> Prime Consultant <input checked="" type="checkbox"/> Subcontractor <input type="checkbox"/> Supplier <input type="checkbox"/> Manufacturer	_____ %	_____ %	<u>.80</u> %	_____ %
		<input type="checkbox"/> Prime Consultant <input type="checkbox"/> Subcontractor <input type="checkbox"/> Supplier <input type="checkbox"/> Manufacturer	_____ %	_____ %	_____ %	_____ %
		<input type="checkbox"/> Prime Consultant <input type="checkbox"/> Subcontractor <input type="checkbox"/> Supplier <input type="checkbox"/> Manufacturer	_____ %	_____ %	_____ %	_____ %
		<input type="checkbox"/> Prime Consultant <input type="checkbox"/> Subcontractor <input type="checkbox"/> Supplier <input type="checkbox"/> Manufacturer	_____ %	_____ %	_____ %	_____ %

Total Percentage of DBE Participation: .80 %

Notes:

- The percentages listed on this form for each DBE Firm must be supported by the percentages included on Schedule 2(A), "Letter of Intent to Perform as a Disadvantaged Business Enterprise", in order to be counted toward attainment of the DBE goal.
- Firms identified on this form must be certified as a DBE by the State of Florida's Unified Certification Program. Certification status can be verified on the Florida Department of Transportation's Biznet website at <https://www3.dot.state.fl.us/EqualOpportunityOffice/biznet/mainmenu.asp>.
- If materials or supplies are proposed to be purchased from a DBE regular dealer, the undersigned acknowledges that only sixty percent (60%) of the proposed expenditure will be counted toward attainment of the DBE goal.

By signing this form the undersigned Respondent is committing to utilize the above referenced DBE Firms on the Project and that the Respondent will monitor the DBE Firms to ensure that the work is actually performed by the the DBE Firms.

By: Pat Hargrove
Signature

Date: 2/23/2024

Pat Hargrove, AIA NCARB, Vice President, Aviation
Print Name/Title of Person Executing on Behalf of the Respondent

SCHEDULE 2(A)
LETTER OF INTENT TO PERFORM AS A DISADVANTAGED BUSINESS ENTERPRISE
(Professional Services)

LOI/SOQ Project Description: Airport Facilities & Systems Planning, Design, Engineering and Construction Management Professional Services for Palm Beach County Department of Airports

Change Order/Task /Amendment No. (if applicable): _____

Name of Prime Respondent: RS&H, Inc.

Name of DBE Firm: Quantum Electrical Engineering, Inc.

The undersigned is certified as a Disadvantaged Business Enterprise by the State of Florida's Unified Certification Program. Check one or more classifications as applicable:

- Black Hispanic Women Other (Please Specify) _____
- Prime Consultant Subcontractor Manufacturer Supplier

The undersigned is prepared to perform the following described work in connection with the above-referenced project (specify in detail the particular work and/or parts thereof to be performed):

Electrical Engineering Design Services

(Additional Sheets may be used as necessary.)

Total Percentage of Participation by DBE Firm for this Project: 0.80 %

and will enter into a formal agreement for work with you conditioned upon your execution of a contract with Palm Beach County.

If the undersigned intends to subcontract any portion of the work described above to another subcontractor, please complete the following:

	%	<input type="checkbox"/> DBE Certified
(Name of Subcontractor)	(Percentage of work to be subcontracted)	<input type="checkbox"/> Non-DBE

The undersigned affirms that it has the resources necessary to perform the work described above without subcontracting the work to another subcontractor, except as noted above.

Quantum Electrical Engineering, Inc.

Printed Name of DBE Subcontractor _____

By: 
Signature

Date: 2/7/2024

ATTACHMENT 3: BUDGET TRANSFER

24-0591

BOARD OF COUNTY COMMISSIONERS
 PALM BEACH COUNTY, FLORIDA
 BUDGET TRANSFER

Advantage Document Numbers
 BGRV:
 BGEX: 121-022824*1059

FUND 4111 Airport Improvement & Development Fund

ACCT.NUMBER	ACCOUNT NAME	ORIGINAL BUDGET	CURRENT BUDGET	INCREASE	DECREASE	ADJUSTED BUDGET	EXPENDED/ ENCUMBERED As of 2/27/24	REMAINING BALANCE
<u>REVENUES/EXPENDITURES</u>								
121-A342-6504	Iotb Non Infrastructure	5,461,422	4,189,740	42,529	0	4,232,269	3,648,352	583,917
121-A394-6505	Design/Eng/Mgmt - CIP Adm	2,851,770	2,851,770	38,923	0	2,890,693	11,679	2,879,014
121-A107-6505	Design/Eng/Mgmt - CIP Adm	8,808,773	9,362,956	200,000	0	9,562,956	4,998,156	4,564,800
121-A900-9909	Reserves Improvement Program	17,216,760	4,414,048	0	281,452	4,132,596	0	4,132,596
Total Receipts and Balances		217,226,377	214,803,233	281,452	281,452	214,803,233		

Signatures & Dates

By Board of County Commissioners

Office of Financial Management & Budget

At Meeting of

INITIATING DEPARTMENT/DIVISION

Tuesday, April 2, 2024

Administration/Budget Department Approval

Deputy Clerk to the

OFMB Department - Posted

Board of County Commissioners

Kenneth Nash 2/27/24
Lisa M... 3/10/2024