

**PALM BEACH COUNTY
BOARD OF COUNTY COMMISSIONERS
AGENDA ITEM SUMMARY**

Meeting Date:	September 9, 2025	[X] Consent	[] Regular
		[] Workshop	[] Public Hearing

Department:	Engineering and Public Works Department
Submitted By:	Engineering and Public Works Department
Submitted For:	Roadway Production Division

I. EXECUTIVE BRIEF

Motion and Title: Staff recommends motion to approve: Supplement No.1 (Supplement) in the amount of \$206,504.15 to the contract (R2020-0993) dated August 25, 2020 (Contract) with EAC Consulting, Inc. (EAC) for Kirk Road, Lake Worth Drainage District (LWDD) L-7 Canal to Summit Boulevard (Project).

SUMMARY: Approval of this Supplement will provide the professional services necessary to modify design plans and construction bid documents, and to provide additional drainage pond siting analysis for the Project. The Project necessitated multiple resubmittals and reviews to minimize impacts to adjacent properties, and to meet drainage design and permitting requirements. The solicitation for design professionals was advertised on March 18, 2018 and March 25, 2018, prior to the effective date of the Equal Business Opportunity Ordinance and pursuant to the Small Business Enterprise (SBE) Ordinance at the time, with final selection taking place on June 12, 2018. The SBE goal for all contracts was 15%. EAC committed to 17% SBE participation. The proposed SBE participation for this Supplement is 7.91%. To date, the overall SBE participation achieved on this Contract is 20.34%. **This Project is included in the Five-Year Road Program. District 3 (YBH)**

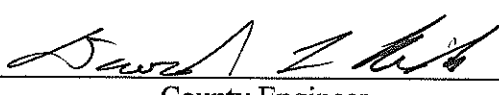

Background and Justification: On August 25, 2020, the Board of County Commissioners (BCC) approved the Contract with EAC to provide the professional services required for the Project. The fee, as detailed in Exhibit B of the attached Supplement, has been negotiated as just and reasonable compensation as follows:

Basic Services (Lump Sum)	\$191,476.42	(Roadway Analysis, Drainage Analysis, Geotechnical and Permitting).
Optional Services (Not to Exceed)	<u>\$ 15,027.73</u>	(Post Design and Environmental Services).
Total:	\$206,504.15	

After reviewing the attached Supplement and finding it in proper order, the Engineering and Public Works Department recommends BCC approval.

Attachments:

1. Location Map
2. Supplement No. 1 with Exhibits A, B, C, D and Ebix Insurance Compliance (2)

Recommended by:	 County Engineer	8/17/2025 Date
Approved By:	 Deputy County Administrator	8/20/25 Date

II. FISCAL IMPACT ANALYSIS

A. Five Year Summary of Fiscal Impact:

Fiscal Years	2025	2026	2027	2028	2029
Capital Expenditures	\$ 289,505	-0-	-0-	-0-	-0-
Operating Costs	-0-	-0-	-0-	-0-	-0-
External Revenues	-0-	-0-	-0-	-0-	-0-
Program Income (County)	-0-	-0-	-0-	-0-	-0-
In-Kind Match (County)	-0-	-0-	-0-	-0-	-0-
NET FISCAL IMPACT	\$ 289,505	-0-	-0-	-0-	-0-
# ADDITIONAL FTE					
POSITIONS (Cumulative)	-0-	-0-	-0-	-0-	-0-

Is Item Included in Current Budget?

Yes ☒ No ☐

Is this item using Federal Funds?

Yes ☐ No ☒

Is this item using State Funds?

Yes ☐ No ☒

Budget Account No:

Fund	Dept	Unit	Object
3502	361	1879	6505

Recommended Sources of Funds/Summary of Fiscal

Road Impact Fee Zone 2/Kirk Rd, LWDD L-7 to Summit Blvd

Brief Description: Supplement No. 1 to a project contract

Supplement No. 1

• Basic Services	\$191,476.42
• Optional Services	\$ 15,027.73
Total Supplement No. 1	\$206,504.15

Estimated Staff Costs

• Roadway Production	\$ 42,000.00
• Roadway Production: Right-of-Way	\$ 10,000.00
• Survey	\$ 10,000.00
• Traffic	\$ 21,000.00
Total Staff Costs	\$ 83,000.00

Fiscal Impact \$289,504.15

Impact Fee Description: This project includes widening Kirk Road from LWDD L-7 Canal to Summit Boulevard from a two-lane road to a three-lane road with a new central or two way left turn lane. This will provide additional roadway capacity needed to serve a new development within the impact Fee Zone 2. The use of Impact Fees is in Accordance with Article 13, Chapter A, Section 9 and Chapter H, Section 4 of the ULDC.

C. Departmental Fiscal Review:

III. REVIEW COMMENTS

A. OFMB Fiscal and/or Contract Dev. and Control Comments:

Lisa Mante 8/11/2025
08/11/25 OFMB 8/11/25 MO 8/11/25

Brandy Mante 8/13/25
Contract Dev. and Control 26,845.25

B. Approved as to Form
and Legal Sufficiency:

[Signature] 8/18/25
Assistant County Attorney

C. Other Department Review:

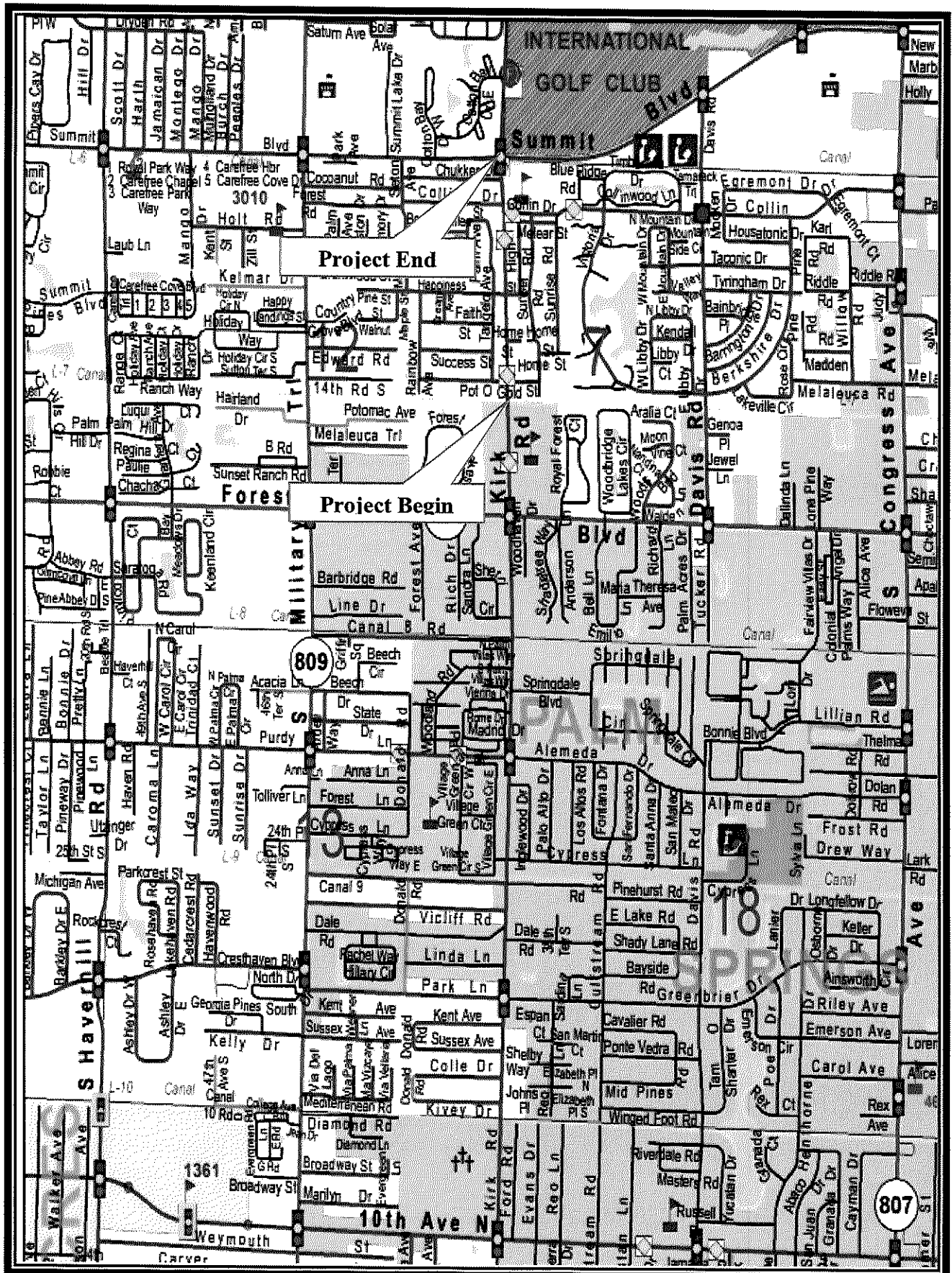
Department Director

This summary is not to be used as a basis for payment.

KIRK ROAD, LAKE WORTH DRAINAGE DISTRICT (LWDD)

L-7 CANAL TO SUMMIT BOULEVARD

Palm Beach County Project #2018505



LOCATION MAP

ATTACHMENT 1

SUPPLEMENT NO. 1
TO THE PROJECT CONTRACT

Project Name: **Kirk Road, Lake Worth Drainage District (LWDD) L-7 Canal to Summit Boulevard**

Project No: **2018505**

Commission District No.: **3**

	SBE
Participation for this authorization	7.91%
Participation to date for this Contract	20.34%
Contract Commitment	17%
This authorization is under the SBE Ordinance.	

PALM BEACH COUNTY

BOARD OF COUNTY COMMISSIONERS

Account No.: 3502-361-1879-6505

Supplement No. 1 to the Project Contract dated August 25, 2020 (R2020-0993) (CONTRACT), between the COUNTY and the CONSULTANT identified herein is for the Additional Services described in **EXHIBIT A** and **EXHIBIT B** for this Supplement.

1. CONSULTANT: EAC Consulting, Inc.
2. Address: 5959 Waterford District Drive, Suite 410 Miami, Florida 33126
3. CONSULTANT shall begin work promptly on the requested Additional Services, per the schedule attached as part of **EXHIBIT A**.
4. Scope of Services to be provided by CONSULTANT: Provide professional engineering services to Palm Beach County for the Kirk Road, Lake Worth Drainage District (LWDD) L-7 Canal to Summit Boulevard project. Design modification for roadway, additional drainage and design of two drainage ponds in accordance with the attached **EXHIBIT A** dated May 9, 2025.
5. The compensation to be paid CONSULTANT for providing the requested services as detailed in **EXHIBIT B** shall be:

<input checked="" type="checkbox"/> Basic Services in a lump sum fee of	\$191,476.42
<input checked="" type="checkbox"/> Optional Services capped at	<u>\$ 15,027.73</u>
Totaling	<u>\$206,504.15</u>

☒ OEBO Schedules 1 & 2 **EXHIBIT C**

☒ Project History **EXHIBIT D**


6. All terms of the CONTRACT, shall apply to this Supplement.

ATTACHMENT 1


SUPPLEMENT NO. 1
TO THE PROJECT CONTRACT

IN WITNESS WHEREOF, this Supplement is accepted as of the date signed by the COUNTY below, subject to the terms and conditions of the aforementioned CONTRACT, as amended.

CONSULTANT: **EAC Consulting, Inc.**
Federal ID: **65-0519739**

Signed: 
Typed Name: Harold Desdune, P.E.
Title: Senior Vice President
Date: 7/7/2025

COUNTY:
Approved as to Terms and Conditions

By: 
Typed Name: Morton L. Rose, P.E.
Title: Division Director

SUPPLEMENT NO. 1
TO THE PROJECT CONTRACT

{SIGNATURE PAGES CONTINUED}

COUNTY: Palm Beach County, a Political
Subdivision of the State of Florida, by and
through its Board of County Commissioners

Signed: _____
Typed Name: Maria G. Marino
Title: Mayor
Date: _____

ATTEST: _____
MICHAEL A. CARUSO
Clerk of the Circuit Court & Comptroller

By: _____

Deputy Clerk

Approved as to Form and Legal Sufficiency

By:  _____
Typed Name: Yelizaveta B. Herman
Title: Assistant County Attorney

*f:\roadway\ccn\2018\2018505 - kirk rd - lwdd l-7
canal to summit blvd\project\supplement 1\csa and
supplement template.docx*

803 5/12/25

HK 5/21/25
OK.

SCOPE OF SERVICES – Supplemental No. 1
Design Geometry Modifications and Pond Designs
Revised 5/9/2025

Kirk Rd. from LWDD L-7 Canal to Summit Blvd.

Palm Beach County

Roadway Production Division

Contract No. C9620

Palm Beach County Project No. 2018505

EAC Project No. 18038.HW03

PURPOSE

Additional services are required to address the changes to the project scope associated with:

1. Modifying roadway profile and cross slope elements
2. Additional drainage that was required, but was not anticipated to be needed in the original scope.
3. Designing two drainage ponds adjacent to the roadway, in lieu of french drain, to serve the proposed corridor.

ROADWAY ANALYSIS & DESIGN

1. Raise vertical alignment to avoid impacts to the existing roadway base material.
2. Adjust travel lane and shoulder cross slopes to minimize R/W impacts.
3. Update roadway plans to include revisions needed to incorporate the drainage ponds.

DRAINAGE ANALYSIS, DESIGN & PERMITTING

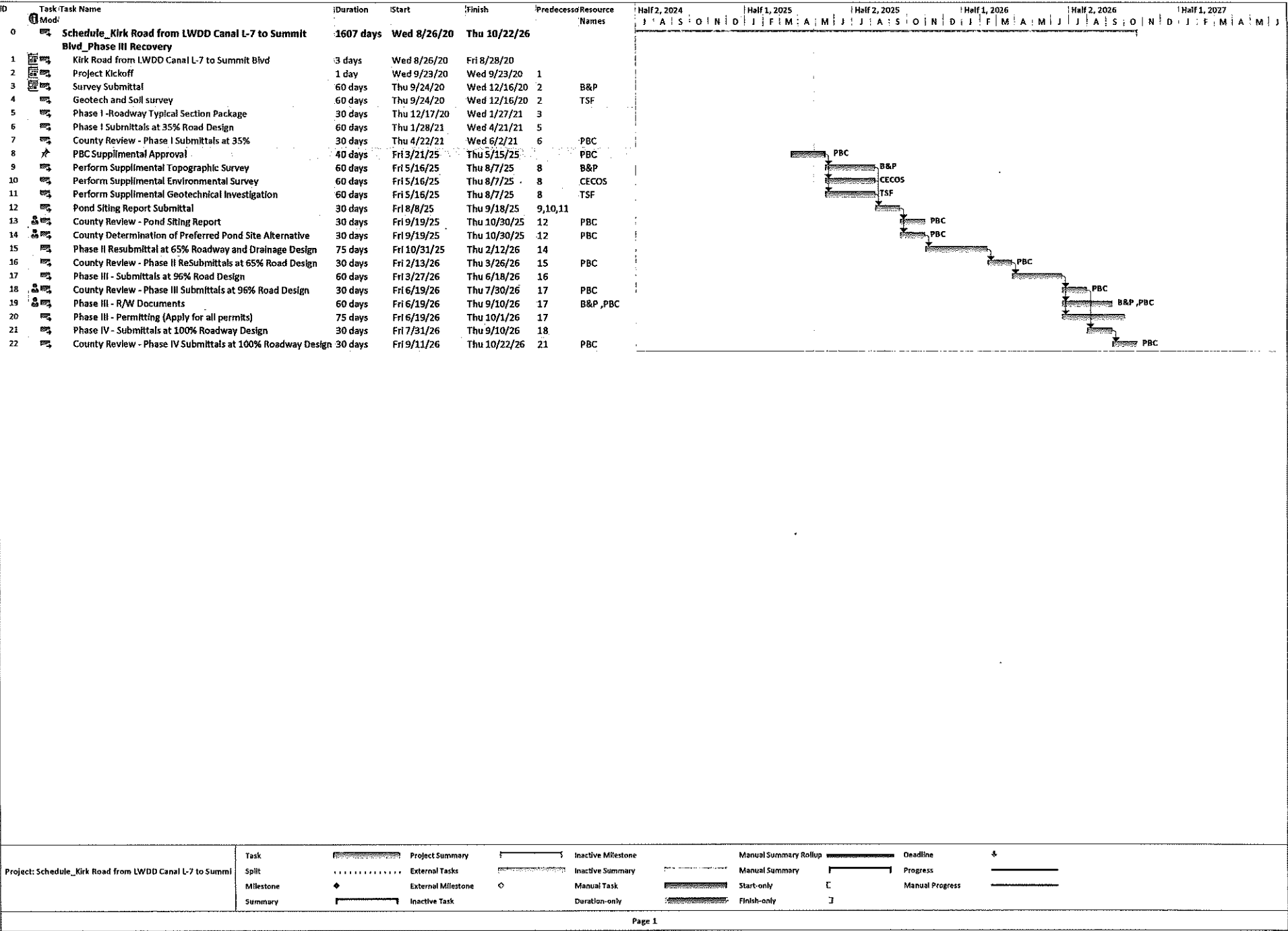
1. Analyze replacement of currently proposed French drain systems with drainage ponds
2. Perform pond siting analysis and produce pond siting report to determine pond locations and preliminary pond design.
3. Two pond options will be analyzed in the pond siting report. Pond Option 1 is for Pond Site 1 to be used by entire corridor. Pond Option 2 is for Pond Site 1 to be used by half the corridor and Pond Site 2 to be by the other half of the corridor.
4. Perform boundary and topographic survey of proposed pond locations
5. Perform geotechnical testing at proposed pond locations
6. Perform survey of environmental resources at proposed pond locations
7. Final design and plans production of one pond to treat entire corridor. Final design of more than one pond is not included in this scope.
8. Perform the required permitting with LWDD and SFWMD.

OPTIONAL SERVICES

- 1. Brown & Phillips - Perform utility test holes, as needed, at proposed pond locations.
- 2. Cyriacks – Assist Design Engineer with preparation of SFWMD SWERP application package and one RAI response.
- 3. Cyriacks – Prepare one (1) FWC permit application for burrowing owls or gopher tortoise.

TOTAL FEES

Firm	Basic Services	Optional Services	Firm Subtotal
EAC	\$ 165,845.58	--	\$ 165,845.58
Brown & Phillips	\$ 7,480.80	\$ 8,864.80	\$ 16,345.60
Cyriacks	\$ 11,405.04	\$ 6,162.93	\$ 17,567.97
Tierra South Florida	\$ 6,745.00	--	\$ 6,745.00
Subtotal Professional Services	191,476.42	15,027.73	206,504.15



EAC Staff Hours & Fee

Estimate of Work Effort and Cost

Name of Project:		Kirk Road L-7 to Summit				Consultant Name:		EAC Consulting, Inc.						
PBC Project Number:		2018505				Consultant Project Number:		18038.HW03-BD						
						Date:		4/28/2025						
Task Description	Total Staff Hours	Staff Categories								Staff Hours By Activity	Salary Cost By Activity	Average Rate Per Task		
		Project Manager	Principal	Senior Engineer	Project Designer	Engineer Intern								
		\$70.78	\$79.66	\$74.66	\$35.51	\$36.63								
BASIC SERVICES														
1 General Tasks	11.0	9.0	1.0	0.0	1.0	0.0					11.0	\$752.19	\$	68.38
2 Roadway Analysis	127.0	32.0	6.0	64.0	0.0	25.0					127.0	\$8,436.91	\$	66.43
3 Roadway Plans	330.0	66.0	17.0	66.0	82.0	99.0					330.0	\$17,491.45	\$	53.00
4 Drainage Analysis	300.0	75.0	15.0	150.0	0.0	60.0					300.0	\$19,900.20	\$	66.33
5 Drainage Plans	98.0	20.0	5.0	20.0	24.0	29.0					98.0	\$5,221.61	\$	53.28
6 Permits & Environmental	60.0	24.0	6.0	30.0	0.0	0.0					60.0	\$4,416.48	\$	73.61
Total Staff Hours (Basic Services)		926.0	226.0	50.0	330.0	107.0	213.0				926.0			
Total Staff Cost (Basic Services)			\$15,996.28	\$3,983.00	\$24,637.80	\$3,799.57	\$7,802.19					\$56,218.84	\$	60.71
OPTIONAL SERVICES														
1														
2														
Total Staff Hours (Optional Services)		0.0	0.0	0.0	0.0	0.0	0.0	0.0	0.0	0.0	0.0			
Total Staff Cost (Optional Services)			\$0.00	\$0.00	\$0.00	\$0.00	\$0.00	\$0.00	\$0.00	\$0.00	\$0.00	\$0.00	\$	-
EBO SBE Calculation for this Fee Summary														
		SBE \$		Non-SBE \$										
EAC Consulting, Inc.		\$	-	\$165,845.58										
Brown & Phillips, Inc.		\$	16,345.60	\$ -										
Cyracks Environmental Consulting Services, Inc.		\$	-	\$17,567.97										
Tierra South Florida, Inc.		\$	-	\$6,745.00										
Subconsultant 4														
Subconsultant 5														
Totals		\$	16,345.60	\$ 190,158.55										
SA#1 SBE % Achieved				7.91%										
Overall Project Weighted SBE % Achieved				20.34%										
SBE % Committed				17.00%										
Overall Project Weighted SBE% Achieved Calculation														
Contract	Total Fee	SBE Firms				Total SBE Fee	SBE%							
		Brown & Phillips	HSQ Group											
Original Contract	\$ 357,510.18	\$ 64,293.80	\$ 34,115.95	\$ 98,409.75	27.53%									
SA#1	\$206,504.15	\$ 16,345.60	\$ -	\$ 16,345.60	7.91%									
Total	\$ 564,014.33	\$ 80,639.40	\$ 34,115.95	\$ 114,755.35	20.34%									
Basic Services:														
Salary Related Costs:												\$36,218.84		
Contract Multiplier:												2.95		
Subtotal Basic Services (Prime Firm):												\$165,845.58		
Basic Services (Brown & Phillips, Inc.) (Multiplier = 3.0)												\$7,480.80		
Basic Services (Cyracks Environmental Consulting Services, Inc.) (Multiplier = 3.0)												\$11,405.04		
Basic Services (Tierra South Florida, Inc.)												\$6,745.00		
Subtotal Basic Services (Subconsultants)												\$25,630.84		
Basic Services Total:												\$191,476.42		
Reimbursables:														
Prime Consultant												\$0.00		
Subconsultant 1												\$0.00		
Permit Fees												\$0.00		
Printing												\$0.00		
Reimbursables Total:												\$0.00		
Optional Services:														
Prime Consultant (Unloaded)												\$0.00		
Contract Multiplier												2.95		
Prime Consultant (Loaded)												\$0.00		
Brown & Phillips, Inc. (Multiplier = 3.0)												\$8,864.80		
Cyracks Environmental Consulting Services, Inc. (Multiplier = 3.0)												\$6,162.93		
Tierra South Florida, Inc.												\$0.00		
Sketch and Legal Descriptions (Survey Firm)												\$0.00		
Optional Services Total:												\$15,027.73		
Grand Total Estimated Fees:												\$206,504.15		

EAC Consulting, Inc.
Kirk Rd. from LWDD L-7 Canal to Summit Blvd.
Palm Beach County Project No. 2018505

Estimate of Work Effort and Cost

Name of Project:		Kirk Road L-7 to Summit					Consultant Name:		EAC Consulting, Inc.			
PBC Project Number:		2018505					Consultant Project Number:		18038.HW03-BD			
							Date:		12/31/2024			
Task Description	Total Staff Hours	Staff Categories							Staff Hours By Activity	Salary Cost By Activity	Average Rate Per Task	
		Project Manager	Principal	Senior Engineer	Project Designer	Engineer Intern	x	x				
		\$70.78	\$79.66	\$74.66	\$35.51	\$36.63	\$0.00	\$0.00				
BASIC SERVICES												
1 General Tasks	11.0	9.0	1.0	0.0	1.0	0.0			11.0	\$752.19	\$ 68.38	
2 Roadway Analysis	127.0	32.0	6.0	64.0	0.0	25.0			127.0	\$8,436.91	\$ 66.43	
3 Roadway Plans	330.0	66.0	17.0	66.0	82.0	99.0			330.0	\$17,491.45	\$ 53.00	
4 Drainage Analysis	300.0	75.0	15.0	150.0	0.0	60.0			300.0	\$19,900.20	\$ 66.33	
5 Drainage Plans	98.0	20.0	5.0	20.0	24.0	29.0			98.0	\$5,221.61	\$ 53.28	
6 Permits & Environmental	60.0	24.0	6.0	30.0	0.0	0.0			60.0	\$4,416.48	\$ 73.61	
Total Staff Hours (Basic Services)		926.0	226.0	50.0	330.0	107.0	213.0	0.0	0.0	926.0		
Total Staff Cost (Basic Services)			\$15,996.28	\$3,983.00	\$24,637.80	\$3,799.57	\$7,802.19	\$0.00	\$0.00		\$56,218.84	\$ 60.71
OPTIONAL SERVICES												
1	0.0											
2	0.0											
Total Staff Hours (Optional Services)		0.0	0.0	0.0	0.0	0.0	0.0	0.0	0.0	0.0		
Total Staff Cost (Optional Services)			\$0.00	\$0.00	\$0.00	\$0.00	\$0.00	\$0.00	\$0.00		\$0.00	\$ -
Basic Services:												
Salary Related Costs:										\$56,218.84		
Contract Multiplier										2.95		
Subtotal Basic Services (Prime Firm):										\$165,845.58		
Basic Services (Subconsultant 1)										\$0.00		
Basic Services(Subconsultant 2)										\$0.00		
Subtotal Basic Services (Subconsultants)										\$0.00		
Basic Services Total:										\$165,845.58		
Reimbursables:												
Prime Consultant										\$0.00		
Subconsultant 1										\$0.00		
Permit Fees										\$0.00		
Printing										\$0.00		
Reimbursables Total:										\$0.00		
Optional Services:												
Prime Consultant (Unloaded)										\$0.00		
Contract Multiplier										2.95		
Prime Consultant (Loaded)										\$0.00		
Subconsultant 1										\$0.00		
Sketch and Legal Descriptions (Survey Firm)										\$0.00		
Optional Services Total:										\$0.00		
Grand Total Estimated Fees:										\$165,845.58		

EAC Consulting, Inc.
Kirk Rd. from LWDD L-7 Canal to Summit Blvd.
Palm Beach County Project No. 2018505

Legend: Red Highlight - Hours for previously underscoped, completed work.

Project Activity 1: General Tasks						
Task No.	Task	Units	No of Units	Hours/ Unit	Total Hours	Comments
1.1	Public Involvement	LS	0	0		
1.2	Renderings and Fly Throughs	EA	0	0		
1.3	PowerPoint Presentation	EA	0	0		
1.4	Public Meeting Preparations	EA	0	0		
1.5	Public Meeting Attendance/Followup	EA	0	0		
1.6	Value Engineering Review	LS	0	0		
1.7	Post Design Services	LS	0	0		
1.8	Railroad, Transit, and/or Airport Coordination	LS	0	0		
1.9	Project Manager Meetings	EA	11	1	11	3. Drainage Meetings (8 @ 1hr = 9hr) 4. Utility Meeting (1 @ 1hr = 2hr)
1. General Tasks Total					11 ✓	

EAC Consulting, Inc.
Kirk Rd. from LWDD L-7 Canal to Summit Blvd.
Palm Beach County Project No. 2018505

Legend: Red Highlight - Hours for previously underscoped, completed work.

Project Activity 2: Roadway Analysis						
Task No.	Task	Units	No of Units	Hours/ Unit	Total Hours	Comments
2.1	Typical Section Package	LS	0	0		
2.2	Horizontal /Vertical Master Design Files	LS	1	48	48	Redesign vertical alignment to not impact existing base; adjust EOP/gutter profiles; perform new back of sidewalk profile analysis
2.3	Roundabout Design Analysis	LS	0	0		
2.4	Design Report	EA	0	0		
2.5	Computation Book & Quantities	EA	1	8	8	Update for all design additions and revisions.
2.6	Cost Estimate	EA	1	12	12	Update for all design additions and revisions.
2.7	Technical Special Provisions and Modified Special Provisions	LS	0	0		
2.8	ROW Impact Analysis	LS	0	0		
2.9	Other Roadway Analyses	LS	1	54	54	1. Cross Section Design Files (1 @ 48hr = 48hr) (Analysis of cross slopes to lessen R/W impacts at Back of Sidewalk and Driveways per 10/23/2023 comment review meeting. 2. Utilities (1 @ 6hr = 6hr)
2.10	Monitor Existing Structures	LS	0	0		
2.11	Field Review	EA	0	0		
2.12	Technical Meetings	EA	5	1	5	1. 30/60/90/100% Comment Review Meeting (1 @ 1hr = 1hr) 2. Progress Meetings (2 @ 1hr = 2hr) 3. Phase Review Meetings (2 @ 1hr = 2hr)
2. Roadway Analysis Total					127	✓

EAC Consulting, Inc.
Kirk Rd. from LWDD L-7 Canal to Summit Blvd.
Palm Beach County Project No. 2018505

Legend: Red Highlight - Hours for previously underscoped, completed work.

Project Activity 3: Roadway Plans						
Task No.	Task	Units	No. of Units or Sheet	Hours/ Unit or Sheet	Total Hours	Comments
3.1	Key Sheet	Sheet	2	0.5	1	Update Key Sheet and Signature Sheet for additional roadway and pond sheets added to set.
3.2	Typical Sections	EA	0	0		
3.3	Typical Section Details	EA	0	0		
3.4	General Notes/Pay Item Notes/Summary of Quantities	Sheet	1	2	2	Update to General Notes.
3.5	Project Control Sheet – Survey Plans	Sheet	0	0		
3.6	Master Plan	Sheet	0	0		
3.7	Plan/Profile Sheet	Sheet	5	12	60	1. Correct 5 plan/profile sheets for new vertical alignment (5 Sheets * 10hr = 50hr) 2. Update to drainage structures on 5 plan/profile sheets (5 Sheets * 2hr = 10hr) due to removal of french drain and redesign of storm sewer system for proposed pond.
3.8	Profile Sheet	Sheet	11	3	33	11 sidestreet profiles (not accounted for in original scope)
3.9	Plan Sheet	Sheet	0	0		
3.10	Driveway Profiles	EA	0	3		
3.11	Special Profiles	Sheet	1	29	29	1. 2 Pond Driveways, 1 on Kirk Rd and 1 on Melear St. (2 Units * 4hr = 8hr) 2. Update 28 driveway profiles for new vertical alignment (28 Units * 0.75hr = 21hr)
3.12	Back-of-Sidewalk Profile Sheet	Sheet	1	52	52	1. Added back of sidewalk sheets to the plans w/ 2 panels/sheet (4 Sheets * 10hr = 40hr) 2. Revise driveways to minimize R/W impacts per 10/23/2023 comment review meeting (6 Units * 2hr = 12hr)
3.13	Intersection Layout Details	Sheet	0	0		
3.14	Plateau Intersection Detail	Sheet	0	0		
3.15	Miscellaneous Details	EA	0	0		
3.16	Right-of-Way Acquisition Exhibit	Sheet	0	0		
3.17	Roadway Soil Survey Sheets	Sheet	1	8	8	
3.18	Railroad Detail Sheets	Sheet	0	0		
3.19	Cross Sections	EA	1	135	135	1. Revise cross section sheets for new vertical alignment. Used 50' x-sections which adds 26 new x-sections to the project (26 New X-Sections * 3hr = 78hr) and revisions (50 * 0.75hr = 38hr) 2. Revise 18 "Drainage Structures" sheets and 19 "Cross Section" sheets at 0.5 hr/sheet ((18 DS + 19 CS) * 0.5hr = 19hr)

EAC Consulting, Inc.
Kirk Rd. from LWDD L-7 Canal to Summit Blvd.
Palm Beach County Project No. 2018505

Legend: Red Highlight - Hours for previously underscoped, completed work.

Project Activity 3: Roadway Plans						
Task No.	Task	Units	No. of Units or Sheet	Hours/ Unit or Sheet	Total Hours	Comments
3.20	Temporary Traffic Control Plans	Sheet	0	0		Contractor's responsibility
3.21	Temporary Traffic Control Detail Sheets	Sheet	0	0		Contractor's responsibility
3.21	Special Details	Sheet	1	10	10	Mesear St access road detail.
3.22	Cross-Section Pattern Sheets	Sheet	0	0		
3.23	Tree Disposition Plan Sheets	Sheet	0	0		Tree disposition not part of scope. Anticipated tree removal as part of clearing and grubbing
3.24	Tree Disposition Plan Tables and Schedules	Sheet	0	0		Tree disposition not part of scope. Anticipated tree removal as part of clearing and grubbing
3. Roadway Plans Total					330	

EAC Consulting, Inc.
Kirk Rd. from LWDD L-7 Canal to Summit Blvd.
Palm Beach County Project No. 2018505

Legend: Red Highlight - Hours for previously underscoped, completed work.

Project Activity 4: Drainage Analysis						
Task No.	Task	Units	No of Units	Hours/ Unit	Total Hours	Comments
4.1	Drainage Map Hydrology	LF	2	6	12	1. Update to hydrology for new pond area and offsite adjacent areas (1 unit * 6hr = 6hr). 2. Update drainage map to match revised profile. (1 unit * 6hr = 6hr)
4.2	Determine Base Clearance Water Elevation	EA	0	0		
4.3	Pond Siting Analysis and Report	EA	1	54	54	Standard Complexity. Based on 42 hours for analysis and 12 hours for pond siting report. Pond siting report to determine viability of 2 pond sites. Option 1 to use 1 pond for both basins. Option 2 to use 2 ponds for both basins independently.
4.4	Design of Cross Drains	EA	0	0		
4.5	Design of Roadside Ditches	LF	0	0		
4.6	Design of Storm Drains	EA	1	115	115	Original contract under negotiated Analysis Design of Storm Drains. PBC allows 2.5hr per structure. Original Contract was for only 16str @ 1hr/str = 16hr. Previous 96% submittal on 2-16-23 had 45 structures. Supplemental Hours calculated as (45str * 2.5hr/str) - 16hr = 96hr New pond will add estimated 3 structures. 3str * 2.5hr/str = 8hr Hours for redesigning storm sewer system pipe sizes and stormtabs due to Pond. Estimate 0.25hr per Structure = 45str * 0.25hr/str = 11hr
4.7	French Drain Systems	LF	0	0		New design will use ponds for treatment instead of french drain. No French Drain anticipated.
4.8	Drainage Design Report	LS	1	24	24	1. Report to be revised to include pond. Design documentation has already been started from previous submittals. (1 * 16hr = 16hr) 2. Update Drainage Report due to previous out of scope profile changes. (1 * 8hr = 8hr)
4.9	Bridge Hydraulic Report	EA	0	0		
4.10	Technical Special Provisions / Modified Special Provisions	LS	1	0		
4.11	Design of Stormwater Management Facility (Offsite or Infield Pond)	LS	1	75	75	Pond design is complex. High ground water, large offsite flows, combining two existing basins into one basin, complex discharge configuration to meet pre/post-development discharge to both canals. Hours are for the design of 1 pond to treat entire project, the design of more than 1 pond is not included in this scope.
4.12	Cost Estimate	LS	3	4	12	Engineer's Cost Estimate for ponds. 4hrs per submittal. 3 submittals, 65%, 96%, 100%.
4.13	Field Reviews	LS	1	4	4	1 Staff @ 4hrs
4.14	Technical Meetings	LS	1	4	4	1. Pond Siting Review Meeting (1 staff @ 1 meetings @ 1hr = 1hr) 2. 100% Comment Review Meeting (1 staff @ 1 meeting @ 1 hr = 1hr) 3. Phase Review Meetings (1 staff @ 2 meetings @ 1hr = 2hr)
4. Drainage Analysis Total					300	

EAC Consulting, Inc.
Kirk Rd. from LWDD L-7 Canal to Summit Blvd.
Palm Beach County Project No. 2018505

Legend: Red Highlight - Hours for previously underscoped, completed work.

Project Activity 5: Drainage Plans							
Task No.	Task	Scale	Units	No. of Units or Sheet	Hours/ Unit or Sheet	Total Hours	Comments
5.1	Drainage Area Map		Sheet	0.5	12	6	Drainage Map to be revised. Assume 50% of mid-range complexity hours. (50% * 0.5 miles * 24hr/miles = 6hr)
5.2	Box Culvert Detail Sheet		Sheet	0	0		
5.3	Drainage Structure		EA	1	75	75	Original contract under negotiated Drainage Structure Cross Sections. Original contract hours were based on an estimated 16 structures but current project has 46 structures. Original Contract was for only 16str @ 2hr/str = 32hr. Previous 96% submittal on 2-16-23 had 45 structures. Supplemental Hours calculated as (45str * 2hr/str) - 32hr = 58hr
							New pond will add estimated 3 structures. 3str * 2hr/str = 6hr
							Hours to update the drainage structure cross sections due to the Pond. Pipe sizes and direction will change, french drain to be removed. Structure location should remain the same. Estimate 0.25hr per Structure = 45str * 0.25hr/str = 11hr
5.4	Miscellaneous Drainage Detail Sheets		Sheet	0	0		
5.5	Lateral Ditch Plan/Profile		LF	0	0		
5.6	Lateral Ditch Cross Sections		EA	0	0		
5.7	Retention/Detention Ponds Detail Sheets		Sheet	1	8	8	Pond detail sheets.
5.8	Retention Pond Cross Sections		EA	1	8	8	No pond alignment should be needed. Kirk Rd alignment can be used.
5.9	SWPPP Sheets		Sheet	1	1	1	Update to erosion control plan to include pond.
5. Drainage Plans Total						98 ✓	

EAC Consulting, Inc.
Kirk Rd. from LWDD L-7 Canal to Summit Blvd.
Palm Beach County Project No. 2018505

Legend: Red Highlight - Hours for previously underscoped, completed work.

Project Activity 6: Permits & Environmental						
Task No.	Task	Units	No. of Units	Hours/ Units	Total Hours	Comments
6.1	Pond Site Alternatives	EA	0	0		
6.2	Establish Wetland Jurisdictional Lines	LS	1	0		
6.3	Existing Permit Analysis	LS	1	0		
6.4	Complete and Submit All Required Permit Applications	EA	1	60	60	Prepare updated permit applications to include new pond and obtain permits from SFWMD and LWDD. To be completed by EAC.
6.5	Prepare Dredge and Fill Sketches	LS	1	0		
6.6	Mitigation Coordination and Meetings	EA	0	0		
6.7	Technical Meetings	EA	0	0		
6. Permits and Environmental Total					60	

Cyriacks Staff Hours & Fee



December 3, 2024

Kirk Road LWDD L-7 Canal to Summit Boulevard

SCOPE OF WORK

8.1 Preliminary Project Research

This task includes updating/ collecting desktop data from available sources such as from the Florida Fish and Wildlife Conservation Commission (FWC), U.S. Fish and Wildlife Service (USFWS), Florida Department of Environmental Protection (FDEP), National Wetlands Inventory (NWI), etc. Also includes reviewing any available documents and permits.

8.2.1 Pond Site Alternatives

This task includes the review of two pond locations for wetland habitats.

8.2.3 Species Surveys

CECOS staff will conduct an update to the threatened/ endangered general species survey adjacent to the roadway area and the two pond locations. This task also includes the preparation of associated GIS mapping.

8.15 Other Environmental Permits

This task includes an updated field review of the trees identified as to be impacted by construction. CECOS will prepare/ update the tree disposition table. These updates are to be included in the Palm Beach County (PBC) Environmental Resource Management's (ERM) Native Vegetation Removal Permit.

Note: Disposition table to include scientific name, diameter at breast height (dbh), tree disposition, location, and health of the tree.

8.16 Contamination Impact Analysis

CECOS will conduct a desktop analysis / field review of the two pond locations to identify potentially contaminated sites within 500 feet. CECOS will analyze impacts to potentially contaminated sites including conducting site-specific regulatory file review and historic aerial review. Findings will be documented in a brief summary Technical Memorandum.

8.18 Technical Meetings

This task includes attendance at virtual meetings (6) with permitting agencies and Palm Beach County. Includes preparation of meeting minutes.

Optional Services

8.4.1 Complete and Submit All Required Wetland Permit Applications

This task will involve assisting with the preparation of environmental issues for the South Florida Water Management District's (SFWMD) Statewide Environmental Resource Permit (SWERP) application package, including assisting with the preparation and submission of one (1) Request for Additional Information (RAI).

8.4.2 Complete and Submit All Required Species Permit Applications

CECOS will obtain one Florida Fish and Wildlife Conservation Commission (FWC) permit application for either the Burrowing Owl or the Gopher Tortoise, contingent upon the positive identification of these species during the previously tasked field verification.

Cyriacks Environmental Consulting Services, Inc.
Kirk Rd. from LWDD L-7 Canal to Summit Blvd.
Palm Beach County Project No. 2018505

Estimate of Work Effort and Cost

Name of Project:		Kirk Road L-7 to Summit						Consultant Name:		Cyriacks Environmental Consulting Services, Inc.		
PBC Project Number:		2018505						Consultant Project Number:		18038.HW03-BD		
								Date:		12/17/2024		
Task Description	Total Staff Hours	Staff Categories							Staff Hours By Activity	Salary Cost By Activity	Average Rate Per Task	
		Project Manager	Principal	Chief Scientist	Sr Scientist	Env Scientist	GIS Analyst	Staff Classification 8				
		\$0.00	\$68.09	\$50.76	\$40.00	\$24.07	\$20.00	\$0.00				
BASIC SERVICES												
6 Permits & Environmental	82.0	0.0	12.0	29.0	33.0	8.0	0.0	0.0	82.0	\$3,801.68	\$ 46.36	
Total Staff Hours (Basic Services)		82.0	0.0	12.0	29.0	33.0	8.0	0.0	0.0	82.0		
Total Staff Cost (Basic Services)			\$0.00	\$817.08	\$1,472.04	\$1,320.00	\$192.56	\$0.00	\$0.00	\$3,801.68	\$ 46.36	
OPTIONAL SERVICES												
1 Permits & Environmental - SFWMD SWERP	12.0	0.0	2.0	4.0	5.0	1.0	0.0	0.0	12.0	\$563.29	\$ 46.94	
2 Permits & Environmental - FWC Permit Application	32.0	0.0	5.0	11.0	13.0	3.0	0.0	0.0	32.0	\$1,491.02	\$ 46.59	
3	0.0											
4	0.0											
Total Staff Hours (Optional Services)		44.0	0.0	7.0	15.0	18.0	4.0	0.0	0.0	44.0		
Total Staff Cost (Optional Services)			\$0.00	\$476.63	\$761.40	\$720.00	\$96.28	\$0.00	\$0.00	\$2,054.31	\$ 46.69	
Basic Services:												
Salary Related Costs:										\$0.00		
Contract Multiplier:										2.95		
Subtotal Basic Services (Prime Firm):										\$0.00		
Basic Services (Subconsultant 1)										\$0.00		
Basic Services (Subconsultant 2)										\$0.00		
Basic Services (Cyriacks) (Multiplier = 3.0)										\$11,405.04		
Subtotal Basic Services (Subconsultants)										\$11,405.04		
Basic Services Total:										\$11,405.04		
Reimbursables:												
Prime Consultant										\$0.00		
Subconsultant I										\$0.00		
Permit Fees										\$0.00		
Printing										\$0.00		
Reimbursables Total:										\$0.00		
Optional Services:												
Prime Consultant (Unloaded)										\$0.00		
Contract Multiplier										2.95		
Prime Consultant (Loaded)										\$0.00		
Cyriacks (Multiplier = 3.0)										\$6,162.93		
Sketch and Legal Descriptions (Survey Firm)										\$0.00		
Optional Services Total:										\$6,162.93		
Grand Total Estimated Fees:										\$17,567.97		

Cyriacks Environmental Consulting Services, Inc.
Kirk Rd. from LWDD L-7 Canal to Summit Blvd.
Palm Beach County Project No. 2018505

Project Activity 6: Permits & Environmental						
Task No.	Task	Units	No. of Units	Hours/ Units	Total Hours	Comments
6.1	Pond Site Alternatives	EA	1	4	4	Review for wetlands (Species and Contamination Included in 6.8 and 6.9)
6.2	Establish Wetland Jurisdictional Lines	LS	1	0		
6.3	Existing Permit Analysis	LS	1	6	6	Preliminary Project Research - Update environmental research, permits
6.4	Complete and Submit All Required Permit Applications	EA	1	30	30	1. Palm Beach County Tree Permit - Tree survey update (8hr x 2 staff = 16hr), field data processing (4hr), determine tree impacts and prepare/update disposition table (10hr). Application info included in original SHE.
6.5	Prepare Dredge and Fill Sketches	LS	1	0		
6.6	Mitigation Coordination and Meetings	EA	0	0		
6.7	Technical Meetings	EA	1	6	6	1. Progress Meetings - Virtual (4 @ 1hr = 4hr) 2. Other Meetings (2 @ 1hr = 2hr)
6.8	Species Surveys	LS	1	20	20	Re-do presence/absence of gopher tortoise, burrowing owl, or other listed wildlife species & GPS locations of any burrows or nests observed (2 staff x 8hr = 16hr) - includes travel & field prep; update GIS map (4hr)
6.9	Contamination Impact Analysis	LS	1	16	16	Desktop analysis, field review and documentation (brief memo) for contamination for 2 pond sites
6. Permits and Environmental Total					82	

Cyriacks Environmental Consulting Services, Inc.
Kirk Rd. from LWDD L-7 Canal to Summit Blvd.
Palm Beach County Project No. 2018505

Project Activity 6: Permits & Environmental (Optional Services)						
Task No.	Task	Units	No. of Units	Hours/ Units	Total Hours	Comments
6.1	Pond Site Alternatives	EA	0	0		
6.2	Establish Wetland Jurisdictional Lines	LS	0	0		
6.3	Existing Permit Analysis	LS	0	0		
6.4	Complete and Submit All Required Permit Applications	EA	2	N/A	44	1. Optional Services: Assist Design Engineer with preparation of environmental issues for SFWMD SWERP application package (8hr); assist with preparation and submittal of one RAI responses (1 x 4 hrs = 4 hrs). Engineering hours not included. 2. Optional Services: Prepare one (1) FWC permit application for burrowing owls or gopher tortoise (32hr).
6.5	Prepare Dredge and Fill Sketches	LS	0	0		
6.6	Mitigation Coordination and Meetings	EA	0	0		
6.7	Technical Meetings	EA	0	0		
6.8	Species Surveys	LS	0	0		
6.9	Contamination Impact Analysis	LS	0	0		
6. Permits and Environmental Total					44	

Brown & Phillips Staff Hours & Fee



March 18, 2024
Revised December 11, 2024

Mr. Gregg Dubinsky, PE
EAC Consulting, Inc.
5959 Blue Lagoon Drive, Suite 308
Miami, FL 33126

**Re: Kirk Road from LWDD L-7 Canal to Summit Boulevard
Palm Beach County Project No. 2018505
Two Pond Sites Boundary & Topographic Surveys and Optional Test Holes**

Dear Gregg:

Thank you for the opportunity to provide you with the following services for the subject site. This proposal is based on documentation and information provided by your office. The scope of services is as follows:

SCOPE OF SERVICES

We will perform a specific purpose/topographic survey under this project and the new survey work will be performed in accordance with the current Standards of Practice and Palm Beach County Roadway Design Procedures dated January 2019, and all Palm Beach County requirements. All new survey work done will result in a signed and sealed survey drawing (all to be delivered to the County office for review and approval) in accordance with all applicable requirements, Roadway Design standards of 2019 (Appendix C, D & F), codes, rules and Statutes governing Surveying and Mapping.

POND SITES BOUNDARY AND TOPOGRAPHIC SURVEY

We will perform a topographic survey in order to develop a Digital Terrain Model suitable to provide 1/2-foot contours of the project limits in accordance with Rule 5J-17, Florida Administrative Code, pursuant to Chapter 472.027 of the Florida Statutes. The Survey work will be done in accordance with the current Standards of Practice and all County requirements in addition to the Thoroughfare Road Design Standards. The offsite drainage parcels will be used to supplement the drainage impacted from the expansion of the proposed roadway. The proposed pond sites are as follows:

- Pond 1 PCN 00434407080001550 1135 High Road
- Pond 2 PCN 00424412100050100 1198 Tangelo Avenue

1. Boundary Survey

A signed and sealed Boundary & Topographic Survey will be prepared and delivered in accordance with the current Standards of Practice as referenced in Rule 5J-17, Florida Administrative Code, pursuant to Chapter 472.027 of the Florida Statutes and in accordance with all County requirements in addition to the Thoroughfare Road Design Standards. We will review the title package as provided by Palm Beach County. The title package will be requested and updated to be current to within one year at the time of the survey.

Dubinsky
 December 11, 2024
 Page 2

2. Topographic Survey

We will perform a Topographic Survey in order to develop a Digital Terrain Model suitable to provide 1/2-foot contours of the project limits and in accordance with Rule 5J-17, Florida Administrative Code, pursuant to Chapter 472.027 of the Florida Statutes.

Survey limits of data collection for the adjacent features(s)/adjoiner(s) are as follows:

- Road: centerline of the road
- Adjoiner: 25' into adjoining property

The survey will consist of general ground elevation shots and breaks in grade with intervals not to exceed 50'. The Topographic Survey will include the following:

- a. All visible improvements and utilities unless otherwise noted
- b. Footprint of building structures when encountered
- c. Invert, top (rim/grate), and bottom elevations of storm drainage manholes, culverts, catch basins, and outfalls including pipe sizes and type if available.
- d. Invert, top, (rim), and bottom elevations of sanitary sewer manholes including pipe sizes and type if attainable.
- e. Type and height of walls, fences
- f. Overhead wires (horizontal location only)
- g. Individual native trees (and shrubs) over 4-inch caliper measured at breast height
- h. Outline of landscaped areas.
- i. Pavement markings.
- j. Finish floor elevations of adjacent residential structures.

3. Tree Survey

We will perform a Tree Survey on each of the parcels. Tree Surveys will include the following:

1. Location of tree lines.
2. Location of all native trees over 4-inch caliper measured at breast height.
3. Identify Cabbage Palms with trunks exceeding 8' in height.
4. Native trees will be tagged in the field by Brown & Phillips, Inc.

The Pond Sites Boundary and Topographic Surveys will be delivered signed and sealed and in accordance with the current Standards of Practice as referenced in Rule 5J-17, Florida Administrative Code, pursuant to Chapter 472.027 of the Florida Statutes and in accordance with all County requirements in addition to the Thoroughfare Road Design Standards. Deliverables will also include a digitally signed PDF file, a MicroStation file (.dgn) in PBC format, and a Digital Terrain Model (.xml).

OPTIONAL SERVICES:

S.U.E. UTILITY TARGETING

As an optional service, we will designate the underground utilities that service the site. We will then locate the designates and add them to the survey.

Dubinsky
December 11, 2024
Page 3

S.U.E. TEST HOLES

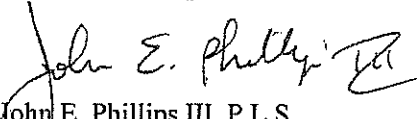
We will perform twelve (12) test holes as an optional service. We will then field locate the test holes (x,y,z). The test holes will be added to the digital file and furnished to EAC along with test hole reports.

CLOSURE

A certified signed and sealed Topographic Survey (11" x 17" sheets on a 1" = 40' scale) will be prepared and delivered (for the areas surveyed by Brown & Phillips, Inc.), to be included with the engineering plans (sheets SURX-SURXX) showing the existing right-of-way and supporting record information in addition to all improvements as outlined. We will also provide a printout of the right-of-way information in hard copy and digital format (CAD and PDF), as part of the approved survey plan submittal, showing labels referencing each document used to plot the right-of-way. We propose to provide EAC Consulting, Inc. and Palm Beach County Survey Section with 1 set certified, signed & sealed, of the Survey, 1 set in PDF digitally signed and CAD files in the version requested, as well as Microstation DGN, and TIN files. We will perform the scope of services for a **reimbursable fee of \$7,480.80** (\$3,937.20 for Pond Site 1 and \$3,543.60 for Pond Site 2), **plus \$7,864.80 for twelve (12) test holes (optional)**, see Table 'A' for an hourly breakdown. Any additional work will be done on an hourly basis as approved by you. Please do not hesitate to call me with any questions you might have regarding this proposal. We look forward to working with you on this project.

Sincerely,

Brown & Phillips, Inc.


John E. Phillips III, P.L.S.
Principal

JEP/mb

TABLE 'A' (1 OF 2)

Kirk Road from LWDD L-7 Canal to Summit Boulevard
PBCo. Project No. 2018505

Type of Survey: Pond Sites (2)
Date: December 11, 2024

TASK - Pond Site 1 PCN 00434407080001550 1135 High Road	SURVEY CREW (3 PERSON)	CAD TECHNICIAN	SURVEY TECHNICIAN	PROFESSIONAL LAND SURVEYOR	COMMENTS
Boundary, Topographic and Tree Survey	14	6	4	2	Boundary, topo, native trees
Total Hours:	14	6	4	2	
Rate/Hour	\$65.60	\$31.00	\$31.00	\$42.00	unloaded rates
Subtotal:	\$918.40	\$186.00	\$124.00	\$84.00	
Labor cost for Pond Site 1 (unloaded):					\$1,312.40
Multiplier:					3.00
Labor cost for Pond Site 1 (loaded):					\$3,937.20

TOTAL COST FOR POND SITE 1: \$3,937.20

TASK - Pond Site 2 PCN 00424412100050100 1198 Tangelo Avenue	SURVEY CREW (3 PERSON)	CAD TECHNICIAN	SURVEY TECHNICIAN	PROFESSIONAL LAND SURVEYOR	COMMENTS
Boundary, Topographic and Tree Survey	12	6	4	2	Boundary, topo, native trees
Total Hours:	12	6	4	2	
Rate/Hour	\$65.60	\$31.00	\$31.00	\$42.00	unloaded rates
Subtotal:	\$787.20	\$186.00	\$124.00	\$84.00	
Labor cost for Pond Site 2 (unloaded):					\$1,181.20
Multiplier:					3.00
Labor cost for Pond Site 2 (loaded):					\$3,543.60

TOTAL COST FOR POND SITE 2: \$3,543.60

GRAND TOTAL FOR TWO POND SITES: \$7,480.80



BROWN & PHILLIPS, Inc.
PROFESSIONAL SURVEYING SERVICES

TABLE 'A' (2 OF 2)

Kirk Road from LWDD L-7 Canal to Summit Boulevard
PBCo. Project No. 2018505

Type of Survey: Optional Test Holes

TASK - OPTIONAL TEST HOLES	SURVEY CREW (3 PERSON)	CAD TECHNICIAN	SURVEY TECHNICIAN	PROFESSIONAL LAND SURVEYOR	COMMENTS
Locate test holes	6		2		Field locate test holes (x,y,z)
Drawing		3	1	1	Prepare test hole reports and add test hole information to survey
Total Hours:	6	3	3	1	
Rate/Hour	\$65.60	\$31.00	\$31.00	\$42.00	unloaded rates
Subtotal:	\$393.60	\$93.00	\$93.00	\$42.00	
Labor cost (unloaded):					\$621.60
Multiplier:					3.00
Labor cost (loaded):					\$1,864.80

Other Direct Costs:	<u>quantity</u>	<u>unit</u>	<u>cost/unit</u>	<u>total</u>	
SUE Test Holes	12	each	\$500.00	\$6,000.00	
Total Other Direct Costs:					\$6,000.00
TOTAL COST FOR OPTIONAL TEST HOLES:					\$7,864.80 ✓

Other Optional Services:	<u>quantity</u>	<u>unit</u>	<u>cost/unit</u>	<u>total</u>	
SUE Utility Targeting	0.5	day	\$2,000.00	\$1,000.00	✓



Click Links below for more Info

es: .32
qft: 13974.05
ce: 220000
ale: 25-OCT-06
de: 33404
ate: FL 33404
ity: RIVIERA BEACH
ng: 3661 INTERSTATE PARK RD N STE 200
on: 1135 HIGH RD
er: SCHOOL BOARD OF PALM BEACH COUNTY FL
CN: 00434407080001550
ce: 0 ft / 0 miles

X



Tierra South Florida Staff Hours & Fee



February 29, 2024, Rev 1 1/3/25, Rev 2 2/6/25, Rev 3 4/10/25

EAC
5959 Waterford Drive, Suite 410
Miami, FL 33126
Attn: Mr. Gregg Dubinsky, P.E., Drainage Engineer II
email: gdubinsky@eacconsult.com

RE: **Proposal for Geotechnical Services**
 Proposed Drainage Ponds-Kirk Road from LWDD L-7 to Summit Blvd
 Palm Beach County, Florida
 TSFGeo Proposal No. 2402-151 Rev 3

Dear Gregg:

TSFGeo is pleased to transmit our geotechnical services proposal for the above-referenced project. Based on our understanding of the project, the proposed improvements will include two drainage ponds, 0.16 acre and 0.3 acre along Kirk Road from LWDD L-7 to Summit Blvd. This proposal includes an outline of our proposed scope of work, an estimate of the total fees, and our anticipated schedule for completion of the work.

PROPOSED SCOPE OF WORK

Based on our understanding of the project, we anticipate that the following services will be required:

Table 1 – Proposed Field Testing	
Location	Proposed Services
Drainage Ponds	<ul style="list-style-type: none">- Two (2) Standard Penetration Test (SPT) borings to depths of 20 feet at each pond location (4 total)- One (1) Borehole Permeability (BHP) Test at each pond (2 total)

Prior to drilling at the project site, TSFGeo will notify the local utility companies and request that underground utilities be marked (Sunshine State One Call). **Our experience, however, is that the utility companies will not mark privately owned utilities. Our proposal assumes that the Client will locate private utility lines, if any, in the field or clear boring locations of utility conflicts prior to mobilization of the drill rig. TSFGeo can recommend a utility line locating service upon request.**

Upon completion of the field exploration, some laboratory testing and visual classifications will be performed on selected samples.

The results of all drilling and laboratory testing will be evaluated by a geotechnical engineer. A report will be issued that contains the exploration data, a discussion of the site and subsurface conditions, and along with some construction considerations.

ESTIMATED FEES

It is proposed that the fee for the performance of the services outlined above is determined on a unit price basis and that the work be performed pursuant to TSFGeo’s General Conditions enclosed herewith and incorporated into this proposal. On the basis of the proposed quantities, our fee for the proposed geotechnical services will be **as follows**:

	Unit	# of Units	Unit Price		Total
I. FIELD INVESTIGATION					
Mobilization of Men and Equipment					
Track-Mounted Equipment	Trip	1	\$	350.00	\$ 350.00
Support Vehicle	Trip	1	\$	150.00	\$ 150.00
Standard Penetration Test Borings (By Truck-Mounted Equipment) 0 - 50 ft depth	L.F.	80	\$	13.00	\$ 1,040.00
Grout-Seal Boreholes (By Truck-Mounted Equipment) 0 - 50 ft depth	L.F.	80	\$	6.00	\$ 480.00
Casing Allowance (By Truck-Mounted Equipment) 0 - 50 ft depth	L.F.	80	\$	7.00	\$ 560.00
Borehole Permeability (BHP) Test	Test	2	\$	450.00	\$ 900.00
II. LABORATORY TESTING					
Visual Examination by Staff Engineer	Hour	2	\$	105.00	\$ 210.00
Natural Moisture Content Tests	Test	4	\$	20.00	\$ 80.00
Full Grain-Size Analysis - (8 sieves)	Test	4	\$	75.00	\$ 300.00
Grain-Size Analysis - Single Sieve	Test	4	\$	25.00	\$ 100.00
Organic Content Tests	Test	4	\$	50.00	\$ 200.00
Atterberg Limit Tests	Test	0	\$	80.00	\$ 0.00
Environmental Tests (pH, sulfates, chlorides, resistivity)	Set	0	\$	195.00	\$ 0.00
III. FIELD ENGINEERING AND TECHNICAL SERVICES					
Site Recon./Utility Coordination/Permit Sr. Engineering Technician	Hour	8	\$	70.00	\$ 560.00
IIIA. ENGINEERING AND TECHNICAL SERVICES					
Principal Engineer	Hour	1	\$	175.00	\$ 175.00
Senior Geotechnical Engineer	Hour	2	\$	150.00	\$ 300.00
Engineer, P.E.	Hour	8	\$	135.00	\$ 1,080.00
Draftperson	Hour	4	\$	65.00	\$ 260.00
TOTAL FEE FOR GEOTECHNICAL SERVICES				\$	6,745.00

The above estimate assumes that the site is accessible to our truck-mounted drill rig. Clearing of vegetation, if required for boring access, will need to be performed by others and separately budgeted. Our estimate covers the work needed to provide drilling services and geotechnical report. Not included are clearing to access boring locations, reports, reviews of foundation drawings, preparation of construction specifications, special conferences and any other work requested after submittal of our report.

SCHEDULE AND AUTHORIZATION

TSFGeo will proceed with the work after receipt of a signed copy of this proposal. With our present schedule, we can commence work within a few days of project approval (weather permitting and permit approval) and after utilities have been cleared. The fieldwork is expected to take about 2 days to complete. The test results can be submitted about 2 weeks after completion of the field exploration. Verbal preliminary recommendations can be made to appropriate parties prior to submittal of the written report.

OEBO SCHEDULE 1

SOLICITATION/PROJECT/BID NAME:

Kirk Road, Lake Worth Drainage District (LWDD) L-7 Canal to Summit Boulevard

SOLICITATION/PROJECT/BID NO.: 2018505

SOLICITATION OPENING/SUBMITTAL DATE: 4/17/2018

COUNTY DEPARTMENT: Engineering & Public Works

Section A

PLEASE LIST THE DOLLAR AMOUNT OR PERCENTAGE OF WORK TO BE COMPLETED BY THE PRIME CONTRACTOR/CONSULTANT* ON THE PROJECT:

NAME OF PRIME RESPONDENT/BIDDER: EAC Consulting, Inc.

ADDRESS: 1601 Belvedere Road, S205, West Palm Beach, FL 33406

CONTACT PERSON: Harold Desdunes

PHONE NO.: 305-265-5441

E-MAIL: hdesdunes@eacconsult.com

PRIME'S DOLLAR AMOUNT OR PERCENTAGE OF WORK: \$165,845.58 (80.31%)

Non-SBE

MBE

WBE

SBE

*SMWBE Prime's must include their percentage or dollar amount in the Total Participation line under section B.

☒

☐

☐

☐

Section B

PLEASE LIST THE DOLLAR AMOUNT OR PERCENTAGE OF WORK TO BE COMPLETED BY ALL SUBCONTRACTORS/SUBCONSULTANTS ON THE PROJECT BELOW:

Subcontractor/Sub consultant Name	(Check all Applicable Categories)				DOLLAR AMOUNT OR PERCENTAGE OF WORK					
	Non-SBE	MBE	WBE	SBE	Black	Hispanic	Women	Caucasian	Asian	Other
		Minority Business	Women Business	Small Business						
1. EAC Consulting, Inc. 1601 Belvedere Road, S205 West Palm Beach, FL 33406	<input checked="" type="checkbox"/>	<input type="checkbox"/>	<input type="checkbox"/>	<input type="checkbox"/>	80.31%					
2. Brown & Phillips 1880 Old Okeechobee Road, Suite 509 West Palm Beach, FL 33409	<input type="checkbox"/>	<input checked="" type="checkbox"/>	<input type="checkbox"/>	<input checked="" type="checkbox"/>	7.91%					
3. Cyrlacks Environmental Consulting Services, Inc 3001 Southwest 15th Street, Suite B Deerfield Beach, FL 33442	<input type="checkbox"/>	<input type="checkbox"/>	<input checked="" type="checkbox"/>	<input type="checkbox"/>			8.51%			
4. Tierra South Florida, Inc. 2765 Vista Parkway, Suite 10 West Palm Beach, FL 33411	<input type="checkbox"/>	<input checked="" type="checkbox"/>	<input type="checkbox"/>	<input type="checkbox"/>					3.27%	
5.	<input type="checkbox"/>	<input type="checkbox"/>	<input type="checkbox"/>	<input type="checkbox"/>						
(Please use additional sheets if necessary)					Total	88.22%	8.51%		3.27%	

Total Bid/Offer Price \$ 206,504.15

Total Certified S/M/WBE Participation \$ 40,658.57 (7.91% SBE)

I hereby certify that the above information is accurate to the best of my knowledge:

Harold Desdunes, PE

Sr. Vice President

Name & Authorized Signature

Title

Note:

1. The amount listed on this form for a Subcontractor/sub consultant must be supported by price or percentage listed on the properly executed Schedule 2 or attached signed proposal.

2. Only those firms certified by Palm Beach County at the time of solicitation due date are eligible to meet the established OEBO Affirmative Procurement Initiative (API). Please check the applicable box and list the dollar amount or percentage under the appropriate demographic category.

3. Modification of this form is not permitted and will be rejected upon submittal.

4. If a Mandatory API goal applies, failure to submit a properly executed Schedule 2 will result in a determination of non-response.

This Schedule is subject to the provisions of Emergency Ordinance 2025-014 approved by the BCC on June 3, 2025.

As a result, the M/WBE participation is not enforceable

A completed Schedule 2 is a binding document between the Prime Contractor/consultant and a Subcontractor/subconsultant (for any tier) and should be treated as such. All Subcontractors/subconsultants, including any tiered Subcontractors/subconsultants, must properly execute this document. If a Mandatory API goal applies, failure to submit a properly executed Schedule 2 will result in a determination of non-responsiveness to the solicitation. Each properly executed Schedule 2 must be submitted with the bid/proposal.

SOLICITATION/PROJECT NUMBER: 2018505
SOLICITATION/PROJECT NAME: Kirk Road, Lake Worth Drainage District (LWDD) L-7 Canal to Summit Boulevard

Prime Contractor: EAC Consulting, Inc. Subcontractor: Brown & Phillips Inc.
(Check box(s) that apply)

☒ SBE ☐ WBE ☒ MBE ☐ M/WBE ☐ Non-S/M/WBE Date of Palm Beach County Certification (if applicable): 1/31/25-1/30/28

The undersigned affirms they are the following (select one from each column if applicable):

Column 1 Column 2 Column 3
☒ Male ☐ Female ☒ African-American/Black ☐ Asian American ☐ Caucasian American ☐ Supplier
☐ Hispanic American ☐ Native American

S/M/WBE PARTICIPATION – S/M/WBE Primes must document all work to be performed by their own work force on this form. Specify in detail, the scope of work to be performed or items supplied with the dollar amount and/or percentage for each work item. When applicable, identify the line item(s) associated with the service/product being supplied. S/M/WBE credit will only be given for the areas in which the S/M/WBE is certified. A detailed quote/proposal may be attached to a properly executed Schedule 2 for additional information.

Line Item	Item Description	Unit Price	Quantity/ Units	Contingencies/ Allowances	Total Price/Percentage
	Topographic Survey	\$7,480.80	1 / LS	-	\$7,480.80
	Test Holes	\$655.40	12 / each	-	\$7,864.80
	SUE Utility Targeting	\$1,000.00	1 / LS	-	\$1,000.00

The undersigned Subcontractor/subconsultant is prepared to self-perform the above-described work in conjunction with the aforementioned project at the following total price or percentage: \$16,345.60

If the undersigned intends to subcontract any portion of this work to another Subcontractor/subconsultant, please list the business name and the amount below accompanied by a separate properly executed Schedule 2.

Not Applicable

Name of 2nd/3rd tier Subcontractor/subconsultant

Price or Percentage:

EAC Consulting, Inc.

Print Name of Prime

By:

Authorized Signature

Harold Desdunes, PE

Print Name

Sr. Vice President

Title

Date:

5/9/25

Brown & Phillips, Inc.

Print Name of Subcontractor/subconsultant

By:

Authorized Signature

John E. Phillips

Print Name

President

Title

Date:

05/07/2025



If you have experienced or witnessed a violation of the EBO Ordinance or would like to file a complaint, please scan the QR Code.

This Schedule is subject to the provisions of Emergency Ordinance 2025-014 approved by the BCC on June 3, 2025. As a result, the M/WBE participation is not enforceable.

A completed Schedule 2 is a binding document between the Prime Contractor/consultant and a Subcontractor/subconsultant (for any tier) and should be treated as such. All Subcontractors/subconsultants, including any tiered Subcontractors/subconsultants, must properly execute this document. If a Mandatory API goal applies, failure to submit a properly executed Schedule 2 will result in a determination of non-responsiveness to the solicitation. Each properly executed Schedule 2 must be submitted with the bid/proposal.

SOLICITATION/PROJECT NUMBER: 2018505
SOLICITATION/PROJECT NAME: Kirk Road, Lake Worth Drainage District (LWDD) L-7 Canal to Summit Boulevard

Prime Contractor: EAC Consulting, Inc. Subcontractor: Cyriacks Environmental Consulting Services, Inc.
(Check box(s) that apply)

☐SBE ☐WBE ☐MBE ☒M/WBE ☐Non-S/M/WBE Date of Palm Beach County Certification (if applicable):

The undersigned affirms they are the following (select one from each column if applicable):

Column 1 Column 2 Column 3
☐Male ☒Female ☐African-American/Black ☐Asian American ☒Caucasian American ☐Supplier
☐Hispanic American ☐Native American

S/M/WBE PARTICIPATION – S/M/WBE Primes must document all work to be performed by their own work force on this form. Specify in detail, the scope of work to be performed or items supplied with the dollar amount and/or percentage for each work item. When applicable, identify the line item(s) associated with the service/product being supplied. S/M/WBE credit will only be given for the areas in which the S/M/WBE is certified. A detailed quote/proposal may be attached to a properly executed Schedule 2 for additional information.

Line Item	Item Description	Unit Price	Quantity/Units	Contingencies/Allowances	Total Price/Percentage
1	Environmental Services	1	1		\$17,567.97

The undersigned Subcontractor/subconsultant is prepared to self-perform the above-described work in conjunction with the aforementioned project at the following total price or percentage: \$17,567.97

If the undersigned intends to subcontract any portion of this work to another Subcontractor/subconsultant, please list the business name and the amount below accompanied by a separate properly executed Schedule 2.

Not Applicable

Name of 2nd/3rd tier Subcontractor/subconsultant

Price or Percentage:

EAC Consulting, Inc.

Print Name of Prime

By:

Authorized Signature

Harold Desdunes, PE

Print Name

Sr. Vice President

Title

Date:

5/9/25

Cyriacks Environmental Consulting Services, Inc.

Print Name of Subcontractor/subconsultant

By:

Authorized Signature

Wendy Cyriacks

Print Name

President

Title

Date:

5/7/2025

This Schedule is subject to the provisions of Emergency Ordinance 2025-014 approved by the BCC on June 3, 2025. As a result, the M/WBE participation is not enforceable



If you have experienced or witnessed a violation of the EBO Ordinance or would like to file a complaint, please scan the QR Code.

A completed Schedule 2 is a binding document between the Prime Contractor/consultant and a Subcontractor/subconsultant (for any tier) and should be treated as such. All Subcontractors/subconsultants, including any tiered Subcontractors/subconsultants, must properly execute this document. If a Mandatory API goal applies, failure to submit a properly executed Schedule 2 will result in a determination of non-responsiveness to the solicitation. Each properly executed Schedule 2 must be submitted with the bid/proposal.

SOLICITATION/PROJECT NUMBER: 2018505
SOLICITATION/PROJECT NAME: Kirk Road, Lake Worth Drainage District (LWDD) L-7 Canal to Summit Boulevard

Prime Contractor: EAC Consulting, Inc. Subcontractor: Tierra South Florida, Inc.
(Check box(s) that apply)

☐SBE ☐WBE ☒MBE ☐M/WBE ☐Non-S/M/WBE Date of Palm Beach County Certification (if applicable):

The undersigned affirms they are the following (select one from each column if applicable):

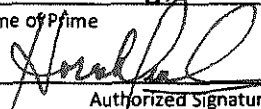
Column 1 Column 2 Column 3
☒Male ☐Female ☐African-American/Black ☒Asian American ☐Caucasian American ☐Supplier
☐Hispanic American ☐Native American

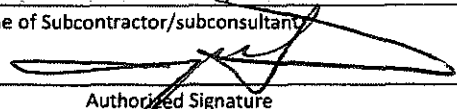
S/M/WBE PARTICIPATION – S/M/WBE Primes must document all work to be performed by their own work force on this form. Specify in detail, the scope of work to be performed or items supplied with the dollar amount and/or percentage for each work item. When applicable, identify the line item(s) associated with the service/product being supplied. S/M/WBE credit will only be given for the areas in which the S/M/WBE is certified. A detailed quote/proposal may be attached to a properly executed Schedule 2 for additional information.

Line Item	Item Description	Unit Price	Quantity/ Units	Contingencies/ Allowances	Total Price/Percentage
1	Geotechnical Engineering Services	\$6745.00	1	0	\$6745.00

The undersigned Subcontractor/subconsultant is prepared to self-perform the above-described work in conjunction with the aforementioned project at the following total price or percentage: \$6,745.00

If the undersigned intends to subcontract any portion of this work to another Subcontractor/subconsultant, please list the business name and the amount below accompanied by a separate properly executed Schedule 2.
Not Applicable
Name of 2nd/3rd tier Subcontractor/subconsultant Price or Percentage:

EAC Consulting, Inc.
Print Name of Prime
By: 
Authorized Signature
Harold Desdunes, PE
Print Name
Sr. Vice President
Title
Date: 5/9/25

Tierra South Florida, Inc.
Print Name of Subcontractor/subconsultant
By: 
Authorized Signature
Raj Krishnasamy, PE
Print Name
President
Title
Date: 5/8/2025



If you have experienced or witnessed a violation of the EBO Ordinance or would like to file a complaint, please scan the QR Code

This Schedule is subject to the provisions of Emergency Ordinance 2025-014 approved by the BCC on June 3, 2025. As a result, the M/WBE participation is not enforceable

Kirk Road, Lake Worth Drainage District (LWDD) L-7 Canal to Summit Boulevard					
Project # 2018505					
Contract API(s):		20%			
Contract Commitment:		17%			
GSC Date:		5/15/2018			
Executed By	Supplement #	Date Approved	Total Amount	SBE	
				Total \$	Total %
BCC		8/25/20	\$ 357,510.18	\$ 98,409.75	27.52%
BCC	1	Pending	\$ 206,504.15	\$ 16,345.60	7.91%
Project Totals \$			564,014.33	\$ 114,755.35	20.34%

This Schedule is subject to the provisions of Emergency Ordinance 2025-014 approved by the BCC on June 3, 2025. As a result, the M/WBE participation is not enforceable.



Palm Beach County
Compliance Summary Report

Vendor Number	Vendor Name	AM Best Rating	Insurance Carrier	Policy #	Eff. Date	Exp. Date	Coverage	Contract Number	Contract Name
DX00000662	EAC Consulting Inc.	Modified	Compliant					2018505	Kirk road from LWDD Canal L-7 to Summit Blvd.
		A++g , XV	St. Paul Protective Insurance Company	BA3Y6825652543G	7/1/2025	7/1/2026	Auto Liability		
		Ag , XV	The Continental Insurance Company	7092485176	7/1/2025	7/1/2026	Excess Liability		
		A++g , XV	The Charter Oak Fire Insurance Company	P6603Y681009COF25	7/1/2025	7/1/2026	General Liability		
		A++ , XV	Travelers Casualty and Surety Company of America	107279653	7/1/2025	7/1/2026	Professional Liability		
		A++g , XV	Travelers Casualty and Surety Company	UB3Y6857642543G	7/1/2025	7/1/2026	Workers Comp		

Risk Profile : Standard - Professional Services
Required Additional Insured : Palm Beach County Board of County Commissioners
Ownership Entity :