



**II. FISCAL IMPACT ANALYSIS**

**A. Five Year Summary of Fiscal Impact:**

Fiscal Years	2026	2027	2028	2029	2030
Capital Expenditures	\$326,217	-0-	-0-	-0-	-0-
Operating Costs	-0-	-0-	-0-	-0-	-0-
External Revenues	-0-	-0-	-0-	-0-	-0-
Program Income (County)	-0-	-0-	-0-	-0-	-0-
In-Kind Match (County)	-0-	-0-	-0-	-0-	-0-
<b>NET FISCAL IMPACT</b>	<b>\$326,217</b>	<b>-0-</b>	<b>-0-</b>	<b>-0-</b>	<b>-0-</b>
# ADDITIONAL FTE					
POSITIONS (Cumulative)	-0-	-0-	-0-	-0-	-0-

Is Item Included in Current Budget? Yes  No   
 Is this item using Federal Funds? Yes  No   
 Is this item using State Funds? Yes  No

Budget Account No:

Fund 3900 Dept 361 Unit 2012-010 Object 6505

Recommended Sources of Funds/Summary of Fiscal Impact:

Capital Outlay / Shell - Rock Road Improvements /  
 Jupiter Farms Rd, SIRWCD Canal 7 to SIRWCD Canal 6

Brief Description: New consultant service authorization (CSA) #5

**CSA #2**

• Basic Services	\$ 154,062.04
• Reimbursable	\$ 54,871.35
• Optional Services	\$ 23,532.70
<b>Total CSA #2</b>	<b>\$ 232,466.09</b>

**Estimated Staff Costs**

• Roadway Production	\$ 46,500.00
• Roadway Production: Right-of-Way	\$ 12,000.00
• Survey	\$ 12,000.00
• Traffic	\$ 23,250.00
<b>Total Staff Costs</b>	<b>\$ 156,000.00</b>

**Fiscal Impact \$ 326,216.09**

C. Departmental Fiscal Review:

*Danny Rancenberg*

**III. REVIEW COMMENTS**

A. OFMB Fiscal and/or Contract Dev. and Control Comments:

*AFB* 4/24/26  
 OFMB  
*JA 4/24*  
*aw 4/24*

*Trudi Mack* 4/23/26  
 Contract Dev. and Control  
 264.28.26

B. Approved as to Form and Legal Sufficiency:

*[Signature]* 4/30/26  
 Assistant County Attorney

C. Other Department Review:

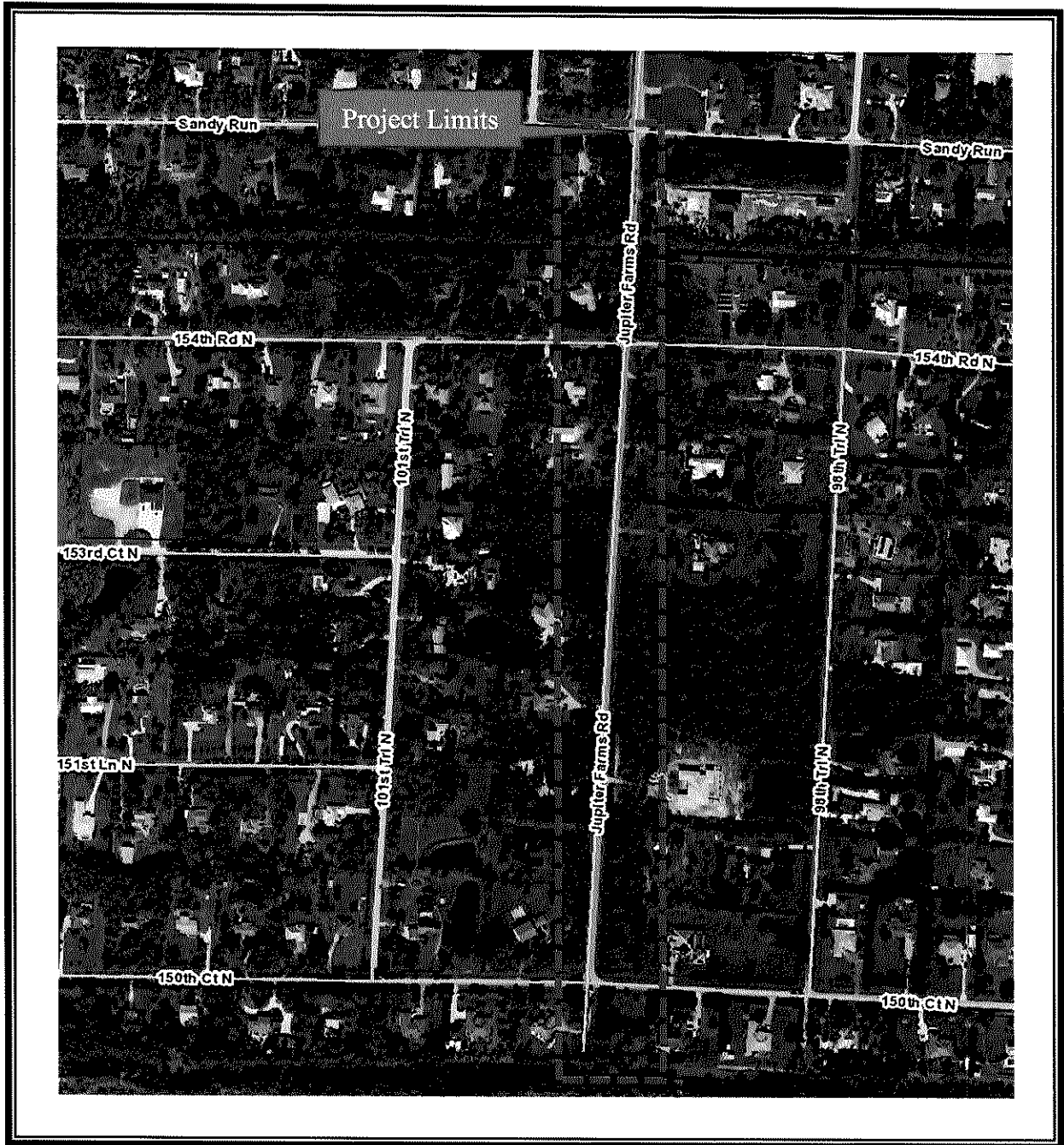
\_\_\_\_\_  
 Department Director

This summary is not to be used as a basis for payment.

**PROJECT LOCATION**

**JUPITER FARMS ROAD, SIRWCD CANAL 7 TO SIRWCD CANAL 6**

**Palm Beach County Project #2025902**



**LOCATION MAP**

**ATTACHMENT 1**

**CONSULTANT SERVICE AUTHORIZATION NO. 5**  
**UNDER THE CIVIL ENGINEERING**  
**PROFESSIONAL CONTINUING SERVICES CONTRACT**

Project Name: **Jupiter Farms Road, SIRWCD Canal 7 to SIRWCD Canal 6**

Project No: **2025902**

Commission District No.: **1**

	<b>SBE</b>
Participation for this authorization	<b>100%</b>
Participation to date for this Contract	<b>100%</b>
Contract Commitment	<b>94%</b>
This authorization is under the EBO Ordinance.	

**PALM BEACH COUNTY**

**BOARD OF COUNTY COMMISSIONERS**

**Account No.: 3900-361-2012-010-6505**

Consultant Service Authorization No. 5 (CSA) Civil Engineering Professional Continuing Services Contract dated May 6, 2025 (R2025-0547) (CONTRACT), between the COUNTY and the CONSULTANT identified herein is for the services described in **EXHIBIT A** and **EXHIBIT B** for this CSA.

1. CONSULTANT: Masse Consulting Services, LLC
2. Address: 2102 Vista Parkway, Suite 277 West Palm Beach, FL 33411
3. CONSULTANT shall begin work promptly on the requested Services, per the schedule attached as part of **EXHIBIT A**.
4. Scope of Services to be provided by CONSULTANT: Provide professional engineering services to Palm Beach County for the Jupiter Farms Road, SIRWCD Canal 7 to SIRWCD Canal 6 project. Design study of the existing pavement conditions and safety issues, and the development of construction plans in accordance with the attached **EXHIBIT A** dated February 6, 2026.
5. The compensation to be paid CONSULTANT for providing the requested services as detailed in **EXHIBIT B** shall be:

<input checked="" type="checkbox"/> Basic Services in a lump sum fee of	\$154,062.04
<input checked="" type="checkbox"/> Reimbursable Expenses capped at	\$ 54,871.35
<input checked="" type="checkbox"/> Optional Services capped at	<u>\$ 23,532.70</u>
<b>Totaling</b>	<b>\$232,466.09</b>

- OEBO Schedules 1 & 2 **EXHIBIT C**
- Project History **EXHIBIT D**

6. All terms of the CONTRACT shall apply to this CSA.

*This Contract, including all Schedules, Forms, and attachments, is subject to the County Emergency Ordinance 2025-014, approved by the BCC on June 3, 2025. As a result, the M/WBE participation will not be enforced.*

**CONSULTANT SERVICE AUTHORIZATION NO. 5**  
**UNDER THE CIVIL ENGINEERING**  
**PROFESSIONAL CONTINUING SERVICES CONTRACT**

IN WITNESS WHEREOF, this CSA is accepted as of the date signed by the COUNTY below, subject to the terms and conditions of the aforementioned CONTRACT.

CONSULTANT: **Masse Consulting Services, LLC**  
Federal ID: 84-2958439

COUNTY:  
Approved as to Terms and Conditions

Signed: *Basher Khan*

Typed Name: Md Abul Basher Khan

Title: Manager

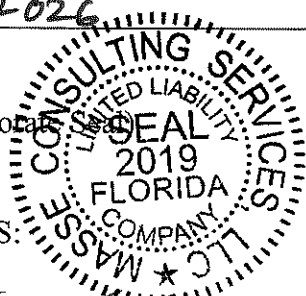
Date: 3/16/2026

By: *Morton L. Rose*  
Kof  
Typed Name: Morton L. Rose, P.E.

Title: Division Director

ATTEST WITNESS:

(Corporate)



Signed: *Fensun Madre*

Typed Name: FENSUN MADRE

Title: MANAGER

Date: 3/16/2026

**CONSULTANT SERVICE AUTHORIZATION NO. 5**  
**UNDER THE ANNUAL CIVIL ENGINEERING**  
**PROFESSIONAL SERVICES CONTRACT**

{SIGNATURE PAGES CONTINUED}

COUNTY: Palm Beach County, a Political  
Subdivision of the State of Florida, by and  
through its Board of County Commissioners

Signed: \_\_\_\_\_

Typed Name: Sara Baxter

Title: Mayor

Date: \_\_\_\_\_

ATTEST:

Michael A. Caruso

Clerk of the Circuit Court & Comptroller

By: \_\_\_\_\_

Deputy Clerk

Approved as to Form and Legal Sufficiency

By:  \_\_\_\_\_

Typed Name: Yelizaveta B. Herman

Title: Assistant County Attorney

*f:\roadway-cna\annuals\civil\masse\2025\2025902\_jupiter\_farms rd\esa and supplement template.docx*

**SCOPE OF SERVICES**  
FOR  
**JUPITER FARMS ROAD, SIRWCD CANAL 7 TO SIRWCD  
CANAL 6**

**PALM BEACH COUNTY PROJECT NO. 2025902**

*OK!  
Sandra Milam-Respic  
2/11/26*

**PREPARED FOR:**

Palm Beach County Engineering and Public Works Department  
Roadway Production Division  
2300 N. Jog Road, 3rd floor W., West Palm Beach, FL 33411

*Change for count all  
to scope Fee ok  
2/20/26*



**PREPARED BY:**

MASSE CONSULTING SERVICES, LLC  
2101 Vista Parkway, Suite 237, West Palm Beach, 33411  
Mobile Phone: (561) 568-3197  
[bkhan@masseconsultingfirm.com](mailto:bkhan@masseconsultingfirm.com)

- February 6, 2026 (revised)
- September 29, 2025 (revised)
- September 25, 2025 (revised)
- September 15, 2025 (revised)
- August 8, 2025 (revised)
- August 1, 2025 (revised)
- June 30, 2025

**SCOPE OF SERVICES**  
Jupiter Farms Road, SIRWCD Canal 7 to SIRWCD Canal 6  
Palm Beach County Project No.: 2025902

---

---

**INTRODUCTION**

Masse Consulting Services, LLC (Masse Consulting), in collaboration with its sub-consultants, is prepared to provide professional services on a Consultant Service Authorization (CSA) basis under the Civil Engineering Professional Continuing Services Contract (R2025-0547) for the proposed improvements to Jupiter Farms Road, from South Indian River Water Control District (SIRWCD) Canal 7 to SIRWCD Canal 6 (Project).

The total length of the project is estimated to be 0.55 miles. The Project will encompass conducting a study of the existing pavement conditions and safety issues, and the development of construction plans, as outlined in the subsequent sections.

**PROJECT UNDERSTANDING**

Jupiter Farms Road is a two-lane, undivided rural roadway without any bike lane or sidewalk, runs north-south with asphalt pavement from 150th Court North to SIRWCD Canal 6, and an approximately 250' dirt road from SIRWCD Canal 7 to 150th Court North. On September 30, 2022, Palm Beach County (County) conducted an assessment study through its consultant, Civil Design, Inc. (CDI), on Jupiter Farms Road between SIRWCD Canals 7 and 6 under the Courtesy Maintained Roads Assessment Study (PBC Project No. 2019023). The asphalt pavement is generally 2-10 feet wide for travel lanes. The existing drainage system consists of roadside swales that get deeper as the road continues to the north. The roadway is located within a 200' right-of-way. Roadside hazards include travel lanes without shoulders, falloffs to swales, and adjacent canals. The study found the roadway is substandard and requires paving, drainage, and safety improvements.

A scope clarification meeting with the County was held on May 27, 2025, to discuss the proposed improvements.

Based on our understanding of the Project, Masse Consulting will provide the following services:

- **Study:** The study will focus on assessing the existing pavement conditions, drop-off hazards in the clear zone, and a possible narrow travel lane on the east side at Canal 6 and prepare a report with findings for the design parameter review.
- **Safety Improvements:** Provide roadway improvements with unpaved shoulders, relocate and regrade roadside swales, and shield the drop-off hazards in the clear zone with guardrails.
- **Roadway Improvements:** Keep the existing 2-lane pavement on Jupiter Farms Road, widen as required to maintain 2-10' travel lanes, provide milling and resurfacing on the existing pavement, construct a new 2-lane roadway segment between SIRWCD Canal 7 and 150th Court North, which is currently a dirt road, and provide an end treatment with a t-turnaround at the south terminus point. There will be no proposed sidewalk; however, the County would like to make provisions for a future sidewalk on the west side of the road with proper grading.
- **Drainage Improvements:** Provide drainage analysis and design, which includes the relocation and design of roadside swales. The relocation of the swales requires the design and replacement of the existing culverts under the driveways.
- **Utility Coordination:** The project survey will be used for the initial utility contact plans. Masse Consulting will submit the project survey to the County for distribution to the utility owners. Assist the County with utility coordination and follow up directly with utility owners and keep the County informed.
- **Permit:** Prepare permit applications, submit them to the regulatory agencies, and obtain permits.

## SCOPE OF SERVICES

Jupiter Farms Road, SIRWCD Canal 7 to SIRWCD Canal 6  
Palm Beach County Project No.: 2025902

---

- **Right-of-Way:** No right-of-way (R/W) acquisition is anticipated to be required as the existing R/W is 200' per CDI study.
- **Public Involvement and Outreach:** Assist the County with public involvement. This includes, but is not limited to, preparing flyers and maps, and attending one meeting.
- **Submittals:** The submittals to the County will include design parameter review, 65%, 96%, 100%, and final Plans

The design and construction documents will adhere to the following regulatory standards and guidelines:

- Palm Beach County Thoroughfare Roadway Design Procedures (January 2019)
- Palm Beach County Land Development Design Standard Manual (February 2018)
- Manual of Uniform Minimum Standards for Design, Construction, and Maintenance for Street and Highways, commonly known as the Florida Greenbook (2023 Edition)
- South Indian River Water Control District Policies and Procedures Manual (February 20, 2025)
- FDOT Drainage Manual (January 2025) and all other applicable manuals
- FDOT FY 2024-25 Standard Plans for Road Construction
- SFWMD Environmental Resource Permit Information Applicants Handbook, vol 1 & 2, effective June 2024
- AASHTO "Geometrics Design of Highway and Streets", the latest edition
- Manual on Uniform Traffic Control Devices (MUTCD), the latest edition

### **SCOPE OF SERVICES**

The scope of services is categorized into three sections: Basic, Reimbursable, and Optional Services.

#### **A. Basic Services**

Masse Consulting will provide the following services:

##### **1. General Tasks (Optional Services)**

- **Project Validation:** for design parameter review
- **Public Involvement:** public outreach including meetings, brochures, boards, etc. as required by the County
- **Post Design Services:** include RFIs during bidding & Construction, Pre-Construction Meetings, Shop drawing reviews
- **Public Meeting Preparations:** assist the County with preparing flyers
- **Public Meeting Attendance:** attend one meeting, including preparing meeting minutes

##### **2. Roadway Analysis**

The specific tasks include:

- **Typical Section Package**
- **Horizontal/Vertical Master Design Files**
- **Computation Book and Quantities** (at design parameter review, 65%, 96%, 100%, and final submittals)
- **Cost Estimate** (at design parameter review, 65%, 96%, 100%, and final submittals)
- **Field Review:** This is limited to two field visits
- **Technical Meetings:** Two meetings with the County (at design parameter review and 65%)

**SCOPE OF SERVICES**  
Jupiter Farms Road, SIRWCD Canal 7 to SIRWCD Canal 6  
Palm Beach County Project No.: 2025902

---

---

**3. Roadway Plans**

The roadway construction plans with the aerial background will be prepared in compliance with the approved Typical Section and Master Plans. The plans will be prepared on 11"x 17" at a scale of 1"= 40' horizontally and 1"= 4' vertically. The set of plans will include:

- Key Sheet
- Typical Sections
- General Notes/Pay Item Notes/Summary of Quantities
- Master Plan
- Profile Sheet
- Plan Sheet
- Driveway Profiles
- Roadway Soil Survey Sheets
- Cross Sections

**4. Drainage Analysis**

This analysis involves designing systems for stormwater collection, treatment, and attenuation. The specific tasks include:

- Drainage Map Hydrology
- Determine Base Clearance Water Elevation: This covers the new roadway segment
- Design of Roadside Ditches: This includes the design of roadside swales
- Design of Storm Drains: This includes the design of pipe culverts under the driveways
- Drainage Design Report: This includes showing computations for water quality and attenuation requirements. The following storm events will be analyzed: 3yr-1day and 25yr-3day.

**5. Drainage Plans**

The specific tasks under the Drainage Plans are:

- Drainage Area Map
- Drainage Structure
- Miscellaneous Drainage Detail Sheets
- Lateral Ditch Profile (Swale)
- SWPPP Sheets

**6. Permits and Environmental**

Permits from the South Florida Water Management District (SFWMD) and the South Indian River Water Control District (SIRWCD) are required. The following services will be provided:

- Existing Permit Analysis
- Complete and submit all required permit applications: This includes SFWMD and SIRWCD permit applications, responses to requested additional information (RAI), and obtain permits.
- Technical Meetings

**7. Utilities**

Masse Consulting Services will assist the County in the utility coordination by providing utility coordination, preparing meeting minutes, and following up on action items. Masse Consulting will provide the following services:

- Develop Initial Utility Contact Plan: The project survey will be used for this task.

**SCOPE OF SERVICES**  
 Jupiter Farms Road, SIRWCD Canal 7 to SIRWCD Canal 6  
 Palm Beach County Project No.: 2025902

---

- Incorporate existing utility facilities
- Prepare utility conflict matrix
- Identify and incorporate conflict resolutions
- Attend two (2) meetings (at 65% and 100%)
- Utility Coordination directly with utilities agencies

**8. Signing and Pavement Marking Analysis**

The specific tasks include:

- Master Design Files
- Quantities
- Cost Estimate

**9. Signing and Pavement Marking Plans**

Plans will adhere to the Palm Beach County Typical Details for Pavement Markings, Signing & Geometrics (T-P-24) and include:

- Key sheet
- General Notes/Pay Item Notes/Summary of Quantities
- Plan Sheet

**B. Reimbursable Services**

**1. Reproduction and permit fees by Masse Consulting**

This includes reproduction costs (four sets in 11"x17" color) and permit fees (SFWMD and SIRWCD).

**2. Engineering Survey by Ritzel-Mason, Inc.**

See the attached scope of services from Ritzel-Mason, Inc.

**3. Geotechnical Services by Pacifica Engineering Services, LLC**

See attached scope of services from Pacifica Engineering Services, LLC.

**C. Optional Services**

**1. Post-Design Services by Masse Consulting**

Masse Consulting will provide post-design services during the construction phase, including responses to RFIs during the bid, shop drawing reviews, and clarification of plans.

**DELIVERABLES AND SUBMITTALS**

The submittal will include the project validation report at the design parameter review, plan submittals at 65%, 96%, 100%, and the final design phases. The cost estimate will be provided at 65%, 96%, 100%, and final submittals. The phase submittals will be provided in PDF format. The final signed and sealed construction plans (four sets in 11"x17" color) will be provided in both PDF (digitally signed and sealed) and hard copy formats.

**SCHEDULE**

Final construction plans are expected to be completed within 12 months from the Notice to Proceed (NTP). A tentative schedule is enclosed.

**SCOPE OF SERVICES**  
Jupiter Farms Road, SIRWCD Canal 7 to SIRWCD Canal 6  
Palm Beach County Project No.: 2025902

---

---

**EXCLUDED SERVICES**

- Traffic Control Plans (MOT)
- Utility Adjustment Plans
- ROW Acquisition Services
- Sidewalk Design
- Driveway Geometries (since the existing configuration will remain unchanged)

## PROJECT SCHEDULE

For

**Jupiter Farms Road, SIRWCD Canal 7 to SIRWCD Canal 6**

**PALM BEACH COUNTY PROJECT NO.: 2025902**

Notice to Proceed Date: 12/1/2025

ID	TASK NAME	START	END	DAYS
<b>1</b>	<b>Data Collection</b>			
1.1	Survey Data & Geotechnical Collection 1st Submittal	Mon 12/01/25	Wed 1/07/26	38
1.2	County review of Survey Data, 1st Review	Thu 1/08/26	Wed 1/28/26	21
1.3	Revise and Resubmit Survey Data 2nd Submittal	Thu 1/29/26	Thu 2/05/26	8
1.4	County review of Survey Data, 2nd Review	Fri 2/06/26	Thu 2/26/26	21
1.5	Survey Data Final Submittal	Fri 2/27/26	Mon 3/09/26	11
<b>2</b>	<b>Phase IA</b>			
2.1	Prepare Initial Utility Contact Plans	Fri 12/05/25	Tue 12/09/25	5
2.2	Distribution of Utility Plans & Recieve Markups	Thu 12/11/25	Thu 1/01/26	22
<b>3</b>	<b>PHASE IB-IC TYPICAL SECTION AND 35% SUBMITTAL</b>			
3.1	Prepare & Submit Typical Section and 35% Plans	Wed 1/07/26	Thu 2/05/26	30
3.2	County Review Typical Section and 35% Plans	Fri 2/06/26	Thu 2/26/26	21
<b>4</b>	<b>65% Plans Phase II</b>			
4.1	Prepare & Submit 65% Plans	Fri 2/27/26	Mon 4/13/26	46
4.2	County Review 65% Plans	Tue 4/14/26	Wed 5/06/26	23
4.3	Utility Coordination Meetings (1st Meeting)	Tue 5/12/26	Tue 5/12/26	1
4.4	Utility Pothole information provided by owners	Fri 5/15/26	Thu 6/25/26	42
4.5	Utility Coordination Meeting (2nd Meeting)	Tue 6/30/26	Tue 6/30/26	1
4.6	Prepare & Submit Permit Applications SFWMD and LWDD	Wed 7/01/26	Tue 7/14/26	14
<b>5</b>	<b>96% Plans Phase III</b>			
5.1	Prepare & Submit 96% Plans (w utility information)	Wed 7/15/26	Thu 8/27/26	44
5.2	County Review 96% Plans	Fri 8/28/26	Thu 9/17/26	21
5.3	Utility Coordination Meeting (Final Meeting)	Tue 9/22/26	Tue 9/22/26	1
<b>6</b>	<b>100% Plans Phase IV</b>			
6.1	Prepare/Submit 100% Plans	Wed 9/23/26	Thu 11/05/26	44
6.2	County Review 100% Plans	Fri 11/06/26	Thu 11/26/26	21
<b>7</b>	<b>Final/Construction Plans</b>			
7.1	Prepare & Submit Final/Construction Plans	Fri 11/27/26	Tue 12/22/26	26

Project Staff Hour Summary

Name of Project:		Jupiter Farms Road, SIRWCD Canal 7 to SIRWCD Canal 6					Consultant Name:		MASSE CONSULTING SERVICES, LLC	
PBC Project Number:		2025902					Consultant Number:		2025-109	
							Date:		2/6/2026	
Task Description	Total Staff Hours	Staff Categories					Staff Hours By Activity	Salary Cost By Activity	Average Rate Per Task	
		Principal Engineer \$85.00	Project Manager \$80.00	Senior Engineer \$70.00	Project Engineer \$56.00	Engineering Intern \$37.00				
<b>BASIC SERVICES</b>										
2	Roadway Analysis	80	8	12	20	24	16	80	\$4,976.00	\$62.20
3	Roadway Plans	264	26	40	66	79	53	264	\$16,415.00	\$62.18
4	Drainage Analysis	146	15	22	37	44	28	146	\$9,125.00	\$62.50
5	Drainage Plans	124	12	19	31	37	25	124	\$7,707.00	\$62.15
6	Permits & Environmental	124	12	19	31	37	25	124	\$7,707.00	\$62.15
7	Utilities	88	9	13	22	26	18	88	\$5,467.00	\$62.13
8	Signing and Pavement Marking Analysis	42	4	6	11	13	8	42	\$2,614.00	\$62.24
9	Signing and Pavement Marking Plans	23	2	3	6	7	5	23	\$1,407.00	\$61.17
<b>Total Staff Hours (Basic Services)</b>		<b>891</b>	<b>88</b>	<b>134</b>	<b>224</b>	<b>267</b>	<b>178</b>	<b>891</b>		<b>\$62.20</b>
<b>Total Staff Cost (Basic Services)</b>			<b>\$7,480.00</b>	<b>\$10,720.00</b>	<b>\$15,680.00</b>	<b>\$14,952.00</b>	<b>\$6,586.00</b>		<b>\$55,418.00</b>	
<b>OPTIONAL SERVICES</b>										
1	General Tasks	136	14	20	34	41	27	136	\$8,465.00	\$62.24
<b>Total Staff Hours (Optional Services)</b>		<b>136</b>	<b>14</b>	<b>20</b>	<b>34</b>	<b>41</b>	<b>27</b>	<b>136</b>		
<b>Total Staff Cost (Optional Services)</b>			<b>\$1,190.00</b>	<b>\$1,600.00</b>	<b>\$2,380.00</b>	<b>\$2,296.00</b>	<b>\$999.00</b>		<b>\$8,465.00</b>	

EBO SBE Calculation for this Fee Summary		SBE \$	Non-SBE \$
Prime-Masse Consulting Services, LLC		\$182,461.74	✓
Ritzel-Mason, Inc.		\$37,389.00	✓
Pacifica Engineering Services, LLC		\$12,615.35	✓
<b>Totals</b>		<b>\$232,466.09</b>	✓ <b>\$0.00</b>

SBE % Achieved	100.00%
SBE % Committed	94.00%

Basic Services:	
Salary Related Costs:	\$55,418.00
Contract Multiplier	2.78
Subtotal Basic Services (Masse Consulting Services, LLC):	\$154,062.04
<b>Basic Services Total:</b>	<b>\$154,062.04</b>

Reimbursables:	
Masse Consulting Services, LLC (Permits)	\$4,500.00
Masse Consulting Services, LLC (Reproduction/Prints)	\$367.00
Pacifica Engineering Services, LLC	\$12,615.35
Ritzel-Mason, Inc.	\$37,389.00
<b>Reimbursable Total:</b>	<b>\$54,871.35</b>

Optional Services:	
Masse Consulting Services, LLC (Unloaded)	\$8,465.00
Contract Multiplier	2.78
Masse Consulting Services, LLC (Loaded)	\$23,532.70
Ritzel-Mason, Inc.	\$0.00
Pacifica Engineering Services, LLC	\$0.00
<b>Optional Services Total:</b>	<b>\$23,532.70</b>

GRAND TOTAL ESTIMATED FEES: \$232,466.09

Project Activity 1: General Tasks						
Task No.	Task	Units	No of Units	Hours/ Unit	Total Hours	Comments
1.1	Project Validation	LS	1	40	40	To document the existing pavement conditions, drop-off hazards and pavement width in a report format (optional service)
1.2	Public Involvement	LS	1	40	40	Optional service-public outreach including meeting, brochures, boards, etc. as required by the County
1.3	Post Design Services	LS	1	40	40	Optional services including RFIs during bidding & Construction, Pre-Construction Meetings, Shop drawing reviews
1.4	Public Meeting Preparations	LS	1	12	12	Optional service-assist the County with preparing flyers
1.5	Public Meeting Attendance	EA	1	4	4	Optional service-attend one meeting, including preparing meeting minutes
<b>1. General Tasks Total</b>					<b>136</b>	

Project Activity 2: Roadway Analysis						
Task No.	Task	Units	No of Units	Hours/ Unit	Total Hours	Comments
2.1	Typical Section Package	EA	2	3	6	2 typical sections; 1-modification to the existing road typical section with proposed roadside swale between 150th Court N and Sandy Run, 1-new road segment between SIRWCD Canal 7 and 150th Court N
2.2	Horizontal /Vertical Master Design Files	LS	1	32	32	For horizontal/vertical master design files; 12 hrs initial setup + 20 hrs/road
2.5	Computation Book and Quantities	EA	5	2	10	Design parameter review, 65%, 96%, 100% and final submittals (5 submittals)
2.6	Cost Estimate	EA	5	2	10	Design parameter review, 65%, 96%, 100% and final submittals (5 submittals)
2.11	Field Review	EA	2	8	16	2 field visits, 2 persons (4 hours per visit, includes travel time)
2.12	Technical Meetings	EA	2	3	6	2 meetings with the County for design parameter review and 65%, including meeting preparation and meeting minutes (2 mtg x 2 persons x 1.5 hr per meeting with meeting preparation and meeting minutes)
<b>2. Roadway Analysis Total</b>					<b>80</b>	✓

Project Activity 3: Roadway Plans						
Task No.	Task	Units	No. of Units or Sheet	Hours/ Unit or Sheet	Total Hours	Comments
3.1	Key Sheet	Sheet	1	4	4	Cover sheet
3.2	Typical Sections	EA	2	2	4	2 typical sections; 1-modification to the existing road typical section with proposed roadside swale between 150th Court N and Sandy Run, 1-new road segment between SIRWCD Canal 7 and 150th Court N
3.4	General Notes/Pay Item Notes/Summary of Quantities	Sheet	2	4	8	2 sheets; General Notes (1 sheet), Pay Item Notes, and Summary of Quantities (1 sheet)
3.6	Master Plan	Sheet	5	6	30	
3.8	Profile Sheet	Sheet	5	8	40	5 roadway profile sheets
3.9	Plan Sheet	Sheet	5	8	40	5 roadway plan sheets
3.10	Driveway Profiles	EA	12	3	36	12 driveways
3.19	Cross Sections	EA	34	3	102	6 cross sections @ 50' spacing for new road section; 28 cross sections @ 100' spacing for existing road section
<b>3. Roadway Plans Total</b>					<b>264</b>	

Project Activity 4: Drainage Analysis						
Task No.	Task	Units	No of Units	Hours/ Unit	Total Hours	Comments
4.1	Drainage Map Hydrology	EA	2	10	20	For two drainage basins; review existing and proposed topography to check on existing and proposed drainage patterns
4.2	Determine Base Clearance Water Elevation	EA	1	10	10	Analyze water table impact to roadway base structure for new road segment
4.5	Design of Roadside Ditches	EA	2	12	24	For roadside swales for both sides of road
4.6	Design of Storm Drains	EA	26	2	52	MES (24) for pipe culvert under 12 driveways and outfalls to Canal 6 and 7 (2)
4.8	Drainage Design Report	LS	1	40	40	Drainage calculations and report
<b>4. Drainage Analysis Total</b>					<b>146</b>	

Project Activity 5: Drainage Plans						
Task No.	Task	Units	No. of Units or Sheet	Hours/ Unit or Sheet	Total Hours	Comments
5.1	Drainage Area Map	Sheet	1	8	8	Plan in 1:200 scale, no profile; 0.55 miles
5.3	Drainage Structure	EA	26	2	52	26 drainage structures
5.4	Miscellaneous Drainage Detail Sheets	Sheet	1	8	8	Outfall details, control structure
5.5	Lateral Ditch Profile (Swale)	EA	4	8	32	Swale profiles on both sides of roadway for existing and new roadway segment (4 swale profiles)
5.9	SWPPP Sheets	Sheet	6	4	24	Develop storm water pollution prevention plans
<b>5. Drainage Plans Total</b>					<b>124</b> ✓	

Project Activity 6: Permits and Environmental						
Task No.	Task	Units	No. of Units	Hours/ Units	Total Hours	Comments
6.3	Existing Permit Analysis	LS	1	32	32	Research and review existing permits (SFWMD, SIRWCD, and PBC Land Development)
6.4	Complete and Submit All Required Permit Applications	EA	2	40	80	SFWMD & SIRWCD, including RAIs
6,7	Technical Meetings	EA	3	4	12	3 meetings (1-SFWMD, 2-SIRWCD); 2 persons, 2 hrs/meeting, includes meeting preparation and meeting minutes
<b>6. Permits and Environmental Total</b>					<b>124</b>	

Project Activity 7: Utilities						
Task No.	Task	Units	No of Units	Hours/ Unit	Total Hours	Comments
7.1	Develop Initial Utility Contact Plan	EA	0	0	0	
7.2	Incorporate existing utility facilities	EA	6	4	24	Assume 6 utilities; Utilities identified by PBC in markup request letter + updating plans to show any relocations to be done prior to construction by facility owner. Assume multiple markups per utility Level D and B
7.3	Utility Conflict Matrix	EA	4	4	16	65%, 96%, 100% and final submittals
7.4	Identify and incorporate conflict resolutions	LS	1	8	8	Update conflict matrix with resolutions (for 2 meetings)
7.5	Meetings	EA	2	8	16	2 meetings (65%, and 100%), 2 persons; 4 hrs/meeting; includes meeting preparation, conduct meetings, and develop minutes (2x4)
7.6	Utility Coordination directly with utility agencies	EA	6	4	24	Coordinate with 6 agencies for utility markups for two submittals (during 65% and 96% plans); 2 hrs/submittal (2 x 2)
<b>7. Utilities Total</b>					<b>88</b>	

Project Activity 8: Signing & Marking Analysis						
Task No.	Task	Units	No. of Units	Hours/ Units	Total Hours	Comments
8.1	Master Design Files	LS	1	22	22	Establish sign and pavement marking master design file to include reference files of R/W, roadway, utilities files, etc.; 0.55 miles (40 hrs/mile)
8.2	Quantities	EA	4	3	12	65%, 96%, 100% and final submittals (4 submittals)
8.3	Cost Estimate	EA	4	2	8	65%, 96%, 100% and final submittals (4 submittals)
<b>8. Signing and Pavement Marking Analysis Total</b>					<b>42</b>	

Project Activity 9: Signing & Pavement Marking Plans						
Task No.	Task	Units	No of Units	Hours/ Unit	Total Hours	Comments
9.1	Key Sheet	Sheet	1	1	1	1 key sheet
9.2	General Notes/Pay Item Notes/Summary of Quantities	Sheet	1	2	2	Gebra notes and summary of quantity sheet
9.4	Plan Sheet	Sheet	5	4	20	Develop signing and pavement marking plans (5 sheets)
<b>9. Signing and Pavement Marking Plans Total</b>					<b>23</b>	

<b>REIMBURSABLE EXPENSES (REPRODUCTION COSTS)</b>					
Name of Project: Jupiter Farms Road, SIRWCD Canal 7 to SIRWCD Canal 6					
PBC Project Number: 2025902					
PLANS	No of Sets	Pages Per Set	Cost Per Page	Total Units	Comments
Permit Plans	0	0		\$ -	
35% Plans	0	0		\$ -	
65% Plans	0	0		\$ -	
96% Plans	0	0		\$ -	
100% Plans	0	0		\$ -	
Final Plans	4	50	\$ 1.40	\$280.00	Color Copies (11"x17")
Computation Book and Quantities	2	24	\$ 0.25	\$ 12.00	B&W Copies (8.5" x 11")
Drainage Report	2	150	\$ 0.25	\$ 75.00	B&W Copies (8.5" x 11")
<b>TOTAL</b>				<b>\$367.00</b>	

**REIMBURSABLE EXPENSES (PERMIT FEES)**

Name of Project: Jupiter Farms Road, SIRWCD Canal 7 to SIRWCD Canal 6

PBC Project Number: 2025902

Agency	Amount	Comments
South Florida Water Management District	\$ 2,000.00	See enclosed SFWMD permit application fee schedule
SIRWCD	\$ 2,500.00	Permit Modification (See enclosed SIRWCD Permit Fees); Inspection fee (3%) is not included as this will be paid by the applicant prior to construction
Total Fee =	\$ 4,500.00	✓

Greater than 300 mgm.	\$3,200
Noticed General Water Use Permit.	
Applications filed electronically at <a href="http://www.sfwmd.gov/ePermitting">www.sfwmd.gov/ePermitting</a> .	\$100
Application filed by other means.	\$350
Aquifer Storage and Recovery: cost added to the applicable use type listed above.	\$1,000
Permit Transfer to Another Entity Pursuant to Rules 40E-0.107 and 40E-2.351, F.A.C.	\$300
Letter Modification.	no fee
General Permit by Rule.	no fee

(2) Water Well Construction Permit Application processing fees are in the following table:

TABLE 40E-1.607(2)  
 PERMIT APPLICATION PROCESSING FEES FOR  
 WATER WELL CONSTRUCTION PERMIT APPLICATIONS  
 REVIEWED PURSUANT TO CHAPTER 40E-3, F.A.C.

Category	Amount
Water Well Construction.	\$100
Water Well Abandonment.	no fee

(3)(a) Environmental Resource Permit Application processing fees are in the following table:

TABLE 40E-1.607(3)(a)  
 PERMIT APPLICATION PROCESSING FEES FOR  
 ENVIRONMENTAL RESOURCE PERMIT APPLICATIONS  
 REVIEWED PURSUANT TO CHAPTER 62-330, F.A.C.

For the purposes of determining the applicable processing fee, "project area" means the total area wherein works occur as part of an activity requiring a permit under Chapter 373, Part IV, F.S., including all portions of the stormwater management system serving the project area.

1. Use of the reviewing agency's electronic self-certification system.	\$0
2. Verification of exemption under Section 373.406 or 403.813(1), F.S. or under Rules 62-330.050 through 62-33.051, F.A.C.	\$100
3. Verification of qualification to use a General Permit.	\$250
4. Individual or Conceptual Approval Permits, excluding Permits for a Mitigation Bank.	
a. New applications – the processing fee for a new permit application shall be as determined from the categories below:	
(I) Total project area of less than 10 acres and no activities in, on or over wetlands or other surface waters, except where exempt under paragraphs 62-330.051(9)(a) through (c), F.A.C.	\$2,000
(II) Project exceeds any of the thresholds in sub-sub-subparagraphs (3)(a)4.a.(I), above involves a total project area of less than 10 acres, less than 1 acre of works (i.e. dredging, filling, construction, or alteration) in, on or over wetlands and other surface waters, AND less than 10 new boat slips.	\$3,500
(III) Project exceeds any of the thresholds in sub-sub-subparagraph (3)(a)4.a.(II), above, but involves a total project area of less and 40 acres, less than 3 acres of works in, on or over wetlands and other surface waters, AND less than 30 new boat slips.	\$5,500
(IV) Project exceeds any of the thresholds in sub-sub-subparagraph (3)(a)4.a.(III), above, but involves a total project area of less than 100 acres, less than 10 acres of works in, on or over wetlands and other surface waters, AND less than 50 new boats ships.	\$7,500
(V) Project exceeds any of the thresholds in sub-sub-subparagraph (3)(a)4.a.(IV), above, but involves a total project area of less than 640 acres, AND less than 50 acres of works in, on or over wetlands and other surface waters.	\$13,125
(VI) Project exceeds any of the thresholds sub-sub-subparagraph (3)(a)4.a.(V), above.	\$25,000

(VII) Projects that are exclusively for agriculture or silviculture, and that involve a total project area of less than 10 acres AND less than 1 acre of works (i.e. dredging, filling, construction, or alternatiion) in, on or over wetlands and other surface waters.	\$859
(VIII) Projects that are exclusively for agriculture or silviculture, and that exceed any of the thresholds in sub-sub-subparagraph (3)(a)4.a.(VII), above, but involves a total project area of less than 40 acres AND less than 3 acres of works in, on or over wetlands and other surface waters.	\$2,444
(IX) Projects that are exclusively for agriculture or silviculture, and that exceed any of the thresholds in sub-sub- subparagraph (3)(a)4.a.(VIII), above, but involve a total project area of less than 100 acres AND less than 10 acres of works in, on or over wetlands and other surface waters.	\$4,029
(X) Projects that are exclusively for agriculture or silviculture, and that exceed any of the thresholds in sub-sub-subparagraph (3)(a)4.a.(IX), above, but involve a total project area of less than 640 acres AND less than 50 acres of works in, on or over wetlands and other surface waters.	\$5,284
(XI) Projects that are exclusively for agriculture or silviculture, and that exceed any of the thresholds in sub-sub-subparagraph (3)(a)4.a.(X), above.	\$6,605
(XII) Individual or Conceptual Permits solely for environmental restoration or enhancement activities, provided such activities are not associated with a mitigation bank and are not being implemented as mitigation for other activities that require a permit under Chapter 373, Part IV, F.S. For the purposes of this provision, the term "environmental restoration or enhancement" means an action or actions designed and implemented solely to convert degraded or altered uplands, wetlands, or other surface waters to intact communities typical of those historically present, or to improve the quality and condition of currently degraded wetlands or other surface waters to the more healthy, functional, and sustaining condition for fish, wildlife, and listed species.	\$250
(XIII) Individual or Conceptual Permit solely to retrofit an existing stormwater management system or systems to add treatment to and reduce stormwater pollutant loadings from the system or systems.	\$250
(XIV) An Individual Permit for a phase of construction that is consistent with an existing Conceptual Approval Permit.	\$1,500
<b>b. Major Modifications that exceed any of the thresholds in subsection 62-330.315(3), F.A.C.</b>	
(I) Major Modification to an Individual or Conceptual Approval Permit that increase the project area.	60% of fee for new permit for the same activity
(II) All other Major Modification.	60% of fee for new permit for the same activity
<b>c. Minor Modifications that do not exceed any of the thresholds in subsection 62-330.315(2), F.A.C.</b>	
(I) Time Extensions of Permits, where not exempt from fees under Florida Statutes.	\$500
(II) Minor Modifications to correct minor errors that do not involve technical review, to transfer ownership of a permit, or to transfer a permit from the construction to the operation phase.	\$0
(III) All other Minor Modifications.	\$250
<b>5. Individual or Conceptual Permits for a Mitigation Bank.</b>	
<b>a. New applications.</b>	
(I) For a Mitigation Bank with a permit area less than 100 acres.	\$7,500
(II) For a Mitigation Bank with a permit area greater than 100 acres but less than 640 acres.	\$13,125
(III) For a Mitigation Bank with a permit area of 640 acres or more.	
<b>b. Major Modifications involving changes to one or more of the following components: service area; credit assessment; success or release criteria; hydrologic structures or alterations; constructions or mitigation design that does not increase the project area; elimination of lands; or monitoring or management plans:</b>	\$25,000
(I) Affecting one of the above components.	20% of the fee under 5.a.
(II) Affective to of the above components.	40% of the fee under 5.a.
(III) Affective three of the above components.	60% of the fee under 5.a.

# Appendix F-1

## Permit Fee Schedule

### South Indian River Water Control District

**The Permit Will Not Be Issued Until Full Payment Is Received.  
All Fees Subject To Change Without Notice.**

#### Application Fees

All Permit applications shall be accompanied by a fee payable to the District in accordance with the schedule shown below. The District shall not commence processing any permit application until said fees are paid in full.

A) Minor activities involving a single-family lot up to 2.5 acres	\$250.00
B) All others:	\$500.00

#### Review Fees

All Permit Applicants shall submit a \$2,000 refundable initial deposit towards engineering and/or legal review and engineering inspection fees.

Permit review fees are based on actual engineering costs associated with the permit review process. If during the review process, the review fee exceeds \$2,000.00 prior to permit approval, an interim invoice will be issued to the permittee. For review fees less than \$2,000.00 an invoice for the actual cost of review will be sent prior to permit issuance.

When actual engineering and/or legal costs are less than the total fees received, the remaining balance will be returned to the Permittee either after the permit has been closed by the District or it is determined by the District that an expired permit shall not require additional inspections. Please allow 4 to 6 weeks from the time of closure for delivery of the check.

**There will be a \$250.00 administrative fee due for any permit requests submitted subsequent to the issuance of the permit plus any applicable review fees.**

#### Legal Fees

All legal fees incurred by the District in connection with the project being permitted will be invoiced in conjunction with review fees.

#### Inspection Fees

A minimum inspection fee of \$250.00 or 3% of the Engineer's Cost Estimate for construction, whichever is greater, will be invoiced and paid by the permittee prior to the commencement of construction. The permittee is required to submit a signed and sealed cost estimate from their Engineer of Record with the initial application submittal. The cost estimate is to be based on District permitted activities and affected facilities. This fee will cover the District's cost to inspect permitted activities, attend a kick-off meeting or other project meetings, a final inspection and deal with any other miscellaneous items that come up before the permit is closed.

When construction is completed and the permit has been closed by the District, all remaining inspection fees will be returned to the Permittee. Please allow 4 to 6 weeks from the time of closure for delivery of the check. If additional inspection fees or other fees related to the permit above \$250.00 or 3% of the cost of construction are incurred, the Permittee will be invoiced for the remaining balance and that balance must be paid prior to permit close out.

**Resubmittal and/or Modification Fee**

A resubmittal and/or modification fee (non-refundable) of \$250 shall apply.

Permit resubmittal and/or modification requests may require additional Engineering and/or Legal fee deposits.

Resubmittal and/or Modification fees shall be paid prior to the permit being issued.

**Permit Extension Fee**

A Permit extension fee (non-refundable) of \$250 shall apply to extend a permit completion past the original permit completion date. Permit extensions will be for an additional six (6) months and are subject to additional permit extension fees thereafter.

**Expired Permit Fee**

Permits that expire prior to the completion of construction or close out, shall be assessed an additional \$500 compliance fee, which shall be deducted from any remaining deposit or otherwise paid in full prior to permit closeout.

**Government Agencies**

All governmental agencies are exempt from the above permit fees.



February 5, 2026

Basher Khan, PE  
Masse Consulting Services, LLC  
2101 Vista Parkway, Suite 277  
West Palm Beach, Florida 33411

Ritzel-Mason, Inc.

5330 Van Buren Road  
Delray Beach, FL 33484

Phone: 786.472.0358

[www.ritzel-mason.com](http://www.ritzel-mason.com)

**Subject:** Fee Proposal for Surveying Services

**Project:** 2025902 – Jupiter Farms Road SIRWCD Canal 7 to SIRWCD Canal 6

Dear Mr. Khan:

Ritzel-Mason appreciates the opportunity to prepare this fee proposal for providing specific purpose / topographic services on the above referenced project. Ritzel-Mason is registered and licensed in the state of Florida. This letter will serve as our official scope of services and is accompanied by the included fee estimate. Ritzel-Mason has been requested by the Client to provide above ground topographic and right-of-way mapping services.

**Project Limits:** The limits of our project will include 3,080 feet along Jupiter Farms Road from SIRWCD Canal 7 to Sandy Run (155<sup>th</sup> Road North), right-of-way to right-of-way plus 25 feet, as shown in the attached exhibit.

**Scope of Reimbursable Services:** Ritzel-Mason proposed **Specific Purpose Survey / Topographic Survey** as described below:

Existing horizontal and vertical control will be recovered and/or set as needed. Control will be referenced to the Palm Beach County Control Network which is the NAD83/90 and NAVD88 datums. A closed level run will be performed through set control points.

Above ground data will be obtained to create a surface of the existing conditions. Topography will include visible fixed improvements such as bank lines, natural ground, curbing, asphalt, above ground utilities, medians, sidewalks, curb cuts, intersecting driveways, and aprons, etc. up to the right-of-way. Sufficient data will be obtained to create a DTM surface. Grade breaks will be included. The maximum interval between points on a straight line will be 50 feet and 25 feet on a curve.

Trees 4-inch DBH and greater will be located. Finish floor elevations out to 1<sup>st</sup> adjacent building will be shown. Maintained water elevation and edge of water for ponds are ditches are included.

2025902 Jupiter Farms Road

February 5, 2026



Horizontal control points associated with the baseline will be set at the beginning and end of each baseline and at PCs, PTs, PIs where applicable no more than 1000 feet apart. Alternate monumentation may be used for horizontal control in areas where the baseline is not feasible to occupy due to traffic conditions. Vertical control points will be set no more than 600 feet apart outside of the construction limits with stationing, offsets, elevations with state plane coordinates at each location relative to the baseline.

A Specific Purpose / Topographic Survey will be prepared and will meet and be certified to the applicable portions of the Standards of Practice as set forth in the Florida Board of Professional Surveyors and Mappers in rule 5J-17.050-0.52, Florida Administrative Code, pursuant to Chapter 472.027, Florida Statutes and this Appendix C and D of the Palm Beach County Roadway Design Procedures (January 2019), codes, rules and Statutes governing Surveying and Mapping. 11"x17" sheets at 1"=40' scale will be prepared.

Horizontal control points associated with the baseline will be set at the beginning and end of each baseline and at PCs, PTs, PIs where applicable no more than 600 feet apart. Alternate monumentation may be used for horizontal control in areas where the baseline is not feasible to occupy due to traffic conditions. Vertical control points will be set no more than 600 feet apart outside of the construction limits with stationing, offsets, elevations with state plane coordinates at each location relative to the baseline.

Ritzel-Mason proposes **Cross Sections** as described below:

- 100-foot interval cross sections will be shown on the survey, including any ditches and swales. In cases where a driveway or other relevant feature falls outside of the standard 100-foot interval, an additional cross section will be provided at that location to ensure all critical elevations and drainage impacts are properly documented.

Ritzel-Mason proposes **drainage services** as described below:

Ritzel-Mason will locate drainage features and pipes including invert elevations, top of structure elevations, bottom of structure elevations, pipe directions, pipe connectivity, pipe sizes and pipe materials. Upstream and downstream structures will be located.

Ritzel-Mason proposes **right-of-way and baseline services** as described below:

Ritzel-Mason will provide right-of-way and baseline on the project limits. If a historic baseline does not exist, one will be created (established from south to north and west to east). Information will be based on readily available data such as plats, deeds, and property appraiser website. Property lines will be shown. Field monumentation will be searched and located. Road R/W reports will be reviewed and processed, if provided by Palm Beach County. The baselines will be staked in the field. The County will be advised of any apparent missing right-of-way documentation or of any apparent gaps or overlaps in the right-of-way per the documents provided. State plane coordinates and ties to section corners or geodetic control points will be added at the beginning and ending of the baseline.

**Client Responsibilities:**

- Provide or facilitate access to project area for field investigations.

**Deliverables (Reimbursable Services):**

2025902 Jupiter Farms Road

February 5, 2026



A SURVEYING &amp; MAPPING FIRM

- DGN (SURVRD01.dgn) and PDF (digitally signed) of Specific Purpose/Topographic Survey, 11x17" sheets at 1"=40' scale
- Project Network Control Sheet and reference point sheets
- Digitally signed Specific Purpose/Topographic Survey
- DTM DGN and XML
- An ASCII file of points (x,y,z)

**Schedule for Reimbursable Services:**

We propose to mobilize for this work 10 business days from receipt of this proposal duly signed and barring weather and any unforeseen condition. The work will be submitted 28 business days from receipt of this proposal duly signed and barring weather and any unforeseen condition.

**Fees:** See attached spreadsheet.

**Basis:** The fees listed above are based on Ritzel-Mason's crews being able to work during the hours of 7:00am to 6:00pm and being granted access to the site. Ritzel-Mason is equipped to supply minor MOT services. *MOT services beyond the included minor MOT services are not anticipated.* Ritzel-Mason's field crews and equipment are not equipped or prepared to work in any area that possibly are, or may have been, contaminated with hazardous materials at any time.

Again, we appreciate the opportunity to provide our surveying services for Masse Consulting. Please call me directly at 786.472.0358, if you have any questions or comments. We look forward to beginning work on this project upon receiving your authorization to proceed.

Sincerely,

A handwritten signature in black ink that reads "Dennis Ritzel".

Dennis Ritzel, PSM  
Director of Business Operations  
786.472.0358  
Email: [dennis@ritzel-mason.com](mailto:dennis@ritzel-mason.com)

2025902 Jupiter Farms Road

February 5, 2026



**Exhibit**



Estimate of Work Effort and Cost

Name of Project:		Jupiter Farms Road, SIRWCD Canal 7 to SIRWCD Canal 6		Consultant Name:		Ritzel-Mason, Inc.				
PBC Project Number:		2025902		Consultant Number:		N/A				
				Date:		2/5/2026				
Task Description	Total Staff Hours	Reimbursable Services					Staff Hours By Activity	Salary Cost By Activity	Average Rate Per Task	
		Project Surveyor	Survey-CADD Technician	3 Man Crew SUE	3 Man Crew Survey	2 Man Crew Survey				
		\$50.00	\$33.00	\$73.50	\$66.75	\$55.00				
<b>REIMBURSABLE SERVICES (Ritzel-Mason, Inc.)</b>										
14.00	Survey - Field	106.00	6.00	0.00	0.00	100.00	0.00	106.00	\$ 6,975.00	\$ 65.80
15.00	Survey - Plans	156.00	20.00	136.00	0.00	0.00	0.00	156.00	\$ 5,488.00	\$ 35.18
<b>Total Staff Hours (Reimbursable Services)</b>		<b>262.00</b>	<b>26.00</b>	<b>136.00</b>	<b>0.00</b>	<b>100.00</b>	<b>0.00</b>	<b>262.00</b>		
<b>Total Staff Cost (Reimbursable Services)</b>			<b>\$1,300.00</b>	<b>\$4,488.00</b>	<b>\$0.00</b>	<b>\$6,675.00</b>	<b>\$0.00</b>		<b>\$12,463.00</b>	<b>\$47.57</b>
<b>Reimbursable Services:</b>										
								Reimbursable Services (Ritzel-Mason, Inc.)	\$12,463.00	
								<b>Raw Rate Reimbursable Services Total:</b>	<b>\$ 12,463.00</b>	
<b>Loaded Fees:</b>										
								Raw Rate Reimbursable Services Total:	12463.00	
								Multiplier Rate:	3.00	
								<b>Loaded Total:</b>	<b>\$ 37,389.00</b>	
								<b>Grand Total Estimated Fees (Ritzel-Mason, Inc.):</b>	<b>\$ 37,389.00</b>	

Project Activity 14: Survey - Field (Reimbursable Services)						
Task No.	Task	Units	No of Units	Hours/Unit	Total Hours	Comments
14.1	Horizontal Project Control (HPC)					
	2-Lane Roadway	LM	0.58	14.00	8	Establish horizontal control. Establish secondary control points. Redundant RTK VRS GPS. Datum will be NAD 83/90.
	Multi-lane Roadway	LM	0.00	0.00	0	
14.2	Vertical PC / Bench Line					
	2-Lane Roadway	LM	1.50	8.00	12	Verify vertical on PNC sheet control. Established vertical data on control. NAVD88.
	Multi-lane Roadway	LM	0.00	0.00	0	
14.3	Reference Points					
	2-Lane Roadway	EA	6.00	0.50	3	Set baseline reference points
	Multi-lane Roadway	EA	0.00	0.00	0	
14.4	Baseline Layout	LM	0.58	15.00	9	Establish baseline and rights-of-way on street and lands. The baselines will be staked in the field.
14.5	Section, Subdivision & Property Ties	EA	4.00	2.00	8	Locate centerlines and property corners
14.6	Topography/DTM (3D)	LM	0.58	69.00	40	Collect field topography (RW to RW plus 25 feet)
14.7	Cross Sections	EA	31.00	0.25	8	Perform 100 foot sections. 31 cross sections. *100-foot interval cross sections will be shown on the survey, including any ditches and swales. In cases where a driveway or other relevant feature falls outside of the standard 100-foot interval, an additional cross section will be provided at that location to ensure all critical elevations and drainage impacts are properly documented.
14.8	Side Street Surveys	LM	0.00	0.00	0	
14.9	SUE	EA	0.00	0.00	0	
14.10	Locates - Pothole	EA	0.00	2.00	0	
14.11	Outfall Survey	LM	0.00	0.00	0	
14.12	Drainage Survey	EA	8.00	0.75	6	Drainage structures
14.13	Bridge Survey	EA	0.00	0.00	0	
14.14	Canal Survey	LM	0.00	0.00	0	
14.15	Channel Survey and Soundings	LS	0.00	0.00	0	
14.16	Pond Site Survey	EA	0.00	0.00	0	

Task No.	Task	Units	No of Units	Hours/Unit	Total Hours	Comments
14.17	Jurisdictional Line Survey	LS	0.00	0.00	0	
14.18	Tree Survey	EA	100.00	0.10	10	Locate 4-inch and greater trees
14.19	Route/Corridor Survey	LM	0.00	0.00	0	
14.20	Boundary Survey	LS	0.00	0.00	0	
14.21	Topographic Survey	LS	0.00	0.00	0	
14.22	Specific Purpose Survey	LS	0.00	0.00	0	
14.23	Hydrographic Survey	LS	0.00	0.00	0	
14.24	Quantity Survey	LS	0.00	0.00	0	
14.25	Record/As-Built Survey	LS	0.00	0.00	0	
14.26	R/W Staking					
	Parcel	EA	0.00	0.00	0	
	R/W Line	LM	0.00	0.00	0	
14.27	Meetings	EA	1.00	2.00	2	Kick off meeting
<b>14. Survey - Field Total</b>					<b>106</b>	

Project Activity 15: Survey Plans (Reimbursable Services)						
Task No.	Task	Units	No. of Units	Hours/ Unit or Sheet	Total Hours	Comments
15.1	Alignment	EA	1.00	10.00	10	<i>Establish baseline and rights-of-way on street and lands.</i>
15.2	Section and 1/4 Section Lines	EA	1.00	4.00	4	<i>Search and process section corners.</i>
15.3	Subdivisions / Property Lines	EA	1.00	4.00	4	<i>Search and process property corners.</i>
15.4	Existing R/W	EA	1.00	8.00	8	<i>Establish existing right-of-way on street and lands</i>
15.5	Topography	LM	0.58	57.00	33	<i>Process topography and cross sections</i>
15.6	Parent Tract Properties/Existing Easements	EA	0.00	0.00	0	
15.7	Title Review	LS	1.00	4.00	4	<i>Road RW report review</i>
15.8	Jurisdictional/Agency Lines	LM	1.00	0.00	0	
15.9	Survey Key Sheet	Sheet	1.00	10.00	10	
15.10	Survey Detail & Legend Sheet	Sheet	1.00	13.00	13	
15.11	Reference Point Sheet	Sheet	0.00	0.00	0	
15.12	Project Control Sheet	Sheet	2.00	10.00	20	<i>Prepare PNC Sheets</i>
15.13	Specific Purpose & Topographic Survey	Sheet	5.00	10.00	50	<i>Prepare Specific Purpose &amp; Topographic Survey</i>
15.14	Boundary Survey	EA	0.00	0.00	0	
15.15	Technical Meetings	EA	0.00	4.00	0	
<b>15. Survey Plans Total</b>					<b>156</b>	



February 5, 2026

**Masse Consulting Services, LLC**  
2101 Vista Parkway, Suite 277  
West Palm Beach, FL 33411

Attention: Mr. Basher Khan, P.E.

Re: Scope of Services for Geotechnical Engineering Services  
**Jupiter Farm Road, SIRWCD Canal 7 to SIRWCD Canal 6**  
Jupiter Farms Road, between 155<sup>th</sup> Road and 150<sup>th</sup> Court  
Jupiter, Florida 33478  
PBC Project No.: 2025902  
PACIFICA Proposal No.: 610-120112604

---

Dear Mr. Khan,

In accordance with your email and the survey provided, **Pacifica Engineering Services, LLC (PACIFICA)**, is pleased to submit this scope of services to perform a subsurface exploration program for the above-referenced project. Included herein is our understanding of the proposed development along with a scope of services, cost estimates, and anticipated schedules.

It is understood that plans for this project consist of roadway improvements along Jupiter Farms Road between 155<sup>th</sup> Road N and 150<sup>th</sup> Court N in Jupiter, Florida.

**GEOTECHNICAL SCOPE OF SERVICES**

Based on the requested scope, PACIFICA proposes to perform the following geotechnical field services:

**Basic Services**

- fourteen (14) Standard Penetration Test (SPT) borings to a depth of 10 feet below existing grades.

The SPT borings will be performed with truck-mounted machinery using rotary drilling procedures. Samples of the in-place materials will be recovered with a standard split barrel driven with a 140-pound hammer falling 30 inches (the Standard Penetration Test in accordance with ASTM D1586). After completion of drilling, all boreholes will be grouted and the site generally cleaned, as required.

Underground utility clearance will be required prior to the commencement of the geotechnical field exploration. Therefore, PACIFICA will contact "Sunshine One-Call" Service to obtain underground public utility clearance. PACIFICA understands that private utilities will be marked by others prior to each mobilization.

Due to the boring locations being in or in close proximity to the roadway, Maintenance of Traffic (MOT) will be needed to perform the geotechnical scope of work. If required, PACIFICA will submit MOT plans with an estimated schedule in accordance with FDOT standards for **PBC** approval prior to the start of fieldwork. PACIFICA will use FDOT Maintenance of Traffic (MOT) Plans Design

---

Standards Index Series 600 when developing MOT plans.

**GEOTECHNICAL REPORT DELIVERABLES**

After the geotechnical field exploration is completed, a geotechnical engineer will review the soil samples and select samples will be tested for physical properties such as gradation, moisture content and organic content, if deemed necessary. The results of the geotechnical exploration will be transmitted in a report which will specifically contain the information listed below:

1. a location plan of the site showing the location of the soil borings;
2. logs of the exploratory borings, which furnish the results of the borings and SPT sampling;
3. the existence of organic soils or any other soil conditions;
4. groundwater readings during the time of the field exploration;
5. on-site soil suitability; and
6. recommendations for the preparation of the subgrade and paving recommendations.

**GEOTECHNICAL SCHEDULE**

Our study can begin one day after we receive authorization to proceed. We will start drilling after public underground utilities have been located and identified, which may take 2-4 business days. The geotechnical field exploration should be completed within 2 business days. Laboratory testing should be completed within one week following final field demobilization. The written report of the subsurface exploration will be available within two weeks following the completion of final laboratory testing. We estimate that our study will be completed within 4 weeks of your notice to proceed.



COST BREAKDOWN				
05-Feb-26				
DESCRIPTION	UNIT	# OF UNITS	UNIT RATE	TOTAL
<b>I. FIELD EXPLORATIONS</b>				
Mobilization of Drill Equipment (50-mile travel)	each	1.0	\$420.00	\$420.00
Engineering Technician (Site Reconnaissance, Boring Layout and Underground Utility Clearance) (Raw Rate: \$34.00*2.94)	hour	5.0	\$99.96	\$499.80
Standard Penetration Tests - Truck Rig (0' - 50')	feet	140.0	\$16.00	\$2,240.00
Grout Bore Hole (0 to 50 Feet)	feet	140.0	\$6.40	\$896.00
<b>II. SOIL &amp; AGGREGATE TESTING</b>				
Organic Content Test	each	4.0	\$55.00	\$220.00
Natural Sample Moisture Content	each	4.0	\$20.00	\$80.00
Grain size determination: Full grain size (8 sieves)	each	4.0	\$78.00	\$312.00
Grain size determination: Wash through (#200)	each	4.0	\$60.00	\$240.00
<b>III. ENGINEERING SERVICES (MULTIPLIER: 2.94)</b>				
Principal Engineer, P.E. (Raw Rate: \$84.10*2.94)	hour	1.0	\$247.25	\$247.25
Senior Geotechnical Engineer (Raw Rate: \$69.30*2.94)	hour	10.0	\$203.74	\$2,037.40
Drafter / CADD (Raw Rate: \$31.35*2.94)	hour	6.0	\$92.17	\$553.02
<b>IV. REIMBURSABLES</b>				
Ground Penetration Radar (GPR)	day	1.0	\$1,500.00	\$1,500.00
Maintenance of Traffic (MOT) including MOT Plan	day	1.0	\$1,450.00	\$1,450.00
MOT Plan and MOT Permitting	hour	4.0	\$180.00	\$720.00
Advance MOT Technician	hour	12.0	\$99.99	\$1,199.88
<b>ESTIMATED GEOTECHNICAL BASIC FEE FOR THE INTERSECTION IMPROVEMENT SERVICES</b>				<b>\$12,615.35</b>

# Jupiter Farms Road, SIRWCD Canal 7

Proposed Boring Location Map

EXHIBIT B-Page 28 of 28

Legend  
● Proposed SPT Boring @ 10 FT



**OSBD SCHEDULE 1\***

SOLICITATION/PROJECT/BID NAME: Jupiter Farms Road, SIRWCD Canal 7 to SIRWCD Canal 6 SOLICITATION/PROJECT/BID NO.: 2025902  
 SOLICITATION OPENING/SUBMITTAL DATE: May 14, 2024 COUNTY DEPARTMENT: Engineering & Public Works Department

**Section A** PLEASE LIST THE DOLLAR AMOUNT OR PERCENTAGE OF WORK TO BE COMPLETED BY THE PRIME CONTRACTOR/CONSULTANT\* ON THE PROJECT:

NAME OF PRIME RESPONDENT/BIDDER: Masse Consulting Services, LLC ADDRESS: 1132 Cala Lily Cv., West Palm Beach, FL 33415  
 CONTACT PERSON: Md Abul Basher Khan PHONE NO.: 561-568-3197 E-MAIL: bkhan@masseconsultingfirm.com  
 PRIME'S DOLLAR AMOUNT OR PERCENTAGE OF WORK: \$182,461.74  
 SBE Prime's must include their percentage or dollar amount in the Total Participation line under section B.  Non-SBE  SBE

**Section B** PLEASE LIST THE DOLLAR AMOUNT OR PERCENTAGE OF WORK TO BE COMPLETED BY ALL SUBCONTRACTORS/SUBCONSULTANTS ON THE PROJECT BELOW:

Subcontractor/Sub consultant Name	(Check all Applicable Categories)		DOLLAR AMOUNT OR PERCENTAGE OF WORK
	Non-SBE	SBE	
1. Pacifica Engineering Services, LLC	<input type="checkbox"/>	<input checked="" type="checkbox"/>	\$12,615.35
2. Ritzel-Mason, Inc.	<input type="checkbox"/>	<input checked="" type="checkbox"/>	\$37,389.00
3.	<input type="checkbox"/>	<input type="checkbox"/>	
4.	<input type="checkbox"/>	<input type="checkbox"/>	
5.	<input type="checkbox"/>	<input type="checkbox"/>	

(Please use additional sheets if necessary)

Total Bid/Offer Price \$ \$232,466.09 Total \$50,004.35  
 Total Certified SBE Participation \$ \$232,466.09/100.00%

I hereby certify that the above information is accurate to the best of my knowledge: Md Abul Basher Khan Basher Khan Manager  
 Name & Authorized Signature Title

- Note:**
- The amount listed on this form for a Subcontractor/sub consultant must be supported by price or percentage listed on the properly executed Schedule 2 or attached signed proposal.
  - Only those firms certified by Palm Beach County at the time of solicitation due date are eligible to meet the established OSBD Affirmative Procurement Initiative (API). Please
  - Modification of this form is not permitted and will be rejected upon submittal.
  - If a Mandatory API goal applies, failure to submit a properly executed Schedule 2 will result in a determination of non-responsiveness to the solicitation.

\*Revised 6.5.2025 pursuant to Emergency Ordinance 2025-014, approved on June 3, 2025

**A completed Schedule 2 is a binding document between the Prime Contractor/consultant and a Subcontractor/subconsultant (for any tier) and should be treated as such.** All Subcontractors/subconsultants, including any tiered Subcontractors/subconsultants, must properly execute this document. If a Mandatory API goal applies, failure to submit a properly executed Schedule 2 will result in a determination of non-responsiveness to the solicitation. Each properly executed Schedule 2 must be submitted with the bid/proposal.

SOLICITATION/PROJECT NUMBER: 2025902

SOLICITATION/PROJECT NAME: Jupiter Farms Road, SIRWCD Canal 7 to SIRWCD Canal 6

Prime Contractor: Masse Consulting Services, LLC Subcontractor: N/A

**(Check box(s) that apply)**

SBE  Non-SBE  Supplier

Date of Palm Beach County Certification (if applicable): 3/11/24 to 3/10/27

**SBE PARTICIPATION – SBE Primes must document all work to be performed by their own work force on this form.** Specify in detail, the scope of work to be performed or items supplied with the dollar amount and/or percentage for each work item. When applicable, identify the line item(s) associated with the service/product being supplied. SBE credit will only be given for the areas in which the SBE is certified. A detailed quote/proposal may be attached to a properly executed Schedule 2 for additional information.

Line Item	Item Description	Unit Price	Quantity/ Units	Contingencies/ Allowances	Total Price/Percentage
	General Highway Design w/Curb & Gutter, Access & Drainage				\$182,461.74

The undersigned Subcontractor/subconsultant is prepared to self-perform the above-described work in conjunction with the aforementioned project at the following total price or percentage: \$182,461.74

If the undersigned intends to subcontract any portion of this work to another Subcontractor/subconsultant, please list the business name and the amount below accompanied by a separate properly executed Schedule 2.

N/A Price or Percentage: N/A  
 Name of 2<sup>nd</sup>/3<sup>rd</sup> tier Subcontractor/subconsultant

Masse Consulting Services, LLC

Print Name of Prime

By: *Basher Khan*  
 Authorized Signature

Md Abul Basher Khan

Print Name

Manager

Title

Date: 2/11/2026

N/A

Print Name of Subcontractor/subconsultant

By: \_\_\_\_\_  
 Authorized Signature

Print Name

Title

Date: \_\_\_\_\_

\*Revised 6.5.2025 pursuant to Emergency Ordinance 2025-014, approved on June 3, 2025

**A completed Schedule 2 is a binding document between the Prime Contractor/consultant and a Subcontractor/subconsultant (for any tier) and should be treated as such.** All Subcontractors/subconsultants, including any tiered Subcontractors/subconsultants, must properly execute this document. If a Mandatory API goal applies, failure to submit a properly executed Schedule 2 will result in a determination of non-responsiveness to the solicitation. Each properly executed Schedule 2 must be submitted with the bid/proposal.

SOLICITATION/PROJECT NUMBER: 2025902

SOLICITATION/PROJECT NAME: Jupiter Farms Road, SIRWCD Canal 7 to SIRWCD Canal 6

Prime Contractor: Masse Consulting Services, LLC Subcontractor: Pacifica Engineering Services, LLC

**(Check box(s) that apply)**

SBE  Non-SBE  Supplier

Date of Palm Beach County Certification (if applicable): 10/25/24 to 10/24/27

**SBE PARTICIPATION – SBE Primes must document all work to be performed by their own work force on this form.** Specify in detail, the scope of work to be performed or items supplied with the dollar amount and/or percentage for each work item. When applicable, identify the line item(s) associated with the service/product being supplied. SBE credit will only be given for the areas in which the SBE is certified. A detailed quote/proposal may be attached to a properly executed Schedule 2 for additional information.

Line Item	Item Description	Unit Price	Quantity/ Units	Contingencies/ Allowances	Total Price/Percentage
	Geotechnical Exploration				\$12,615.35

The undersigned Subcontractor/subconsultant is prepared to self-perform the above-described work in conjunction with the aforementioned project at the following total price or percentage: \$12,615.35

If the undersigned intends to subcontract any portion of this work to another Subcontractor/subconsultant, please list the business name and the amount below accompanied by a separate properly executed Schedule 2.

N/A Price or Percentage: N/A  
 Name of 2<sup>nd</sup>/3<sup>rd</sup> tier Subcontractor/subconsultant

Masse Consulting Services, LLC

Print Name of Prime

By: *Md Abul Basher Khan*  
 Authorized Signature

Md Abul Basher Khan

Print Name

Manager

Title

Date: 2/10/2026

Pacifica Engineering Services, LLC

Print Name of Subcontractor/subconsultant

By: *Wasley Foster*  
 Authorized Signature

Wasley Foster

Print Name

President

Title

Date: 02/10/2026

\*Revised 6.5.2025 pursuant to Emergency Ordinance 2025-014, approved on June 3, 2025

A completed Schedule 2 is a binding document between the Prime Contractor/consultant and a Subcontractor/subconsultant (for any tier) and should be treated as such. All Subcontractors/subconsultants, including any tiered Subcontractors/subconsultants, must properly execute this document. If a Mandatory API goal applies, failure to submit a properly executed Schedule 2 will result in a determination of non-responsiveness to the solicitation. Each properly executed Schedule 2 must be submitted with the bid/proposal.

SOLICITATION/PROJECT NUMBER: 2025902

SOLICITATION/PROJECT NAME: Jupiter Farms Road, SIRWCD Canal 7 to SIRWCD Canal 6

Prime Contractor: Masse Consulting Services, LLC Subcontractor: Ritzel-Mason, Inc.

(Check box(s) that apply)

SBE  Non-SBE  Supplier

Date of Palm Beach County Certification (if applicable): 4/10/25 to 4/9/28

**SBE PARTICIPATION** – SBE Primes must document all work to be performed by their own work force on this form. Specify in detail, the scope of work to be performed or items supplied with the dollar amount and/or percentage for each work item. When applicable, identify the line item(s) associated with the service/product being supplied. SBE credit will only be given for the areas in which the SBE is certified. A detailed quote/proposal may be attached to a properly executed Schedule 2 for additional information.

Line Item	Item Description	Unit Price	Quantity/ Units	Contingencies/ Allowances	Total Price/Percentage
	Engineering Surveying				\$37,389.00

The undersigned Subcontractor/subconsultant is prepared to self-perform the above-described work in conjunction with the aforementioned project at the following total price or percentage: \$37,389.00

If the undersigned intends to subcontract any portion of this work to another Subcontractor/subconsultant, please list the business name and the amount below accompanied by a separate properly executed Schedule 2.

N/A  
Name of 2<sup>nd</sup>/3<sup>rd</sup> tier Subcontractor/subconsultant

Price or Percentage: N/A

Masse Consulting Services, LLC

Print Name of Prime

By: Basher Khan  
Authorized Signature

Md Abul Basher Khan

Print Name

Manager

Title

Date: 2/10/2026

Ritzel-Mason, Inc.

Print Name of Subcontractor/subconsultant

By: Dennis Ritzel  
Authorized Signature

Dennis Ritzel

Print Name

Vice President

Title

Date: 2/10/2026

\*Revised 6.5.2025 pursuant to Emergency Ordinance 2025-014, approved on June 3, 2025





**Palm Beach County  
Compliance Summary Report**

Vendor Number	Vendor Name	AM Best Rating	Insurance Carrier	Policy #	Eff. Date	Exp. Date	Coverage	Contract Number	Contract Name
DX00003075	Masse Consulting Services, LLC		Compliant					2024055	Civil Engineering Professional Continuing Services Contract
		A+p , XV	Hartford Casualty Insurance Company	21SBBZ1G6Y	2/10/2026	2/10/2027	General Liability		
		Ag , XV	Beazley Insurance Company, Inc.	C36A7E250201	2/17/2026	2/17/2027	Professional Liability		
		A+p , XV	Hartford Casualty Insurance Company	21WECBZ1GDB	2/10/2026	2/10/2027	Workers Comp		

**Risk Profile :** Standard - Professional Services  
**Required Additional Insured :** Palm Beach County Board of County Commissioners  
**Ownership Entity :**