

**PALM BEACH COUNTY
BOARD OF COUNTY COMMISSIONERS**

WORKSHOP SUMMARY

Meeting Date: June 16, 2026

Submitted By: Administration
Submitted For: Community Services

I. EXECUTIVE BRIEF

Title: Homeless Services Non-Profit Providers

Summary: This workshop will provide the Board of County Commissioners (BCC) with an overview of Palm Beach County's (County) homeless response system, including the County's role as the Continuum of Care (CoC) Lead Agency, HMIS Lead Agency, and Collaborative Applicant. The workshop will also provide context for how nonprofit providers operate within the broader homeless services system and how County policy, planning, funding, data, and community partnerships work together to support residents experiencing homelessness.

Palm Beach County's homeless response system relies on coordination among the BCC, Homeless and Housing Alliance (HHA), Homeless Coalition (HC), Homeless Advisory Board (HAB), County staff, nonprofit providers, housing partners, and other community stakeholders. As the CoC Lead Agency, the County coordinates system planning, Coordinated Entry, housing access, supportive service referrals, homeless data management, provider monitoring, and eligibility coordination. The County does not directly provide every service; it works to ensure the homeless response system functions as an integrated network focused on connecting individuals and families to housing and supportive services. Countywide (RS)

Background and Policy Issues: Homelessness remains a complex countywide issue that requires coordinated planning, funding, data management, service delivery, housing access, and community partnerships. The County serves as the CoC Lead Agency, HMIS Lead Agency, and Collaborative Applicant, helping to coordinate the homeless response system, manage Coordinated Entry and HMIS, support federal funding efforts, and monitor system performance.

This workshop will provide the BCC with a system-level overview of the County's homeless response structure, the role of nonprofit providers, and current policy considerations impacting homeless services. The discussion will also help inform future planning related to housing access, service coordination, funding alignment, and efforts to reduce unsheltered homelessness.

Attachment:

- 1. Palm Beach County Homeless Response System Presentation

Recommended By:   6/9/2026
Department Director Date

Approved By:  6/12/26
Deputy County Administrator Date

II. FISCAL IMPACT ANALYSIS

A. Five Year Summary of Fiscal Impact:

Fiscal Years	2026	2027	2028	2029	2030
Capital Expenditures					
Operating Costs					
External Revenue					
Program Income (County)					
In-Kind Match (County)					
NET FISCAL IMPACT					

No. ADDITIONAL FTE POSITIONS (Cumulative)					
---	--	--	--	--	--

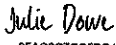
Is Item Included In Current Budget? Yes No
 Does this item include the use of federal funds? Yes No
 Does this item include the use of state funds? Yes No

Budget Account No.:
 Fund ___ Dept. ___ Unit ___ Object ___ Program Code ___ Program Period ___

B. Recommended Sources of Funds/Summary of Fiscal Impact:

There is no fiscal impact to this item.

C. Departmental Fiscal Review:

DocuSigned by:

05AC8C7CC5BC444

Julie Dowe, Director, Financial & Support Services

III. REVIEW COMMENTS

A. OFMB Fiscal and/or Contract Development and Control Comments:

	6/10/26	
OFMB	MA 6/10	Contract Development and Control

B. Legal Sufficiency:

 6/10/26
 Assistant County Attorney

C. Other Department Review:

 Department Director

This summary is not to be used as a basis for payment.



Palm Beach County
Board of County Commissioners



Palm Beach County
**COMMUNITY
SERVICES**

Helping People Build Better Communities



Palm Beach County

Palm Beach County's Homeless and Housing Alliance System of Care (Collaboration with Nonprofit Partners)

June 16, 2026

Board of County Commissioners Workshop



THE
**LORD'S
PLACE**
Breaking the Cycle
of Homelessness


ADOPT-A-FAMILY
OF THE PALM BEACHES

**VITA
NOVA**
New Life for Homeless Youth



**Homeless
Coalition**
PALM BEACH COUNTY



INTEGRATED CROSS-SECTOR CoC MODEL

ONE SYSTEM. STRONGER TOGETHER.

Building an integrated ecosystem to prevent and end homelessness and promote housing stability for all.



SHARED OUTCOMES



Prevent Homelessness



Reduce Homelessness



Increase Housing Stability



Improve Health & Well-Being

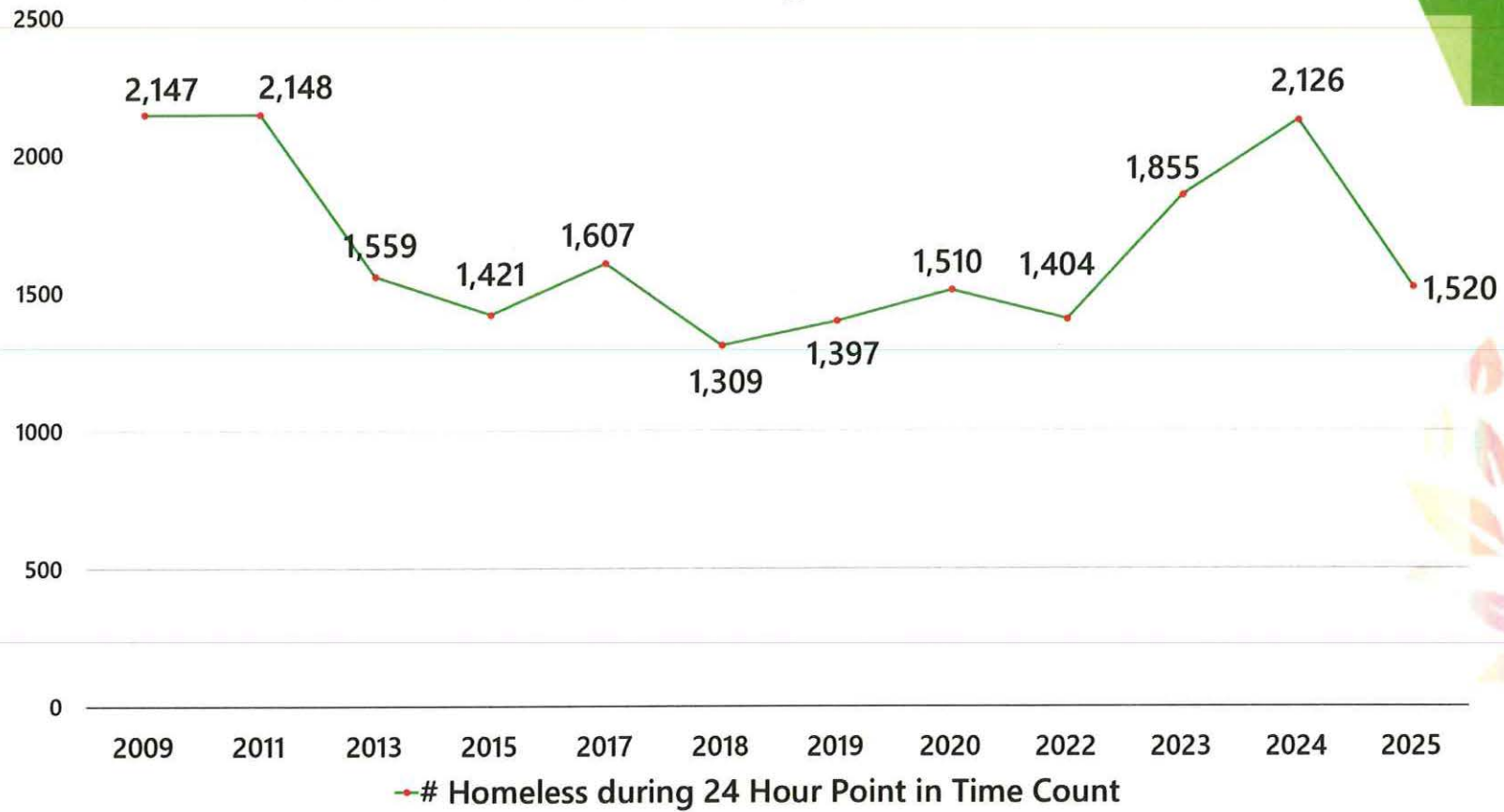


Strengthen Economic Self-Sufficiency

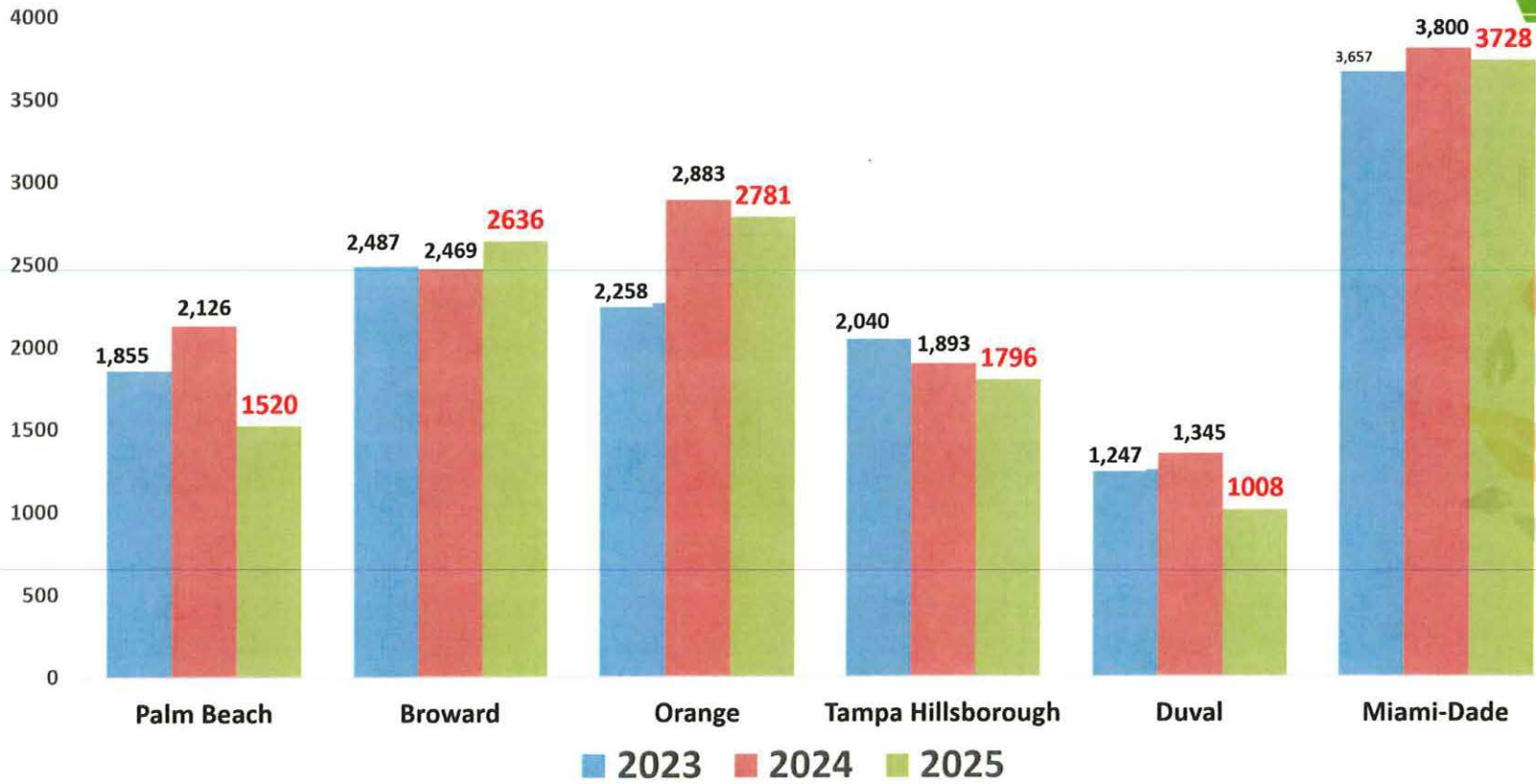


Build Safer, More Vibrant Communities

Number of Homeless during 24 Hour Point in Time Count



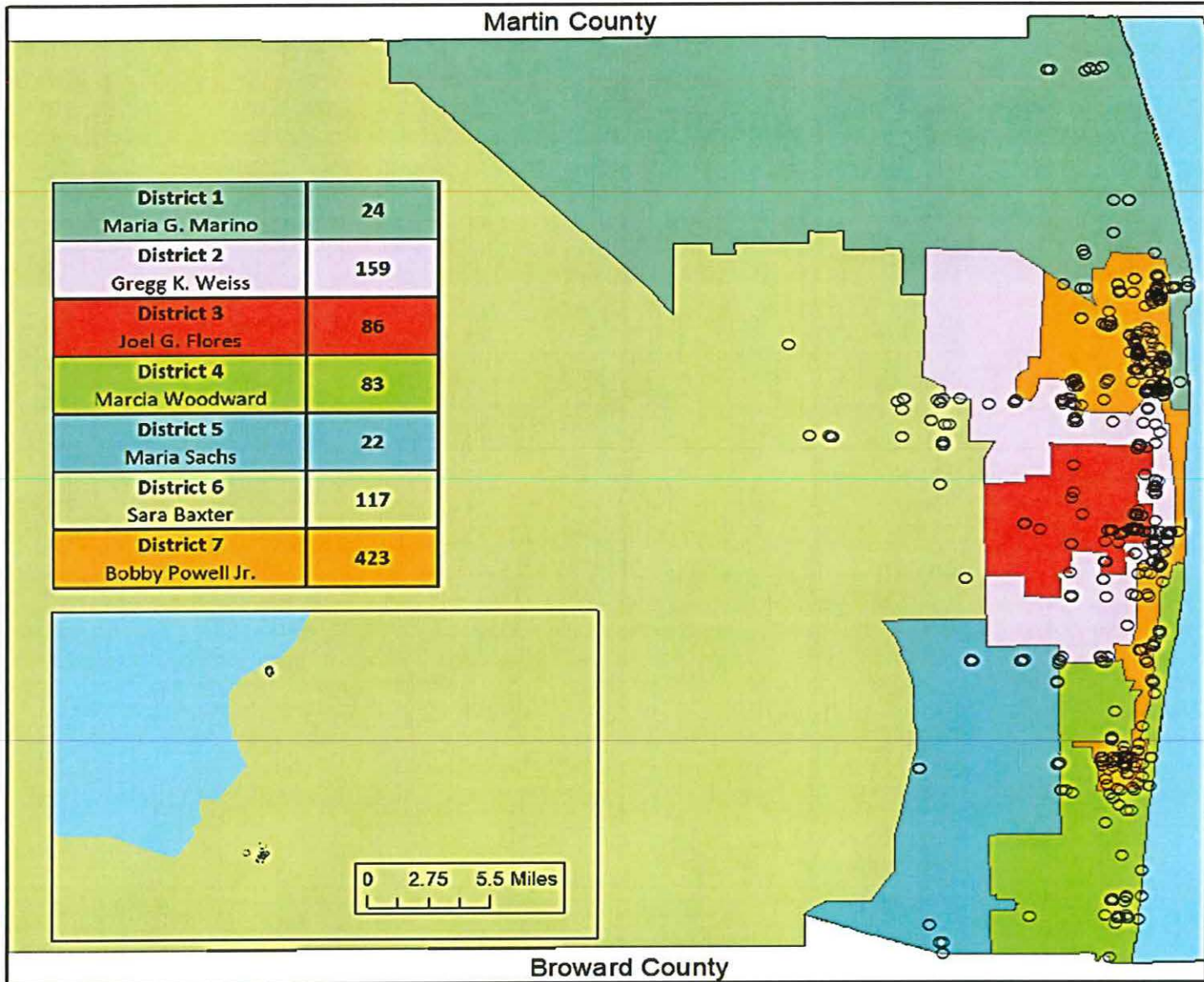
POINT IN TIME (PIT) COUNTS FOR OTHER FLORIDA COUNTIES



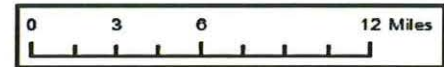
HHA
Palm Beach County



**Palm Beach County
2025 Point-In-Time Unsheltered Count**



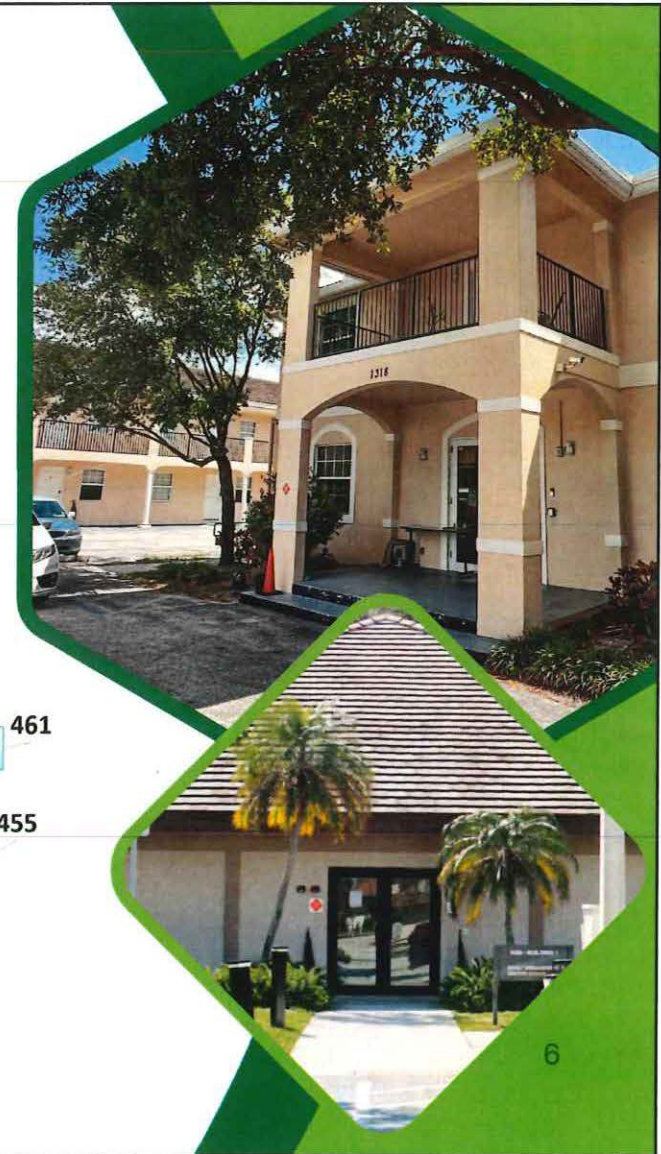
Cartographer Name: David Tedesco, IMS II, Palm Beach County Community Services Department
Date Map Created: February 25, 2025
Map Data Collected On: January 30-31, 2025
Data Source: Human Resources Division, CSD, Point-In-Time Data (collected through ESRI Survey123)



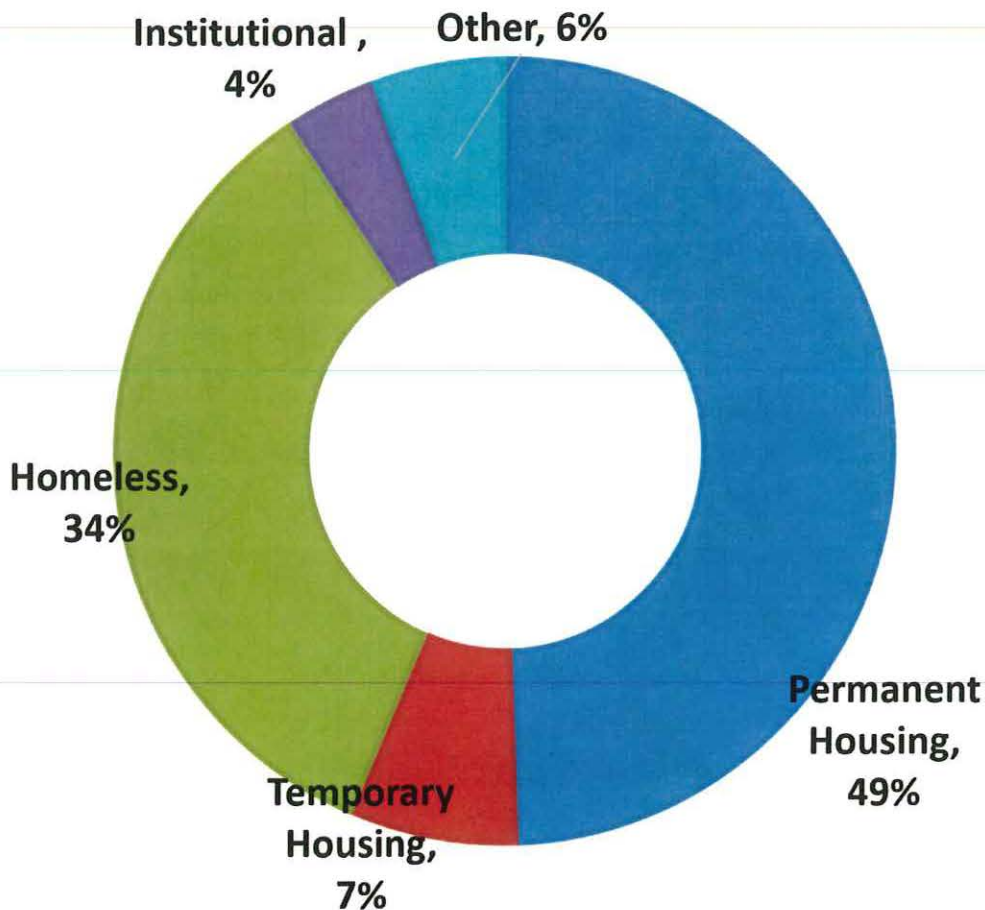
Palm Beach County's Emergency Shelter Total Persons Served

Total Served = 1,676

**Melissa's Place and Program REACH units were periodically under construction throughout fiscal year 2025*



Emergency Shelter Exit Destinations

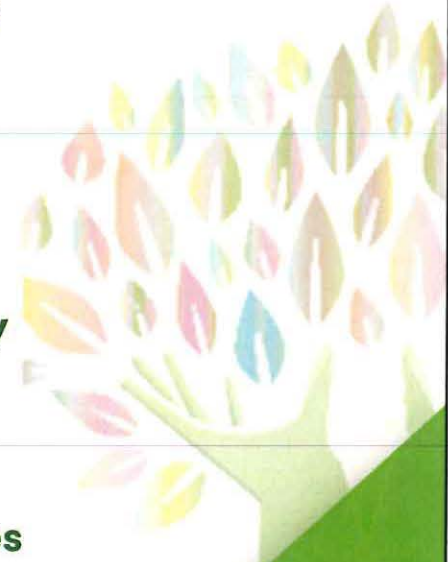


- **Emergency Shelters include:**

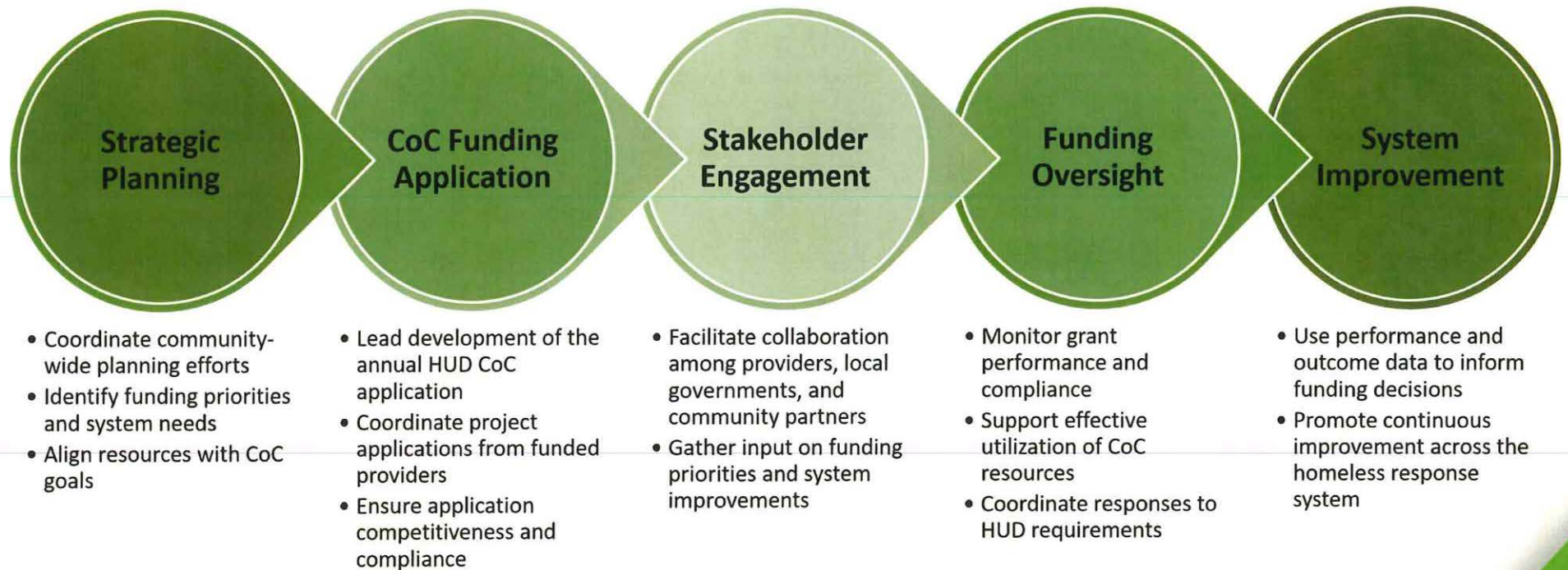
- **Melissa's Place**
- **Senator Phillip D. Lewis**
- **Housing Resource Center II**
- **Belle Glade Transition Shelter**
- **Program REACH**

- **49% of exits from emergency shelter result in permanent housing exits.**

- **This demonstrates strong system performance but relies heavily on continued HUD-funded housing pathways.**



County Role as Collaborative Applicant



Homeless Plan Update: Responding to New Challenges and Opportunities



New state requirements regarding public camping



Evolving HUD policies and funding priorities



Rising demand on shelter and housing resources



Need for enhanced system coordination and accountability

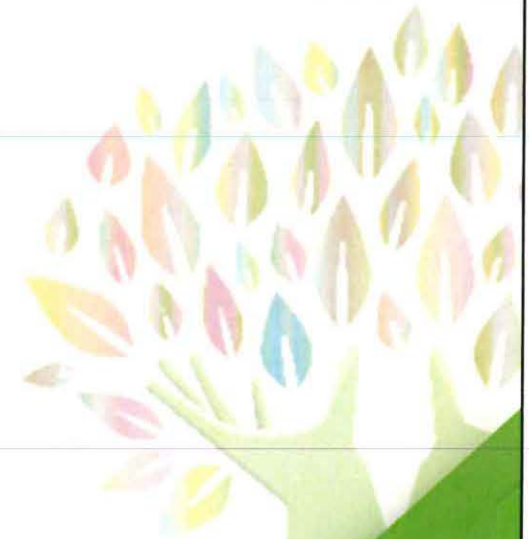


Continued focus on reducing unsheltered homelessness



Measure	Estimated Impact
County Investment	\$19.8M
Individuals Served (HRCs)	1,105+
Navigation Center Contacts	123,000+
Estimated Annual Cost Avoidance	\$3.9M-\$7.9M
Primary Savings Areas	EMS, ER, Law Enforcement, Crisis Services, Jail Costs

Gulfstream Goodwill Industries



AGENCY BUDGET

Where Our Funding Comes From

A diversified, accountable funding model built on public-private partnership — sustained across sixty years of service to Palm Beach County.

\$72.7M

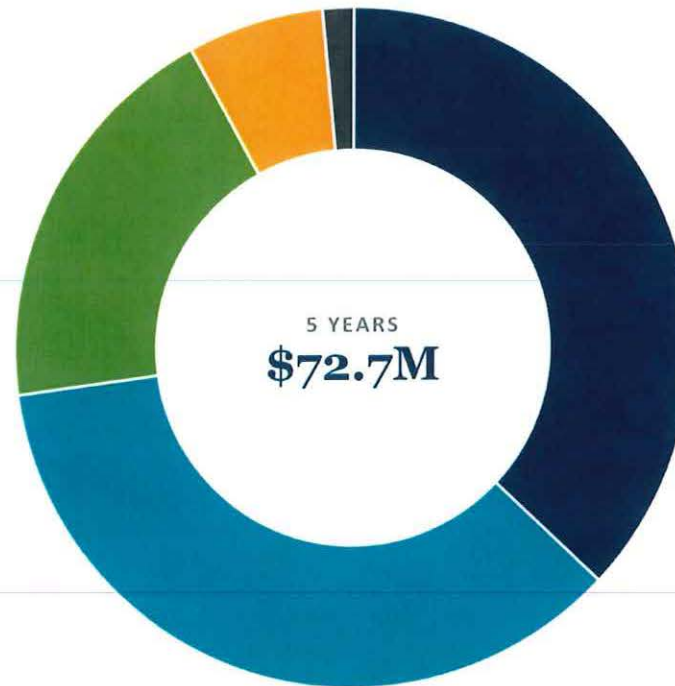
Total revenue, 2021–2025 (5-year)

60 years of service to our community since 1966

Revenue Sources

GULFSTREAM GOODWILL

Changing lives through Housing, Education, Training & Employment



Contracts & Programs

\$26.9M 37%

Financially Assisted Agencies (FAA)

\$26.0M 36%

\$745K in Fundraising

Federal – HUD

\$14.0M 19%

Fundraising & Donors

\$4.8M 6.5%

PBC Justice Services

\$1.1M 1.5%

\$515K from Homeless Coalition- move in costs

Source: GGI 5-Year Revenue & Statistics, FY2021–2025.

Six Pathways to Independence



Shelters / Housing Resource Centers

Safe emergency shelter, case management & connections to resources for those experiencing homelessness.



Housing

Affordable scattered-site & owned housing creating stable, sustainable living for individuals and families.



Prevention Services

FAA Senior & Just in Time prevention plus Homeless to Home (GL Homes) — keeping at-risk neighbors housed.



Career Academy of the Palm Beaches

Hands-on vocational training, life-skills development & job placement for students with disabilities.



Capabilities of the Palm Beaches

Person-centered day programs building independence for adults with intellectual & developmental disabilities.



Justice Services

Reentry support, case management & employment assistance helping returning citizens reintegrate.

OUR IMPACT

GOODWILL



27,395

People served countywide



7,675

Homeless individuals & families served in Housing Resource Centers



11,331

People with disabilities including mental health and substance use disorder served



570K+

Hours of job training delivered



1,051

Individuals who found employment



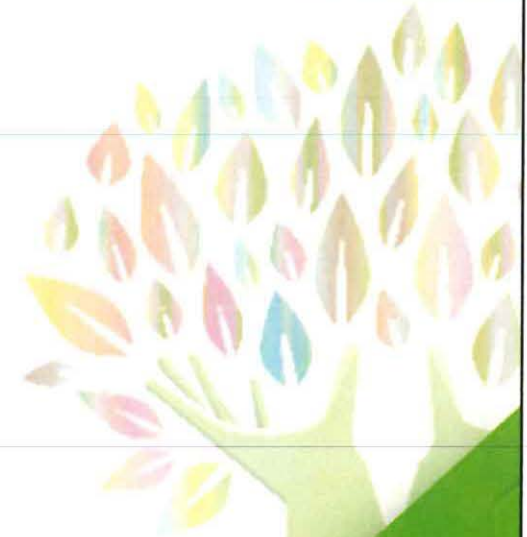
5,401

Senior citizens served

The Lord's Place

THE
LORD'S
PLACE

*Breaking the Cycle
of Homelessness*



The Lord's Place

Breaking the cycle of homelessness by providing innovative, compassionate and effective services to men, women, and children in our community.



Housing

- Funding: \$518,700
- Programs:
 - Operation Home Ready - 82 adults
 - Project Family Care - 24 families
 - Joshua House - 15 adult men
- Impact
 - 195 individuals served
 - 100% stably housed
 - 89% six month return avoidance

OSF - Peer Support

- Funding: \$350,000
- Services:
 - Housing Navigation
 - Basic Needs (food, ids, etc.)
 - Resource & Service Referral
- Impact
 - 150 served
 - > 70% improve recovery
 - > 70% secure housing

Job Training

- Funding: \$214,731
- Services:
 - Job Skills Instruction
 - Job Coaching
 - Job Training
- Impact
 - 179 coached
 - 145 trained
 - 68 employed

CARE Team

- Funding: \$410,000
- Services:
 - Psychiatric Care
 - Physical health support
 - Recovery peer services
- Impact
 - 60 individuals served
 - > 50% maintain housing
 - > 70% improve recovery

Culinary 2 Work

- Funding: \$267,750
- Services:
 - Street Outreach
 - Culinary Training
 - Wraparound Services
- Impact
 - 14 chef apprentices served
 - 1,000 meals per week
 - 100% housed & employed or trained

Reentry

- Funding: \$447,792
- Services:
 - Case management & peer support
 - Community resource connection
 - Comprehensive transition planning
- Impact
 - 180 returning citizens served
 - 75% connected to housing
 - 80% avoid recidivism after 1 year

The Lord's Place

Breaking the cycle of homelessness by providing innovative, compassionate and effective services to men, women, and children in our community.



IMPACT:

- **Matching**
- **Leveraging**
- **Sustainability**
- **Community Needs Alignment**
- **Collaboration**
- **Continuous Quality Improvement**

**THE
LORD'S
PLACE**
*Breaking the Cycle
of Homelessness*

Adopt-A-Family

June 2026

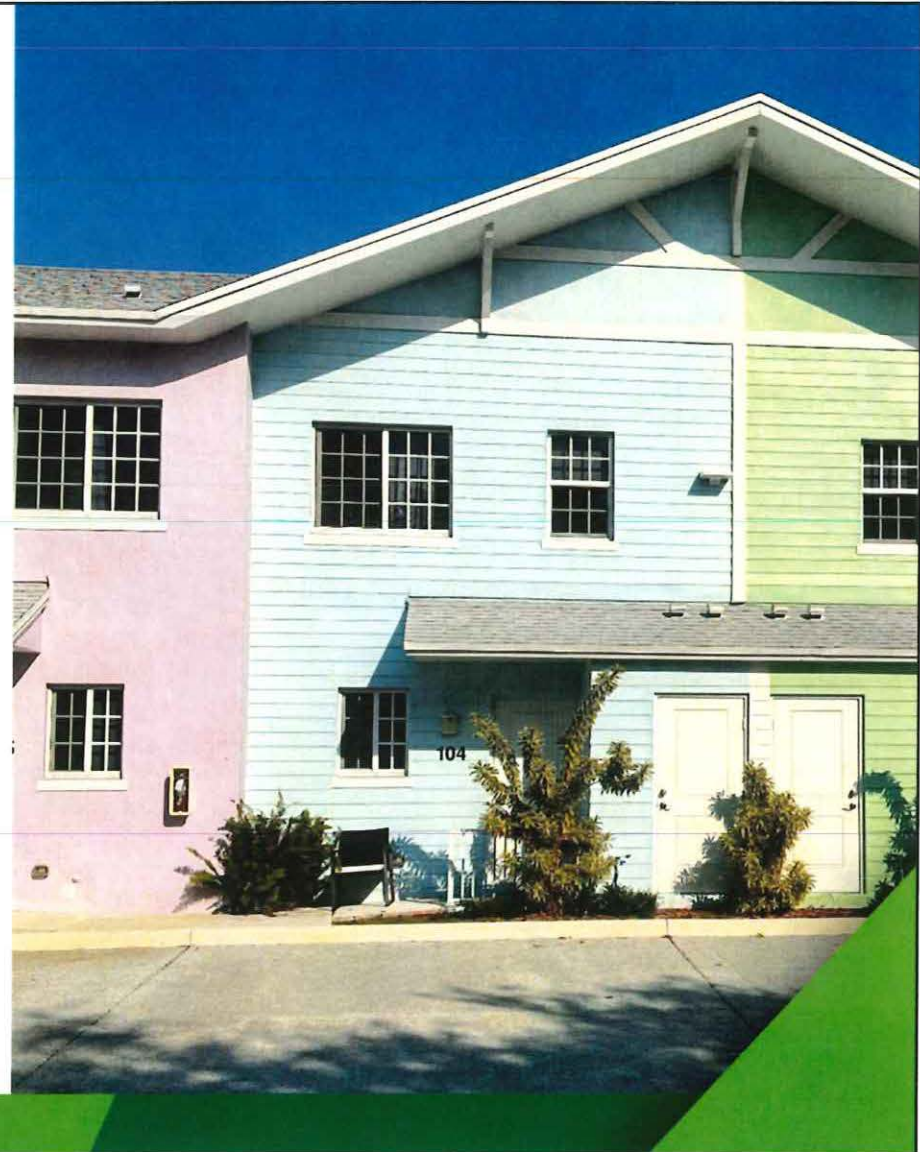
Adopt-A-Family is dedicated to strengthening families with children in their efforts to achieve stability and self-sufficiency by providing access to all-encompassing services.



ADOPT-A-FAMILY
OF THE PALM BEACHES

What We Do

- Own and operate 112 housing units
- Provide on-site support services including mental health therapy, job coaching, and education advocacy
- Provide education services, including afterschool programs for K-12 students living on our campus
- Provide homeless prevention services for 200 families each year
- Operate the Family Division of the Senator Philip D. Lewis Homeless Resource Center (HRC), including screening, navigation, diversion, hotel shelter placement, Rapid Re-Housing, and Permanent Supportive Housing
- Operate Program REACH emergency shelter in partnership with PBC, serving 110 families each year





ADOPT-A-FAMILY
OF THE PALM BEACHES

Our 2025 Impact

99% of Project Grow students **earned promotion** to the next grade level

92% of families served in Permanent Supportive Housing exited to or maintained **permanent housing**

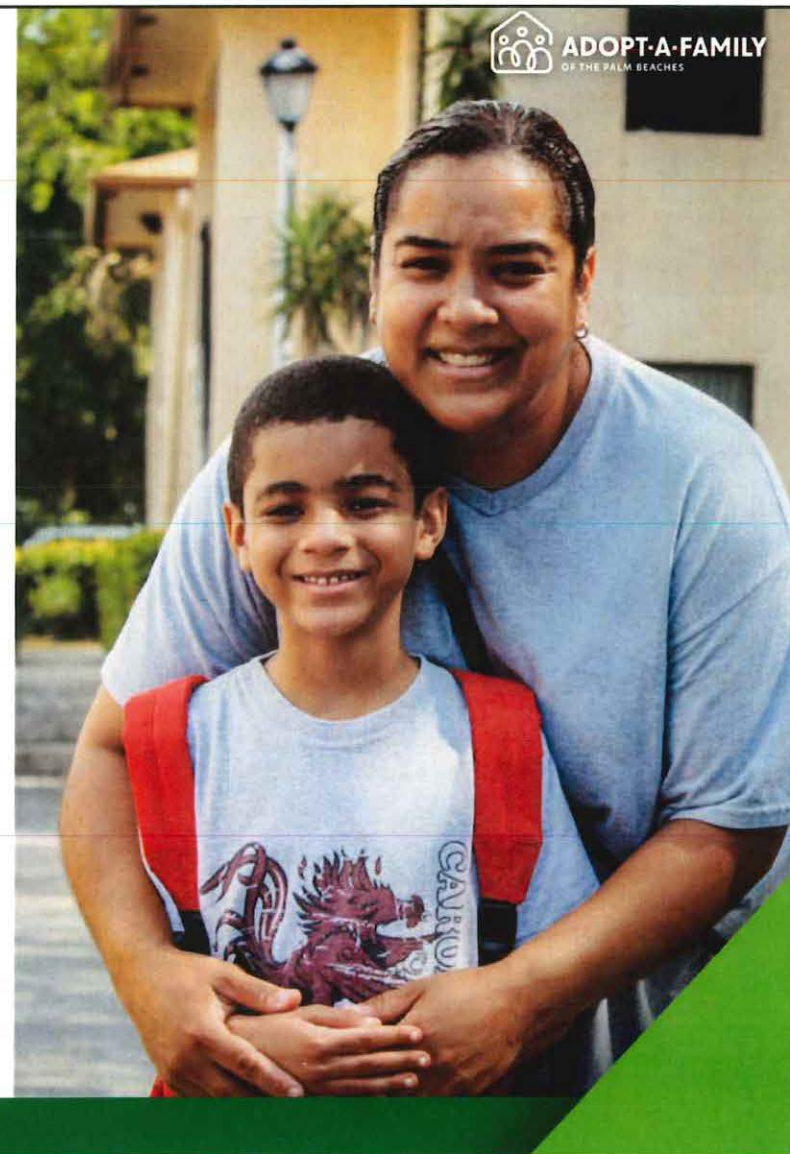
Provided Emergency Shelter to **239 families**

95% of families who received assistance catching up on past due rent **maintained stability** for 6 months

Of the families housed in Rapid Re-Housing, **92%** exited successfully to permanent housing

Homeless Coalition Partnership

- Partnership began in 2014, serving **over 800 families** at the Senator Philip D. Lewis Homeless Resource Center
- \$200,000 grant annually, serving 40 families each year
- **100%** of funds have been used as direct assistance to help families exit out of homelessness
- **97%** of families served over the past decade have successfully exited the program to stable housing
- Quarterly Project Homeless Connect events serve as a community space where families can connect with available resources, including AAF programs





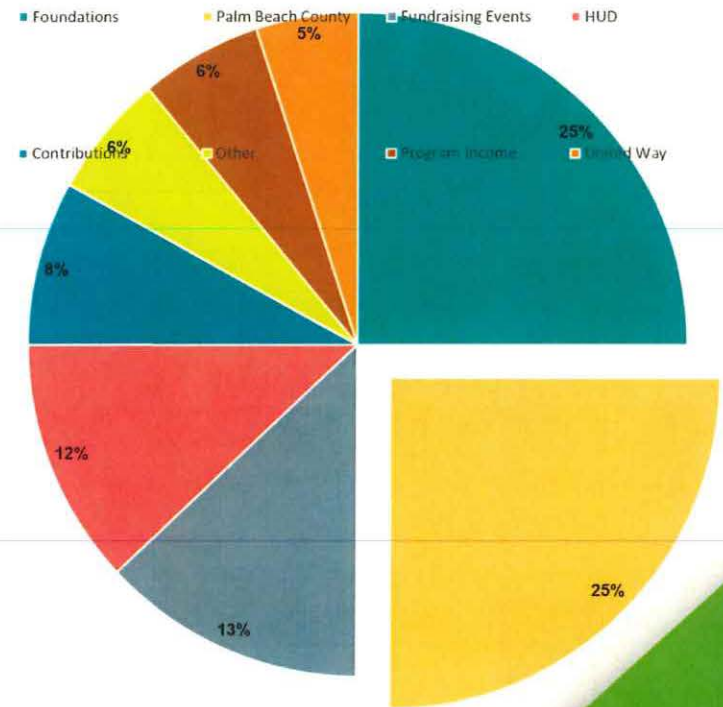
Agency Budget

- AAF is funded through collaborative partners supporting our mission, including:
 - 30+ Private Foundations, including Day 1 Families Fund investing \$1M annually to expand HRC activities
 - 300+ Individual Contributions
 - 12+ Fundraising Events
- Since 2007, AAF has maintained a 4-star Charity Navigator rating, including 100% in fiscal stewardship



ADOPT-A-FAMILY
OF THE PALM BEACHES

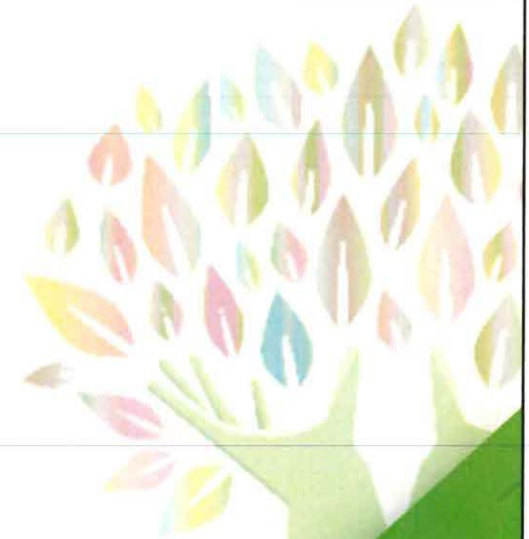
Revenue Sources



Vita Nova



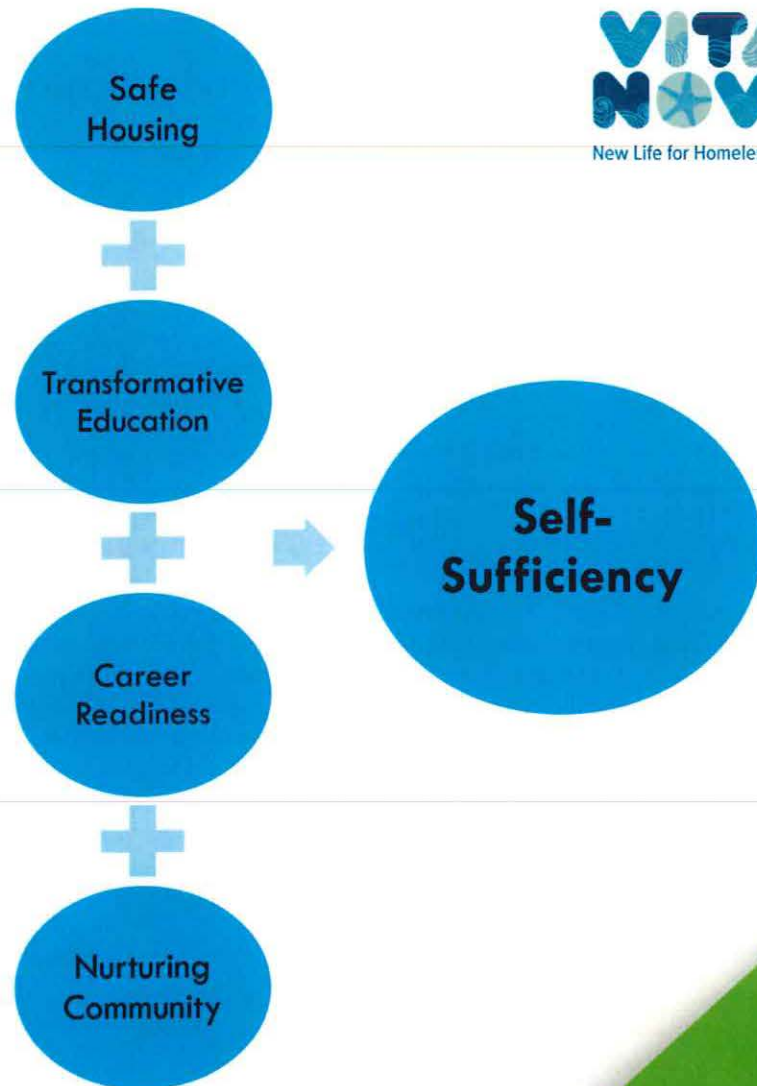
New Life for Homeless Youth



OUR MISSION:

VITA NOVA EMPOWERS YOUNG ADULTS (AGES 18-25) WHO ARE EXPERIENCING HOMELESSNESS

TO RECLAIM THEIR FUTURES BY PROVIDING SAFE HOUSING, TRANSFORMATIVE EDUCATION, CAREER READINESS, AND A NURTURING COMMUNITY



VITA NOVA SERVICES



COMMUNITY IMPACT (FYE 9/30/2025)



COORDINATED ENTRY

- 500 YOUTH RECEIVE INTAKE ASSESSMENTS

FOOD PANTRY AT THE SPOT DROP-IN CENTER

- 1,640 ASSISTANCE RECORDS TO OVER 260 YOUTH

EDUCATION & EMPLOYABILITY

- NEARLY 200 YOUTH GAIN EMPLOYABILITY SKILLS & CREDENTIALS

EMERGENCY BEDS AT THE SLEEP SPOT

- OVER 550 BED NIGHTS FOR NEARLY 100 YOUTH

TRANSITIONAL & SUPPORTIVE HOUSING

- 136 YOUTH STABLY HOUSED WITH WEEKLY CASE MANAGEMENT

CREATING HOUSING OPPORTUNITIES (CHO)

- 14 INDIVIDUALS HOUSED WITH MOVE-IN RENTAL ASSISTANCE (HOMELESS COALITION)

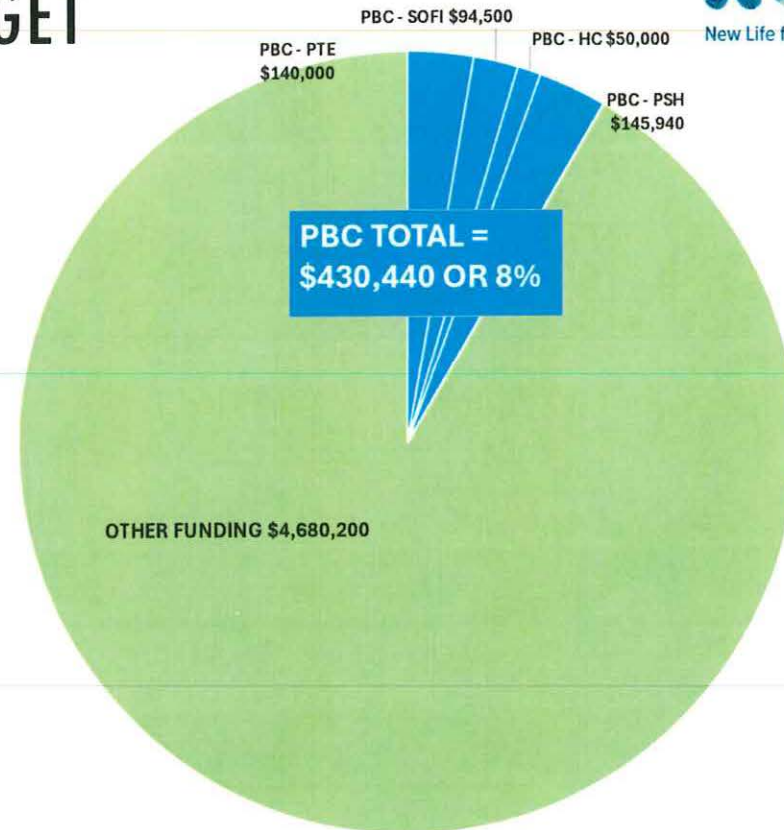
PBC FUNDING CURRENTLY REPRESENTS 8% OF VITA NOVA'S TOTAL BUDGET



New Life for Homeless Youth

PBC ROI = 1,100%

Total Budget	\$5,110,640	100%
PBC	\$430,440	8%
Other Sources	\$4,680,200	92%



■ PBC - PTE ■ PBC - SOFI ■ PBC - HC ■ PBC - PSH ■ OTHER FUNDING ■

EVERY \$1 FROM PBC YIELDS \$11.90 IN SERVICES

Thank You!



Palm Beach County
Board of County Commissioners



Palm Beach County
**COMMUNITY
SERVICES**

Helping People Build Better Communities



Palm Beach County



**THE
LORD'S
PLACE**
Breaking the Cycle
of Homelessness



ADOPT-A-FAMILY
OF THE PALM BEACHES

**VITA
NOVA**
New Life for Homeless Youth.



**Homeless
Coalition**
PALM BEACH COUNTY