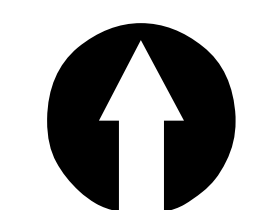
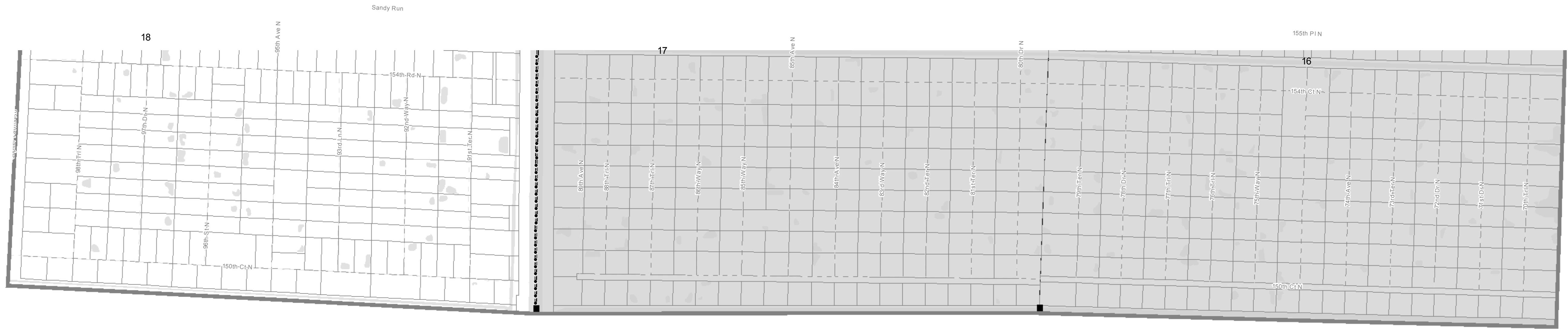
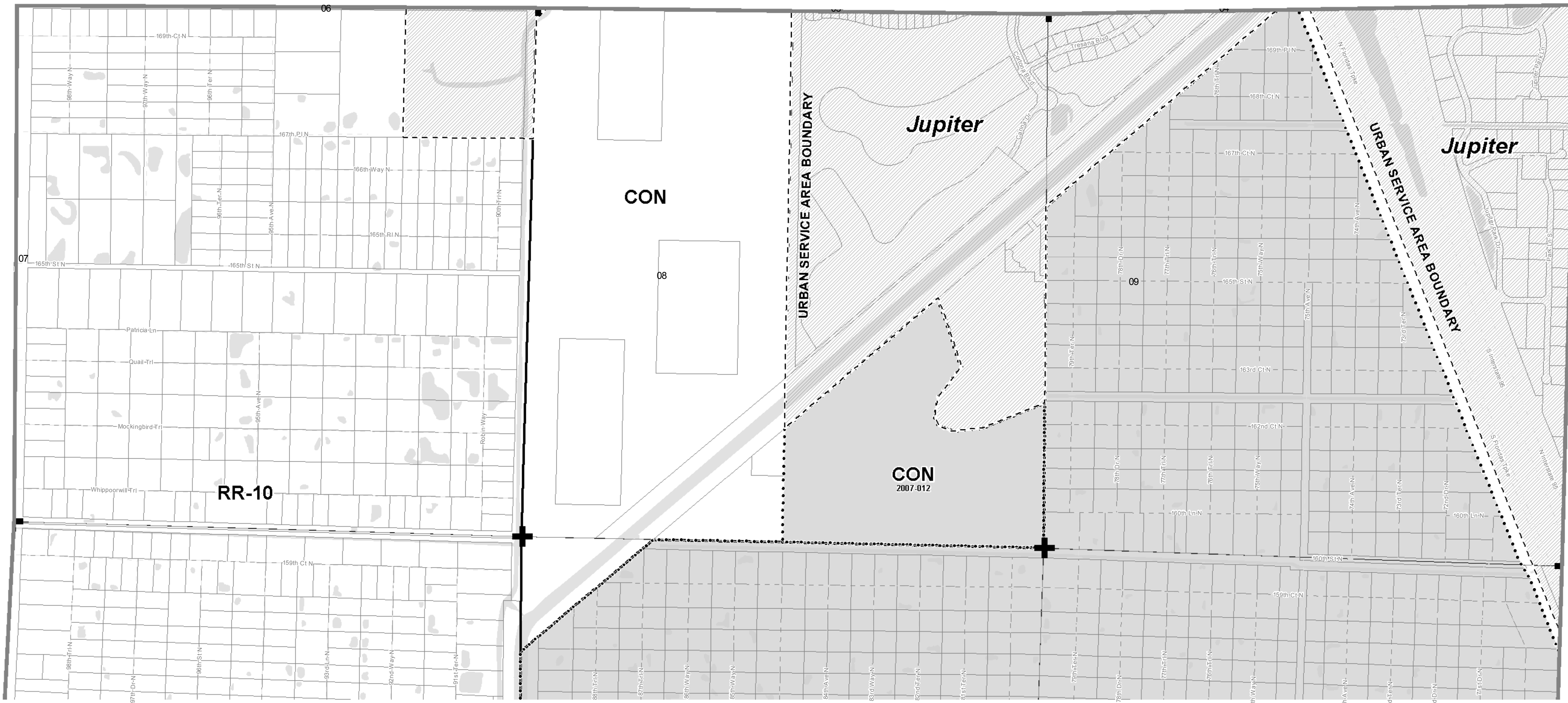


Amendment Table

Amendment ID	Ordinance Number	Adoption Date
00-14 RR 1 (PBC Est)	2000-056	12/6/2000
LGA 2007-0007e	2007-012	8/27/2007

Note: Each site on this map referenced with an Ordinance Number has been subject to a site specific Future Land Use Atlas amendment adopted by the Board of County Commissioners. Please reference the applicable ordinance for conditions of approval that may limit the development to a certain size, use or intensity at the Planning Division and on this webpage: www.pbcgov.com/pzb/planning/ordinances



1 inch = 600 feet
0 600 1,200 Feet

This map is a representation of the official copy of the map on file with Palm Beach County Planning Division.

Future Land Use Atlas of Palm Beach County, Florida

ATLAS PAGE 14

Last Printed On:
May 12, 2009

- Future Land Use
- FLU Atlas Page
- Amendments
- Parcels
- Municipality
- Water



Palm Beach County
Planning, Zoning and Building Department

