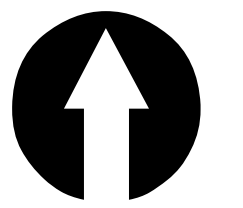
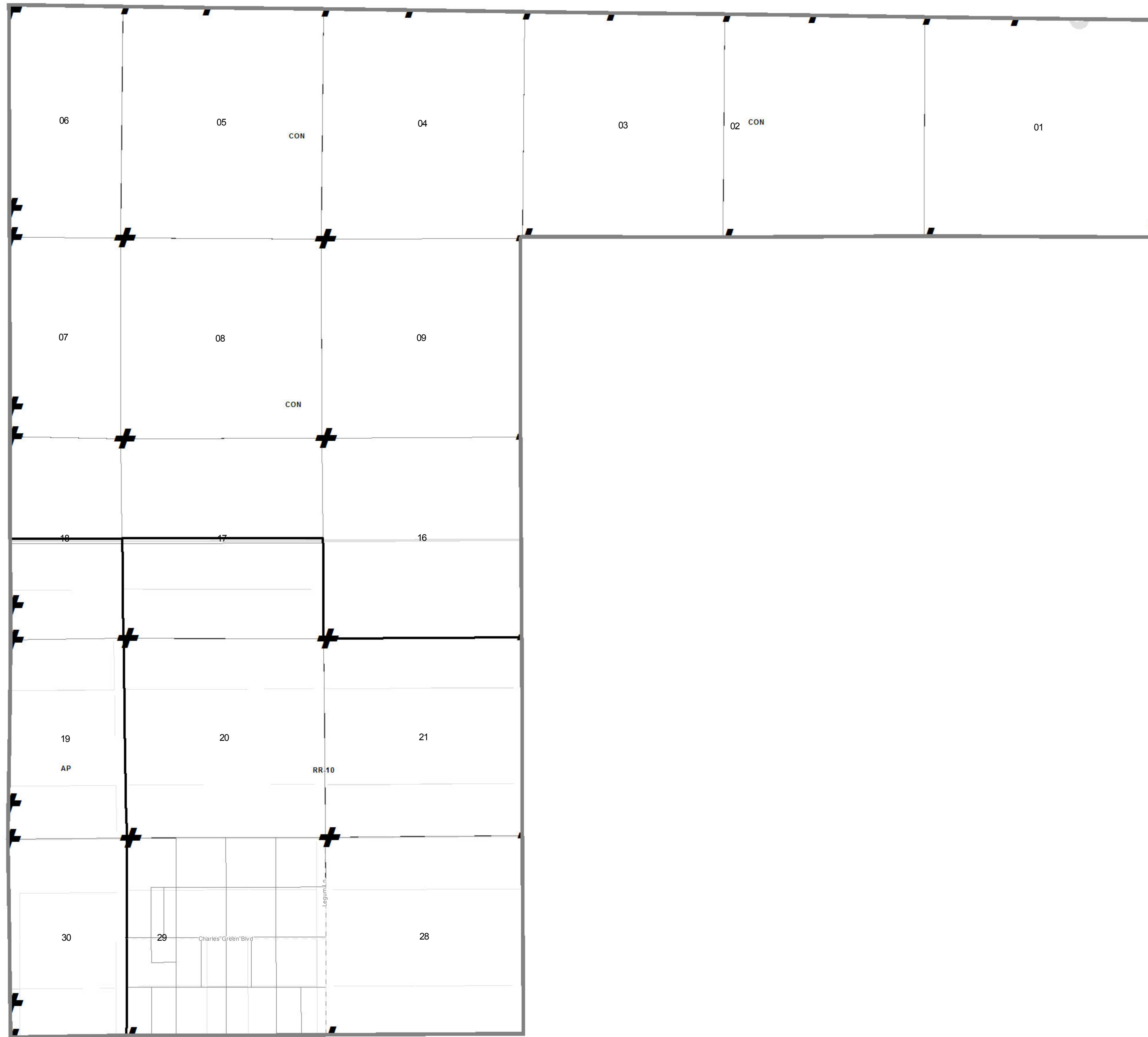


### Amendment Table

Amendment ID	Ordinance Number	Adoption Date
None		

Note: Each site on this map referenced with an Ordinance Number has been subject to a site specific Future Land Use Atlas amendment adopted by the Board of County Commissioners. Please reference the applicable ordinance for conditions of approval that may limit the development to a certain size, use or intensity at the Planning Division and on this webpage: [www.pbcgov.com/pzb/planning/ordinances](http://www.pbcgov.com/pzb/planning/ordinances)



1 inch = 1,500 feet



This map is a representation of the official copy of the map on file with Palm Beach County Planning Division.

## Future Land Use Atlas of Palm Beach County, Florida

ATLAS PAGE 4042

Last Printed On:  
Aug 1, 2012

- Future Land Use
- FLU Atlas Page
- Amendments
- Parcels
- Municipality
- Water



Palm Beach County  
Planning, Zoning and Building Department

