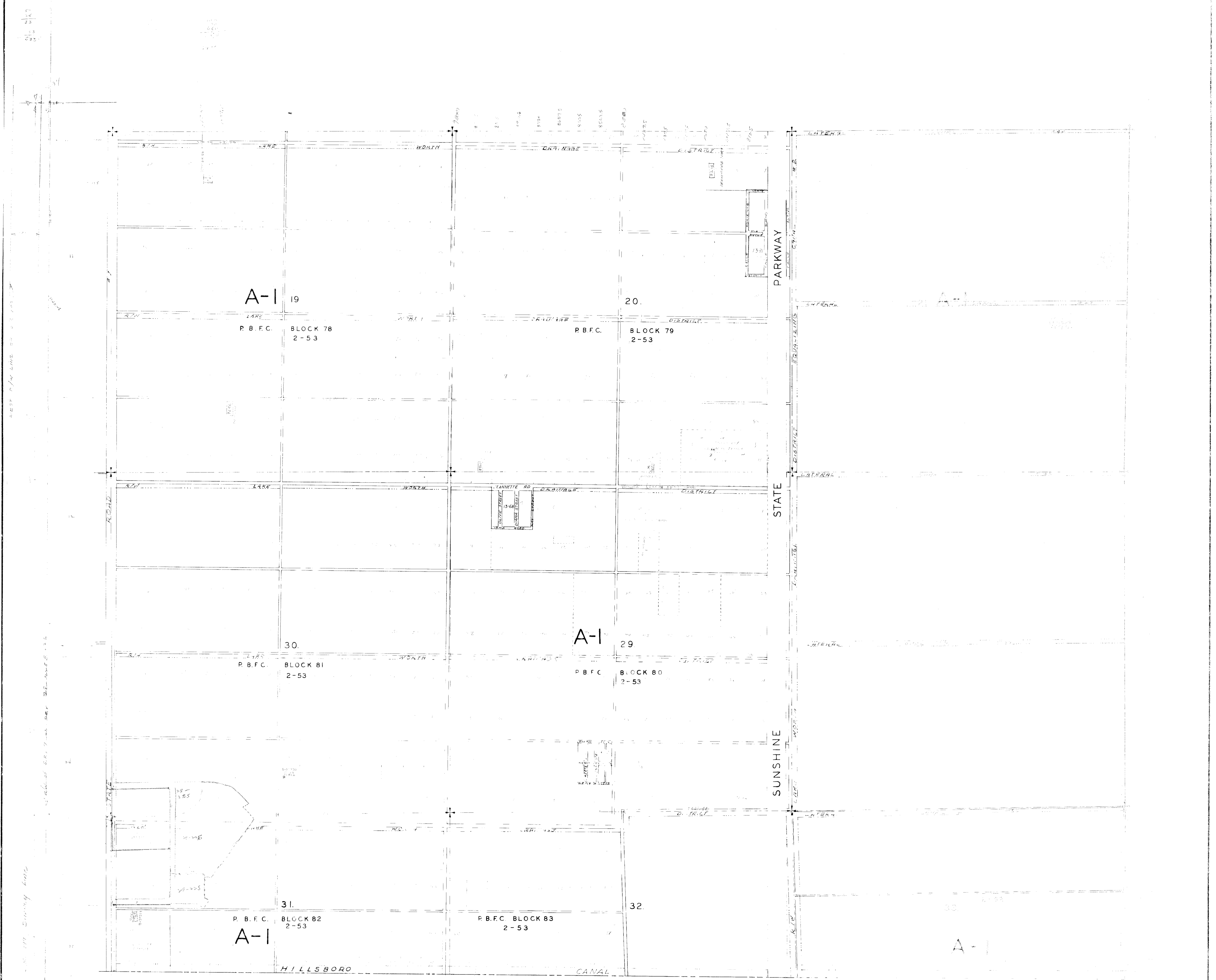


46



BROWARD COUNTY

PALM BEACH COUNTY, FLORIDA
 ZONING DISTRICT MAP
 SCALE: 1" = 600' DATE: 4-9-59
 DRAWING: 47-42 C - SHEET NO. C 54
 DRAWN BY: M.P.R. CHECKED BY:
 DISTRICT BOUNDARIES
 CORPORATE BOUNDARIES

C-54

C-54