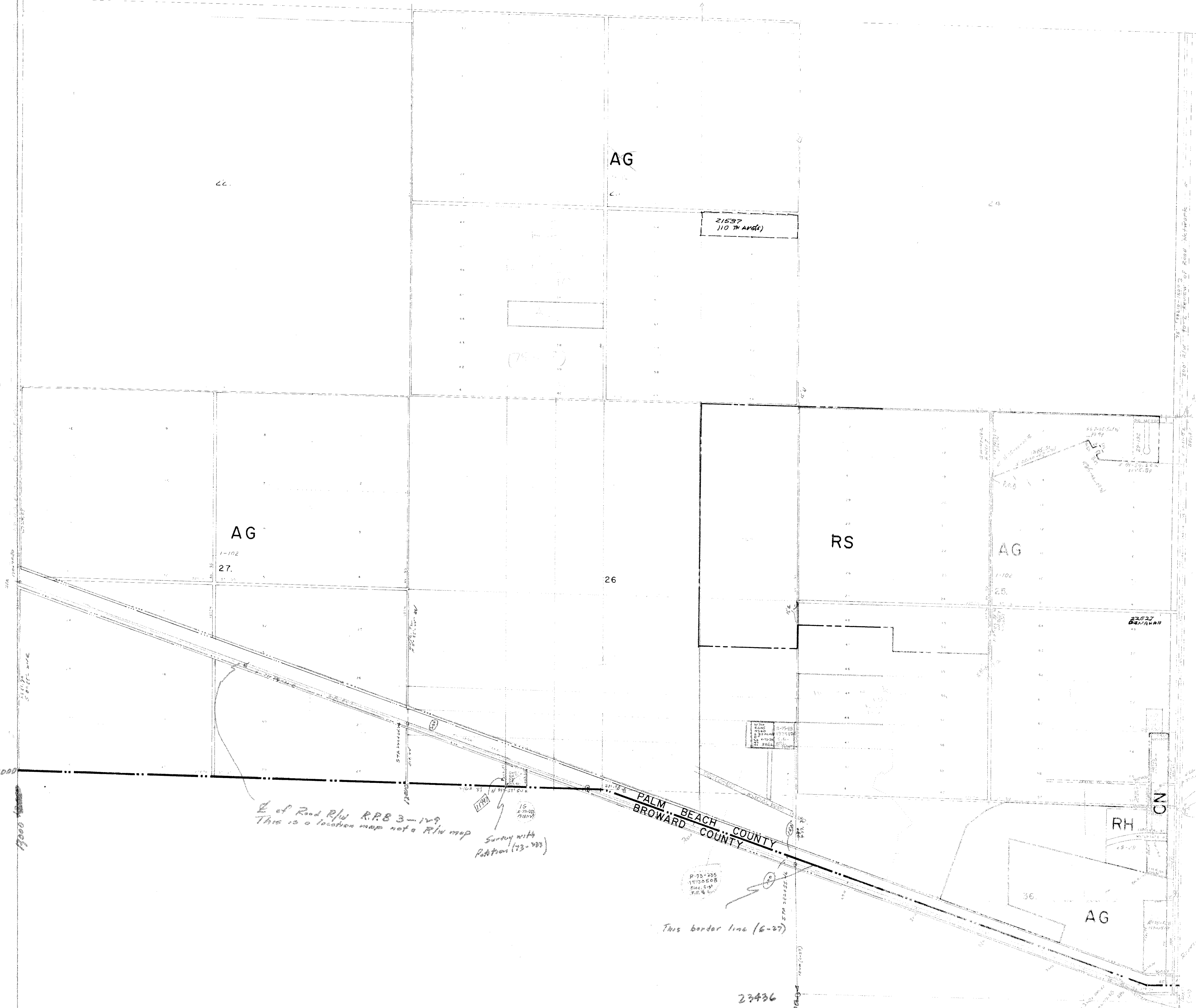


21000

22000

23000



E of Road R/W RPB 3-149
 This is a location map not a R/W map
 Survey with
 Platton (73-988)

This border line (6-27)

BROWARD COUNTY

(b) (16) from This is result of study of Resolution R-75-014 (75-328) Com 10/10/75

RESOLUTIONS	

DISTRICT BOUNDARIES ————
 CORPORATE BOUNDARIES [stippled pattern]

PALM BEACH COUNTY, FLORIDA
 OFFICIAL ZONING DISTRICT MAP
 Scale 1" = 500' approx. Date 4-1-73
 Quadrant 47-41 D Sheet No. 69