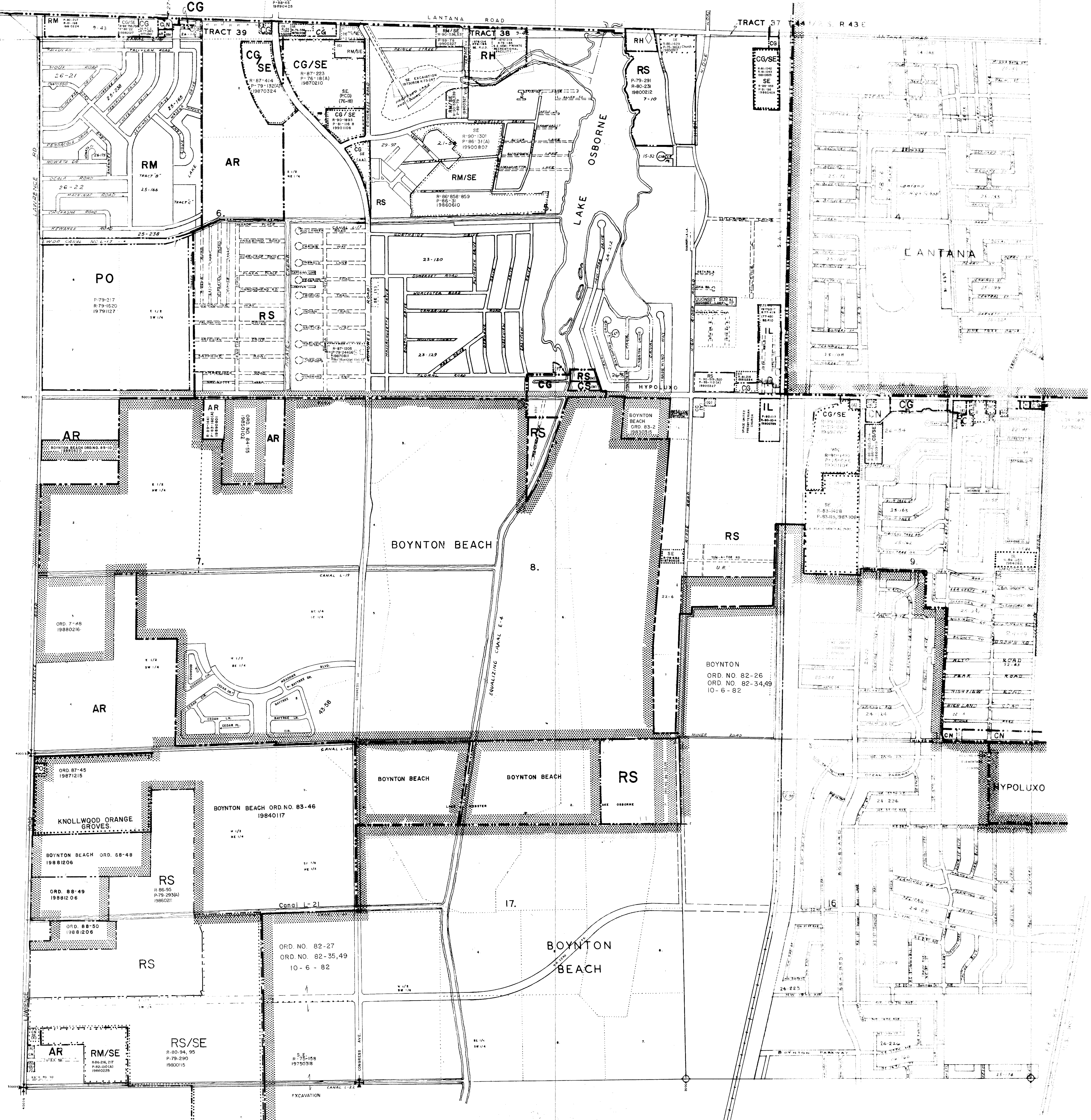


ATLANTIS



| RESOLUTIONS | | |
|--------------------------|--------------------------|--------------------------|
| ORD. 80-1394 19801394 | ORD. 80-1395 19801395 | ORD. 80-1396 19801396 |
| ORD. 80-1397 19801397 | ORD. 80-1398 19801398 | ORD. 80-1399 19801399 |
| ORD. 80-1400 19801400 | ORD. 80-1401 19801401 | ORD. 80-1402 19801402 |
| ORD. 80-1403 19801403 | ORD. 80-1404 19801404 | ORD. 80-1405 19801405 |
| ORD. 80-1406 19801406 | ORD. 80-1407 19801407 | ORD. 80-1408 19801408 |
| ORD. 80-1409 19801409 | ORD. 80-1410 19801410 | ORD. 80-1411 19801411 |
| ORD. 80-1412 19801412 | ORD. 80-1413 19801413 | ORD. 80-1414 19801414 |
| ORD. 80-1415 19801415 | ORD. 80-1416 19801416 | ORD. 80-1417 19801417 |
| ORD. 80-1418 19801418 | ORD. 80-1419 19801419 | ORD. 80-1420 19801420 |

- - - - - PUD BOUNDARIES
 - - - - - DISTRICT BOUNDARIES
 - - - - - CORPORATE BOUNDARIES

Zoning Categories indicated on this sheet do not necessarily indicate consistency with Comprehensive Plan Requirements. Please contact the Planning Division at 800 13th Street (407) 697-4001 to confirm Comprehensive Plan Land Use designation.

| RESOLUTIONS | | |
|--------------------------|--------------------------|--------------------------|
| ORD. 80-1421 19801421 | ORD. 80-1422 19801422 | ORD. 80-1423 19801423 |
| ORD. 80-1424 19801424 | ORD. 80-1425 19801425 | ORD. 80-1426 19801426 |
| ORD. 80-1427 19801427 | ORD. 80-1428 19801428 | ORD. 80-1429 19801429 |
| ORD. 80-1430 19801430 | ORD. 80-1431 19801431 | ORD. 80-1432 19801432 |
| ORD. 80-1433 19801433 | ORD. 80-1434 19801434 | ORD. 80-1435 19801435 |
| ORD. 80-1436 19801436 | ORD. 80-1437 19801437 | ORD. 80-1438 19801438 |
| ORD. 80-1439 19801439 | ORD. 80-1440 19801440 | ORD. 80-1441 19801441 |
| ORD. 80-1442 19801442 | ORD. 80-1443 19801443 | ORD. 80-1444 19801444 |
| ORD. 80-1445 19801445 | ORD. 80-1446 19801446 | ORD. 80-1447 19801447 |

PALM BEACH COUNTY, FLORIDA
OFFICIAL ZONING DISTRICT MAP
 Scale 1" = 400' approx Date 11/1/82
 Quadrant 45 438 Sheet No. 19