

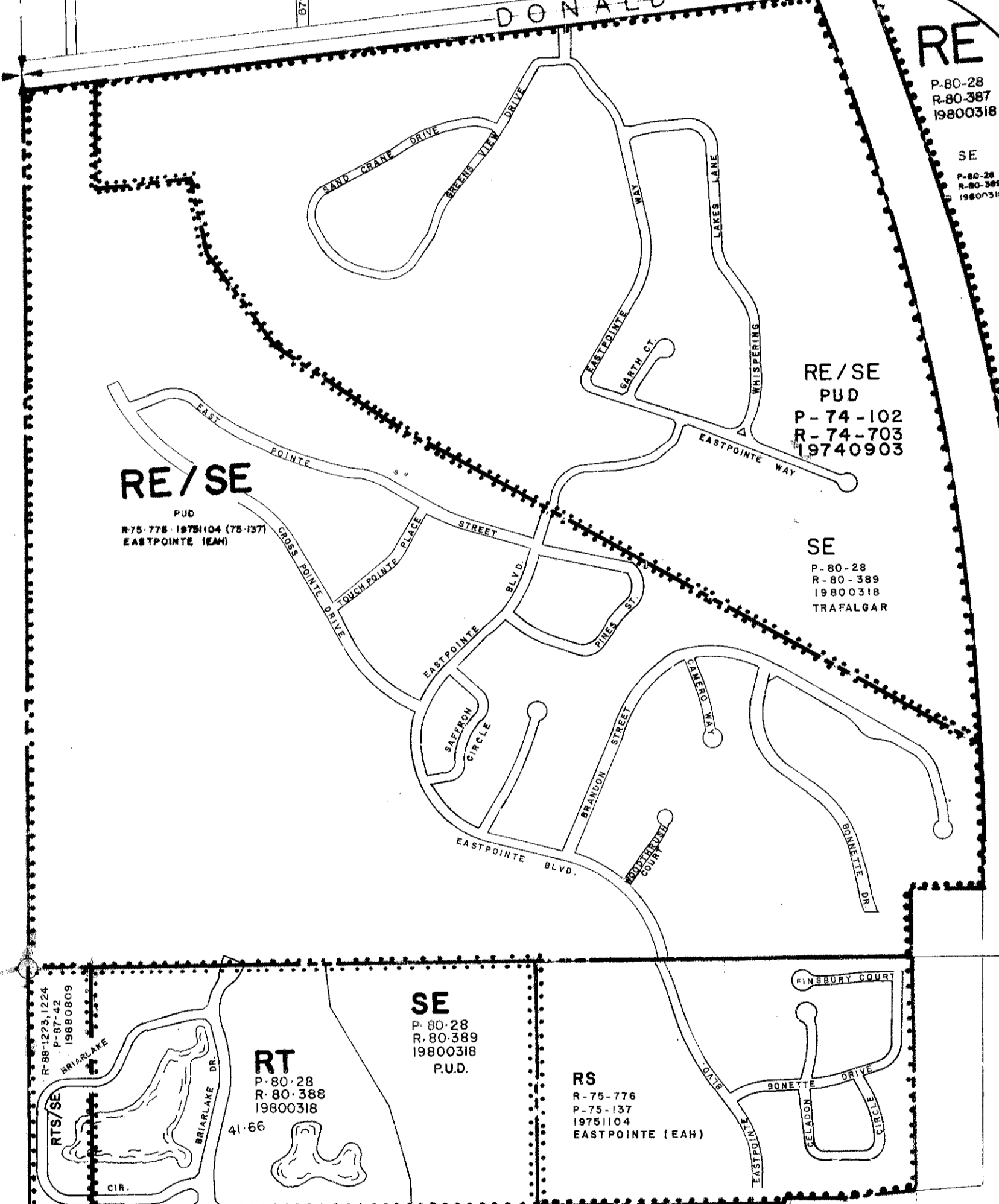
AR  
23

24 TRAIL

SR A1A  
HIGHWAY

SE  
R-87-207  
P-86-73  
19870210

SE  
R-89-220  
P-86-27  
19870314



RE/SE  
PUD  
R-75-104 (12-107)  
EASTPOINTE (EAM)

RE/SE  
PUD  
P-74-102  
R-74-103  
19740903

SE  
P-80-28  
R-80-389  
19800316  
TRAFALGAR

RT  
P-80-28  
R-80-389  
19800316

SE  
P-80-28  
R-80-389  
19800316

RS  
R-75-176  
P-75-137  
19751004  
EASTPOINTE (EAM)

PALM BEACH GARDENS  
ORD. 16, 1990  
19900920

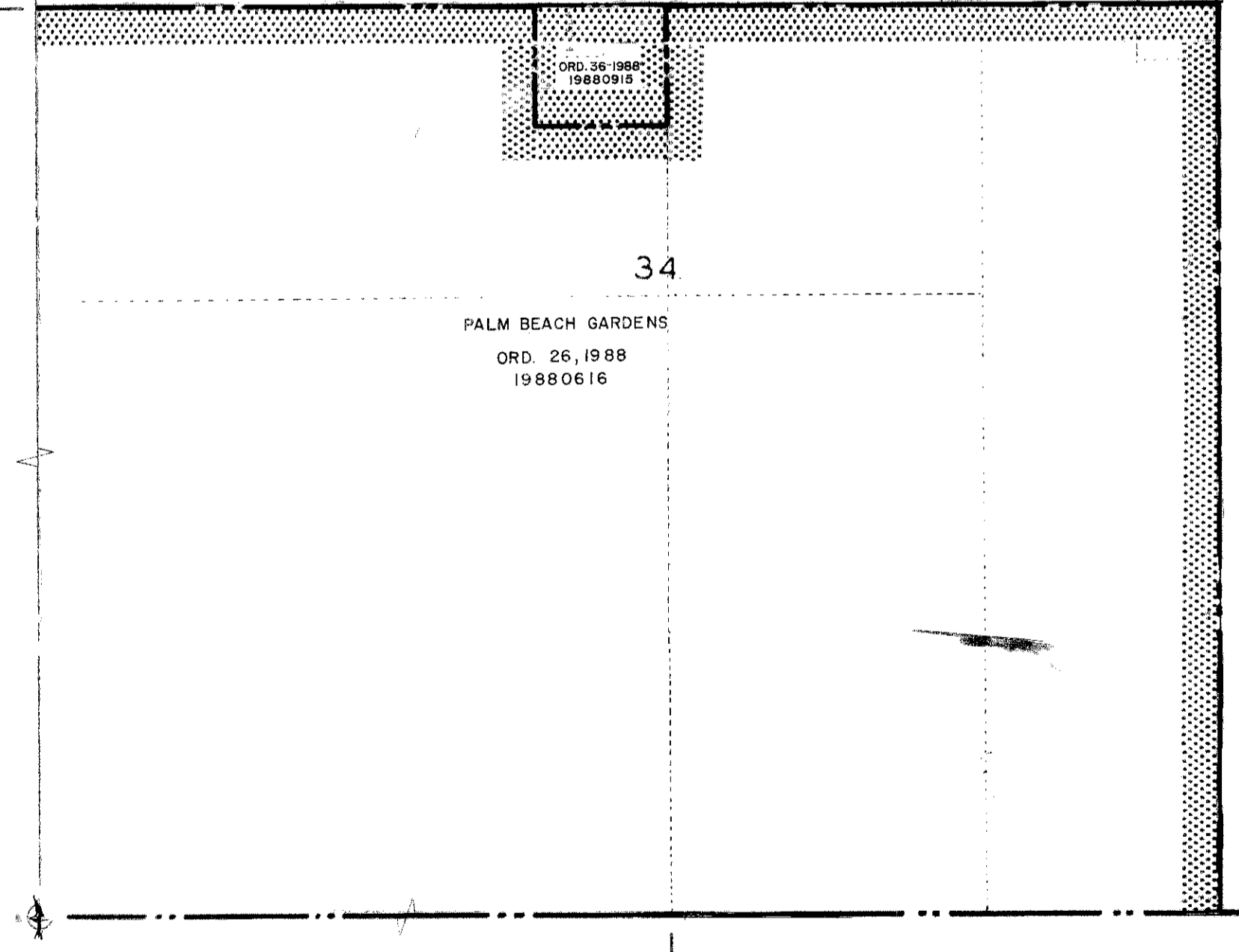
26

PALM BEACH GARDENS  
ORD. 23, 1989  
19890616

25

A

AR/SE  
P-75-416  
R-75-28  
19750604



PALM BEACH GARDENS  
ORD. 26, 1988  
19880616

34

PALM BEACH GARDENS  
ORD. 17, 1990  
19900920

35

PALM BEACH GARDENS  
ORD. 27, 1988  
19880616

36

PALM BEACH GARDENS  
ORD. 27, 1988  
19880616

36

PALM BEACH GARDENS

RESOLUTIONS	
15	R-81-224, R-82-130 19810504, 19820104 LAKE GARDEN
16	R-82-130, R-82-131 19820104, 19820104 LAKE GARDEN
17	R-82-130, R-82-131 19820104, 19820104 LAKE GARDEN
18	R-82-130, R-82-131 19820104, 19820104 LAKE GARDEN
19	R-82-130, R-82-131 19820104, 19820104 LAKE GARDEN
20	R-82-130, R-82-131 19820104, 19820104 LAKE GARDEN
21	R-82-130, R-82-131 19820104, 19820104 LAKE GARDEN
22	R-82-130, R-82-131 19820104, 19820104 LAKE GARDEN
23	R-82-130, R-82-131 19820104, 19820104 LAKE GARDEN
24	R-82-130, R-82-131 19820104, 19820104 LAKE GARDEN

RESOLUTIONS 27	
1	1988, ORD. 19880616 19880616
2	1988, ORD. 19880616 19880616
3	1988, ORD. 19880616 19880616
4	1988, ORD. 19880616 19880616
5	1988, ORD. 19880616 19880616
6	1988, ORD. 19880616 19880616
7	1988, ORD. 19880616 19880616
8	1988, ORD. 19880616 19880616
9	1988, ORD. 19880616 19880616
10	1988, ORD. 19880616 19880616

DISTRICT BOUNDARIES  
CORPORATE BOUNDARIES

Zoning Categories indicated on this sheet do not necessarily indicate consistency with Comprehensive Plan Requirements. Please contact the Planning Division at 600 13th Street (407) 887-4001 to confirm Comprehensive Plan Land Use designation

**PALM BEACH COUNTY, FLORIDA**  
**OFFICIAL ZONING DISTRICT MAP**  
Scale 1" = 600' approx Date May 1981  
Quadrant 41-42 D Sheet No 27