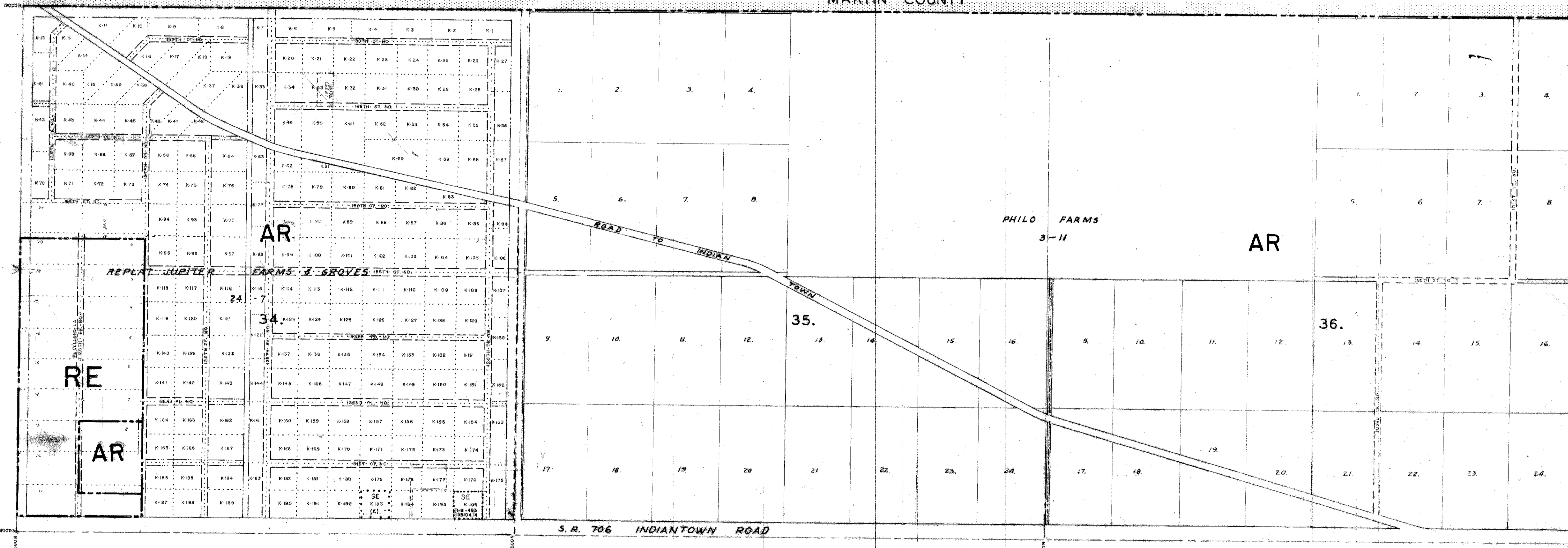


MARTIN COUNTY



RESOLUTIONS			
1			
2			
3			
4			
5			
6			
7			
8			
9			
10			
11			
12			
13			
14			
15			
16			
17			
18			
19			
20			
21			
22			
23			
24			
25			
26			
27			
28			
29			
30			
31			
32			
33			
34			
35			
36			
37			
38			
39			
40			

DISTRICT BOUNDARIES ————  
 CORPORATE BOUNDARIES - - - - -

Zoning Categories indicated on this sheet do not necessarily indicate consistency with Comprehensive Plan Requirements. Please contact the Planning Division at 800 13th Street (407) 697-4001 to confirm Comprehensive Plan Land Use designation.

**PALM BEACH COUNTY, FLORIDA**  
**OFFICIAL ZONING DISTRICT MAP**  
 Scale 1" = 600' approx. Date 4-1-73  
 Quadrant 40-41 D Sheet No. 55