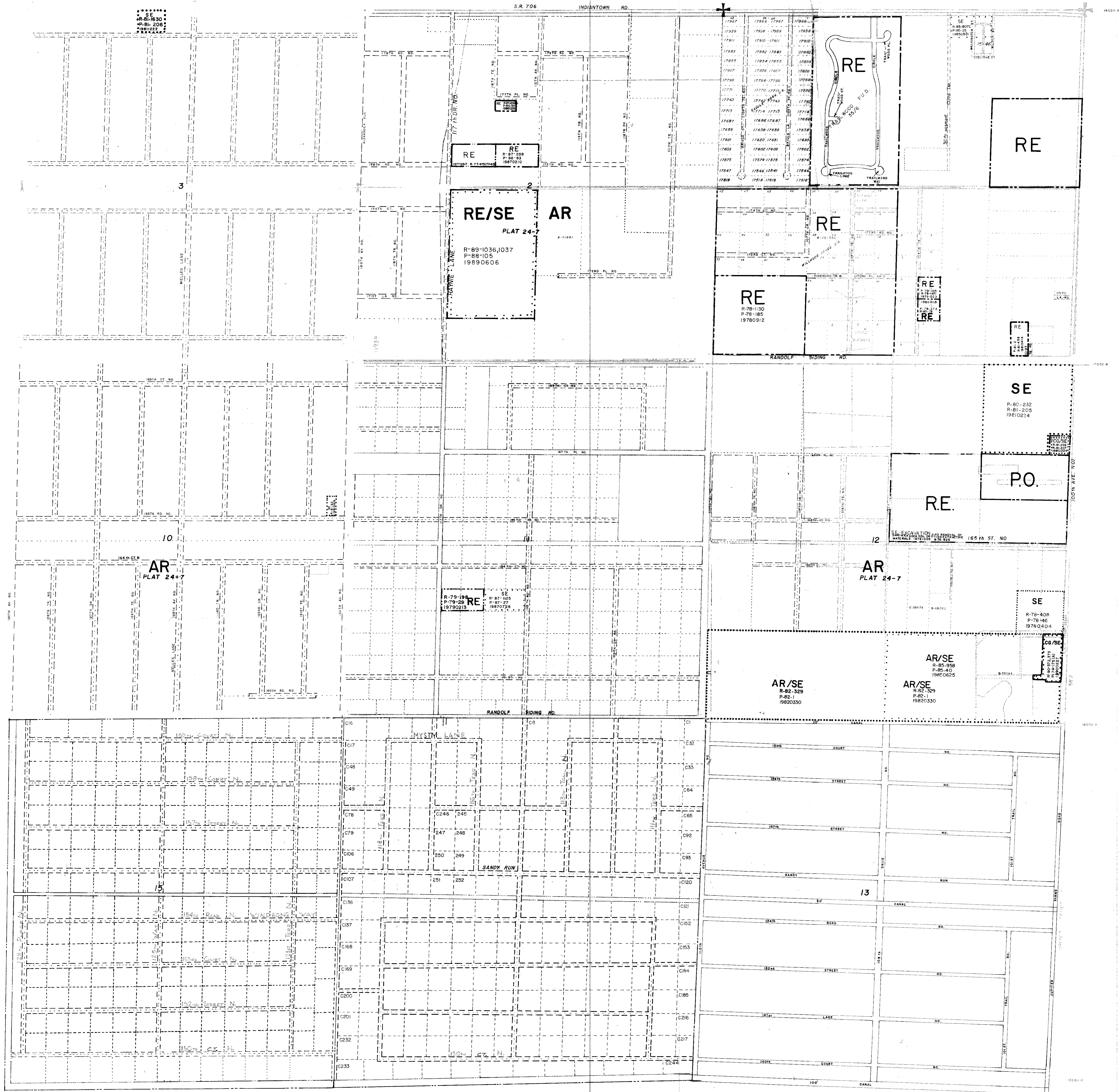


SE
R-81-1830
P-81-206
1981022

S.R. 706 INDIANTOWN RD.



RESOLUTIONS		

Zoning Categories indicated on this sheet do not necessarily indicate consistency with Comprehensive Plan Requirements. Please contact the Planning Division at 800 13th Street (407) 697-4001 to confirm Comprehensive Plan Land Use designation.

PALM BEACH COUNTY, FLORIDA
OFFICIAL ZONING DISTRICT MAP
 Scale 1" = 600' approx. Date 4-1-73
 Quadrant 41-41 A Sheet No. 56

DISTRICT BOUNDARIES
 CORPORATE BOUNDARIES