



SE
R-89-820
P-89-87
19900522

CG

3

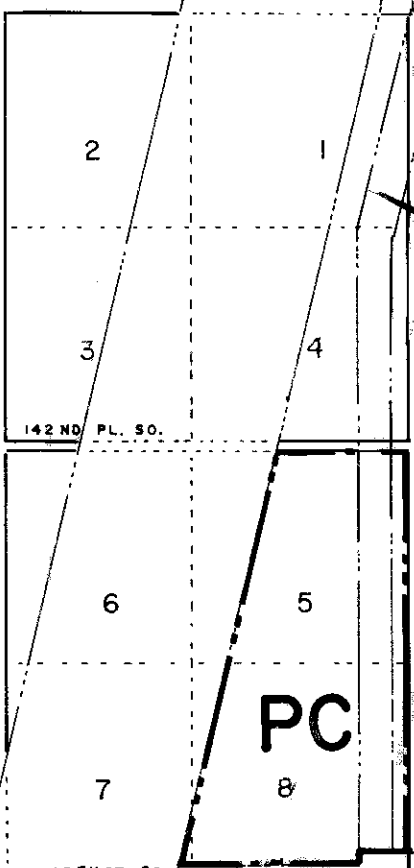
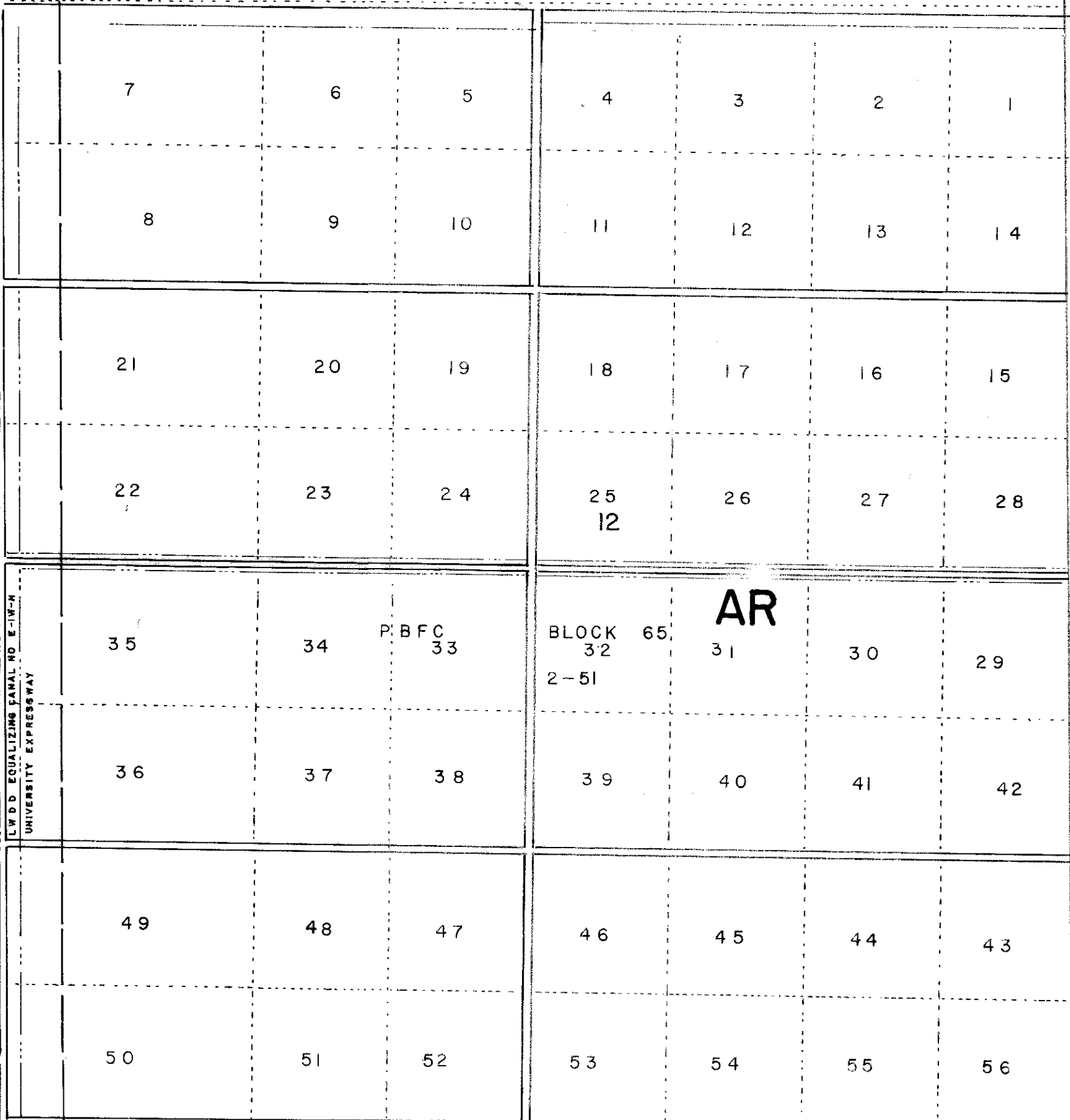
2
AR

1
AR

10
AR

CONSERVATION AREA NO. 1

11



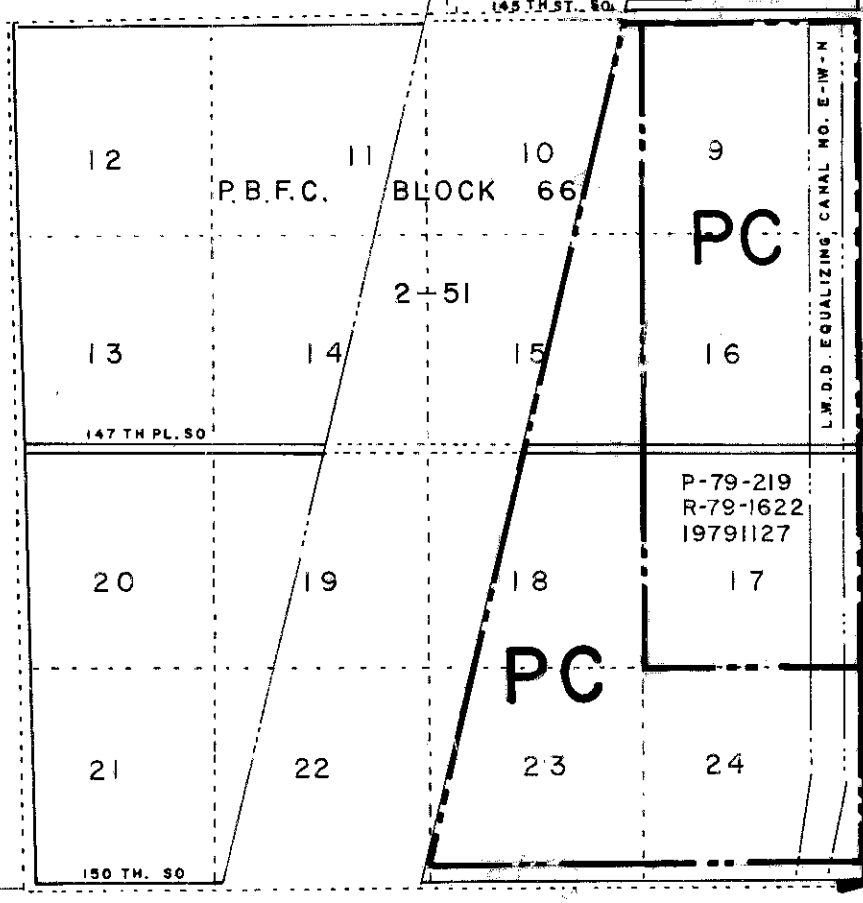
SE
R-88-1071 P-88-70(A) 19880608

AR/SE
R-85-710
P-84-1465A
19850507

AR

15

14
AR



SE R-88-1639 P-87-70 19881004

R-89-1646
P-87-70(A)
19890912

AR/SE
R-85-710
P-84-1465A
19850507

AR

RESOLUTIONS			

DISTRICT BOUND
CORPORATE BOUND

Zoning Categories indicated on this sheet do not necessarily indicate consistency with Comprehensive Plan Requirements. Please contact the Planning Division at 800 13th Street (407) 697-4001 to confirm Comprehensive Plan Land Use designation.

PALM BEACH COUNTY, FLORIDA
OFFICIAL ZONING DISTRICT MAP
Scale 1" = 500' approx. Date 4-1-73
Quadrant 46-41 A Sheet No 66