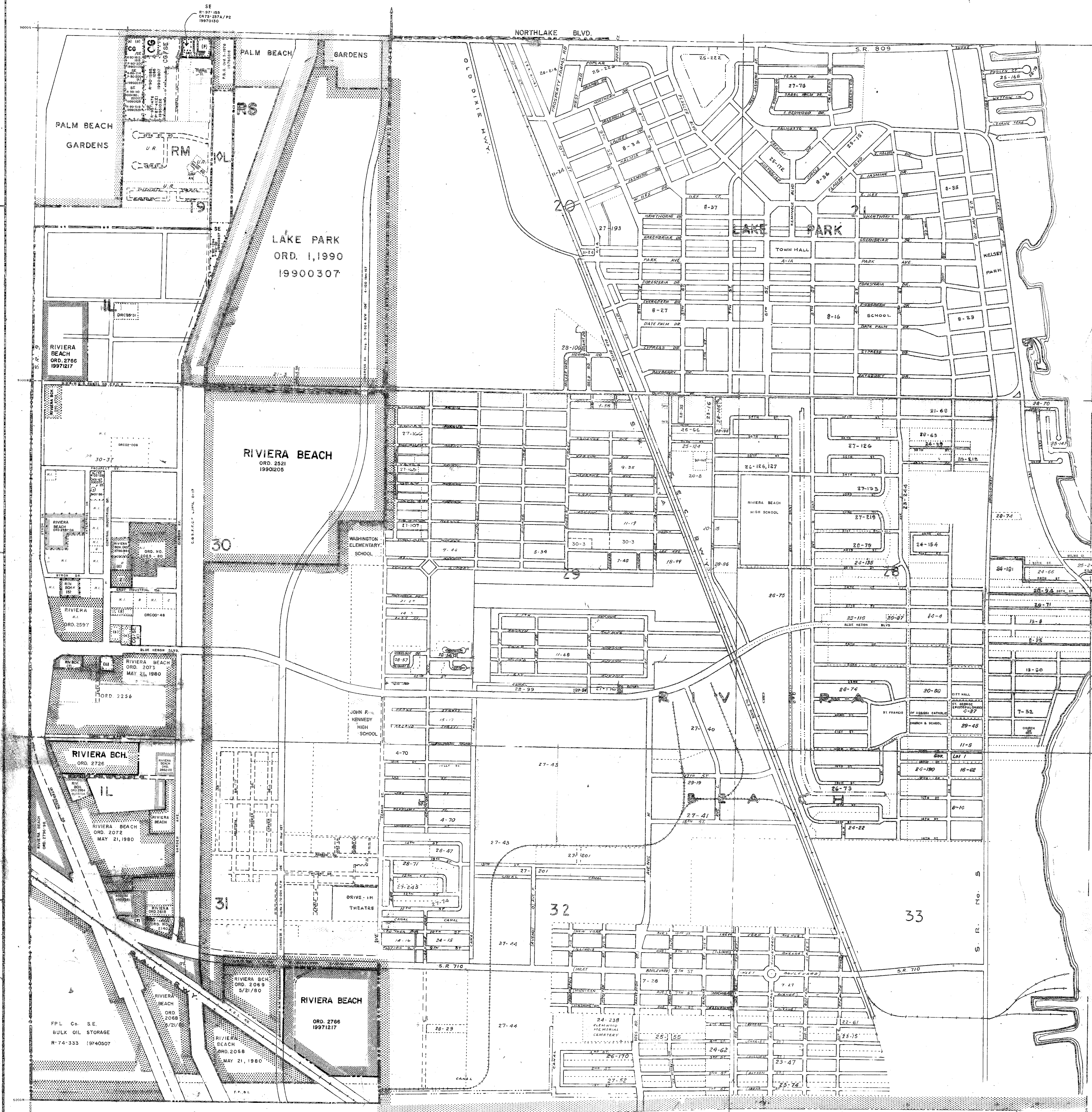


WORTH

LAKE

PORT OF PALM BEACH



RESOLUTIONS		ANNEXATIONS	
CP-81-194, 06/82	(F) IL 9-74-82	ORD 1990 RIVIERA BEACH	
PL-1-132, 1/8/83	1/8/83	ORD 2000 RIVIERA BEACH	
PL-8-175, 1/8/83	(S) 8-175, 1/8/83	ORD 2068 RIVIERA BEACH	
PL-8-204, 1/8/83	(S) 8-204, 1/8/83	ORD 2069 RIVIERA BEACH	
		ORD 2072 RIVIERA BEACH	
		ORD 2075 RIVIERA BEACH	
		ORD 2076 RIVIERA BEACH	
		ORD 2077 RIVIERA BEACH	
		ORD 2078 RIVIERA BEACH	
		ORD 2079 RIVIERA BEACH	
		ORD 2080 RIVIERA BEACH	
		ORD 2081 RIVIERA BEACH	
		ORD 2082 RIVIERA BEACH	
		ORD 2083 RIVIERA BEACH	
		ORD 2084 RIVIERA BEACH	
		ORD 2085 RIVIERA BEACH	
		ORD 2086 RIVIERA BEACH	
		ORD 2087 RIVIERA BEACH	
		ORD 2088 RIVIERA BEACH	
		ORD 2089 RIVIERA BEACH	
		ORD 2090 RIVIERA BEACH	
		ORD 2091 RIVIERA BEACH	
		ORD 2092 RIVIERA BEACH	
		ORD 2093 RIVIERA BEACH	
		ORD 2094 RIVIERA BEACH	
		ORD 2095 RIVIERA BEACH	
		ORD 2096 RIVIERA BEACH	
		ORD 2097 RIVIERA BEACH	
		ORD 2098 RIVIERA BEACH	
		ORD 2099 RIVIERA BEACH	
		ORD 2100 RIVIERA BEACH	

--- DISTRICT BOUNDARIES
 --- CORPORATE BOUNDARIES

The zoning category for the property indicated on this sheet may not be consistent with the property's Future Land Use designation under the Palm Beach County Comprehensive Plan. Please contact the Palm Beach County Planning Division at 100 Australian Avenue, West Palm Beach, FL 33406, (561) 233-5300, to confirm the property's Future Land Use designation and other relevant Comprehensive Plan requirements.

PALM BEACH COUNTY, FLORIDA
OFFICIAL ZONING DISTRICT MAP

Scale 1" = 600' approx. Date _____

Quadrant 42 43C Sheet No. 14