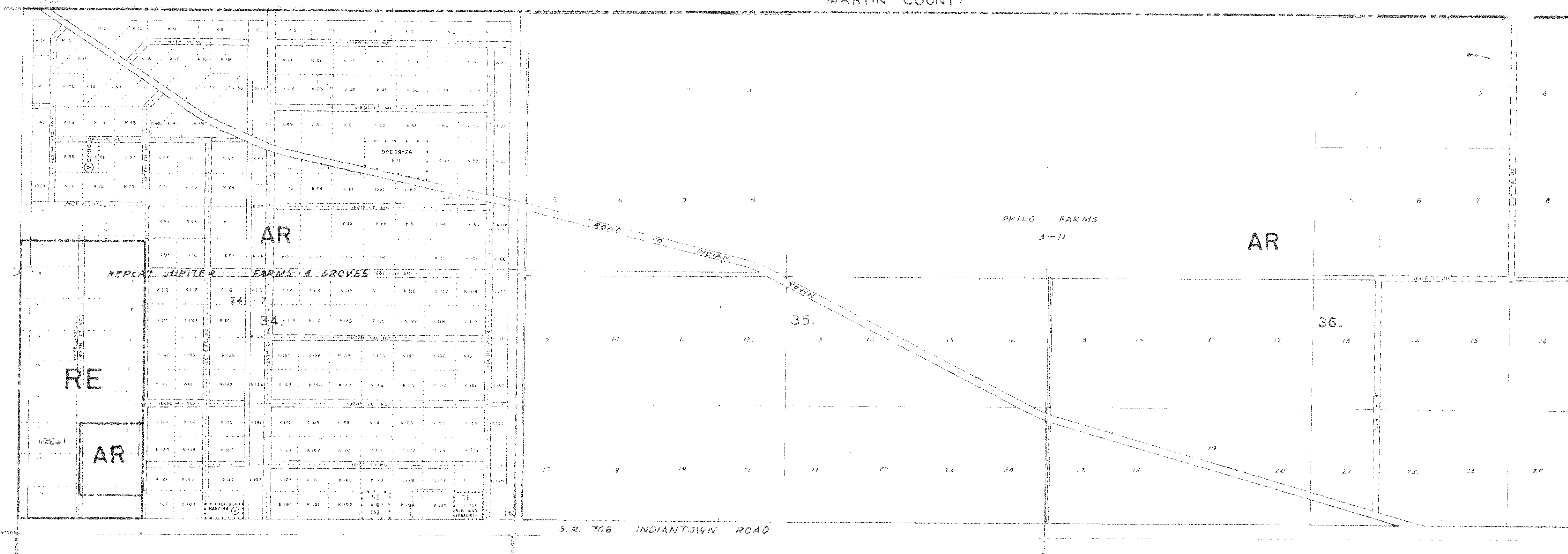


MARTIN COUNTY



RESOLUTIONS	
1973-01-01	
1973-01-01	
1973-01-01	
1973-01-01	
1973-01-01	
1973-01-01	
1973-01-01	
1973-01-01	
1973-01-01	
1973-01-01	

DISTRICT BOUNDARIES - - - - -  
 CORPORATE BOUNDARIES - - - - -

The zoning category for the property indicated on this sheet may not be consistent with the property's Future Land Use designation under the Palm Beach County Comprehensive Plan. Please contact the Palm Beach County Planning Division at 100 Australian Avenue, West Palm Beach, FL 33406, (561) 235-5300, to confirm the property's Future Land Use designation and other relevant Comprehensive Plan requirements.

**PALM BEACH COUNTY, FLORIDA**  
**OFFICIAL ZONING DISTRICT MAP**

Scale 1" = 500' approx. Date 4-1-73  
 Quadrant 40-41 D Sheet No. 55