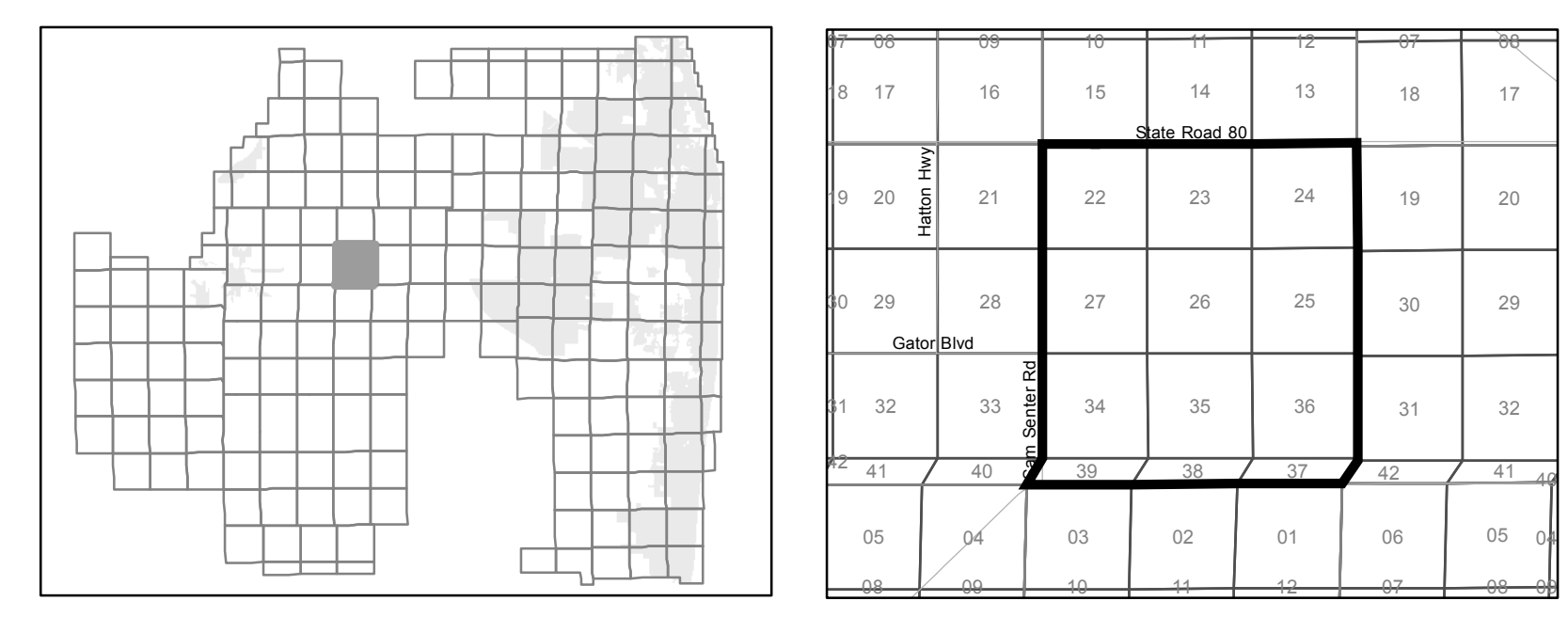
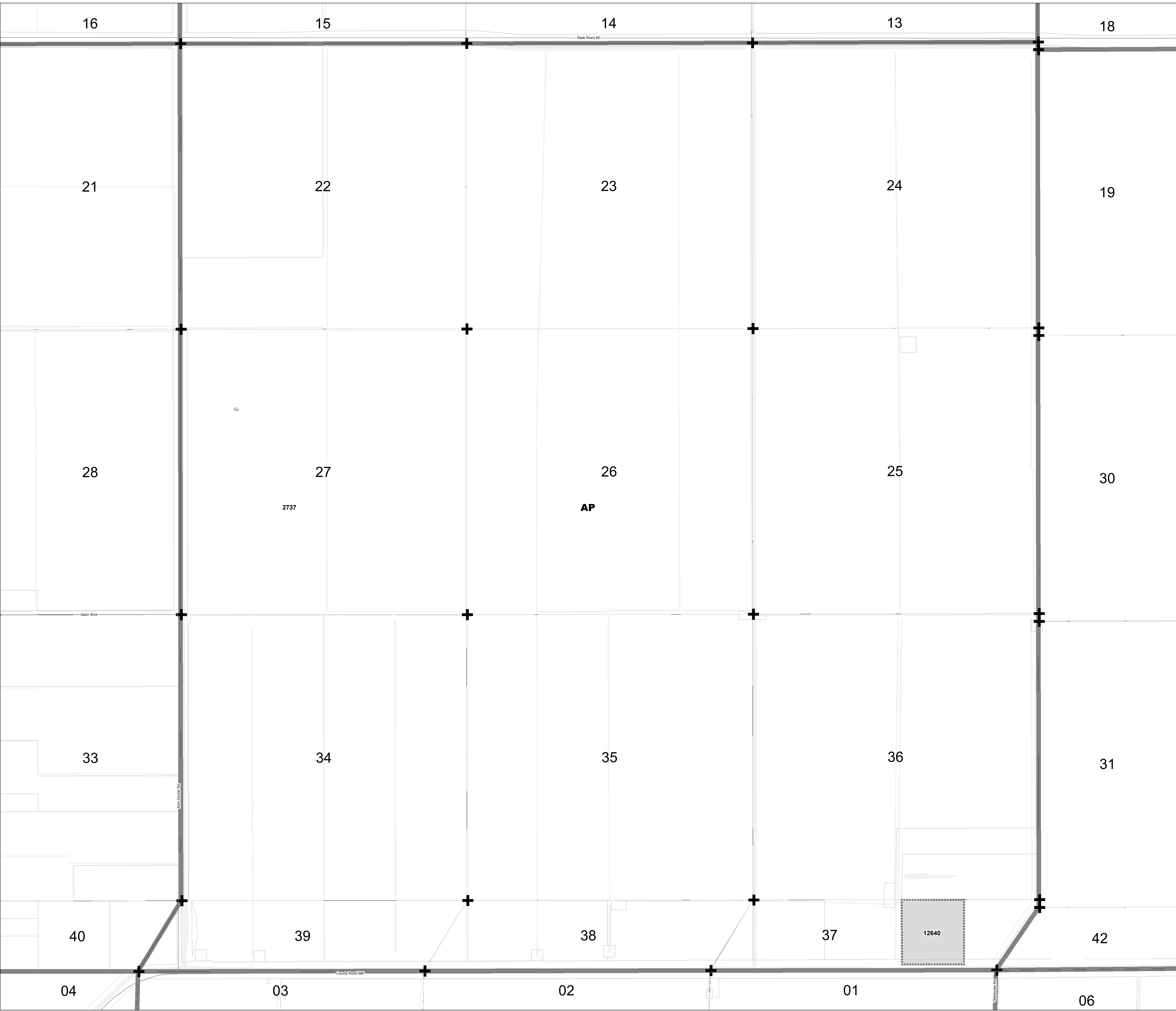


APN	APPROVAL	SECTION	DATE	APPROVED	REVISION	DATE	APPROVED	REVISION	DATE	APPROVED	REVISION
12345	CPDD	1	05/08/17	PLANNING	1	05/08/17	PLANNING	1	05/08/17	PLANNING	1
12640	CPDD	1	05/08/17	PLANNING	1	05/08/17	PLANNING	1	05/08/17	PLANNING	1



ZONING QUAD 152

Zoning District Map of Palm Beach County

May 08, 2017

<ul style="list-style-type: none"> 12345 Additional Approvals Zoning Quad Boundary Zoning District Boundary Corresponding PDD (CPDD) - Pursuant to Article 3.A.2.D of the ULDC (amended under Ordinance 2012-003) The Zoning Director has the authority to update the Official Zoning Map administratively to delineate a Planned Development District that corresponds to those prior approvals that are specified in Art.3.A.3.E.2, Planned Development Districts. 	<ul style="list-style-type: none"> Overlays Parcels Municipality 	<ul style="list-style-type: none"> Water Section Lines <div style="text-align: center;"> <p>1 inch = 600 feet 0 600 1,200 Feet</p> </div> <div style="text-align: center;"> <p>PALM BEACH COUNTY FLORIDA Planning, Zoning and Building Department</p> </div>
--	--	---