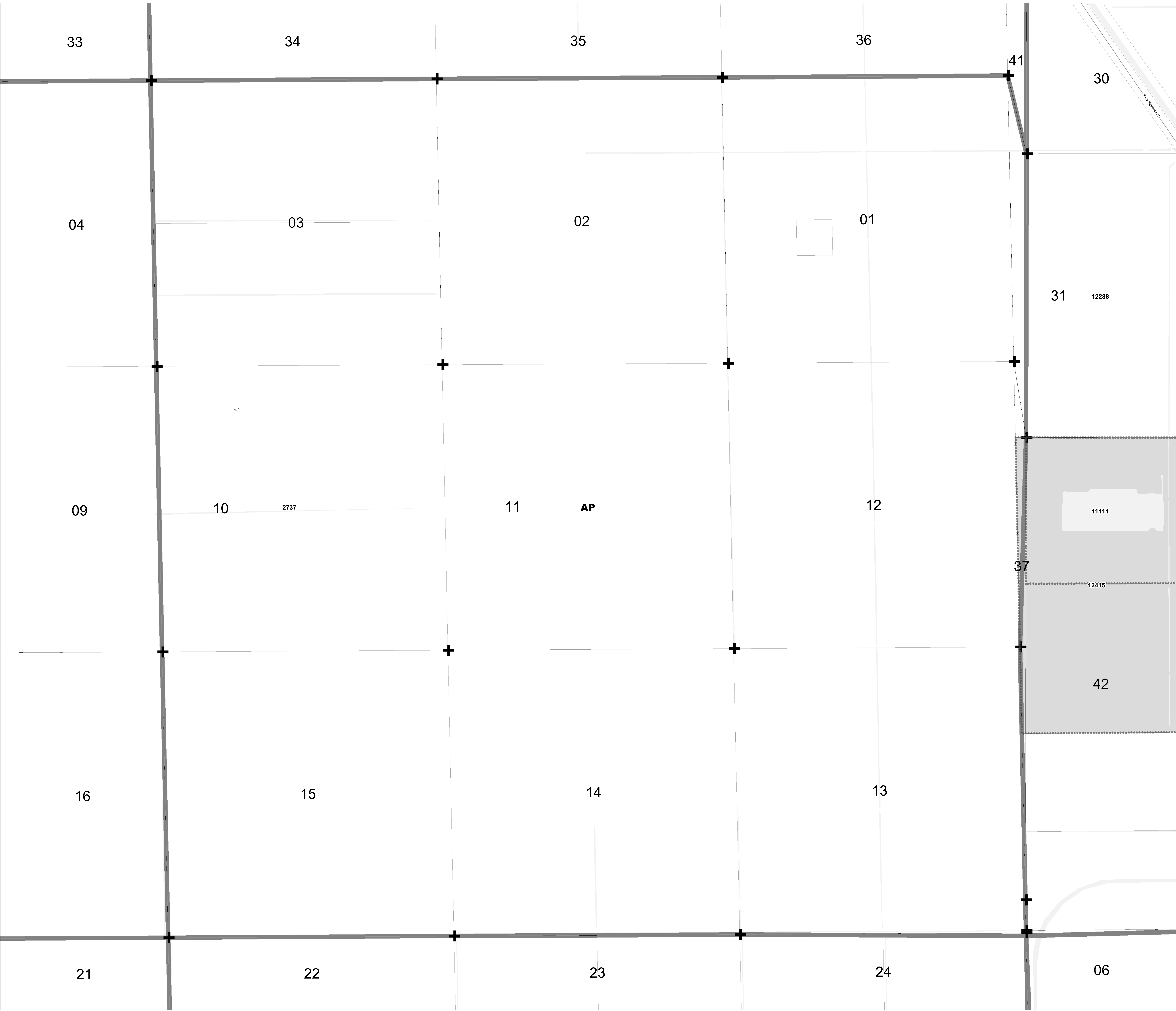


DATE	BY	DESCRIPTION
01/05/2017	PLB	Initial Zoning District Map



## ZONING QUAD 224

Zoning District Map of Palm Beach County  
January 05, 2017

<ul style="list-style-type: none"> <li> 12345 Additional Approvals</li> <li> Zoning Quad Boundary</li> <li> Zoning District Boundary</li> <li> Corresponding PDD (CPDD) - Pursuant to Article 3.A.2.D of the ULDC (amended under Ordinance 2012-003) The Zoning Director has the authority to update the Official Zoning Map administratively to delineate a Planned Development District that corresponds to those prior approvals that are specified in Art.3.A.3.E.2, Planned Development Districts.</li> </ul>	<ul style="list-style-type: none"> <li> Overlays</li> <li> Parcels</li> <li> Municipality</li> </ul>	<ul style="list-style-type: none"> <li> Water</li> <li> Section Lines</li> </ul>
--	--	--

**PALM BEACH COUNTY**  
 Planning, Zoning and Building Department