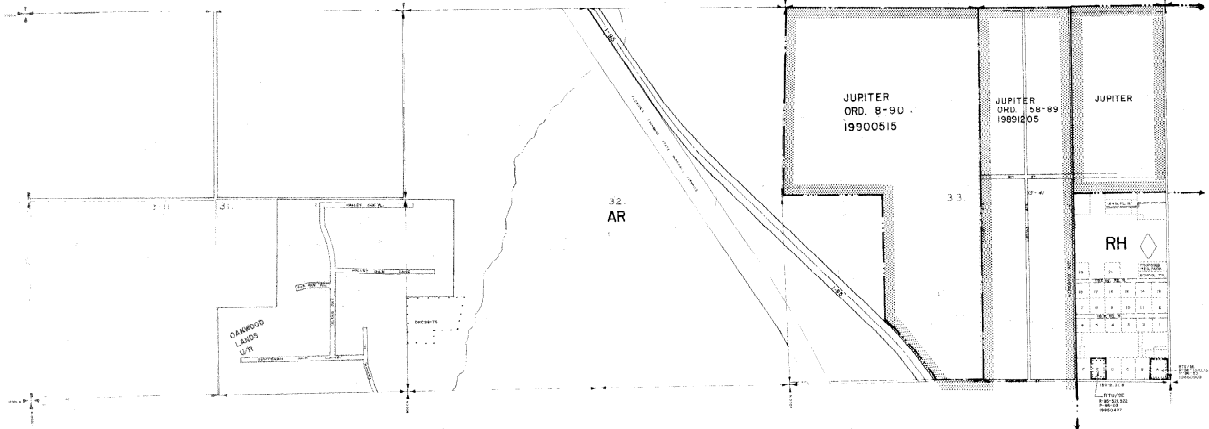


MARTIN COUNTY



RESOLUTIONS	

The zoning category for the property indicated on this sheet may not be consistent with the property's future land use designation shown on the state-owned Aerial Photograph. Please contact the Palm Beach County Planning Division at 500 Australian Avenue, West Palm Beach, FL 33409, (407) 251-1400 to confirm the property's future land use designation and other relevant information.

**PALM BEACH COUNTY, FLORIDA**  
**OFFICIAL ZONING DISTRICT MAP**

Scale: 1" = 400' approx. Date: March 1981  
 Ordinance: 40 42C Sheet No. 40