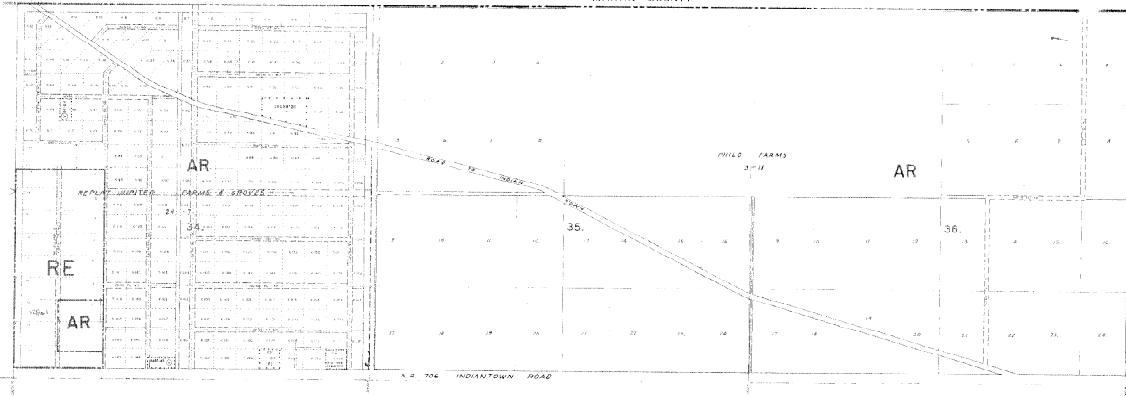


MARTIN COUNTY



RESOLUTIONS	

DISTRICT BOUNDARIES ————
 CORPORATE BOUNDARIES ————

The zoning districts for the property indicated on this sheet may not be consistent with the subject's Public Land Use Designation under the Palm Beach County Comprehensive Plan. Please contact the Palm Beach County Planning Division at 1000 Government Center, Palm Beach, FL 33402 (561) 931-6100, to confirm the property's zoning and the designations and/or relevant Comprehensive Plan (zoning) districts.

PALM BEACH COUNTY, FLORIDA
OFFICIAL ZONING DISTRICT MAP

Scale 1" = 800' meters Inch 1" = 7.5'

Quadrant 40-51 D Sheet No. 55