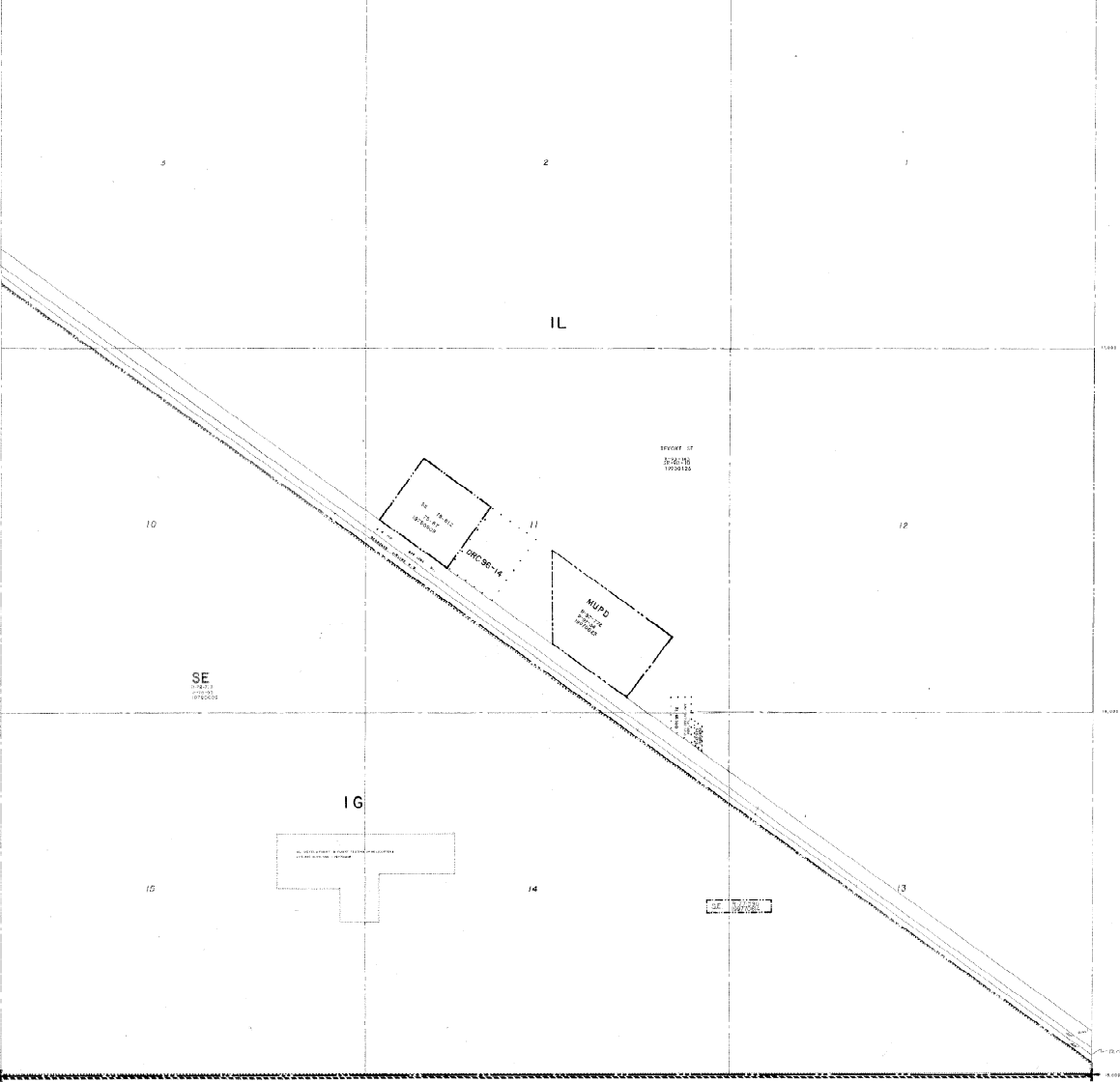


S.R. 706 INDIANTOWN ROAD



RESOLUTIONS		

RT-0  
 DISTRICT BOUNDARIES  
 CORPORATE BOUNDARIES

The zoning districts for the proposed project on the map may not be consistent with the county's future land use designation under the Palm Beach County Comprehensive Plan. Please contact the Palm Beach County Planning Division at 600 East State Street, West Palm Beach, FL 33401, for information to compare the project's future land use designation and other relevant considerations from the Comprehensive Plan.

**PALM BEACH COUNTY, FLORIDA**  
**OFFICIAL ZONING DISTRICT MAP**

Scale: 1" = 400' approx. Date: 4-1-73  
 Quadrant: 41-40 A Sheet No. 96